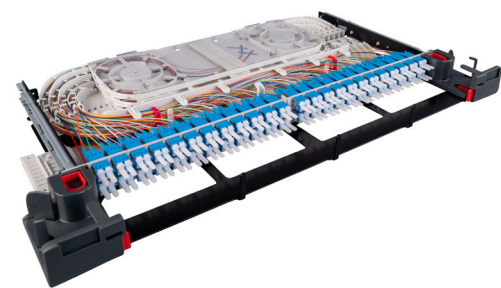


PRIME-FTU-1e

C-D-PC-C-DIN-VDE



030.6165

GENERAL DESCRIPTION

3 /4U PRIME FTU is the splice patch unit. The basic fiberinlay is suitable for 24/48 HS shrinkage contactors. Depending on the number of fibers, up to three additional MCM splice trays are equipped for 24/48 HS each.
The fiber feed takes place via the left side. It can be connected up to 8x5mm transport tubes without tools. Suitable for PRIME-3U rack ETSI and 19 „Rack with back mounting.

PRODUCT-NO	PRODUCT DESCRIPTION
R858597	PRIME-FTU-left-HS-48xLC-D-PC-C-DIN-VDE

SCOPE OF SUPPLY

3/4U FTU-Unit fully assembled
4 pcs. Cable ties, small
4 pcs. Plastic clip, small
1 pcs. Laser sign, small
Installation manual

TECHNICAL DATA

DESCRIPTION	VALUE / VALUE RANGE
Fiber type	singlemode (SM)
Fiber diameter	E9 / 125 µm
Fiber count	96
Number of connectors A	48
Connector type FO A	LC-Duplex
Protection class IP A	IP 20
Polishing plug A	PC
Attenuation grade IL A	C
Return loss grade RL A	2

PRIME-FTU-Ie

C-D-PC-C-DIN-VDE

DESCRIPTION	VALUE / VALUE RANGE
Connector color A	blue
Sleeve material	ceramic
Standards / norms	Adapter and connector in acc. with IEC 61754-20 Pigtails in acc. with color code DIN VDE 0888
Mounting	PRIME-3U-Sub-rack, ETSI/19"FM
Assembly	fully populated
Mounting frame type	slid-in unit

MECHANICAL DATA

DESCRIPTION	VALUE / VALUE RANGE
Color	metal sheet (Black-RAL 9005), front and fiber management (light gray-RAL 7035)
Material	metal sheet and plastic
Weight (Kg)	2.4

CLIMATICAL DATA

DESCRIPTION	VALUE / VALUE RANGE
Temperature range - in service	-25 °C to +70 °C / -13 °F to +158 °F
Temperature range - in storage & transport	-40 °C to +85 °C / -40 °F to +185 °F

FIRE PROPERTIES

DESCRIPTION	VALUE / VALUE RANGE
Halogen free, acid gases	Pass
RoHS	Pass

TECHNICAL DRAWING

