

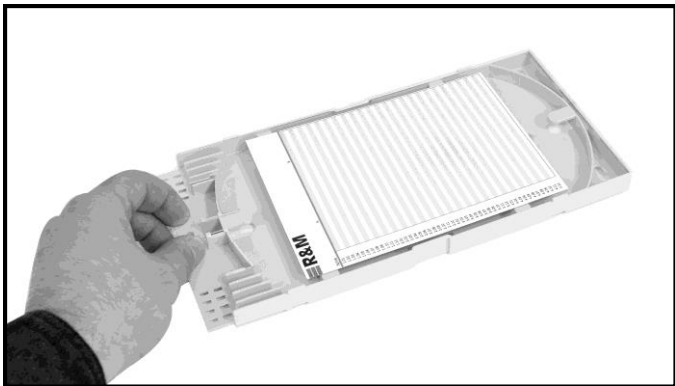
R&M ST08 installation guide

R273455 (Single & Ribbon); R273454 (Single only); R273456 (Ribbon only)



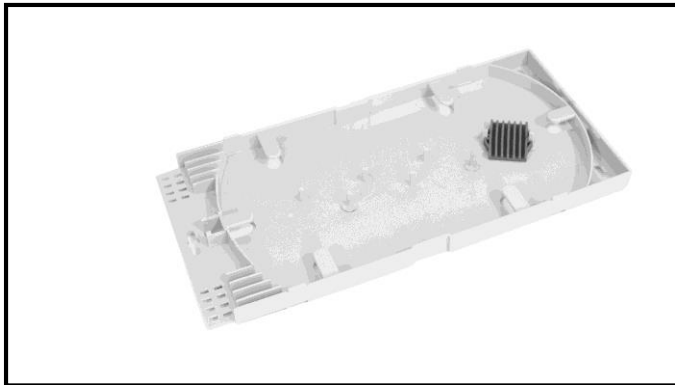
General

The splice tray stores up to 48 single fusion splices or 32 two fiber ribbon splices.



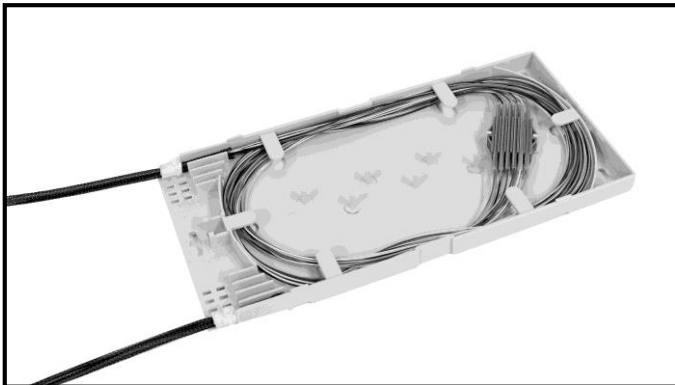
Remove cover

Twist the front hold-down tab and raise the cover upward. Pull the cover forward out of the slots and remove.



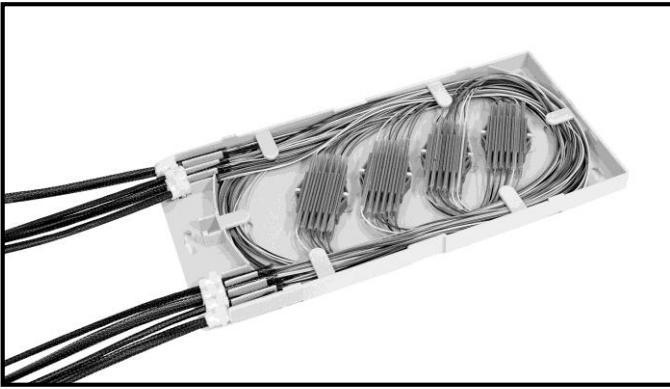
Prepare fibers

Strip back 45" of cable to go into the tray. Attach the incoming and outgoing fiber to the tray, using the foam double-sided adhesive foam pads and zip ties.



Dress into the tray

Dress the fibers into the tray and mark them with a permanent marker at the appropriate slice sleeve holder.

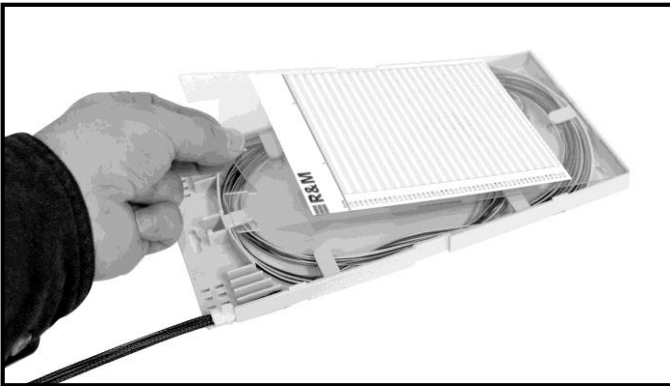


Splice fibers

Cut fibers at marked lengths and remove them from the tray.

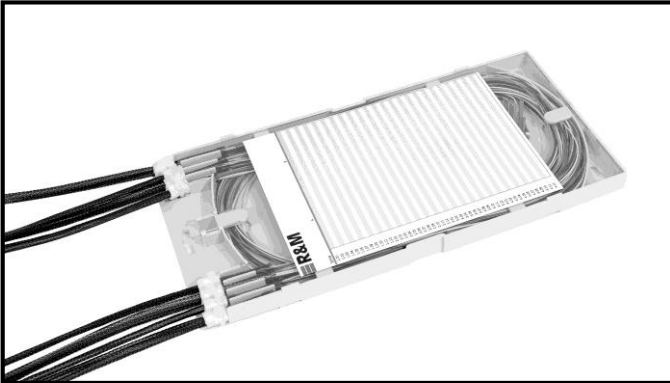
Splice them together and insert into the splice sleeve holder.

Wrap the fibers into a loop and insert into the tray with the holder



Replace cover

Secure the cover by putting the rear tabs into the two slots in the rear of the tray and twist, locking the tab into it's holder.



Documentation

Apply the chart label to the lid.

Important Notice

This document was prepared with greatest possible care and reflects the current state of technology at the time of printing. Subject to corrections and technical changes.

R&M USA Inc.

840 Yosemite Way
Milpitas, CA 95035
USA

Phone +1 408 945-6626
E-Mail usa@rdm.com

