



BROOKLYN INTERNATIONAL COLLEGE

RTO Code: 45829
CRICOS Code: 04001M

COURSE PRICELIST

Courses	Course Code	CRICOS Course Code	Duration	Study Weeks	Break	Onshore/Offshore	Material Fee
Diploma of Leadership & Management	BSB50420	109189K	52 weeks	40 weeks	12 weeks	\$6000/\$8000	\$100
Advance Diploma of Leadership & Management	BSB60420	109190F	78 weeks	60 weeks	18 weeks	\$9000/\$12000	\$100
Certificate III in Early Childhood Education & Care	CHC30121	113002C	52 weeks	40 weeks	12 weeks	\$8000/\$9000	\$1000
Diploma of Early Childhood Education & Care	CHC50121	113043E	52 weeks	40 weeks	12 weeks	\$8000/\$9000	\$1000
Diploma of Community Service	CHC52021	113070B	104 weeks	80weeks	24 weeks	\$16000/\$18000	\$2000

Package Courses	Duration	Onshore/Offshore
Certificate III & Diploma in Early Childhood Education and care	104 weeks	\$16000/\$18000
Diploma & Advance Diploma of Leadership & Management	118 weeks	\$13500/\$18000

DOCUMENTS CHECKLIST

- ✓ Student Application Form
- ✓ Genuine Temporary Assessment Form
- ✓ Certified Copy of Passport.
- ✓ Certified Copy of High School
- ✓ Certificate or equivalent secondary schooling outcome, qualification, work experience.
- ✓ Certified English Language Proficiency Report
- ✓ Visa Grand Notification Letter.

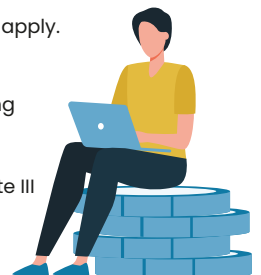
Intakes Every Year

JAN | APR | JUL | OCT

Multiple Intakes Available for Diploma and Advanced Diploma of Leadership and Management.

ENTRY REQUIREMENTS CHECKLIST

- ✓ Must be 18 years of age or older.
- ✓ Must provide proof of school studies which is equivalent to Australian Year 12 or other higher qualifications.
- ✓ English language course approved by Brooklyn Int College or an overall IELTS band score of at least 5.5 (Academic or General); or a TOEFL score of at least 520, or at least 190 in the computer based TOEFL; or a score of 45 or higher in the Pearson test of English
- ✓ English proficiency certificate from an approved ELICOS provider of intermediate level or above; or completion of substantial part of studies of at least an AQF Certificate IV qualification test.
- ✓ International Students must meet the Student Visa (SC500) requirements.
- ✓ For ADLM following additional entry requirement apply.
 - ✓ Student must have completed a Diploma or Advanced Diploma from the BSB training Package (Current or superseded equivalent versions).
 - ✓ Student must have completed a Certificate III to Study diploma of Early Childhood Education and Care



ADMISSION PROCESS

Application Form GTE
Assessment form
Relevant Documents

Offer Letter Issued

Acceptance of Offer and Payment

Confirmation of Enrolment Certificate

Apply for Student Visa SC500

Attend the College Orientation

Notes:

Please note, Brooklyn College reserves the right to vary the tuition fees and/or other charges from time to time.

* Each term consist of 10 weeks

Level 6 245- 247 Castlereagh Street, Sydney NSW 2000

02 7228 8245

info@brooklyn.edu.au

www.brooklyn.edu.au