



RTO Code: 45829
CRICOS Code: 04001M



BROOKLYN INTERNATIONAL COLLEGE

A Great Place to Think **Big Thoughts**



www.brooklyn.edu.au

Welcome to Brooklyn College

Brooklyn International College's (BIC) principal aim is to provide quality accredited RTO and CRICOS in BSB Training Packages under the AQF levels 3, 5 and 6 with the provision of BSB50420 Diploma of Leadership and Management, BSB60420 Advanced Diploma of Leadership and Management qualification, CHC30121 Certificate III in Early Childhood Education and Care, CHC50121 Diploma of Early Childhood Education and Care & CHC52021-Diploma of Community Services.

BIC's main business purpose is to establish a reputable vocational education organisation known for high quality training to provide quality academic and professional services and the best to our students. In response to the growing demand for quality, affordable, and flexible vocational courses in the market in general, and imparting with the current state of art and vibrant skill and knowledge in the leadership and management & Community services sector. We Brooklyn International College, move ahead as a Registered Training Organisation (RTO) to deliver nationally recognised qualifications in Australia.



VISION

Our students are the centres of our business. We apply a student focused approach to tailor our services to meet their specific needs. We employ a positive attitude with a 'can do' approach and aim to provide quality professional services and be the supplier of choice for their business.



MISSION

Provide high quality, professional and accessible training services tailored to engage, develop and empower students to meet their learning and career goals. The learning will be workplace focused and relevant to individual needs.

Create simple; user friendly and accessible training resources that are tailored to the needs and requirements of students, relevant to the modern workplace and encourages a positive learning experience.

BIC has an exceptional academic and non-academic support to students from early enrolment to final stage. We have a structured system to help students through trainers, student support officer, admin staff, IT team and counselling professionals.



GOAL

Consolidate and develop the scope of the training offerings to include a range of VET programs, short courses, and industry consulting services to attract a range of students and clients, seeking training solutions to meet their needs and requirements.

Ensure all courses and services offered meet quality and professional standards at AQF level and our high level of professionalism.

Liaise with a Higher Education provider for a pathway to our students for further studies.

Provide high quality, professional and accessible training services tailored to engage, develop, and empower students to meet their learning and career goals.

Why to Choose Us ?

1

Highly qualified and experienced CEO with Trainers

CEO and Trainers are highly qualified and experienced on VET industry, dedicated professionals committed to provide high quality learning experiences in an affordable cost.

2

Location

Level 6 , 245 Castlereagh Street, Sydney 2000 NSW
Australia

3

Support Systems

BIC has an exceptional academic and non-academic support to students from early enrolment to final stage. We have a structured system to help students through trainers, student support officer, admin staff, IT team and counselling professionals.

4

Modern Facilities

BIC's classrooms are Well- equipped with modern facilities and a fully equipped computer lab.

Explore our Courses

BSB50420 Diploma of Leadership and Management

This qualification reflects the role of individuals who apply knowledge, practical skills and experience in leadership and management across a range of enterprise and industry contexts. Individuals at this level display initiative and judgement in planning, organising, implementing and monitoring their workload and the workload of others. They use communication skills to support individuals and teams to meet organisational or enterprise requirements. They may plan, design, apply and evaluate solutions to unpredictable problems, and identify, analyse and synthesise information from a variety of sources.



BSB60420 Advanced Diploma of Leadership and Management

This qualification reflects the role of individuals who apply specialised knowledge and skills, together with experience in leadership and management, across a range of enterprise and industry contexts. Individuals at this level use initiative and judgement to plan and implement a range of leadership and management functions, with accountability for personal and team outcomes within broad parameters. They use cognitive and communication skills to identify, analyse and synthesise information from a variety of sources and transfer their knowledge to others, and creative or conceptual skills to express ideas and perspectives or respond to complex problems.

CHC30121 Certificate III in Early Childhood Education and Care

This qualification reflects the role of educators in early childhood education and care who work in regulated children's education and care services in Australia. Educators at this level are responsible for designing and implementing curriculum that meets the requirements of an approved learning framework and for maintaining compliance in other areas of service operations. They use specialised knowledge and analyse and apply theoretical concepts to diverse work situations. They may have responsibility for supervision of volunteers or other educators.



Early childhood educators work in long day care centres, family day care, pre-schools, or kindergartens.

To achieve this qualification, the individual must have completed a total of least 160 hours of work in a regulated children's education and care service in Australia as detailed in the Assessment Requirements of units of competency. The total number of hours may be applied collectively across all units of competency that include the requirement for workplace hours.

No occupational licensing, certification or specific legislative requirements apply to this qualification at the time of publication.

Under the Education and Care Services National Law (2011) the Australian Children's Education and Care Quality Authority (ACECQA) publishes lists of approved early childhood education and care qualifications and information regarding regulatory requirements here: www.acecqa.gov.au



CHC50121 Diploma of Early Childhood Education and Care

This qualification reflects the role of educators in early childhood education and care who work in regulated children's education and care services in Australia. Educators at this level are responsible for designing and implementing curriculum that meets the requirements of an approved learning framework and for maintaining compliance in other areas of service operations. They use specialised knowledge and analyse and apply theoretical concepts to diverse work situations. They may have responsibility for supervision of volunteers or other educators.

Early childhood educators work in long day care centres, family day care, pre-schools or kindergartens.

To achieve this qualification, the individual must have completed a total of least 280 hours of work in a regulated children's education and care service in Australia as detailed in the Assessment Requirements of units of competency. The total number of hours may be applied collectively across all units of competency that include the requirement for workplace hours.

No occupational licensing, certification or specific legislative requirements apply to this qualification at the time of publication.

Under the Education and Care Services National Law (2011) the Australian Children's Education and Care Quality Authority (ACECQA) publishes lists of approved early childhood education and care qualifications and information regarding regulatory requirements here: www.acecqa.gov.au

CHC52021 Diploma of Community Services

This qualification reflects the role of community services workers involved in the delivery, management and coordination of person-centred services to individuals, groups, and communities.

At this level, workers have specialised skills in community services and work autonomously within their scope of practice under broad directions from senior management.

Workers support people to make change in their lives to improve personal and social wellbeing and may also have responsibility for the supervision of other workers and volunteers. They may also undertake case management and program coordination.

To achieve this qualification, the candidate must have completed at least 200 hours of work as detailed in the Assessment Requirements of units of competency.

The skills in this qualification must be applied in accordance with Commonwealth and State or Territory legislation, Australian standards and industry codes of practice.

No occupational licensing, certification or specific legislative requirements apply to this qualification at the time of publication.



DOCUMENTS CHECKLIST

- ✓ Student Application Form
- ✓ Genuine Temporary Assessment Form
- ✓ Certified Copy of Passport.
- ✓ Certified Copy of High School
- ✓ Certificate or equivalent secondary schooling outcome, qualification, work experience.
- ✓ Certified English Language Proficiency Report
- ✓ Visa Grand Notification Letter.

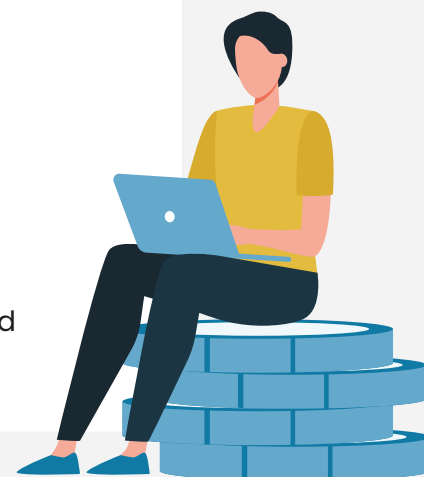
Intakes Every Year

JAN | APR | JUL | OCT

Multiple Intakes Available for Diploma and Advanced Diploma of Leadership and Management.

ENTRY REQUIREMENTS CHECKLIST

- ✓ Must be 18 years of age or older.
- ✓ Must provide proof of school studies which is equivalent to Australian Year 12 or other higher qualifications.
- ✓ Must provide valid academic IELTS* of at least 5.5 overall score or equivalent unless exempted or need to submit English language course approved by Brooklyn Int College or an overall IELTS* score of 6.0 with no individual band scoring lower than 5.5 (test results must be no more than 2 years old) or a TOEFL score of at least 520, or at least 190 in the computer based TOEFL; or a score of 45 or higher in the Pearson test of English.
- ✓ International Students must meet the Student Visa (SC500) requirements.
- ✓ For ADLM following additional entry requirement apply.
 - ✓ Student must have completed a Diploma or Advanced Diploma from the BSB training Package (Current or superseded equivalent versions).
 - ✓ Student must have completed a Certificate III to Study diploma of Early Childhood Education and Care



ADMISSION PROCESS

Application Form GTE Assessment form Relevant Documents

Offer Letter Issued

Acceptance of Offer and Payment

Confirmation of Enrolment Certificate

Apply for Student Visa SC500

Attend the College Orientation



Level 6 245- 247 Castlereagh Street, Sydney NSW 2000



02 7228 8245



info@brooklyn.edu.au