

Concerto

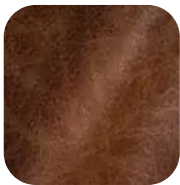


Concerto is a waxed pull-up leather with a subtle vintage and distressed effect. The elegant crackle and aged surface add character while the colors in this collection bring richness and warmth. Concerto is sealed for added durability. Make an impression on your clients or guests with this sophisticated choice.

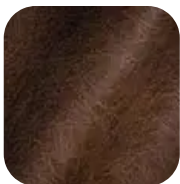
Finish Type: Aniline - Wax Pull-Up | **Country Finished:** Italy | **Size:** 48 sq ft +/- | **Thickness:** 1.2-1.4MM | **Usage:** Home Furnishings, Luxury Interiors



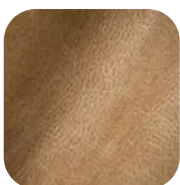
Chocolate [Get Quote!](#)



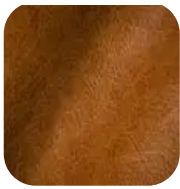
Dark Brown [Get Quote!](#)



Mushroom [Get Quote!](#)



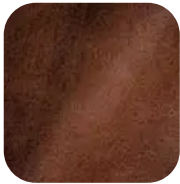
Oatmeal [Get Quote!](#)



Saddle Get Quote!



Smoke Get Quote!



Whiskey Get Quote!



SPECIFICATIONS

performance characteristics

EN ISO 4045

DETERMINE Ph & Ph (DIFFERENCE
FIGURE)

Min 3,2

COLOR FASTNESS OF LEATHER
TO LIGHT: XENON LAMP

Grey Scale = 3 on Reference Blue Wool
#4

ISO 11641

COLOR FASTNESS OF LEATHER
TO PERSPIRATION

20 Cycles \geq 3

EN ISO 11640

COLOR FASTNESS OF LEATHER
TO RUBBING

50 Cycles Dry \geq 3

20 Cycles Wet \geq 3

EN ISO 11644

FINISH ADHESION

2 N/cm

EN ISO 3376

MEASURE TENSILE STRENGTH
AND % ELONGATION

Tensile Strength \geq 8 Mpa

% Elongation \leq 80%

EN ISO 3377-1

TEAR STRENGTH (SINGLE EDGE
TEAR)

> 20 N Minimum

flame resistance

CA TB 117 - 2013

Complies

**NFPA - 260 CIGARETTE
IGNITION**

Class 1

FMVSS 302

TBA
