

Luxor



Luxor features a wide-ranging color palette and is one of Leathera's largest collections. American dairy cows are meticulously selected for this article to give it a natural, even, pebbled grain, and to maximize its natural hand. Luxor has excellent wear ability and added durability, due to the high performance characteristics added during the finishing process. We highly recommend this leather for use in the contract, hospitality, and residential markets. Once upholstered, Luxor will give any piece of furniture a luxurious look at a very affordable price.

Finish Type: Protected - Aniline | **Country Finished:** Italy | **Size:** 58 sq ft +/-
| **Thickness:** 1.2-1.4MM | **Usage:** Home Furnishings, Contract and Hospitality, Luxury Interiors



Aubergine [Get Quote!](#)

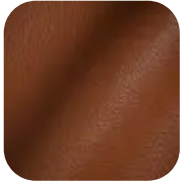


Bamboo [Get Quote!](#)



Bayou [Get Quote!](#)

Black [Get Quote!](#)



Brandy Get Quote!



Canyon Get Quote!



Chestnut Get Quote!



Chocolate Get Quote!



Coal Get Quote!

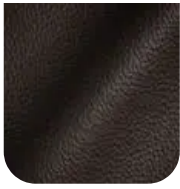


Cream Get Quote!



Dark Brown Get Quote!

Espresso Get Quote!



Graphite Get Quote!



Ivory Get Quote!



Merlot Get Quote!



Navy Get Quote!



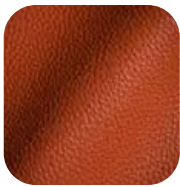
Ocean Get Quote!



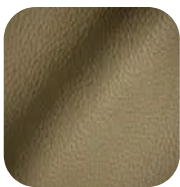
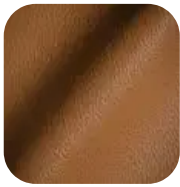
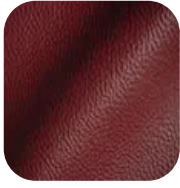
Olive Get Quote!



Paprika Get Quote!



Pewter Get Quote!



Praline Get Quote!

Red Get Quote!

Riverstone Get Quote!

Saddle Get Quote!

Silver Get Quote!

Spruce Get Quote!

Taupe Get Quote!

Turquoise Get Quote!



White **Get Quote!**



SPECIFICATIONS

performance characteristics

EN ISO 4045

DETERMINE Ph & Ph (DIFFERENCE
FIGURE)

Min 3,2

ISO105/B02

COLOR FASTNESS OF LEATHER
TO LIGHT: XENON LAMP

Grey Scale ≥ 3 on specimen
Grey Scale = 3 on Reference Blue Wool
#5

EN ISO 15700

COLOR FASTNESS TO WATER

Grey Scale ≥ 3 (No permanent
swelling)

SPOTTING

ISO 11641

COLOR FASTNESS OF LEATHER
TO PERSPIRATION

80 Cycles \geq 3.5

EN ISO 11640

COLOR FASTNESS OF LEATHER
TO RUBBING

500 Cycles Dry \geq 4
250 Cycles Wet \geq 3.5

EN ISO 11644

FINISH ADHESION

3 N/cm

EN ISO 3376

MEASURE TENSILE STRENGTH
AND % ELONGATION

Tensile Strength \geq 8 Mpa
% Elongation \leq 80%

EN ISO 5402

FLEXING ENDURANCE
(FLEXOMETER METHOD)

50,000 Cycles (no finish damage
cracks)

EN ISO 17233

COLD CRACK RESISTANCE OF
FINISH

-15°C (no finish cracks)

EN ISO 3377-1

TEAR STRENGTH (SINGLE EDGE
TEAR)

>20 N Minimum

flame resistance

CA TB 117 - 2013

Complies

**NFPA - 260 CIGARETTE
IGNITION**

Class 1

FMVSS 302

Complies