

Palette



Palette is the "go to leather". It's aniline dyed and has a protective finish to give Palette a smooth, consistent graining and color. Its suppleness is perfect for residential use yet it's unique and durable finish will pass the strictest commercial code. This is the largest collection for Leathera.

Finish Type: Protected - Semi-Aniline | **Country Finished:** Italy | **Size:** 53 sq ft +/- | **Thickness:** 0.9-1.1 mm | **Usage:** Home Furnishings, Contract and Hospitality



Avocado [Get Quote!](#)



Baby Camel [Get Quote!](#)



Bamboo [Get Quote!](#)



Bayou [Get Quote!](#)



Black [Get Quote!](#)



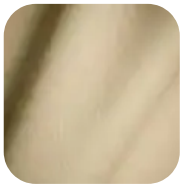
Charcoal [Get Quote!](#)



Chocolate [Get Quote!](#)



Coal [Get Quote!](#)



Cream [Get Quote!](#)



Dove [Get Quote!](#)

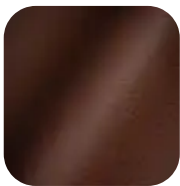


Espresso [Get Quote!](#)



Fire Engine Red [Get Quote!](#)

Fog [Get Quote!](#)



Fuchsia Get Quote!

Grey Get Quote!

Harness Brown Get Quote!

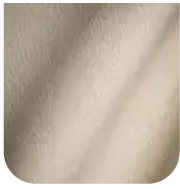
Hazelnut Get Quote!

Henna Get Quote!

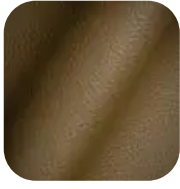
Iolite Get Quote!

Iris Get Quote!

Ivory Get Quote!



Pebble Get Quote!



Khaki Get Quote!



Mango Get Quote!



Mist Blue Get Quote!



Mocha Get Quote!



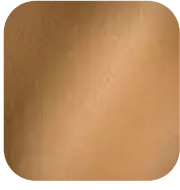
Navy Get Quote!



Ocean Get Quote!



Oxblood Get Quote!



Plum Get Quote!

Saddle Get Quote!

Sandstone Get Quote!

Smoke Grey Get Quote!

Star Get Quote!

Stone Get Quote!

Tan Get Quote!

Taupe Get Quote!



White Get Quote!



Wine Get Quote!



SPECIFICATIONS

performance characteristics

EN ISO 4045

DETERMINE Ph & Ph (DIFFERENCE
FIGURE)

Min 3,2

COLOR FASTNESS OF LEATHER
TO LIGHT: XENON LAMP

Grey Scale = 3 on Reference Blue Wool
#5

EN ISO 15700

COLOR FASTNESS TO WATER
SPOTTING

Grey Scale ≥ 3 (No permanent
swelling)

ISO 11641

COLOR FASTNESS OF LEATHER
TO PERSPIRATION

80 Cycles ≥ 3.5

EN ISO 11640

COLOR FASTNESS OF LEATHER
TO RUBBING

500 Cycles Dry ≥ 4
250 Cycles Wet ≥ 3.5

EN ISO 11644

FINISH ADHESION

3 N/cm

EN ISO 3376

MEASURE TENSILE STRENGTH
AND % ELONGATION

Tensile Strength ≥ 8 Mpa
% Elongation $\leq 80\%$

EN ISO 5402

FLEXING ENDURANCE
(FLEXOMETER METHOD)

50,000 Cycles (no finish damage
cracks)

EN ISO 17233

COLD CRACK RESISTANCE OF
FINISH

-15°C (no finish cracks)

EN ISO 3377-1

TEAR STRENGTH (SINGLE EDGE
TEAR)

>20 N Minimum

flame resistance

CA TB 117 - 2013

Complies

**NFPA - 260 CIGARETTE
IGNITION**

Class 1

FMVSS 302

Complies