

Sedona



Sedona is a semi-aniline leather stained with a natural two-toned finish. Featuring a fine pebble grain texture this leather feels soft and supple. Durability is enhanced with the application of a light transparent protective coat. Express a warm and natural decor with this premium leather.

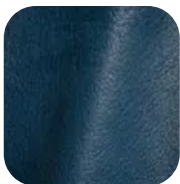
Finish Type: Protected - Semi-Aniline | **Country Finished:** Italy | **Size:** 53 sq ft +/- | **Thickness:** 0.9-1.1 mm | **Usage:** Home Furnishings, Contract and Hospitality



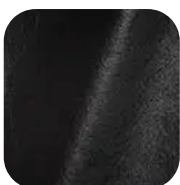
Aqua [Get Quote!](#)



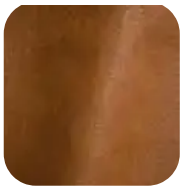
Bamboo [Get Quote!](#)



Bayou [Get Quote!](#)



Black [Get Quote!](#)



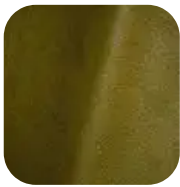
Cashew Get Quote!



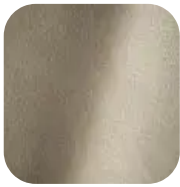
Cream Get Quote!



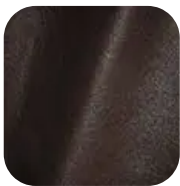
Dove Get Quote!



Garden Get Quote!



Ivory Get Quote!



Molasses Get Quote!

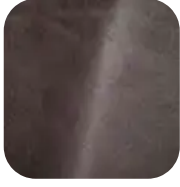


Orange Get Quote!



Pinto Get Quote!

Pomegranate Get Quote!



Titanium Get Quote!



SPECIFICATIONS

performance characteristics

EN ISO 4045

DETERMINE Ph & Ph (DIFFERENCE
FIGURE)

Min 3,2

ISO105/B02

COLOR FASTNESS OF LEATHER
TO LIGHT: XENON LAMP

Grey Scale ≥ 3 on specimen
Grey Scale = 3 on Reference Blue Wool
#5

EN ISO 15700

COLOR FASTNESS TO WATER

Grey Scale ≥ 3 (No permanent
swelling)

SPOTTING

ISO 11641

COLOR FASTNESS OF LEATHER
TO PERSPIRATION

80 Cycles \geq 3.5

EN ISO 11640

COLOR FASTNESS OF LEATHER
TO RUBBING

500 Cycles Dry \geq 4
250 Cycles Wet \geq 3.5

EN ISO 11644

FINISH ADHESION

3 N/cm

EN ISO 3376

MEASURE TENSILE STRENGTH
AND % ELONGATION

Tensile Strength \geq 8 Mpa
% Elongation \leq 80%

EN ISO 5402

FLEXING ENDURANCE
(FLEXOMETER METHOD)

50,000 Cycles (no finish damage
cracks)

EN ISO 17233

COLD CRACK RESISTANCE OF
FINISH

-15°C (no finish cracks)

EN ISO 3377-1

TEAR STRENGTH (SINGLE EDGE
TEAR)

>20 N Minimum

flame resistance

CA TB 117 - 2013

Complies

**NFPA - 260 CIGARETTE
IGNITION**

Class 1

FMVSS 302

TBA