



+44 23 8045 6358  
info@riggingprojects.com  
www.riggingprojects.com

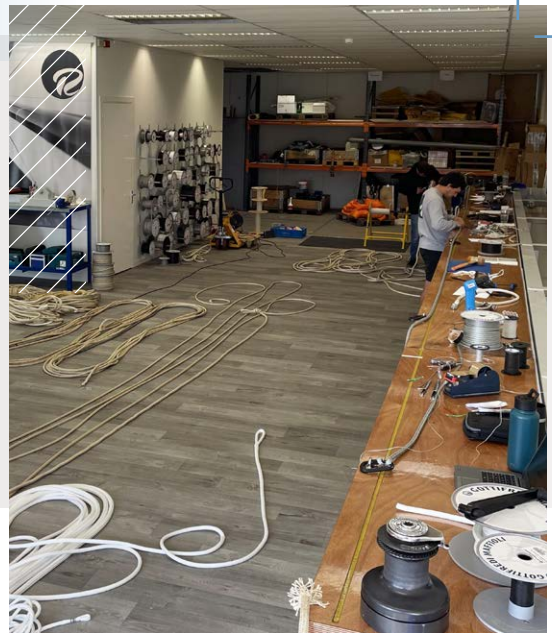
Autumn/Winter 2022

# IN THE LOOP

THE LATEST NEWS FROM RIGGING PROJECTS

## Rigging Projects BV

Having set up RPBV last year in Zaandam Holland, 2022 has seen the construction of our state-of-the-art running rigging workshop in the Huisfit yard. With the addition of a new custom-designed test bed, our workshop is equipped to produce bespoke textile solutions for the marine industry. We pride ourselves on excellent line specification, finishing detail and global aftersales support. From initial specification through to installation and beyond, our attention to detail and customer service has resulted in long-standing relationships with our clients. With rope packages for Jasi Swan 115 Skade Tripp 46m, Halekai Hoek Truly Classic 128, Anemoi Dubois 38m, Gunboat 68-06, Sojana 35m Ketch, and the new Batlic 110 all completed between the summer and Christmas this year, the workshop has been a busy place!



## Rigging Projects Machining Ltd



2022 sees the exciting addition of Rigging Projects Machining (RPM) to the RP Group. Having worked with Seadub, run by Chris Whitwam and his wife Katie, over the past six years it became apparent that the next obvious move would be to combine our skills and bring everything together under one roof. To this end, we have created RPM and welcome Chris, Katie and their established machining team, Harry Smith, Alistair Palau, Daniel Thomason, and Ian Floss. This is very exciting news for the growth of the business, and we all look forward to working together as one Rigging Projects team.

We are currently in the process of procuring a new 1 m long bed CNC Mill, which will be added to the current machine shop inventory, enabling us to manufacture our entire product range and boost production capacity.





## Product Update



### Introducing the Glide range

Designed for large performance and race yachts, the Glide Range of sheaves share the same geometry. The **X Glide** sheave has the technical advantage of ceramic bearings offering low friction and faster rolling speeds.

Optional bearing seals lead to a minimal service requirement.

Due to their unique design, we are seeing weight savings over the competition of up to 25%.

The **S Glide** incorporates plain bearing elements. Perfect for high static load applications on any performance yacht.

The **Q Glide** is a snatch block much like the S Glide but with aluminium cheek plates and using the same high-end self-lubricating bearing sheaves. Designed with modern rope diameters in mind, it has a unique, easy-to-use magnetic positioner to hold plates together. No more mechanical catches or plunge pins.

## Steering Hub Update

Since its development and introduction last year, we have installed the RP Steering Hub on three projects. Magic Carpet 3 Wally Cento, Huisman 405 47m project (2023 delivery) and Allegra APC78 Multihull and are currently in discussions with four other projects. The RP Steering Hub is a geared system designed to assist the helmsman by reducing the steering load by approximately 25% on a sailing yacht. The Hub is designed



to seamlessly interface with the existing steering pedestal internal dimensions and the centre hub of the steering wheels and can be installed in new build vessels or retrofitted into existing vessels. The Steering Hub is ideal for both the racing and cruising markets as it allows the owner of the vessel to steer the boat for longer with greater comfort, ideal for seasoned yacht owners.

## Projects

2022 has seen a busy year in RP Hardware with continued product development. Our Automatic Locking headboard car range, launched last year, has increased in size to now cover 45T MWL and above. When we were asked by Graham Newton, captain of Hetairos for a solution to make initial hoisting and reefing of both main and mizzen sails a more simplified and quicker operation, the Automatic Locking car was the obvious choice and Twin Pawl HBT45 (45T MWL) and Twin Pawl HBT32 (32T MWL) units were supplied and installed by Rigging Projects. Utilizing our gaff locks, plugging in the gigantic square top sails is now a simple case of hoisting the main halyard from deck without the need to send multiple crew aloft. In addition, reefing the sails in upwind

race trim, which has previously been impossible, has now become a simple 1 min 30 sec operation. Whilst working with the Hetairos team in Antigua the Auto Locking Car caught the eye of the Captain of Kamaxitha, Huisman 55m. With a similar desire to simplify operations this summer saw our team of riggers installing and HB18 (18T MWL) and HB12 (12T MWL) in Tahiti. Both yachts have undergone extensive ocean passages since the installations were completed.

The new build sector has also kept our design team busy with new custom and standard products to deliver for the Gunboat 80, Baltic Botin 111 and the new Baltic 110 project to name a few, all of which are all launching summer next year.





## Service

2022 will be remembered as the service season that never ended! Unlike 'normal' years, our service workload never slackened off with the approach to summer. We attribute this, in part, to the Covid knock-on but also because of the tremendous work our guys have been doing in the field; growing our client base, alongside our new service centre in Zaandam, Holland.



While multihulls are still a massive part of our work rate, resulting in over 40 on-site visits from our team for unstepping, service, stepping, sea-trials and everything in-between, 2022 saw our superyacht service grow significantly on both sides of the Atlantic.

To name a few, our projects have ranged from complex hanger replacements whilst keeping the rigs in the boat on Mari Cha III in Connecticut, to unstepping the Nautor Swan 115 for a full rig service in Palma and also supplying the on-site expertise for a new build yacht in the UK. Our team has been working very hard to deliver complete client satisfaction.

With our own product range continuing to grow, much time has also been spent on the implementation of our hardware on some of the most iconic yachts gracing our oceans – see 'projects'.

The coming winter looks much the same, with many boats remaining in Europe for servicing. A number of our clients are hitting the warmer climes, where we'll be to deliver mid-season checks and service support.

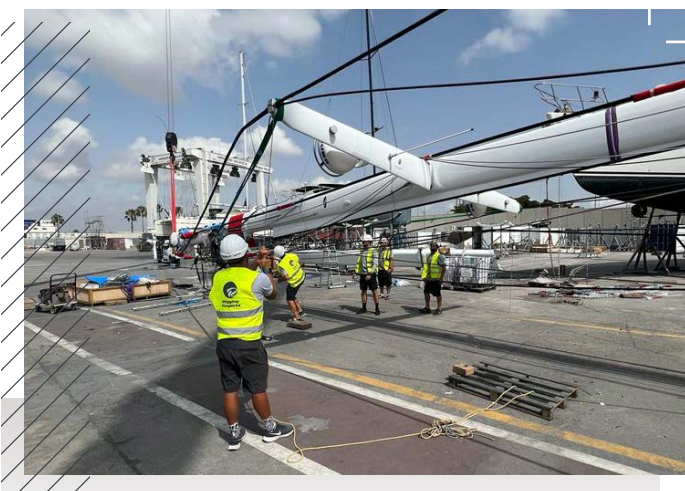


## Consulting and New Build Projects

New builds have been keeping us busy at Rigging Projects. We have been very lucky to work alongside Gunboat with their new flagship the 80. We are designing the deck layout with Gunboat and managing the new spar package for GB80-01 that is currently being built at Southern Spars. The boat will incorporate a new structured luff mainsail and jib so there have been some exciting challenges dealing with the loads generated by this technologically advanced yacht. GB80-01 is due to launch next year in the summer.

We are also proud to announce that we are working alongside Morrelli and Melvin on their new 72ft design semi foiler. Rigging Projects is designing the bespoke deck package and managing the spar package being made at Southern Spars. In the cruising catamaran world, the latest project is the Balance 750 which we are really excited to be working with. This is due for launch in 2024 and Rigging Projects is helping to manage the spar, deck and sailing package. The boat is being set up for long haul cruising.

In the world of monohulls, we have been working hard with the Baltic yard providing custom deck solutions for the B110 which will be incorporating our new range of Glide sheaves. We have also engineered custom pieces for the Botin Partners designed 111. Both of these boats are launching in the summer next year. In addition to these, we have also signed up to deliver custom engineering solutions to one of the most anticipated yachts to be launched in the coming years. Watch this space!





## Rigging Projects Group News



■ ■ We are pleased to announce that, at the beginning of September, Sam Sainsbury joined the team as General Manager. ■ ■

Sam's previous experience as a project manager, business manager, and manufacturing and procurement manager within the NTG group means he will bring a valuable set of skills and experience to our fast-paced business. Part of his responsibilities will be focusing on business and operational strategies, and integrating the newest addition to the Rigging

2022 has been an extremely busy year for Rigging Projects as our business continues to grow and develop. It is inevitable that with growth comes the need to strengthen the team to ensure we continue to deliver the high level of service our clients have come to rely upon and expect from us.

Projects Group, Rigging Projects Machining (RPM) into our day-to-day operations.

The past year has also seen several other new members join the Rigging Projects Team. Our design department has been busy developing new products and systems, and we were pleased to have Vincent Barrelet, Mechanical Engineer, and David Cordingly, Design Engineer, join us earlier in the year.

Another area we have added to is our project management department. We wanted to ensure that we have the infrastructure in place to support the increasing number of projects we are managing along with their growing complexity. Felix Trattner has joined our team as a project manager following the successful completion of his MSc in Maritime Engineering Science - Naval Architecture.

To keep all of us in line (not always easy!) and provide office support, our latest addition to the team is Anna Los. Anna takes the role of Office Administrator providing office-based support across the departments and businesses in the RP Group.

## Come and visit us at Mets 2022

**METS** MARINE EQUIPMENT  
**TRADE** SHOW  
15-16-17 NOV 2022  
AMSTERDAM

After a quieter but productive Mets last year, we're looking forward to seeing you all again at Metstrade 2022! Moving to Hall 1, Stand 01.540, Rigging Projects is exhibiting with more products and service offerings than ever.

Come and see the new Glide Series and bullet locks along with our extensive hardware range, and chat to the team about your upcoming projects. See you there!



Rigging Projects Ltd.  
Unit 5, Mitchell Point, Ensign Way,  
Hamble-le-Rice,  
Southampton SO31 4RF.

info@riggingprojects.com

www.riggingprojects.com

+44 23 8045 6358



Scan to view  
our new online  
catalogue

