

Key features:



Open plan living space



Integrated appliances



Neutral colour scheme



Full-size bath

KEY: ☒ = Standard, O = Optional Extra, L = Lifestyle Pack, X = Not Available

INTERIOR	30x20 2 Bed	40x20 2 Bed	42x20 3 Bed
Beadless internal wallboards & MDF tongue and groove fluted ceiling	✓	✓	✓
Privacy glass (in entrance doors, bathrooms windows, glazed internal doors*)	✓	✓	✓
Commercially rated carpet to lounge and bedrooms	✓	✓	✓
Herringbone vinyl flooring to bathrooms, hall and kitchen	✓	✓	✓
White switches and sockets with USB**	✓	✓	✓
Trace heating	✓	✓	✓
Gas condensing combi boiler with thermostatic radiators	✓	✓	✓
KITCHEN / DINING AREA			
Integrated appliances (fridge/freezer & microwave)	✓	✓	✓
5 ring gas hob, electric oven and grill with with integrated cooker hood	✓	✓	✓
Induction hob	●	●	●
Glass splashback	✓	✓	✓
Single-bowl sink with black kitchen tap	✓	✓	✓
Integrated dishwasher	●	●	●
Replace electric oven with gas oven	●	●	●
Wine cooler	●	●	●
Domestic soft close doors / drawers	✓	✓	✓
Velux window	●	●	●
Feature glassware rack	✓	✓	✓
Breakfast bar with two stools	✓	✓	✓
Venetian blind to kitchen window	✓	✓	✓
Hairpin leg dining table with dining chairs	✓	✓	✓
Feature pendant light above breakfast bar	✓	✓	✓
UTILITY*			
Freestanding washing machine or integrated washer/dryer*	●	●	●
Connection for washing machine*	✓	✓	✓
Full height storage cupboards	✓	✓	✓
LOUNGE			
Freestanding modular sofa with footstool	✓	✓	✓
Air bed with electric pump	✓	✓	✓
Feature woodburner style electric stove with remote	✓	✓	✓
Wall mounted TV bracket for 32" up to 50" (supplied to fit)	●	●	●
Sky/TV connection with electrical socket	✓	✓	✓
Dark grey sandstone feature wall	✓	✓	✓
Freestanding teddy fabric armchair	✓	✓	✓
Large industrial style metal framed mirror	✓	✓	✓
TV unit and coffee table	✓	✓	✓
Sideboard	✗	●	●
Voiles to windows	●	●	●
Bluetooth ceiling speakers	●	●	●

MASTER BEDROOM

King size bed, feature slatted headboard & Snoove mattress	✓	✓	✓
Hypnos mattress upgrade	●	●	●
Adjustable bedside lighting	✓	✓	✓
Dressing area with wardrobe, chest of drawers and mirror	✓	✓	✓
Freestanding bedside tables	✓	✓	✓
Dressing table with stool	✗	✓	✓
TV aerial connection & socket	✓	✓	✓
Velux roof window with blind	●	●	●
Deluxe bedding pack	●	●	●
Room darkening curtains and voiles	✓	✓	✓
White switches and sockets with USB	✓	✓	✓

MASTER EN-SUITE

Extractor fan	✗	✓	✓
Close coupled ceramic toilet with dual flush	✗	✓	✓
Domestic shower tray with wetwall & dual thermostatic shower with fixed rainfall head in a modern black finish	✗	✓	✓
Sit-on basin with drawered vanity unit & mirror	✗	✗	✓
Twin sit-on basin with drawered vanity unit & mirror	✗	✓	✗
Feature black towel radiators	✗	✓	✓
Washable roller blind	✗	✓	✓

ADDITIONAL BEDROOMS

Twin beds, feature headboards and Snoove mattresses	✓	✓	✓
3FT Mattresses	✓	✓	✓
Hypnos mattress upgrade	●	●	●
Freestanding bedside table	✓	✓	✓
USB charging points, TV aerial point and 240v sockets	✓	✓	✓
Room darkening roman blind	✓	✓	✓
Deluxe bedding pack	●	●	●

BATHROOM

Extractor fan	✓	✓	✓
Close coupled ceramic toilet with dual flush	✓	✓	✓
Bath with feature wet wall	✓	✓	✓
Shower over bath with screen	✓	✓	✓
Sit-on basin with drawered vanity unit & mirror	✓	✓	✓
Feature black towel radiators	✓	✓	✓
Washable roller blind	✓	✓	✓
Walk in shower to replace bath	●	●	●

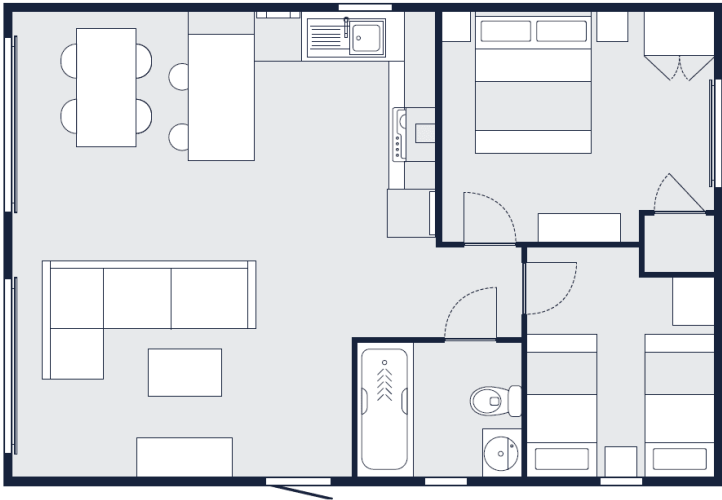
EXTERIOR

Light grey Artefoam exterior cladding	✓	✓	✓
Protech galvanised chassis	✓	✓	✓
White uPVC glazing & white gutters and downpipes	✓	✓	✓
CanExel cladding	●	●	●
Coloured uPVC glazing options	●	●	●
Steel pantile roof	✓	✓	✓
Front sliding patio doors to dining area	✓	✓	✓
Front sliding patio doors to lounge	●	●	●
Exterior up and down light & LED strip light	✓	✓	✓
Twin axle chassis	✓	✓	✓
Steel coated bargeboard with Graphite UPVC fascia and Victory bronze crest	✓	✓	✓
BS3632 : (2015) residential specification	✓	✓	✓

Faraday

FLOORPLANS

1



- 1. 30ft x 20ft 2 bed
- 2. 40ft x 20ft 2 bed
- 3. 42ft x 20ft 3 bed
- 4. 46ft x 20ft 4 bed

2



3



4

