

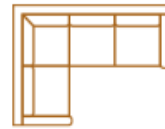
Key features:



Open plan living space



Stylish design features



L-shaped sofa



Two interior options

KEY: ☑ = Standard, ○ = Optional Extra, L = Lifestyle Pack, X = Not Available

	38x12 2 Bed	38x12 3 Bed
Lifestyle pack	●	●
INTERIOR		
Beadless internal wallboards	✓	✓
Water heater	✓	✓
Commercially rated carpet to lounge and bedrooms	✓	✓
Herringbone vinyl flooring to bathrooms, hall and kitchen	✓	✓
Trace heating	●	●
Gas condensing combi boiler with thermostatic radiators	L	L
KITCHEN / DINING AREA		
Integrated fridge/freezer	✓	✓
Integrated microwave	✓	✓
Integrated dishwasher	●*	●*
Integrated washing machine	●*	●*
Replace electric oven with gas oven	●	●
4 ring gas hob, electric oven & grill with integrated cooker hood	✓	✓
Stainless steel sink with coordinating satin silver swivel tap	✓	✓
Modern hairpin dining table, freestanding dining chairs and cushioned bench seat	✓	✓
Additional dining chairs to replace bench seating	●	●
Feature dining pendant light	✓	✓
Roller blind to kitchen and dining window	✓	✓
Feature glass splashback	✓	✓
Velux roof window in kitchen	●	●
LOUNGE		
Fixed L-Shaped seating with under seat storage & bed set up	✓	✓
Bluetooth ceiling speakers	●	●
Entertainment media unit with TV point and storage	✓	✓
Wall mounted TV bracket for 32" up to 50" (supplied to fit)	●	●
Integrated electric fire with log effect & remote control	●	●
Plain curtains with contrasting scatter cushions	✓	✓
Voiles to windows	●	●
Coffee table with hairpin legs	✓	✓
White switches and sockets with USB	✓	✓
Roller blind to window behind sofa	✓	✓

MASTER BEDROOM

King size bed with feature shelving headboard & mattress	✓	✓
Double bed with feature shelving headboard & mattress	✗	✗
Lift-up style bed with MFC frame	●	●
SnooVe mattress upgrade	●	●
SnooVe Gold mattress upgrade	●	●
Modern wardrobe and matching dressing table with organic shaped mirrors and storage drawers	✓	✓
Upholstered tub stool	✓	✓
White switches and sockets with USB	✓	✓
TV aerial point	✓	✓
Scatter cushions	✓	✓
Velux roof window in master bedroom	●	●
Roman blind with dim out fabric lining	✓	✓

MASTER EN-SUITE

En-suite extractor fan	●	●
En suite with close coupled ceramic toilet and pedestal sink	✓	✓
White washable roller blind	✓	✓
Black towel radiator	✓	✓

ADDITIONAL BEDROOMS

Twin beds with metal bedframes, feature shelving headboard & mattress	✓	✓
3FT Mattresses	✗	✗
Storage divan upgrade	✗	✗
SnooVe mattress upgrade	●	●
SnooVe Gold mattress upgrade	●	●
TV aerial point	●	●
Roman blind with dim out fabric lining	✓	✓
Wardrobe with internal mirror	✓	✓
White switches and sockets with USB	✓	✓

BATHROOM

Domestic shower tray with thermostatic shower and concrete effect domestic wet wall	✓	✓
Close coupled ceramic toilet with dual flush	✓	✓
Basin with vanity unit and mirror	✓	✓
Extractor fan	✓	✓
White washable roller blind	✓	✓
Black towel radiators	✓	✓

EXTERIOR

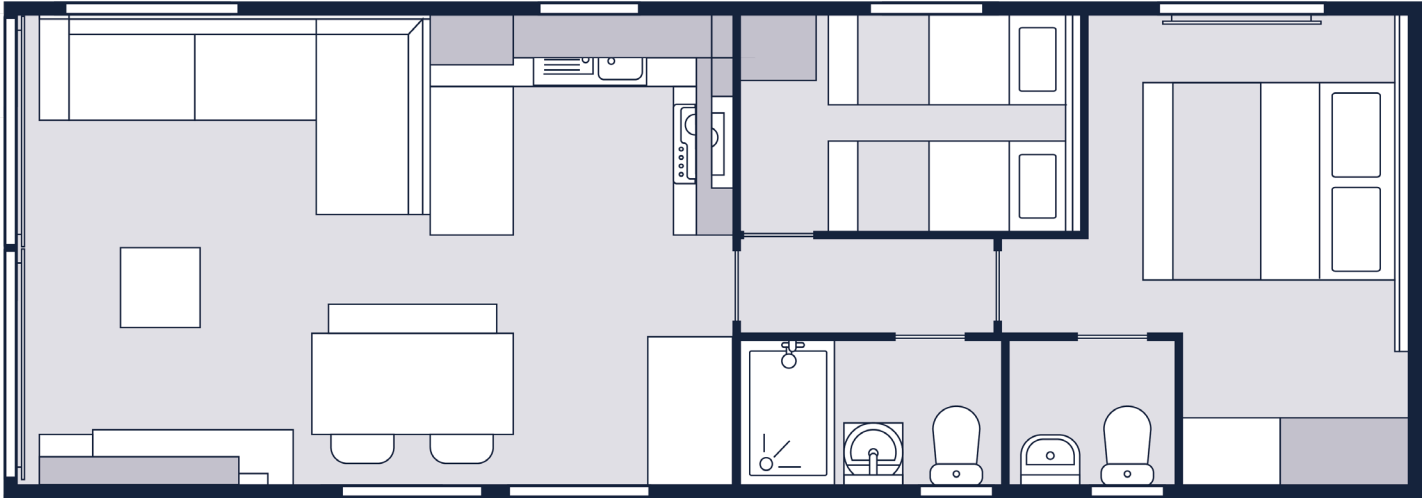
Light grey aluminium cladding	✓	✓
CanExel, Artefoam Plastic and coloured aluminium cladding options	●	●
White uPVC Glazing	✓	✓
Coloured uPVC Glazing	●	●
Front French doors	●	●
Front sliding double patio doors	●	●
Front single door	✗	✗
Exterior up and down light	✓	✓
Painted chassis	✓	✓
Fully galvanised Protech chassis	●	●
Single axle chassis	✗	✗
Twin axle chassis	✓	✓
Steel coated bargeboard with Graphite UPVC fascia and Victory bronze crest	✓	✓
LED strip light to bargeboard	●	●

KEY: ✓ = Standard ○ = Optional Extra L = Lifestyle Pack P = Platinum Pack
X = Not Available

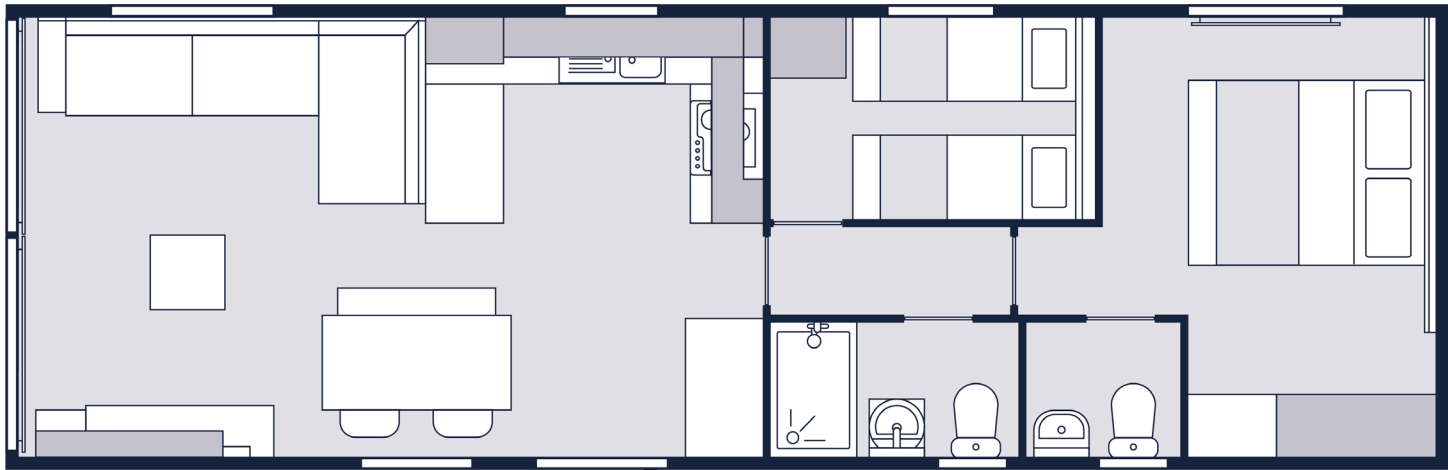
Brontë

FLOORPLANS

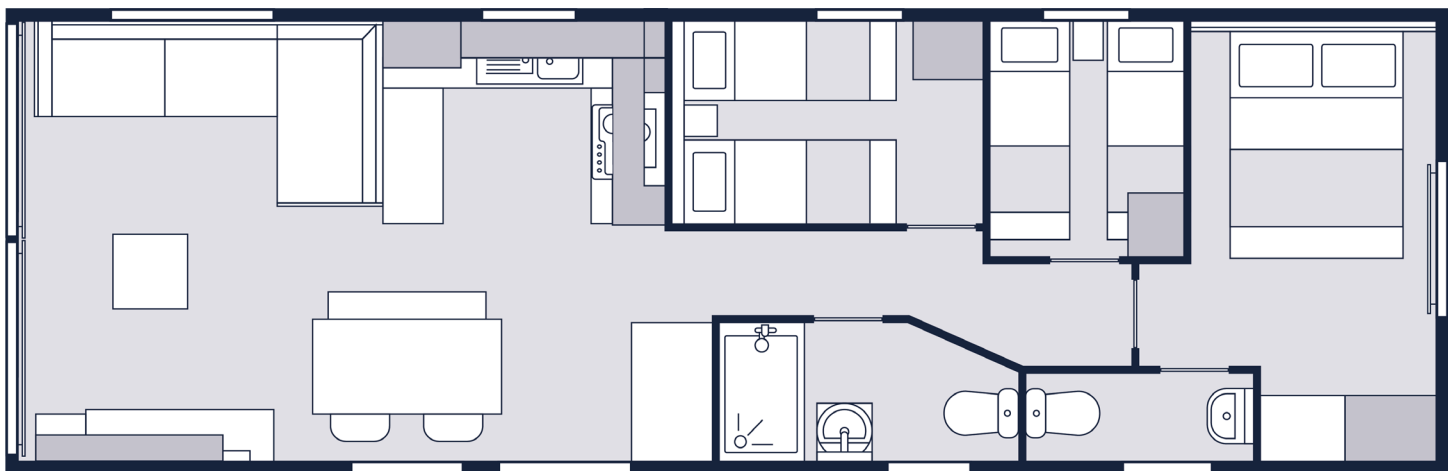
1



2



3



- 1. 35ft x 12ft 2 bed
- 2. 38ft x 12ft 2 bed
- 3. 38ft x 12ft 3 bed