



# MINING & UTILITY INDUSTRY SOLUTIONS



# WHY CHOOSE RS AS YOUR BUSINESS PARTNER?

## The only source you need

Whatever the industry sector, businesses are faced with an ever-changing world, financial pressures, and demanding stakeholders. Partnering with a collaborative, flexible, and forward-thinking supplier can help you complete your mission, while saving time and money.

We'll work with you to improve your supply management performance for commercial success. We'll deploy our suite of next generation inventory, procurement, and maintenance solutions designed to reduce costs and optimise productivity. We'll combine these with data insight which enables you to optimise your supply chain, sharpen your processes, and define cost saving strategies that will reduce the total cost of ownership and drive operational efficiency.

## Improve safety

All mines, Open Cut or Underground are extremely dangerous places to work. There will be very stringent Health and Safety focus on all areas of work. The levels of dust in the air are a high explosion risk factor. Many areas will be subject to IECEx legislation, mandating the use of intrinsically safe products. Due to the nature of the Utilities industry, safety is a key concern as working with energy, water or at height is a common occurrence. The correct PPE and safety equipment specification would be a high priority.

RS has a rapidly growing range of PPE and workwear by the local and global suppliers you trust. We have a range specifically for the harsh environments of mining & utilities industries.

Keep your site safe & secure your site with locks, security alarms & sensors, CCTV & security surveillance.

We have all the innovative automation & control technology to automate and control processes safety including automation signalling, sensors and industrial robots.

## Energy Management

The economic climates combined with environmental challenges are key drivers to maximising energy efficiencies within the Utilities sector. With carbon net zero on the horizon, energy efficiency is a hot topic.

Our products, services and solutions can help you reduce CO2 emissions and energy consumption, while driving down costs. We work with you to understand your needs, using a suite of energy efficient products and services expertly designed to take the heat out of energy management.

Our solutions are underpinned by digital expertise that takes advantage of the latest in energy efficiency technology to cut energy waste, reduce carbon footprint and help you meet your energy efficiency targets. From LED lighting to energy meters, we help you find the right products to achieve your energy efficiency, health and safety and productivity targets.

## Environmental Management

By its very nature mining is a destructive industry that has a huge impact on the environment. Great efforts are taken by the industry across the mining lifecycle to reduce environmental impact and ensure healthy air, land and water in areas in which they operate.

Our range of products and solutions can help you mitigate the risks and environmental impacts of our your operations.

## 01 Drive efficiencies in your business

We're specialists in Procurement, Inventory and Maintenance Solutions. Together, we can review your current processes and maintenance strategies to highlight areas with opportunities to save cost, reduce consumption and increase uptime.

## 02 Spend less time dealing with suppliers

Why deal with multiple suppliers? With over 750,000 industrial products and a host of services available, we save valuable time – and admin. With everything in one place, why go anywhere else?

## 03 Reduce costs

We're constantly looking for ways to drive efficiencies and save our customers money. Whether it's leveraging our purchasing power to get better prices, or offering quality RS PRO own brand alternatives, we can help reduce your costs

## 04 Service you can trust

We're a brand of global technical experts – committed to delivering the highest quality service levels. With day-to-day customer service provided through your Account Manager, backed up by our Customer Services and Technical Support teams, you can trust us to be here when you need us.

## 05 We are where you are

With our widespread global network we can provide a dependable delivery service, on your doorstep. Offering extensive custom order and delivery services we're in the perfect place to work with multi-site organisations.

## 06 We care about tomorrow

We're committed to working with our customers to help build a more sustainable future. Constantly looking for ways to reduce the impact we all have on the environment, we want to improve the wellbeing of our people, suppliers and communities.

## Contents

04 ESG COMMITMENT

08 OUR RANGE

10 OUR SERVICE SOLUTIONS

12 OUR MINING-UTILITIES

14 SAFE & SECURE SITE

26 HAZARDOUS SOLUTIONS

28 HARSH ENVIRONMENTS

36 INDUSTRY 4.0

40 SUSTAINABLE SOLUTIONS

42 MAINTENANCE & REPAIR



# OUR VALUES AND ESG COMMITMENT

Our values underpin our business, our people, and our processes. Our commitment to environmental and social governance guides and informs our action plan to ensure we are contributing to a better world.

## Passion

We keep everything simple and direct. We're loyal to our customers, suppliers and colleagues who value and trust us.

## Collaboration

Trust our collective genius. Our sum is greater than our parts; we offer and share our ideas, people and knowledge freely. We work flexibly across functions and geographies and everyone knows what they are here to do and why.

## Integrity

Be real and do the right thing. We are open and honest with one another and have the difficult conversations. We seek, listen to and respect different points of view. We embrace diversity and strive towards a global mind-set.

## Aspiration

If it's to be, make things happen with simplicity and speed. We need to trust ourselves to take the difficult decisions, move fast and take ownership. We offer support and constructive challenge to each other and hold each other to account.

## Accountability

If it's to be, make things happen with simplicity and speed. We need to trust ourselves to take the difficult decisions, move fast and take ownership. We offer support and constructive challenge to each other and hold each other to account.

## Innovation

Courage to do something bold. We cherish our heritage while focusing on the future. We lead in our field, searching for innovative products and original solutions. We celebrate creativity; we're courageous and support each other to experiment, take risks and learn from failure.



### Our 2030 ESG action plan

RS group has developed a global action plan to support a more sustainable and inclusive world with clear objectives and supports six of the United Nations sustainable development goals.

#### 4 GLOBAL GOALS BY 2030



##### 1. ADVANCING SUSTAINABILITY



We are developing sustainable operations, product and service solutions



##### 2. CHAMPIONING EDUCATION AND INNOVATION



We are building skills and fostering innovative solutions that improve lives



##### 3. EMPOWERING OUR PEOPLE



We are creating a safe, inclusive and dynamic culture where our people can thrive and grow



##### 4. DOING BUSINESS RESPONSIBLY



We ensure the highest ethical standards throughout our business and global value chain



# the washing machine project

Proudly partnered by  
**RS Group**

**The Washing Machine Project (TWMP) was founded in 2018 by British engineer Nav Sawhney, following a sabbatical in India.**

He witnessed women and children enduring many backbreaking hours washing clothes by hand. It's estimated that 70% of the world's population has no access to an electric washing machine.

Due to the time spent on it, hand-washing clothes presents a significant barrier to education for low-income and displaced people globally. This repetitive, demanding task can take up to 20 hours per week leading to chronic back/joint pain.

As a result, Nav decided to develop an affordable off-grid washing machine, the Divya. This manual-crank unit shares the same engineering principles as a salad spinner. It shortens the time spent washing clothes by 75% and requires 50% less water.

Following trials in 2020-2021, 100 Divyas are now used in the Jeddah 5 refugee camp in Mosul, Federal Iraq and Mamsharam Camp in Kurdish Iraq, with further pilots planned in Jordan and Uganda in 2022. TWMP has now received requests for orders in 25 countries for over 2,000 machines.

As part of its commitment to positively influence society and the environment through leveraging innovative technology, Electrocomponents chose TWMP as its first global social impact partner, providing it with support over a three-year period. This will provide c.7,500 machines to disadvantaged families and communities in 10 countries by 2023, benefiting c.100,000 people and contributing to future machine development.

The Washing Machine Project is supported by The Washing Machine Project Foundation, a registered charity in England & Wales (No.1193480).







# ENGINEERING TALENT FOR THE FUTURE

**We are proud of our partnership with Engineers Without Borders Australia, and their School Outreach program designed to inspire students from diverse backgrounds to create a better world through engineering.**

The EWB and RS partnership aims to not only inspire STEM, but strengthen relationships with First Nations communities, as well as contribute to initiatives that increase cultural understanding, the access of First Nations Australians to appropriate technology, and strengthen their career opportunities within the engineering sector.

EWB began in Melbourne in 2003 with a small group of engineers dedicated to harnessing the potential of engineering to create an equitable reality for the planet and its people. Today, the EWB community includes thousands of people and dozens of organisations working together to engineer a better world. EWB Australia's school initiatives deliver thematic learning modules to schools throughout Australia in metro ("Schools Outreach" program) and regional ("Regioneering" program) areas. The focus is on embracing diversity and engaging Indigenous and female students as well as those from low socio-economic backgrounds.

Over the past year, the EWB Outreach program organised 193 university undergraduate volunteers from the likes of RMIT, Sydney University and Monash to facilitate 266 workshops, inspiring more than 6000 students at 88 schools across the six states and territories in STEM and engineering. The EWB partnership is a significant step in our commitment as a business to create long standing ties with the ATSI community.

Learn more at [au.rs-online.com/ewb](http://au.rs-online.com/ewb)

## Regioneering

As part of our partnership, RS supports EWB's Regioneering program, providing grants to EWB volunteer Chapter teams to fund this important work.

Schools and community groups in marginalised areas, such as those located in remote regions, in lower socioeconomic areas and with higher populations of Aboriginal and Torres Strait Islander students, need assistance in promoting relevant, inspiring opportunities in STEM. As part of this program, EWB volunteers visit these communities, and play an important role as engaging role models with experience in a range of humanitarian engineering workshops that are practical, innovative, practical and inspiring. The one-hour workshops are experiential and provide young people with a brief introduction to what engineering is, who EWB is, and what it means to be a humanitarian engineer, creating solutions that take into account social, cultural and environmental contexts. They also achieve multiple curriculum objectives across mathematics, science and social sciences.

The program showcases the many options for a future that embraces human-centred engineering and related STEM vocations. We then give the students a real-world hands-on problem to solve, where they need to work in small teams with the support of our volunteers to design and build a prototype solution.



## HOW OUR SUSTAINABILITY EFFORTS IMPROVE MRO IN YOUR ORGANISATION



### Andrea Barrett

Vice President of Social Responsibility and Sustainability, RS Group

### Sustainability efforts at RS' parent company, RS Group, translate into improved MRO in your organisation, says Andrea Barrett, Vice President of Social Responsibility and Sustainability

This article is one of a series in which senior management at RS and its parent company, RS Group, explore Environmental, Social and Corporate Governance (ESG) and the role it plays strengthening strategies for better management of Maintenance, Repair and Operations (MRO) of company sites and facilities.

Here Vice President of Social Responsibility and Sustainability at RS Group, Andrea Barrett, shares how sustainability measures introduced within the organisation benefit customers who rely on RS as a trusted supplier for MRO.

#### Our focus on sustainable operations

In recent years, we've had a real focus within the RS Group on delivering more sustainable operations. For example, as outlined in our recent ESG plan, we have cut our scope one and two carbon emissions from our premises energy usage by 62 percent since 2014/15.

However, unlike in a scenario where we saved a food manufacturer £200,000 through a more sustainable lighting system, many of these efforts to improve sustainability are not changes which customers can see, touch of feel.

We will be introducing more carbon reporting so the organisations we supply can better understand the progress we're making and, crucially, how this reduces their scope three emissions – that is indirect emissions that occur in their value chain, whether upstream or downstream. In the meantime, these are just some of the ways that our sustainability targets contribute to improved MRO in your business.

#### Cutting your scope three emissions with renewable energy

With any sustainability or net zero plan, moving to renewable electricity is a basic first step.

As of 2021, 67 percent of our electricity was from renewable sources, and we are striving to get that to 100 percent by the middle of the decade.

We've put solar panels and a green grass roof on the new extension at our Bad Hersfeld site in Germany, capable of generating 750 kW capacity and they feed energy back into the local power grid too. We've also implemented energy efficiency measures such as LED lighting controls in distribution centres to really reduce energy consumption in the first place.

#### Making it easier to recycle packaging

We've done a lot on waste, with 76 percent already recycled, and we're doing more around packaging.

We're buying more sustainable packaging alternatives that contain recycled content and can be recycled at the end of its life. We

switched our Jiffy parcel carriers in the UK, for instance, over to recyclable envelopes. We're also reducing packaging through the use automated packaging machines. Three of our big distribution centres have these and they fit packaging to the order.

#### Reducing the carbon footprint of your supply chain

We are a distributor. We're moving 60,000 products daily, so transport is one of the most significant parts of our carbon footprint – and so a significant contributor to the scope three emissions of our customers.

We're tackling this by restructuring our supply chain to source, store and deliver products closer to where our suppliers and customers are, so they travel fewer miles. This is made possible by our global footprint of 12 distribution centres.

We're also selecting less carbon intensive modes of transport such as road, rail or sea rather than aviation. To give an example, we know that having switched the replenishments to our Asia Pacific distribution centres in late 2020, we're saving 60 percent of carbon emissions on those lines.

#### Ensuring your products meet ethical standards

Sustainability isn't just about the environment.

It's also about taking care of people.

Now, as well as oversight of the materials going into your products, you've got to have oversight of the people involved in the whole supply chain to make sure that it is ethical and, thus, sustainable in the long term. You have to map your supply chain to gain that visibility, set standards for supplier codes of conduct and ethical trading and check that these are clear and adhered to. It is not just a one-time tick box exercise.

As a company, we're taking a strong approach to make sure that we're working with suppliers who are signed up to rigorous ethical and environmental standards. This is something we're keenly focused on. With RS Pro, our main own label brand, we already map suppliers and understand the hazards involved. We do face to face ethical inspections, with 89 audits of our highest risk suppliers over the last two years.

More broadly, we've introduced a new ethical trading declaration for our suppliers, signed up to the UN Global Compact and have just started a new partnership with leading supply chain management platform Sedex to further develop our level of visibility and ethical trading tools.

**Facilitating collaboration** The biggest part of our carbon footprint is outside of own operations. It is the same for many companies, particularly in the industrial sector, because of the life cycle of the products and their movement. Therefore, one of the biggest challenges for our customer and supplier partners across the value chain is to work all together to improve ESG standards and performance.

It's about collaboration. Customers are demanding sustainable solutions and more ethical and sustainable goods – and suppliers are responding to that. This is where Electrocomponents has a unique role to play because we can bring the whole community together to really affect positive change.

**To learn about the sustainability goals RS is pursuing and how they support MRO best practice within your organisation, read about the 2030 ESG plan in another article from this series by senior management at RS, exploring ESG and its importance for better management of MRO on [rs-connectedthinking.com](http://rs-connectedthinking.com).**



# PRODUCT RANGE

We offer a broad and extensive product range to support our industrial and electronics customers with 650,000+ stocked products, from over 2,500 suppliers – including our own brand, RS PRO.

We have built strong relationships with leading manufacturers and have a unique position as a multi-brand distributor of electrical, automation, electronics, and maintenance products.

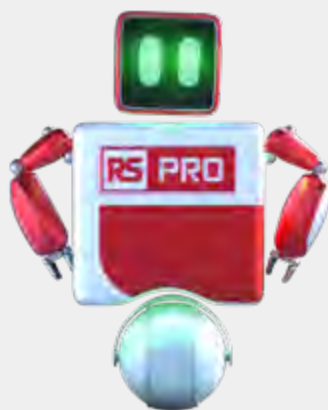
Here is a snapshot of our most popular global and local brands:



## RS PRO

RS PRO is our own-brand product range of more than 65,000 high-quality, competitively priced industrial product and electronic components.

RS PRO offers customers a choice where the combination of quality, performance and price create exceptional value. All RS PRO products and components are backed by the RS Seal of Approval, representing leading industry standards for audit, inspection, test and certification.



View all 2,500 brands online at [au.rs-online.com/our-brands](http://au.rs-online.com/our-brands)

## ELECTRONICS COMPONENTS, POWER & CONNECTORS

- Batteries & Chargers
- Connectors
- Displays & Optoelectronics
- Passive Components
- PCB Prototyping
- Power Supplies & Transformers
- Raspberry Pi, Arduino & Development Tools
- Semiconductors



## ELECTRICAL, AUTOMATION & CABLES

- Automation & Control Gear
- Cables & Wires
- Enclosures, Storage & Material Handling
- Fuses, Sockets & Circuit Breakers
- HVAC, Fans & Thermal Management
- Lighting
- Relays
- Switches



## MECHANICAL PRODUCTS & TOOLS

- Abrasives & Engineering Materials
- Adhesives, Sealants & Tapes
- Facilities Cleaning & Maintenance
- Fasteners & Fixings
- Hand Tools
- Plumbing & Pipeline
- Pneumatics, Hydraulics & Power
- Transmission
- Power Tools, Soldering & Welding



## IT, TEST & SAFETY EQUIPMENT

- Computing & Peripherals
- Facilities Cleaning & Maintenance
- Office Supplies
- Personal Protective Equipment & Workwear
- Security & Ironmongery
- Site Safety
- Test & Measurement





# SERVICE SOLUTIONS

## OUR SERVICE SOLUTIONS SUPPORT YOU ACROSS THE PRODUCT LIFE CYCLE THROUGH DESIGN, BUILD AND MAINTAIN.

We can also give you advice on flexible delivery options, cost-saving ways to help you manage your inventory and procurement, through to preventative maintenance and eCommerce solutions.



### Delivery & Inventory Solutions

- With a range of flexible delivery and collection options, we make it easy for you to receive their order when and where you need it.
- From **next working day** to **consolidated deliveries** and **vendor managed inventory**, we have a range of flexible delivery options to suit your needs.\*
- **Large local stock holding in Australia** for fast delivery plus access to our global network of distribution centres.



### Product Support

- We offer easy access to product support resources online or by phone.
- Our Customer Services team can help understand your needs offering product support or directing your enquiry to a qualified engineer.
- Speak to a live chat member on our website for help in finding products or other technical information.
- Or take a look at our technical data sheets which are available at product level. This can help save time, allowing you access to technical information 24/7.



### Calibration

- The RS calibration service maintains compliance across a wide range of assets to international standards. From thermometry to test meters and measuring devices, you can be confident your equipment is compliant.
- Buy new, calibrated, ready-to-use equipment or, request recalibration of your own products with a fast turnaround and delivery.
- ISO9001:2015 Standard or NATA-accredited laboratory.



### Invoice Options & FlexiPay+

- Stay in control of your spend and reduce your purchase to pay costs with our invoicing and payment services.
- FlexiPay+ is a rent to own solution for you to turn your business' capital expenses into operating expenses for a customised solution.\* It allows you to access the equipment you need now without the high initial setup costs as well as unlock access to industry leading value added services.

[au.rs-online.com/mining-utilities](http://au.rs-online.com/mining-utilities)



### Product Plus

#### Want to source products from RS that aren't published on our website?

- Product Plus is an exclusive service for customers looking to consolidate their spend. Our specialist team can support your requirements and help you source products not published on our website. \*
- Using our expertise and relationships with over 2,500 key manufacturers, we provide access to over a million products. We will also let you know if we find an alternative product offering extra functionality or value for money benefits.
- What's more, consolidating more of your purchasing with RS reduces purchase orders, saves time sourcing and helps you leverage your spend.



### Maintenance Solutions

- RS Maintenance Solutions ultrasonic air leak inspections can help create massive financial and carbon savings with a rapid payback period.\*
- An RS Maintenance Solutions energy loss auditor will attend site and perform a non-intrusive fault-finding survey of your compressed air systems using airborne ultrasonic technology. This method will both identify the fault and assess its severity in terms of cost.
- A full itemised report is then generated, with detail of leak size, cost and estimated payback time if remedial work is carried out.



### eCommerce Solutions

For a more efficient process for your industrial and electronics product procurement, we have a service to fit your business requirements. From web-based and mobile ordering through to integrated procurement solutions.

- **PurchasingManager™** - A free web order management solution that helps you manage your spend, whilst providing visibility of orders placed through the RS website.
- **PunchOut** - Integrated into your own eProcurement system, providing fast and easy access to our full product range and purchase information.
- **eInvoicing** - Fast and secure invoicing direct from our system to yours. Eliminates paper, whilst saving you time and money in administration processes.
- **eOrdering** - Fast and secure ordering direct from your system to ours. Improves accuracy by eliminating order and invoicing errors.

 [ANZSolutions@rs-components.com](mailto:ANZSolutions@rs-components.com)

\*Qualifying criteria and minimum order quantities may apply for some services. Orders placed through RS Product Plus, FlexiPay+ and other services are subject to additional terms and conditions.



# SAFE & SECURE SITE

From head to toe, our range of PPE and workwear can keep your people safe and comfortable. Plus everything you need for a secure site.



Browse and shop thousands more brands and products online at [au.rs-online.com](http://au.rs-online.com)

## Boot Covers

- Designed in a generous size making them easy to put on, with ankle ties for a secure fit.
- Provide a barrier between footwear and the environment.
- Keeping floors clean from contamination, no need to remove street footwear.
- Generous size, easy to put on
- Plastic ties for ankle, elastic at top
- Double layered on sole
- Waterproof
- One size fits all



**pro-val**  
**235-2980** Box of 250 50506

## Frontier Foam ear plugs

- Protection for noise levels up to 112 dB
- Soft PU memory foam for comfort
- Hi-vis colour to identify wearer compliance
- Approved to AS/NZS 1270:2002



**241-8253** Corded, Box of 100 FRPLUGCRDYY00C5  
**241-8539** Uncorded, Box of 200 FREARPLUGYY00C5

## FRONTIER Face Shield with Chin Guard

- Ratchet adjustable brow guard
- Absorbent terry towelling headband
- Wide vision
- Anti-scratch



**241-8540** Resistant To Liquids FRFSHIELDCR0000

## White Polypropylene Disposable Face Mask

- EVA foam nose seal for added comfort
- Adjustable nose bridge for secure fit
- Valve aids in expelling hot air and assists breathing



**pro-val**  
**235-2842** One Size 30124  
**235-2843** One Size 30129

## ADAPT™ Range Octane Zip Black Safety Boots

- The combination of electrical HAZARD certification and the performance features of the ADAPT™ Range makes the Octane Zip ideal for electricians and construction workers that work on uneven surfaces and can be exposed to electric currents.
- ZIP closure provides easy access and a quick exit in emergencies



Size	SKU
241-8296 6	MKOCTANEZBBF060
241-8297 6.5	MKOCTANEZBBF065
241-8298 7	MKOCTANEZBBF070
241-8299 7.5	MKOCTANEZBBF075
241-8300 8	MKOCTANEZBBF080
241-8301 8.5	MKOCTANEZBBF085
241-8303 9	MKOCTANEZBBF090
241-8304 9.5	MKOCTANEZBBF095
241-8305 10	MKOCTANEZBBF100
241-8306 10.5	MKOCTANEZBBF105
241-8307 11	MKOCTANEZBBF110
241-8308 12	MKOCTANEZBBF120
241-8309 13	MKOCTANEZBBF130
241-8310 14	MKOCTANEZBBF140



## 7500 Series Half-Mask

- Extremely pliable, soft silicone face piece
- 3M™ Cool Flow™ Valve to reduce heat build-up inside the respirator
- Built to last: Durable construction and a wide range of spare parts



**3M**  
**773-4444** Large 7503  
**773-4441** Medium 7502

## 6000 Series Half Face Respirator

- Face Piece is made from soft, lightweight material Cradle head harness and easy to fasten neck strap
- Dual filter design and Airline system available
- Bayonet style fitting cartridges and filters
- Minimal obstruction to overall vision breath and moisture downward



**3M**  
**773-4454** Medium 6800  
**773-4463** Large 6900

## 6000 Series Full Face Respirator

- Reliable, convenient, compatible respiratory protection
- Helps provide respiratory protection against a wide variety of gases and vapors when used with approved cartridges and filters
- Unique center adapter to direct exhaled breath and moisture downward



**3M**  
**773-4454** Medium 6800  
**773-4463** Large 6900

## Welding Respirator Kit

- Ideal for working in hot and humid conditions or during prolonged use
- Includes:
  - 1 x 3M™ Half Face Respirator 7500 Series - Medium
  - 1 x pair of 3M™ Particle & Metal Fume Filters 2128, GP2
  - 4 x 3M™ Respirator Cleaning Wipes 504
  - 1 x 3M™ Skull Screws™ Earplugs P1300, Class 5
  - 1 x 3M™ Respiratory Protection Guide
  - 1 x Handy Storage Container



**3M**  
**777-0456** Kit 7528

## Fahrenheit™ Goggles

- Soft PVC frame and clear poly hard coat lens
- Specially designed to fit with prescription glasses, dust mask or respiratory half-mask
- Aerodynamic shape with cylindrical lens for 180° of distortion-free vision
- Indirect ventilation system prevents fogging and guards against liquids and dust



**3M**  
**774-3937** Anti-mist, Clear lens 40173-0000

## Respirator Cleaning Wipes

- Pre-moistened towelettes for hygienically cleaning reusable respirators
- Alcohol free and individually packaged in sealed sachets
- Uses Benzalkonium Chloride - a quaternary ammonium compound as a sanitiser



**3M**  
**777-0450** Box of 100 504

## Particulate Respirators 8000 Series

- Provide effective respiratory protection for use in industries where workers will be exposed to dust particles and/or nonvolatile liquid particles.



**3M**  
**774-3880** P1 Unvalved 8710  
**774-3886** P1 Valved 8812  
**774-3899** P2 Unvalved 8210

## 2000 Series Particulate Filters

- Low breathing resistance
- Durable, water-resistant & flame retardant.
- Bayonet fitting ensures precise & safer locking
- For all 3M 6000, 7000 & 7500 Series Half Masks & Full Face Masks

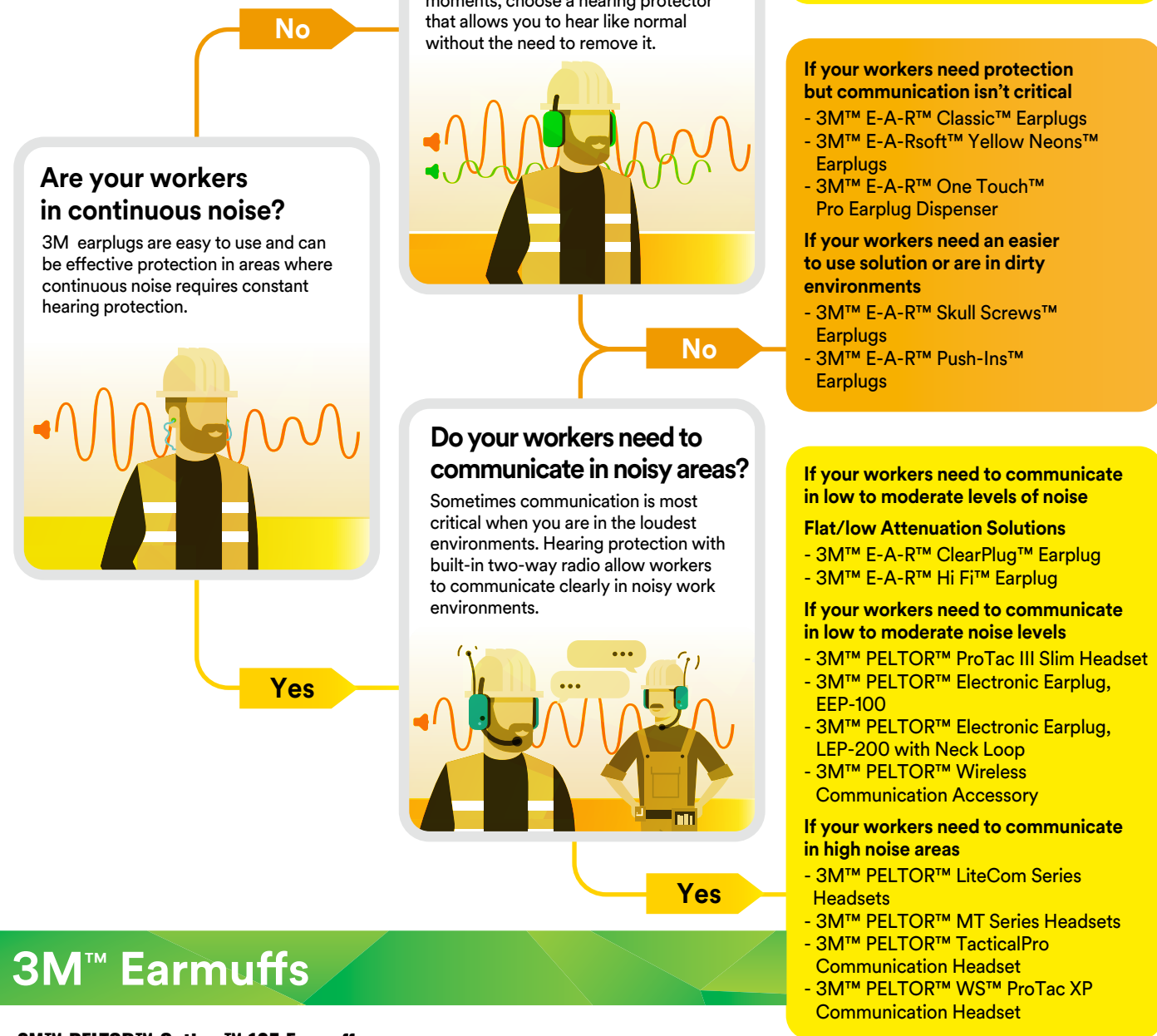


**3M**  
**774-3846** P2 2125  
**774-3855** P2/P3 2135  
**774-3842** GP2/GP3 2138



## Choose the right Hearing Protection Solution

Discover product options designed for different work environments.



## 3M™ Earmuffs

### 3M™ PELTOR™ Optime™ 105 Earmuff

- Optime™ 105 Earmuff is a high performance hearing protector and has been developed for use in extremely noisy environments. Proprietary dual-cup design and soft, foam-filled cushions provide high attenuation and outstanding comfort
- NRR dB\*

774-4022



H10A

## 3M™ Disposable Earplugs

### E-A-Rsoft™ Yellow Neons™ Earplugs

- Smooth texture for in-ear comfort, are made of an advanced foam for all-day wear and are available in two sizes. Brightly colored for hearing protection compliance sighting, these earplugs are an excellent choice for any hearing conservation program
- Available with Cord
- Slow-Recovery Foam
- NRR 33 dB\*



774-3959 Regular Earplug Uncorded 312-1250  
774-3962 Large Earplug Corded 311-1251

### 3M™ E-A-R™ TaperFit™ 2 Earplugs

- Soft, roll-down foam earplugs conform to the unique shape of each ear to help provide a low-pressure, comfortable seal. Offered in two sizes.
- Available with Cord
- Slow-Recovery Foam
- NRR 33 dB\*



774-3969 32dB, Box of 200 312-1219

### 3M™ E-A-R™ Classic™ Earplugs

- Classic earplugs were the industry's first foam earplugs, virtually revolutionizing hearing protection. Today, the revolution continues. Classic earplugs meet wearer and environmental needs with its proprietary foams, preferred cylindrical shape and proven in-ear comfort.
- Available with Cord
- Moisture Resistant
- Slow-Recovery Foam



774-3943 Classic™ Earplug Uncorded, Pillow Pack 310-1001

## 3M™ Push-to-Fit Earplugs

### 3M™ No-Touch™ Foam Earplugs

- Soft, purple No-Touch™ foam earplugs create a hygienic, noise-reducing seal in the ear with soft foam, a smooth tapered shape and paddle stems. Push-to-fit design makes inserting hearing protection easy, with no roll-down required. Available with or without cord.
- Available with Cord
- Slow-Recovery Foam
- No Roll-Down Required
- NRR 29 dB\*



774-3975 29 dB P2001

### E-A-R™ Express™ Pod Earplugs

- The unique pod design of Express earplugs allows the foam to compress easily so the earplug slides gently into the ear and expands slowly, making an effective seal for most earcanals.
- Available with Cord
- Slow-Recovery Foam
- No Roll-Down Required
- 19 dB (Class 3)



774-3984 Assorted Corded, Pillow Pack 321-2115

## 3M™ Banded Hearing Protectors

### E-A-Rflex™ Banded Earplugs

- A comfortable, effective, lightweight alternative to earmuffs
- Ideal for people who fit and remove their hearing protection frequently. Soft tips pivot to help maintain a comfortable, noise-blocking seal. Multi-position wearing with conical tips. Multi-pivot tips and flexible band
- A versatile earplug alternative with multi-position wearing
- Easy to use tapered pods allow for easy hygienic insertion
- 15dB



774-3993 6 pairs per package

350-3001

## 3M™ Reusable Earplugs

### 3M™ E-A-R™ UltraFit™ Earplugs

- A proven triple-flange design and pliable, pre-molded material make UltraFit™ earplugs a good option for most ears. These durable, reusable earplugs are easy to use again and again, reducing waste. They can be cleaned easily with soap and water. Since there is no need to roll them down before inserting, simply push them into the ears for clean and comfortable noise reduction
- Available with Cord
- Slow-Recovery Foam
- No Roll-Down Required
- NRR 25 dB\*

774-3987 UltraFit™ Earplug Corded



340-4004





Nitrile Orange PF Disposable Gloves

- Powder free Nitrile Disposable gloves, non-medical grade, non-sterile, single use
- On-line Chlorinated for easy put on and take off with textured finger tips for good grip
- Ambidextrous with beaded cuff



235-2911	Small	41135
235-2912	Medium	41136
235-2913	Large	41137
235-2914	XL	41138
235-2916	XXL	41139

Securitex HR Gloves

- Powder free latex hi-risk gloves, non sterile, single use
- On-line Chlorinated for easy put on and take off with textured surface for good grip
- Ambidextrous with beaded cuff



235-2883	Small	41066
235-2884	Medium	41067
235-2885	Large	41068
235-2887	XL	41069
235-2888	XXL	41070

NITRILE 46'S General Purpose Nitrile Rubber Work Gloves

- Unlined, pebble grip nitrile based gloves
- Latex free gloves, ideal for latex allergy sufferers
- Extra long 46cm in length and 0.55mm thickness



235-2939	Size 8 (Bag of 12)	41263
235-2940	Size 9 (Bag of 12)	41264
235-2941	Size 10 (Bag of 12)	41265

Ringers Super Hero Yellow Work Gloves

- Knuckle TPR design with two detached fingers for flexibility
- Durable synthetic leather palm for enhanced grip
- Split-fit padded palm for comfort
- Reinforced thumb, index, and middle finger tips for durability
- Secure cuff closure with hook and loop TPR pull tab
- Wrap around index finger protecting wear and tear zone



Ansell

223-3777	Size 8	161-08
223-3778	Size 9	161-09
223-3780	Size 10	161-10
223-3781	Size 11	161-11
223-3782	Size 12	161-12
223-3783	Size 13	161-13

Rig-Lizard Thin Lizzie safety glove

- Purpose-built to provide maximum grip in tough situations with over five grip options for water, oils, muds, and lubricants
- Each glove is launderable and also equipped with our highly flexible, keeping hands protected from smash and pinch injuries



uvex

237-4390	Size 6	2090X06
237-4391	Size 7	2090X07
237-4392	Size 8	2090X08
237-4393	Size 9	2090X09
237-4394	Size 10	2090X10
237-4395	Size 11	2090X11
237-4396	Size 12	2090X12

FNG1 Black Nylon Work Gloves

- Made out of nylon and micro foam nitrile palm
- Excellent grip in oily and wet conditions
- Aero ventilation technology evaporates sweat and moisture
- Keeps hands cool when worn for extended periods



235-2974	S	41667
235-2975	M	41668
235-2976	L	41669
235-2977	XL	41670
235-2978	XXL	41671

Neo Heat 350 Heat Resistant Neoprene Work Gloves

- Level 2 resistance to contact heat (EN407)
- Seamless cotton liner for excellent comfort and fit
- 38cm long and thickness of 1.4mm
- Resistant to a wide range of chemicals
- Resistance to abrasion, blade-cut, tear and puncture



235-2948	Size 9 (1 Pair)	41288
235-2949	Size 10 (1 Pair)	41289

PROTECTION SOLUTIONS FOR INDUSTRY PROCESSES



Ansell is dedicated to worker safety: we provide a comprehensive range of hand, arm and body protection solutions to cover needs across many industries. Before selecting a product, ensure a risk assessment of the hazards has been conducted to determine that the product will provide an appropriate level of protection.

MINING INDUSTRY PROCESSES



**Applications:**

- Signalling/positioning
- Operating of heavy machinery
- Pipe handling

**User needs:**

- Abrasion resistance
- Dexterity
- Comfort
- Back-of-hand protection

HyFlex® 11-751   Ringers 065

HyFlex® 11-840   HyFlex® 11-801

**Applications:**

- Drilling and blasting
- Hydraulic set and testing
- Loading and hauling

**User needs:**

- Dexterity and grip
- Comfort
- High visibility
- Crush protection

ActivArm® 97-013   Ringers 161

HyFlex® 11-926   Ringers 065

HyFlex® 11-937   TouchNTuff® 93-250

**Applications:**

- Crushing and unloading ore
- Primary grinding
- Inspection of primary product

**User needs:**

- Enhanced wet/oil grip
- Chemical resistance to splashes
- Comfort for hot environments
- Back-of-hand protection

AlphaTec® 58-735

AlphaTec® 58-270   AlphaTec® 1500\*



**Applications:**

- Hydraulic repair
- Product inspection
- Shipping and loading of product

**User needs:**

- Wet and oil grip
- Chemical splash resistance
- Cut protection
- Crush protection

HyFlex® 11-927   AlphaTec® 58-128

ActivArm® 97-013   Ringers 065

**Applications:**

- Vehicle maintenance
- Conveyor and long wall maintenance
- Re-fuel oil, fluid and diesel

**User needs:**

- Cut resistance
- Durability
- Dexterity and tactility
- Crush protection

HyFlex® 11-840   Ringers 161

HyFlex® 11-939   AlphaTec® 1800 STANDARD\*

TouchNTuff® 93-250

**Applications:**

- Accidental chemical releases
- Rescue/extraction from confined spaces
- Basic first aid

**User needs:**

- Chemical protection
- Crush protection

MICROFLEX® 93-852

MICROCHEM® 6000

AnsellGUARDIAN®

AnsellGUARDIAN® is our consultative service to help companies select and implement the right personal protective equipment solutions to improve safety, increase productivity and reduce costs. Using our 125 years of experience, proprietary software system and database of over 30,000 chemicals, we analyze PPE needs and identify the solutions that will work best for each company's unique risks and applications. As an industry pioneer with the most advanced technology and analytics, we have evaluated and implemented best business practices in over 15,000 facilities worldwide, reducing injuries and saving companies a total of \$165M. AnsellGUARDIAN® assessments address 7 functional areas:

Ansell Guardian® Chemical can be consulted to provide an assessment of the level of chemical protection offered by our products and may assist in the risk assessment. The determination of suitability of Ansell hand, arm and body protection solutions is the final responsibility of the user.





# uvex

## protection for mining

Falling debris? Uneven ground?  
Abrasive material handling? Airborne dust?  
uvex provides optimum solutions for multiple  
head to toe applications.

### Innovative safety spectacles for all mining industry applications

The **uvex pheos cx2** provides reliable  
protection against mining site  
dust, and features an ergonomic  
eye shield for exceptional comfort  
– even during long-term wear.

### Flexible safety gloves to enable your team to get to grips with the task at hand

The **uvex phynomic XG** glove fits like  
a second skin, and features an  
innovative coating for extra grip  
when handling oily workpieces.

### Safety footwear range built to exceed expectations

The **uvex 3 x-flow** work boots are ideal  
for workplaces that demands the  
footwear durability and stability with  
technology that helps with exposure to  
electrical hazards and uneven surfaces.



uvex pheos cx2



uvex phynomic XG

197-2004	Clear	9198-202
237-4559	Grey	9198-200
237-4560	Amber	9198-201
237-4558	Light Brown	9198-065

237-4429	Size 6	60070F00
237-4428	Size 7	60070F0
237-4430	Size 8	60070F1
237-4431	Size 9	60070F2
237-4433	Size 10	60070F3
237-4434	Size 11	60070F4



uvex 3 x-flow

Black/Tan, Standard, Sizes EU 39 - 48 (UK 6 - 13)	65428
Black/Tan, Extra wide, Sizes EU 41 - 45 (UK 7 - 10.5)	65420
Tan, Standard, Sizes EU 41 - 45 (UK 7 - 10.5)	65458
Tan, Extra wide, Sizes EU 41 - 45 (UK 7 - 10.5)	65450

## protecting people



## WORKWEAR

### 3858 Hivis Protector Drill Jacket

- 311 gsm heavyweight 100% cotton drill  
out shell with cotton lining
- 3M reflective tape throughout the Hi-Vis range
- Heavy duty nylon zipper, velcro closure sleeve



238-3104	Yellow/Navy XXS	3858	238-3092	Orange/Navy XXS	3858
238-3103	Yellow/Navy XS	3858	238-3091	Orange/Navy XS	3858
238-3102	Yellow/Navy XL	3858	238-3090	Orange/Navy XL	3858
238-3101	Yellow/Navy S	3858	238-3089	Orange/Navy S	3858
238-3100	Yellow/Navy M	3858	238-3088	Orange/Navy M	3858
238-3099	Yellow/Navy L	3858	238-3087	Orange/Navy L	3858
238-3093	Yellow/Navy 2XL	3858	238-3081	Orange/Navy 2XL	3858
238-3094	Yellow/Navy 3XL	3858	238-3083	Orange/Navy 3XL	3858
238-3095	Yellow/Navy 4XL	3858	238-3084	Orange/Navy 4XL	3858
238-3096	Yellow/Navy 5XL	3858	238-3085	Orange/Navy 5XL	3858
238-3097	Yellow/Navy 6XL	3858	238-3086	Orange/Navy 6XL	3858

### 3481 Inherent FR PPE2 2 tone D/N coveralls

- Flame resistant
- HiVis day/night  
fabric design
- Sun protection, cool-  
breeze airflow vents
- Carbon grid anti-st
- 230gsm ripstop weave  
61% modacrylic, 30%  
cotton, 5% para-aramid,  
3% A100 tencel, 1% anti-  
static inherent FR fabric



238-2896	Yellow/Navy 102R	3481
238-2898	Yellow/Navy 107R	3481
238-2906	Yellow/Navy 77R	3481
238-2908	Yellow/Navy 87R	3481
238-2909	Yellow/Navy 92R	3481
238-2911	Yellow/Navy 97R	3481

### Hi-Vis Warsaw Executive Vest Waistcoat

- Warsaw executive vest waistcoat
- High visibility
- Reflective tape marking  
– increased visibility
- Contrast panels for  
dirt protection



141-8177	Orange S	1418168	Yellow S
141-8178	Orange M	141-8169	Yellow M
141-8179	Orange L	1418170	Yellow L
1418183	Orange XL	141-8174	Yellow XL
1418292	Orange XXL	141-8176	Yellow XXL

### 3455 Inherent FR Modacrylic Work Shirt

- Flame resistant
- Carbon grid anti static
- HiVis day/night
- Ultraviolet resistant
- Cool breeze  
airflow vents



238-2826	Yellow/Navy S	3455
238-2818	Yellow/Navy 2XL	3455
238-2819	Yellow/Navy 3XL	3455

### 3455 Inherent FR 2-Tone Modacrylic Work Shirt

- Flame resistant
- Carbon grid anti static
- HiVis day/night



238-2803	Yellow/Navy S	3445
238-2802	Yellow/Navy M	3445
238-2801	Yellow/Navy L	3445
238-2804	Yellow/Navy XL	3445
238-2796	Yellow/Navy 2XL	3445
238-2797	Yellow/Navy 3XL	3445

### FLAMEARC HRC2 Tape CargoPANTS Navy 112R

- Cargo style pants, 2  
front sides pockets,  
2 large side flap  
cargo pockets & 2  
back flap pocket



238-2854	Navy 112R	3474
238-2860	Navy 72R	3474
238-2861	Navy 77R	3474
238-2862	Navy 82R	3474
238-2863	Navy 87R	3474
238-2865	Navy 92R	3474
238-2867	Navy 97R	3474

### 3314 CD Trousers with 3M R/Tape

- 311gsm heavyweight cotton drill with 3M  
reflective tape. It has heavy duty nylon zip
- Environmentally  
friendly and safe to  
wear against skin



238-2734	Navy 102R	3314
238-2745	Navy 72R	3314
238-2747	Navy 77R	3314
238-2749	Navy 82R	3314
238-2751	Navy 87R	3314
238-2754	Navy 92R	3314
238-2757	Navy 97R	3314

### 3475 Ladies FlameArc HRC2 cargo pants

- Flame resistant



238-2878	Navy 8	3475
238-2877	Navy 6	3475
238-2876	Navy 24	3475
238-2875	Navy 22	3475
238-2874	Navy 20	3475
238-2873	Navy 18	3475
238-2872	Navy 16	3475
238-2871	Navy 14	3475
238-2870	Navy 12	3475
238-2869	Navy 10	3475



# SAFETY BOOTS

When only the toughest will do.  
These boots are built for extreme conditions.

A pair of work boots is useless if they're not safe and comfortable. Often made for specific conditions, safety boots are all about hardcore features that are built around keeping feet secure while still offering a range of comfort features. All Blundstone safety footwear featured is compliant to Australian standard AS 2210.3:2019 and ASTM F2413.

## COMFORT WITH EVERY STEP

All Blundstone boots are engineered to provide you with a comfortable experience, ready to face a long day on the job. Our different boots feature different comfort and safety systems, ensuring there is a boot suitable for everyone.

### ZIP UP SERIES

The convenience of a zip but with the personal fit of laces too. Great for workers who get their boots on and off all day.

### LACE UP SERIES

Our lace up series offers a range of styles, all with outstanding comfort and safety features.

### ELASTIC SIDE SERIES

Pull on, kick off, laceless convenience. Total foot safety and Blundstone comfort.

### WOMEN'S SAFETY SERIES

A natural fit for hard work. Designed and made for women, offering optimum fit, support and comfort along with a range of safety features.

### JOGGER SERIES

Blundstone Safety Joggers have a rubber outsole and an EVA midsole which provides cushioning and shock protection. They're a lightweight option for those requiring a safety toe cap.

### GUMBOOT SERIES

If you work in mining, the food industry or any job where you get your feet wet, you already know how valuable a good pair of gumboots are.



Refer to [blundstone.com.au](https://www.blundstone.com.au) for further details of the 30 day comfort guarantee and the manufacturers warranty.

Shop online now at  
[au.rs-online.com/blundstone](https://au.rs-online.com/blundstone)

## ZIP UP SERIES



## LACE UP SERIES



## ELASTIC SIDE SERIES



## WOMEN'S SAFETY SERIES



## GUMBOOT SERIES



## EVERY STEP BETTER

Product. People. Planet.

The Blundstone Every Step Better program encapsulates our ongoing commitment to three key pillars:  
**Product. People. Planet.**

Our mission is to make every step we take better than our last.

**Our products** – made to last

**Our people** – every individual matters.

**Our planet** – to proactively manage and reduce our impact today and for future generations.



Gate Valve Lockouts

- Made of rugged injection-molded polypropylene
- Includes a unique knock-out center that accommodates OS&Y or "rising stem" valves
- These gate valves come are available in 5 sizes, to effectively cover valve hand wheels of 1" to 13" (25 to 330mm) in diameter



237-0520	254mm Attachment, Red	065563
237-0521	330.2mm Attachment, Red	065564
237-0522	254mm Attachment, Yellow	065593
237-0523	330.2mm Attachment, Yellow	065594
237-0524	165.1mm Attachment, Green	065597
237-0526	254mm Attachment, Green	065598
237-0527	330.2mm Attachment, Green	065599
237-0528	25.4mm Attachment Point, Red	065666
237-0559	330.2mm Attachment Point, Kit	196212

Double looped cable lockout

- Ideal for locking out large valves in many different industries
- Many customers use large, heavy chains to lock out valves
- This cable is much more lightweight and are better visual deterrent that the isolation point is locked



237-0538	0.61 M	131063
237-0539	1.22 M	131064
237-0540	1.83 M	131065
237-0541	2.44 M	131066

Cylinder Tank Lockout

- Revolutionary rugged polystyrene plastic device is used to lockout cylinder tanks, including propane tanks on fork trucks and standalone propane tanks.
- Special design allows device to be used in tight spaces
- Valve stem hole is 1.25" in diameter



237-0516	1.25" in diameter	46139
----------	-------------------	-------

Steel Lockout Hasp With Tab

- Steel Lockout Hasps from Brady® have tamperproof interlocking tabs to prevent unauthorized opening.
- Bright red vinyl insulation
- 6 padlocks can be attached
- Maximum 9.53 mm shackle diameter



237-0534	4.372 H x 1.575 W	105718
237-0535	4.97 H x 1.575 W	105719

BatteryBlock Forklift Power Connector Lockout

- Keep forklift and lift vehicles locked out and locked down. Non-conductive pins ensure the device stays tightly in place during off-shift periods or maintenance projects
- Single-piece design don't need to keep track of extra pieces
- Non-conductive pins ensures the device stays secure during maintenance projects and off-shift periods



237-0557	2.62 H x 5.28 W	150841
----------	-----------------	--------

Transparent push button lockout device

- Prevent the unauthorised use of push button emergency devices
- Suitable for 16 mm push button diameters
- Made of rugged polycarbonate
- -20° C to 80°C operating temperature



237-0542	2370542	139793
----------	---------	--------

Miniature circuit breaker lockouts

- Safe and effective method for locking out miniature circuit breakers
- Easy installation with no tools required
- Low profile design allows panel door closure
- Available for single and multi-pole breakers
- Attach a Brady safety padlock to complete lockout



237-0544	Pack of 1	149514
237-0545	Pack of 6	149515

Pull Handle Butterfly Valve Lockout

- Exclusive, anti-pivot lockout device fits the full range of pull handle valve sizes, from ½ in. to 8 in. diameter
- A convenient, one-piece design that stays together whether in use or in storage
- Holds up to four worker padlocks



237-0558	0.5 - 8 in	170220
----------	------------	--------

Emergency Eyewash Kit

- Eyewash station provides a specialized first aid unit for eye injuries
- Tough plastic translucent case
- Dust-resistant & keeps products clean



447-721	Eyewash Kit	856592
---------	-------------	--------

Combined Lock Storage and Group Lockout Box

- A handy box which features a lockable storage compartment and a group lockout compartment. Accommodates 17 padlocks, and storage compartment can hold approximately 50 padlocks



237-0532	2370532	105716
237-0533	2370533	105717

Original Cable Lockout

- The Original Cable Lockout from Brady® is an easy-to-use multi-purpose energy isolation solution, ideal for unusual devices that can't be locked out using traditional devices
- The Original Cable Lockout Device from Brady® is constructed of impact modified nylon



237-0511	Blue	45191
237-0512	Yellow	45192
237-0518	Red	65318

Eyewash Station

- 10 units x 15ml sterile eyewash with disposable eye baths



447-755	10 units x 15ml	856757
---------	-----------------	--------

Prinzing Gas Cylinder Lockout

- Adjustable and installs in just seconds. Device is manufactured to accommodate neck rings up to 88 mm in diameter
- Polypropylene body
- dimensions
- Red in colour
- -20 °C to 80 °C service temperature



237-0513	158.80mm (H) x 88.14mm (D)	45629
----------	----------------------------	-------

SteelGroup Lock Box

- With a group lockout box, each employee retains exclusive control (as required by OSHA) by placing his own lock on the lockout box, which holds the keys to the job locks
- As long as any one worker's lock remains on the lockout box, the keys to the job locks contained inside cannot be accessed
- Padlocks sold separately



237-0515	Max 10 padlocks	46134
----------	-----------------	-------

Softpack First Aid Kit

- Simple design and a practical layout in a compact size
- Handy soft canvas case with zip
- Available in a choice of 3 colours



447-737	Carrying Case	848794
---------	---------------	--------

3-in-1 Electrical Plug Lockout

- Accommodates high and low voltage plugs up to 76 mm in diameter and 139 mm in length. 2 sliding top lids can be used individually or together to accommodate small, medium and large-diameter cords up to 31 mm
- Made in bright yellow thermoplastic
- With English instruction labels
- 158.75 mm (H) x 88.14 mm (Diameter) dimensions



237-0514	158.75mm (H) x 88.14mm (D)	45842
----------	----------------------------	-------

Butterfly valve lockout device

- Can be used to lock a butterfly valve in the OFF position by clamping down on the handle so that it may not be engaged or moved.
- Impact modified nylon 6/6
- Brass rivets
- Stainless steel threaded rod, nut, and plate



237-0536	Small	121504
237-0537	Large	121505



# HAZARDOUS SOLUTIONS

Discover our wide range of products built to withstand the hazardous environments with chemicals and underground.

RS PRO

bulgin

RITIAL

Telemecanique  
Sensorspro-val  
by RCR

CRC

Rubbermaid  
Commercial Products

Browse and shop thousands more brands and products online at [au.rs-online.com](http://au.rs-online.com)

## ADAPT™ Range Octane Zip Safety Boots

- The combination of electrical HAZARD certification and the performance features of the ADAPT™ Range makes the Octane Zip ideal for electricians and construction workers that work on uneven surfaces and can be exposed to electric currents
- ZIP closure provides easy access and a quick exit in emergencies

MACK



241-8311	Honey, 4	MKOCTANEZHFF040
241-8312	Honey, 5	MKOCTANEZHFF050
241-8313	Honey, 6	MKOCTANEZHFF060
241-8314	Honey, 6.5	MKOCTANEZHFF065
241-8315	Honey, 7	MKOCTANEZHFF070
241-8316	Honey, 7.5	MKOCTANEZHFF075
241-8317	Honey, 8	MKOCTANEZHFF080
241-8319	Honey, 8.5	MKOCTANEZHFF085
241-8320	Honey, 9	MKOCTANEZHFF090
241-8321	Honey, 9.5	MKOCTANEZHFF095
241-8322	Honey, 10	MKOCTANEZHFF100
241-8323	Honey, 10.5	MKOCTANEZHFF105
241-8324	Honey, 11	MKOCTANEZHFF110
241-8325	Honey, 12	MKOCTANEZHFF120
241-8326	Honey, 13	MKOCTANEZHFF130
241-8327	Honey, 14	MKOCTANEZHFF140

## MP5 hazard guard coverall

- Designed for protection against hazardous substances and contamination of both product and personnel
- Made from a breathable microporous fabric with stitched seams for extra strength

pro-val  
by RCR

235-2983	M (Box of 25)	51308
235-2984	L (Box of 25)	51309
235-2985	XL (Box of 25)	51310
235-2986	XXL (Box of 25)	51311
235-2988	XXXL (Box of 25)	51312

## Over The Spill Station Kit

- Station kit mounts to any flat surface
- Durable construction
- Includes 25 absorbent pads
- Highly visible – Yellow colour
- Black warning message reads – Caution Wet Floor
- Durable construction
- Refillable dispenser

Rubbermaid  
Commercial Products

123-6012	Padsx25, Plastic Dispenser	FG425100YEL
----------	----------------------------	-------------

## MP4 hazard guard coverall

- Certified for protection against biological hazards and infective agents
- Made from breathable microporous fabric, with stitched and taped seams creating a waterproof seal

pro-val  
by RCR

235-3000	M (Box of 25)	51631
235-3001	L (Box of 25)	51632
235-3002	XL (Box of 25)	51633
235-3004	XXL (Box of 25)	51634
235-3005	XXXL (Box of 25)	51635

## TROJAN PVC Gloves

- Made out of premium polyvinyl chloride (PVC)
- Extremely flexible with seamless cotton liner
- Resistance against many acids, oils and chemicals
- Double dipped, plus triple layered between thumb and forefinger
- Rough grip palm, wet and dry grip and reusable
- Protection against abrasions and light cuts

pro-val  
by RCR

235-2955	9 (Bag of 12 Pairs)	41560
235-2956	10 (Bag of 12 Pairs)	41561
235-2957	Size 11 (Bag of 12 Pairs)	41562

[au.rs-online.com/mining-utilities](http://au.rs-online.com/mining-utilities)

## Illuminated Push button

- Vandal resistant stainless steel switch body & button
- Dot or ring illumination
- Single pole, push to make
- Bright Daylight LEDs
- Separate LED terminals
- 750,000 mechanical operations minimum



bulgin

708-3052	Red/Green 19.2mm	MPI002/28/D1
708-3046	Green	MPI002/28/GN
708-3059	Blue/Green	MPI002/28/D5
708-3068	Amber	MPI002/TERM/AM

## Preventa ATEX D

- Metallic guard switches that can be used in potentially explosive DUSTY environments for safety applications
- Zones 21-22
- Protection mode tD
- Suitable for Category 4/ PLe circuits (EN ISO 13849-1)

IP RATED  
IP67Telemecanique  
Sensors

666-4938	2NO/1NC	XCSA502EX
666-4947	2NC/1NO	XCSA702EX
666-4956	2NC/1NO	XCSC702EX

## NF Contact Cleaner

- A revolutionary, technically proven, stable, no flash point, and non-flammable, inert high purity cleaning solvent
- Non-conductive, non-corrosive and non-staining
- It has rapid- complete evaporation and contains no lubricants



CRC

238-7738	400 g	2017
----------	-------	------

## Ex enclosures KEL

- 304 Stainless Steel with screw-fastened cover
- IECEx Hazardous Area Certification

CERTIFIED  
IECEx  
IP RATED  
IP66

168-008	80x150x150mm	9301000
167-831	120x200x400mm	9305000
167-847	120x300x300mm	9306000

## Hazardous Waste Disposal Disposal Bag

- Perfect for quick and easy removal of absorbents used to clean up spills, drips and leaks in a wide variety of applications
- Manufactured from high tensile strength Tri-Ex blend material for optimum strength and durability, while offering tough resistance to punctures



RS PRO

771-6566	460x900x20 mm, Box of 5
----------	-------------------------

## INGRESS PROTECTION (IP) RATINGS

IP ratings are represented by combining the digits of the columns below.

1st= Degree of protection against solid objects

No Protection	0
Protected against solid objects greater than 50mm.	1
Protected against solid objects greater than 12.5mm.	2
Protected against solid objects greater than 2.5mm.	3
Protected against solid objects greater than 1.0mm.	4
Protected against dust that could cause sufficient harm.	5
Protected against all dust.	6

2nd = Degree of protection against water

0	No Protection
1	Protected against drops of water.
2	Protected against drops of water at a 15 degree angle.
3	Protected against solid objects greater than 2.5mm.
4	Protected against water spray splashing from any angle.
5	Protected against water jets from any angle.
6	Protected against powerful jets of water or heavy seas.
7	Protected against temporary immersion in water (30 minutes at 1M).
8	Protected against the effects of permanent immersion in water (up to 5M).
9K	Protected against close-range high pressure, high temperature spray downs (80 degC water at 80-100bar for 30sec x 4 angles).

Example:

IP

4

4

Protected against solid objects greater than 1.0mm.

Protected against water spray splashing from any angle.

## 400 Series Buccaneer

- With a lightweight and rugged construction, these sealed circular plastic connectors offer highly reliable power or signal connections for use within medical, industrial, infrastructure and automotive applications where space is limited

IP RATED  
IP68

bulgin

426-0981	8 Way Cable Socket, 5A	PX0410/08S/6065
426-0931	8 Way Cable Plug, 5A	PX0410/08P/6065



# HARSH ENVIRONMENTS

Rugged environments and extreme conditions require quality products and a reliable distribution service.



RS PRO



Life Is On



Schneider Electric



Ansell

Browse and shop thousands more brands and products online at [au.rs-online.com](http://au.rs-online.com)

## Zinc Range

- High-quality range of zinc aerosol products including Zinc It, Bright Zinc and "Black" coloured zinc products
- CRC Zinc products can be used on structural steel, roofs, welding seams, storage tank transformers, power generation equipment and much more



<b>238-7749</b>	Grey, 400ml	2085
<b>238-7750</b>	Silver, 400ml	2087
<b>238-7751</b>	Black, 400ml	2089
<b>238-7752</b>	White, 400ml	2090

## BRUTE container

- Features innovative solutions for making refuse collection and storage more efficient
- Innovative venting channels make lifting out liners up to 50% easier, improving productivity and reducing the risk of injury
- Integrated cinches secure the liner, allowing for efficient knot free liner changes. Tested to 20,000 cycles
- Proprietary design constructed with the highest quality material plus a UV inhibitor ensures long life in even the most extreme commercial environments
- Guaranteed to never fade, warp, crack, or crush
- Rounded handles make lifting and moving easier, and are reinforced to resist tearing or damage from even the heaviest loads



<b>230-8231</b>	121.1L	FG263200GRAY
<b>146-2786</b>	167L	FG264360GRAY



## Heavy Duty Adaptable Utility Cart

- Makes transporting long objects in tight spaces easier and faster
- Extended base attaches to RCPs Medium Heavy Duty Adaptable Carts to carry tall objects like ladders or 4' light bulbs
- Frees up valuable space on cart shelves.
- Makes transporting long objects in tight spaces easier and faster
- 40 lb weight capacity



<b>241-1804</b>	FG452088BLA
-----------------	-------------



## Water Resistant Elasticised Pallet Cover

- Made from cast polyethylene CPE film
- Square sheet with elastic around perimeter
- Soft and lightweight, thickness of 0.025mm



<b>235-3029</b>	1.4m x 1.4m	57002
-----------------	-------------	-------



## HYFLEX® 11-561

- The thin coating uses FORTIX technology which provides not only extra durability but also a fit that is more comfortable and breathable
- The best choice when high cut and dexterity in dry to light oil conditions are needed
- High cut protection (ISO C/ANSI A3) and tear resistance

## Ansell

<b>234-8222</b>	Size 5	11561050	<b>234-8225</b>	Size 8	11561080			
<b>234-8223</b>	Size 6	11561060	<b>234-8226</b>	Size 9	11561090	<b>234-8228</b>	Size 11	11561110
<b>234-8224</b>	Size 7	11561070	<b>234-8227</b>	Size 10	11561100	<b>234-8229</b>	Size 12	11561120



## 3 x-flow Unisex Toe Capped Safety Shoes

- The full leather upper and heat resistant sole makes uvex 3 x-flow ideal for workers in heavy application areas that may be exposed to hot material
- Electrical insulating sole and metal free design make it well suited to workers in construction and other industries that could have accidental contact with electricity
- Extra wide sizes also available online



<b>237-4473</b>	Black, UK 6.5	6541840	<b>237-4473</b>	Black, UK 6.5	6541840
<b>237-4474</b>	Black, UK 7	6541841	<b>237-4475</b>	Black, UK 8	6541842
<b>237-4461</b>	Black, UK 9	6540843	<b>237-4477</b>	Black, UK 9	6541843
<b>237-4453</b>	Black, UK 4	6540837	<b>237-4478</b>	Black, UK 10	6541844
<b>237-4455</b>	Black, UK 5	6540838	<b>237-4479</b>	Black, UK 10.5	6541845
<b>237-4456</b>	Black, UK 6	6540839	<b>237-4480</b>	Black, UK 11	6541846
<b>237-4457</b>	Black, UK 6.5	6540840	<b>237-4481</b>	Black, UK 12	6541847
<b>237-4458</b>	Black, UK 7	6540841	<b>237-4482</b>	Black, UK 13	6541848
<b>237-4459</b>	Black, UK 8	6540842			

## ADAPT™ Range TerraPro Zip Safety Boots

- erraPro Zip is ideal for workers that might need a quick exit due to sparks and water hazards or just want the ease of access with additional boot height
- Built on the ADAPT™ sole technology and articulatedFIT upper the TerraPro Zip is designed to improve adaption to rough surfaces and is combined with a lightweight design to assist in minimising fatigue and maximising performance



<b>241-8345</b>	Honey, 4	MKTERRPRZHFF040	<b>241-8330</b>	Black, 6	MKTERRPRZBBF060
<b>241-8346</b>	Honey, 5	MKTERRPRZHFF050	<b>241-8331</b>	Black, 6.5	MKTERRPRZBBF065
<b>241-8347</b>	Honey, 6	MKTERRPRZHFF060	<b>241-8332</b>	Black, 7	MKTERRPRZBBF070
<b>241-8348</b>	Honey, 6.5	MKTERRPRZHFF065	<b>241-8333</b>	Black, 7.5	MKTERRPRZBBF075
<b>241-8349</b>	Honey, 7	MKTERRPRZHFF070	<b>241-8334</b>	Black, 8	MKTERRPRZBBF080
<b>241-8350</b>	Honey, 7.5	MKTERRPRZHFF075	<b>241-8335</b>	Black, 8.5	MKTERRPRZBBF085
<b>241-8351</b>	Honey, 8	MKTERRPRZHFF080	<b>241-8336</b>	Black, 9	MKTERRPRZBBF090
<b>241-8352</b>	Honey, 8.5	MKTERRPRZHFF085	<b>241-8337</b>	Black, 9.5	MKTERRPRZBBF095
<b>241-8353</b>	Honey, 9	MKTERRPRZHFF090	<b>241-8338</b>	Black, 10	MKTERRPRZBBF100
<b>241-8354</b>	Honey, 9.5	MKTERRPRZHFF095	<b>241-8339</b>	Black, 10.5	MKTERRPRZBBF105
<b>241-8355</b>	Honey, 10	MKTERRPRZHFF100	<b>241-8340</b>	Black, 11	MKTERRPRZBBF110
<b>241-8356</b>	Honey, 10.5	MKTERRPRZHFF105	<b>241-8341</b>	Black, 12	MKTERRPRZBBF120
<b>241-8357</b>	Honey, 11	MKTERRPRZHFF110	<b>241-8342</b>	Black, 13	MKTERRPRZBBF130
<b>241-8358</b>	Honey, 12	MKTERRPRZHFF120	<b>241-8343</b>	Black, 14	MKTERRPRZBBF140
<b>241-8359</b>	Honey, 13	MKTERRPRZHFF130	<b>241-8344</b>	Black, 15	MKTERRPRZBBF150
<b>241-8360</b>	Honey, 14	MKTERRPRZHFF140			
<b>241-8361</b>	Honey, 15	MKTERRPRZHFF150			



## Blue Hazguard SMS Triple Layer Coveralls

- Barrier to airborne particulate materials and dust
- Barrier to limited splash and liquid spray



<b>235-2989</b>	M	51521
<b>235-2990</b>	L	51522
<b>235-2991</b>	XL	51523
<b>235-2992</b>	XXL	51524
<b>235-2994</b>	XXXL	51525

## Blundstone 992

- Loaded with safety and comfort features - and the inclusion of XRD® Technology means it is the ultimate in workboot comfort
- Wheat water resistant nubuck, 150mm height, safety boot



<b>2043553</b>	AU Size 5	992050
<b>2043555</b>	AU Size 6	992060
<b>2043556</b>	AU Size 7	992070
<b>2043557</b>	AU Size 7.5	992075
<b>2043558</b>	AU Size 8	992080
<b>2043559</b>	AU Size 8.5	992085
<b>2043561</b>	AU Size 9	992090
<b>2043562</b>	AU Size 9.5	992095
<b>2043547</b>	AU Size 10	992100
<b>2043549</b>	AU Size 10.5	992105
<b>2043550</b>	AU Size 11	992110
<b>2043551</b>	AU Size 12	992120
<b>2043552</b>	AU Size 13	992130
<b>2043563</b>	AU Size 14	992140





wilcoROWCO™ Metal Clad Industrial Switchgear

- Heavy Duty Cast Aluminium
- External and accessible mounting facilities
- Stainless Steel (316 grade) cover mounting screws



IP RATED  
IP66

215-0525	Switch, 1 Pole, 20A, 240V	WMS120
231-3529	Switch, 1 Pole, 20A, 240V, Less Enclosure	WMS120/LE
231-3531	Switch, 1 Pole, 2 Way, 20A, 250V	WMS120-TW
231-3530	Switch, 1 Pole, 20A, 240V	WMS120CO
213-8452	Switched Socket Outlet, 1 Gang, 63A, 500V, 5 Round Sockets, Series A	WMC63

Harmony XALK Emergency stop

- Easy to use "turn to release" functionality for easy reset once activated.
- Light grey RAL 7035 base enclosure, with a yellow RAL 1021 cover colour and a prominent, bold red push button for easy identification to its function.
- Durable Polycarbonate material, easy to clean and maintain with added durability for extended use (mechanical durability of 300,000 cycles).



795-1295	XALK178
795-1299	XALK1781

(SPST) Momentary Blue LED Push Button Switch

- Provides a highly customisable vandal-proof product with premium look & feel
- Vandal-proof design with rear mounting jam nut
- Various pushbutton symbols including plain, ring & power logo



123-6070	Blue	AV1910R724Q04
123-6077	White	AV1921P124Q04
123-6097	Red	AV1910R312Q04
123-6107	Green	AV1921P612Q04

Jokab Interlock Switch

- Reduce downtime
- No wear
- No mechanical breakage
- Easy to install
- Local reset function
- Operating temperature ranges between -40°C and +70°C
- Suitable in harsh environments



ABB

176-0019 ADAM DYN-INFO M12-5 CONTACT

Snap-Action Limit Switch

- Voltage rating of 600V AC for use in high-power systems
- Compact dimensions of 106.78 (length) x 41.1 (width) x 61.9mm (depth) for use in areas with limited space



Honeywell

691-7257 600V AC LSA1A

OsiSense ATEX D Limit switches

- Positive opening snap action contacts
- Ideal for explosive dust atmospheres applications
- Spring return roller plunger steel operator



IP RATED  
IP67

Telemecanique  
Sensors

221-2905	Roller	XCMD4102L5EX
221-2906	Plunger	XCMD4110L5EX"
221-2907	Roller	XCMD4115L5EX

Bulgin Miniature Push Button Switches

- Momentary action switches with slow make-and-break contacts.
- Single hole fixing to clear 7.4mm.
- Solder terminals



arcoelectric

320629	SPNO	T0916SOAAE
320641	SPNC	T0918SOAAE

(SPDT) Momentary Blue LED Push Button Switch

- Silver, round, flat actuator
- Natural case colour
- Contact voltage rating of 250 V AC
- Single Pole Double Throw (SPDT) contact configuration
- Contact current rating of 5 A
- Copper contact material



RS PRO

111-3783 Panel Mount, 250V ac

au.rs-online.com/mining-utilities

OsiSense XS ATEX D Inductive proximity sensors

- Detection of metal objects up to 60mm
- High performance technology
- Comprise a sensing face winding oscillator
- High corrosion and impact resistant nickel plating



IP RATED  
IP67

Telemecanique  
Sensors

221-1744	6...150c/mn	XSAV11373EX
221-1748	120...3000c/mn	XSAV12373EX
221-2982	Sn4mm	XS612B1PAL10EX
221-1698	Sn15mm	XS630B1PAL10EX

Ultrasonic Proximity Sensors

- High-performing HMI display used to monitor machines, perform tasks and visualise operational status
- This HMI offers a 7-inch control panel screen, can be used as a stand-alone device, offer multi-communication ports, a fluent touch-screen, and excellent communication stability



RS PRO

237-0799	0 □ 300 mm Detection
166-9497	0 □ 300 mm Detection, Box of 540

OsiSense ATEX D Electromechanical pressure sensor

- Operating in any position
- Diaphragm actuator for operating from any position
- Snap action silver contacts
- External setting



IP RATED  
IP66

Telemecanique  
Sensors

221-0089	10bar, 1 C/O	XMLB010A2S12EX
----------	--------------	----------------

M1500LF Relative Humidity Transducers

- Constructed from a patented solid polymer structure and provide reliable and accurate measurements,
- Full interchangeability
- Compact size
- Very low temperature dependence
- Not affected by water immersion
- Suitable for 3 to 10 V dc supply voltage



TE  
HONEYWELL  
AUTHORIZED DISTRIBUTOR

893-7247	HM1500LF	HPP805A031
----------	----------	------------

Magnetic Pickup Sensor

- An 'active' version of the standard type (Stock no. 304-166) but incorporating an IC to provide a digital output compatible with most logic systems
- Requires a peripheral speed greater than 250mm per second to operate



RS PRO

304-172	5 □ 15 V dc
---------	-------------

Inductive Proximity Sensor

- 40 x 40mm "limit switch" style PBT housing and sensing face
- Adjustable sensing head, 9 positions
- Fixed terminal base for quick sensor replacement
- Connection via terminal compartment
- Yellow LED output status display

IP RATED  
IP68



385-1205	Block, 40 mm Detection	NI40U-CP40-FDZ30X2
----------	------------------------	--------------------

Lifting and boosting station

1 XMLA or XMX Pressure Sensor

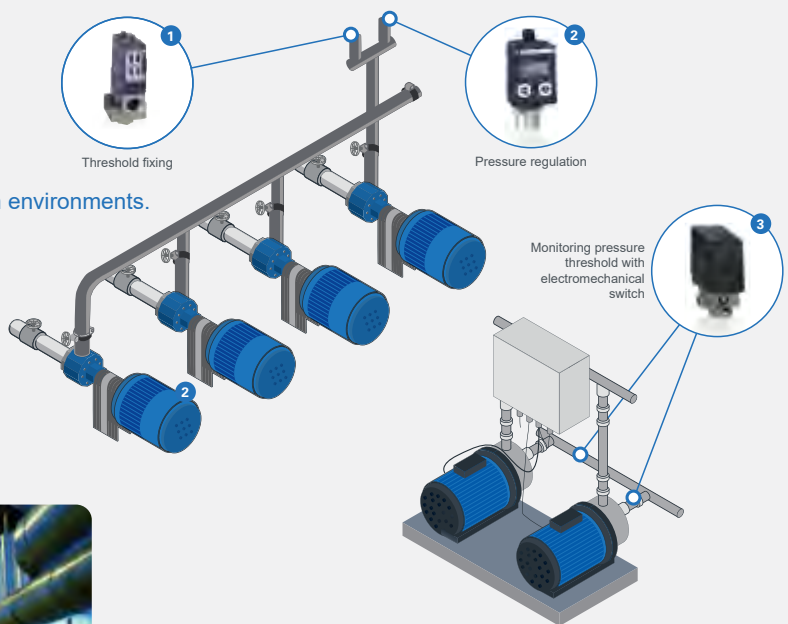
Simple regulation between two thresholds; XMLA designed for harsh environments.

2 XMLR Pressure Switch

Easy, two-button configuration.

3 XMP Pressure Sensor

Direct power switching up to 3 kw.



Telemecanique  
Sensors





CP2E Compact PLCs

- A Micro PLC for compact equipment where Price/Performance ratio is a key, while supporting data collection and Machine-2-Machine communication



196-3743	8 in, 6 out relay	CP2E-E14DR-A
196-3745	12 in , 8 out relay	CP2E-E20DR-A

Altistart 48 Series

- High performance soft start/ soft stop for your heavy duty machines and pumps with the unique Torque Control System (TCS) for controlled starting and deceleration



608-7053	7.5 kW	ATS48D17Q
608-6993	55 kW	ATS48C11Q"
6087003	75 kW	ATS48C14Q

M262 Logic Controller

- The M262 Logic/Motion Controller is a control system that offers an all-in-one solution for motion applications and a scalable solution for logic applications, with optimised configurations and an open, expandable architecture
- 7 remote and 7 local I/O expansion modules



201-1450	4 Inputs, 4 Outputs, Transistor	TM262L10MESE8T
----------	---------------------------------	----------------

Harmony ST6 Basic HMI panels

- Display of text messages, graphic objects, and synoptic views Control and configuration of data
- Touch screen, single touch analogue resistive
- EcoStruxure Operator Terminal Expert software
- ARM Cortex-A8 processor
- Colour TFT LCD display, 16 million colours
- Backlight life span 50000 hours with white
- 16 Levels of brightness



200-7235	7-inch Screen	HMIST6400
200-7234	4.3-inch Screen	HMIST6200
200-7236	10.1-inch Screen	HMIST6500
200-7237	12.1-inch Screen	HMIST6600
200-7238	15.6-inch Screen	HMIST6700

FLEXIS Flexi Soft

- The Flexi Soft safety controller can be programmed via software
- Thanks to the modular hardware platform, Flexi Soft provides a tailored and efficient solution for a whole host of safety applications
- A wide range of modules are available: main modules, gateways, digital and analog input/output modules, Motion Control modules, as well as relay modules
- The license-free Flexi Soft Designer configuration software enables intuitive programming, rapid commissioning, and continuous diagnostics down to the automation level



213-3782	Analog input module	FX3-ANA020002
213-3781	Gateway	FX0-GENT00000

Modicon M580 automation platform

- The Modicon M580 ePAC (Programmable Automation Controllers) feature openness, flexibility, robustness and sustainability
- The M580 are designed with an Ethernet backbone to optimize connectivity and communications
- They support X80 common I/O modules which can be easily integrated into its architecture
- The powerful processors offer high levels of computation for complex networked communication, display and control applications



820-8502	Modicon X80 EIO drop adapter for Ethernet + X-bus racks	BMECRA31210
230-6718	Modicon M580, Ethernet 3 port Factory Cast Ethernet	BMENOC0311
230-6746	Modicon X80 Ethernet RIO drop optical repeaters multimode	BMXNRP0200



Alpha Wire 300 V PVC Hook Up Wire

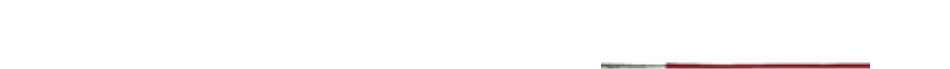
- Stranded or solid tinned copper conductors protecting the wires from corrosion and increasing efficiency in hot and humid environments
- Colour-coded insulation for easy circuit identification
- Easy to handle, strip and terminate
- PVC insulation
- Available in lengths of 100 ft (30.5 m) and 1000 ft (305 m)



168-1571	Red	3051 RD
176-9788	White	3050 WH
168-1593	22 AWG Blue 30m	3051 BL
176-9794	24 AWG Black 30m	3050 BK
176-9817	24 AWG Green 30m	3050 GR

ÖLFLEX HEAT Series High Temperature Wire

- Temperature Resistance
- Cold Resistance
- Resistance to some oils and chemical substances
- Halogen-free according to IEC 60754-1
- Corrosiveness of combustion gases according to IEC 60754-2



724-4531	1.0mm Red -50 to 180 D	50104
724-4547	1.5mm Grn/Yell -50 to 180	51000
724-4550	1.5mm Blue -50 to 180 D	51002
724-4553	1.5mm Brown -50 to 180 D	51003
724-4557	1.5mm Yellow -50 to 180 D	51005
724-4569	1.5mm White -50 to 180 D	51105

Type 44® wire

- Dual wall construction
- Small size, lightweight
- Low smoke and corrosive gas generation
- Resistant to most chemicals & electrical arc tracking
- Highly flame retardant
- 600 V Voltage Rating



789-3672	1.23 mm², 16 AWG	44A0111-16-0
789-3676	1.3 mm², 16 AWG,	44A0111-16-2

Universal Crimp Tool for Deutsch Connectors

- From Deutsch, this universal hand crimp tool has an eight-indent crimp designed to be used with solid contacts sizes 12, 16 and 20
- Used with both pin and socket contacts, the crimp tool features a simple screw adjustment for height/contact size, and a dial to select applicable wire sizes



425-973	HDT-48-00
---------	-----------

SOLARLOK PV4-S connector kit

- Provides waterproof protection
- Minimizes power loss by providing low contact resistance



190-2029	(Pack of 5)	2270025-1
----------	-------------	-----------

CGAT Adhesive lined 3:1 Heat Shrink Tubing

- High strength bonding
- Moisture proof
- Flame retarded jacket
- Environmental sealing



157-3818	12mm	CGAT-12/4-0
157-3824	18mm	CGAT-18/6-0
157-3903	24mm	CGAT-24/8-0



# Your smart choice for Mechanical Maintenance.

From bearings to solenoid valves, from seals to hoses, and with all types of fittings - pneumatic and hydraulic - RS PRO has what you need to maintain your production to high-quality standards, at the price you expect.

## Bearings and Seals

- Our recently extended choice of bearings and seals, in a wide and specialised variety of sizes and types



Visit [rspro.com](https://rspro.com) or scan the QR Code to view over 2,600 products in our Bearings & Seals range

## Pneumatics & Hydraulics

- Find the pneumatic parts and components you need, including fittings, seals and cylinder



Visit [rspro.com](https://rspro.com) or scan the QR Code to view over 2,200 products in our Pneumatics & Hydraulics range

## Pressure Gauges

- Prevent failures and costly downtime by avoiding under or over pressure with quality gauges from RS PRO



Visit [rspro.com](https://rspro.com) or scan the QR Code to view over 20 products in our Pressure Gauges range

## Belts & Pulleys

- Keep your processes and machinery in motion with the right belts and pulleys



Visit [rspro.com](https://rspro.com) or scan the QR Code to view over 700 products in our Belts & Pulleys range

## Air Hoses

- Rely on strong, flexible and highly pressure-resistant RS PRO air hoses



Visit [rspro.com](https://rspro.com) or scan the QR Code to view over 200 products in our Air Hoses range

## Structural Systems

- Build your own framework or a customised structural system with our extensive RS PRO offering



Visit [rspro.com](https://rspro.com) or scan the QR Code to view over 350 products in our Structural Systems range

## DS6281-EV 2/2 Solenoid Valve - Stainless Steel

- 2 way servo assisted solenoid valves suitable for use with neutral fluids such as compressed air and water
- N/C (Normally Closed) and N/O (Normally Open) versions available with NBR (Nitrile Rubber) or FKM (Fluoroelastomer) seals
- Usable for a variety of applications including heating and refrigeration, water treatment, compressed air and vacuum systems
- ATEX approved versions available



**bürkert**  
Fluid Control Systems

816-3253 2/2

221989

## Ball valve type 546 Pro PVC-U With solvent cement sockets inch BS

- Lockable lever as standard
- For easy installation and removal
- Ball seals PTFE
- Integrated stainless steel mounting inserts
- Z-dimension, valve end and union nut are compatible with type 546 (1stGeneration)
- Option:
- Interface-module with position feedback sensor, incl. LED feedback
- Manual spring return lever ("Dead man")
- Pneumatic or electric actuators from GF
- Individual configuration of the valve possible
- Multifunctional module with integrated limit switches



**+GF+**

192-0582 2 Way Ball Valve, 2in, 16bar

161546247

## Advanced Polyethylene (APE) Tubing

- 50% reticulated material
- Balance between flexibility and pressure/temperature resistance
- Resistant to a wide range of aggressive chemicals
- UV-stabilised: ideal for outdoor applications
- Approved for contact with foodstuff and beverages



**legris**

144-7831 Black 8x5,75 Drum 150m

1015Y08F01

144-7829 Black 6x4 Drum 150m

1015Y06F01

144-7828 Incolour 6x4 Drum 150m

1015Y06F00

## VUVG Solenoid Valves

- The innovative design allows the control valve to be set to internal or external pilot air supply for manifolds with sub base valves
- The connection technology is easy to change via the electrical connection box
- Pressure range -0.9 bar to 10 bar for maximised energy density and more power



**FESTO**

202-1343

VUVG-L18-M52-RT-G14-1P3

121-5890

VUVG-LK14-M52-AT-G18-1R8L-S

175-2143

VUVG-L14-M52-AT-G18-1P3

## Wafer Pattern Butterfly Valve

- Fitted with Pneumatic Actuator
- Wafer with Stainless Steel Disc - with Double Acting Actuator
- Body Cast Iron GG25 Polyurethane Coated
- Disc/shaft 316 Stainless Steel
- Liner EPDM / NITRIL



**RS PRO**

799-8800 3in

## PEN Series Polyethylene Tubing

- FESTO PEN series polyethylene tubing offers high level of abrasion resistance and its suitable for a wide range of tasks. Flexible thanks to highly resistant materials and it is easy to install Superior quality pneumatic fitting
- Resistant to most cleaning agents and lubricants
- Tubing characteristics - Suitable for energy chains in applications with high cycle rates



**FESTO**

126-3104 8mm x 50m, Blue PEN-8X1,25-BL

126-3103 6mm x 50m, Blue PEN-6X1-BL

126-2777 6mm x 50m, Black PEN-6X1-SW





# INDUSTRY 4.0 ADVANCED TECH

Prepare for the future of the mining & utilities industry with these advanced technologies.



Browse and shop thousands more brands and products online at [au.rs-online.com](http://au.rs-online.com)

## PSoC® 63 BLE 5 MCU for Predictive Maintenance

- Low-cost platform that will enable the design and debug of the PSoC 63 line
- It's designed to aid the development of the next generation of high-performance, high-security low-power Internet of Things applications



136-7817

PSoC

CY8CKIT-062-BLE

## Sick Flexi Loop

- Flexi Loop can connect up to 32 safety sensors in series in compliance with the highest performance level PL e
- Safety switches and safety sensors with OSSD outputs can be used together, regardless of manufacturer
- Detailed diagnostic information is also available for each sensor or switch



213-3778 Node For Safety Sensors

FLN-OSSD1100108

213-3771 Y-adapter, 24 V dc

FLA-YCON00001

213-3779 Module To Terminate Series Connection

FLT-TERM00001

## Lascar PanelPilot

- The PanelPilotACE SGD 70-A uses Lascar's PanelPilotACE Design Studio, a free drag-and-drop style software package that allows for rapid development of advanced user interfaces and panel meters
- 7" TFT display with 16.7M colours
- Capacitive touch screen
- Four 16-bit to ±40V d.c.
- 5 to 30V d.c. (1A typical at 5V d.c.) supply



124-4038

IoT2040

6ES7647-0AA00-1YA2

## Mini I/O Plug Kit

- Industrial Mini I/O plug connectors with a compact, space saving design and a latching wire to board I/O interface
- The Mini I/O plug connectors feature two points of contact on the contact interface for high electrical reliability in high vibration environments



703-9673

8 Way

2013595-1

# Your trusted partner for wind turbine and wind farm solutions

1

## Main power circuit

Efficiency starts with the main power circuit, where minimized energy losses translate into lower system costs and an improved energy harvest.



Acti9 iEM3200 Energy Meters  
RS Stock No.: 776-3014  
Mfr. Part No.: A9MEM3255

2

## Control of the turbine

Ensure an optimized operating environment with automated control of the turbine, reducing your maintenance costs and increasing safety.



Modicon M340 PLC CPU  
RS Stock No.: 681-8715  
Mfr. Part No.: BMXP342000

3

## Auxiliary circuits

Our expertise in automation and electrical distribution, combined with the wide breadth of our products, enables us to be the one-stop shop for your auxiliary circuits.



Magelis GTU - Touch Panel  
RS Stock No.: 842-8147  
Mfr. Part No.: HMIDT351

4

## MV collection

We offer an extremely compact, wind-specific MV collection solution that ensures better service continuity and guaranteed efficiency.

5

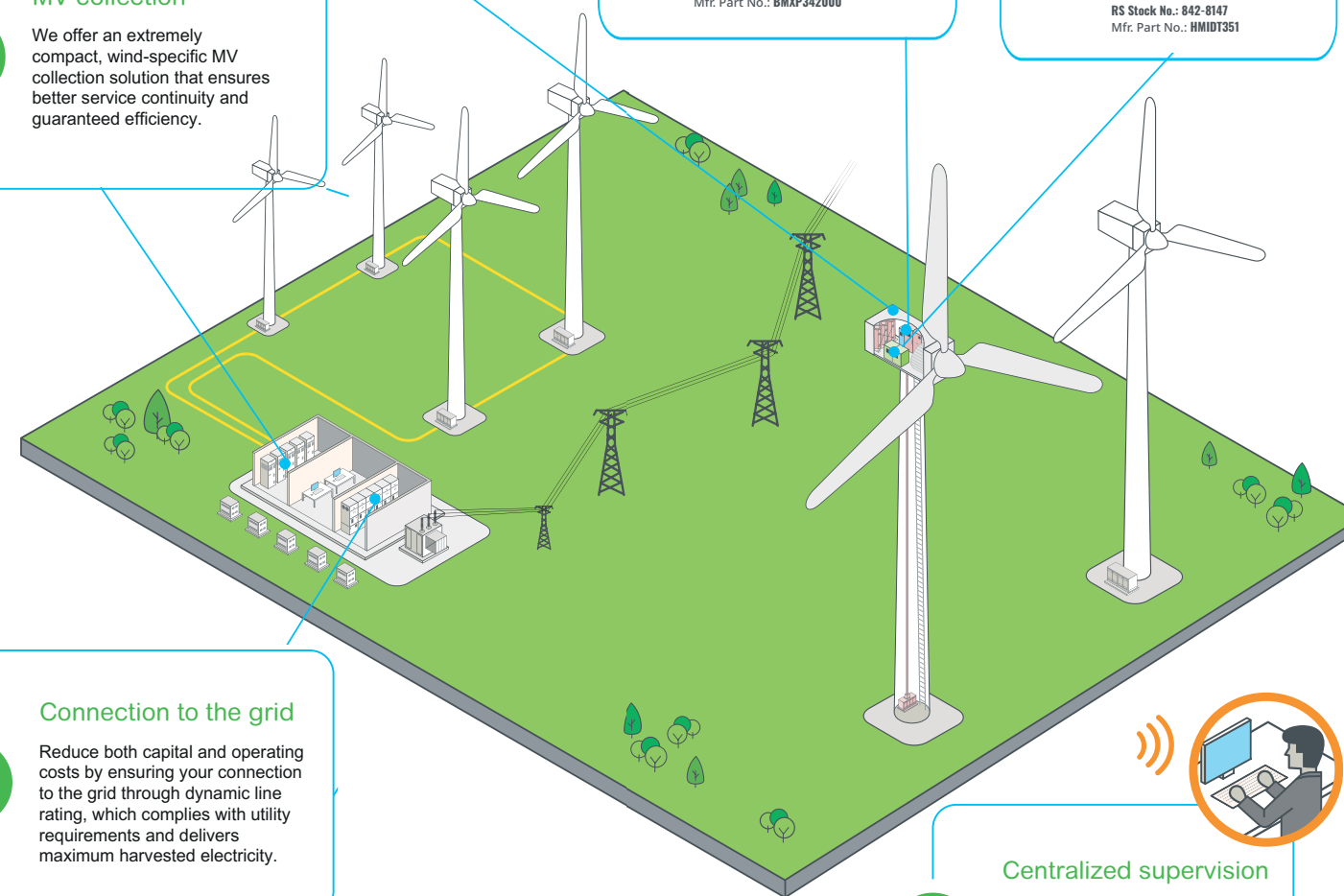
## Connection to the grid

Reduce both capital and operating costs by ensuring your connection to the grid through dynamic line rating, which complies with utility requirements and delivers maximum harvested electricity.

6

## Centralized supervision

Our open IoT architecture for IT/OT integration ensures real-time power monitoring and optimization of your turbine performance. Our supervision solution also provides information to the network operation to manage peak demand.



[schneider-electric.com](http://schneider-electric.com)

Life Is On



[au.rs-online.com/mining-utilities](http://au.rs-online.com/mining-utilities)



# Your smart choice for IoT Solutions

With over 8,400 IoT enabling & smart connectivity products, from IO-Link sensors, data cables and HMI displays to antennas and network testing equipment.

Embrace the IoT revolution for less with the help of RS PRO.



## M12 Splitter Boxes

- Nickel plated brass contacts
- MODBUS and Zigbee wireless models protected to IP55
- Wired and Terminal block models protected to IP65 / IP67
- PBT Plastic Housing
- Operating Temperature of 0 to 55 °C
- 24 V DC + 10% supply voltage



<b>877-1218</b>	5 way, 6 port
<b>877-1173</b>	5 way, 4 port
<b>877-1185</b>	5 way, 8 port

## Ethernet Switches

- Five RJ45 ports
- Width of 23 mm
- Operating temperature range of -40°C to +80°C
- Supply voltage range of 5 V to 30 V DC
- DIN rail mounting
- Gigabit series



<b>189-0537</b>	94 x 99mm
<b>189-0536</b>	95 x 99mm

## Ultrasonic Proximity Sensors

- High-performing HMI display used to monitor machines, perform tasks and visualise operational status
- This HMI offers a 7-inch control panel screen, can be used as a stand-alone device, offer multi-communication ports, a fluent touch-screen, and excellent communication stability



<b>237-0799</b>	0 □ 300 mm Detection
<b>166-9497</b>	0 □ 300 mm Detection, Box of 540

## Barcode Scanner

- Third generation image scanning technology offering accuracy and precision
- Ergonomic design to fit comfortably in the hand
- Can switch between automatic scanning or manual scanning via the trigger
- 360° scan angle ensuring quick and easy scanning



<b>206-7501</b>	2D Scanning
-----------------	-------------

## Temperature Data Logger

- Isolated Input Protection of 350 Vp-p between any two inputs
- Highly accurate thermometer with thermocouple K, J, E, T, R, S, N, L, U, B, C types
- 4 input functions for temperature display
- Programmable High / Low alarm for 4 inputs



<b>123-2235</b>	4 Input Channels
-----------------	------------------

## Fibre Optic Sensor

- Fibre-optic sensor
- PVC cable electrical connection
- Response Time <1 ms
- PVC cable electrical connection
- Length of 65 mm
- Minimum operating temperature of -10°C
- Maximum operating temperature of +55°C
- Housing material of ABS PC
- Red LED light source



<b>896-7305</b>	NPN-NO, PNP-NC Output
-----------------	-----------------------

## Touch-Screen HMI Displays

- High-performing HMI display used to monitor machines, perform tasks and visualise operational status
- This HMI offers a 7-inch control panel screen, can be used as a stand-alone device, offer multi-communication ports, a fluent touch-screen, and excellent communication stability



<b>215-6607</b>	7 in, 800 x 480pixels
<b>215-6606</b>	10.2 in, 1024 x 600pixels
<b>215-6604</b>	7 in, 800 x 480pixels
<b>215-6605</b>	7 in, 800 x 480pixels

## Absolute Wireless Pressure Transducer

- Pressure ranges from 0-50mbar to 0-1000mbar gauge
- Up to 750 m line-of-site range (depending on receiver)
- Piezoresistive thick film ceramic sensor with stainless steel body



<b>123-5249</b>	500mbar Max
-----------------	-------------

## Network Tester

- Can test multiple cables such as: UTP, STP, Cat5E, Cat6, Cat6A and Coaxial cables
- Included toner probe helps with testing
- Locate and identify the distance of an open or short circuit No power supply needed. Just a 9V battery. Low battery indicator included



<b>146-6833</b>	F, RJ12, RJ45, 2670
-----------------	---------------------

## Logic Controllers

- Computer programming interface
- Operates from -10°C to +55°C
- Commercial and industrial application
- ModBus network type
- Serial communication port
- Uses ladder programming language
- Programming capacity of 250 lines
- Screw termination
- One communication port



<b>917-6377</b>	Analogue, Digital
<b>917-6373</b>	Digital

## 3 Phase LED Energy Meter

- Offers true RMS measurement to ensure accurate and reliable readings with simultaneous sampling of Volts and Amps
- The meter is designed with a six-digit display with auto-scaling on each row for better readability and gives continuous and instantaneous readings



<b>179-7578</b>	90mm Cutout Height
-----------------	--------------------

## Male USB A to Female USB A USB Extension Cable

- USB type-A to USB type-A extension cable
- Male-to-female connectors
- Fully compatible with Windows operating systems 98SE, 2000, XP, Vista, 7 and Mac OS X
- Compliant with USB 2.0
- Data transfer rates up to 480 Mbit/s



<b>790-3681</b>	USB 2.0, 15m
-----------------	--------------







# SUSTAINABLE TECHNOLOGY

Our range of sustainable products can help you to with energy conscious solutions.



Browse and shop thousands more brands and products online at [au.rs-online.com](http://au.rs-online.com)

## Fluke Acoustic Imagers

- 7 inch 1280 x 800 LCD with capacitive touchscreen
- Blended live SoundMap™ with visual image
- Lower utility costs, reduce leak detection time and improve reliability in your production line
- Do more with the same air compressors – delay the capital expense of purchasing an additional compressor



FLUKE

187-6163	2kHz to 50kHz, 0.5m to > 70m	ii900
187-6163	2kHz to 100kHz, 0.5 m to 120 m	ii910

## RS PRO NiMH Rechargeable Batteries

- Long lifespan – the battery lifespan is expressed in charge cycles
- One cycle is a complete discharge followed by a complete recharge
- NiMH batteries can outperform an alkaline battery in a single charge
- Advantageous for high current drain devices



RS PRO

617-0773	AA 2.6Ah, 1.2V - Pack of 4
476-2033	AA 2.3Ah, 1.2V - Pack of 4
504-6225	AA 2Ah, 1.2V - Pack of 4

## Altivar Process Variable Speed Drives

- Offers your business optimisation, real-time intelligence and provides the efficiency that you deserve
- The Altivar Process Drive gives you extensive flexibility in water, wastewater, mining, minerals, metals as well as oil, gas, food and beverages



IP RATED  
IP20



125-3239		ATV320U06M2C
125-3243		ATV320U07M2C
125-3255	1-Phase In, 0.1 □ 599Hz Out, 2.2 kW, 230 V ac, 24 A	ATV320U22M2C
125-3262	3-Phase In, 0.1 □ 599Hz Out, 5.5 kW, 400 V ac, 20.7 A	ATV320U55N4B
220-8683	3-Phase In, 4 kW, 600 V, 5.8 A, 6.5 A	ATV320U40S6C

## Solar Panel Connector

- IP67 connectors designed to meet the stringent requirement of Photovoltaic installations
- Equipped MC-Multilams on the plugs make a very low contact resistant
- Central fixing hole for tying to structure



IP RATED  
IP67



560-947	Female to Male, CSA, 2.5 □ 4.0mm², Rated At 30A, 1kV	32.0018+32.0019
560-997	Male, CSA, 4 □ 6mm², Rated At 30A, 1kV (Pack of 5)	32.0017P0001
560-975	Female, CSA, 4 □ 6mm², Rated At 30A, 1kV (Pack f 5)	32.0016P0001

[au.rs-online.com/sustainable-tech](http://au.rs-online.com/sustainable-tech)



## SUSTAINABLE TECHNOLOGY

### Food Grade Bio Degreaser

- Food Grade Bio Degreaser is an extra heavy duty cleaner formulated to penetrate and dissolve tough grease, oil and contaminants for easy removal – safely
- Offers next-generation high performance cleaning technology that is pH neutral, safe on surfaces, users and the environment



238-7871 750ml

FG05167

### VC Wipes

- Wiping cloth made from non-woven fibre, spun laced. Highly absorbent with low lint
- Exceptional strength, durability and absorbency
- With extremely low lint, used wet, dry or in-between these wipes are more versatile than cloths and rags



235-3056 60x32 cm

VC600

### Wypall® X80 Jumbo Roll Wipers

- Extra strong, absorbent and bulky - ideal for heavy duty wiping tasks
- They are compact and can be re-used for cost-effective wiping. WYPALL® X80 Wipers can halve your waste disposal costs and help to reduce freight and storage costs



226-4110 Roll of 540

94173A

226-4179 Mobile Jumbo Roll Dispenser

4951



794-6922 87L Blue Conatiner FG354007BLUE

241-1786 Double Dolly 1956191



## Creating a better tomorrow

## Put your confidence in our sustainable solutions

We set ambitious **sustainabaility** goals in key priority areas which enable us to have a lasting positive impact around the world. Our priorities and goals are informed by who we serve, what we do, and how we do it. We work together to foster innovative ideas and pursue longer-term change while striving to create social, environmental, and financial value.





# MAINTENANCE AND REPAIR

With our unbeatable range we can support platform maintenance & repair in a timely and cost-effective manner.



RS PRO

FLUKE

Makita

suttontools

3M

TELEDYNE LECROY  
Everywhere you look

TENGTOOLS

Browse and shop thousands more brands and products online at [au.rs-online.com](http://au.rs-online.com)

## SDS+ Brushless Hammer Drill

- Able to drill in concrete as fast or faster than 24V Cordless Combination Hammer model BHR200
- Compatible with all 18V Lithion-Ion LXT battery packs
- One-touch slide chuck for SDS-plus bit
- Makita SDS+ Drill Bit Set is a perfect companion to your SDS Drill with Hammer/Chisel function
- This cost effective Makita set contains 5 chisels and 12 bits from the more popular parts of the range and offer excellent cutting performance and can be used for concrete, demolition, render, chasing and fixings



**812-9976** 18V, Body Only

DHR242Z

**848-3633** Chisel Bit Set

D-21200

## Nitrile Disposable Gloves

- Powder free, made from a unique blend of vinyl and nitrile making them stronger than standard vinyl gloves.
- They are disposable yet strong, durable and with excellent grip.
- Does not contain DOP/DEHP phthalates
- Latex free, ideal for latex allergy sufferers
- Ambidextrous design, powder free and for single use, non sterile



**235-2889** Small (Box of 100) 41079

**235-2890** Medium (Box of 100) 41080

**235-2891** Large (Box of 100) 41081

**235-2893** XL (Box of 100) 41082

## x-fit Unattached Disposable Ear Plugs

- Ergonomic shape and low expansion pressure for comfortable fitting
- Pressure build up on outer ear canal reduced due to patented x-recess
- Unique comfort maximises wearer comfort
- Easy removal
- Lime colour for hi-visibility



uvex

**768-9152** 26dB (Pack of 200 pairs)

XF-PB

## FX600 Soldering Iron

- Lightweight, ergonomic handpiece
- Compact size
- Suitable for SMD and Through hole applications



HAKKO

**768-8985** 50W

FX600-14

## Black Self Amalgamating Tape

- Easy unwind
- Extremely flexible
- Resistant to water, ozone and UV
- Excellent low and high temperature performance
- Excellent conformability to awkward shapes
- Breaking load is 20.0N/cm



RS PRO

**146-8998** 25MM X 10M

## Keysight Technologies U5857A Thermal Imaging Camera

- Allows engineers to safely and efficiently identify potential faults without shutting down the systems or disrupting the productivity of an industrial plant
- Temperature measurement range: -20 to +1200°C
- Detector Resolution: 160 x 120
- IP rating: IP 54



KEYSIGHT TECHNOLOGIES

885-5091

-20 to +1200 °C

U5857A

## FLIR TG56 Digital Spot IR Thermometer

- Precise, non-contact measurements of temperature
- 1.45" TFT LCD screen
- Rugged, industrial casing will withstand a drop of up to 3m
- High/low visual alarms
- Built-in laser targeting system makes it easy to identify the measurement point



TELEDYNE FLIR

922-8768

INFRARED &amp; TYPE K T/C

TG56

## Hydraulic Service Junior Kit

- G1/4 BSP pressure port
- 1500 hour life time cycle internal battery
- Temperature range 0°C to +50°C

IP RATED  
IP67

Parker

**511-6706** 600 bar

SCJN-KIT-600

## VDE Tool Kit

- Tool kit containing all the essential hand tools for electrical work
- All tools tested to IEC 60900
- Kits contains: combination pliers, long nose pliers, cutters, Ph2 screwdriver, 4 & 5.5mm slotted screwdrivers in a plastic case with transparent lid



RS PRO

**473-350** 7 Piece

## DPI 705E and DPI 705E-IS Handheld Pressure Indicators

- 48 pressure ranges from ±25 mbar to 1,400 bar (±1.69 psi to 20,000 psi)
- Total 1 year uncertainty 0.05% full scale over -10°C to +50°C temp range
- Remote plug + play pressure and Resistance Temperature Detector sensors
- DPI705E Safe Area pressure indicator
- DPI705EIS Hazardous Area pressure indicator



Druck

**201-2871** 200 bar, Hazardous Area

**201-2877** 70 bar, Hazardous Area

**201-2885** 2 bar, Hazardous Area

**201-2870** 70 bar, Safe Area

**201-2878** 350 bar, Safe Area

**201-2867** 10 bar, Safe Area

## FLIR SV87-KIT Vibration Monitoring Kit

- A wireless connected sensing-solution designed for continuous vibration and temperature monitoring
- The vibration trending and analysis can help detect serious problems with industrial machines long before the damage can be seen
- Monitor vibration and temperature frequently to make better-informed decisions
- Minimize exposure to dangerous environments and difficult-to-access locations
- Analyse data quickly



TELEDYNE FLIR

211-0028

FLIR SV87-KIT Vibration Meter

SV87-KIT



Fluke Solutions for Mining, Engineering, and Maintenance Professionals.

The mining industry covers a wide range of operations, both above and below ground, such as coal, precious metals, non-precious metals, other minerals, and aggregates, sand and stone. People who work in the mining industry know how unforgiving and potentially dangerous these environments can be. It is critical to maintain stable, continuous operations without sacrificing safety or quality.

Fluke makes rugged, reliable, quality tools mining professionals can count on. Tools designed for the mining environment, the professionals who work there, and the challenges they face every day.

See our full line of innovative products at [au.rs-online.com](http://au.rs-online.com)

Electrical Engineer

- Issues faced:

  - System maintenance and testing
  - Consistent, quality power delivery from utility or local power generation
  - Building, system, and machine downtime prevention
- Fluke solutions:

  - Fluke Connect®
  - Multifunction Process Calibrators
  - Process Test Tools
  - Pressure Gauges and Calibrators
  - Power Quality Analysers
  - Insulation Testers
  - Earth Ground Testers
  - Digital Multimeters
  - Insulation Multimeters

Maintenance Engineer

- Issues faced:

  - Uptime of systems and equipment
  - Quality control
  - Maintenance expense
  - Personnel safety
- Fluke solutions:

  - Fluke Connect
  - Power Quality Analysers
  - Digital Multimeters
  - Infrared Cameras
  - Vibration Tester
  - Compressed Air, Gas and Vacuum Leak Detection

Mechanical Engineer

- Issues faced:

  - Equipment installation
  - Preventative maintenance, and repairs
  - Determining optimal machinery replacements
- Fluke solutions:

















  - Fluke Connect
  - Infrared Cameras
  - Vibration Tester

Electrician

- Issues faced:

  - Downtime prevention
  - Safety, energy maintenance, and troubleshooting
  - Power and control installation
- Fluke solutions:

  - Fluke Connect
  - Power Quality Analysers
  - Insulation Multimeters
  - Insulation Testers
  - Clamp Meters
  - Digital Multimeters
  - Power Loggers
  - Infrared Windows

Process Calibration Tools			Electrical Test Tools								Vibration and Industrial Imaging Tools				Air Leak Detection				
Multifunction Process Calibrators	Pressure Gauges and Calibrators	Process Test Tools	Power Quality Analysers	Earth Ground Testers	Portable Oscilloscopes	Power Loggers	Clamp Meters	Insulation Multimeters	Insulation Testers	Digital Multimeters	Expert Infrared Cameras	Professional Infrared Cameras	Infrared Windows	Vibration Tester	Acoustic Imager				
																			
754 744-2527	726 226-2766		700G 798-8695	729Pro 144-5553	773 669-3493		1777 232-0535	1625-2 Kit 798-3974	MDA-550 230-5659	1738 900-9980	378 FC 220-4446	1587 FC 905-5920	1555 705-1960	28 II EX AU 760-0398	TiX580 240-9411	Ti480PRO 171-6857	CV Series 820-2992	810 744-2192	ii900 187-6163



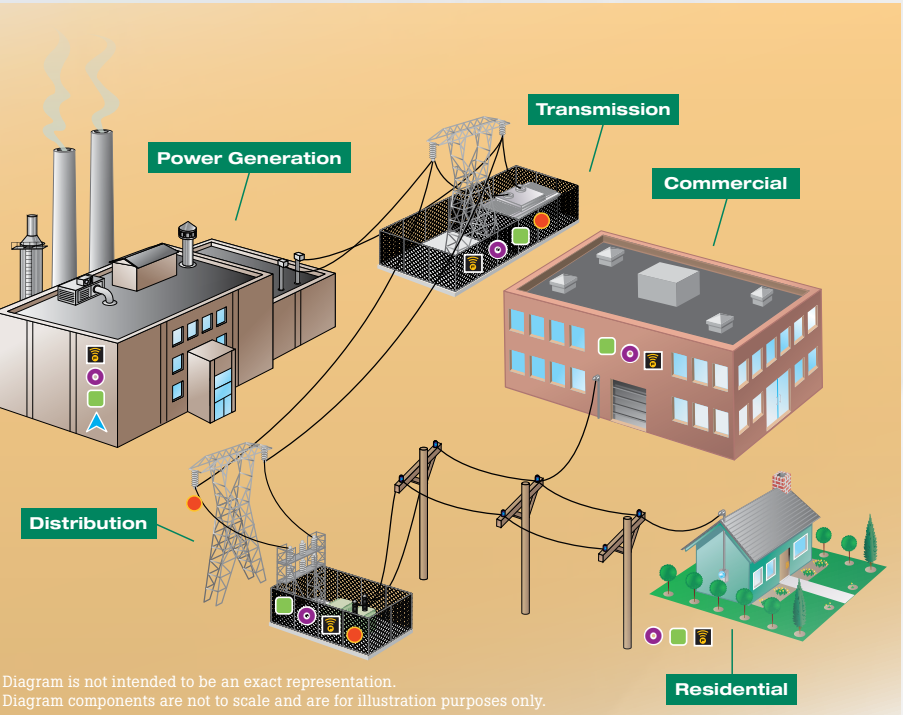
# Utilities—Energy Solutions

## Fluke solutions for accurate information and consistent performance

The utilities industry is a uniquely demanding and frequently dangerous environment. Whether you work in power generation, transmission, distribution, or installation, you can't afford test or measurement errors.

Fluke tools are built to the highest safety and reliability standards. Depend on Fluke, the industry standard against which all other tools are measured.

See our full line of innovative products at [au.rs-online.com](http://au.rs-online.com)



**Facility Maintenance/ Process Technician**

**Issues faced:**

- Ensuring continuous and predictable uptime and downtime
- Safety of personnel and the utility environment
- Budget restrictions
- Immediate response and repair to process interruptions

**Fluke solutions:**

- Fluke Connect®
- Multifunction Process Calibrators
- Process Test Tools
- Digital Multimeters
- Clamp Meters
- Power Quality Analysers
- Portable Oscilloscopes
- Insulation Testers
- Infrared Cameras
- Vibration Tester
- Alignment Tool
- Corona and PD Detection

**Meter Shop Technician**

**Issues faced:**

- Voltage quality
- Accurate revenue measurements

**Fluke solutions:**

- Fluke Connect
- Digital Multimeters
- Clamp Meters
- Power Quality Analysers
- Earth Ground Clamp Meters
- Alignment Tool
- Infrared Cameras

**Substation Technician**

**Issues faced:**

- Preventative maintenance
- Equipment protection with proper grounding
- Transformer breaker and relay performance

**Fluke solutions:**

- Fluke Connect
- Digital Multimeters
- Clamp Meters
- Earth Ground Testers
- Insulation Testers
- Infrared Cameras
- Corona and PD Detection

**Energy Audit Technician**

**Issues faced:**

- Areas of improper insulation
- Unwanted air infiltration and exfiltration
- Quality energy audits

**Fluke solutions:**

- Fluke Connect
- Earth Ground Testers
- Power Quality Analysers
- Infrared Cameras
- Corona and PD Detection

**Lineman**

**Issues faced:**

- Safety during troubleshooting and connectivity
- Accurate and consistent data

**Fluke solutions:**

- Fluke Connect
- Digital Multimeters
- Clamp Meters
- Infrared Cameras
- Corona and PD Detection

**Power Quality Technician**

**Issues faced:**

- Network optimisation
- Customer downtime prevention

**Fluke solutions:**

- Fluke Connect
- Digital Multimeters
- Clamp Meters
- Earth Ground Testers
- Power Quality Analysers
- Power Loggers
- Infrared Cameras

## TEST TOOLS

FLUKE

### Fluke 754 Multi Function Calibrator

- Calibrate temperature, pressure, voltage, current, resistance and frequency
- 3 operating modes: measure; source; simultaneous measure/source
- Easy-to-follow, menu-driven display which guides users through tasks

FLUKE

744-2527

Fluke-754

### Fluke Ti480 PRO Thermal Imaging Camera

- 640 x 480 infrared resolution
- Increased sensitivity to visualise temperature differences
- More intuitive visual interface, improved, user-tested, touch screen interface
- Get 4x the pixel data with SuperResolution, which captures multiple images and combines them to create a 1280 x 960 image

FLUKE

171-6857

640x480 Resolution FLK-Ti480 PRO 9HZ

### Fluke 117 Handheld Digital Multimeter

- VoltAlert Technology for integrated non-contact voltage detection AutoVolt feature for automatic AC/DC voltage selection LoZ: Low input impedance to eliminate stray voltage
- Large white LED backlight

FLUKE

6161460

10A ac 600V ac FLUKE 117 / EUR

### Fluke 1770 Series Three-Phase Power Quality Analysers

- Automatically measure power and power quality parameters
- At-a-glance power quality health for faster troubleshooting
- Easily view V/A/Hz, power, dips, swells, and harmonics data
- Capture high-speed transients up to 8 kV

FLUKE

232-0535

FLUKE-1777

232-0533

FLUKE-1775

232-0531

FLUKE-1773

### Fluke 773 Milliamp Process Clamp Meter

- Measure 4 to 20 mA signals without breaking the loop
- Source/simulate 4 to 20 mA signals and 0-10V DC and provide loop power
- Best in class accuracy of 0.2% with 0.01mA resolution

FLUKE

669-3493

Fluke-773

### Fluke 810 Vibration Meter

- On-board identification and location of most common vibration mechanical faults reducing downtime.
- Fault severity scale with four severity levels helps you prioritise maintenance work
- Repair recommendations advise technicians on corrective action
- On-board context-sensitive help provides real-time tips and guidance to new users
- 2GB expandable onboard memory provides enough space for your machinery's data
- Self-test function ensures optimal performance and more time on the job

FLUKE

744-2192

FLUKE 810

### Fluke 789 ProcessMeter™

- 0-20 mA DC current source/loop calibrator/ simulator with auto and manual step/ramp
- Offers HART mode setting with loop power and a built-in 250 ohm resistor
- Provides all standard DMM capabilities including V, A, Hz, Diode test and continuity

FLUKE

447-7707

1A FLUKE 789

Process Calibration Tools		Electrical Test Tools							Imaging & Vibration Tools		Corona & PD Detection
Multifunction Process Calibrators	Process Test Tools	Power Quality Analysers	Portable Oscilloscopes	Clamp Meters	Insulation Testers	Earth Ground Clamp Meters	Earth Ground Testers	Digital Multimeters	Expert Infrared Cameras	Vibration Tester	Acoustic Imager
754	726	773	1770 Series	190 Series III	376 FC	1555	1630-2 FC	1625-2 Kit	87V	TX580	ii910
744-2527	744-2527	669-3493	232-0535	230-5649	220-4446	705-1960	134-7343	798-3961	194-6806	240-9411	187-6163





VDE Electricians Tool Kit

- Ergonomic multi-component handles
- Optimum balance of torque and control
- High quality and professional tools
- VDE approved for electrical safety
- Made from chrome vanadium steel
- Ideal for a wide range of applications
- Sturdy tool case



734-8885 88PC 1/2IN. Socket & VDE Tool Kit

Blue Bullet Jobber Drill Set

- General purpose drill bit designed for machine and hand held drilling ferrous metals. Includes 25 pieces with 1.0 to 13.0mm x 0.5mm rises drill range in a box with BONUS shaviv mango II deburring handle.
- 118° web thinned point reduces the amount of thrust required
- Precision engineered parallel shank for accurate hole size



204-3774 25 Piece, 1mm to13mm D102SM3

Portasol® Professional Self-igniting Cordless Butane Solder Iron

- A lightweight, compact cordless butane soldering and hot air tool
- Complete kit contains: PSI100C iron with PSI11 tip, PSI13 tip, PSI9 tip, PSI10 tip, Sponge, Case
- ESD safe to protect sensitive components
- Piezo ignition with push-button ease & convenience
- Fast heat-up for high productivity, melts solder in less than 40 seconds



162-4465 PSI100K

216 Piece Maintenance Tool Kit with Case

- An extremely comprehensive set that offers all the accessories you will ever need for making large holes, drilling and driving screws
- This kit ensures all your fasteners and fittings will be presented with a professional finish every time



458-1913 216 Piece P-4404

Nipper Cable Cutter

- Black corrosion resistant pliers Polished head
- Plastic coated handles
- Length 280 mm



136-7418 End Cutting 68 01 280

Electronic Torque Wrenches – E.306 Range

- Easy to use and has a self-test and reset when switched on and gives electronic precision in torque tightening. Accurate to ±2% ±1digit
- USB connection allows storage of 250 results which can be saved and downloaded
- Visual (LEDs) and once the torque is reached in operation an audible beep is indicated
- These tools work from an electric sensor and can sense how much twisting force is applied and shows this by a digital LED display



722-7167	1/2 in Square Drive, 17 to 340Nm 14 x 18mm	E.306A340SPF
722-7158	1/2 in Square Drive, 10 to 200Nm, 14 x 18mm	
722-7142	1/4 in Square Drive, 1.5 to 30Nm, 9 x 12mm	
722-7151	3/8 in Square Drive, 6.7 to 135Nm, 9 x 12mm	
722-7154	1/2 in Square Drive, 7 to 135Nm, 9 x 12mm	

GearWrench 7 Drawer Tool Cabinet

- Professional tool storage cabinet that offers a robust and secure solution to keep your workspace organised. The lockable swivel wheels make it easier to get the tools where you need them and maintain your safety
- Trigger Lock retention system
- Powder coated full polished lacquer finish protects against scratches and scuffs



816-0295 680 x 457 x 991mm 83155

Carbon Steel Insulated Plier Set

- Digitally controlled heat gun with safety heat indicator and four memory programmes
- One-hand operation with soft grip handle and 3m power cord
- Maximum temperature 650°C and airflow of 500L/min
- Ideal for shrinking heat shrink tubing, film or packaging; stripping paint; drying out wood; softening adhesives or thawing frozen pipes



204-3825 2 Piece PG-2



Get organised™

Socket Set

- 18 piece 3/4” drive metric 6 point socket set
- Includes a Teng Tools 72 teeth quick release, twist reverse ratchet together with extension bars and adaptors
- Includes all the most commonly used sizes from 19 to 50mm
- Regular 6 point single hexagon sockets for a better grip
- Teng Tools hip grip design for contact with the flat side of the fastening for reduced damage and use on rounded nuts and bolts



198-2079 335x600x126mm



T3418-6

Screwdriver Set

- Includes flat (slotted), PH and PZ type screwdrivers
- TT-MV PLUS steel alloy for greater strength and material flexibility
- Ergonomically designed bi-material handle for easy use with higher torque and faster speed
- Hole in the handle for hanging or for use as a T handle for extra torque or with a fall protection wire if needed • The handle is moulded around the blade to ensure straightness and to allow larger blade wings which give a higher torque capacity • Supplied in a handy carrying case



198-1852 11 Piece set



MD911N

Impact Driver Set

- Reversible action heavy duty impact driver for shifting stubborn fastenings
- 1/2” drive square drive for use with impact sockets and accessories
- Removable bit holder included for use with 5/16” hexagon drive impact bits
- Set includes 12 impact bits covering the most popular screw head sizes and types



198-1749 15 piece set ID515



Pry Bar Set

- Includes 3 roll/heel bars in three sizes to suit different applications
- Supplied in the unique Teng Tools drawer width TTX tray
- Use on it's own or as part of the Teng Tools “Get Organised” system



222-2994 12”, 16”, 20” pry bars TTXPB3

Torque Wrench

- 3/4” drive torque wrench covering 65-450Nm
- Equipped with an in-built angular gauge for easier after tightening of stretch bolts (TTY torque to yield fasteners)
- Click type mechanism with easily recognisable signal when the required torque is reached
- Supplied in a handy storage case



222-2961

3492AG-E

Adjustable Wrench

- Integral measurement scale on the jaw to check fastening sizes
- Wider jaw opening increases the bolt sizes that can be worked on
- Moving jaw does not protrude allowing use in confined spaces
- Hole in the handle for tool securing when working at height



1981-685	18 inch	4007
1981-686	24 inch	4008

Punch and Chisel Set

- Parallel pin punches, flat cold chisels and centre punches
- High carbon steel hardened to HRC42 and tempered strike ends (HRC40 +/-5) for use with a hammer
- Automatic centre punch with spring loaded stroke also included for marking points quickly



222-2970 14 piece set TEDPC14



### LXT Cordless Angle Drill Driver

- Li-ion LXT battery system
- Rotation, hammering and combined modes of operation
- Keyless chuck operation
- High comfort grips
- Support side handle
- LED job light with afterglow
- Large trigger



**812-9922** 18V, Body Only DDA351Z

### JV101DZ 12V Cordless Jigsaw

- Three orbital settings
- Straight efficient cutting
- Variable speed trigger for greater control
- Ergonomically designed handle provides comfort
- Blower function keeps sawdust from obscuring cut line



**123-9997** 12V JV101DZ

### CXT Keyless Cordless Drill Driver

- Ergonomic soft grip
- 2-Speed variable & reverse
- Keyless chuck capacity: 0.8mm to 10mm
- All-Metal gearing
- Compact and lightweight
- Electronic brake



**124-0006** 18V DF332DZ

### DTD153Z 1/4in 18V Cordless Impact Driver

- Cordless impact
- Brushless motor
- Aluminium gear housing
- LED job light
- Ergonomic soft grip
- Electric brake



**812-9900** 18V DTD153Z

### BL1830B 3Ah 18V Power Tool Battery

- Long lasting lithium-ion power tool batteries from Makita which are suitable for use with Makita 18 V LXT Power Tools
- 40% lighter than a similar Ni-MH battery and have an extended length of time during which they hold their charge



**385-455** 3Ah 18V BL1830B

### DJV180Z 18V Cordless Jigsaw

- Quick-release tool-less blade change
- Sturdy adjustable base for accurate cutting
- Variable speed control
- Soft start
- Built-in job light
- Orbital action
- Ultra-low vibration



**812-9941** 18V DJV180Z

### DTM50Z 18V LXT Li-Ion Cordless Multi Cutter

- Compatible with Lithium-ion LXT series 18V batteries
- Easy to use, a thumb on/off switch
- Hex wrench holder on body
- Variable speed control with a dial
- Accessories can be installed at 30° increments across 360°



**812-9954** 18V DTM50Z

### BGD800Z Cordless Die Grinder

- Powerful motor delivers 25,000 RPM to handle the most challenging applications
- Torque Limiter
- Small diameter circumference grip for added comfort
- Easily accessible carbon brush



**812-9950** 18V DGD800Z

### LXT Circular Saw

- Adjustable circular saw, allowing for optimal visibility and accessibility when cutting in tight spaces
- Rigid Aluminium base providing high quality and toughness
- Smooth yet powerful motor for cutting various types of wood
- Maximum angled cut up 50 degrees to a depth of 36 mm



**812-9938** 18V, Body Only DSS611Z



Makita is offering 5 year limited warranty on new cordless skins that are registered online\*

\*Visit Makita.com.au/MyMakita to register and for full terms & conditions.

### Peli LED Rechargeable Work Light

- Polycarbonate lens is light weight and impact resistant
- Maintenance Free LED Array (6 x 1W Cree X-RE LEDs) with life expectancy of 50000 hours
- Fully extendable mast (up to 820 mm) with 360 degree rotating lamp head
- Waterproof rubber activation switch



**865-1300** 12 V dc 094300-0001-245E

### Harmony XVU Modular Tower Lights

- The innovative Harmony XVU range of Ø 60 mm tower lights and sounders offers multiple lighting patterns, mounting flexibility, modern aesthetics, and unrivalled brightness.
- IP65 and IP54 protection ratings for sounders
- Ultra-bright LED with 360° visibility
- 6 colors with 4 light patterns: steady, flashing, blinking, and rotating



<b>881-2797</b>	LED Beacon Green, Steady Light Effect	XVUC23
<b>881-2791</b>	LED Beacon Red, Steady Light Effect	XVUC24
<b>881-2832</b>	Beacon Tower Terminal Unit	XVUC21B
<b>881-2823</b>	Buzzer	XVUC9S
<b>881-2845</b>	Terminal unit, 100 □ 240 V ac	XVUC21M

### Unilite Torches

- Suitable for mining
- Safety release valve to release hydrogen gases
- Chemical and corrosion resistant
- Rubberised head and grips for durability
- Ultra strength polycarbonate housing



<b>881-3942</b>	Torch, 350lm	ATEX-RA2
<b>881-3946</b>	Head Torch, 225lm	ATEX-H2
<b>172-1184</b>	Pen Torch, 65lm	ATEX-PL1

### RS PRO LED Head Torch

- Intrinsically safe for use in hazardous locations
- Switchable high and low light output
- Easy single button on the top of the torch to sequentially change between high power, low power, and off
- High power CREE LED



**890-3001** 200 lm, 100 m Range

### Wall Fan

- Robust, durable construction
- Height of the stand mounted unit is adjustable from 1400mm to 1660mm
- 90° oscillating head with 20° up and down tilt
- Finished in a durable grey coloured paint
- Wall mounted unit comes with easy to fit wall mounting kit



**181-8941** 630mm Dia. PWET634-03SP

### XVR Super-bright LED Beacons

- Rotating mirror beacon designed for long distance signalling applications
- Super-bright LEDs
- Low power consumption
- IP66 protection
- Red, orange, green and blue units available



<b>690-3857</b>	Orange	XVR13M05L
<b>690-3854</b>	Red	XVR13M04L

### Wolf Safety Xenon Straight Torch

- High energy alkaline cell certified
- Low power indicator option
- Ultimate light output
- Xenon filled filament bulb
- 2 x 1.5V H-20 (LR20) primary cell batteries



**917-6645** TS-24B







WYPALL X70 Wiping Cloths

- High performance, fast absorbing wiping cloths.
- They are strong and bulky, making them ideal for tough jobs
- Can be used for
- Personal wiping
- Wiping surfaces
- Absorbing liquid spills
- Absorbing oil and grease
- Polishing glass, stainless steel and other metal single sheet wiper, with white colour



226-4260	35cm x 42cm wipes, 300 per pack	94171
226-4262	31.5cm x 42.5cm , 160 per pack	94174
226-4264	220 wipes per roll, Box of 4 rolls	94178

WYPALL\* X60 Wipers

- Strong wiper construction ensures longer lasting wiper performance, maintaining strength wet or dry
- A versatile wiper that is durable enough to handle general cleaning tasks and strong enough to scrub off adhesives, remove oil and debris
- Versatile dispensing systems include pop-up box dispensing, ideal for cleaning or wiping on the move and single sheet dispensing ensuring that individual wipers are dispensed, helping create an efficient workplace



226-4273	Pop-up Poly Wipers, White, 115 wipers/bag, 12 bags/case, 23cm x 42.5cm	94333
226-4269	Pop-up Wipers, White, 130 wipers/box 10 boxes/case, 23cm x 42.5cm	94222
226-4270	Small Roll Wipers, Blue, 80 wipers/roll, 6 rolls/case, 24.5cm x 42cm	94223
226-4271	Single Sheet Wipers, White, 100 wipers/pack, 8 packs/case, 28cm x 35cm	94224

KIMTECH Wettask Wipers & Bucket Dispenser

- A portable dispensing system of dry wipers that can be pre-moistened with a solution or chemical of your choice
- Ready to use system that can save time and effort
- Provides flexibility of using preferred solvents or chemicals
- May reduce solvent consumption and limit chemical/solvent exposure



226-4102	Hydroknit wipers 60 sheets/roll, 6 rolls +1 bucket per case, 30.5 x 31.7cm	6001
226-4103	Meltblown wipers 140 sheets/roll, 6 rolls + 1 bucket per case, 30.5 x 15.2cm	6411
226-4193	Solvents wipers 60 sheets/roll, 6 rolls per case, 30.5 x 31.7cm	6101
898-8327	Bucket dispensers 4 per Case	7919

KWIKMASTER Industrial Wipes

- Hydro absorption - Superior water and oil absorbency
- High strength, performance and abrasion resistance
- Multi-purpose
- Convenient dispensing pop up box
- Rinse and reusable
- Cost effective, disposable wiping solution



241-8614	Roll of 540	KM80WIPERWW0540
----------	-------------	-----------------

Dry Multi-Purpose Wipes

- Highly absorbent with low lint.
- Exceptional strength and solvent resistant
- Size of 35cm x 30cm



235-2847	Carton of 300	40510
----------	---------------	-------

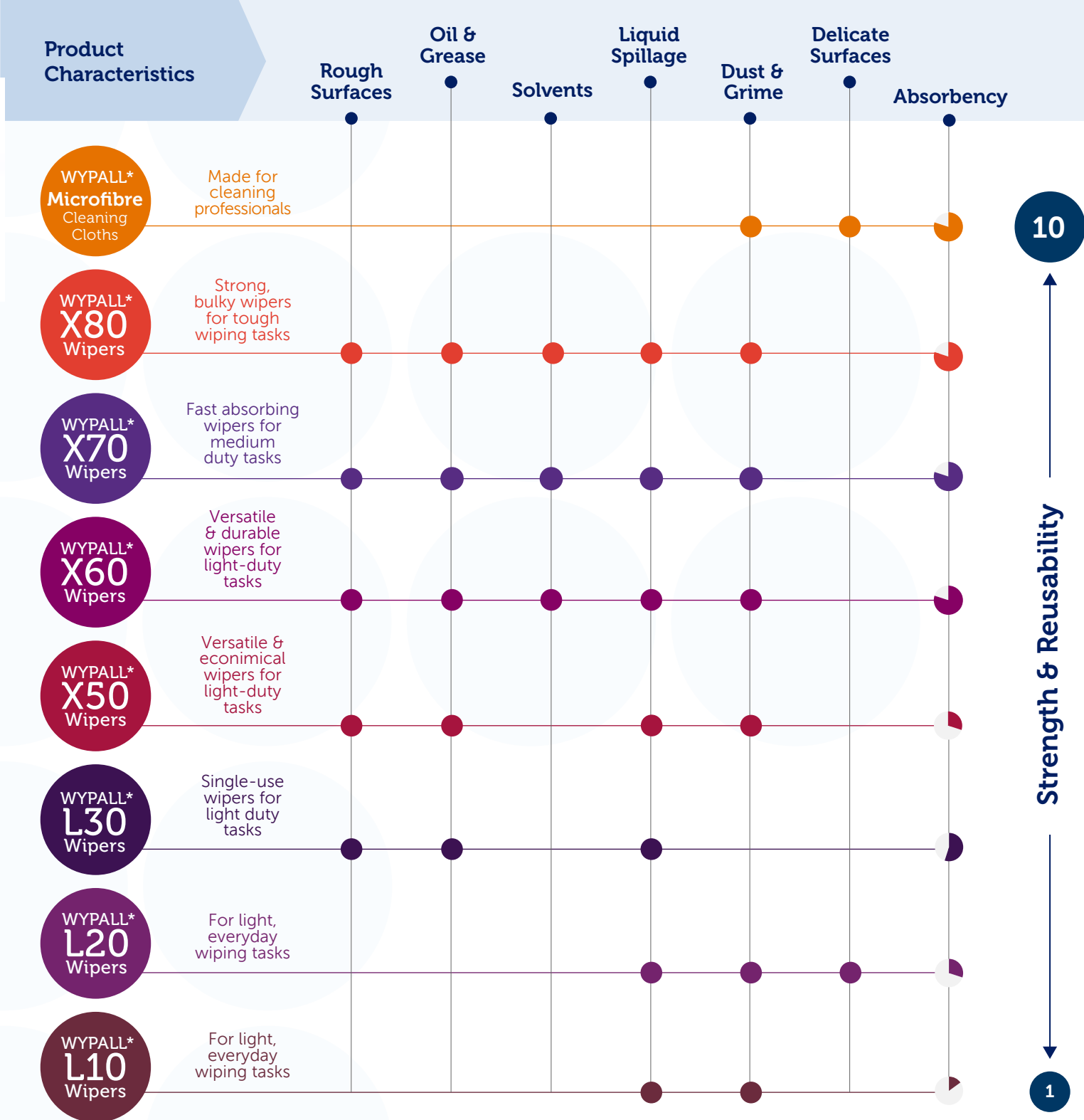
Screen and Stencil Wipes

- Removes solder paste and adhesives from screens and stencils after screen printing
- High wet strength fabric
- Pre-saturated with a powerful low-odour solvent based cleaner
- Fast drying & non-staining



331-1937	20x28cm, 100 wipe tub	SSW100
----------	-----------------------	--------

There's a WYPALL® Wiper for every task



Different workplaces will demand different wipes and ways to access them. To improve your efficiency, productivity and safety, there are a number options you can consider.

- Single sheet or high capacity
- Various mobile, static and fixed dispensers
- Variety of sheet sizes
- Colour coding for task segregation
- Different absorbency performance levels
- Disposable and reusable





Contact Treatment Grease

- Contact Grease 53A in handy 35ml syringe suitable for both hand and machine application
- CG53A reduces contact resistance
- CG53A offers enhanced plastics compatibility and improved mechanical lubrication properties
- Ideal for use in automotive and high quality audio applications
- Temperature range -40°C to +130°C



337-5925 35 ml Syringe CG53A35SL

WD-40 Multi-Use Smart Straw Lubricant

- Does not affects fabrics, rubbers or plastics
- Working temperature ranges between -100F and 500F
- Available with a smart straw fixed straw delivery system for wide area use or more precise usage
- Loosens rust-to-metal bonds and frees stuck, frozen or rusted metal parts
- Quickly dries out electrical systems to eliminate moisture-induced short circuits



124-7168 500 g 44037

Air Duster

- Inert, pure compressed gas for dust removal
- Ideal for removing particulates from inaccessible areas on delicate equipment



168-1644 400ml  
168-1642 300ml

CO Contact Cleaner

- CO Contact Cleaner is a unique, plastic safe, scientifically formulated, technically proven, stable, inert high purity cleaning solvent
- It is non-corrosive, non-staining, rapid-complete evaporation and contains no lubricants
- Contains COZOL □ a special proprietary blend of solvents which enhances the cleaning power without damaging plastics



238-7736 150 g 2015  
238-7737 350 g 2016



Brakleen

- Brakleen is formulated to quickly and safely remove brake fluid, grease, oil and other contaminants from brake linings, pads, drums and callipers
- Selected solvents, controlled evaporation, low surface tension and high density ensure superior cleaning and degreasing properties and can even lift and remove oil and grease that has already penetrated linings



238-7825 500 g 5089



Silicone Grease

- Silicone grease is a water repellent, non-melting silicone grease lubricant;
- Commonly used to lubricate plastic and polythene water pipes, rubber washers and other fluid pipework during assembly;
- Working temperature range is between -50°C to 200°C.



494-124 100g Tube

Electrical Parts Cleaner

- Electrical Parts Cleaner is a unique, scientifically formulated cleaner/degreaser which contains no trichloroethylene
- It is effective in most heavy-duty cleaning applications
- It dissolves grease, oil and sludge quickly for more efficient operation of mechanical equipment



238-7740 400g 2019



Penetr8

- Penetr8 is an industrial strength, low viscosity lubricant and penetrant designed to quickly loosen and free seized, bound or frozen fasteners
- It quickly permeates rust, scale, gum, grease and corrosion with a low surface tension formula that creeps into cracks, seams, threads and joints with great efficiency



238-7833 400g 5501



5.56 Multi-purpose

- 5.56 is a multi-purpose product with superior penetrating power that breaks through rust and corrosion while it clears away scale and dirt
- Lubricates for smooth action, and silences annoying squeaks and squeals



238-7805 400g 5005  
238-7806 4L 5006  
238-7803 1L 5004



High Energy Alkaline AAA Batteries

- High energy density
- Less health and environmental effects
- Long-term shelf life and reliability



176-9039 1.5V, 20 Pack 4903121492



RS PRO Stainless Steel Self Locking Nuts

- 545-piece nuts box
- Self-locking type nut
- Thread sizes of M3, M4, M5, M6, M8, M10, and M12
- A4 (316) corrosion-resistant stainless steel material



200-9807 545 Pieces



3M™ Aluminium Foil Tape 425

- Thermally conductive tape helps dissipate heat and improves heating and cooling efficiency to protect temperature sensitive materials
- Resistant to chemicals to protect surfaces during de-paint process and other chemical masking operations



175-7785	12mm	425 - 12,7mm (21203)
175-7791	19mm	425 - 19,1mm (21205)
175-7808	25mm	425 - 25,4mm (R06933)
144-4029	38mm	425 38mmX55M
175-7814	50mm	425 - 50,8mm (R06933)
144-4030	75mm	425 75mmX55M



RS PRO Barrier Tapes

- Made from non-adhesive polyethylene
- Strong and highly visible
- Ideal for warning of danger and cordoning off potential hazards



763-2049 Red/White PE 100m  
763-2109 Black/Yellow LDPE 100m  
504-6225 2Ah, 1.2V - Pack of 4



RS PRO Stainless Steel Plain Washer

- Corrosion resistance and are suitable for use in many environments
- MA2 stainless steel construction for durability
- BS4320
- Available in a range of metric sizes



527-397 1mm Thickness, M6, Bag of 250  
527-404 1.60mm Thickness, M6, Bag of 250  
527-369 0.5mm Thickness, M3, Bag of 250



Floor marking tape

- Ideal for use for most environments and applications as a universal indicator and identifier of potential hazards or warnings
- Designed with a plasticised PVC film coating to ensure optimum durability, performance and abrasion-resistance, especially in areas with high traffic



197-1012 Black & Yellow, 50mm x 33m



Nylon Non-Releasable Cable Ties

- High quality
- Suitable for a multitude of uses
- Easy to thread



233-506	190 X 4.8 Mm, Pack 1000
233-499	100 X 2.5mm, Pack 1000
233-493	380 X 7.6mm, Pack 100
233-487	300 X 4.8mm, Pack 100
233-483	368 X 4.8 Mm, Pack 100
233-471	203 X 4.6mm, Pack 100
233-477	292 X 3.6 Mm, Pack 100
233-465	150 X 3.6 Mm, Pack 100
233-455	100 X 2.5 Mm, Pack 100
213-2997	250 X 4.8 Mm, Pack 1000
209-8137	361 X 4.8 Mm, Pack 100
811-1482	100 X 2.5 Mm, Pack 100
811-1509	380 X 7.6 Mm, Pack 100
811-1511	300 X 7.6 Mm, Pack 100
811-1515	450 X 8 Mm, Pack 100
811-1524	610 X 9 Mm, Pack 100
811-1666	203 X 4.6 Mm, Pack 1000
811-1669	380 X 7.6 Mm, Pack 1000
811-1678	450 X 8 Mm, Pack 100
811-1684	340 X 7.6 Mm, Pack 100
811-1486	142 X 3.2 Mm, Pack 100
811-1688	300 X 7.6 Mm, Pack 100
811-1495	190 X 4.8 Mm, Pack 100



Visit [rspro.com](https://rspro.com) or scan the QR Code to view over 100 size and pack quantity options of cable ties







### **Committed to you.**

We understand the important role our solutions and products play in helping you achieve your goals, that's why your dedicated account manager is here to support throughout your journey with RS.



### **Over 650K products, more than 2,500 brands.**

We offer a broad and extensive product range to support our industrial and electronics customers with stocked products, from the brands you know and trust – including our own brand, RS PRO.



### **Fast, flexible delivery options.**

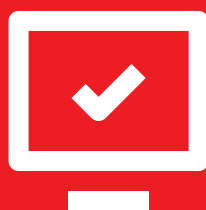
From same day to next working day to call off and consolidated delivery, we've a range of flexible delivery options to suit you. Free delivery available.\*



### **Our knowledge is your power.**

When you need specialist advice, think of our technical experts as part of your team. They're poised with extensive knowledge of our products and specifications to help you make the best choice.

We offer easy access to product support resources online or by phone. Speak to a live chat member on our website for help in finding products or other technical information. Or take a look at our technical data sheets which are available at product level. This can help save time, allowing you access to technical information 24/7.



### **Best in class eCommerce experience**

For a more efficient process for your industrial and electronics product procurement, we have a service to fit your business requirements. From web-based and mobile ordering through to integrated procurement solutions. Ask us about our Purchasing Manager, PunchOut, eInvoicing & eOrdering solutions today.