



[rspro.com](http://rspro.com)

# ENGINEERING ESSENTIALS

## RANGE GUIDE



**ENGINEERING ESSENTIALS - WORKING ENVIRONMENTS** 3

**PRODUCTION LINE** 4

AVAILABLE RANGE 4

RELATED PRODUCTS 5

**TEST & DESIGN LABORATORY** 6

AVAILABLE RANGE 6

RELATED PRODUCTS 7

**WAREHOUSE** 8

AVAILABLE RANGE 4

RELATED PRODUCTS 5

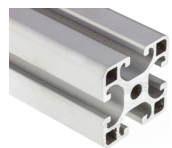
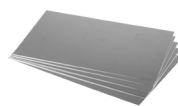
**CONTROL PANEL** 10

AVAILABLE RANGE 10

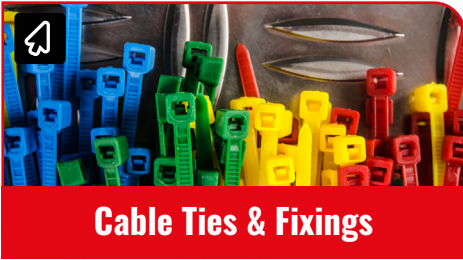
RELATED PRODUCTS 11





**Sensors****Relays****Push Button Switches & Components****Circular Connectors****RF Coaxial Connectors & Adapters****Terminal Blocks****Electrical Power & Industrial Cables****Power Connectors****Pneumatic Connectors, Fittings & Hose****Networking & Coaxial Cables****Multi Function Panel Meters****Trucks, Trolleys & Lifting Tables****Structural Systems****Metal Materials****Enclosures****Rotary Bearings & Housing Units**





**Cable Ties & Fixings**



**Wire Terminals & Splices**



**Material Lifting & Loading Equipment**



**Greases, Oils & Lubricants**



**Personal Protective Equipment & Workwear**



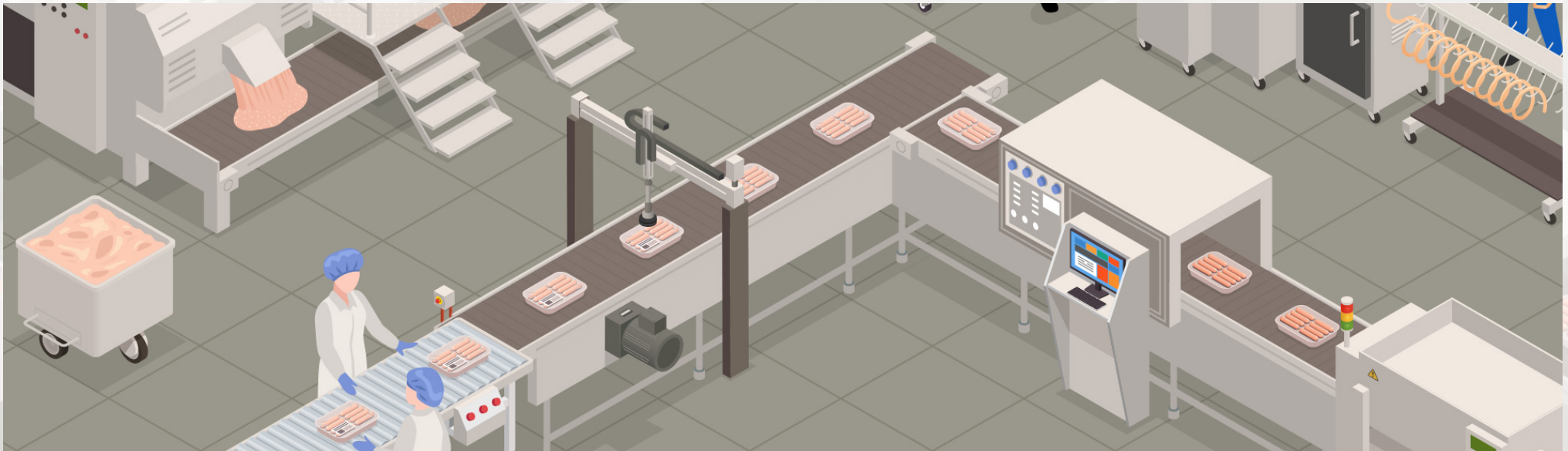
**Fasteners & Fixings**



**Test & Measurement**

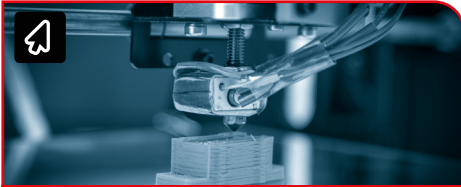


**Hand tools**



**Computer Cables****Networking & Coaxial Cables****Variable Resistors****EMI Filters & Protection****Thermocouples****USB, D Sub & Computing Connectors****Terminal Blocks****Batteries & Chargers****Oscilloscopes & Accessories****Bench Power Supplies****Network Switches****Wire Terminals & Splices****Capacitors****Hook Up Wire****Fuses****ESD Control & Clean Room**





**3D Printing Materials**



**Switches**



**Enclosures**



**Lab Equipment**



**Personal Protective Equipment & Workwear**



**Fasteners & Fixings**

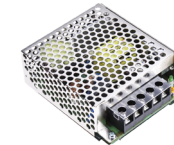


**Test & Measurement**



**Hand tools**



**Trucks, Trolleys & Lifting Tables****Material Lifting & Loading Equipment****Ladders & Steps****Structural Systems****Eye & Face Protection****Head Protection****Electrical Power & Industrial Cables****Workwear****Safety Footwear****Anti Vibration & Levelling Components****Castors & Wheels****Sensors****Security Alarms & Sensors****Latches, Hinges & Handles****Power Supplies****Greases, Oils & Lubricants**





**Fasteners & Fixings**



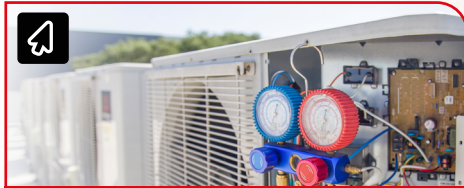
**Cable Ties & Fixings**



**Lighting**



**Site Safety**



**Air Conditioning & Fans**



**Facilities Cleaning & Maintenance**



**Test & Measurement**

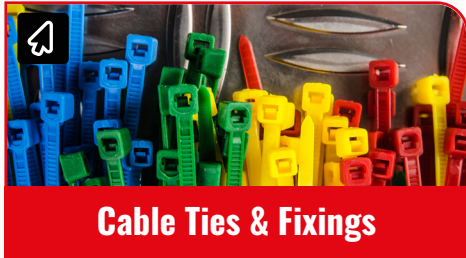


**Hand tools**



**Process Control****HMI Displays****Time Switches****Relays****Network Switches****Terminal Blocks****Automation Signalling****Switches****Fuses & Circuit Breakers****DIN Rail Power Supplies****Axial Fans****Wire Terminals & Splices****Cable Trunking****Hook Up Wire****Cable Joints & Cable Sleeving****Enclosures**





**Cable Ties & Fixings**



**Drill Bits & Parts**



**Cable Glands & Fittings**



**Mains & DC Power Connectors**



**Facilities Cleaning & Maintenance**



**Fasteners & Fixings**



**Test & Measurement**



**Hand tools**



**RS PRO products are audited against demanding international standards, inspected for durability and consistency and tested by leading engineers.**

Only when products have been through this process are they awarded our seal of approval, quality that can be trusted. Confidence in this process is reflected in our long product warranties, proof that our products will consistently deliver the quality you expect for a long time to come.

