



[rspro.com](http://rspro.com)

# INDUSTRIAL AUTOMATION SOLUTIONS

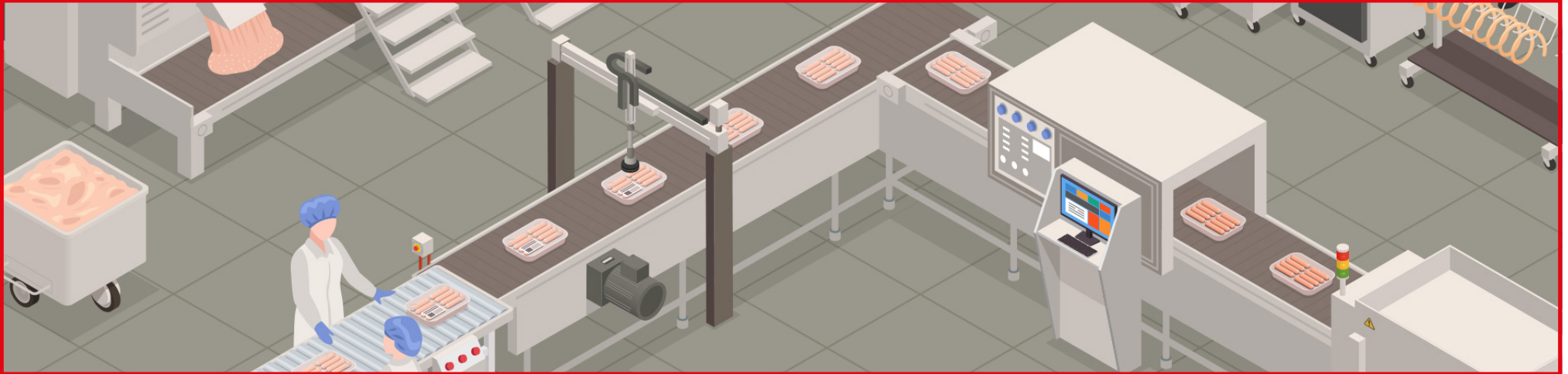
## RANGE GUIDE



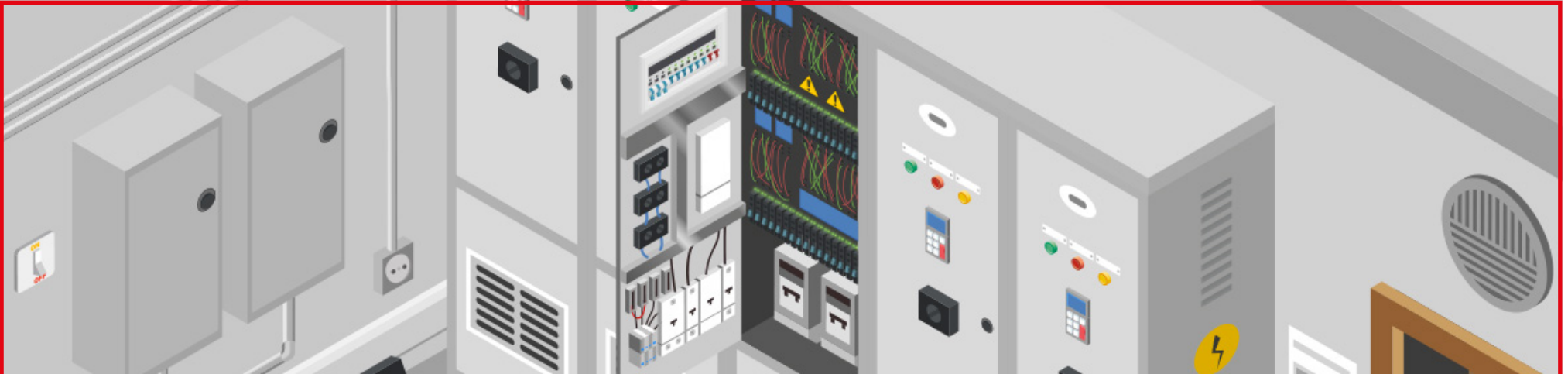
<b>INDUSTIAL AUTOMATION - WORKING ENVIRONMENTS</b>	<b>3</b>
<b>PRODUCTION LINE</b>	<b>4</b>
AVAILABLE RANGE	4
RELATED PRODUCTS	5
<b>CONTROL PANEL</b>	<b>6</b>
AVAILABLE RANGE	6
RELATED PRODUCTS	7

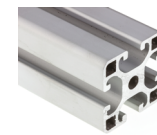


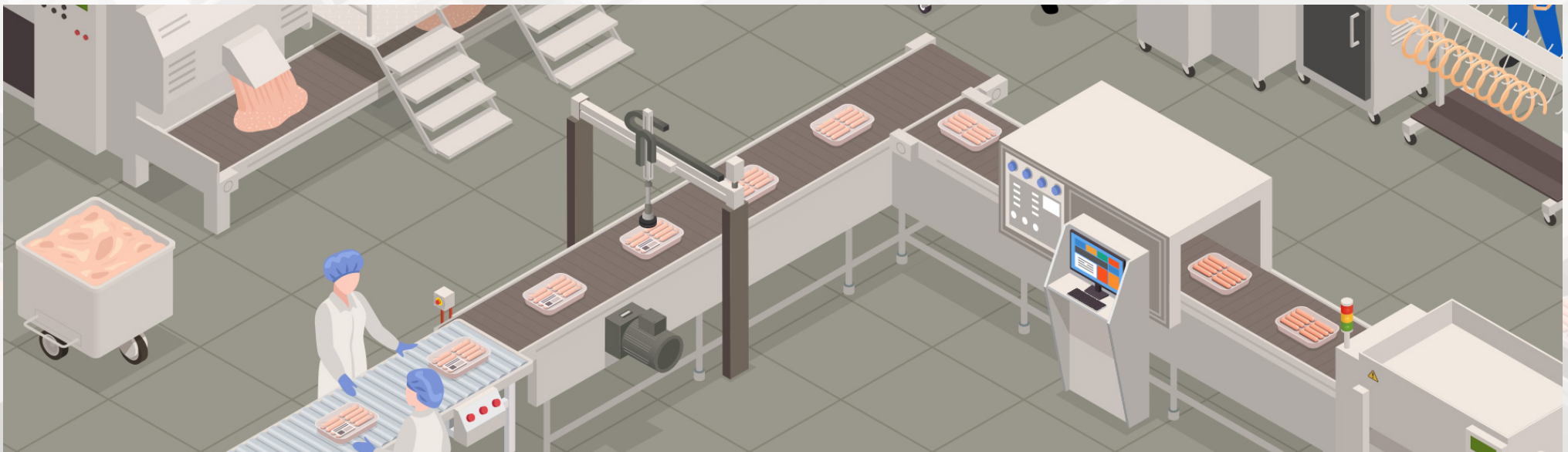
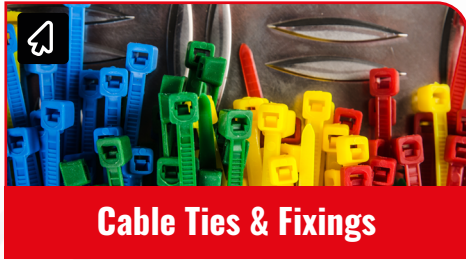
**PRODUCTION LINE**

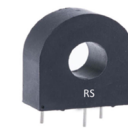


**CONTROL PANEL**



**Proximity Sensors****Level Sensors****Pressure Sensors****Float Switches****HMI Displays****Energy Meters****Electrical Power & Industrial Cables****Gaskets & O-Rings****Temperature Controllers****Heavy Duty Power Connectors****Multi Function Panel Meters****Rotary Bearings & Housing Units****Sounder Beacons****Wall Boxes****Pneumatics & Hydraulics****Structural Systems**



**Process Control****HMI Displays****Time Switches****Relays****Network Switches****Hook Up Wire****Automation Signalling****Push Button Switches****Control Cable****DIN Rail Power Supplies****Axial Fans****Emergency Stop Push Buttons****Enclosures****Counters****Bootlace Ferrules****Current Transformers**



**Cable Ties & Fixings**



**Drill Bits & Parts**



**Cable Glands & Fittings**



**Mains & DC Power Connectors**



**Cable Markers**



**Fasteners & Fixings**



**Test & Measurement**



**Hand tools**



**RS PRO products are audited against demanding international standards, inspected for durability and consistency and tested by leading engineers.**

Only when products have been through this process they are awarded our seal of approval, quality that can be trusted. Confidence in this process is reflected in our long product warranties, proof that our products will consistently deliver the quality you expect for a long time to come.



**AUDITED**

In compliance with industry standard



**INSPECTED**

By leading engineers



**TESTED**

For guaranteed quality and performance

