



# AUTOMOTIVE & VEHICLE MANUFACTURING

The automotive industry is continuing to transform. With automation, big data, AI and electric solutions, there are many challenges and shifts facing manufacturers.

RS is here to help you keep up with the pace of these developments and face the future of the industry.

**RS**



# Contents

06	PRODUCTION MAINTENANCE
07	MOTION CONTROL
09	SAFETY
12	PROCESS CONTROL
14	MACHINE GUARDING
15	SENSING
19	SWITCHGEAR
21	PLC
23	ELECTRICAL
26	MOBILE POWER
28	POWER TRANSMISSION & CONVEYING
31	3D PRINTING
32	VEHICLE COMPONENTS
33	LIGHTS & SIGNALLING
35	CABLE & CABLE MANAGEMENT
36	CONNECTORS
40	BATTERIES
41	AUTOMOTIVE BATTERY MAINTENANCE
44	CLEANING & MAINTENANCE
46	ESSENTIALS
48	HAND TOOLS
51	TEST & MEASUREMENT

Join the conversation



Terms & Conditions

To view our latest prices, charges and full terms see RS Conditions of Sale as set out online at [za.rs-online.com](http://za.rs-online.com).

Published by: RS South Africa.  
Registered office: 20 Indianapolis Street, Kyalami Business Park, Midrand, 1684.

RS are trademarks of RS Group.  
An RS Group Company.

## The automotive industry is changing. Let RS help you keep up.

It's hard to think of an industry facing more changes than automotive manufacturing. There's the shift towards electric powertrains led by a greater public demand and a consumer led desire for connected automobiles, all supported by increasing digital transformation. We also know that for a product to evolve the organisation that builds the product needs to keep up with technological advancements.

RS is here to help you keep up with the pace of developments and face the future of the industry.

No matter where you are, we ensure your products get delivered as efficiently and carefully as possible.

Leave the how to us.



### Your one-stop shop

Get access to over 750 000 products across various product categories and brands ensuring that you get the best value without having to shop around.



### Easy Ordering

Get free delivery on orders over R1000, no minimum order quantity required. Order online, via email and phone or visit our local trade counter.



### Trusted Global Brands

We source and partner with over 2500 global brands that you know and trust to give you access to the widest range of genuine parts.



### Customer Support

Our team is on hand to support with all your queries - contact us via phone, email or speak to us on LiveChat.



### Shop online 24/7

Access our website at any time on any device and shop at your own convenience. Plus you get instant access to technical datasheets that you can download.



### Flexible Delivery Options

Local stocked delivered within 24 - 48 hours. Global stock delivered within 4 - 6 working days.



### RS PRO

Try our private label brand that has been designed according to industry standards with high quality and performance - save up to 30% against other brands.





# Helping Keep The Automotive Industry Moving

The Automotive and specialist vehicle manufacturing sector has been experiencing a renaissance over the last few years.

The automotive equipment sector produces everything from cherry pickers, ambulances and military vehicles to sports cars, tractors and buses.

RS Components have supported numerous specialist vehicle manufacturers and R&D centres with our market leading Electronics & Electrical components offer for many years, giving them access to the latest products as well as design tools. Other sections of the industry including plastic component makers, foundries, gearbox & drivetrain manufacturers and Formula 1 teams have also benefited from our product offer and our world class service.

We are confident that RS can help the Automotive sector thrive and maintain its competitive edge in the growing global market, and will continue to develop our offer of products and services to meet the needs of the industry.

## Common Industry Requirements

We believe that across the industry there are some common challenges and requirements that RS can help support and address:

### Reducing Downtime

Unplanned downtime due to equipment failure can be very costly in terms of both lost time and production output, and materials wastage.

**Solution:** Undertaking regular inspections of parts using non-intrusive tools, such as infra-red thermal imagers and vibration analysers or monitoring and control relays can help you detect and predict issues before they lead to failure. RS can provide advice on the right solution for your application.

### Re-working existing application or design

There is often a requirement to re-work designs for a new customer, or re-task existing machines for the production of a new part or assembly.

**Solution:** RS provides FREE access to its DesignSpark suite of software design tools. This now includes 3D mechanical design, Electrical design and PCB design. All the tools are free to download, activate and use. Find out more online at [www.designspark.com](http://www.designspark.com)

### Energy Management

Knowing how much electrical energy is used by different parts of your process will enable energy efficiency measures to be implemented.

**Solution:** Local Power Monitoring. RS has a range of kWh power meters which can be easily retro-fitted to provide a local indication of power usage. The range includes a variety of capabilities from simple local kWh measurement to power factor & datalogging capability. The RS offer also includes a comprehensive range of energy efficient solutions such as IE2 motors, variable speed drives, and low energy lighting.

## The Linecard

This linecard helps as your guide to the key technologies and brands in our offer which are most relevant to the automotive machinery and vehicle manufacturing sector.

### Sensing

Inductive and photoelectric sensors are used extensively within the production line. Other sensors such as temperature and pressure are also used on-vehicle



### Switchgear

Push buttons, limit switches, control stations, isolators, contactors, and industrial relays are used within the production line control system and within the end product



### Power Transmission & Conveying

Conveying operations within the manufacturing line use power transmission components and these require regular maintenance to avoid unplanned production downtime



### Motion Control

Many parts of the process require motor-driven motion often combined in panel control via a variable – speed drive, soft start and the AC or DC motion on the machine



### Process Control

Will control virtually all processes within the manufacturing line – either individual machines or an entire production line



### Machine Guarding

Machine guarding & safety components are a key requirement. The range includes switches, light curtains safety relays, e-stop push buttons & rope pulls



### Lights & Signalling

LEDs to Heatsinks that protect the performance of the lighting system are available through RS



### Cables & Cable Management

Electrical wiring is a huge element in vehicle systems. RS offers products and accessories to manage complex wiring systems



### Mobile Power

Transistors, connectors, isolators, drivers and voltage protection are all requirements within the auto industry

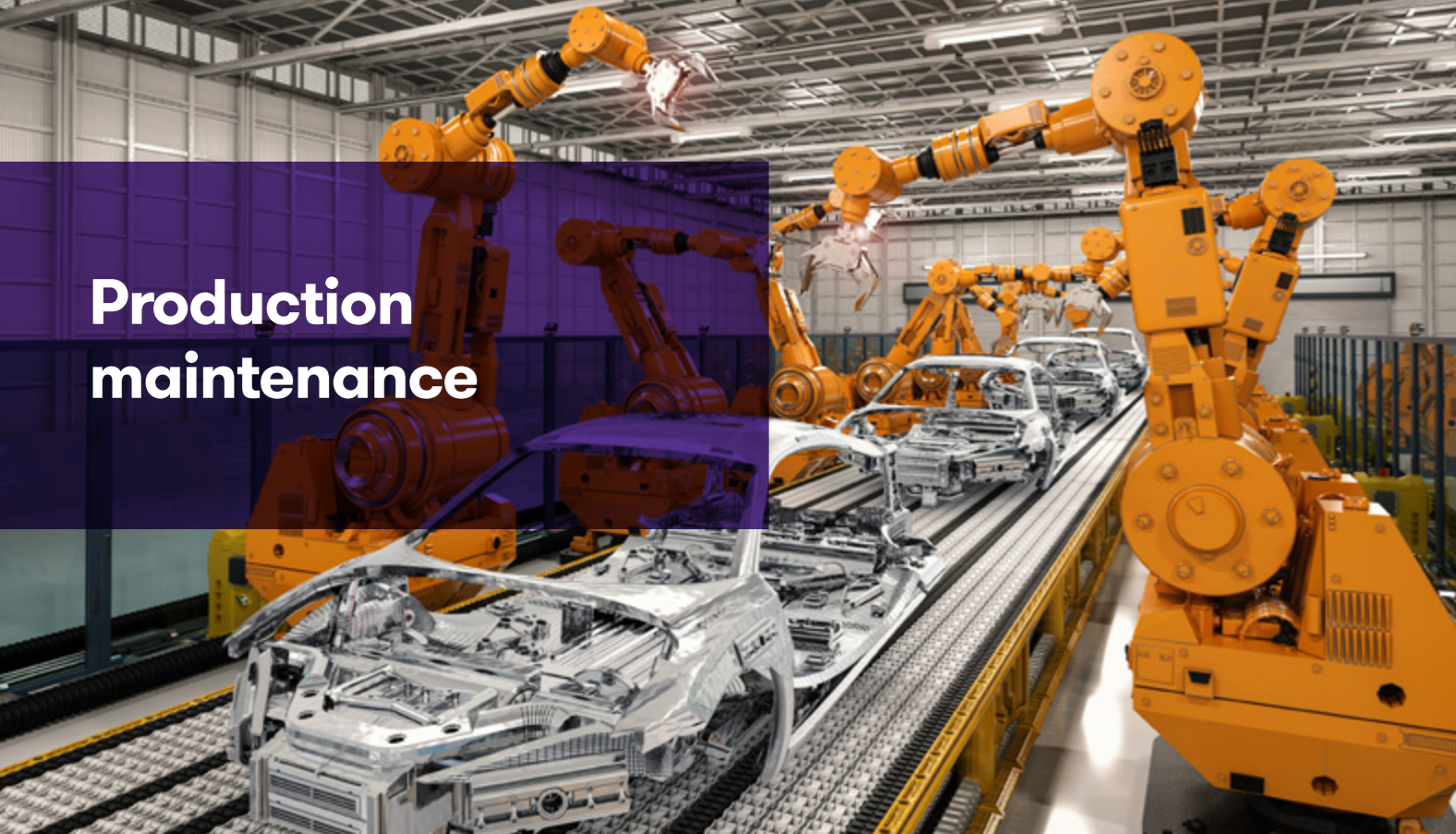


### Essentials

From H&S to PPE, all facilities can be supported with essential products







# Production maintenance

## Schneider Electric Inverter Drive

- Wall-mounting drives, built-in cabinet and floor-standing solutions are available with IP 21, IP 23, IP 54 and IP 55 protection degrees
- Embedded pump monitoring
- Notification of critical operation points without having to have additional sensors
- Process integration with pressure, flow and level control including compensation of flow losses
- Innovative "Stop & Go" function
- Data logging and graphic display of the power consumption
- Embedded web server interface which is based on the Ethernet network, giving you process monitoring with your daily work tools
- Local and remote access to energy use and customized dashboards
- Standardized FDT/DTM and ODVA technology as well as being supported by predefined Unity Pro libraries



- 872-4076** 3-Phase In, 0.1 → 500Hz Out 55 kW, 400 V with EMC Filter ALTIVAR 630, IP21
- 872-4085** 3-Phase In, 0.1 → 500Hz Out 75 kW, 400 V with EMC Filter ALTIVAR 630, IP21
- 872-4060** 3-Phase In, 0.1 → 500Hz Out 30 kW, 400 V with EMC Filter ALTIVAR 630, IP21

## Mitsubishi Inverter Drive

- Simple cabling, the integrated spring clamps connect control and power lines quickly which ensures simple cabling and reliability.
- Easy parameterization software FR-Configurator which allows for easy functions such as graphical machine analysis to optimize the drive system.
- An integrated digital dial facilitates the user's direct access to all of the important parameters.
- The integrated four digit LED display monitors and displays current operating values and displays alarm messages.
- This particular model features a second transistor output, which is sink selectable source logic safety input instead of sink logic.
- Directly connects to a PLC's instead of safety relays.
- Features a sensor-less vector control, which enables torque and exceptional speed performance.
- Serial interface (RS485) as standard.

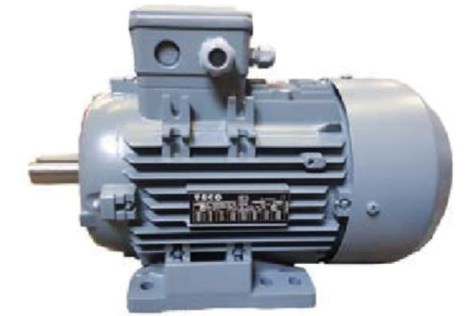


- 767-3021** 1.5 kW, 3 Phase, 400 V ac, 3.6 A, FR-D740 Series
- 767-3028** 3.7 kW, 3 Phase, 400 V ac, 8 A, FR-D740 Series



## 3 Phase Induction AC Motor

- A range of robust and efficient induction motors ideal for a wide range of industrial applications. 3-phase induction motor
- Frame 63-160
- Thermistors Fitted as standard
- Located Bearing at NDE
- Reinforced bearing housing
- 80-112 DE Only
- 132 & 160 DE & NDE



- 187-9882** 5.5 kW, IE3, 3 Phase, 2 Pole, 400 V, Foot Mount Mounting
- 187-9871** 1.5 kW, IE3, 3 Phase, 2 Pole, 230 V, 400 V, Flange Mount Mounting
- 187-9896** 15 kW, IE3, 3 Phase, 2 Pole, 400 V, Foot Mount Mounting
- 187-9858** 0.75 kW, IE3, 3 Phase, 4 Pole, 400 V, Foot Mount Mounting

## Eaton 22 kW Automatic DOL Starter

- Open chassis Star Delta starter for use within customised enclosures, enabling quick and easy installation and direct mounting onto 35mm DIN rail
- Manufactured using readily available Moeller components which conform to the latest IEC 947 standards
- Pre-wired to accept the Moeller Z00 or ZB thermal overloads which offer single phasing sensitivity to IEC 947-4
- Terminal protection to IP20
- Operating temperature range -25 to +40°C



- 535-2227** 110 V ac, 3 Phase, IP55

## Siemens Milltronics Motion Sensing

- Probe can be mounted up to 100mm from target
- Selectable over-speed or under-speed detection
- Start-up time delay
- Temperature rating: -40°C to +60°C
- IP67 rated (probe)
- NEMA 4X, polycarbonate enclosure (alarm controller)
- Aluminium Body (probe)
- Requires a motion sensor 804-4102 for operation



- 804-4086** Siemens Motion Sensing Alarm Motion Sensing Alarm Unit
- 804-4102** Siemens Motion Sensor Motion Sensing Probe

## Schneider Electric Soft Start ATS48 Series

- Exclusive Altistart torque control (patented by Schneider Electric)
- Constant control of the torque supplied to the motor during acceleration and deceleration periods (significantly reducing pressure surges)
- Facility for adjusting the ramp and the starting torque
- Starter can be bypassed using a contactor at the end of the starting period whilst maintaining electronic protection
- Wide frequency tolerance for generator set power supplies
- Starter can be connected to the motor delta terminals in series with each winding
- Built in motor thermal protection
- Processing of information from PTC thermal probes
- Monitoring of start time
- Motor preheating function
- Protection against underloads and overcurrents during continuous operation



- 820-1006** 88 A Soft Start ATS48 Series, IP00, IP20, 75 kW, 208 → 690 V ac
- 820-0996** 250 A Soft Start ATS48 Series, IP00, IP20, 250 kW, 208 → 690 V ac



Challenges and opportunities within the Automotive Industry.

Bring it on.

Empowered.  
From innovation to industry.

**3M Peltor ProTac III Hearing Protection Headset**

- Hearing protector helps protect against harmful noise, whilst allowing ambient sounds to be heard.
- Built-in level-dependent function allows the wearer to hear ambient sounds, such as conversations, machine sounds and warning signals.
- 3.5 mm stereo jack to connect to your mobile phone or two-way radio to hear the call right in your ear.
- Auto power off turns headset off after 4 hours of non-use, to save energy and a low-battery warning informs you when to change batteries.
- Voice guided menu system so no need to take your headset off.
- To reduce the corrosion caused by sweat the electronics are located in the outer part of the cup



**3M Peltor™**

123-8888 3M PELTOR ProTac III Listen Only Communication Ear Defender, 32dB

**3M Peltor LiteCom™ Plus Headset**

- Up to 1 km range • Built in 2 way radio communication
- 8 channels (PMR 446 MHz), 69 channels (LPD 433 MHz)
- 121 digital & analogue subchannels per radio channel
- Level-dependent function for ambient listening
- Li-ion rechargeable battery with 20 hours operating time
- Secondary external input
- Voice operated transmission (VOX)
- Auto power off function
- Battery status indication
- Voice guided menu system



**3M Peltor™**

494-9791 3M PELTOR LiteCom Plus Speak & Listen Communication Ear Defender, 32dB

**3M™ Half Mask, One Size, Dual Inhalation Valves**

- Breathe easy in hazardous environments with this half mask from 3M. It has bonded carbon particulate filters to prevent you from inhaling organic vapours and particulates at up to 10 times the workplace exposure limit.
- Low profile design for better peripheral vision
- Adjustable head cradle and easy to fasten neck straps
- Soft, non-allergenic material with textured face seal
- Lightweight, well balanced design



**3M**

189-3493 4000+ Series Half-Type Half Mask

**Blaze Welding Shield**

- Auto-darkening filter that provides uniform shading across the entire viewing area
- The shields have five user-selectable dark shades from shades 8 to 12
- Three sensitivity settings
- Lightweight
- Versatile headband, designed to be adjusted with one hand



**3M**

705-8807 Welding Mask, 44 x 93mm Lens

**3M E.A.R Reusable Yellow PVC Ear Plugs**

- Non-invasive banded hearing protector
- Designed to fit in multiple positions; behind the neck, over the head and under the chin
- Smooth polyurethane pods for protection without insertion into the ear canal
- Secure and comfortable with an easily adjusted ball and socket joint



**3M**

562-261 28dB, 5 Pairs

**3M PELTOR X4, 33dB Ear Defender and Headband**

- High performance hearing protector for protection against high noise levels, whilst maintaining a sleek, low profile, aesthetically pleasing design
- Innovative sealing ring provide excellent acoustic protection particularly against sounds dominated by low frequencies
- Slim and lightweight compared to other high attenuating earmuffs
- Electrically insulated wire headband
- Twin headband design helps reduce heat buildup with good fit and balance



**3M Peltor™**

449-6499 35dB 3M PELTOR Optime III Ear Defender and Headband

**3M™ SecureFit™ Safety Glasses**

- 3M Pressure Diffusion Technology allows temples to naturally adjust to individual head sizes
- Self-adjusting feature eliminates need to stock multiple frame sizes at worksites
- Secure, snug fit keeps eyewear in place without slippage even when the person is in motion
- Anti-fog coating helps keep lenses free of moisture in hot and humid conditions



**3M**

789-7772 3M SecureFit SF200, Clear Eye Protection Anti-Mist

824-5425 3M SecureFit 400, Clear Safety Glasses Anti-Mist

136-3626 3M SecureFit 600, Clear Safety Glasses Anti-Mist



**3M Cylindrical PUR Self Adhesive Feet, 19.1mm diameter x 4.1mm height**

- Excellent skid resistance
- Non conductive
- Long aging resiliency – will not crack or harden
- Abrasion resistance
- Resistance to marring and staining



203-2380 19.1mm diameter x 4.1mm height

**3M Hemispherical PUR Self Adhesive Feet, 10.4mm diameter x 7.9mm height**

- Excellent skid resistance
- Non conductive
- Long aging resiliency – will not crack or harden
- Abrasion resistance
- Resistance to marring and staining



192-2670 10.4mm diameter x 7.9mm height

**RS PRO Rectangular Polymer Non Slip Pad, 16mm diameter x 3mm height**

- Nitrile - Ideal for use with our range of levelling feet
- Nitrile benefits from a high co-efficient of friction and excellent resistance to most chemicals
- Withstands continuous temperature of -20°C to +70°C
- Dychem - Offers 'super high' non slip properties; absorbs shock and vibration; non-conductive; non-toxic; withstands temperatures from 0°C to +50°C



302-2974 16mm diameter x 3mm height

**RS PRO Orange Safety Helmet**

- CE certified
- Vented hard hat allowing a refreshing airflow around the head
- Lateral deformation
- 6 points textile harness
- Wheel ratchet size adjustment for easy fitting
- 7 years shelf life from manufacturing date outlined in product user sheet
- Chin strap included



161-8136 Ventilated

**RS PRO UV Safety Glasses**

- Clear lens, amber lens or smoke lens eye protection
- Polycarbonate
- Frameless
- Moulded nose bridge
- Brow Guard
- Soft rubber arms
- Comfortable
- Safe
- Stylish
- Anti-scratch lens



918-5737 Polycarbonate Lens

**3M** Science. Applied to Life.™

Putting you first.

Reliable, fast, and safe, 3M products make your working day or night easier. Improving efficiency and cutting down on waste. Just the job when you're up against it.

Order your workplace safety products today, visit: [za.rs-online.com/3m](http://za.rs-online.com/3m)



Safety and protection

Search: 3MSafety



Adhesives and tapes

Search: 3MTapes



Abrasive systems

Search: 3MAbrasives

Powered by



**Mitsubishi FX5U - CPU Modules**

- FX5U CPU base units with very fast processing time
- Versions with up to 256 inputs and outputs
- Expanded input/output area for networks and complex applications
- Can be upgraded by combining with expansion modules
- Built-in SD card slot
- Run/Stop/Reset switch
- Built-in Ethernet port, RS485
- Displays the input and output states via LEDs
- Integrated real-time clock
- Programming software GX Works3



875-5672 Mitsubishi FX5U PLC CPU

135-9275 Mitsubishi MELSEC IQ-F PLC CPU Computer Interface, 128 kB Program Capacity, 40 Inputs, 40 Outputs, 5 V dc, 24 V dc

**Jumo Quantrol LC-Series - PID Controller**

- 3 formats: 48 x 48mm, 48 x 96mm and 96 x 96mm
- Two seven-segment LED displays (red/green)
- The values can be displayed in °C or °F
- LED status indicator for the output
- Two-state/three-state and continuous controller (depending on version)
- Sensor monitoring
- Self-optimization (autotuning) for exact PID control
- Manual/automatic mode
- Configurable limit value monitoring (alarms)
- Setpoint changeover
- Level inhibit and key lock
- RS485 interface (Modbus RTU)
- Ramp and timer function
- Firing curve for pottery kilns
- Push-in controller insert
- Setup interface (USB Mini-B)
- USB-cable also available (stock-no. 815-8832)



815-8829 Jumo QUANTROL PID Temperature Controller, 96 x 96mm, 2 Output Analogue, 20 → 30 V ac/dc Supply Voltage

815-8817 Jumo QUANTROL PID Temperature Controller, 96 x 96mm, 2 Output Analogue, 110 → 240 V ac Supply Voltage

**West 6100+ Temperature Controller**

- Dual setpoints with optional remote selection
- Plug in output modules allows installing just the functions needed
- Expanded user-selectable operator modes
- User-selectable plug-and-play output cards
- Process and loop alarms
- Adjustable hysteresis
- Optional analogue Remote Setpoint Input
- Optional 10 V SSR driver
- Improved Windows PC configuration software
- Improved easy to use HMI
- Jumperless input configuration
- Auto-hardware recognition
- Faster communication speeds
- More security options
- Backward compatible panel cut out, housing and terminal wiring capability



123-8241 West Instruments P6100+ DIN Rail PID Temperature Controller, 48 x 48mm 1 Input, 3 Output Relay

123-8239 West Instruments P6100+ DIN Rail PID Temperature Controller, 48 x 48mm 1 Input, 2 Output Relay

123-8240 West Instruments P6100+ DIN Rail PID Temperature Controller, 48 x 48mm 1 Input, 2 Output Relay, SSR



Lascar's PanelPilotACE range of touch screen graphic displays provides an excellent means of automating manufacturing processes in applications that require minimal or reduced human intervention. The net result is labour savings, lower energy & material costs and improvements to quality, accuracy and precision.



**Software Solutions**

Code-free development of advanced touch screen display applications



Design Studio includes a library of meters, buttons and switches. You can also create your own content by combining behaviour and graphical elements.

Hardware elements are dragged from the library into a function builder where associations with graphical elements (such as a needle on a meter) can be defined. Set scaling for analogue inputs, define alarm triggers and behaviours for digital I/O.

**PanelPilotACE Touchscreen Displays**

From background images to text elements, analogue style meters, touch screen navigation, complex logic statements, PID control, serial communications, multi-channel data logging, Ethernet FTP for logged data transfer, trend graphs and maths functionality, PanelPilotACE Design Studio software allows users to build multi-screen interfaces without writing a line of code.

Product	Description	RS Part
SGD 43-A	4.3" Display with Analogue, Digital, PWM and Serial Interfaces	800-6712
SGD 70-A	7" Display with Analogue, Digital PWM, and Serial Interfaces	123-9655
SGD 43-A DK+	Development kit for SGD 43-A display	818-7354
SGD 70-A DK+	Development kit for SGD 70-A display	138-3528
S43-RS485	Add-on board allowing RS485 communication for the SGD 43-A	138-3525
S43-TP	Four-channel thermistor add-on board for the SGD 43-A	123-9656
S70-TP	Four-channel thermistor add-on board for the SGD 70-A	138-3527

**Hardware Solutions**

4.3" & 7" displays with analogue, digital, PWM, serial interfaces, CAN bus and Ethernet for transmission of logged data via FTP

The SGD 43-A and SGD 70-A are the first in a range of PanelPilotACE compatible displays and panel meters designed specifically to run projects created in the PanelPilotACE Design Studio. Both feature capacitive touch screens and a wealth of hardware interfaces including four 16-bit bipolar analogue inputs, eight digital input/output pins, two alarm outputs, four PWM outputs, RS232 and RS485 comms, CAN bus and FTP transfer of logged data via wired Ethernet.



**Development Kits**

Get your project off the ground quickly with a choice of two development kits. No need to create your own wiring loom and test rig. SGD 43-A DK+ and SGD 70-A DK+ are the best choice if you are starting to develop on the PanelPilotACE platform.

They include all you need to begin: a PanelPilotACE display module, a development board and a USB cable. The board itself provides switches, dials, LEDs and screw terminal connections for all the input and output functionality of your PanelPilotACE.





**PSENmag Non Contact Switches, Square**

- Connected via a plug connection or with cable
- Flexible cable outlet, including connector, so there is no need for an angled connector
- Flexible mounting, both the sensor and the actuator support every conceivable mounting configuration
- Cost effective thanks to series connection
- Operating distance of 3 mm or 10 mm
- Extra signal contact and LED



**619-2818** PSENmag Magnetic Safety Switch, Plastic, 24 V dc  
**824-4918** PSENmag Magnetic Safety Switch, Plastic, 24 V dc

**PNOZ X3 Series of Safety Relays by PILZ**

- LED indicator statuses to support switching channel status between 1 or 2 signals & also for monitoring the supply voltage currently in the relay
- Semiconductor output signals: switch status channel 1 / 2
- 3 safety contacts and 1 auxiliary contact
- Several connection outputs & status indicators
- Your opening and closing of the safety function relays is tested automatically within each on-off cycle
- A monitored manual reset is available in this unit
- DIN rail mounting as standard



**245-1848** Pilz 24 V ac/dc Safety Relay Dual Channel With 3 Safety Contacts and 1 Auxiliary Contact

**F3S-TGR-CL Safety Light Curtain**

- Simple to wire, mount and configure
- DIP-switch setup for blanking, interlock function, muting and optical coding
- Floating blanking and Fixed blanking supported
- Muting function and muting lamp integrated
- Type 2 or type 4 acc. EN61496-1
- EN ISO 13849-1 – ready
- Long range active/active system
- Sensing distance 0.2 to 6m (14 mm) and 0.2 to 14m (35 mm)



**757-7651** F3S-TGR-CL Light Curtain, Sender & Receiver, 2 Beams, 14mm Resolution  
**757-7655** F3S-TGR-CL Light Curtain, Sender & Receiver, 2 Beams, 14mm Resolution  
**757-7709** F3S-TGR-CL Light Curtain, Sender & Receiver, 2 Beams, 35mm Resolution

**Schneider Electric Single or Dual Channel Safety Relay**

- Provides 3 N/O safety relay outputs plus 1 solid state output PLC signalling
- Monitoring of start button or automatic starting
- 24Vdc option incorporated for each supply voltage version
- Compact 22.5mm housing



**360-4346** Schneider Electric Configurable 24 V ac/dc Safety Relay Single or Dual Channel With 3 Safety Contacts

**Rope Pull Switch - ZQ700 Series**

- Thermoplastic enclosure
- One-side operation / wire up to 10 m long
- Release push button
- Position indicator
- Large wiring compartment
- Twisting of towing eye not possible
- Wire pull and breakage detection
- One tension force for cable lengths up to 10m
- 1 Cable entry M 20 x 1.5



**741-8675** ZQ700 Cable Switch, Straight, 10m, NO/3NC  
**741-8672** ZQ700 Cable Switch, Straight, 10m, 2NC

**deTech Core Light Curtain Receiver**

- Simple assembly with innovative mounting
- No blind zones
- Integrated LED display
- Resolution of 14 or 30 mm
- Protective field height of 300 mm to 2100 mm
- Automatic calibration on the protective field width up to 10 m range



**136-3375** 30mm Resolution

**Telemecanique Sensors Photoelectric Sensor**

- Four modes of detection in one unit
- Easy set-up at the touch of a button
- Self teach precise set-up 'multi-mode detection'
- Sensing distance dependent on mode of operation
- Through Beam Functionality using additional light source (thru-beam accessory)
- Programmable NO/NC switching
- Connection: pre-cabled or plug-in connector (M12 4 pin male)
- IP67 Protection rating
- Operating temperature range -15 → +55 °C



**444-3451** Telemecanique Sensors Diffuse, Retro-Reflective, Through Beam (Receiver) Photoelectric Sensor  
**377-7242** 2P+E IP66 ATEX Approved Power Connector, Plug, 16A 240 V  
**377-7258** 3P+E IP66 ATEX Approved Power Connector, Plug, 16A 415 V

**Sick W9-3 I/O-Link Photoelectric Sensors**

- Continuous threshold adaption (AutoAdapt)
- Single-lens autocollimation optics
- Simple setting either via teach-in pushbutton, cable or IO-Link
- PinPoint LED technology
- Flexible sensor settings, monitoring, advanced diagnostics, and visualization thanks to IO-Link



**134-7796** Sick Through Beam (Emitter and Receiver) Photoelectric Sensor 0 → 60 m Detection Range PNP IO-Link

**Ultrasonic Barrel-Style Proximity Sensor**

- Provide reliable detection results where optical sensors reach their limits. The high measurement accuracy provided by internal temperature compensation, along with colour-independent object detection and immunity to contamination all ensure reliable operation, even under the most challenging conditions.



**700-2889** M30 x 1.5, 200 → 1300 mm Detection, PNP Output, 9 → 30 V

**Sick Background Suppression Photoelectric Sensor Block Sensor**

- Reliable detection and very precise leading edge detection thanks to the small and homogeneous light spot of the PinPoint LED
- OptoFilter protects from operational interruptions caused by LED illumination or background reflections, e.g. from safety ve
- Free choice of sensor adjustment: Intuitively, quickly and precisely on the housing via the Teach-Turn adjustment or via IO-Link with pushbutton lock for preventing manipulation
- Enormous simplification when aligning the light beam to the object thanks to the PinPoint LED
- The Smart Sensor makes machine processes quicker, more efficient and transparent



**180-6355** 10 mm → 1.6 m Detection Range

**Universal coders with hollow axis, Ø 58, type G1333**

- The coder can be powered by a wide supply range of between 4.75 and 30 Vdc.
- Universal output stage, compatible with Totem pole, NPN or PNP and RS422 or TTL line transmitter.
- Resolution up to 5000 pulses / turn.



**481-7262** Baumer Universal Encoder





**ifm electronic Relative Pressure Sensor for Fluid**

- IO-Link communication
- Independent set and reset points
- Visualisation of the switching states by clearly visible LEDs
- Signal damping, output delay on and delay off times
- High overload protection
- Highly stable ceramic measuring element is tolerant of overpressures
- Low zero offset or drift from ageing, overpressure or temperature
- IP 67



**125-1268** 250bar Max Pressure Reading, 2x PNP/NPN-NO/NC

**S3000 Laser Scanner**

- Simultaneous monitoring of 2 protection fields possible
- Modular concept allowing for expanding the systems
- Easy to install and easy to service
- Certified for vertical use for access control or entry/exit applications, as well as hand protection
- The selectable resolution makes it possible to adapt the devices to a very wide range of application requirements
- Formation of host/guest system



**271-568** 49m Max Range

**Sick Background Suppression Distance Sensor Block Sensor**

- Very high linearity measurement accuracy of up to ± 0.5 mm
- Accurate non-contact distance measurement up to 1 m
- Scalable analogue and switching output
- Reliable operation on all materials
- Display with easy to use setup menu
- Red laser light, (class 2, eye-safe and high visibility)



**219-027** 100 mm → 300 mm Detection Range

**Pepperl + Fuchs M18 x 1 Inductive Proximity Sensor**

- Teflon coated brass housing, PPS sensing face. Carbonyl steel core
- LED indication
- Embeddable
- NO contacts
- IP67
- Operating temperature range -25 to +70°C
- No load current 15mA
- EN60947-5-2



**257-2490** Barrel, PNP Output, 5 mm Detection, IP67

**Inductive Proximity Sensor - Barrel, PNP Output**

- Nickel plated brass housing with PBT face
- LED indication
- Embeddable, flush or non-flush installation available
- IP67
- Supply voltage 10 to 30Vdc
- Short circuit and reverse polarity protection
- Pre-wired types have 2m PVC cable
- Plug-in types have M12 type connector



**239-7451** M12, 2mm Detection

**Magnetic Cylinder Sensor Pneumatic**

- Can be used in all standard cylinders, linear slides, and grippers using the C-slot and - with the help of adapters - in round rod, tie-rod, and profile cylinders
- Drop-in mounting from above simplifies handling and assembly
- Easy adjustment of two switching points via teach-in pushbutton
- LEDs for indicating the two switching points
- Detection range up to 50 mm stroke



**212-8668** IP67, 15 → 30V dc

**Inductive Proximity Sensor**

- Has a metal housing with duroplast sensing face providing high impact and thermal resistance
- Adjustable sensing head, 5 positions
- M12 connector termination. Supplied with 2m PUR single-ended, straight connector lead
- 3 wire dc
- Yellow LED output status display
- Green LED for power on, flashing indicates a short circuit
- Mounting bracket included



**405-7167** 20 mm Detection, IP67

**Through Beam Photoelectric Sensor**

- Visible red light
- Optimised for the detection of small parts
- Sturdy aluminium housing
- Sensitivity adjuster and light/dark switch as standard features of this series
- High switching frequency
- Supply Voltage 10 to 30 Vdc
- M8 Connector, 3-pin
- Protection degree IP67



**44-7147** 30 mm Detection Range





## Haptic and acoustic performance: Switches at the heart of the automotive industry

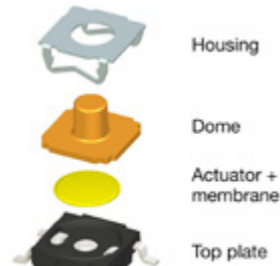
In the past, the electrical items used in automobiles were mainly lights, heaters and wipers that were activated with relatively simple switches, most of them toggles that could be sourced from a few manufacturers. The interior of these classic autos was simple yet functional.

Recently, the trend has been to include more complex features (such as infotainment) and the aesthetics and ergonomics of interior controls became more important in the switch selection, mainly through the layout of the various controls. Manufacturers are focusing on the look and feel of the passenger cabin and searching for ways to differentiate their offerings in an increasingly competitive business.

As a result, the design process for automotive interiors and controls now revolves around haptics, defined as the science and physiology of the human sense of touch, and acoustics, defined as the science of audible sound perception. The brand identity of a vehicle and its position within the range of automobiles from a manufacturer is characterized by the look, feel and sound, and these key elements mainly rely on the switch quality.

From robust pushbutton or toggle switches with relatively long travel, automotive interior subsystems and user preferences have evolved to more modern switches, such as smaller tactile switches with much shorter travel (less than 0.8 mm). With the increase of switches in the dashboard, smaller switches are required to fit within the available space. Many of today's drivers perceive old-style "long-travel" switches to be of inferior quality because they are familiar with the interface of portable devices such as smartphones. Short-travel switches are

usually based on a metallic "snap" dome contact system that interfaces between the actuator and the switch housing.

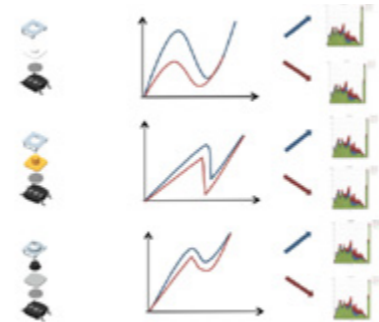


Exploded view of a tactile switch housing

Nowadays, automotive manufacturers and their suppliers producing subsystems such as switch panels often produce detailed specifications for the haptic and acoustic performance of the switches they select to ensure that they meet the brand identity as well as delivering consistency over time. For switch manufacturers, delivering correct and consistent acoustic performance to produce a sound and feel that match the required perception of brand quality desired by the automaker is the biggest challenge.

Several elements enter into the composition of a tactile switch and define the sound it makes. For example, the dome material and composition, structure and design of the switch body, and how the switch fits into the larger system impact the final product. So tuning switches can be a bit of an art, and requires experience to deliver the correct results.

Characterizing the acoustics of any switch usually involves measuring the audible spectral components of the sound made, using an accurate sound meter in a carefully controlled environment. The spectral distribution describes the sound's "color" and clearly differentiates between the two distinct sounds generated by the switch's actuation and release.



Examples of sound's color with 3 different tactile switches

Every component of the switch structure has an impact on the sound of the switch and must be carefully considered and tweaked to deliver the required sound spectrum. Embedding the switch in a printed circuit board can also change the sound of the switch, as can fitting the sub-assembly into the vehicle, so switch manufacturers have to work in close coordination with the vehicle manufacturer to ensure that the switch performs as desired in the vehicle.

C&K, a leading manufacturer of high-quality electromechanical switches, has extensive experience in customizing short-travel tactile switches such as the KSC series, and has an extremely wide range of components to draw upon. C&K has also invested in a state-of-the-art anechoic chamber with accurate sound evaluation that enables evaluation of individual switches and customer sub-assemblies. It offers reliable and high-performance switches with just the right sound and feel.



C&K's KSC4 tactile switch series and C&K's SAM series for seat adjustment systems



### Schneider Electric LC1D TeSys D Contactors

- Built-in auxiliary contacts for added switching capability
- Screw connections: IP20 finger-safe terminals with both North American and International terminal markings
- Can be panel mounted with screws or DIN Rail mounted



**394-9807** Schneider Electric TeSys D LC1D 3 Pole Contactor, 3NO, 9 A, 4 kW, 24 V dc Coil

**400-1495** Schneider Electric TeSys D LC1D 3 Pole Contactor, 3NO, 9 A, 4 kW, 110 V ac Coil

**394-9790** Schneider Electric TeSys D LC1D 3 Pole Contactor, 3NO, 9 A, 4 kW, 230 V ac Coil

### RS Pro Boxed Isolators

- Interlocking lid ensures removal in the OFF position only
- Easy access and switch removal
- Padlockable handles
- Flame retardant material
- Maximum voltage 750V
- ABS, metal clad, diecast and stainless steel versions available



**466-172** 3 Pole DIN Rail Non Fused Isolator Switch, 32 A, 11 kW, IP65

### Schneider Electric Flush Red - Momentary, Harmony XB4 Series

- 40mm diameter
- Metal push button
- Red in colour
- IP66, IP69K rated



**330-9035** 22MM

### Siemens SIRIUS ACT Emergency Stop Push Button Panel Mount

- 1NO/2NC contact configuration
- Rotate to unlatch reset method
- Panel mount with cut-out diameter of 22mm
- Comes with protective collar
- Enclosure top part yellow with a protective collar
- 1xM20 each on top and bottom for metric screw connections



**1736-856** 1NO/2NC

### Siemens Push Button for use with 3SU1

- Two-hand operation console for command devices
- 22 mm
- Enclosure material plastic, enclosure top part grey, 3 control points plastic
- 8 additional reference holes for 22 mm command devices 2 mushroom pushbuttons black 40 mm
- Front mounting, with cable cut-outs for metric screw connections



**183-7300** 24 V ac/dc

### High Capacity AEV Series Automotive Relays

- Capsule contact mechanism charged with Hydrogen gas
- Compact and lightweight
- High contact reliability
- Dustproof and waterproof



**699-5503** Panasonic SPNO Automotive Relay Flange Mount, 24V dc Coil, 300 A

### High Current Relay 150

- High current automotive relay 150A
- M6 screw terminal load connections
- Heat, moisture and vibration resistant
- Minimal contact resistance
- Ambient temperature - 40 to +125°C
- Dimensions: W84 x D40 x H45mm



**763-1468** TE Connectivity SPNO Automotive Relay Chassis Mount, 24V dc Coil, 300 A

### Siemens Sounder Module Siren

- Modular Installation
- Compact design
- Rugged reliable construction
- Shock and vibration resistant
- Adjustable acoustic elements
- IP65 Rated
- 102 dB output



**181-1643** 24 V ac/dc





**Electronic Relative Pressure Switch for Gas, Liquid**

- Electronic pressure monitor PK75
- Quick disconnect
- Process connection G1/4 A / M25 I
- 2 switching outputs
- Electrical design: DC PNP
- Output: 2 normally open
- Switching status 2x-LED (yellow)
- Non latching short circuit protection
- Overload and reverse polarity protection
- Operating temperature: -25 → 80 °C
- IP rating: IP67



**739-6721** 10bar Max Pressure Reading, PNP-2NO

**SIRIUS ACT Selector Switch**

- Self-holding function of the actuator when mounting
- Twist prevention integrated into patented holder design
- Stackable contact modules
- One-handed installation
- Suitable for use in extreme environments
- No special tools required
- Simple geometry for mounting holes



**135-5634** 2 Position, Momentary, 22mm cutout

**Key Switch Complete Units**

- Easy installation
- Suitable for use in extreme environments
- No special tools required
- Simple geometry for mounting holes



**135-5657** 2 mm Cutout Diameter

**3 Pole Panel Mount Non Fused Isolator Switch**

- Main and emergency stop switch
- Handle available in black or red/yellow (emergency stop)
- Accepts 3 padlocks
- Front panel seal IP65
- Side feed with cover
- Screw or DIN rail assembly



**518-7398** 100 A Maximum Current, 37 kW Power Rating, IP65

**Sirius Innovation Motor Protection Circuit Breaker**

- Circuit-breaker for motor protection
- Screw connection/ Spring clamp
- Class 10
- Impulse voltage resistance 6 kV
- Insulation voltage 690V
- Real loss power only 6/7W
- Standard switching capacity
- Approvals: CE / UL / CSA



**706-1762** 0.9 → 1.25 A

**SITOP PSU8600 Switch Mode DIN Rail Power Supply**

- Multiple integrated outputs with selective monitoring
- Individually configurable outputs
- Compensation for power losses can be set separately for each output
- Narrow width without lateral installation clearances
- High efficiency
- Reliable operation
- Two integrated Ethernet/PROFINET ports
- TIA requires less time and reduces cost



**885-6094** 400 → 500V ac Input, 24V dc Output, 10A 960W

**Schneider Electric TeSys Auxiliary Contact Block**

- Low consumption on your control circuit
- 30 Mcycles of mechanical durability
- Compact, lightweight and easily attached to compatible contactors. Front side mounting
- Simplified mounting directly to the contactor/circuit breaker
- 1 carry case



**394-9936** (-) 1NC + 1NO, 2 Contact, Front Mount, 10 A

**Siemens 40A Instantaneous RCD**

- Residual current operated circuit breaker for personnel and fire protection
- Instant tripping, surge current withstand capability >1kA
- DIN rail mounting
- Equipment life span: >10,000 switching cycles
- Enclosure: IP20



**124-7721** RS PRO 3.5m Battery Jump Lead, 220A

**Petzl Head Torch**

- The Siemens Sematic ET 200SP, bus adapter BA 2xRJ45, 2 RJ45 sockets for PROFINET has dimensions of 20mm x 69.5mm x 59mm



**203-4113** Siemens - Adapter for use with PROFINET

**Siemens 6ES7518 PLC CPU**

- The Siemens 6ES7518-4FP00-0AB0 is a SIMATIC S7-1500F, CPU 1518F-4 PN/DP, Central processing unit with work memory 6 MB for program and 20 MB for data
- 1st interface: PROFINET IRT with 2-port switch, 2nd interface: PROFINET RT, 3rd interface



**211-9069** For Use With SIMATIC S7-1500F, RJ45 Connector (Ethernet Communication) Interface

**Siemens - Power Supply for use with SIMATIC S7-400**

- Rated input voltage 120/230 VDC
- Mains/voltage failure stored energy time 20 ms
- Rated output voltage 5/24 VDC
- Design of electrical connection 3x 1.5 mm<sup>2</sup>, solid or stranded wire with end sleeve, external diameter 3 mm to 9 mm



**226-3974** SIMATIC S7-400 Series, S7-400



## Powering 2 tools at once, the multifunctional WT 2M

High flexibility for versatile applications - 2 channel station with 150 W

### Front-mounted power switch

Convenient on/off control

### BACKWARDS COMPATIBLE

With Weller's existing passive tip tools for low cost of ownership

### MICRO TOOLS

Compatible with micro soldering cartridge tip tools (active tips) for highest performance



### Stackable units

The WT Line soldering stations can be stacked on the WTHA 1 hot air station saving space on the workbench



### Multifunctional LCD screen

- > Detailed overview of all functions
- > Adjustable background illumination
- > Power bar graph shows power output from the station to the soldering iron tip
- > Supervise tool status and performance of both channels



### Menu buttons

- > Intuitive navigation
- > Simple operation of the various features of the power unit

### Tooless, quick tip change

- > Active tip (cartridge) system allows quick, convenient change of entire tip when iron is hot
- > No extra tools required to facilitate the end user's day to day work.

### DUAL POWER

Supports two tools with up to 150 W combined power

Weller®

### WSR

2-IN-1 SAFETY REST  
WSR 203 - 176-3374  
WSR 206 - 176-3376

### WT 1

90 W SOLDERING STATION  
WT 1010 SET - 122-7916  
WT 1012 SET - 122-7917

### WT2M

150 W SOLDERING STATION  
176-3371

### WT2010M

150W SOLDERING STATION & IRON  
176-3372

### WTHA 1

900 W HOT AIR STATION  
122-7920



### RS PRO Insulated Ring Terminal

- Copper body material for high conductivity and easy crimping
- Tin plating for resistance to corrosion, added strength and excellent conductivity
- Double crimp design with an internal copper sleeve for added strength and robust crimp joint
- Durable nylon insulation provides electrical insulation, terminal protection and resistance to abrasion, impact and fatigue



267-3745 1.5mm<sup>2</sup> to 2.5mm<sup>2</sup> Wire Size

### Bench ESD-Safe Mat

- ESD bench mat
- Manufactured from rubber
- Supplied with 10 mm stud
- Solder Iron resistant
- Easy to clean
- Low reflecting



787-3114 1.2m x 600mm x 2mm

### Phoenix Contact D Sub Adapter

- From Phoenix Contact, a range of D-Sub gender changers
- The D-sub adapters in this series have yellow chromate steel housings and copper alloy contacts
- The gender changers are straight in orientation and are available in 9, 15, and 25 way male and female options
- All connectors in this range have 4-40 UNC threads
- They have excellent reliability and a high capacity



111-6137 Male 9 Way

111-6160 Female 9 Way

### Molex MINI-FIT Series Crimp Terminal

- Multiple points of contact for reliable electrical connection
- Locking tangs for secure connection in housing
- Range of platings and wire



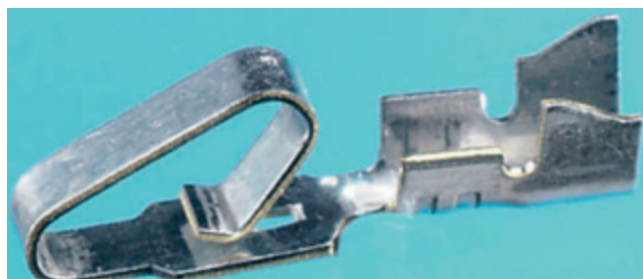
molex

172-9140 Male



**Molex Crimp Terminal Contact**

- KK 254 2759 Series crimp terminal contacts are for use with KK 2695 Series housings and KK 5051 Series housings on 22-30 AWG conductors
- Suitable for use in a range of applications these connectors are robust and reliable for assurance when used in your design



**Binder Cable Mount Connector, 5 Contacts, Miniature Connector**

- From Binder, a selection of M16 straight plugs and sockets designed for cable mounting
- The 680 series of miniature circular connectors have a screw locking mechanism according to IEC 130-9
- An internal bend protection sleeve and strain relief offer maximum cable retention
- With a standard contact layout, the 680 series of miniature circular connectors ensure compatibility with other circular DIN style connectors



**molex**

172-9178 Female

**binder**

129-8854 Male and Female

**Type F - German Schuko 5 Gang Power Distribution Unit**

- Overvoltage protected trailing socket
- Optical trip signal (also, after an over voltage trip condition, the connected device will return to operation if it was switched-on when the over-voltage was detected by the socket strip)
- 5 Schuko sockets
- 2-Pin switch with red illumination
- Socket spacing: 64mm
- Increased touch protection
- Supplied with a 1.5 metre power cord terminated with a Schuko plug
- Spare fuse included
- Suitable for floor or wall mounting



**EHMANN**

652-0386 250 V

**Carbon Film Resistor**

- A comprehensive range of high stability carbon film resistors qualified and tested to the requirements of IEC 115 and IEC 115-2
- The ruggedised welded cap and lead method of manufacture provides a considerable strength and resistance to damage
- The coating materials and the colour bands are epoxy resin and are highly resistant to solvents, abrasion and chipping. Improvements in materials and processing have allowed the rated power to be improved.



**RS PRO**

707-7678 1.2kΩ

**RS PRO Cable Sleeve Kit**

- From RS PRO a portable heat shrink kit consisting of a range of 170 assorted high-quality heat shrink tubing
- The tubing contained in this versatile kit is in a range of colours and diameters to suit a range of different applications
- The box itself is made from plastic with compartments inside for the different heat shrink tubing sizes and has a carrying handle on the top



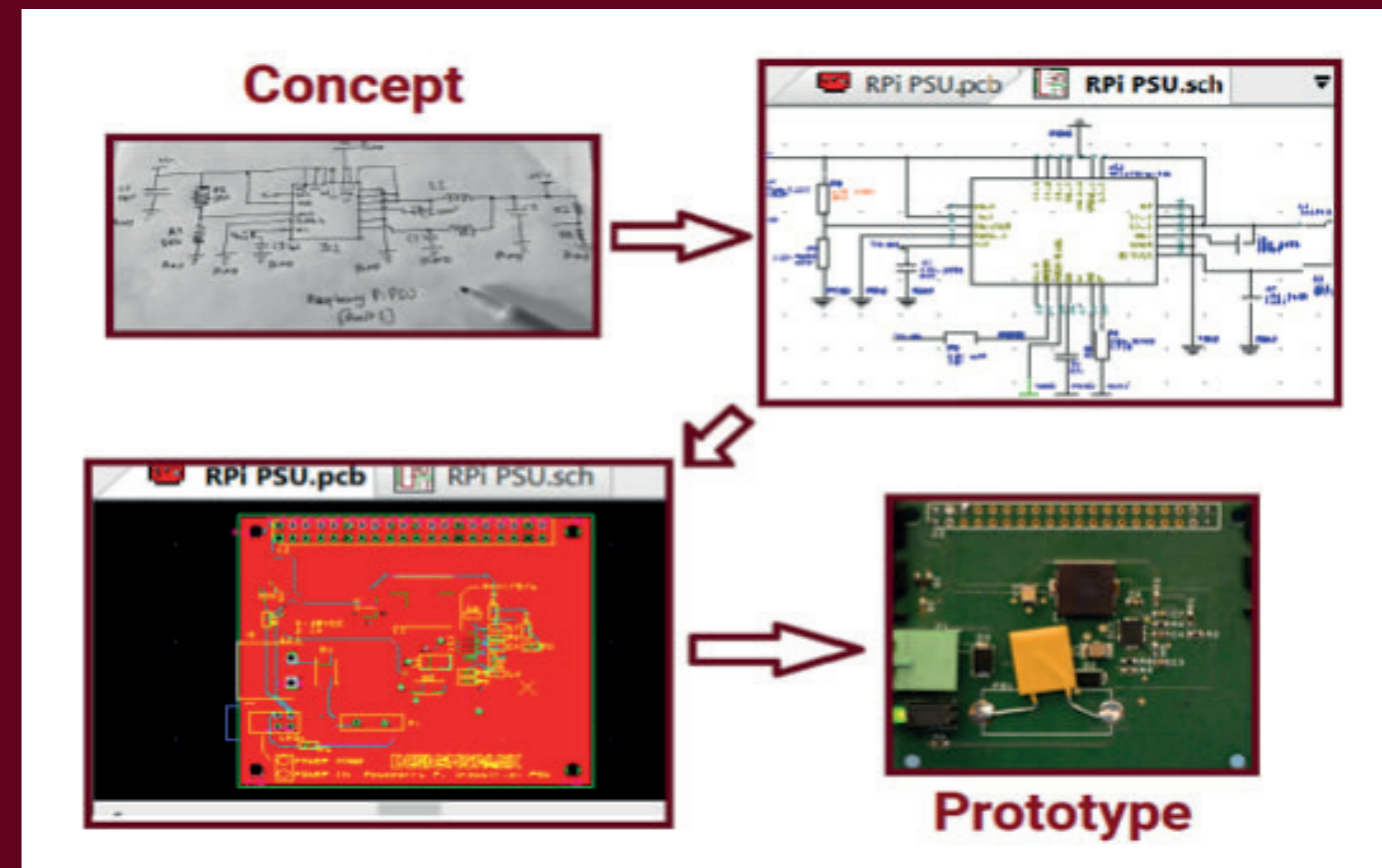
**RS PRO**

397-679 2:1, 3:1 Shrink Ratio

# DesignSpark PCB

Go from concept sketch to prototype, and further

- Choose DesignSpark PCB for your circuit board design needs, as it has the right set of tools to help you save time, money and prevent errors.
- Start your prototyping journey with our free-of-charge software, and upgrade anytime to our Creator or Engineer paid subscription plans for advanced features





**Modified Sine Wave, 100W to 5000W, Universal UK/Euro Output Sockets with USB**

- Universal UK/Euro output Socket • ON/OFF switch control the inverter by hand
- Anodized aluminium case provides durability & max heat dissipation
- Two LED indicators on the front panel shows the working and failure state
- The inverter is compact, lightweight and easy to operate
- Over voltage, Overload, over temperature, short circuit, reverse Polarity protection
- Low voltage alarm & shutdown
- Auto. reset after being in protected
- Soft Start



**816-0068** 1000W Fixed Installation DC-AC Power Inverter, 12V dc / 230V ac

**Blade Automotive Fuses**

- Equivalent to ATO and ATC fuses
- Voltage rating of 32Vdc
- Used for low voltage applications



**563-762** RS PRO 20A Yellow Car Fuse, 32V

**563-750** RS PRO 15A Blue Car Fuse, 32V

**563-740** RS PRO 3A Violet Car Fuse, 32V

**563-778** RS PRO 5A Tan Car Fuse, 32V

**563-744** RS PRO 10A Red Car Fuse, 32V

**RS PRO Plug Connector**

- Prewired plug to bare ended, coiled or flat leads which incorporate either a universal or safety plug, the safety plug having a intergrated 8A fuse.
- Cable: 2 x 0.75mm<sup>2</sup>



**156-4088** RS PRO Plug Connector

**RS PRO, 1.6A Glass Cartridge Fuse**

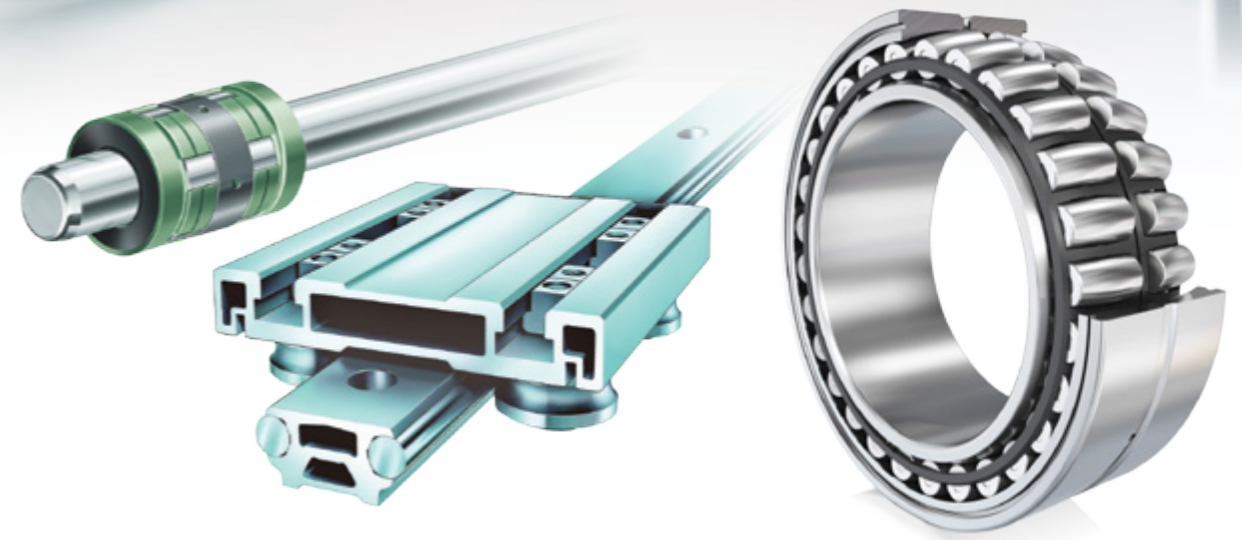
- Fast-acting fuses, size 5 x 20 mm
- Glass body, nickel-plated brass ends
- UL; VDE; SEMKO; BEAB; DIN 4166; IEC 127-2/II and EN 60127-2/II



**610-9670** 5 x 20mm



# Mobility for Tomorrow



Future trends are clear - increasingly intelligent bearings and mechatronics systems require the **Products** and **Maintenance Management** solutions of Tomorrow.

Yet Schaeffler provides those revolutionary solutions Today ...

**Products** which are ever-more efficient, safer and quieter; keeping pace with the demands of heavy industry, renewable energy, automotive and rail transport applications.

And **Condition Monitoring** which remotely evaluates real-load data to extend maintenance intervals safely leading to greater cost savings.

**Mobility for Tomorrow ... it's here today**





**SKF Self Aligning Ball Bearing**

- These bearings are designed to accommodate shaft deflection when running and will also cope with initial misalignment
- The double row bearing is designed primarily to withstand radial load with a small capacity for axial load. Also available with ring seals (rubbing seals) made from oil-resistant, non-wearing synthetic rubber with steel reinforcement on both sides (Type 2RS1)



505-794 Plain Race Type

**LAG Fixed Castor Wheel**

- Black, non-marking rubber tyre
- Electro-zinc plated white passivate pressed steel frame
- RoHS compliant
- Roller hub bearing
- Hardness: 85 ±5, Shore A
- Wheel series



694-8731 230kg Load

**RS PRO Countersunk Head**

- Excellent corrosion resistance
- Versatile in the number of joints they can fasten
- Features a stainless steel finish
- Metric thread
- Recyclable
- Can be used up to 800°C
- A2 grade 18/8 stainless steel type (304 S15)



914-1649 6mm

**Ewellix Makers in Motion Bearing**

- Closed ball bushings and plain bearings for XY positioning, pick and place applications and precision linear motion systems
- Plain bearings to be used in heavy shock, vibration, high acceleration or high speed situations which are unsuitable for linear ball bearings



284-9093 19mm

**NSK Deep Groove Ball Bearing**

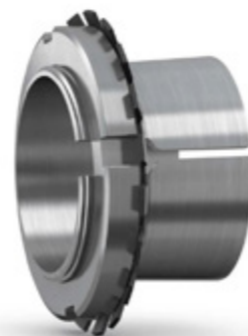
- Accepts radial and axial loads
- 2RS denotes bearing fitted with 2 synthetic rubber seals
- DDU & DD denotes bearing fitted with 2 contact synthetic rubber seals



492-1923 25mm I.D., 37mm O.D

**SKF Bearing Adapter Sleeve**

- This handy piece of kit handles the task of seating the bearing securely. To complete the job, it comes with a KM lock nut and an MB lock washer, so you can be sure of a tight fit.



506-595 H 3130



**RS Pro Pulleys for XPA, SPA & A Belts**

- Suitable for use on drives for belt speeds of up to 40 metres per second
- Compatible with all manufactured V & Wedge Belts, designed to be used with appropriate Taper Bushes
- All conform to ISO 4183.



184-038 Pulley 155.5mm Outside Diameter, 150mm Pitch Diameter, 50mm Bore

184-432 Pulley 155.5mm Outside Diameter, 150mm Pitch Diameter, 42mm Bore

184-066 Pulley 130.5mm Outside Diameter, 125mm Pitch Diameter, 42mm Bore

**British Standard Simplex Chain**

- Witra, a range of chains from Wippermann
- Proof loaded after assembly
- Solid rollers
- Supplied in 5 m (16.4 ft) lengths plus connector
- Manufactured in accordance with BS228, R606 and DIN8187



612-5054 Witra 05B-1 Steel Roller Chain, Simplex Strands, 5m Long, 8mm Pitch

612-5127 Witra 16B-1 Steel Roller Chain, Simplex Strands, 5m Long, 25.4mm Pitch

**Two-Bolt Pillow Block - Normal Duty**

- Two-Bolt Cast Iron Pillow Blocks are cost-effective bearing solutions where ease of maintenance is of primary importance
- Pedestal-mounted bearing housings



750-8946 Pillow Block Bearing 20mm ID

750-8936 Pillow Block Bearing 15mm ID

750-9012 Pillow Block Bearing 30mm ID

**High Capacity Wedge Belts SK S=C PLUS**

- The belt transmits more power than a typical V-belt with a comparable top width.
- The SK wedge belt has a space saving shape and delivers high performance and efficiency (approx. 97%).
- Ideal for use in heavy mechanical engineering with high load requirements.
- Wrapped wedge belts according to DIN/ISO/BS • High performance
- Compact
- Low maintenance costs
- Sections: SPZ, SPA, SPB, SPC



144-8879 SK Series Drive Belt, belt section SPA, 850mm Length

144-8886 SK Series Drive Belt, belt section SPA, 1,582m Length

144-8890 SK Series Drive Belt, belt section SPA, 1,957m Length

144-8892 SK Series Drive Belt, belt section SPA, 2,057m Length

**BT 100 Series Motorised Drive Rollers**

- Roller with integral motor
- M8 threaded spindles (bolt/bracket supplied)
- Grooved to provide drive to nine slave rollers
- Bush type motor
- Quiet running with a noise level of approx. 47 dB(A)
- Service life of approx. 6000 operating hours (effective running time)
- 15 starts/stops per minute
- Motor Voltage Range: 16 - 28 Vdc
- Gear Ratio: 21



437-2804 Interroll M8 Motorised Drive Roller, 50mm x 300mm

**British Standard Pilot Bored Sprockets**

- Manufactured to BS228/13 from steel with black passivated finish
- Easily re-bored as required



146-5431 RS PRO 11 Tooth Pilot Sprocket

182-880 RS PRO 13 Tooth Pilot Sprocket

183-142 RS PRO 15 Tooth Pilot Sprocket

182-896 RS PRO 16 Tooth Pilot Sprocket

183-697 RS PRO 23 Tooth Pilot Sprocket



GOOD MINDS THINK.  
GREAT ONES SHARE.

We connect a world of curious minds from all walks of life.

Our community of over 1.3 million members include students and educators, makers and hobbyists, start-ups, professional engineers and tech suppliers who use our design resources to fire up the ordinary and ignite the extraordinary.

The DesignSpark vision is to educate, influence, promote and practise engineering responsibility and sustainability, so creators and enablers can make a positive impact for a better world.

#ActivistEngineering

DESIGNSPARK MEMBERS  
CAN ACCESS ALL THIS

PROFESSIONAL DESIGN SOFTWARE TOOLS

EXPERT ARTICLES & TECH UPDATES

LEARNING

CAD TOOLS & MODEL LIBRARIES

INSPIRATION, PROJECTS & COMPETITIONS

COMMUNITY COLLABORATION



MakerBot Replicator Z18 5th Gen 3D Printer

- Seamlessly integrated with the MakerBot 3D Printing Experience, a growing collection of hardware, software, materials, accessories, and solutions
- Wi-Fi, USB cable, USB stick, and Ethernet connectivity ensures a seamless production workflow
- App and cloud-enabled for connecting to MakerBot Print, MakerBot Mobile, and Thingiverse (app available for Android and iOS operated devices)
- Onboard camera and diagnostics



845-9558

Ultimaker 3D Printer Bundles

- 3D Printer
- 3x spools of Ultimaker material
- Easy remote 3D printing and monitoring
- Unlimited secure project storage in the cloud
- Enterprise-grade software and user management
- Role-specific e-learning courses taught by experts



Ultimaker

233-7543 2+ Connect

233-7544 S3

233-7545 S5

233-7543 2+ Connect

RS PRO WT280x 3D Printer

- RS PRO introduces the 3D Printer that has been specifically designed to be 3-5 times faster than the normal desktop 3D printers
- With a speed of up to 450 mm/s this RS PRO 3D Printer can be used in a variety of different environments to cut down on printing speed that has been a long term pain point in the history of 3D printing whilst also keeping the accuracy
- The RS PRO 3D printer features dedicated high strength PLA for a lower melting point for even more speedV



202-7268 Mykal Industries 67290 Pressure Washer Cleaner for Spray Wash Equipment

RS PRO 3D Printer Filament

- Material is very light and durable which makes ABS particularly suitable for tools, toys and all kinds of utensils
- Minimal warping
- Reliable bed adhesion
- Highly durable and more flexible than PLA
- Offers good heat resistance and smooth finish



832-0327 Red

832-0311 Black

832-0315 White

832-0337 Silver

Ultimaker Tough PLA 3D Printer Filament

- Impact strength similar to ABS, greater than regular PLA
- Higher stiffness compared with ABS
- Less brittle than regular PLA
- Gives a more matte surface finish quality than our normal PLA
- Suitable for post-processing with improved machinability compared to regular PLA



Ultimaker

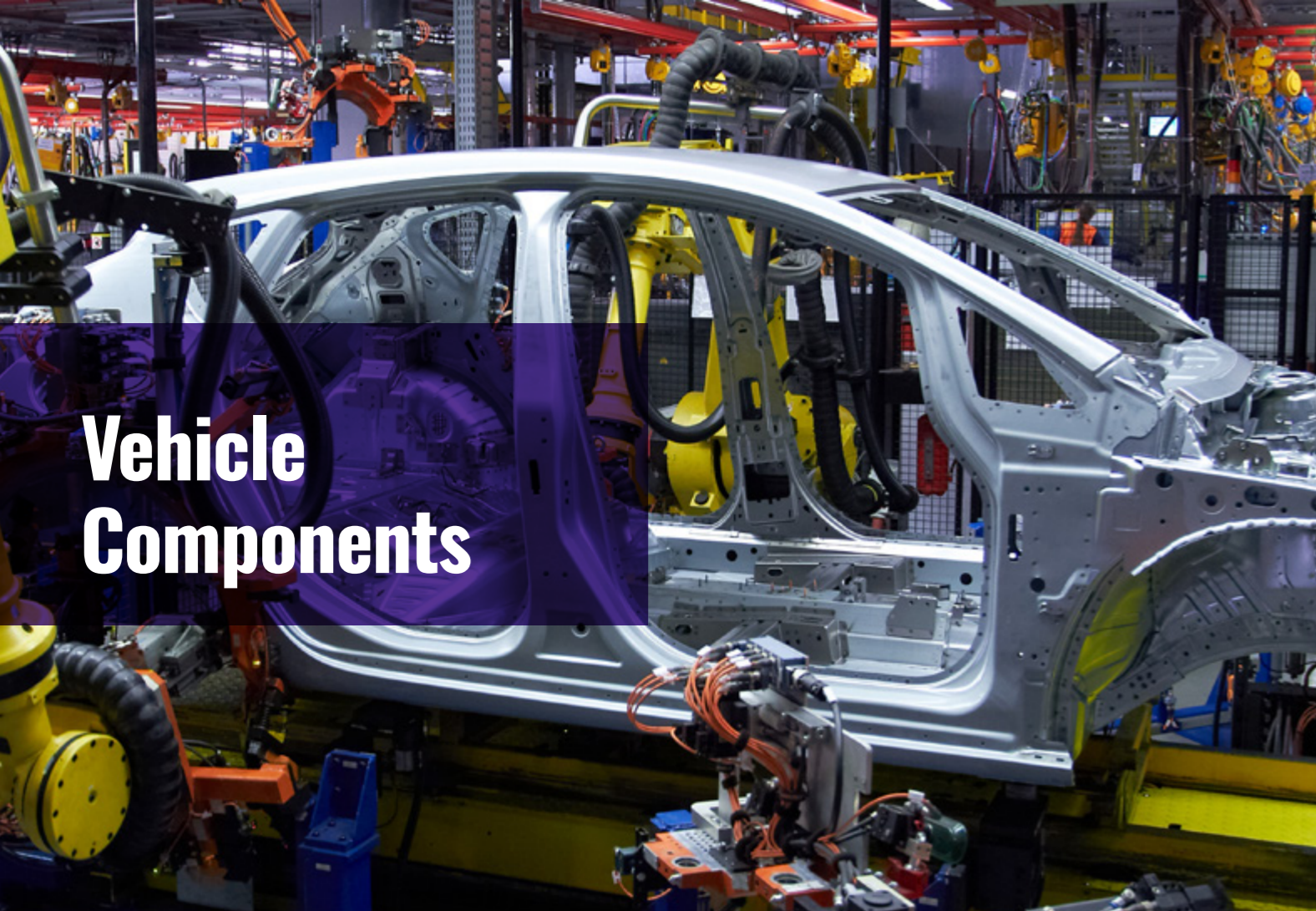
181-4126 Black

181-4127 White

181-4128 Red

181-4129 Green

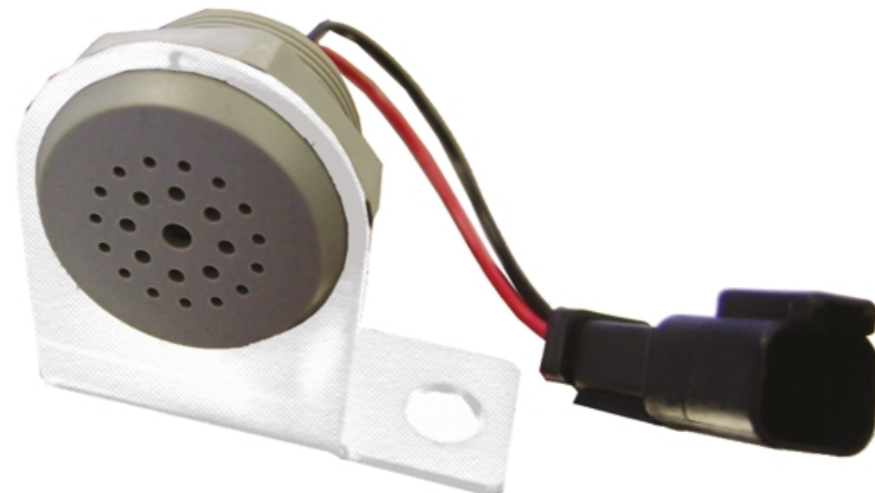




# Vehicle Components

## Round Piezo electric vehicle buzzer

- Round panel mounting buzzer designed for automotive use
- High output levels
- Internal circuitry for dc operation



**sonitron**  
SOUNDERS & SPEAKERS

805-5238

805-5229

**RS**

## 12 & 24V Vehicle Lamps

- Lamps with metal bases for cars



## Car Lamps

- OEM Quality
- Wide product range
- Reliable quality
- Number plate and side position lights
- Interior lighting and reading lights



**OSRAM**

**579-152** BA15s Base Clear Incandescent Car Lamps 12 V, 21 W

**OSRAM**

**579-219** SV8.5-8 Base Clear Incandescent Car Lamps 12 V, 10 W

**170-907** SV8.5-8 Base Clear Incandescent Car Lamps 24 V, 5 W

**170-913** SV8.5-8 Base Clear Incandescent Car Lamps 24 V, 10 W

**579-203** SV8.5-8 Base Clear Incandescent Car Lamps 12 V, 5 W

## Osram PARATHOM DIM PAR16 Dimmable LED Reflector Lamp, GU10, 2700K with Retrofit Pin Base

- LED retrofit lamp for vehicle interiors
- PARATHOM DIM PAR16 LED Reflector bulb
- Low energy consumption (4 kWh/1000h)
- Excellent light quality
- High colour rendering (narrow binning)
- Low maintenance
- Single optic design
- Alternative to high voltage Halogen lamps
- Compact design (full glass)
- Rated 3.7 W



**OSRAM**

**191-7714**

## Osram Automotive Incandescent Lamp

- Lamps with glass wedge bases for cars.
- Wide product range
- Reliable quality



**OSRAM**

**792-4297** 12V W2.1x9.5d





As cable assemblies become more complex, material quality in the harness is essential to the reliable functioning of vehicle systems.

# Cable accessories for harness makers

**Wire harnesses are becoming increasingly complex as the amount of on-board electronics grows and high-voltage electric systems in vehicles evolve.**

**HellermannTyton products made from high-performance materials are helping cable harness makers reduce the risk of failure through abrasion, corrosion or electro-magnetic interference.**

## Smart installation

Quality assurance starts with the cable ties in the wiring harness. The EVO9 Cable Tie Gun ensures that all cable ties are applied and cut flush at precisely the correct tension. Some ingenious engineering reduces the risk of repetitive manual stress on the operator whilst increasing the lifespan of the blade.



EdgeClips and SolidTack Cable Tie Mounts are the solution of choice for many vehicle engineers wherever holes or bolts are not available for fastening cables in the vehicle. EdgeClips are available in different geometries for securing bundles across, along or parallel to edges. Self-adhesive SolidTack Cable Tie Mounts are manufactured with a high performance acrylic-based adhesive specially designed to adhere strongly on low-energy surfaces. The initial adhesion is so strong that bundles can be fixed immediately.

## Ultimate protection

SA47-LA heat shrinkable tubing is designed to reliably seal connections of different materials. The use of a black adhesive in combination with the transparent tubing makes visual inspection of the seal quality possible.

HEGEMIP braided sleeving helps guarantee the smooth operation of in-car electronics, digital connectivity and infotainment systems by adding a robust layer of protection against electromagnetic radiation emitted by high-voltage-cables.

HelaTape Protect harness tapes are characterised by their resistance to ageing and temperature variety as well as their easy handling. They are the ideal protection against abrasion and vibration noise throughout the vehicle.

**Key product ranges:**

- EdgeClip Cable Tie Mounts
- SolidTack Cable Tie Mounts
- EVO9 Cable Tie Gun
- SA47-LA Heatshrink Tubing
- HEGEMIP Shielded Sleeving
- HelaTape Protect Harness Tapes



### Delphi Metri-Pack 150 Sealed Female Automotive Connectors

- Metri-Pack 150 sealed female automotive connectors with triple rib silicone rubber seals for environmental protection.
- These Metri-Pack 150 sealed female automotive connectors have a low energy, low voltage capability, a maximum continuous current of 14 A, offer a high resistance to chemicals and abrasion and withstand a wide temperature range of -40 to 125°C.
- Typical applications for these Metri-Pack 150 automotive connectors include critical low energy electronic underhood vehicle applications where environmental protection is essential.



- 801-0910** Delphi Metri-Pack 150 Series, 1 Row 4 Way Cable Mount Socket Connector, with Crimp Termination Method
- 801-0904** Delphi Metri-Pack 150 Series, 1 Row 3 Way Cable Mount Socket Connector, with Crimp Termination Method
- 801-0926** Delphi Metri-Pack 150 Series, 2 Row 6 Way Cable Mount Socket Connector, with Crimp Termination Method
- 801-0932** Delphi Metri-Pack 150 Series, 2 Row 8 Way Cable Mount Socket Connector, with Crimp Termination Method
- 801-0941** Delphi Metri-Pack 150 Series, 2 Row 10 Way Cable Mount Socket Connector, with Crimp Termination Method

### TE Connectivity 1.5 Superseal Series, Connector Housings - AMP Superseal 1.5

- Comprised of black 6.6 glass filled poly-amide
- 1 - 6 positions
- Plug housings for receptacle contacts, cap housings and tab contact variants
- Pre-assembled secondary lock
- Silicon rubber seals
- Panel or cable mount
- Temperature range of the 1.5 mm pitch superseal series is of -40 to +125°C
- Suitable for powertrain, security, and body & chassis systems



- 314-1198** TE Connectivity AMP SUPERSEAL 1.5 Series, 1 Row 2 Way IP66 Cable Mount Plug Connector, with Crimp Termination Method
- 136-1723** TE Connectivity AMP SUPERSEAL 1.5 Series, 1 Row 2 Way IP66, IP69K Cable Mount Socket Connector
- 314-1205** 282087-1 - TE Connectivity Male Connector Housing - AMP SUPERSEAL 1.5, 6mm Pitch, 3 Way, 1 Row
- 136-1724** 282087-1 - TE Connectivity Male Connector Housing - AMP SUPERSEAL 1.5, 6mm Pitch, 3 Way, 1 Row

### DT Series Receptacles

- IP68
- Wire-to-Wire Connection System
- Operating Temperature Range of -55 to +125



- 425-765** Deutsch DT Series, 2 Way Socket Connector, with Crimp Termination Method
- 425-632** Deutsch DT Series, 4 Way Plug Connector, with Crimp Termination Method
- 425-705** Deutsch DT Series, 6 Way Socket Connector, with Crimp Termination Method
- 425-709** Deutsch DT Series, 8 Way Socket Connector, with Crimp Termination Method
- 425-418** Deutsch DT Series, 12 Way Socket Connector, with Crimp Termination Method

### Helawrap Protective Tubing

- Quick and easy to protect and bundle cables
- Manufactured from Polypropylene (PP)
- Available in different lengths, colours and sizes
- Flexible design that enables cable to branch off at any point



- 647-8780** HellermannTyton Spiral Wrap, I.D 25mm 27mm Polypropylene Helawrap Series

### SMC M8 3-Pin Cable Assembly

- 25 Vdc supply
- M8, 3 pin connector



- 700-6294** 5m Cable

### ACW High Temperature Engine Harness Wiring

- High operating temperature up to 150°C
- Designed to function in the hot engine compartment environment
- Excellent mechanical strength
- Ideal for automotive wire handling
- ETFE material performance at reduced cost
- Smaller, lighter and more flexible
- High level of compatibility with other automotive materials



- 369-4787** TE Connectivity 100m ACW Automotive Wire 0.5 mm<sup>2</sup> CSA Red Flame Retardant, Low Smoke Density, Self-extinguishing, 50 V
- 369-4850** TE Connectivity 100m ACW Automotive Wire 1.5 mm<sup>2</sup> CSA Black Flame Retardant, Low Smoke Density, Self-extinguishing, 50 V

### Lapp ÖLFLEX CLASSIC 110 5 Core YY Control Cable

- Flame-retardant according to IEC 60332-1-2
- Oil-resistant according to DIN EN 50290-2-22 (TM54)
- Chemical resistance at room temperature



- 787-4072** Unscreened



**HARTING Han E Heavy Duty Power Connector Insert**

- 6 pole insert
- Screw termination from 18 AWG to 14 AWG
- Compatible with 6B size housing and hood
- Rated to 16 A and 500 V
- Mechanical working life of  $\geq 500$  mating cycles
- Contact resistance of  $\leq 1 \text{ m}\Omega$



114-8175 Male

114-8175 Female

**HARTING Han B Top Entry Heavy Duty Power Connector Hood**

- Metal or Polycarbonate bodied
- Single lever functionality for housing and hoods
- Hoods available in high or low types, and options of top or side entry. Bulkhead and surface mounting housings are also available with protective (metal or plastic) covers



114-8210 6B

**HARTING Han B Heavy Duty Power Connector Housing**

- Metal or Polycarbonate bodied
- Single lever functionality for housing and hoods
- Hoods available in high or low types, and options of top or side entry. Bulkhead and surface mounting housings are also available with protective (metal or plastic) covers



114-7885 6B

**D-sub Connector Backshell**

- Locking mechanism
- Halogen free
- RoHS compliant



**molex**

100-7440 Polyester Plastic Hood

**HARTING Han A Heavy Duty Power Connector Housing**

- Slim, space saving design • Robust diecast zinc construction
- Locking levers for a secure connection
- Range of mounting options and cable entry angles
- IP67 protection using seal screw



181-0729 3A

**D Sub Backshell**

- These FMK Series Metal Hood Backshells have a Large Inner Chamber and an Angled or Straight Cable Outlet
- This large amount of internal space is particularly suitable for D-sub connectors with special contacts
- The design of the FMK Series Metal Hood Backshell includes strain relief on the cable outlet
- The FMK Series Metal Hood Backshell is easy to assemble thanks to the catch spring system and pre-mounted locking screws
- The FMK Series Metal Hood Backshells can be used with engagement hooks and locking or knurled screws



**molex**

291-6187 9 Way

291-6193 15 Way

**Cable Mount 5P Industrial Power Plug**

- Glanded entry completely screwless industrial plug and connector, used to reduce installation time by approximately 60%
- Connection terminals strip conductors and provide contact as terminal is pushed home
- Integral pressure cable gland automatically gives strain relief and a watertight cable seal to IP44



530-6101 400 V

**Red Cable Mount Industrial Power Plug**

- Multi-Grip cable gland Quick-Connect screwless connection
- VDE tested
- IP44 rated



136-5698 32.0A, 415.0 V

136-5685 16.0A, 415.0 V

**Amphenol Socapex**

- RJ Field series RJ45 receptacles that allow ethernet Cat 5e connection for 10 BaseT or 100 BaseTX networks to be used in harsh environments
- These RJF ethernet receptacles are IP67 sealed, shock, vibration and traction resistant, have 4 position mechanical coding/polarization and are connected to an RJ Field plug using a MIL-C-26482 type bayonet coupling mechanism. No field cabling tools are required



448-1683 RJ45

**Phoenix Contact Socket Adapter**

- IP67 rated
- Made of premium materials to ensure this adapter lasts
- 60 V rated voltage
- Brilliant for off-site and on-site applications



721-1412 3 Pole

**Phoenix Contact Cable assembly**

- 100 mating cycles
- Operating temperature range -25 to +90 °C
- Surge voltage category II



802-6794 4 Core 300mm Cable

**Lapp Skintop M16 Cable Gland With Locknut**

- Double Lamella Gasket
- IP69 Protection
- Acid Resistance
- Chemical Resistance
- Temperature and Corrosion Resistance
- Operating Temperature Dynamic -25°C up to +100°C
- Operating Temperature Fixed -40°C to +100°C



405-8823 Brass



### Cat5 RJ45 Connector

- From Phoenix Contact, a series of push pull connector inserts from the QUICKON range of RJ45 connectors
- These RJ45 connectors have IDC fast connect terminals with copper alloy contacts. This professional range of RJ45 connectors all have diecast zinc housings (apart from stock number 921-0183) which has PA-GF housing material
- The RJ45 connector inserts are available in 4 and 8 position options have an external cable diameter from 5 mm to 8 mm. Part number 921-0102 has metal EMC shielding. Part number 921-0183 is also 1 Gbit/s



921-0127 Male

### Murrelektronik Free Hanging T Connector

- The Murr Elektronik T-coupler series comes with Parallel circuit Plastic housings with good resistance against chemicals and oils. The resistance to aggressive media should be individually tested for your application. Further details on request
- Operating voltage maximum 60 V AC/DC
- Operating voltage (only ul listed) 30 V AC/DC
- Protection IP67 inserted and tightened (EN 60529)



200-1816 5 Contacts

### Han D 10A Crimp Contact

- The Han-Com combination connectors are industrial connectors designed for providing power and signal contacts in one insulation body
- The Han-Q Series are connector inserts with a compact design, while the Han D/DD/DDD series are connectors built for high pin count interconnect applications



114-7986 Female

114-7970 Male

### HARTING Han-Modular Heavy Duty Power Connector Module

- Rated at 200A 1000V
- Over 500 mating cycles
- Operating temperature range -40 to +125° C



843-0070 Female

843-0077 Male

### Han PushPull, 0935 Cable Mount Connector

- Fully Shielded
- 360° shielding contact
- PushPull Technology



174-1812 Male

### Han B Side Entry Connector Hood

- These hoods and housings are compatible with appropriate inserts from the Han DD®, EE, E, ES, EAV, Com and modular series
- The 'compatibility' table associated with item types 1 and 2 details that relationship by indicating the specific Harting insert series, together with a stock number typical of each insert range



**molex**

844-3256 15 Way

### HARTING Han ES Press Heavy Duty Power Connector Insert

- Cage clamp terminations for quick and easy wiring Vibration proof design
- Multiple connection possibilities
- Can with used with wide range of hoods and housings



113-8681 10 contacts, 16A, Male

### Pepperl + Fuchs Screw Connector

- The Pepperl + Fuchs circular connector 4 female pin. It has M12 product has 250VAC/
- Screw terminal conne
- Metal locking



**PEPPERL+FUCHS**

203-0995 4 Contacts, M12 Connector

203-0988 5 Contacts, M12 Connector

### Festo NECU Series Connector Assembly

- Cable diameter 6 mm to 8 mm
- Terminal cross-section 0.14 mm<sup>2</sup> to 0.75 mm<sup>2</sup>
- IP67 Protection
- Ambient temperature -25°C to +85°C
- CE mark to EU directive low voltage devices
- RoHS compliant



**FESTO**

136-6867 For Use With Fieldbuses

### Siemens Data Acquisition Terminal Block

- Field assembly industrial Ethernet M12 connector
- Integrated insulation displacement contacts
- For 4-wire twisted pair FC installation cables (100 Mbit/s)
- Integrated strain relief
- Operating temperature ranges between -40°C and 85°C



**OSRAM**

666-5259





**RS PRO Alkaline AA Battery**

- Range includes: AA, AAA, C, D and PP3
- 1.5 V or 9 V
- Long lasting - last twice as long due to the purity of materials used within the battery
- Used in numerous everyday household, commercial and industrial items
- Ideally stored at room temperature, or a maximum of 25°C to maintain the battery life



917-6588 1.5V

**Energizer MAX Alkaline AA Battery**

- 1.5 V or 9 V
- AA, AAA, PP3, C and D Batteries
- 30% longer than previous Energizer MAX batteries
- Mercury free
- 10-year shelf life
- Guaranteed leak proof
- High energy density



914-5048 1.5V

**Panasonic BR2032 Button Battery**

- Higher the capacity the longer life time
- Non-Rechargeable
- Wide operating temperature range
- Resistant to vibration, shock and acceleration
- They have excellent reliability and a high capacity



597-419 3V

**Yuasa 12V Sealed Lead Acid Battery**

- Sealed Lead-acid (SLA)
- EUROBAT classification: 3 to 5 years
- Absorbed Glass Matt (AGM) technology with no free acid
- Gas recombination technology
- Good recovery from deep discharge
- Used in any orientation except continuously inverted



707-4966 8.5Ah



**Glass Battery Hydrometer**

- If you service automotive batteries, this highly precise battery hydrometer for measuring the state of charge of lead acid batteries when servicing automotive batteries is ideal
- It is the perfect instrument for measuring the specific gravity of battery electrolyte and it allows each cell to be individually checked at a glance.
- The high precision scale is in Baume degrees & specific weight with coloured sections for a quick reading.



196-8187 Glass Battery Hydrometer

**RS PRO Terminal Brush**

- This cleaning brush is designed to quickly and efficiently remove acid deposits from battery poles and terminals.



196-8244 RS PRO Terminal Brush

**Battery Lifting Tool**

- Two rubber covered plates grip the sides of batteries and will not slip off making easy work of lifting, carrying and replacing batteries in vehicles
- For use with batteries with widths between 120mm and 200mm



241-7652 Battery Lifter For Battery Widths 120 → 200mm

**1L Battery Filler**

- A distilled water dispenser for battery filling
- Automatically stops pouring when correct level is reached in battery cells
- Manufactured from oil, acid, and solvent-resistant plastic



196-8222 1L Battery Filler

**TestMate AUTO - 200Ah battery Tester**

- Tests the correct operation of the 12V charging/starting system of the vehicle
- Compact, light, and can be used in the workshop or at the sales counter
- Suitable for car, van, marine and all other 12V starter batteries up to 200Ah
- For all battery technologies: STD, AGM, GEL
- Easy to use: select battery type, capacity, then TEST



905-3652 TecMate TA20 Battery Tester For Various Battery

**Ansmann LCD Battery Tester**

- Can be used to monitor the 12V or 24V batteries of alternator and the charge controller
- Displays the currently measured output voltage of the car battery exactly to 0.1V
- With a bright, quality LED-display for voltage indicator
- IP20



843-0724 Ansmann 1900-0019 Battery Tester 12 to 24V



# ON Semiconductor and Mercedes EQ Formula E Team to create cutting-edge power solutions for vehicle electrification.

*With 9 global car brands going head to head, Formula E has evolved into much more than just a racing series - it's a battle for the future of the automotive industry. All of the competing cars are powered by pure electricity, paving the way for the cars of tomorrow.*



The 2018/19 season marked a whole new era for Formula E, with the introduction of the Gen2 car. With twice the energy storage capacity of the original Gen1 car, the vehicles can now sustain power from start to finish without the need for a mid-race swap.

Since the series' global debut in Beijing back in 2014 the electric car industry has progressed rapidly, reflected in the current cars, which have 250kW of power and are able to accelerate from 0-100km/h in 2.8 seconds with a top speed of 280km/h.

Of course, these cars need technology that can withstand high levels of shock, vibration and extreme temperatures. The more efficient the semiconductor device, the less power is lost to wasted heat, resulting in better mileage or miles per watt of energy. At the

same time, each team's engineers are aiming to make their cars' components smaller to save both weight and space.

This is why the Mercedes EQ Formula E Team, who will compete in the Formula E Championship for the first time 2019/20, has partnered with ON Semiconductor to develop their debut car.

ON Semiconductor is a leading provider of semiconductor-based solutions, and already has its technology utilized in the energy recovery pack that controls ignition and injection drivers of the Mercedes-AMG Petronas Motorsport race car, which has won four consecutive Formula One World Constructors' championships and five consecutive Drivers' titles.

Building on this, ON Semiconductor are now collaborating with the Mercedes EQ Formula E Team in developing next-generation electric powertrain innovations for cutting-edge performance and efficiency.

"Formula E cars see massive power transfers during their running so it's not a simple electrical problem," said Dave Priscak, vice president, global solutions engineering at ON Semiconductor. "Our comprehensive expertise that spans both mechanical and electrical engineering offers full solutions to the innovation of next generation electric vehicles. We look forward to continuing our work with Mercedes to further capitalize on this expertise in the development of technological advancements in power devices and electric vehicle technology."

ON Semiconductor power products and solutions include IGBTs, high voltage gate drivers, super junction MOSFETs, high voltage rectifiers, high voltage DC-DC, as well as wide band gap (WBG) developments in Silicon Carbide (SiC) and Gallium Nitride (GaN) that can be used in next generation electric vehicles. These technologies provide longer driving range between charges, faster battery charging times and better thermal management.



**Karcher High Pressure Washer**

- Ideal for use in any professional environment
- Shockproof casing protects against damage and dirt
- Fitted carry handle, retractable handle and cable support strap for comfortable use
- Can be used vertically or horizontally
- Excellent accessory storage
- 15 m high-pressure hose



**KÄRCHER**

909-0829 HD 5/16 CX Plus

**Karcher 62950900 Pressure Washer Cleaner**

- For use with AP 100/50 M Series Cleaner, HD Series Pressure Washer, HDS Series Cleaner, HWE Series Electric Flow Heater



**KÄRCHER**

763-9080 Karcher 62950900 Pressure Washer Cleaner For Various Karcher Series

**Spray Wash Cleaner - Plus**

- Safe, effective aqueous cleaners for use with spray wash equipment
- Will remove oils and greases
- The cleaner is a heavy duty grade designed for removing thick greases and carbon contamination
- Dilutes up to 10% (maximum)



**MYKAL**

434-9107 Mykal Industries 67290 Pressure Washer Cleaner for Spray Wash Equipment

**RS Pro Spider Type Oil Filter Wrench**

- High-quality, self adjusting
- Ideal for use in restricted access areas
- Gripping capacity 75 mm to 120 mm (2 15/16 - 4 3/4 in)



**RS PRO**

449-9599 RS PRO Oil Filter Wrench 75 → 120 mm

**Vehicle Oil Drain Pan**

- Constructed from black high impact polyethylene
- Integral ledge for draining filters etc.



**RS PRO**

400-1091 Oil Drain Pan, RS PRO Polyethylene, W 400mm



**SmartWasher®**  
Environmentally friendly parts washer

The SmartWasher®  
Bioremediating Parts  
Washing System is  
both self-cleaning and  
non-hazardous

- Non-toxic
- Non-polluting
- Non-corrosive



Be Smart  
GO "GREEN"





**Advance Tapes Cloth Tape**

- Very good long term resistance to outdoor exposure
- Strong
- Conformable to awkward shapes
- Good abrasion and puncture resistance
- Writable surface



**494-483** 50mm x 50mm, Black

**Advance Tapes PVC Electrical Tape**

- High breakdown voltage for excellent electrical insulation
- -5 to +70 °C working temperature for industrial and residential use
- Available in 10m, 20m and 33m rolls
- 12mm, 19mm and 28mm tape widths for various scale working
- Water Resistant
- UV Resistant



**494-354** 12mm x 20m, White

**3M 425 Conductive Aluminium Tape**

- 3M aluminium foil tape 425 can withstand a variety of moisture, weathering, UV and solvents in order to provide an excellent work life, indoors or out
- It provides an excellent heat shield in processes where high temperatures may damage adjacent surfaces and has a wide working temperature (-53 °C to +148 °C)
- The light reflective tape enhances lighting efficiency
- Excellent holding power while removing cleanly



**175-7814** 50mm x 55m

**HellermannTyton Nylon 66 Cable Tie Assemblies Kit**

- Consists of a range of moulded cable ties in nylon 6.6 and a tensioning tool, ideal for maintenance
- Operating temperature -55°C to +100°C
- Kit quantity 400



**255-2806**

**Rocol Lubricant Oil**

- Automatic lubrication unit for consistent, long term lubrication
- Precise lubricant discharge
- Up to 36 month discharge period
- Battery powered, electromechanical drive
- 1/4 BSP thread outlet
- For the lubrication of all types of ball, roller and plain bearings



**330-6200** 120 ml

**Automotive fuse kit for mini fuses**

- Handy compartmentalised hard case containing: 10 x 2A, 3A, 4A, 5A, 7.5A, 10A, 15A, 20A, 25A, 30A fuses



**219-9562** Littelfuse Automotive Fuse Kit

**RS PRO Screen Wash/De-icer**

- Used neat this screenwash / de-icer can quickly remove ice from windscreens and windows
- When diluted with up to four parts water it can be used as a screenwash whilst also protecting the water bottle in below-zero temperatures



**819-4071** RS PRO 5 L Can of Screen Wash De-icer

**F21 LED Torch BlackAAA**

- This device has strong aluminium construction, so you can be sure of its durability and resistance to impact. It emits a powerful light of 600 lumens (lm) and you can easily adjust the focus with a simple twist. Its specially designed domed lens ensures the torch produces a long-distance beam. It also features a strobe mode, making it more versatile.



**196-4196** RS PRO LED Torch

**RS PRO Battery Jump Lead**

- Battery starter cables or jump leads for jump starting automotive batteries when suffering from a discharged battery.
- Booster cables are offered in 150A and 220A versions: 150 A cables are for use with vehicles up to van size 196-8250 220 A cables are suitable for all vehicle sizes 631-9215



**631-9215** RS PRO 3.5m Battery Jump Lead, 220A

**Petzl Head Torch**

- Single button for quick and easy selection of brightness or light colour
- Ergonomic button, even with gloves
- Detachable, washable headband
- Compatible with mounting accessories that allow the lamp to be attached to any kind of helmet



**191-9529** 90 m Range

**Ratcheting Hand Crimping Tool**

- Robust positive lock provides greater mating assurance
- Direct vacuum pick-and-place; no capton tape needed
- Superior terminal polarization features prevent wrong terminal insertion
- Single lock 1 - 7 way, dual lock 8 - 15 way



**904-8278** 1.25mm CLIK-Mate Connector 26-28 AWG Crimp Terminals

**Ratcheting Hand Crimping Tool**

- Supports 22 - 0.3 to 16 mm2 wire size
- Suitable for crimping copper tubular terminals
- Features crimping indents conveniently marked with the wire size ranges
- Comfortable grip
- Provides two-hand grip in the final phase of crimping, increasing comfort and productivity



**624-1291** Non-Insulated Terminals

**Wire Stripper**

- Zinc alloy body and handle
- Medium carbon steel sheet for stripping mechanism
- PVC injection soft grip
- High carbon steel for the cutting and stripper knife blades
- Spring steel for auto-return tension spring
- Suitable for use with PVC, silicone rubber and others



**663-617** 165 mm



**94 Piece Mechanics Tool Kit**

- Offering various hand tools to make a comprehensive kit. The tools are of dependable quality. Designed for professional mechanics and serious DIY experts. ches



**734-8889** RS PRO 94 Piece Mechanics Tool Kit

**Steel Spanner Set**

- 26 Individual combination spanners
- Manufactured from high-quality, chrome-vanadium steel
- Hardened and tempered
- Supplied in handy storage case



**388-3690** 26 Piece

**Hydraulic Bearing Puller**

- High quality, forged steel provides superior reliability and service
- Precise hydraulic control allows fast, efficient and safe pulling
- Comes in a handy case which consists of hydraulic ram and nosepiece, main rod (200mm), thrust nut, extension rod (230mm), beam and bearing separator (4")
- 10-ton hydraulic power unit
- Portable



**349-7249** 75 → 105 mm capacity

**RS PRO Square Drive Dial Torque Wrench**

- Unlike conventional torque wrenches, dial torque wrenches, feature an analogue dial that is clear and easy to read both in SI and Imperial units. It also contains two indicators (main and slave) for accurate reading and setting of torque value required.



**575-649** 3 → 40Nm

**Cabinet Key**

- 6.5 mm and 8.1 mm square sockets
- 6.4 mm (in) AF Hex socket
- 9.8 mm triangular socket
- 9 mm winged key drive
- Hex to in square drive adapter
- 7 mm slotted blade
- Pozidriv screwdriver bit
- Compact size, easy to carry and store
- Multifunctional tool - convenient and easy to use
- Ideal for use with a range of applications



**439-3025** Zinc Alloy 5 way

**Telescopic Extendable Pick Up Tool**

- Extendable shaft of up to 65cm that's ideal for accessing hard to reach places
- Magnetic head for easy retrieval of magnetic objects
- Clip for easy storage in a pocket
- Chrome vanadium structure offering excellent corrosion resistance and durability
- Lift capacity of up to 3.5 kg
- Stylish black outer casing



**411-3122** 650 mm Chrome



**WE'VE GOT IT IN HAND**

**The RS PRO range of hand tools.**

**Everything you need to get the job done.**



[rspro.com/tools](http://rspro.com/tools)

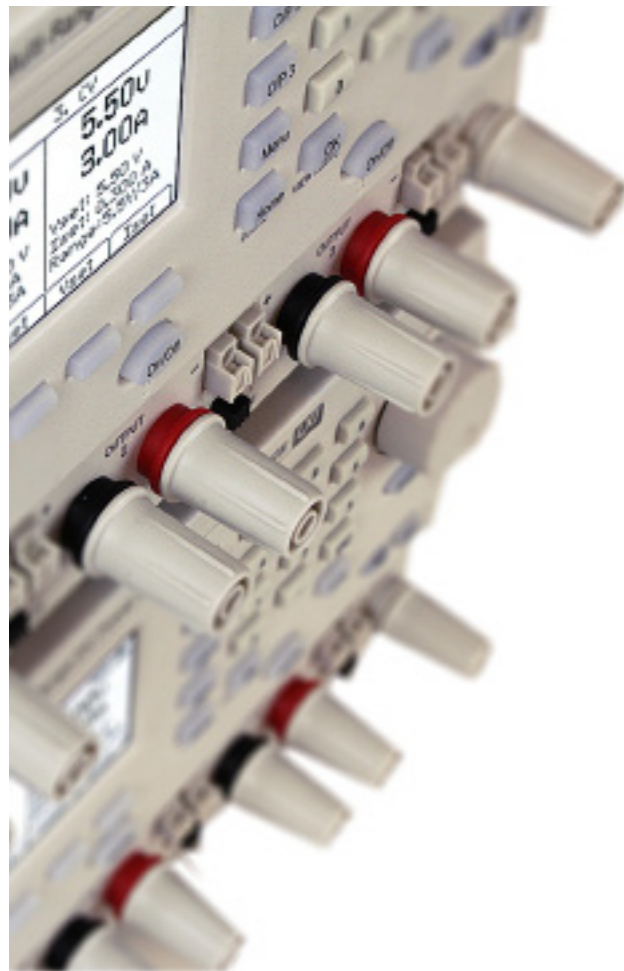






# Measurably Better Value

Powerful. Accurate. Affordable.



## Laboratory Power Supplies

- > 30w to 1200w Single and Multi channel PSUs for bench-top or remote control and system use.
- > Flexible electronic DC loads for general purpose applications.

## Waveform Generators

- > Analog and Digital (DDS) function generators with frequency capability up to 240MHz.
- > Dedicated pulse generators with true pulse capability.
- > True variable-clock arbitrary generators with up to four channels.

## Precision Measurement

- > Bench-top digital multimeters for dual display, system and logging.
- > Handheld and bench-top frequency counters up to 6GHz.
- > Innovative DC to 5MHz current probes for PCB tracks.
- > Precision component measurements.

## RF & EMC Test Equipment

- > Handheld RF spectrum analyzers with frequency upto 6GHz.
- > RF signal generators with frequency capability up to 6GHz.
- > EMC analyzers for power Harmonics and Flicker.

T & M Solutions Designed to meet your needs



### Multifunction Tester

- Automatically measures volts ac and volts dc with precise digital resolution
- Displays resistance to 1000 Ω
- Easy and accurate Open Jaw current measurement
- Continuity beeper



292-1230 T5

### I310S Current Clamp

- The i310s Current Clamp has been designed for use with oscilloscopes and digital multimeters for accurate nonintrusive measurement of AC, DC and complex waveform currents



401-422 19mm

### Handheld Digital Multimeter

- 6000 count LCD with 33 segment bargraph
- True rms (a.c.) measurement
- EN61010-1 safety standard compliance to Cat IV 600V & Cat III 1000V
- Resistance, continuity and diode measurement



394-4486 177

### Handheld Digital Multimeter

- User friendly interface
- True-RMS for excellent precision
- 6,000 count LCD display screen with backlight feature
- Safety category CAT III, CAT IV
- Safety Category and Voltage 600 V, 1000 V



161-1629 RS-9660B

### Handheld Digital Multimeter

- User friendly interface
- Compact design makes this multimeter ideal for working on the go
- Clear and precise 2000 count LCD display screen
- Safety category CAT III, CAT IV, 600 V, 1000 V
- Ideal for measurement of AC Current, AC Voltage, Continuity, DC Current, DC Voltage, Diode, Resistance



161-1625 RS-660

### Temperature Anemometer

- Integrated 40mm vane
- Display backlighting
- Timed mean value calculation
- Windchill factor calculation for outdoor areas



292-313 410-2 NTC, Rotary Vane 20m/s



# WHEN MAINTENANCE MATTERS



**RS PRO**