



MRO Safety Solutions

Helping you keep your workforce, equipment and site – safe and compliant.



**MACHINE
SAFETY**

The inset image shows a close-up of a control panel with various colored buttons (red, yellow, green, blue) and a red emergency stop button.

**ELECTRICAL
SAFETY**

The inset image shows a person wearing safety gloves using a handheld electrical testing device on a piece of equipment.

**SITE
SAFETY**

The inset image shows a yellow warning sign with a black silhouette of a person slipping and the text 'CAUTION WET FLOOR'.

**PERSONAL
PROTECTIVE
EQUIPMENT
(PPE)**

The inset image shows a person wearing a white face mask and yellow earplugs.



Supporting you every day, we're by your side



We carry more than 750,000 industrial and electronics products from over 2,500 leading suppliers. From the niche specialists to the big global suppliers, we stock almost every brand that you're likely to use. This includes our own-brand RS PRO, which offers more than 70,000 products.

With fast, easy access to the widest range of product solutions, reliable delivery, expert technical advice and procurement solutions to streamline your purchasing process, we'll help you keep things running smoothly.



Easy Ordering

Get free delivery on orders over R1000, no minimum order quantity required. Order online, via email and phone or visit our local trade counter.



Customer Support

Our team is on hand to support with all your queries – contact us via phone, email or speak to us on LiveChat.



Shop online 24/7

Access our website at any time on any device and shop at your own convenience. Plus you get instant access to technical datasheets that you can download.



Flexible Delivery Options

Locally stocked items can be delivered within 24-48 hours to major city centres. Globally stocked items are delivered within 4-6 working days.

How can we help you today?

Customer Services & Technical Support

Mon-Fri (8am -5pm)

Tel: +27 11 691 9300

Email: sales.za@rsgroup.com | africa@rsgroup.com



Contents

- 4 Article: Machine Safety in the Workplace
- 6 Safety door and interlock switches
- 8 Safety relays
- 10 Emergency stop buttons
- 11 Pushbuttons & pilot lights
- 12 Grab wire switches
- 14 Safety light barriers/curtains
- 15 Beacons & sounders
- 16 Schneider Electric
- 17 HPM
- 18 Article: Fluke 393
- 21 Insulation testers
- 22 Voltage testers
- 23 Clamp meters
- 24 Multifunction testers
- 25 Multimeters
- 26 Electrically safe Tools
- 28 RS PRO Facilities Maintenance
- 30 Article: Hygienic workplace
- 32 Kimberly-Clark Washroom
- 34 RS PRO Safety
- 38 Washroom supplies
- 39 Site safety
- 40 Safety signs
- 41 Working from height
- 41 Head & eye protection
- 43 Ansell hand protection
- 44 Respiratory protection
- 46 Foot protection
- 47 Workwear

WELCOME

Maintenance, repair and operations (MRO) or indirect procurement refers to products and solutions that are purchased infrequently, in small quantities across many different suppliers.

Personal safety is a crucial component of health and safety requirements, however, you must not ignore other critical safety areas, such as machinery safety, where legislative compliance is just as important.

Often considered separately and not given the same focus are electrical and general site safety, but all industrial sites must put procedures and measures in place to keep the workforce safe.

In this MRO guide, we've highlighted some of the product solutions from our extensive workplace safety range, which can help keep your workforce, equipment and site – safe and compliant.

Join the conversation



Terms & Conditions

To view our latest prices, charges and full terms see RS Conditions of Sale as set out online on the relevant website.

Published by: RS South Africa. Registered office: 20 Indianapolis Street, Kyalami Business Park, Midrand, 1684.

RS are trademarks of RS Group.
An RS Group Company.



SPOTLIGHT ON

Machine Safety in the Workplace

Machinery is commonplace within factories and industrial environments, but it comes with risks attached. The dangers posed by sharp edges, clamps, presses, hot surfaces and moving parts are clear, and operators must be protected from them.

Aside from training, operational precautions are essential for the safe use of machinery. The first approach should always be to remove hazards by installing physical guarding or protection. Clear warning signs should also be fitted.

The addition of machinery safety systems that use switches, sensors, and opto-electronic protective devices to monitor how the operator is interacting with a machine is a secondary way to mitigate risks when physical guarding is impractical.

The many types of industrial machinery in use perform different functions and appear to have little in common. But while the fine details may differ, the fundamentals of operating safety are much the same.

The following principles apply to lathe machines, grinding machines, presses, machine tools and packaging machines.

Top Tips for Machine Safety

- 1. Read the operating manual of any new machine carefully**, even if you are already familiar with the basics. Always follow the instructions given.
- 2. Always wear machine-appropriate personal protection equipment (PPE).** Closed toe shoes protect your feet from impact and falling items and also reduce the risk of slips. Full wrap goggles shield your eyes from debris that may escape the guarding. Cut resistant gloves can ward off injuries caused by exposure to sharp edges and blades. Read our guide to PPE here.
- 3. Only operate machinery for which you have received full training.**
- 4. Visually assess the machinery and its fixtures and fittings before use**, looking for any potential problems.
- 5. Tie back loose clothing and hair and remove any jewellery** to avoid the risk of entanglement.
- 6. Ensure that there are no slipping or tripping hazards** in the vicinity.
- 7. Ensure you know the location of the emergency stop (e-stop) button** if one is present and make sure you can access it immediately if needed.
- 8. Establish clear lockout procedures and install barriers** as appropriate, enabling the complete cessation of electrical current in emergencies or for maintenance. Presence-detecting light curtains will induce an emergency shutdown if they detect limbs in hazardous areas.
- 9. Make sure appropriate guarding (shielding) is securely installed** to protect operators and critical parts of the machinery itself from flying debris, sparks, moving parts or entanglement hazards. Cabling should also be appropriately guarded. Only use guarding that is free from its own hazards – e.g. sharp edges. Always switch off machinery when stepping away from it.
- 10. Fit easy-to-understand safety warning signs** in visible locations, for the benefit of anybody in the vicinity of the machine.
- 11. Ensure that a well thought-through cleaning and maintenance system is in place** so that workers involved in such tasks are not exposed to unnecessary risks.
- 12. Only fully trained technicians should conduct repairs and modifications.**

XCSE Solenoid Interlock Switches

- Key operated lock to allow authorised override of solenoid (key supplied)
- 2 LED indicators (orange/guard open, green/guard closed, key in locked position)
- Heavy duty metal compact style to IP67



263-3725 2NO/INC, Power to Unlock

Telemecanique Sensors XCSA Safety Interlock Switches

- 3 positive opening contacts as standard (on guard opening)
- A key operated lock enables positive locking of the guard
- Optional version with orange LED to indicate guard open/closed



397-2166 3NC, Key, Zamak

397-2150 2NC/INO, Key, Zamak

AZ Series Standard Safety Interlock Switches

- Individual coding available on request
- High level of contact reliability with low voltages and currents
- Not sensitive to dirty conditions by virtue of patented roller system

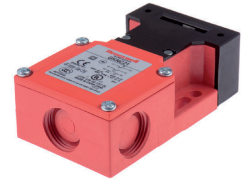


623-2988 1NC/INO, Key, Fibreglass

623-3054 2NC/INO, Key, Fibreglass

GKN Safety Interlock Switch

- Large wiring cavity and 3 cable entries
- No additional earthing requirements
- Head offers 4 actuation entries



Honeywell

015-3141 2NC/INO, Key, Fibreglass

D4NS Safety-Rated Interlock Switch

- Connector size is M20 (1-conduit)
- Standardised gold-clad contacts for high contact reliability
- Applicable to both standard loads and micro loads



746-7292 1NC/INO, Key, Plastic

HS5D Safety-Rated Interlock Switch

- Detects detachment of head for enhanced safety
- Compact dimensions with up to three contacts
- The head orientation can be rotated, allowing 8 different actuator entries



179-4733 2NC, Key, Plastic



Robust, cost-effective sensors to increase conveyor productivity



Increase product flow and ensure optimum time in automated storage & retrieval systems

In the world of automation, rapid and efficient production translates into profit while downtime equals lost opportunities. Critical and cost-effective conveyor sensors from Telemecanique Sensors can instantly improve production and reduce downtime.

Innovative roller conveyor sensors reduce downtime

The simple "position-and-click" installation of the XUY roller conveyor sensor is just the first feature that reduces conveyor downtime. By mounting the sensor between the rollers instead of on the side of the conveyor, you virtually eliminate the risk of sensor damage by items improperly positioned on the conveyor or next to the conveyor.



Conveyor sensors increase efficiency and improve safety

Conveyor solutions are as vast and varying as the number of products produced on them! When conveyor detection involves clear surfaces, shiny metal surfaces, or safety considerations, Telemecanique Sensors provides detection solutions that are equally as innovative and reliable.

With Telemecanique Sensors, it's "Simply easy...and safer!"



PSR Safety Relays

- Slim overall width means you can save space
- Fast installation and startup
- Force guided contacts make them a reliable choice



666-7022 Single Channel With 3 Safety Contacts

666-7053 Dual Channel With 6 Safety Contacts

666-7056 Dual Channel With 2 Safety Contacts 2 Auxiliary Contacts

666-7069 Dual Channel With 2 Safety Contacts 1 Auxiliary Contact

PNOZsigma Configurable Safety Relays

- Rapid installation: With push-in spring-loaded terminals
- Wiring work is reduced by 20 %: Contact expansion via connectors
- Simple configuration: Designation and position of the terminals is the same on all unit types: So connections and devices can always be assigned quickly for configuration, installation and diagnostics



015-5822 Dual Channel With 2 Safety Contacts , Automatic, Manual, Monitored Reset

015-6106 Dual Channel With 3 Safety Contacts 1 Auxiliary Contact, Automatic, Manual

015-6112 Dual Channel With 3 Safety Contacts 1 Auxiliary Contact

Single-Channel Safety Switch Safety Relay

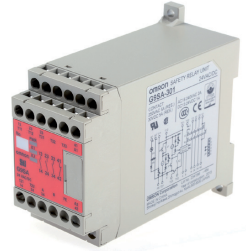
- To reduce the risk of injuries and minimise downtime
- Suitable as expansion relay for a safety PLC to increase the number of safe outputs
- 24V DC supply voltage for use in low-power applications



176-0035

Omron 24 V ac/dc Safety Relay

- Easy expansion connection
- Compact
- Used for most safety relay applications within the industrial automation industry



054-9609 Single or Dual Channel With 3 Safety Contacts 1 Auxiliary Contact

PSRmini 24 V dc Safety Relay

- Compatible with all important signal transmitters and safety-relevant systems
- Screw and push-in spring connection
- Up to 70% space saved



893-7745 Dual Channel With 2 Safety Contacts 2 Auxiliary Contacts

Schneider Electric 24 V ac/dc Safety Relay

- Single channel safety relay output provided with 3 N/O safety relay outputs plus 1 solid-state output PLC signalling
- Monitoring of single safety functions, providing an automated solution for use with applications such as emergency push stop buttons or switches
- Slim in design, meaning it can fit nicely even in space constraint spaces



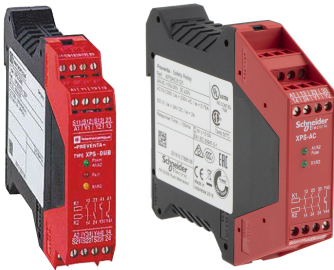
447-4477 3 Safety Contacts 1 Auxiliary Contact



Innovative solutions for machine safety

Covering all the safety functionality and scalability you need for your machines.

Schneider Electric provides an extensive and comprehensive range of machine protection equipment and safety certified products offers. In conjunction with our best-in-class industrial offers, we continue to innovate at every level to support you further with all your industrial application needs.



XPS safety relays and controllers

Preventa™ XPS safety relays and XPSMCM modular safety controllers provide flexible safety solutions for a wide range of machine safety applications.

- XPS: dedicated safety relay modules for specific functions e.g. limit switch monitoring, zero speed detection, timing, two-hand control, press control, and others.
- XPSMCM: modular and configurable safety controllers with a complete range of I/O and communication expansion modules.

Harmony safety emergency stops

- Upgraded waterproof and dust proof, ideal for severe environments, especially applications requiring high impact and vibration resistance.
- Combines simplicity of setup, flexibility, and robust construction.
- Range now includes E-stop with monitoring contacts, to avoid errors in installation.



Life Is On

Schneider
Electric

Harmony XALK Series Emergency Stop Push Buttons

- Easy to use "turn to release" functionality for easy reset once activated
- Light gray RAL 7035 base enclosure, with a yellow RAL 1021 cover colour and a prominent, bold red push button for easy identification to its function
- Durable Polycarbonate material, easy to clean and maintain with added durability for extended use (mechanical durability of 300,000 cycles)



- 795-1295 Twist to Reset, NC
- 609-4708 Twist to Reset, NO/NC
- 795-1309 Pull to Reset, NC
- 795-1302 Key Reset, NC

SSA EB1 Series E-Stop push button

- Rugged design which helps create easy installation with no assembly or individual wiring required
- Easy to install
- Operating Temperature Range -25 to +70°C



- 840-3056 Twist to Reset, NO/2NC

Stainless Steel Enclosed E-Stops

- 2NC/1NO contact configuration
- Conduit entry of M20
- High pressure hoses with detergents at high-temperature



- 826-4390 Twist to Reset, 2NC/NO, 240 V
- 826-4394 Twist to Reset, 2NC/NO, 240 V
- 826-4404 Twist to Reset, 2NC/NO, 240 V

ABB Panel Mount Emergency Button

- Modular Emergency Stop
- Mushroom 40mm
- Red - Non-illuminated



- 757-8897 Twist to Reset

XB5A Series Red Emergency pushbuttons

- Strong resistance to chemicals (cleaning agents, alcohol, oils & detergents) offering you the flexibility of area of use for your E-stops
- Greater vibration resistance alongside shake-proof terminal screws to prevent the E-stop loosening from its mounting / panel
- Simple, easy and quick panel mounting installation, saving you time and effort



- 123-8167 Turn to Release, 2NC
- 795-1289 Pull to Reset, NC

APEM Surface Mount Emergency Button

- Twist-to-reset action
- Non-illuminated
- Double-pole, positive break switch



- 417-5401 Twist to Reset, NC

Harmony XB4 Complete Pilot Lights

- Direct supply type will require separate purchase of appropriate BA9s incandescent lamp, neon or LED
- Transformer types are supplied complete with BA9s incandescent
- LED types are complete with integral LED light block



Schneider
Electric

330-8925 Red

330-8919 Green

609-5701 Yellow

RS PRO Panel Mount LED Pilot Lights

- Brighter than standard incandescent bulbs
- Very low power consumption
- Temperature range -25 → 55 °C



RS
PRO

763-7918 Green

763-7909 Red

Panel Mount Black Buzzer

- Compact design for short installation time
- LED illumination integrated with continuous/flashing light/siren
- Cable Terminal



ABB

835-2794 Round, 230V ac

SIRIUS ACT Push Button Head

- Self-holding function of the actuator when mounting
- Twist prevention integrated into patented holder design
- Stackable contact modules



SIEMENS

874-1712 Red

874-1689 Green

Eaton Mushroom Head Push Button

- This versatile pushbutton features a diameter of 94mm
- IEC418 tamperproof
- Durable, impact-resistant housing



EATON
Powering Business Worldwide

225-8166 NO/NC Momentary Screw

XAC-A Pendant Control Stations

- Pre-assembled pendants for common crane applications
- Shrouded, base-mounted, key-release "Stop" pushbutton
- Switching current 10A



Schneider
Electric

340-695 6 Button

746-8989 3 Button

609-4455 2 Button

Preventa XY2 Series Grab wire switches with E-Stop

- Switches incorporate positive opening operation contacts, the tripping of the switch being made with positive action
- The switch latches in the tripped position (N/C safety contact(s) open). The function of the N/O contact is purely for signalling
- Incorporates a reset button, which re-closes the safety contact(s), restarting of the machine must only be achieved by manual operation of a control device within the machine start circuit, remote to the trip wire switch



Telemecanique
Sensors

130-0872 30m, 2NC, NO

130-0874 2 x 100m, 2NC, 2NO

130-0885 70m, NC, NO

130-0887 70m, 2NC

IDEM Guardian Line GLS-SS Stainless Steel Safety Rope Pull Switches

- Switch mechanism will latch the instant the safety contacts open
- Positive break contacts
- Rugged integral sealing bellows mean they can be high pressure hoses



826-4117 100m, 2NO/2NC

826-4110 100m, 2NO/2NC, Straight

826-4108 100m, 2NO/2NC, Straight

826-4126 100m, 2NO/2NC, Straight

ER Cable Switch With E-Stop

- Long rope spans up to 80m means fewer number of switches required per application
- Tension indicator makes the system easy to set up and to maintain the proper rope tension
- IP67 (NEMA 6) enclosure enables the switch to withstand water wash down cleaning



OMRON

757-9106 40m, NO/2NC, Straight

Schmersal ZQ700 Cable Switch

- Size of cable entry is M20 x 1.5
- Release pushbutton
- Position indicator



SCHMERSAL

741-8672 10m, 2NC, Straight

Telemecanique Sensors XY2-CH Cable Switch

- Size of cable entry is PG13.5
- For machine tools, conveyers and handling applications
- Recommended distance between cable supports is 5m



Telemecanique
Sensors

742-3924 15m, 2NC, Straight

609-1939 15m, 2NC, Straight

Banner RP-LM40D Cable Switch

- Positive-opening safety contacts which are not dependent upon springs
- Heavy-duty die cast metal housing
- Suitable for demanding industrial environments



BANNER

839-4577 6m, 2NC, NO/NC, Straight

General Purpose Momentary Foot Switch

- Single pedal foot operated switches
- Durable and reliable with steel housing for long life
- Incorporates non-slip base pad and footpad



316-901 SP-CO, 3 A Contact Current, 250V Contact

Harmony XPEA Plastic Footswitches

- Available with or without trigger mechanism in 1 or 2 step configurations
- Large surface area of pedal assures stability of foot and operator comfort
- High and wide protective cover accommodates both large size and safety boots



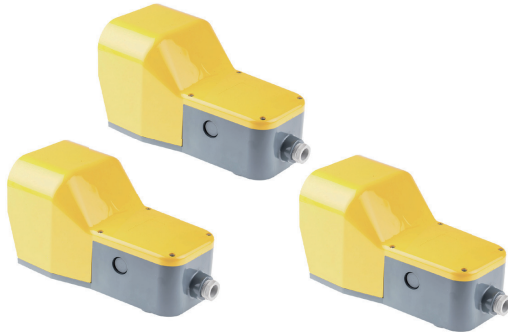
537-5270 Without cover, 2 NC + 2 NO

537-5315 With cover, 2 NC + 2 NO

537-5337 With cover, 2 NC + 2 NO

IPS Series Emergency Stop Foot Switch with Cover

- Snap action switch with cover
- Visible operation
- Electrically separated contacts



825-1720 Momentary Contacts, NO/NC

Light Duty Momentary Foot Switch

- Rust and corrosion proof reinforced polymeric construction for arduous use
- Non-skid base pad
- Adjustable strain relief clamp for various cable sizes



SIRIUS 3SE2 Series Emergency Stop Foot Switch

- Fixing holes for securing to the floor
- Latching or momentary-contact
- Cable entry type is M20 x 1.5



764-1073 1 Pedal, Maintained Contacts, 2NO/2NC



011-6906 SP-CO, 15 A @ 250 V ac Contact Current, 250V Contact

- Highly reliable and excellent quality.
- Automatic or Manual start
- IP65/67 rated



Telemecanique
Sensors

127-8298 46 Beams, 30mm Resolution

127-8305 16 Beams, 30mm Resolution

127-8312 8 Beams, 30mm Resolution

L4000 Light Beam Sender

- Colour LEDs provide in-situ information on operational status
- Numerous areas of operational use. IP67 rated for outdoor applications and sub-zero operating capability
- Nickel plated brass housing



SICK

701-2918 1 Beam, 10m Max Range

Preventa XU2S Light Beam Sender & Receiver

- Flexibility allows connection of up to 4 light beam devices which can protect a zone up to 1200mm high
- Automatic self-checking every 5ms
- Built-in muting function allows the light device to be inhibited by an external sensor



Telemecanique
Sensors

385-7578 1 Beam, 8m Max Range



Did you know?

Safety light curtains are also known as safety light barriers or safety light screens. These optoelectronic devices are used to detect people present in the vicinity of moving machinery. Light curtains can be used as an alternative to mechanical barriers and other forms of traditional machine guarding. A set of light curtains contains a transmitter head and a receiver head. A transmitter generates an infra-red light between the two heads which acts as a detection zone. A movement detected within the detection zone initiates the machine stopping procedure and automatically disconnect all hazardous machinery.

To reactivate the machinery, an operator has to press reset button that is positioned outside of the danger area. Some models are equipped with an auto-reset option that automatically starts machinery once the detection zone is free of obstacles. A response time of all light curtains is just a fraction of a second, it means that no other barrier type can compare to that.

Light curtains are great safety devices that are used to keep people safe around hazardous machinery which could cause them harm. They can help ensure user safety during routine operations like maintenance and repair.

Harmony XB5 Buzzer Beacons

- Bezel material plastic
- Mounting diameter 22mm
- Continuous or intermittent tone



Schneider
Electric

167-9011 90dB, Red, 24 V ac/dc, IP66, IP67, IP69

167-9014 90dB, Yellow, 24 V ac/dc, IP66, IP67, IP69

167-9015 90dB, Yellow, 110 V ac/dc, IP66, IP67, IP69

Klaxon Flashguard QBS Xenon Beacon

- The supply voltage is 12VDC/24WDC
- Ultra-low profile xenon
- Ease of installation with first-fix option on standard models



klaxon

309-5972 Amber

309-5764 Red

RS PRO Compact LED Beacon

- Providing excellent all-round visibility in all weather conditions
- x 4W LED provide a working life of more than 50,000 hours ensuring maximum reliability with minimum maintenance
- Fixing holes are directly accessible without needing to dismantle the unit



RS
PRO

907-5993 Amber

Werma BM 826 Incandescent Beacons

- The supply voltage is between 12VAC/12VDC and 240VAC/240VDC
- Bayonet lock fixing
- Optimised cap ribbing



WERMA

365-9734 Green

365-9728 Red

365-9740 Amber

Askari Compact White 32 Tone Electronic Sounder

- 32 tones, the tones are compatible with Roshni, Squashni and Flashni sounders
- Has a second tone for a two-stage alarm
- Easily accommodated and simple to install



EATON
Powering Business Worldwide

530-5990 9 → 28 V dc, 97dB at 1 Metre, IP65

e2s SON4 Sounder Beacon

- Automatic synchronisation on multi-sounder system
- 3-stage alarm
- 3 level of volume control



e2s
warning signals

192-9485 104dB, Red Xenon, 230 V ac, IP65

PKE IP67 Cable Mount 2P + E Closure Plug

- The Schneider Electric range of PratiKa Male straight cable socket suitable for numerous industrial applications.
- Available in 16 A.
- Snap-on fitting without stripping the wires, fast and reliable.
- Body with fast opening and closing system.
- Self-centring cable gland with integral cable clamp.

Life Is On | Schneider
Electric**219-8969** 16A, 200 → 250 V**PratiKa IP67 Blue Cable Mount 2P+E Industrial Power Socket**

- Female straight and sealed mobile sockets for cables, suitable for numerous industrial applications.
- Available in 16 A or 32 A.
- Snap-on fitting without stripping the wires, fast and reliable.
- Body with fast opening and closing system.
- Self-centring cable gland with integral cable clamp.

Life Is On | Schneider
Electric**498-3757** 16A, 230 V**498-3814** 32A, 415 V**498-3820** 32A, 415 V**Angled Industrial Power Socket**

- Female angled plug-in cable sockets suitable for numerous industrial applications.
- Available in 16 A or 32 A.
- Snap-on fitting without stripping the wires, fast and reliable.

Life Is On | Schneider
Electric**498-3836** 16A, 230 V**498-3858** 16A, 415 V**PratiKa IP67 Yellow Panel Mount**

- The Schneider PratiKa Wonder plug is a straight plug with operational current 16A for industrial use.
- It provides robustness due to rigid cover"

Life Is On | Schneider
Electric**211-0517** 16A, 100 → 130 V

Power Cord

- Integral 16 A rated lead
- Female to male
- Right angle orientation
- Schuko plug to Schuko socket
- 5 m - 25 m length cables*



116-108 10m

Power Distribution Unit

- Robust plastic, grey colour with black plastic end caps
- Built-in Type F German Schuko sockets (rotated 90°)
- Extra large space between sockets: 64 mm
- Choice of 1.5 or 3 metre power cords
- Increased touch protection**



123-7429 1.5m Cable

1.5m 3 Socket Type E

- Power strip extension with cord, equipped with a non slip tablet holder and has 2 usb type A inputs for charging mobile devices.
- With main on/off switch fitted with a 16 A circuit breaker
- 1.5 m braided wire power cord



238-7616



FLUKE®

Fluke 393 FC CAT III 1500 V True-rms Clamp Meter

Delivers Safe, Fast Measurements in 1500 V DC Environments

The Fluke 393 FC CAT III 1500 V / CAT IV 600V True-rms Clamp Meter with iFlex is designed for technicians who work in dc environments up to 1500 V: solar arrays, wind power, electric railways, data centers battery banks for uninterruptible power supplies.

The clamp will measure up to 1500 V dc, 1000 V ac, and up to 999.9 A dc or ac through the clamp jaw. The included iFlex flexible current probe extended ac current measurements up to 2500 amps.

This clamp has a thin jaw, giving you access to cables in crowded combiner boxes. Test leads are designed with your work in mind, and are also rated to CAT III 1500 V dc.

Fluke 393FC meets standard for photovoltaic panels (IEC 61730-1) and extends safe measurement range up to 1500 V DC.

Key Features & Benefits:

- Safe and accurate voltage measurement upto 1500V DC
- IP54 rating for dust and water making it ideal for work outdoors on solar arrays and wind power systems
- DC power measurement, showing readings in kVA
- Audio and Visual Polarity to ensure photovoltaic panels are properly installed with the help of an audio beep and a light to indicate correct polarity
- Visual Continuity that provides a bright green indicator light in the display for working in dark and noisy environments
- Logging, sharing and reporting of test results via Fluke Connect software

1 ENHANCED SAFETY WITH CAT III 1500V RATING

Unparalleled safety with World's first CAT III 1500 V/CAT IV 600 V clamp meter. Comes with 1500 V CAT III insulated test leads.

2 RECORD, ANALYZE, SHARE RESULTS WITH FLUKE CONNECT® SOFTWARE

Log up to 65,000 data points on the device and download with Fluke Connect.

3 INCREASE PRODUCTIVITY WITH FLUKE 393FC

Make DC power measurement quickly and accurately with a tool that does it all: V, A and Power (kVA). Ensure PV panels are properly installed with the help of an audio beep to indicate incorrect polarity. Visual continuity makes continuity testing easier in low-light situations.

4 RUGGEDNESS & RELIABILITY ARE INGRAINED IN FLUKE 393FC

Fluke 393FC clamp is sturdy with ingress protection (IP54) to support usage in outdoor environmental conditions. It also comes with a 25% thinner jaw than Fluke 37X Clamp meters, makes it easier and faster to take measurements in tight and overcrowded spaces. This new, improved design is durable, rugged and reliable and meets the stringent CAT III creepage and clearance requirements.



Shop the Fluke range at [RS Online](#)



**Take the trouble out
of troubleshooting.**

MPQ1000

Power Quality Analyzer

The Megger MPQ1000 Power Quality Analyzer is Class A compliant and rated CAT IV at 600V. It can be used for a wide variety of applications including substation monitoring, equipment and breaker tripping, load studies and balancing as well as for switchgear and component failure.

Some of its features include:

- Automatic CT recognition
- Automatic connection verification
- On-board data analysis
- SD card and USB stick support
- 1000 V ac and dc range
- Scope and DMM modes
- CATIV @ 600 V
- IEC61000-4-30 Class A compliant

Megger[®]
Power on

Megger MIT310A, Insulation Tester

- Meets the relevant requirements of EN61557, BS7671, HD 384, IEC 364 and VDE 0413 for applications in all aspects of electrical contracting, building maintenance, testing, inspection and servicing.
- 20mm LCD display with true analogue response
- Automatic 200mA fast continuity test on connection to the circuit



Megger.

516-7704 MIT310A

Megger MIT230, Insulation & Continuity Tester

Incorporates a range of safety and operation features in one of the smallest electrical insulation testers available. Its LCD offers a combination of digital readout and analogue display, with an analogue pointer response for evaluating circuit charge and discharge characteristics. Insulation testing to 1000 MΩ



Megger.

535-3191 MIT230

Fluke 1577, Insulation Tester

- Safety first. Connect the insulation tester then keep yourself out of harm's way by monitoring your test measurements remotely
- PI/DAR timed ratio tests with TrendIt™ graphs to identify moisture and contaminated insulation problems faster
- Incorporates VFD low-pass filter for accurate variable frequency motor drive measurements



FLUKE

512-2492 FLUKE -1577

Sefram MW series insulation tester

- Compact, robust and shockproof housing, with protective holster
- LCD display with backlight
- Measurement of TRMS AC voltages up to 600V DC



Sefram

219-3065

FLIR IM75 Insulation Tester

- Advanced Insulation Modes: Insulation Resistance up to 20 GΩ, PI, DAR, Earth Bond Resistance
- Multiple ranges of resistance insulation test levels available via rotary switch: 50V, 100V, 250V, 500V, 1000V
- Multi-color LED indicator with Compare Mode makes pass/fail determinations easy and visible



877-7118 1000V, 20GΩ, CAT III 1000V

RS PRO RS5500 Insulation Tester

- Large dual display with backlight
- Triple insulation voltage Test Ranges: 200 MΩ/250 V; 200 MΩ/500 V; 2000 MΩ/1000 V
- AC Voltage (40Hz to 400Hz)



123-1931 1000V, 2GΩ, CAT III 1000V

IVP-1 Non Contact Voltage Detector

- Tip glows red and the audible sounder activates when a voltage is detected
- Locates breaks in cables
- Detects blown fuses inside plugs or fuse holders



123-3247 100V ac to 1000V ac

Fluke T6 Electrical Tester with FieldSense Technology

- Measure voltage without test leads as we know working in electrical boxes jammed with wires can be challenging when you're trying to find a safe metallic contact point.
- Now with Fluke's T6-600 or T6-1000 with integrated FieldSense technology you can quickly and easily take measurements by sliding the open fork over a conductor to see the voltage level without the need for test leads



FLUKE.

146-2607 T6-600

146-2605 T6-1000

LED Voltage tester

- Dual Sensitivity
- LED light with 100,000 hour life
- Detects from 90VAC to 600VAC



FLUKE.

033-6328 CAT IV 600V

Gedore Non Contact Voltage & Magnetic Field Indicator

- Multi-functional, the VDE is a screwdriver, voltage finder and integrated magnetic field tester rolled all in to one. Users now have one tool to hand for checking and repairing magnetic pumps or valves
- Power-Grip and ergonomic handle
- Eliminates need to take switches and valves offline



GEDORE
TOOLS FOR LIFE

847-7739 Magnetic Field, Voltage

Fluke T150, LCD Voltage tester

- The two-pole voltage and continuity testers is very rugged and easy to use, with an ergonomic design that feels secure in your hand even when wearing gloves.
- The model offers a choice of functionality and user interface for added user convenience.
- 4 ways to indicate the presence of voltage – LED indicator, LCD display, audible tone or tactile feedback, always know if hazardous voltage is present



FLUKE.

750-8444 T150

Fluke PRV240 Proving Unit

- Single LED indicates functionality, making this unit a simple-to-use solution for verification of your test tool
- Compatible with both, high impedance and low impedance multimeters, clamp meters or 2-pole testers
- Provides a safe method to verify that your electrical test tool is operating properly before and after you conduct any live tests.



FLUKE.

881-2775 -10°C and 50°C

Fluke 320 series True-RMS clamp meter

- 400ohm resistance measurement
- True RMS AC voltage and current for accurate measurements on non-linear signals
- Operating temperature ranges between -10°C and 50°
- Integrated IR Thermometer provides fast non-contact measurements on panels, conduits, and motors
- Powerful work lights not only assist with clamping but are bright enough to serve as a primary work light
- FLIR Tools Mobile connects the FLIR CM78 to your compatible smartphones and tablets via Bluetooth



FLUKE

765-3660 400A ac, 400A dc CAT III 600V, CAT IV 300V

765-3658 400A ac, 600V ac CAT III 600V, CAT IV 300V

FLIR CM78 Bluetooth Clamp Meter

- Integrated IR Thermometer provides fast non-contact measurements on panels, conduits, and motors
- Powerful work lights not only assist with clamping but are bright enough to serve as a primary work light
- FLIR Tools Mobile connects the FLIR CM78 to your compatible smartphones and tablets via Bluetooth



848-1340

Fluke 773 Milliamp Process Clamp Meter

- Troubleshoot a live device without having to power down and possibly miss something going on in the process.
- Measure ¼ to 20 mA signals without breaking the loop
- Source/simulate ¼ to 20 mA signals and provide loop power
- Source/measure DC voltage to verify power supplies or I/O signals
- Best in class accuracy of 0.2%
- Delivers 0.01 mA resolution and sensitivity



FLUKE

669-3493 100mA dc

Megger DCM305E Leakage Clamp Meter

- 0.001 mA resolution
- Up to 100 A AC
- TRMS reading



Megger

179-4710 100A ac CAT III 300 V

Fluke 376 FC True-RMS Clamp Meter with iFlex

- Measure around awkward sized conductors with the Fluke 376 True RMS Clamp Meter with iFlex®, expanding your measurement range to 2500 A AC.
- With True RMS voltage and current measurements, the Fluke 376 can read up to 1000 V and 1000 A in both AC and DC modes.



FLUKE

914-5424 1kA dc, Max Current 1kA ac CAT III 1000 V, CAT IV 600 V

ICMA1 AC/DC Clamp Meter

- 6000 Count large-scale LCD display with backlight
- AC-DC current measuring capability up to 300 A
- Automatically detect DCA/ACA with AC True RMS reading mode



123-3256 300A dc, Max Current 300A ac CAT III 600 V

Fluke 1664FC Multifunction Tester

- Includes "Insulation Pre-test" that detects when appliances are connected to the system and stops the test
- Runs seven installation tests automatically in one sequence with a single connection through the auto test
- Retrieve stored results from anywhere
- Performs fast voltage measurement between L-N, L-PE, and N-PE using the mains cord



FLUKE

117-6667 50 V, 100 V, 250 V, 500 V, 1000 V, Earth Resistance Measurement With BLE, USB

RS PRO MT-6600 Multifunction Tester

- Test a variety of installation parameters
- 3.5 in TFT colour LCD display with 320 x 240 pixels
- Fast high current loop test



RS PRO

144-5338 1000V

Megger LRCD220 Loop Impedance & RCD Combined Tester

- Non-trip loop tester
- RCD testing from 10 mA to 1000 mA
- Auto RCD testing (LRCD220)



Megger MFT1835 Multifunction Tester

- 3-terminal earth test and stakeless testing for spike resistance measurement
- Full input protection and safety warnings when a hazardous voltage is present
- Internal memory and Bluetooth communication



Megger.

712-5749 Test Type 2 Wire 500V, RCD Test Type AC

Megger.

704-0487 1000V

FLUKE 117 Handheld Digital Multimeter

- VoltAlert Technology for integrated non-contact voltage detection
- AutoVolt feature for automatic AC/DC voltage selection
- LoZ: Low input impedance to eliminate stray voltage


FLUKE
616-1460 10A ac 600V ac 10A dc 600V dc

Keysight Technologies U1242B Handheld Digital Multimeter

- 10,000 - count dual display
- Overmold body casing
- Up to 0.09% basic DCV accuracy


699-7351 10A ac 1000V ac 10A dc 1000V dc

RS PRO RS14 Digital Multimeter

- Compact and handheld
- Digital 2000 count LCD display
- Functions measured: AC and DC Current, AC and DC Voltage, Resistance, Temperature Measurement


123-1938 RS14 Autoranging

Fluke 179 Handheld Digital Multimeter

- Built-in thermometer to measure temperature without having to carry a separate instrument
- Accurate true-RMS AC current and voltage plus frequency, capacitance, resistance, continuity and diode measurements
- EN61010-1 safety standard compliance to Cat IV 600V, CAT III 1000 V, CAT IV 600 V


FLUKE
394-4492 100kHz

DM166 Handheld Digital Multimeter

- DM166 Featuring IGM: A built-in 80 x 60 resolution thermal camera sensor visually guides you to an electrical problem
- Range of Measurement Options: Includes True RMS, VFD mode, and more
- The Test Tools You Need: Comes with high-quality test leads and a Type K thermocouple input (DM166 and DM64)


RS PRO IDM98IV Handheld Digital Multimeter

- Measures capacitance, voltage, electrical current and resistance with diode and continuity check.
- Has an LCD display where the measurement readouts can be viewed with 6000 count digital display and 62 segment bar graph.
- CAT IV rated for 600V and CAT III rated for 1000V.


873-2360 IDM98IV

168-1351

RS PRO 88 Piece VDE Approved Electricians Tool Kit

- This versatile tool kit has VDE certified screwdrivers and pliers, individually tested for use up to 1000 V ac
- The kit also contains additional extras including sockets, spanners, bit sets, extension bars, hex keys, insulated screwdrivers and VDE pliers in various sizes ensuring that you are covered for a range of applications



734-8885 88 Piece

RS PRO 1/2 in Insulated Ratchet Handle

- Featuring injection moulded Nylon 11 insulation that bonds with the tool to offer maximum protection and longer life
- The unique Nylon 11 insulation makes the tools a great choice when working in intense climates and the most difficult conditions



911-1471 300 mm Overall Length

CK VDE Plier & Screwdriver Tool Kit with Pouch

- A 10 piece VDE set of Pliers & Screwdrivers from CK that is supplied in a durable zipped storage wallet
- The kit contains Redline VDE pliers and Dextro VDE screwdrivers that guarantee a safe working limit of 1000 V
- An ideal starter tool kit or great to upgrade your tool box with premium quality CK pliers & screwdrivers



910-7239 10 Piece

KnipexVDE Cable Knife

- Insulated and tested in accordance with VDE, 1000 V
- No damage to wire insulation
- Sickle-shaped stainless steel blade with tip-mounted guide shoe



460-9538 180 mm Overall Length

Knipex VDE Insulated Chrome Vanadium Steel Combination Pliers

- Cutting edge 60HRC
- Chrome vanadium steel jaw
- Insulated with two-colour dual component handles



158-5300 180 mm Overall Length

RS PRO 08A Hexagon Nut Drive

- 150 mm stud clearance
- Each tool is injection moulded
- Nylon 11 insulation



911-1503 104 mm Blade Length

Sibille Anti-Slip RBCL0 Electrical Safety Mat

- Insulating mats insulates the worker from the ground to avoid him/her being crossed by electrical current in case of direct contact or pace voltage.
- The choice of the class must be determined according to the maximal nominal voltage of the network (IEC 61111 annex A).
- Simple use and maintenance rules must be respected (IEC 61111 annex B).



233-6861

Knipex Electrical Safety Mat

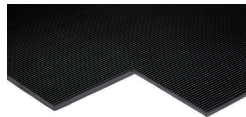
- For added protection when working live or close to live parts



665-4640 1m x 1m x 1mm

RS PRO Anti-Slip Electrical Safety Mat

- Ribbed Surface offers traction under foot
- Resistant to acid, oil and low temperature
- Ideal for use in front of switchboards and high voltage equipment



790-3007 1m x 1m x 6mm

Facom Electrical Safety Mat

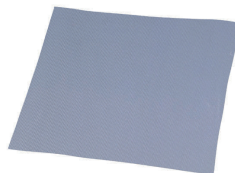
- Professional 3.2mm thick rubber insulating mat provides safety for operatives against electrical shocks
- Ideal for use in front of switchboards and high voltage equipment
- Tested to 20,000V



032-1130 600mm x 1m x 3.2mm

Bahco Anti-Slip Electrical Safety Mat

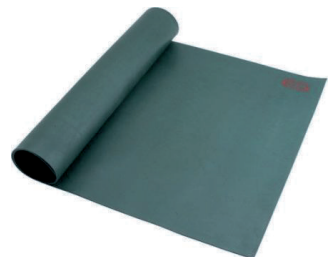
- Valid for use up to 5000V AC
- Protects against earth connection when operating live systems
- Complies with EN10204-3.1



688-0455 1m x 1m x 20mm

SAM Electrical Safety Mat

- Used to isolate the operator from conductive elements such as floors and walls



221-2736 600mm x 1m x 3mm

RS PRO Lockout Kit

- Designed for multipurpose protection, the kit features 24 different products for employee safety, all neatly stored in a tough carrying case
- The carrying bag itself has internal pockets for storage of the smaller products, a handle and shoulder carrier for ideal portability



862-5247 24 products

RS Pro Access Keypad

- Die-cast Aluminium
- Dimensions: 123(H)x77(W)x64(D)mm
- Backlight keypad



774-8162 20+1 PIN codes

RS PRO Dustpan and Brush Sets

- Manufactured out of high quality plastic this dust pan and brush set is an excellent choice light cleaning
- Soft bristles sweep up light dirt and debris with ease
- The rubber lip of the dustpan assists with the collection of dirt



898-8210 Green

898-8214 Yellow

056-0789 Red

056-0791 Blue

Press To Exit Button Stainless Steel

- Brushed stainless steel
- Flush mount
- 19mm brushed stainless steel button (flush)



741-8278 Stainless Steel

Plastic Silver Bucket With Handle

- This simple and effective cleaning caddy makes light work of carrying cleaning materials and equipment
- The hygienic and easy to clean carry caddy features two compartments to efficiently organise cleaning materials



790-6882 Silver

RS PRO All Weather Steel Padlock

- Laminated steel body for superior strength
- Hardened steel shackles for superior cut resistance
- Pin tumbler structure for great pick resistance test



827-4401 47mm



Your smart choice for Facilities Maintenance

Over 1,000 NEW products added to the range!

Discover to keep your business running, under one brand, at the price and quality you expect. Shop janitorial, cleaning, lighting, site safety solutions - batteries, tool kits, PPE and much more.



Find out more at rspro.com

Creating a **more hygienic workplace** doesn't stop at the washroom

Placing hand sanitiser and signage in breakrooms and common areas is a step in the right direction. But studies show it simply isn't enough to make a real impact. Targeting "hot spots" with hand and surface hygiene, is a key step toward reducing the spread of germs. Objects that are touched by lots of people throughout the day — such as doorknobs, elevator buttons and copiers — should be cleaned and disinfected daily in order to help break the chain of germ transmission.



Cleaning vs Sanitising vs Disinfecting – what's the difference?



Cleaning

removes germs, dirt, and impurities from surfaces or objects. Cleaning works by using soap (or detergent) and water to physically remove germs from surfaces. This process **does not necessarily kill germs**, but by removing them, it lowers their numbers and the risk of spreading infection.



Sanitising

lowers the number of germs on surfaces or objects to a safe level, as judged by public health standards or requirements. This process works by either cleaning or disinfecting surfaces or objects to lower the risk of spreading infection.



Disinfecting

kills germs on surfaces or objects. Disinfecting works by using **chemicals to kill germs** on surfaces or objects.* This process does not necessarily clean dirty surfaces or remove germs, but by killing germs on a surface after cleaning, it can further lower the risk of spreading infection.

* Non-Food Contact Surfaces

Clean AND disinfect frequently touched surfaces daily.

Step 1:

Clean the surface of commonly touched objects — use detergent or soap and water prior to disinfection.

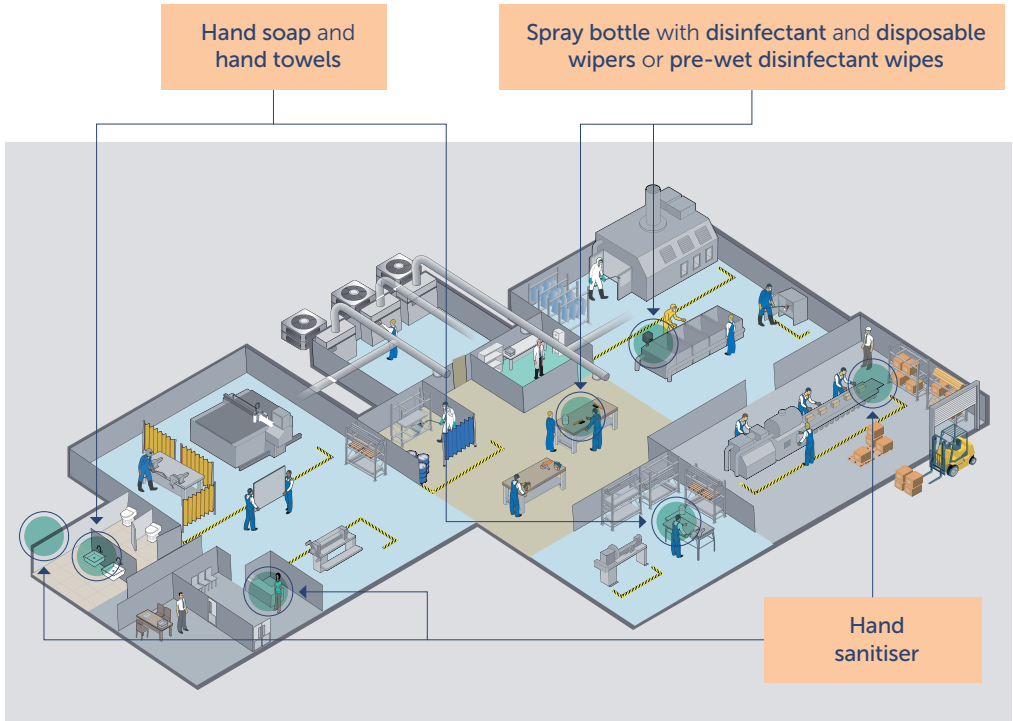
Step 2:

Disinfect the surface — use disinfectants approved by local regulatory authority. Follow manufacturer's instructions for application and dwell time.



Clean these hot spots to help reduce germs in manufacturing facilities

No matter which surfaces they come in contact with throughout their day, give your employees and visitors greater peace of mind by providing proven cleaning and disinfecting solutions to help break the chain of germ transmission.



In the span of 24 hours, the average **adult touches 7,200 surfaces¹** and **touches their face 552 times²**.



Nearly **95%** of surveyed adults did not wash long enough to clean the bacteria and germs from their hands.⁴



Research has shown that **water fountain spigots can have 19 times** the amount of **bacteria** as a toilet seat.³



It is recommended by the CDC that **PPE be worn** when using **chemical disinfectants** for cleaning.⁵

1. Zhang, N., Li, Y. and Huang, H., 2018. Surface touch and its network growth in a graduate student office. *Indoor air*, 28(6), pp.963-972

2. A frequent habit that has implications for hand hygiene Kwok, Yen Lee Angela et al. 2015. *American Journal of Infection Control*, Volume 43, Issue 2, 112 - 114

3. <https://www.nsf.org/consumer-resources/studies-surveys-infographic/germ-studies/germiest-places-schools>

4. Borchgrevink, C.P., Cha, J. and Kim, S., 2013. Hand washing practices in a college town environment. *Journal of environmental health*, 75(8), p.18; Hand Washing Practices in a College Town Environment, *Journal of Environmental Health*

5. [CDC.gov/coronavirus/2019-ncov/prevent-getting-sick/disinfecting-your-home](https://www.cdc.gov/coronavirus/2019-ncov/prevent-getting-sick/disinfecting-your-home)

6. Information contained here are recommended best practices, and do not supersede any recommendations or regulations mandated by local laws and regulations.

Scott

Kleenex

WYPALL

KIMTECH

Kimberly Clark Scott® Max Hand Towels Rolled

- 6 x 30½ m blue, 1 ply roll (1,824 m total)
- High capacity, super-compressed roll for less frequent refilling
- Made using our unique Airflex Technology.
- Soft, strong & highly absorbent, even when wet.
- Food Contact certified and Ecolabel certified
- Perfect for busy washrooms and food preparation areas.



887-2721 Blue 198 x 200mm

887-2727 White 198 x 200mm

Kimberly Clark Plastic White Wall Mounting Paper Towel Dispenser

- A smart, white, water-resistant wiper dispenser that is perfect for maintaining hygiene in laboratory, healthcare & General work areas. Easy to refill, keep Clean & maintain. Compatible with a large range of wipers & hand towels."



766-615 270mm x 380mm x 260mm

Kimberly Clark 12 rolls of 9996 Sheets Toilet Roll

- Scott® Control™ centrefeed toilet roll is designed to minimise risk where washroom hygiene and contamination control is a priority. With the twin roll enclosed system dispense single 2 ply toilet paper sheets, reducing toilet tissue run out and wastage and meaning you only touch the sheets you use



217-5592 12 Toilet Rolls x 833 Toilet Paper Sheets

Kimberly Clark White Plastic Toilet Paper Dispenser

- Choose the Aquarius™ twin centrefeed toilet roll dispenser for maximum hygiene and efficiency. The most hygienic toilet paper dispenser versus the competition - fully enclosed to protect rolls against cross-contamination - this robust lockable toilet roll dispenser is ideal for busy washrooms.



217-5591 464mm x 133mm x 274mm

Kimberly Clark Joy Kleenex Joy Foaming Hand Cleaner

- 6 x 1000ml CassKleenex® Botanics™ foam hand cleansers are designed to support hand hygiene standards and create an uplifting washroom experience. Safe for sensitive skin, our most luxurious hand soap ever, enriched with white lily and rose extracts, leaves users feeling soothed, revitalised and hands moisturised.



1234518



 Kimberly-Clark

PROFESSIONAL

Together we create
exceptional workplaces
by making them **healthier,**
safer, more productive.

Scott

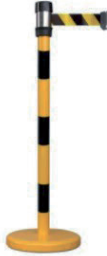
Kleenex

WYPALL
BRAND

KIMTECH

RS PRO Black & Yellow Safety Barrier

- Retractable belt stanchion with brake
- Belt colours: black and yellow
- Stanchion colours: black and yellow
- Can be used both outdoors and indoors*



174-5906 Retractable Barrier 2m

RS PRO Spill Kits

- Spill kits or spill response kits are an essential part of spill clean-up and usually contain absorbent sheets, pads, socks and waste bags that are used in the containment and clean-up of spills and leaks to avoid damage to equipment or avoiding injury through slipping.
- These types of kits can also be used for emergency response spill applications or as a precautionary measure*



771-6462 Chemical Spill Kit

771-6468 Oil Spill Kit

RS PRO Spill Control for Industrial Storage Tray

- This RS PRO spill tray can accommodate 60 litres of liquid and is versatile enough to be used across a wide range of spill management applications
- Made from polyethylene, the tray has a smooth finish that is easy to clean and lasts longer than other counterparts when exposed to the elements or harsh environments
- The polyethylene construction is corrosion-free and hard-wearing, perfect for industrial applications
- The moulded, low profile design and shallow depth of the drip tray makes it easier to catch drips, leaks and spills.



893-0384 60l

RS PRO Hazard Tape

- One roll has sufficient length to designate a large area
- Made from non-adhesive durable polyethylene which prevents tearing
- Bold characters on the bright background is designed to attract attention and provide a warning message that is clear and visible



866-074 Men Working

866052 Danger - High Voltage

RS PRO TE-W Thermal Imaging Camera

- It provides a long-distance and non-contact method of scanning and monitoring body temperature and identifying temperature abnormalities, especially in areas with high footfall volume where it may not be possible to check individual temperatures using a thermometer
- In addition to this, the black body technology provides an increased measurement accuracy of $\pm 0.3^{\circ}\text{C}$ which is essential for human body temperature measurement
- Thermal images are displayed on the large, 640x480 pixel TFT screen, producing superior image quality and making the results easy to read
- The high-quality device features a video output function which can be connected to a larger display screen for a more permanent, check point-like set up



201-2635 +20 → +50 °C



SAFETY IN NUMBERS. OUR RANGE OF PPE.

The huge range
of RS PRO PPE
products means
you'll always find
what you need to
stay safe.



rspro.com





Why safety is the number-one priority in manufacturing

Workplace accidents can be devastating to manufacturers, so a sensible safety strategy and collaborative relationship with suppliers is essential

Original Equipment Manufacturers (OEMs) are a significant part of the manufacturing sector, producing unbranded goods to be sold on by other companies. As you'd expect, when employees are in close proximity to automated machinery, moving parts and electrical devices, they must be suitably protected.

According to Jimmy Quinn, President of the Institution of Occupational Safety and Health (IOSH), workplace safety should be at the heart of a company's business strategy. "Safety and health are key to the success and sustainability of businesses. If you look after your people, the returns on this investment are extremely significant," he says.

"Safety and health are key to the success and sustainability of businesses. If you look after your people, the returns on this investment are extremely significant"

Jimmy Quinn, President, Institute of Occupational Safety and Health

There are plenty of reasons to persuade manufacturers to invest in health and safety – legislation, which if broken could lead to punitive fines, potential personal lawsuits from injured employees, not to mention the damage to a company's reputation.

Quinn says the COVID-19 pandemic has focused attention on health and safety for the whole workforce. "Around the world, our members have helped their businesses and the clients they work with implement measures which ensure the risks of virus transmission are managed.

"They are also managing the risks of mental health and wellbeing and, with many people working remotely, ensuring employees aren't at risk of suffering with musculoskeletal issues."

Contributors

Brendan Free

Industry Sector Manager, RS Components

Brendan has worked for RS for over 10 years, starting as a National Account Manager and moving to Industry Sector Manager in September 2015. He is responsible for the portfolio management of some of the UK's largest manufacturing, transportation and defence companies, helping customers understand and develop their MRO strategy.

Jimmy Quinn

President, Institution of Occupational Safety and Health (IOSH)

During a 24-year career in the British Army, Jimmy attained the rank of Warrant Officer and trained as a Health and Safety Advisor/Trainer. After leaving the Army he worked on a number of health and safety projects before joining Babcock International PLC as a HSE Trainer and Advisor before becoming a Health and Safety Manager for a large Middle East transport group. A Chartered Fellow of IOSH and a member of Chartered Institute of Building, Jimmy is also a Fellow of the Chartered Management Institute. He is also Vice-Chair of the IOSH Construction Group.

Read more news and articles on driving MRO efficiency at

**CONNECTED
THINKING**

rs-connectedthinking.com



Employee safety

Brendan Free, Industry Sector Manager at RS Components, agrees. “Workplace safety is extremely important in the OEM sector – the companies in this sector are ultimately responsible for the employees’ safety, so they need to take this very seriously,” he explains. “This is a sector with a number of risks, so it’s well worth the investment in safety equipment and training if it prevents a serious accident.”

“The OEM sector has a number of risks, so it’s well worth investing in safety equipment if it prevents a serious accident”

Brendan Free, Industry Sector Manager, RS Components

“Typical risks that employees at OEM manufacturers come up against are working with machinery and also electricity – if engineers are repairing equipment and the power is switched back on there could be serious consequences,” he adds. “As such, some of the most common safety devices we provide customers with are lock-out switches that stop colleagues from accidentally turning on a machine under repair.”

IOSH emphasizes the importance of good operational practices in maintaining a safe and healthy working environment. Safety should be designed in from the outset in all manufacturing processes, they say.

Quinn believes that one of the lessons from the pandemic has been the importance of having trained safety people. “As businesses learn to manage the risks of COVID-19, there has been growing recognition of the importance of the role occupational safety and health professionals play,” he says.

Free is a firm believer in working collaboratively with OEMs so that they can find solutions that actually meet their needs. “We try to work closely with companies to identify the specific risks that they face in their business and then offer safety equipment that protects their employees,” he says. “We have one customer who we provided with a particular voltage testing device, which they tried and approved, but they wanted to change one of the leads in the box to a higher specification. We were happy to reconfigure that through our trade counter because it meant the customer had the level of equipment they needed.”

Poor buying choices

Another area of workplace safety that Free and Quinn agree is a cause for concern is the desire to cut costs when purchasing safety equipment. Since the 2008 recession the IOSH has seen more companies making poor buying choices, particularly around Personal Protective Equipment (PPE) such as hard hats, gloves and boots.

“Quality is the number-one priority when it comes to safety equipment”

Brendan Free, Industry Sector Manager, RS Components

“When a company is purchasing a highly expensive piece of plant equipment, they will make sure it’s the real thing, that it meets safety standards,” Ho says. “But when it comes to gloves, hard hats, face masks and other smaller items, there is a tendency to go with the cheapest option. The wrong safety equipment could cost a life and end up hugely damaging a business.”

“We’ve seen plenty of situations where inappropriate safety wear has been responsible for terrible accidents.”

Free believes that the price of safety equipment should never be the only consideration. “It’s simple. Quality is the number one priority,” he states. “Cost is not irrelevant, but should only come into the equation once you’ve established that you are comparing between equipment of equal quality.”

“Our sector teams understand the industry as a whole, what’s happening in terms of legislation affecting safety and also the individual needs of particular manufacturers – that helps us collaborate with companies to find the safety equipment to fit their actual needs,” he adds. “We also work closely with equipment manufacturers to understand new technology so that we can make OEMs aware of better solutions as they come onto the market.”

RS PRO Automatic Steel 2.3kW Hand Dryer

- Their primary purpose is to supply a sustained burst of air while drying hands, arms, and face.
- These dryers are efficient, extremely robust, have an integrated brush motor that aids 30 m/s air velocity, touchless activation, and produces 23 seconds of drying time.



221-3571

Floral Flex Hand Cleaner

- Light floral aroma leaves hands smelling clean
- Hygienically sealed to eliminate the risk of cross contamination
- Delivers up to 1,625 hand washes



146-2802 500 ml Cartridge

Tork Plastic Black Counter Top Paper Towel Dispenser

- Our slim, hygienic Tork Xpress paper towel dispenser for the Countertop is the ideal dispensing solution for smaller spaces
- Ideal for low to medium traffic washrooms
- Cost-effective and efficient to use due to individual towel removal and easy topping-up



Think ahead.

202-8522 116mm x 218mm x 323mm

Scott® Xtra Hand Towels

- 3600 Sheets
- One clip of large multifold paper towels contains 240 Z-fold hand towels.
- Efficient, large folded paper towels for reliable everyday hand drying.
- Efficient and effective hand drying that creates less waste thanks to the Airflex™ Technology in these paper hand towels.



161-2535 315 x 200mm

Office First Aid Kit

- The W Sohngen wound cleanser sterile sachets made of non-woven tissues, which are saturated in a wound cleansing liquid
- The tissues are packed in a well-sealed foil, which prevents leakage and guarantees sterility.
- Intended for mechanical cleansing of minor wounds when clean tap water is not available.


233-6793
Break Glass Call Point

- Green MCP, double pole, surface mounted with glass
- Break glass operation
- Unique plug and play concept saves installation time


Accident Report Book

- Accident book has a total space for 53 incidents to record on A4 book
- Quick and easy to record accidents
- Folder includes useful guidance notes for completing and storing accident records


513-6946 Emergency Release Call Point

787-3694 A4

Briton Fire Door Push Bar

- Suitable for single doors up to 2500mm high x 1300mm wide
- Self-handed- will suit both left and right handed doors
- Additional security provided by anti-thrust device to prevent leverage from socket


187-7160 2-Point

Plastic Fire Exit Right Non-Illuminated Emergency Exit Sign

- Green/White
- 150 mm X 300mm



Plastic Road Traffic Sign

- Shatterproof
- PVC



370-1526 Fire Exit Right



261-1006 H450 mm W450mm

Red Safe Conditions Label

- 75 mm x 55mm
- Vinyl



Electrical Safety at Work Safety Wall Chart

- Charts withstand grease and dirt
- Wipe clean easily
- Material – 0.7mm Semi-Rigid PVC except where stated



434-2033 Pack of 5



763-2121 600 mm x 420mm

CCTV in Operation Sign

- Environmentally friendly and durable
- 1.2mm Polypropylene



Danger Live Electrical Equipment

- Dual-message sign to warn of live electrical equipment and a mandatory message for safe working or faults



763-1516 300 mm x 400mm



763-1711 150 mm x 300mm

Facom Carabiner Stainless Steel

- Stainless steel construction with excellent corrosion resistance
- Quick and easy to attach or detach tools and other equipment
- Perfect for working at height to reduce injury and damage or loss of tools



910-3350 60mm

Ergodyne Plastic (Buckle) Tool Lanyard Hard Hat Attachment

- Comfortable high stretch elastic material
- Easily attaches to hard hats and other headwear
- Quick connect clamp attaches securely to fabric



151-2985 0.9kg Capacity

Bahco Polyester Tool Lanyard

- Maximum work-load sew-in warning tag
- Fully extended length of 120cm
- Non-removable carabineer



767-3245 3kg Capacity

Knipex Tethering System Set

- Content includes: x1 tether, x3 adapter straps and x2 carabiners
- Reliably prevents the tool from falling
- Prevents loss of the tool and damage



136-7458 Hook-on Lanyard Set

Nylon Tool Lanyard Wrist Strap

- Fabric webbed black toolyards with PVC fastening buckle
- Prevents tools from being dropped when working at height or in hazardous situations
- Adjustable barrel lock for attaching tools



Tape Measure Trap

- 1200D and 600D polyester main material
- Hook and loop straps secure tape measure inside trap for safe and easy tethering
- Zinc-plated cast alloy D-Ring



707-7293 Small/Medium



151-2957 0.9kg Capacity

Uvex Safety Goggles Ultravision 9301

- Features a comfortable and ergonomic design and offers unrestricted side visibility.
- This flexible wide-vision goggle is also suitable for use as overspecs and is available with cellulose acetate or polycarbonate lenses, as welding safety spectacles or with a flip-up face guard.
- Reliable UV 380 protection.
- Ultravision.



JSP Black Short Peaked Safety Cap

- Stylish baseball cap design
 - Unique angled adjuster allowing for one-handed size adjustment
 - One size fits all - cap can be adjusted from 53cm to 64cm diameter
- HDPE



uvex

185-3495 Clear Lenses

JSP

824-5425 HDPE Protective Material

Uvex PHEOS Guard S Anti-Mist UV Safety Glasses

- With its modern, fashionable looks, the uvex pheos is a good-looking accessory at work
- The heart of the glasses is the duo-spherical lens that does not just offer a wide field of vision, but is also particularly scratch-resistant
- Features an anti-fog interior thanks to the high-quality uvex supravision coating technology.
- Anti-Mist UV



RS PRO Navy Standard Peak Bump Cap

- From RS PRO, comes a high-quality navy bump cap. Manufactured to industry standards and featuring an innovative design, these bump caps are a fantastic part of PPE (personal protective equipment) which can be utilised across many applications providing protection in areas where there are risks of obtaining a minor head bump or laceration on the head.



uvex

195-1557 Grey Polycarbonate Lens, Vented

RS PRO

171-6850 ABS Protective Material

3M SecureFit 400 Anti-Mist UV Safety Glasses

- Anti Scratch / Anti Fog, Grey Lens, comprise of a rimless lens and wide flexible temple arms for solid side protection and popular to be used in combination with Ear Muffs.
- Temples also feature 3M™ Pressure Diffusion Temple Technology (PDT) which allows the safety spectacle temples to naturally adjust to individual's head sizes giving wearers a secure and comfortable fit.



3M PELTOR 4800AF Anti-Mist Safety Goggles with Clear Lenses

- This classic safety goggle protects the worker from splashing liquids and dust.
- The safety goggles have an optical class 1 and the lens includes an anti-mist coating for a clearer view, and also features an interior ventilation system that reduces exposure to liquid droplets.
- These goggles are suitable for a number of applications and are essential eye equipment for keeping safe in certain hazardous environments.



3M

824-5428

3M

465-9331

Ansell Edge Black Polyurethane Coated Polyester (Liner) Work Gloves

- Excellent dry & wet grip enhance dexterity and reduce hand fatigue
- High-visibility cut liner acts as an indicator for when glove is cut as chemical protection is compromised


Ansell HyFlex 11-840, Black Nitrile Coated Nylon Work Gloves

- HyFlex 11-840 Nitrile Foam Glove Extreme durability and superior fit
- The ultra-thin FORTIX™ nitrile foam coating (patent pending) lasts up to three times longer than comparable coatings
- Provides enhanced dry grip and is 20% more breathable than earlier formulations


Ansell
181-3323 Size 8

181-3325 Size 9

181-3326 Size 10

Ansell
791-7514 Size 8

791-7523 Size 9

791-7526 Size

Ansell Alphatec Green Nitrile Coated Work Gloves

- Excellent dry & wet grip enhance dexterity and reduce hand fatigue
- High-visibility cut liner acts as an indicator for when glove is cut as chemical protection is compromised


Ansell Hyflex 11-501 Blue Nitrile Coated Kevlar Work Gloves

- Cut level 4 glove
- Superior wearer comfort and flexibility
- Heat and molten splash protection
- Versatile use


Ansell
179-3085 Size 8

179-3086 Size 9

179-3087 Size 10

Ansell
667-9775 Size 8

667-9778 Size 9

667-9772 Size 19

Ansell Alphatec Black Nitrile Coated Nylon Work Gloves

- 5 gauge seamless nylon liner
- Retains minimal heat, reducing perspiration
- Excellent grip wherever chemicals, oil and grease are present
- Liquid proof glove
- Safety cuffs
- Colour edging for size identification


Ansell HyFlex Reusable Gloves

- Reusable gloves are black/dark blue in colour, high-quality, nylon material, polyurethane-coated, general-purpose gloves.
- This extremely thin glove acts almost like a second skin and offers outstanding comfort, fit and sensitivity for the most delicate handling.


Ansell
749-7066 SIZE 8

749-7060 Size 9

749-7079 Size 10

Ansell
713-4264
713-4276

3M 6000 Full Mask Respirator

- These full mask respirators are a reliable and convenient solution to potentially hazardous work environments.
- Highly versatile, the masks can be used wherever there is a danger of harmful particulates, vapours or fluid splashback.
- The mask features full-face coverage with a unique center adapter to direct exhaled breath and moisture downward.



286-7164 6700 / 800 / 900

3M HF-800 Half Respirator Mask

- The world's first 4-way airflow filter system used in a reusable half-mask respirator that offers simple, comfortable and offers effective protection.
- Protection against particulates and a range of gases and vapours is only possible when used with approved 3M™ Secure Click™ cartridges and filters.
- Suitable for a broad range of industrial applications, the innovative comfort features help to ensure that the respirator is worn consistently over long periods.



190-1914 HF-803

3M 6500 Half Respirator Mask

- This reusable half face respirator mask helps to provide protection against particulates, gases and vapours when used with an approved cartridge or filter.
- It's vitally important when in an environment that has harmful gases to uphold your safety and health.
- Reusable as the cartridges and filters can be exchanged or disposed once used to capacity.



815-4168 6500

3M Speedglas 9100 FX Flip Up Welding Helmet

- Easy to operate and maintain.
- Has multiple adjustments for highest comfort on Shield and head band
- Can be used together with many Reusable and Maintenance Free Respirators for welding.



218-0762 9100

3M 7500 Half Respirator Mask, Medium

- Ready made kit with a reusable half face respirator mask and an A2P3 filters helps to provide protection against organic vapours and particulate hazards.
- The 4277 respirator mask features twin lightweight filters, which can be specialised to suit your individual needs.
- Fitting the respirator is easy with the head cradle with two neck straps.



666-7696 A2P3 R Filter

FT30 Bitter Testing Kit

- 3M Qualitative Fit Test Kits, Sweet (FT10) and Bitter (FT30). Each kit includes: One hood & collar assembly, two nebulisers, one 55ml bottle of sensitivity solution, one 55ml bottle of test solution (Replacement bottles of test solution are available)
-
-



448-1784 Kit

3M PELTOR Optime III Ear Defender with Headband

- Designed for use in extremely tough and noisy environments.
- Provide high levels of attenuation, particularly with sound dominated by low frequencies.
- Combine comfort and wearability with functionality for improved efficiency within your workplace operations.



3M Peltor™

449-6499 33dB

3M PELTOR X3A Ear Defender with Headband

- Offer the perfect blend of Peltor™ standards through an attractive, straightforward design.
- Combine comfort and wearability with functionality for improved efficiency within your workplace operations.
- The soft wide cushions are made from an innovative foam that has great energy absorption and helps to reduce pressure around the ears and improve comfort.



3M Peltor™

778-5225 33dB

3M E.A.R Soft Yellow Neons Uncorded Disposable Ear Plugs

- These E-A-R soft disposable earplugs are a fast and effective solution to hearing protection in the workplace.
- They are made from a slow expanding foam, which helps with providing low pressure inside the ear canal creating a comfortable and secure fit.
- The high-visibility yellow neon colour allows the user to locate them when working or be aware when someone is using earplugs, and may have advantages in food preparation areas where quality control is essential.



3M E-A-R™

358-4141 36dB

3M PELTOR Optime III Ear Defender with Neckband

- Specifically designed for heavy noise as they combine effective protection with the ultimate comfort.
- The soft wide cushions are made from a foam that has great energy absorption and improved comfort.
- The safety of the Optime™ III is based on the innovative double cup technology, which minimizes resonance inside the capsule and provides maximum high-frequency insulation.

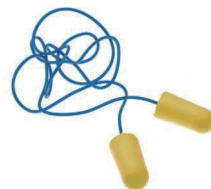


3M Peltor™

449-6528 35 Db

3M E.A.R Soft Yellow Neons Corded Disposable Ear Plugs

- These E-A-R soft disposable earplugs are a fast and effective solution to hearing protection in the workplace.
- They are made from a slow expanding foam, which helps with providing low pressure inside the ear canal creating a comfortable and secure fit.
- The high-visibility yellow neon colour allows the user to locate them when working or be aware when someone is using earplugs, and may have advantages in food preparation areas where quality control is essential.



3M E-A-R™

385-1687 36dB

Helly Hansen Oxford Black Composite Toe Capped Unisex Safety Boot

- Provides durability & comfort with a wide, roomie fit & soft, plush underfoot cushioning.
- The metal free composite toe cap & puncture resistant plate protect you from job site hazards & nubuck leather & Waterproof membrane keeps you warm, dry & comfortable.
- Primaloft insulation & YKK zipper complete this Winter work boot.



216-7952 UK 7.5, EU 41

RS PRO Honey Steel Toe Capped Mens Safety Boots

- If you need high-quality footwear for work, turn to these Honey safety boots from RS PRO.
- They feature steel midsoles and toe caps to protect your feet from water, heat and injuries from penetration by sharp or pointed objects.
- These boots have honey-coloured premium nubuck upper and mesh lining to make them breathable and ethylene-vinyl acetate (EVA) cushioning and soles to provide you with heel energy absorption.



739-7856 UK 10, EU 44

RS PRO Black Fibreglass Toe Capped Womens Safety Boots

- Introducing fibreglass toecap safety boots from RS PRO, a range of high quality 100% non-metallic safety boots ideal for use in environments that require protective footwear.
- These lightweight and comfortable boots feature a water repellent smooth black design with a protective fibreglass toecap
- For enhanced protection, the boots feature a composite anti-penetration flexi-midsole that protects the foot from any sharp hazardous objects penetrating from underneath.



201-1572 UK 5, EU 38

8888 Blue Disposable Visitor Shoe Cover

- Composition: polyethylene, welded blue
- Thickness : 20µ (+/-10%)
- Size : 36cm x 15cm (+/-10%)



205-9685 One size

DeWALT Cutter Mens Black Toe Capped Safety Trainers

- Traditional steel toe cap trainers to protect your feet in hazardous environments but are designed for comfort.
- The mesh and leather upper ensures they remain lightweight, flexible and give you that casual style look and also make you feel like you are just wearing normal trainers.
- The padded collar and tongue ensure these cutter safety trainers are comfortable to wear and also have an anti-bacterial comfort inner sole.



797-5529 UK 10, EU 44

Reldeen Black/Blue Insole

- Features a polyurethane injected foam insole for use with any footwear, for added comfort and to help reduce fatigue in the feet.
- Black nylon coated mesh insole
- Anti-static when worn with appropriate footwear.



234-8173 Large

RS PRO Yellow Men Hi Vis Jackets

- High visibility
- Weatherproof
- Reflective tape marking


918-5983 Large

918-5992 Xlarge

918-6005 Medium

918-6009 Large

918-6018 Xlarge

918-6011 XXLarge

RS PRO White Unisex Disposable Lab Coat

- Ideal for all your laboratory, science, medical and engineering work.
- Designed for using within an ISO 5 cleanroom or laboratory environment.
- Disposable and made from a high-density polyethylene fibre.


829-5237 Unisex

RS PRO Black Gel Adjustable Strap Knee Pad

- One size, gel filled
- Comfortable, extra thick support round the knee
- Single neoprene strap prevents chafing


465-9369 One Size

Hyflex Black Reusable Polyethylene Cut Resistant Arm Protector

- Narrow fit
- Engineered to perform with any HyFlex cut-resistant gloves


3M White Disposable Coverall

- This protective overall creates a lightweight and comfortable solution to skin protection in the workplace.
- Designed to protect against light hazards, it is suitable for a variety of applications where worker protection is paramount.
- These versatile and easy-to-use protective overalls are employed in many industries as a cost-effective solution to workplace PPE.


185-7210 XL

RS PRO Black Back Support Belt

- Durable and lightweight
- Manufactured from nylon
- Hook and loop fastenings for easy adjustment


015-4857 34 → 38in

130-1061 16in One size

Protect your team. Protect your productivity.

Statistics like lost working days don't reveal the full impact of a workplace injury. Production, productivity and morale can all be affected, so when it comes to choosing the right safety equipment, it doesn't pay to cut corners.

Choose from our extensive range of workplace safety solutions from leading global brands and specialist manufacturers. We have thousands of items that are always in stock, so why shop anywhere else...



Personal Protective Equipment

- Gloves
- Head Protection
- Goggles
- Workwear & Overalls
- Boots
- Masks
- Ear Protection
- Fall Arrest



Safety Signage & Site Safety Equipment

- Hazard & Warning Signs
- Safety Barriers
- Mirrors
- Fire Extinguishers
- Tethered Tools
- Work Platforms
- Floor Mats, Anti-Slip & Hazard Marking



Electrical Safety

- Portable Appliance Testers
- Installation Testers
- Voltage Testers
- Electrical Warning Signage
- Lockouts
- Lockable Isolators



Machinery Safety & Guarding

- Guarding & Fencing
- Light Curtains
- Emergency Stops
- Interlocked Safety Switches
- Safety Relays & Controllers
- Beacons & Sounders

South Africa: rsonline.co.za

Email: sales.za@rsgroup.com

Africa: rsonline.africa

Email: africa@rsgroup.com

Tel: +27 11 691 9300

RS South Africa, No.20 Indianapolis Street, Kyalami Business Park, Midrand 1684, South Africa

