



[rspro.com](http://rspro.com)

# INDUSTRIAL CONTROL & COMMUNICATION

## RANGE GUIDE



<b>INDUSTRIAL CONTROL &amp; COMM. - WORKING ENVIRONMENTS</b>	<b>3</b>
<b>PRODUCTION LINE</b>	<b>4</b>
AVAILABLE RANGE	4
RELATED PRODUCTS	5
<b>CONTROL PANEL</b>	<b>6</b>
AVAILABLE RANGE	6
RELATED PRODUCTS	7



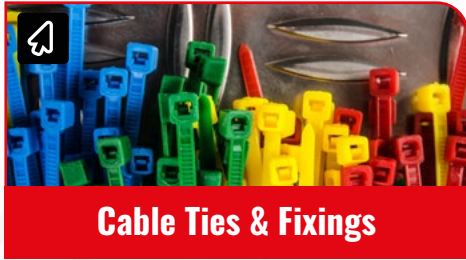
**PRODUCTION LINE**



**CONTROL PANEL**



**Proximity Sensors****Level Sensors****Pressure Sensors****Float Switches****Photoelectric Sensors****Sensor Connectivity****Electrical Power & Industrial Cables****Sensor & Actuator Cables****Industrial Circular Connectors****Heavy Duty Power Connectors****Multi Function Panel Meters****Energy Meters****Sounder Beacons****RTD Sensors****Temperature Controllers****Thermocouples**



**Cable Ties & Fixings**



**Hand tools**



**Motors & Drives**



**Greases, Oils & Lubricants**



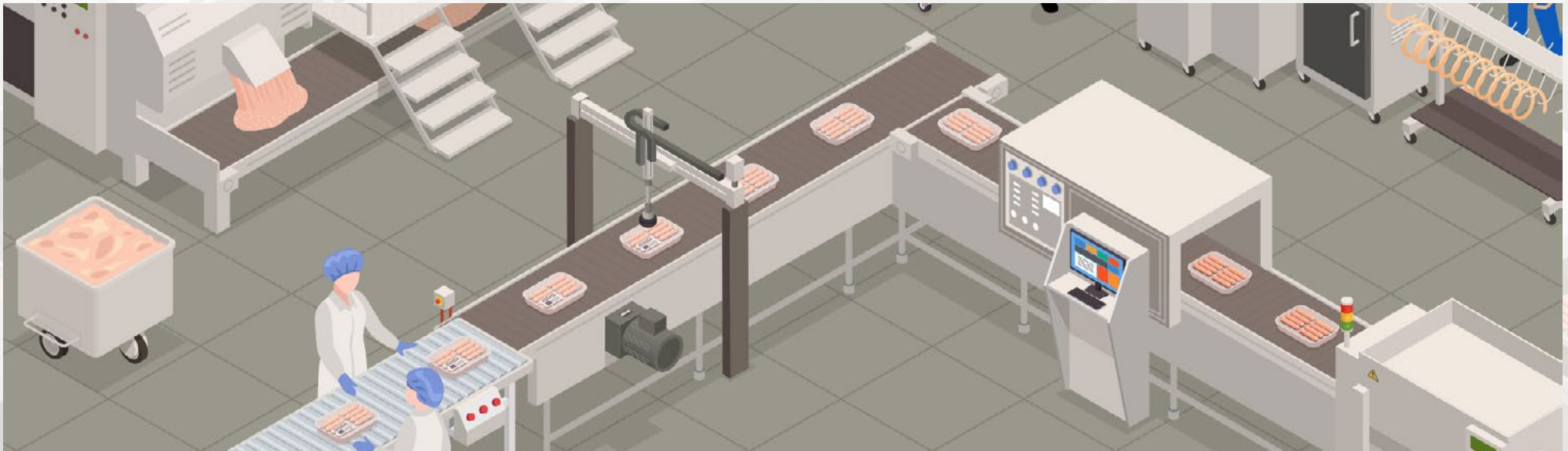
**Personal Protective Equipment & Workwear**



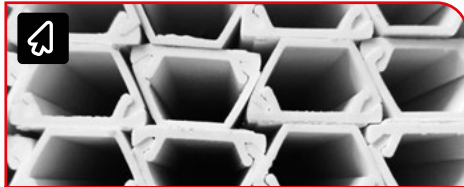
**Fasteners & Fixings**



**Test & Measurement**



**MCBs****HMI Displays****Time Switches****Relays****DIN Rail Terminal Blocks****Hook Up Wire****Automation Signalling****Push Button Switches****Circular Connectors****DIN Rail Power Supplies****Axial Fans****Emergency Stop Push Buttons****Enclosures****Counters****Signal Conditioners****Current Transformers**



**Cable Trunking**



**Wire Terminals & Splices**



**Cable Glands & Fittings**



**Mains & DC Power Connectors**



**Cable Markers**



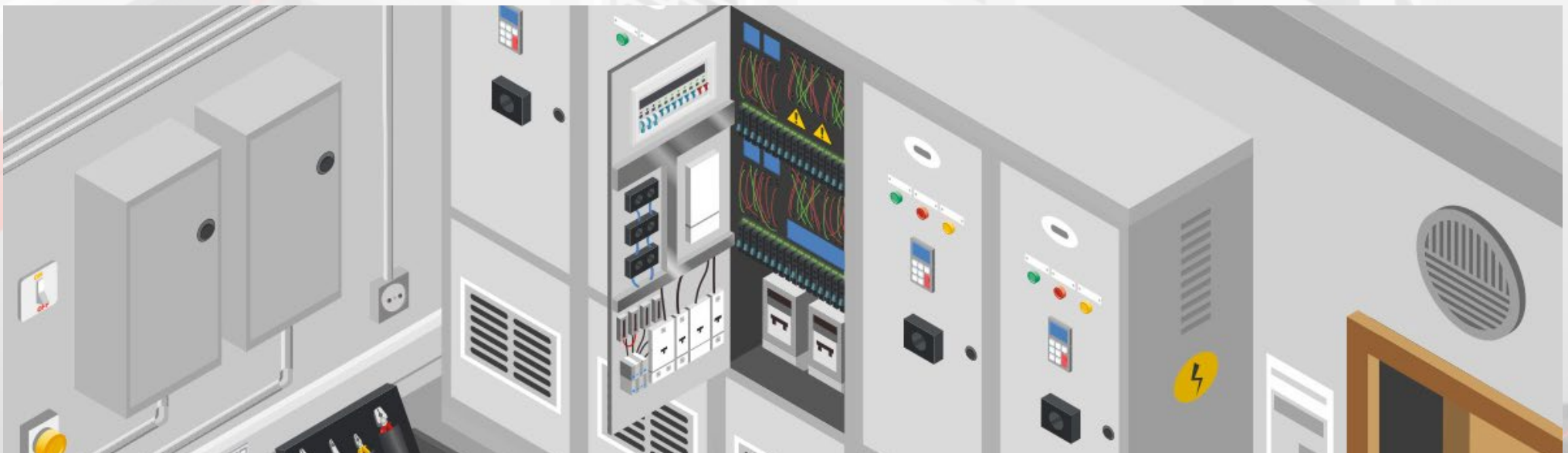
**Fasteners & Fixings**



**Test & Measurement**



**Hand tools**



**RS PRO products are audited against demanding international standards, inspected for durability and consistency and tested by leading engineers.**

Only when products have been through this process they are awarded our seal of approval, quality that can be trusted. Confidence in this process is reflected in our long product warranties, proof that our products will consistently deliver the quality you expect for a long time to come.

