

ELECTRONICS DESIGNED FOR YOU

**Giving you extra value,
across the board**





CONTENTS

4	Development Tools
10	Microcontrollers/Memory
11	Analog
12	Analog/Discretes
13	Discretes
14	Discretes/Optoelectronics
15	Optoelectronics
19	Passives Components
20	Passive Components/Sensing
21	Sensing
22	Sensing/ Wireless Comms
24	Timing/Switches and Relays
25	Switches and Relays / Cable & Connectors
26	Cable and Connectors
30	Cable and Connectors / Electromechanical
31	Displays
32	3D Printing
34	Soldering
36	ESD Control
40	Tools

To view our latest prices, charges and full terms see RS Conditions of Sale as set out online at au.rs-online.com.

Published by: RS Components Pty Limited. Registered office: 25 Pavesi Street Smithfield NSW 2164 Australia. RS are trademarks of RS Components Limited. An RS Group PLC Company.

Technology never stands still, infact it's moving at its quickest pace in nearly a century

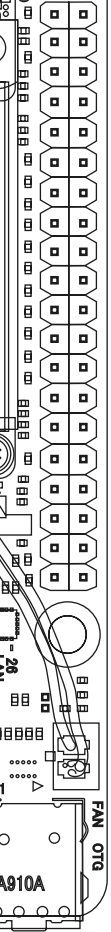
With the development and evolution of medical devices, contact-free solutions, communications, EVs, wireless connectivity, cloud-based tools, IoT – to name a few! All products and innovations improving our lives and the way we do business.

We too know a thing or two about electronics and have been proud to support our ever-growing electronics community for over 80 years. As your partner, we'll help you source the products, design tools and solutions to get the job done – with access to over 700 electronics manufacturers and 250,000 electronic products, all in one place.

This brochure highlights just a selection of our range of electronic components, development and prototyping tools from many trusted brands such as TE Connectivity, Amphenol, Molex, Infineon, ST, Microchip, Renesas, ams OSRAM, SEGGER, Würth Elektronik and ebm-papst.

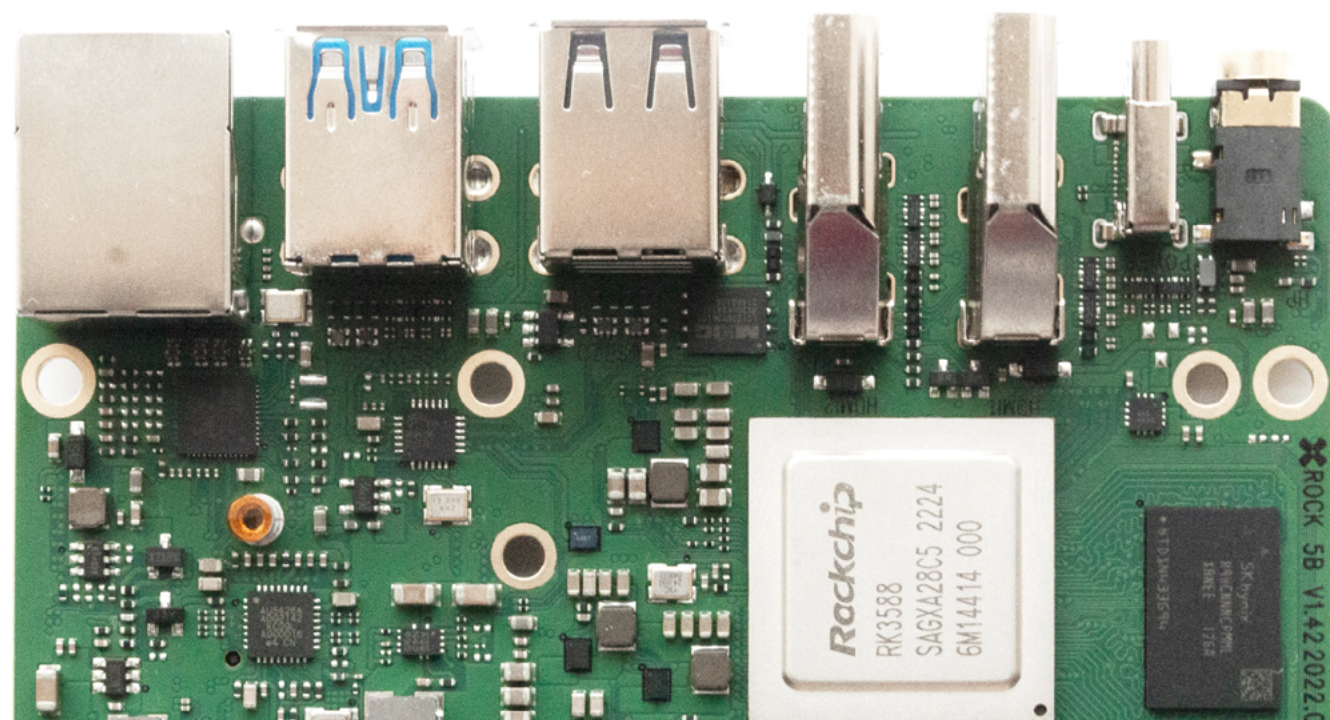
And why not take a look at our DesignSpark community, which connects over a million like-minded engineers from all walks of life, using our design resources to improve productivity and innovate responsibly. You'll find plenty to give you inspiration including programming software, CAD libraries and tech updates to help fire up the ordinary and ignite the extraordinary.

We're confident you'll find everything you need when it comes to electronics – we're here to support you.



ROCK

Exclusively curated for engineers and professionals at the forefront of technology. Unleash the true power of computing with ROCK SBCs. Crafted with meticulous attention to detail, ROCK's Single Board Computers (SBCs) are tailored to meet the demands of discerning engineers and professionals. Discover unparalleled performance, enhanced connectivity, and robust multimedia capabilities, making ROCK the ideal choice for advanced industrial applications, edge computing projects, and high-complexity automation systems. Elevate your engineering endeavors and stay ahead in your field with ROCK's exceptional SBC solutions, setting new standards for efficiency and innovation.



ROCK 5A

- Introducing the latest addition to our next-gen ROCK 5 series, the OKdo ROCK 5A Model A 16GB Single Board Computer.
- Powered by the reliable Rockchip RK3588S SoC, this SBC offers exceptional performance for a wide range of projects.
- The octa-core processor features a quad Cortex A76 @ 2.2~2.4GHz and a quad Cortex A55 @ 1.8GHz CPU, along with an Arm Mali™ G610MC4 GPU, providing reliable processing power.

8GB



257-3562 8 GB

256-3914 16 GB

ROCK 4C+

- A powerful and feature-packed SBC built around the formidable Rockchip RK3399-T SoC. Arm® big.LITTLE™ dual Arm Cortex® A72, quad Cortex-A53 CPU, & Arm Mali™ T860MP4 GPU. 4GB 64-bit RAM & an eMMC socket, it ensures efficient data handling. Power on/off button, external antenna, & audio jack for enhanced usability. Dual micro-HDMI up to 4Kp60 resolution, Bluetooth 5.0, Gigabit Ethernet, & Wireless LAN.

4GB



249-3158 ROCK 4 Model C+ 4GB SBC only

250-2784 ROCK 4 Model C+ 4GB SBC only, 100 pack

RS114CP-D4-BULK

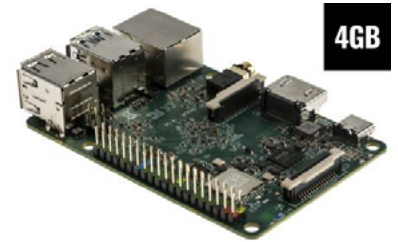
230-6199 Starter kit includes:
ROCK 4 Model C+ 4GB single board computer, 5V/3A Universal Power supply, USB to USB-C cable with in-line switch, 2 x 1M Micro HDMI to HDMI cables, 32GB MicroSD Card. (with preloaded Linux OS), MicroSD card to USB reader, CPU heat sink and fan, Metal enclosure, Mini screwdriver.

ROCK4C+ Starter Kit

ROCK 4SE

- Powered by the high-performing Rockchip RK3399-T processor, featuring big.LITTLE™ Arm® Dual Cortex-A72® CPU, Quad-core Cortex-A53, and Arm Mali™ T860MP4 GPU.
- 4GB 64bit LPDDR4 RAM and expandable with an eMMC module or SSD through an m.2 connector.
- Boasting onboard RTC, WiFi, Bluetooth, Audio jack (headphone and headset), and a 4K HDMI port for seamless connectivity experiences.

4GB



220-9536 4 GB

ROCK 3A

- The ROCK 3A is packed with features, including Quad core Armv8.2-A Cortex®-A55 CPU, Arm Mali™ G52 GPU, HDMI 2.0 port supporting displays up to 4K@60fps resolution, multiple connectivity and storage possibilities.

2GB



256-3910

ROCK 3C

- Reliable single board computer based on the powerful Rockchip RK3566 SoC in a compact form factor
- Delivers outstanding performance while leveraging outstanding mechanical compatibility, it benefits from a Quad core Armv8.2-A Cortex®-A55 CPU, Arm Mali™ G52 GPU, Wireless support including WiFi 5, HDMI 2.0 port supporting displays up to 4K@60fps resolution, multiple connectivity and storage possibilities, and it's compatible with a wide range of software operating systems.

1GB

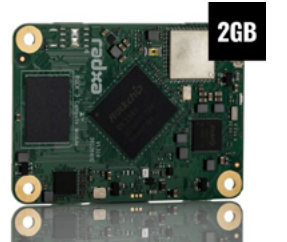


249-3157

ROCK CM3

- System on Module (SoM) based on a powerful Rockchip RK3566 System on Chip (SoC), Quad-core Arm® Cortex®-A55 CPU and Arm Mali™-G52-2EE GPU. This CM3 is designed to increase the performance and capabilities of your design applications.
- With a 2GB LPDDR4 RAM, 16GB eMMC flash storage and wireless connectivity, including WiFi 5 and Bluetooth® 5.0, and many other class-leading features incorporated in this compact board of just 55mm x 40mm, the ROCK 3 Compute Module can be easily integrated into different industrial and multimedia projects.

2GB



249-3154 Compute Module (CM3) 2GB/16GB WIFI/BT

STEVAL-STLKT01V1 SensorTile Temperature Development Kit

- Featuring a dedicated App, the kit is complemented by software, tools and a complete firmware library
- The SensorTile can fit easily into an IoT hub or sensor network
- It's small, square shape features powerful processing capabilities using an 80MHz STM32L476JGY microcontroller and low energy Bluetooth network processor
- SensorTile also features a large spectrum of motion and environmental MEMS sensors



125-3924 STEVAL-STLKT01V1

ZMOD4410 Indoor Air Quality Gas Sensor Module Evaluation Kit

- User-friendly EVK expedites configuration and evaluation of the ZMOD4410 Gas Sensor Module
- Supports different methods of operation, including Low Power and AI technology for improved ppm TVOC readings
- Operates with Renesas provided software; either with executable ZMOD4410 GUI or alternatively with firmware programming examples for Windows® and Linux®
- Additional pins to measure power consumption, supply voltage, and GPIO trigger for external device



208-7746 ZMOD4410-EVK-HC

MCP3564 ADC Evaluation Board V2 for PIC32 MCUs

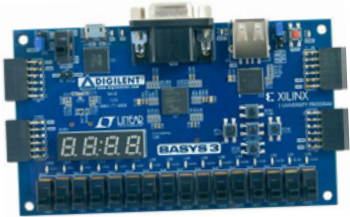
- Provides a development platform for 32-bit PIC device based applications, using existing 100-pin PIC microcontroller Plug-in Module (PIM) systems that are compatible with the Explorer 16 and other high-pin count PIC32 device-based demo boards
- Offers integrated features such as internal oscillator, temperature sensor and burnout sensor detection
- Fully configurable with Oversampling Ratio (OSR) from 32 to 98304 and gain from 1/3X to 64X
- Comes with a 20 MHz SPI-compatible serial interface



204-2688 ADM01097

Digilent BASYS 3™ FQGA Development Board

- Comprehensive, ready-to-use digital circuit development platform based on the latest Artix-7 Field Programmable Gate Array (FPGA) from Xilinx
-



134-6451

Motor Control Evaluation System For Motor Control IC RAJ306010

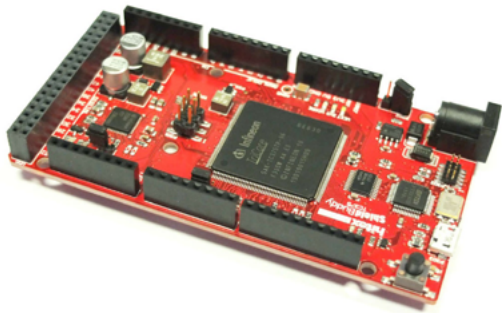
- Easy to start the motor control evaluation with RAJ306010
- High expandability and operability by small board (approx B6 size: 148 x 125 mm)
- Connectable to the external MOSFET board
- Various sample codes for the basic motor drive
- Desk Top Lab ICS tool support (ICS: PC tool for waveform display)



234-7911 RTK0EML2C0S01020BJ

AURIX™ TC275 ShieldBuddyTC375

- Fitted with AURIX™ TC375 32-bit multicore processor on a board following the Arduino™ standard making it compatible with many of the application shields that are available
- Direct USB debug interface
- Allows instant access for new and prospective AURIX users to hundreds of shields

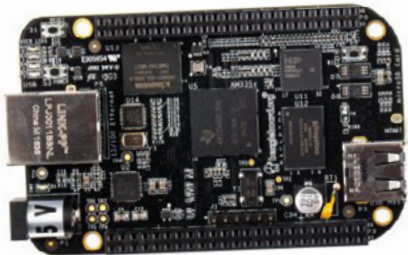


213-3243 KITA2GTC375ARDSBTOBO1



BeagleBone Black Rev C SBC

- Introducing the Rev C open-source development board, featuring a potent ARM Cortex-A8 and ARM Cortex-M3.
- Affordable, community-supported platform suits developers and hobbyists alike.
- Preloaded with Debian Linux, it enables quick booting in 10 seconds.
- Get started in just 5 minutes with a single USB cable, whether for standalone or embedded system projects.



125-2411 Beaglebone Black board

Würth Elektronik Development Kit Horticulture LEDs

- With Magi²C power module 172 946 001. The intensity of each channel can be adjusted individually (dimming 0 - 100%)
- APP "WEilluminate" to perform dimming. PWM dimming method – controlled by PIC16F1527 microcontroller. Dimming profiles and colours can be stored
- Horticulture LED panel for plant grow with Deep Blue, Hyper Red, Far Red and White and up to 30umol/s output
- Conducted and radiated EMI compliant (EN55015), with good thermal behaviour



WÜRTH ELEKTRONIK
MORE THAN YOU EXPECT

210-8068 150001

STWIN SensorTile Wireless Industrial Node Development Kit

- The STEVAL-STWINKT1B SensorTile wireless industrial node is a development kit and reference design that simplifies prototyping and testing of advanced industrial IoT applications such as condition monitoring and predictive maintenance
- Multi-sensing wireless platform implementing vibration monitoring and ultrasound detection
- Updated version of STEVAL-STWINKT1, now including STSAFE-A110 populated, BlueNRG-M2S module and IMP23ABSU MEMS microphone
- Built around STWIN core system board with processing, sensing, connectivity and expansion capabilities
- Ultra-low-power ARM Cortex-M4 MCU at 120 MHz with FPU, 2048 bytes Flash memory (STM32L4R9)



201-0404 IIS3DWBTR

210-2301 STEVAL-STWINKT1B

Coral M.2 Accelerator with Dual Edge TPU

- M.2 module (E-key) that includes two Edge TPU ML accelerators, each with their own PCIe Gen2 x1 interface. The Edge TPU is a small ASIC designed by Google that accelerates Tensor Flow Lite models in a power efficient manner.
- Integrated power management
- Include two Google Edge TPU ML accelerators
- Its operating temperature range is from -40 to +85°C



Coral

213-3255 8 bit Module

K...H Series High Operating Temperature Multilayer Ceramic Capacitors Kit

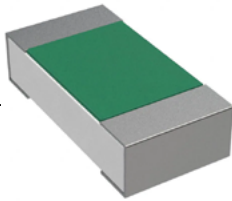
- This sample kit offers 24 different radial MLCC capacitors that differ in dielectric, capacitance value and voltage, with 10 of each variety supplied
- AEC-Q200 qualified (PPAP available)
- High reliability, high performance
- Radial mounting style
- Designed for application in the most extreme operating conditions
- Unmatched maximum operating temperature of +175°C for ceramic dielectrics



22-0708

JG73P Endured Pulse Power Flat Chip Resistors

- Superior to RK73 series chip resistors in pulse withstanding voltage and high power
- Resistance tolerance is available from ±0.5%
- Suitable for both reflow and flow soldering
- Products with lead free termination meet EU-RoT requirements AEC-Q200 Tested



241-0646

EMI Suppression Axial Ferrite Bead Kit

- WE-CBF HF series is available in 3 types
- Modified internal layout increases the effective suppression range
- The impedance at 1GHz is at least 3 times higher than WE-CBF product family
- Operating temperature: -55°C to +125°C
- Ideal for suppression in signal lines in the high frequency range e.g. fast data lines in CPU, high speed bus systems and HDD



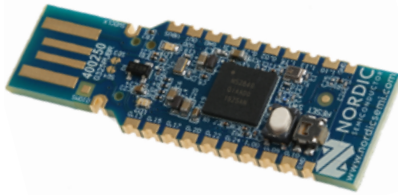
862-4982

Nordic NRF52840 System on Chip, Dongle and Development Kit

- The nRF52840 is fully multiprotocol capable with full protocol concurrency.
- It has protocol support for Bluetooth LE, Bluetooth mesh, Thread, Zigbee, 802.15.4, ANT and 2.4 GHz proprietary stacks.
- The nRF52840 is built around the 32-bit ARM® Cortex™-M4 CPU with floating point unit running at 64 MHz.
- It has NFC-A Tag for use in simplified pairing and payment solutions.

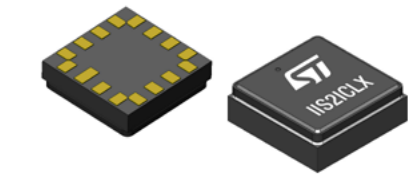


176-9054	nRF52840 Dongle
146-3539	NRF52840-DK
180-9081	NRF52840-QIAA-R

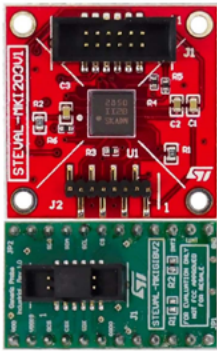


STEVAL-MKI209V1K MEMS Inclinometer Evaluation Board

- The STEVAL-MKI209V1K evaluation board has an embedded IIS2ICLX inclinometer sensor, which is connected through flat cable to a simple adapter board (STEVAL-MKIGIBV2) to render it compatible with STEVAL-MKI109V3
- User friendly IIS2ICLX board
- Complete IIS2ICLX pinout for a standard DIL 24 socket
- Double-sided adhesives included for easy mounting on equipment to be measured
- Fully compatible with and STEVAL-MKI109V3 motherboard
- RoHS compliant



204-9946	IIS2ICLXTR
206-6092	STEVAL-MKI209V1K



Lattice USB Flywire Cable

- Support for all Lattice programmable products
- 1.2 V to 3.3 V programming (HW-USBN-2B)
- 1.2 V to 5 V programming (All other cables)
- Ideal for design prototyping and debugging
- Connect to multiple PC interfaces
- USB (v.1.0, v.2.0)
- PC Parallel Port
- Easy-to-use programming connectors
- Versatile flywire, 2 x 5 (.100") or 1 x 8 (.100") connectors
- 6 feet (2 meters) or more of programming cable length (PC to DUT)



863-3526	HW-USBN-2B
----------	------------



Broadcom Spectrometers

- The matchbox sized spectrometers are designed for industrial integration, performing measurements between 190 nm and 1700 nm.
- High optical performance in a rugged housing offers reliable measurement in industrial surroundings
- Sophisticated electronics, with USB, SPI and UART as serial interfaces
- Free Software and SDK ensure fast response times for real-time analytics
- Applications include: Process Control and Monitoring, Material and Polymer Analysis, Color Measurements, Environmental Monitoring
- Authentication and Anti-Counterfeiting, Light Measurements, Quality Control and Water Quality Analysis

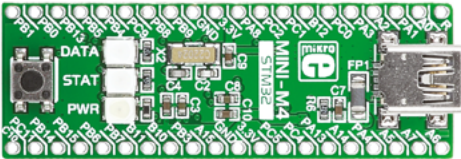


229-9750	AFBR-S20W2VI Qwave NIR – 700 to 1030 nm
223-1877	AFBR-S20M2NI Qmini NIR – 730 to 1080 nm
223-1878	AFBR-S20M2VI Qmini VI – 370 to 750 nm
223-1881	AFBR-S20M2WU Qmini WIDE UV – 225 to 1000 nm
208-0510	AFBR-S20M2WV Qmini WIDE VIS – 225 to 1000 nm.
226-8412	AFBR-S20N1N256 Qneo NIR – 950 nm – 1700 nm



MINI-M4™ development board for STM32

- The whole STM32 development board fitted in DIP40 form factor, containing powerful STM32F415RG microcontroller.



820-9870	MIKROE-1367
----------	-------------

Nordic NRF52833 System on Chip and Development Kit

- The nRF52833 is a general-purpose multiprotocol SoC with a Bluetooth Direction Finding capable radio, qualified for operation at an extended temperature range of -40°C to 105°C. It is the 5th addition to the industry leading nRF52 Series and is built around a 64 MHz Arm Cortex-M4 with FPU, and has 512 KB flash and 128 KB RAM memory available for higher value applications.



194-6358	nRF52833 DK
194-6360	nRF52833-QIAA-R7



Programmable wireless box kit for IoT applications

- The STEVAL-MKBOXPRO (SensorTile.box PRO) is the new ready-to-use programmable wireless box kit for developing any IoT application
- Based on remote data gathering and evaluation
- Leverage both motion and environmental data sensing and a digital microphone
- Enhance the connectivity and smartness of any environment



261-4773	ISM330ISNT
261-4180	LSM6DSO16IST
261-4393	STHS34PF80T



Chip Programmers

- Chip programmers known as device programmers or IC programmers are items of electronic equipment that arrange written software to configure programmable devices.
- They support a broad range of chip sets such as EPROMs, EEPROMs and flash, ROMs, GALs and microcontrollers.
- In the case of EPROMs, once they have been programmed, they can be erased with the use of an EPROM UV eraser.



775-4684	48Pro2C
707-9870	DATAMAN-48PRO2
772-3069	FLASHBIOSBOX
547-877	MESE
772-3078	PRESTO



SEGGER J-LINK

- SEGGER J-Links are the most widely used line of debug probes on the market.
- They have provided solid value to embedded development for over a decade.
- Unparalleled performance, an extensive feature set, many supported CPUs and compatibility with popular environments all make J-Link an unbeatable choice.



131-1319	8.08.00 J-LINK BASE
131-1320	8.08.28 J-Link PLUS
131-1322	8.12.00 J-Link PRO
131-1321	8.16.28 J-Link ULTRA+



USB Debug Adapter For C8051FXXX MCU

- The 8-bit USB Debug Adapter (UDA) provides the interface between the PC's USB port and the Silicon Labs 8-bit
- target device's in-system debug/programming circuitry.
- The 10-pin ribbon cable connects the adapter to the target board and the target device's debug interface.



757-0297	DEBUGDPTR1-USB
----------	----------------



Intel FPGA Download Cable

- The Intel® FPGA Download Cable interfaces a USB port on a host computer to an FPGA mounted on a printed circuit board. The cable sends configuration data from the host computer to a standard 10-pin header connected to the FPGA. You can use the Intel FPGA Download Cable to iteratively download configuration data to a system during prototyping or to program data into the system during production.



690-4093	PL-USB-BLASTER-RCN
----------	--------------------

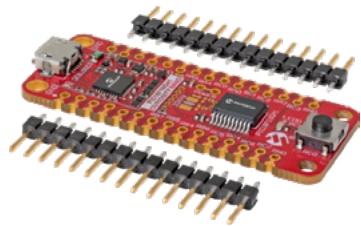


Microchip PIC18-Q41 MCU

- PIC18-Q41 is a compact, high performance PIC18 product family with advanced analog peripherals for sensor and real-time control applications .
- The products are equipped with an on-chip operational amplifier, 12-bit ADC with Computation and two 8-bit DACs for improved data acquisition and sensor interfacing capabilities.
- Other key features include 16-bit PWMs, Direct Memory Access, Configurable Logic Cells and multiple communication interfaces.



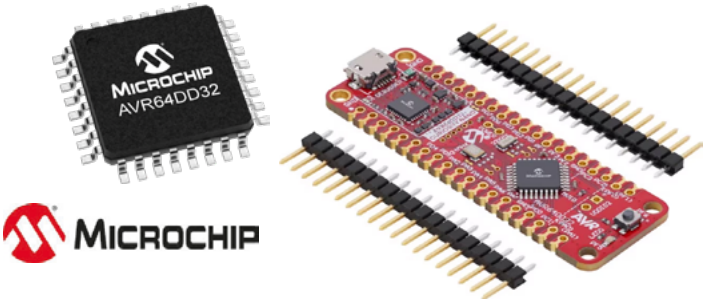
274-4263	PIC18F15Q41-I/P
274-4265	PIC18F15Q41-I/REB
274-4267	PIC18F16Q41-I/REB





Microchip AVR® DD family of microcontrollers

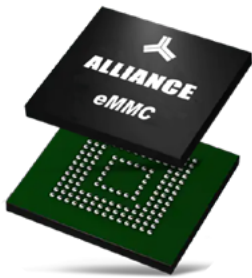
- The AVR® DD family of microcontrollers feature the well-known AVR® CPU, now running at up to 24 MHz across the full supply voltage range of 1.8V to 5.5V.
- The family includes 16 KB, 32 KB, and 64 KB Flash variants in 14 to 32-pin package options. The AVR DD family is designed to bring real-time control and multi-voltage operation to applications including industrial control, home appliance products, automotive, and Internet of Things (IoT).



273-0340 AVR64DD32-E/PT

EMMC

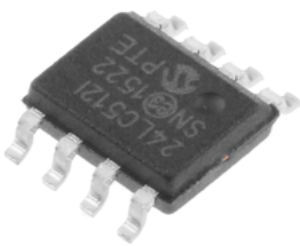
- Compliant with the JEDEC eMMC v5.1 industry standard
- eMMCs support a wide range of features such as boot operation, replay protected memory block (RPMB), device health report, field firmware updates, power-off notification, enhanced strobe features for faster and more reliable operation, write leveling, high-priority interrupt (HPI), secure trim/erase, and high-speed HS200 and HS400 modes.
- The devices are also backwards-compatible with eMMC v4.5 and v5.0.



259-2116 ASFC16G31M-51BIN
242-0191 ASFC4G31M-51BIN
242-0193 ASFC8G31M-51BIN

Serial EEPROM

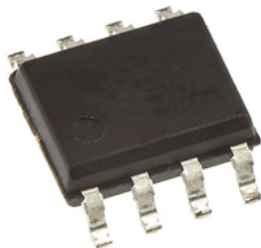
- A 512Kb (64K x 8) Serial Electrically Erasable PROM (EEPROM)
- Capable of operation across a broad voltage range (2.5V to 5.5V).
- Developed for advanced, low-power applications such as personal communications and data acquisition



703-7961 24LC512-I/SN
241-2220 DM160237

Data-Logging Memory

- F-RAM offers virtually unlimited endurance of 100 trillion read/write cycles
- Fast write speed
- High endurance
- Low power consumption



124-2933 CY15B104Q-SXI
188-5304 CY15B104Q-SXI

Flash Memory

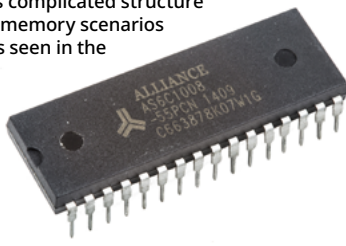
- Non-volatile memory storage.
- Can be electrically erased and programmed at byte-level etaining data regardless of a power source.



914-0674 MX25L51245GMI-10G
914-2816 MX29LV160DBTI-70G
171-2222 W25Q128JVSIIQ/TUBE

SRAM

- SRAM stands for Static Random Access Memory and is a type of semiconductor memory that uses bistable latching circuitry (flip-flop) to store each bit.
- It holds data bits in its memory so long as power is being supplied. It cannot hold data if power is removed. SRAM is used where speed or low power are needed.
- It's higher density than DRAM, and less complicated structure makes it ideal to use in semiconductor memory scenarios where high capacity memory is used as seen in the working memory within computers.

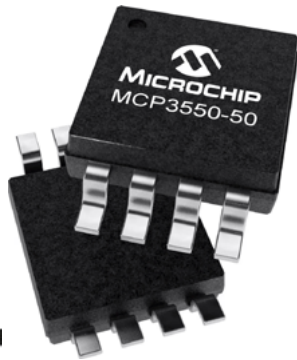


744-4542 AS6C1008-55PCN
744-4561 AS6C4008-55PCN
538-148 AS6C62256-55PCN
538-158 AS6C6264-55PCN
538-154 AS6C8008-55ZIN



AD/DA Convertors

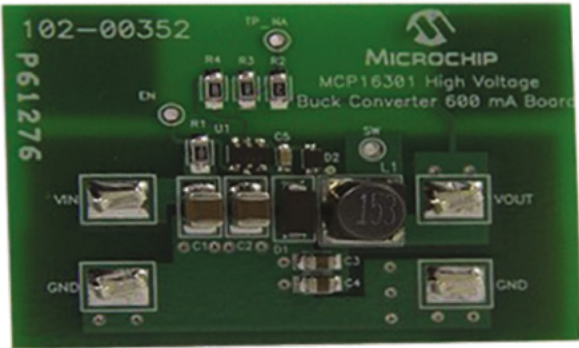
- Providing high accuracy and low noise performance for applications where sensor measurements such as pressure, temperature and humidity are performed.
- With the internal oscillator and high oversampling rate, minimal external components are required for high accuracy applications.



724-0283 MCP3550-50E/SN

DC-DC Converter

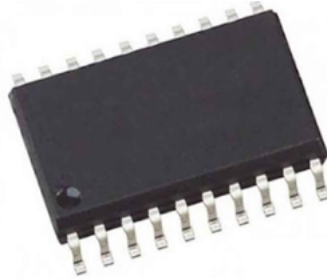
- A highly integrated, high-efficiency, fixed frequency, step-down DC-DC converter in a popular 6-pin SOT-23 package that operates from input voltage sources up to 30V.
- Integrated features include a high side switch, fixed frequency Peak Current Mode Control, internal compensation, peak current limit and overtemperature protection.
- Minimal external components are necessary to develop a complete step-down DC-DC converter power supply.



770-9476 MCP16301T-I/CHY

Gate Driver

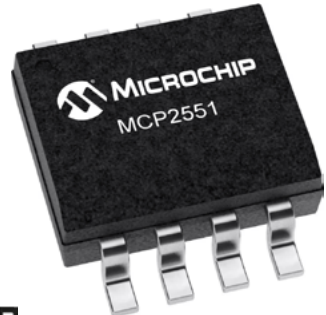
- 80V/2.5A Peak, High Frequency Full Bridge FET Driver with Charge Pump and Independent Control Inputs
- The HIP4081A can drive every possible switch combination except those which would cause a shoot-through condition and can switch at frequencies up to 1MHz
- It is well suited to driving Voice Coil Motors, high-frequency switching power amplifiers, and power supplies.



196-8879 HIP4081AIBZT

CAN Transceiver

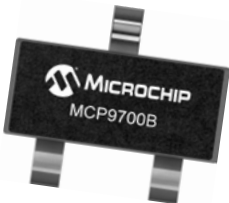
- A high-speed CAN transceiver, fault-tolerant device that serves as the interface between a CAN protocol controller and the physical bus.
- The MCP2551 provides differential transmit and receive capability for the CAN protocol controller and is fully compatible with the ISO-11898 standard, including 24V requirements. It will operate at speeds of up to 1 Mb/s.



738-6036 MCP2551-I/SN

High Accuracy Low-Power Linear Active Thermistor IC

- Linear Active Thermistor ICs are sensors whose output voltage is directly proportional to measured temperature.
- The MCP9700B can accurately measure temperature from -40°C to +150°C.
- The output of the MCP9700B is calibrated to a slope of 10mV/°C and has a DC offset of 500mV.



274-4662 MCP9700BT-E/TT
274-4664 MCP9700BT-H/TT



Operational Amplifiers

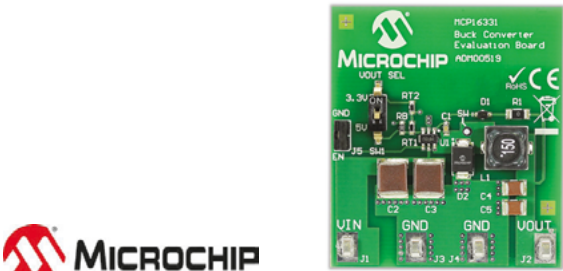
- 4.5MHz, BiMOS Operational Amplifier with MOSFET Input/Bipolar Output
- Combines the advantages of high voltage PMOS transistors with high voltage bipolar transistors on a single monolithic chip



921-5425 CA3140EZ

Step-Down Switching Regulator

- A highly integrated, high-efficiency, fixed frequency, step-down DC-DC converter in a popular 6-pin SOT-23 package that operates from input voltage sources up to 50V.
- Integrated features include a high side switch, fixed frequency Peak Current Mode Control, internal compensation, peak current limit and overtemperature protection. Minimal external components are necessary to develop a complete step-down DC-DC converter power supply.



831-9002 ADM00519

841-7594 MCP16331T-E/CH

Broadcom 125-Mbaud Fast Ethernet Transceivers

- These Broadcom AFBR-58x3 transceivers provide the system designer with products to implement a range of 125-MBd Fast Ethernet and FDDI as well as 100-Mb/s Asynchronous Transfer Mode (ATM) designs.
- Multisource 1 × 9 package style with choice of duplex SC or duplex ST1 receptacle
- Single 3.3V power supply operation
- DCPECL differential input and output data connections
- DCPECL signal detect output
- Industrial temperature range –40°C to 85°C



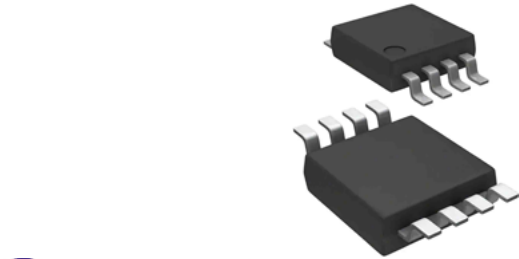
229-9745 AFBR-5813TQZ FE TRX ST-Type Duplex 1x9

229-9747 AFBR-5823QZ FE TRX SC-Type Duplex 2x9

229-9749 AFBR-5823TQZ FE TRX ST-Type Duplex 2x9

RS-485/RS-422 Transceiver

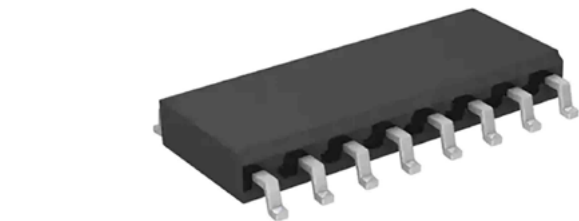
- ±15kV ESD Protected
- 3.3V, Full Fail-safe, Low Power, High Speed or Slew Rate Limited
- RS-485/RS-422 Transceiver



196-8062 ISL83072EIUZA-T

CMOS Analog Switch

- The DG411 series monolithic CMOS analog switches are drop-in replacements for the popular DG211 and DG212 series devices.
- They include four independent single pole throw (SPST) analog switches, and TTL and CMOS compatible digital inputs.
- These switches feature lower analog ON-resistance (ONP-P signals). Power supplies may be single-ended from +5V to 44V, or split from ±5V to ±20V.

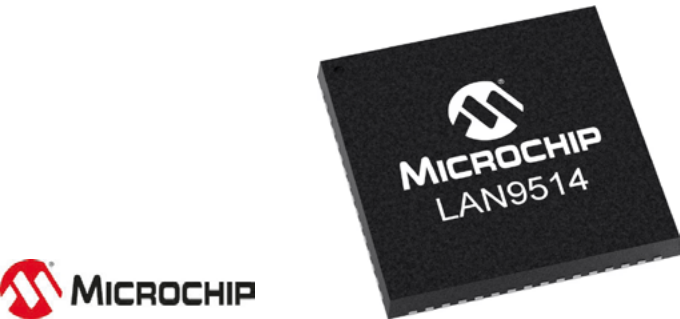


196-9028 DG411DYZ



Microchip Ethernet Controller

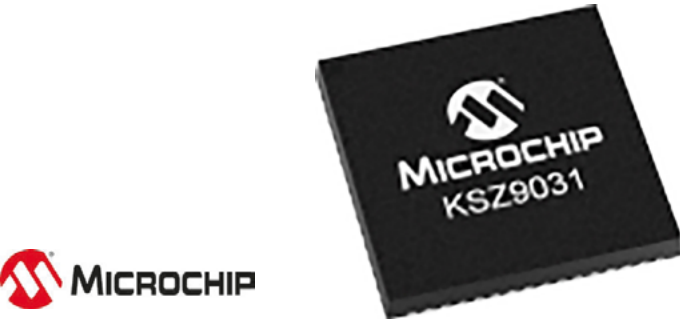
- Fully-integrated, Hi-Speed USB 2.0 hub and high-performance 10/100 Ethernet controller
- Specifically designed to provide system architects with a low-cost, power-efficient, small-footprint USB to Ethernet and multi-port USB connectivity solution in a single package.



798-5248 LAN9514I-JZX

Microchip Gigabit Ethernet Transceiver

- Gigabit Ethernet Transceiver with Power Saving Features
- The KSZ9031 is a completely integrated triple-speed (10Base-T/100Base-TX/1000Base-T) Ethernet physical-layer transceiver for transmission and reception of data on standard CAT-5 unshielded twisted pair (UTP) cable.
- The KSZ9031MNX offers the industry-standard GMII/MII (Gigabit Media Independent Interface/Media Independent Interface) for connection to GMII/MII MACs in Gigabit Ethernet processors and switches for data transfer at 1000Mbps or 10/100Mbps.



177-3873 KSZ9031RNXIC

Application specific MOSFET

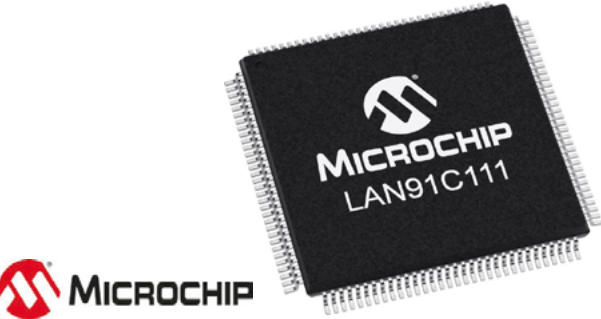
- Nexperia's unique "SchottkyPlus" technology delivers high efficiency and low spiking performance
- 330 Amp (PSMN1R2-55SLHAX) / 410 Amp (PSMNR90-50SLHAX) continuous current capability
- LFPAK88
- Ideally suited for use in brushless DC motor control, battery protection, lithium-ion battery applications (36V-42V), high power AC-DC applications, and hotswap / in-rush current management



251-7923 PSMNR90-50SLHAX

Microchip Ethernet Controller with 16/32 Bit Interface

- 10/100 Base-T/TX Ethernet Controller with 16/32 Bit Interface
- Designed to facilitate the implementation of a third generation of Fast Ethernet connectivity solutions for embedded applications.
- For this third generation of products, flexibility and integration dominate the design requirements.
- The LAN91C111 is a mixed signal Analog/Digital device that implements the MAC and PHY portion of the CSMA/CD protocol at 10 and 100 Mbps.



672-6828 LAN91C111I-NU

USB to Serial UART Interface

- The FT232RN is a USB to serial UART interface with the following advanced features:
- Single chip USB to asynchronous serial data transfer interface.
- Entire USB protocol handled on the chip. No USB specific firmware programming required.
- Fully integrated 1024-bit EEPROM storing device descriptors and CBUS I/O configuration.
- Fully integrated USB termination resistors



257-5453 FT232RNL-TUBE

Bridge Rectifier

- Universal 3 way terminals: push-on, wrap around or solder
- High thermal conductivity package, electrically insulated case
- Center hole fixing
- Excellent power/volume ratio
- For use in general purpose and instrumentation applications



The DNA of tech.™



227-8716 VS-26MB160A

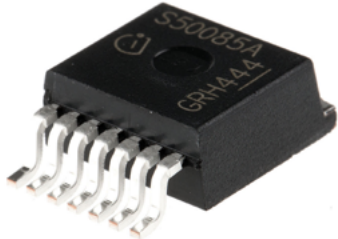


PROFET™ Power Switches

- PROFET™ - protected MOSFET - is Infineon's solution for power switch ICs, suitable for automotive and industrial applications
- Intelligent power switches consisting of a DMOS power transistor and CMOS logic circuitry for complete built-in protection
- The PROFET™ series offer protection against overload, overvoltage, short-circuit, excessive temperature, ground and power supply loss

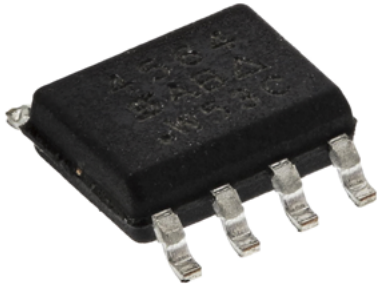


753-2891	BTS500851TMAATMA1
110-7772	BTS621L1E3128ABUMA1
753-3093	ITS4141NHUMA1
110-7725	ITS4200SMEPHUMA1



Mosfet

- TrenchFET® Power MOSFET
- 100 % Rg and UIS Tested
- Halogen free
- RoHS Compliant



The DNA of tech.™

812-3230	SI4564DY-T1-GE3
----------	-----------------

Rectifier Diode VS-T40

- Fast recovery time
- Electrically isolated base plate
- Standard JEDEC® package
- Applications include motor control, inductive heating, inverters and electronic welders



The DNA of tech.™

395-9141	VS-T40HFL100S05
----------	-----------------

Rectifier Diode VS-T70

- Electrically isolated base plate
- 3500 VRMS isolating voltage
- High surge capability
- Applications include power supplies, battery chargers, welders, motor control and general industrial current rectification



The DNA of tech.™

395-9163	VS-T70HF40
----------	------------

Silicon Carbide Power Mosfets

- Produced exploiting the advanced, innovative properties of wide bandgap Silicon Carbide materials, resulting in unsurpassed on-resistance per unit area and very good switching performance almost independent of temperature
- Very tight variation of on-resistance vs. temperature
- Very fast and robust intrinsic body diode
- Low capacitance



202-4776	SCT10N120AG
202-5484	SCTH40N120G2V7AG
202-5485	SCTW100N65G2AG



Stud Rectifier Diode

- High surge current capability
- Wide current range
- Applications include battery chargers, converters and power supplies



The DNA of tech.™

395-2702	VS-16FLR60S02
----------	---------------

TVS Diode

- Excellent clamping capability
- Very fast response time
- Low incremental surge resistance
- AEC-Q101 qualified
- Wide range of uses including industrial, automotive, and telecommunication.



The DNA of tech.™

638-1608	1.5KE47CA-E3/54
----------	-----------------

Rectifier

- onsemi 1N4001-1N4007 Axial Lead Standard Recovery Rectifiers



781-5562	1N4001RLG
800-8756	1N4003RLG
184-4627	1N4004RLG
781-5571	1N4006RLG
649-1143	1N4007RLG

Through Hole Rectifier Diode

- Low forward voltage drop
- Low leakage current
- High forward surge capability
- For use in general purpose rectification of power supplies, inverters and converters

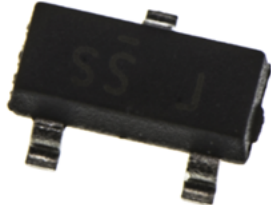


The DNA of tech.™

628-8931	1N4001-E3/54
----------	--------------

MOSFET

- N-Channel MOSFET, 220 mA, 50 V, 3-Pin SOT-23 onsemi BSS138
- Designed to minimize on-state resistance while providing rugged, reliable and fast switching performance
- Particularly suited to low voltage, low current applications such as small servo motor control, power MOSFET gate drivers, and other switching applications



671-0324	MOSFET	BSS138
----------	--------	--------

ams Osram ChipLEDs

- The products are designed for optimized performance out of a very small form factor to realize state of the art solutions.
- Applications like electronic equipment, gaming, white goods, illumination and backlighting.
- Small packages ensure utilization for space critical designs and applications
- Industry standard footprints

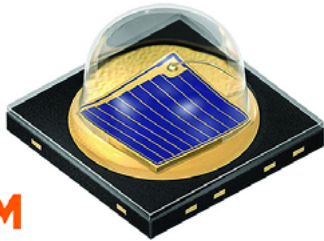


697-3610	LB Q39G-N100-35-1	0603 Blue
654-5773	LG R971	0805 Green
654-5795	LO Q976	0603 Orange
654-5420	LS Q976	0603 Super-red
497-4804	LS R976	0805 Super-red



ams Osram OSLOn Black IR LEDs

- The OSLOn Black Series high-flux LED is small and very robust, making it ideal for designing automotive or industrial applications.
- The OSLOn Black Series comes in a compact dark package with golden plates. This all-rounder offers a molded silicone lens and a standard solder pack.
- Further features include automotive robustness, benchmark thermal resistance, and a non-isolated heatsink.
- All this plus a long lifetime make the OSLOn Black Series a real bright spot for innovative design applications!

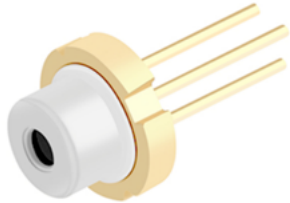


876-9423 SFH 4715AS

876-9432 SFH 4716AS

ams Osram Coloured Edge-emitting Laser Diodes

- Laser diodes in the visible spectral range are the ideal light source in industrial, consumer, medical and automotive markets. Due to their excellent beam quality, ams Osram lasers are ideally suited for the optical imaging of light.
- Single mode lasers are used in a wide range of applications such as Laser levelling, particle detection, scanning, spectroscopy and pico projection.
- High-power multi mode lasers extend the range of applications by material treatment such as engraving or welding of metals, Laser projection and high luminance light sources.



amun OSRAM

226-1791 PLPT9 450LB_E Blue 447nm - TO90 Package

Broadcom Tricolor LEDs

- These SMT LEDs come in PLCC-6 packaging with separate heat paths for each LED die, enabling high driving current.
- A wide viewing angle together with a built in reflector increases light output intensity making these LEDs ideal for use in interior electronics signs.
- Industry Standard PLCC-6 package (Plastic Leaded Chip Carrier) with individual addressable pin-out for higher flexibility of driving configuration
- High reliability LED package with silicone encapsulation
- High brightness using AlInGaP and InGaN dice technologies
- Water-Resistant (IPX6*) per IEC 60529:2001



BROADCOM

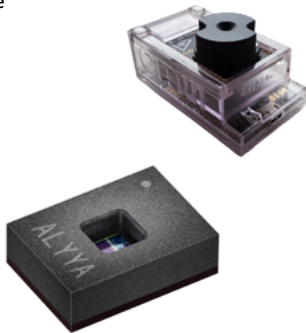
839-9926 ASMT-YTB7-0AA02 PLCC6 Black Body LED

769-3517 ASMT-YTB2-0BB02 PLCC6 Black Top LED

ams Osram AS7331 UV Sensor and Eval kit

- The AS7331 is a low-power, low noise integrated UV sensor
- Interference filter technology - No filter aging or drifts over lifetime and temperature
- 3 channel UVA/B/C radiation detection incl. daylight (VIS+NIR) blocking
- High dynamic range, adjustable to the application conditions
- Class leading sensitivity
- Broad conversion range
- Extended temperature range
- Usability in harsh environments

NEW



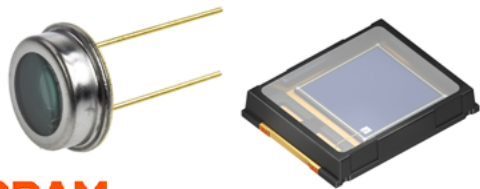
amun OSRAM

272-4082 AS7331-AQFM

272-4083 AS7331-EVK

ams Osram Photodiodes

- ams OSRAM offers a wide range of photodiodes in various footprints and packages.
- Besides the broad band detectors covering the spectral range from UV to near- infrared, the filter technologies focusing specific wavelength and explicitly designed response characteristic the photodiodes also offer a high linearity and a great stability over a high temperature range.



amun OSRAM

497-5661 BPW 21 350 to 820 nm

654-7785 BPX 61 400 to 1100 nm

497-5677 BPX 65 350 to 1100 nm

654-8895 SFH 213 FA 750 to 1100 nm

Bivar LED Light Pipes

- PLP2 Front-mount round shaped light pipes engineered to carry light
- 3mm lens size, domed or flat lens appearance
- Lengths from 2.5mm to 30.5mm (.100 in. to 1.20 in.)
- Helps protect sensitive components from ESD
- Use with panel thickness 1.2mm to 2.35mm (.047 to .093 in.)
- Diffused, smoked, and color (blue, black, green, gray, red, yellow) lens options.

BIVAR
MOVING LIGHT



891-9640 PLP2-1000

713-4703 PLP2-125

713-4712 PLP2-250

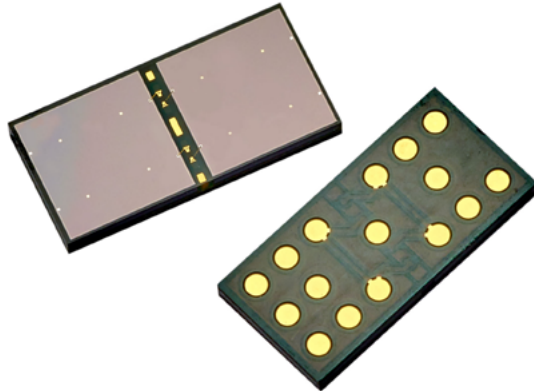
713-4728 PLP2-500



NEW

Broadcom Silicon Photo Multiplier (SiPM) Arrays

- Broadcom Silicon Photomultiplier (SiPM) arrays are used for ultra-sensitive precision measurements of single photons.
- Based on NUV-MT technology, these SiPM arrays combine improved photodetection efficiency (PDE) with decreased dark count rate and reduced crosstalk
- Larger areas can be covered by tiling multiple arrays
- The clear epoxy mold compound (EMC) is highly transparent down to UV wavelengths. Giving a broad response in the visible light spectrum with high sensitivity toward blue and the near-UV region
- The array is best suited for the detection of low-level pulsed light sources, especially for detection of Cherenkov or scintillation light from the most common organic (plastic) and inorganic scintillator materials — LSO, LYSO, BGO, NaI, CsI, BaF and LaBr as examples.



BROADCOM

261-9701 AFBR-S4N66P024M

261-9700 AFBR-S4N44P164M

Hamamatsu High Speed Photodiodes

- The S5971, S5972 and S5973 series are a high-speed Si PIN photodiodes designed for visible to near infrared light detection.
- This photodiodes provide wideband characteristics at a low bias, making them suitable for optical communications and other high-speed photometry.

Features

- S5971 : 100MHz (VR=10V)
- S5972 : 500MHz (VR=10V)
- S5973 series : 1GHz (VR=3.3V)
- High reliability



HAMAMATSU

124-7158 S5971

124-7159 S5972

124-7160 S5973

Green Laser Alignment kits

- Two high quality interchangeable, plug-and-play Green laser alignment kits.
- These 532nm Green lasers are 9 times brighter than typical Red lasers to the human eye and are particularly suited for use with surfaces such as hot steel, working at longer distances and in higher ambient light levels.
- Typical uses include the alignment and positioning of garments, cloth, paper, wood and metal.
- The kits include six interchangeable optics and are supplied in a heavy duty carry case.
- 697-3522 532nm, 5mW Green Laser, Class 3R
- 127-1566 532nm, 1mW Green Laser, Class 2
- 5 Interchangeable Optics
- Power Supply 110/240 Vac to 3.5 Vdc
- Heavy duty mounting clamp
- Heavy duty carry case



697-3522 532nm, 5mW Green Laser, Class 3R



Kingbright LED Mount Bezels

- The RTF series, from Kingbright, are a family of LED bezels
- These black nylon housings are for use with through hole LEDs in various sizes.
- Their black plastic surface offers a high contrast to the LED light output.
- LED bezels are cost effective way improve the appearance of the LED in its chosen application.
- The RTF LED bezels are suitable for use in back panel illumination, circuit board indicators and LED indicator applications.



Kingbright

262-2999	RTF-5010
262-3009	RTF-5020

LEDiL LED Lenses

- LISA2 LED Lenses
- Miniature TIR-lenses for jewellery shops, reading lights, torches and head lamps
- Ø9.9 mm variant with glue or clip mounting for up to 3535 size LED packages



710-6717	FP11002_LISA2-W-PIN
710-7199	FP11055_LISA2-RS-PIN
724-0680	FP11077_LISA2-WW-CLIP
785-1079	FP11957_LISA2-WWW-PIN

Kingbright Top-Emitting SMD Chip LEDs

- 1.0 x 0.5 mm (0402)
- Low power consumption
- Ideal for applications including: backlights, status indicators, Home and smart appliances, Wearable and portable devices, Healthcare applications.

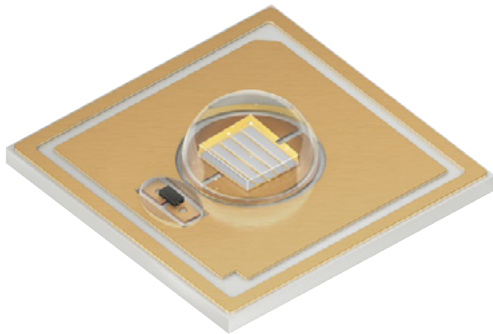


Kingbright

861-0122	KPHHS-1005CGCK Green
466-3611	KPHHS-1005MGCK Mega Green
860-9018	KPHHS-1005QBC-D-V Blue
466-3627	KPHHS-1005SECK Super Bright Orange
466-3633	KPHHS-1005SURCK Hyper Red
466-3649	KPHHS-1005SYCK Super Bright Yellow

OSLON® UV 6060 High-power UV-C LEDs

- Typical optical output 100 mW
- Peak Wavelength 265 nm
- Typical radiation 150°
- Latest flip chip technology in a 6060 ceramic package with UV-C stable lens
- High-power at highest germicidal effectiveness allows fast and efficient treatment of pathogens
- Compact and robust package design allowing flexible design for any application which requires UV-C radiation



amun OSRAM

250-8532	SU CZHEF1.VC-U1U2-L0-V2-250-R18
223-1169	SU CULCN1.VC-GAGD-67-0-100-R18



ELG-100 Series LED Driver

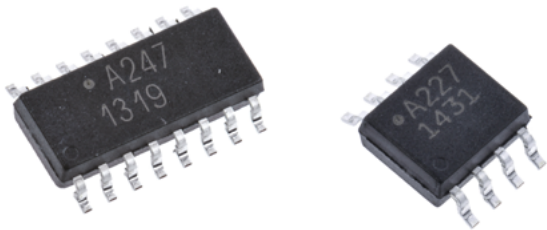
- Fan-less design provides high efficiency rating.
- Wide operating temperature range.
- Rated to IP 65/67 depending on the option selected.
- Designed to provide the optimal flexibility for LED applications.
- Both Potentiometer and PWM signal dimming options available.
- Class 2 power unit.
- Built-in active PFC function.



103-4336	24V	ELG-100-24B
103-4344	42V	ELG-100-42DA
103-4334	54V	ELG-100-54A

Broadcom ACPL-227/ACPL-247 Phototransistor Optocouplers

- The ACPL-227 is a DC-input dual-channel half-pitch phototransistor optocoupler that contains two light-emitting diodes optically coupled to two separate phototransistors. It is packaged in an 8-pin SO package.
- Likewise, the ACPL-247 is a DC-input quad-channel halfpitch phototransistor optocoupler that contains four lightemitting diodes optically coupled to four separate phototransistors. It is packaged in a 16-pin SO package.
- For both devices, the input-output isolation voltage is rated at 3750Vrms.
- Response time, tr, is 2 µs typicallye
- Minimum CTR is 50 percent at input current of 5 mA
- Applications include: I/O Interface for programmable controllers, computers,Sequence controllers, System appliances, measuring instruments and Signal transmission between circuits of different potentials and impedances

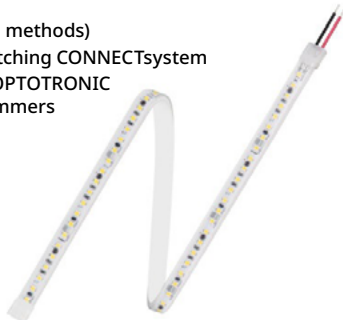


BROADCOM®

693-6807	ACPL-247-500E
693-6784	ACPL-227-500E
818-8259	ACPL-227-50BE
693-6797	ACPL-227-50CE
174-3609	ACPL-247-560E

TEC FLEX Low & High Power Protect LED Flexi Strips

- Flexible and cuttable LED strips
- Luminous flux: up to 2,000 lm/m
- Available with color temperature: 2,700K, 3,000 K, 4,000 K, 6500 K
- Up to 50,000 hrs lifetime @ tc max
- Color consistency in 3 SDCM
- Pre-wired LED strip, simple and quick plug-and-play installation
- Easy mounting on many smooth surfaces thanks to self-adhesive tape at the back
- Type of protection: IP66
- Dimmable (with suitable PWM dimming methods)
- Simplified connection with optional matching CONNECTsystem
- Suitable for use with wide selection of OPTOTRONIC 24 V DALI, DMX and BLE Drivers and Dimmers



OSRAM

241-2392	TECFLEX 1500Lm/ 2700K 90CRI IP66 5M	TFP1500S-G1-927-05
241-2395	TECFLEX SP 1500LM/M 4000K 90CRI IP66 5M	TFP1500S-G1-940-05
210-1552	TECFLEX PROTECT 2000LM/M 2700K 5M	TFP2000S-G1-827-05
210-1553	TECFLEX PROTECT 2400LM/M 4000K 5M	TFP2000S-G1-840-05
210-1554	TECFLEX PROTECT 2000LM/M 6500K 5M	TFP2000S-G1-865-05

Panel Mount Indicator

- IP67
- 24V
- Recessed or prominent style bezel



491-3691	Green satin prominent LED,24Vac/dc 8mm	190403Z1
491-3685	Red satin prominent LED,24Vac/dc 8mm	190403Z3
491-3607	Green satin recessed LED,24Vac/dc 8mm	190503Z1
491-3944	Grn bright satin LED,24Vac/dc 14mm mount	192103Z1
491-3938	Red bright satin LED,24Vac/dc 14mm mount	192103Z3

Würth Elektronik LEDs

- WL-SMCW SMT Mono-color Chip LED Waterclear
- Low energy consumption
- High reliability
- Low current requirement
- Fast switching
- No UV/IR radiation
- Smallest SMT LED package for exceptional brightness
- Top view LED
- Wide viewing angle
- Better solder ability
- Heat dissipation



815-4228	150080BS75000 Blue 0805
815-4221	150080GS75000 Green 0805
815-4225	150080RS75000 Red 0805



Aluminum Electrolytic Capacitors

- Aluminum Electrolytic Capacitors
- Surface Mount Type
- FN series
- 6.3 V to 50 V - High temperature Lead-Free reflow



Panasonic
INDUSTRY

204-3397	EEEFN1V330R
204-3401	EEEFN1V561UP

Chassis Mount Transformers - USTE 100

- Control transformer for electrical isolation of the input and output.



BLOCK

419-7423	USTE100/2X115
419-7467	USTE1000/2X115
419-7439	USTE250/2X115
419-7451	USTE630/2X115

Chassis Mount Resistor - HCL 165 series

- Leaded Ultra slim (7.25mm) 100W Aluminium housed power resistor with high power to size ratio.



TE
Authorized Distributor

254-3806	HCL165J100RCX
254-3808	HCL165J10RCX
254-3822	HCL165J1K0CX
254-3844	HCL165J33RCX

Current sense resistors

- SMT 2512 package 10mOhm resistor 3W and 25A constant current



ISABELLENHÜTTE
Innovation by Tradition

193-0129	SMT current sense chip resistor 2512 10m Ohm	VMS-R010-1.0-U
193-0153	SMT current sense chip resistor 2512 1 Ohm	VMS-1R00-1.0-U
193-0136	SMT current sense chip resistor 2512 5m Ohm	VMS-R005-1.0-U
193-0142	SMT current sense chip resistor 2512 15m Ohm	VMS-R015-1.0-U

ATO Fuse Holder

- ATO Heavy Duty Blade 30A in-line Fuse Holders
- Heavy duty with or without covers Splash-Waterproof
- Includes wire leads



Littelfuse

419-195	0FHA0002ZXJ
738-2784	FHAC0001ZXJ
787-4356	FHAC0001ZXJG
337-5234	FHAC0002LXN

Fuse Block

- Mountable Fuse Blocks Use with Bolt down MEGA® fuses
- Ideal for battery and alternator connections and other heavy gauge cables requiring
- ultra high current protection. Includes protective cover.



Littelfuse

787-4378	02981001ZXT
787-4410	0298200.ZXEH

Automotive Fuse Kit

- Automotive fuse kits
- These selections of automotive fuse kits are specifically designed for use in automotive applications, but can also be used in low voltage electronic applications.
- Featuring MAXI™ Blade Fuses, they have "Diffusion Pill Technology" providing low heat dissipation and excellent time delay characteristics.



Littelfuse

219-9556	00940957XXN
219-9562	00950011XXN



Fuses

- Glass cartridge fuses are ideal for providing protection to devices or internal circuits from short circuits and overcurrent.
- They are deliberately weaker components which, when too much current is drawn, will blow.
- Once the fuse has blown it will need replacing in order to make the circuit complete and allow the flow of current.

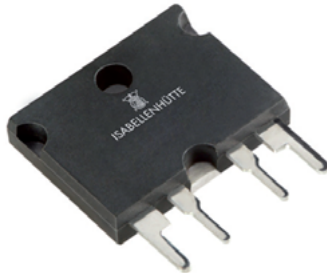


Littelfuse

541-2975	02133.15MXP
541-4375	0217001.MXP

Through hole Current sense resistors - PBV series

- PCB mount precision resistor with up to 10W permanent power, low ohmic values

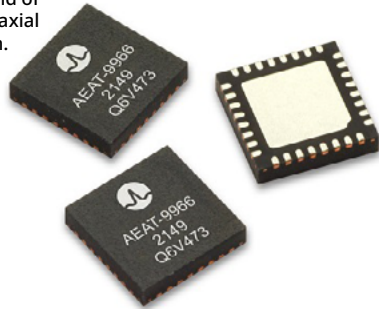


ISABELLENHÜTTE
Innovation by Tradition

210-7495	1m Ohm	PBV-R001-F1-0.5
210-7509	10m Ohm	PBV-R010-F1-0.5
210-7523	50m Ohm	PBV-R050-F1-0.5
210-7527	100m Ohm	PBV-R100-F1-0.5

Broadcom AEAT-9966 Angular Magnetic Rotary Sensor and Eval Board

- The AEAT-9966 is a dual/redundancy angular magnetic rotary sensor that provides accurate angular measurement over a full 360 degrees of rotation.
- Integrated Hall sensor elements with complex analog and digital signal processing single device.
- Wide magnetic field sensor configurations allow On Axis (end of shaft) or Off Axis (side of shaft, axial and radial) modes in application.



BROADCOM

253-9442	AEAT-9966-Q32
253-9443	HEDS-9966PRGEVB

Power Line Filters

- 2 Stage Chassis Mount Filter16A
- FN 2060 two-stage filters are designed for noisy applications requiring good differential and common-mode attenuation



schaffner
MORE POWER TO YOU

219-2915	FN2060-16-06
766-2655	FN3256H-36-33

Wire wound Potentiometer - 534 series

- 22.2mm Panel Mount single gang 2W Potentiometer, Wire wound 10 turn.



VISHAY

The DNA of tech.™	
460-7510	534B1102JL
460-7526	534B1103JL
460-7605	534B1104JL
460-7582	534B1502JLB

Sensirion SCD4x CO2 sensors

- Sensirion's SCD4x sensor builds on the photoacoustic NDIR sensing principle and Sensirion's patented PASens® and CMOSens® technology to offer high accuracy smallest form factor.
- Smallest form factor: 10.1 x 10.1 x 6.5 mm3
- Reflow solderable for cost-effective assembly
- Digital I2C interface
- Integrated temperature and humidity sensor
- SCD40: Base accuracy, specified measurement range 400 –2'000 ppm
- SCD41: High accuracy, specified measurement range 400 – 5'000 ppm, compatible with relevant
- IAQ standards, several power modes



SENSIRION

215-1859	SCD40-D-R1
215-1861	SCD41-D-R1



Sensirion Environmental sensor node

- The SEN5x environmental node is a straightforward, all-in-one sensor solution platform for the accurate measurement of various environmental parameters, such as particulate matter, volatile organic compounds (VOCs), oxidizing gases, e.g. nitrogen oxides (NOx), and humidity & temperature.
- Thanks to proprietary algorithms, the module enables straightforward integration into various applications.
- Particulate matter
- Mass concentration precision ±10%
- Mass concentration range 0 - 1000µg/m³
- Particle size range: PM1.0, PM2.5, PM4 and PM10
- Humidity Typ.
- Relative humidity accuracy 4.5%RH
- Operating relative humidity range 0 - 90%RH
- VOC
- Processed output 0-500 VOC Index
- Measurement range 0 - 1000ppm



SENSIRION

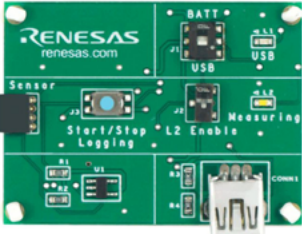
238-9413 SEN54-SDN-T PM, RH/T, VOC

240-9022 SEN55-SDN-T PM, RH/T, VOC, NOx

240-9020 SEN50-SDN-T PM

Renesas Humidity and Temperature Sensor

- Evaluation Kit for the HS4001 Humidity and Temperature Sensor



RENEASAS

244-4464 HS4000-EVK

Sensirion SFC5500 Mass Flow Controllers

- The SFC5500 mass flow controller series is based on the microthermal measurement principle and makes use of Sensirion's proven CMOSens® MEMS Technology.
- Which unlike many devices on the market, does not drift and does not require in-service re-calibration.
- SFC5500 series can cover multiple flow ranges of a traditional mass flow controller in a single device.
- Coupled with multi-gas calibration and exchangeable fittings, the SFC5500 series are suitable for applications in medical, analytical and industrial sectors.
- Accuracy 0.08% FS or 0.8% SP
- Maximum operating pressure 5bar
- Fluidic connector ports Legris
- Supply voltage 14 - 26.4V
- Interfaces Device net, RS485
- Size (LxWxH) 115 x 24.6 x 91 mm



SENSIRION

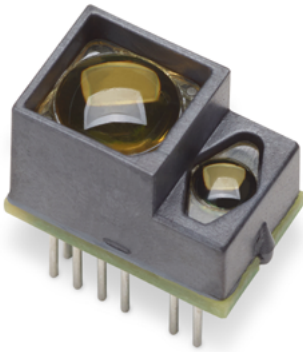
221-1594 SFC5500-0.5slm

221-1596 SFC5500-200slm

221-1595 SFC5500-10slm

Broadcom AFBR-S50MV68B Time-of-Flight Sensor Module

- The AFBR-S50MV68B Time-of-Flight Sensor Module has been developed with a special focus on industrial sensing applications for medium distances of typically up to 10m.
- The module has an integrated 680 nm laser light source
- Field-of-View (FoV) of 12.4° x 6.2° with 32 pixels
- Transmitter beam of 1° x 1° to illuminate between 1 and 2 pixels
- Reference pixel for system health monitoring
- Measurement rates of up to 3 kHz
- Typical distance range up to 10m
- Unambiguous range up to 100m with dual frequency mode
- Operation of up to 100k Lux ambient light
- Works well on all surface conditions
- Single voltage supply 5V, typical 33mA
- Integrated voltage and temperature sensors
- Integrated clock source
- Laser class 1 eye safe ready



BROADCOM®

230-5327 AFBR-S50MV68B

230-5328 AFBR-S50MV68B-EK

Sensirion SLI Liquid Flow Meters

- Designed for integration in demanding flow control systems, the SLI liquid flow meter series is a high precision solution for low flow rates of liquids based on water or hydrocarbons (alcohols, solvents, oil, fuel, adhesives).
- Sensirion's modular approach, which allows the liquid flow meter to be combined with several interface cables, ensures an optimal match and simplifies the integration of a liquid flow meter into a fluidic system.
- The short response time and high precision of the SLI liquid flow meter allow accurate monitoring of highly dynamic processes such as fast dosing operations.
- Accuracy (H2O) 5%
- Repeatability (H2O) 0.5%
- Maximum operating pressure 15bar
- Fluidic connector ports ¼-28 flat bottom
- Supply voltage 4 - 6V
- Average supply current 68000uA
- Interfaces: Analog voltage, Analog current, I²C, RS485
- Size (LxWxH) 58 x 42.5 x 20 mm



SENSIRION

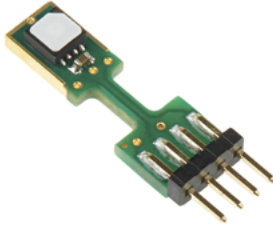
200-9546 SLI-1000 Liquid Flow Meter

200-9547 SLI-2000 Liquid Flow Meter



Sensirion SHT85 Temperature & Humidity Sensor

- The SHT85 digital humidity sensor is Sensirion's best-in-class humidity sensor with a pin-type connector for easy integration and replacement.
- The unique package design allows for the best possible thermal coupling to the environment and decoupling from potential heat sources on the main board.
- The SHT85 features a PTFE membrane dedicated to protecting the sensor opening from liquids and dust according to IP67 without affecting the response time of the RH signal.
- Humidity
- Typ. relative humidity accuracy 1.5%RH
- Operating relative humidity range 0 - 100%RH
- Response time (τ63%) 8s
- Factory calibration
- Temperature
- Typ. temperature accuracy 0.1°C
- Operating temperature range -40 - 125°C
- Response time (τ63%) 5s



SENSIRION

182-6530 SHT85

TE Inclinometers

- The DOG2 MEMS-Series inclinometer dual axis is mainly developed with focus on platform leveling, dynamic engine management,
- tip-over protection and tilt alarm. A fast response time and good accuracy makes this device the ideal choice for mobile leveling applications.
- It features digital signal processing including temperature compensation. The integrated filter improves performance and allows using the sensor in many noisy environments (e.g. vibrations).



200-6116 G-NSDOG2-001 +/- 25°

200-6118 G-NSDOG2-002 +/- 45°

200-6119 G-NSDOG2-003 +/- 90°

TE Altimeter Pressure Sensors

- High resolution altimeter sensors from TE Connectivity
- Fast conversion down to 1 ms
- Low power, 1 µA (standby < 0.15 µA)
- Integrated digital pressure sensor (24 bit ΔΣ ADC)
- Supply voltage 1.8 to 3.6 V
- I2C and SPI interface (Mode 0, 3)
- No external components (Internal oscillator)
- Excellent long term stability
- Hermetically sealable for outdoor devices

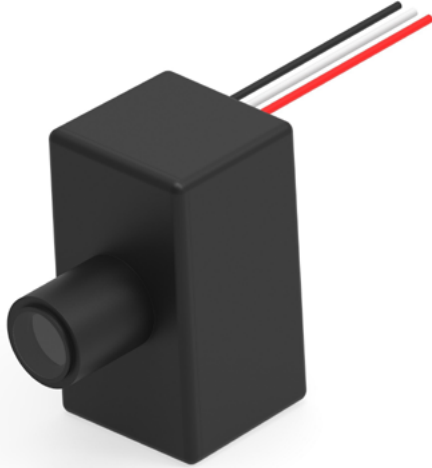


893-7228 MS5803-02BA 2BAR White Gel MS580302BA01-00

893-7219 MS5805-01BA 5BAR White Gel MS580305BA01-00

TE Lighting Photocell Sensor

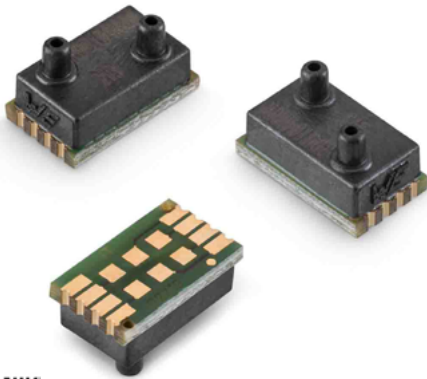
- Lighting Photocell Sensor - Lumawise ALR AA 2000EL Button Photocell, a photocontrol solution for multiple luminaire form factors. Designed to be hardwired internally. Polycarboate lens gives a discrete appearance but tough construction. Applications include Commercial, Industrial, Decorative, Street,& Area lighting, Signage and Flood lighting. Standalone device with in built delay prevents false switching due to light pollution. Meets UL773A requirements, with 10 year life or 20k switching cycles.



271-7466 2393866-1

Wurth Elektronik WSEN-PDUS Differential Pressure Sensor

- MEMS based piezo-resistive sensing principle offering very high accuracy (up to ±0.25% FSS tolerance)
- Different transfer functions from ±0.1 kPa to 1 MPa
- 15 bit digital & 11 bit analogue pressure output resolution
- With embedded temperature sensor, plus analogue & I²C digital communication interface
- Temperature range: -25°C up to +85°C



202-5928 2513130810001

202-5930 2513130810101

202-5932 2513130810201

202-5934 2513130810301

202-5936 2513130810401

Siretta 5G, NB-IoT Antenna

- The Oscar 40 is a great antenna solution covering many popular frequencies in use today.
- Its radome is UV and water resistant making it a great outdoor antenna.
- Suitable for discreet omni antenna applications, where a longer one is undesirable, the antenna out-performs many of the larger variants.
- It is fitted with an aluminium bracket for wall mounting and supplied with a clamp for fitting to a standard mast.
- Supplied as standard with an SMA male connector and 5m or 10m of cable.
- Supports 5G NR / 4G LTE / 3G UMTS / 2G Quad-band GSM
- Supports Dual band WiFi 2.4G & 5G
- Supports Bluetooth / Zigbee / IEEE 802.15.4 / ISM 2.4GHz / ISM 5.8 GHz
- Supports LoRa / Sigfox / IMT 868 MHz / ISM 915 MHz
- Compact size
- Wall or pole mount
- RFID, ISM, WiFi bridging
- Public wireless systems
- Covers cellular/PCS (US and worldwide)



124-8869 OSCAR40/10M/LL/SMAM/S/S/33

Wireless Connectivity

- Infineon's AIROC™ CYBT-213043-02 is a fully certified Bluetooth® and Bluetooth® LE module
- Fully integrated with onboard crystal oscillator, passive components, 256KB onboard flash memory, and the CYW20819 system on chip
- Complies with Bluetooth® core specification version 5.0
- Designed to support a wide spectrum of Bluetooth® applications in home automation, sensors (medical, home, security, and industrial), lighting, Bluetooth® Mesh, or Bluetooth® connected IoT areas

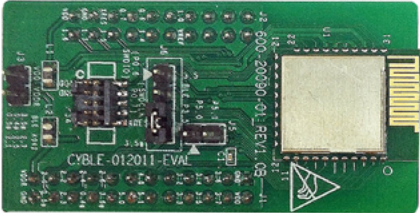


260-1017 CYBT-213043-02 Bluetooth Module

260-1019 CYBT-243053-02 Bluetooth Module

CYBLE-01201x-x0 EZ-BLE Bluetooth Module

- Contains all the necessary components to add low-power Bluetooth BLE wireless connectivity to a project design
- Royalty-free BLE stack compatible with the Bluetooth 4.1 standard
- Two versions are available: one fully qualified and certified and an uncertified module without a screening can for initial lab development only
- PSoC Creator™ provides an integrated design environment (IDE) to configure, develop, program and test a BLE application



124-4197 CYBLE-012011-EVAL

Bluetooth v4 low energy USB dongle

- Bluetooth Smart Dongle



807-7742 BLED112-V1

Mobilemark Heavy Duty Site Antennas

- For very high vibration environments (mining, quarry and oil field construction) the OD-MOD2 series provides a viable solution for a wide area network
- The feed assembly is made of machined aluminum components and is irradiated for weather protection.
- Colinear arrays provide uniform omni-directional coverage
- Unique phasing cancels out-of-phase current distribution, improving performance.



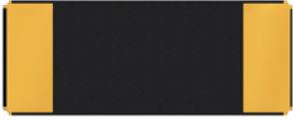
797-5778 OD3-2400MOD2-BLK

797-5780 OD5-2400/5500MOD2-BLK



32.768kHz SMD LOW PROFILE CRYSTAL

- Features:**
- Seam sealed ceramic package offers excellent environmental & heat resistance
 - Extended temperature -55°C to +125°C for industrial applications
- Applications:**
- Commercial & Industrial applications
 - Wide range in communication & measuring equipment



171-2717 ABS07-32.768KHZ-1-T

171-2773 ABS07-32.768KHZ-7-T

171-2839 ABS07-32.768KHZ-T

Omron PCB Relays

- RS offer a wide range of Relay products from throughout Omrons excellent range to cover multiple applications & requirements.



218-2031 G6B-2114P-US DC24

512-9342 G6D-1A-ASI DC24

237-5378 G6RN-1 DC24

807-3911 G9EA-1-B-CA-DC12

366-300 G2R-1-E DC24

369-517 G5V-2 DC24

Battery Disconnect Switch

- Master Battery disconnect Switch IP67
- Designed for heavy duty applications
- Allows personnel to Lock-Out Tag-Out with Padlock or hasp



905-8809 75920

905-8815 880175

PCB Relay Range

- RS offer a comprehensive range of Panasonic Relay products
- Solid State; Power; Signal PhotoMos Signal; High Frequency; Safety



247-4032 ADJH23024

247-4046 AGQ20003

247-4068 AGQ200S12Z

247-4157 AQAD171DL

247-4209 AQV252GA

231-5487 ASFM0245S

IS Series Push Button

- Thin behind-panel depth
- Compact and light
- Plastic button and case
- Excellent tactile feedback
- IP67



236-9446 IP67 Mom Blk round PB switch pre-wired

236-9468 IP67 Mom Red round PB switch pre-wired

373-1656 IP67 Momentary black pushbutton switch

373-1662 IP67 Momentary green pushbutton switch

373-1678 IP67 Momentary red pushbutton switch

PB6 Series Illuminated Push Button Switches

- High Quality IP68 Rated Switches. Invarious Cap Styles and LED Illuminations, Available in Panel Mount & leaded options.
- Applications include Industrial, Communications, Control equipment and Instrumentation.



AUTHORIZED DISTRIBUTOR

239-6372 2396372 - PN OFF/ON FC BLK M1 TERM IP68 500MM LHS

239-6411 2396411 - Pushbutton Switch OFF/ON FC BLK M3 TERM.

239-6415 2396415 - Pushbutton Switch OFF/ON FC RED M1 TERM.

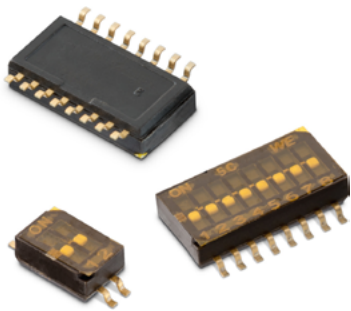
239-6547 2396547 - Pushbutton Switch OFF/ON FC GRE M3 TERM.

239-6562 2396562 - Pushbutton Switch OFF/ON FC BLU M1 TERM

239-6584 2396584 - Pushbutton Switch OFF/ON FC BLU M1 TERM

PCB Switches

- Tact, Rotary, Rocker & Dip & Slide Switches.
- Properties include IP67, Long lifetime; High durability; tight tolerance due to automated production.



254-1752 3 Way SMT Dip Switch 416131160803

254-1811 IP67 SMT Tactile Switch 434153017835

254-1819 SMT Slide Switch 452403012014

254-1770 4 Way SMT Dip Switch IP67 418121270804


254-1780 Rotary Coded DIP Switch 428527320916

254-1821 Through Hole Slide Switch 452404020202




TE PCB Relays

- RS offer wide range of PCB Relays, for multiple applications.
- Including Signal, Telecom, Power, Consumer Electronics, measurement & test, Automotive applications.
- Visit RS for full selection.

 <small>AUTHORIZED DISTRIBUTOR®</small>		
515-509	PCB Mount Signal Relay	IM07TS
256-3654	PCB Mount Power Relay	RP421024
198-6911	PCB Mount Power Relay	RTE24024 1-1393243-0
256-0661	PCB Mount Signal Relay	V23079A1005B301


1.5 Superseal Series

- Comprised of black 6.6 glass filled poly-amide
- 1 - 6 positions
- Plug housings for receptacle contacts, cap housings and tab contact variants
- Pre-assembled secondary lock
- Silicon rubber seals
- Panel or cable mount
- Temperature range of the 1.5 mm pitch superseal series is of -40 to +125°C
- Suitable for powertrain, security, and bo & chassis systems
- Dielectric withstand voltage 1500 Vrms

 <small>AUTHORIZED DISTRIBUTOR®</small>		
314-1328	Superseal 1.5 tab crimp contact	
314-1340	Superseal 1.5 crimp contact 20-16A	
314-1198	Superseal 1.5 2 way plug housing	
314-1255	Superseal 1.5 2 way cap housing black	
366-2061	Superseal 1.5 2 way black cable boot	


Adhesive Lined Heat Shrink Tubing

- Semi flexible polyolefin tubing
- Flame retardant jacket
- Heat shrink ratio of 4:1 meaning when heated this tubing shrinks to a quarter of its original diameter, making it perfect for awkward shaped connectors
- High shrink ratio ensures the tube will be able to fit over larger connectors and still ensure environmental sealing
- High strength bonding due to inner adhesive lining
- Operating temperature -55°C to 110°C
- Heat shrink temperature: 80°C
- Supplied in lengths of 1.2m

 <small>AUTHORIZED DISTRIBUTOR®</small>		
344-0625	Adhesive lined tubing,12-3mm i/d	HTAT-12/3-0-STK
344-0647	Adhesive lined tubing,16-4mm i/d	HTAT-16/4-0-STK
344-0653	Adhesive lined tubing,24-6mm i/d	HTAT-24/6-0-STK
344-0675	Adhesive lined tubing,48-13mm i/d	HTAT-48/13-0-STK
344-0619	Adhesive lined tubing,8-2mm i/d	HTAT-8/2-0-STK


PCB Relays

- RS offer wide range of PCB Relays, for multiple applications.
- Including Signal, Telecom, Power, Consumer Electronics, measurement & test, Automotive applications.
- Visit RS for full selection.

 <small>AUTHORIZED DISTRIBUTOR®</small>		
680-3830	Power Relay PCB Mount	RT424012 6-1393243-3
683-1412	Power Relay PCB Mount	T9AS1D12-12

A Series - Sealed Heavy Duty, Multi-Pin Plastic and Metal Connectors

- Our A Series™ connectors were developed as a high-performance, cost-effective solution.
- For use with Heavy Equipment, Agricultural, Automotive, Military, Alternate Energy, and other demanding interconnect architectures.
- The A Series Family bridges the gap between controlled and harsh environmental conditions to keep you connected
- Extensive range and bulk pack versions available on the RS website

 <small>AUTHORIZED DISTRIBUTOR®</small>		
696-4165	AT04-2P	
696-4174	AT04-3P	
696-4171	AT04-6P	
696-4193	AT06-6S	
696-4253	AT62-16-0122	
174-1618	ATM04-12PA	
696-4222	AW6P	

Amphenol CapLocks & PlugLocks

- Amphenol CapLocks & PlugLocks
- Cybersecurity Locking accessories for MIL-DTL-38999 Series III
- RJFTV & USBFTV Connectors.
- CapLock – Cap to lock receptacle to secure port access
- PlugLock – Locking ring allows plug to lock receptacle to secure
- Applications: Network access, Juman-machine interface securing, Military Computer Port & Maintenance port securing

Amphenol SOCAPEX

248-4998	CapLock with Torx	
248-5004	CapLock with Safety Seal	CAPLOCK21WR
248-5006	CapLock with Safety Seal	CAPLOCK23WR
248-5012	PlugLock with Torx	PLUGLOCK11TX
248-5019	PlugLock with Torx	PLUGLOCK17TX
248-5026	PlugLock with Torx	PLUGLOCK23TX
248-5031	PlugLock with Safety Seal	PLUGLOCK9WR



Amphenol PowerLok

- Amphenol PowerLok Connectors use RADSOX technology, designed to be compact and robust.
- Features include low insertion force/high cycle durability, with secondary lock.
- Provides easy to use, cost effective solutions, for applications including Energy storage, power distribution & EV/HEV.
- Visit RS to see full range of PowerLok series & products.

Amphenol Industria

239-0236	PowerLok 500 Male Receptacle	PL00Y-501-10D10-2
239-0265	PowerLok 300 Male Receptacle	PL082Y-301-10M8
239-0282	PowerLok 300 Female Connector	PL182X-301-70-5
239-0317	PowerLok 500 Female Connector	PL18X-501-95-2-5
239-0335	PowerLok 300 Female Connector	PL283X-301-50

ArmorIPX - Sealed Enclosures for Electronic Control Modules

- Amphenol Sine Systems' Armor IPX™ Family of Sealed Enclosures provides superior protection for printed circuit boards and electronic control modules in harsh environments and off-road applications
- The Armor IPX™ electrical interface is established with the compact AT/ATM Header Systems featuring optional keying and sealed 90° moulded pins
- Examples shown, priced each. Bulk packs also available on the RS website

Amphenol Industria

195-6028	AIPXE-325X4A	
194-9886	AIPXE-325X4B-E017	
195-6036	ATM13-12PA-12PB-BM01	
194-9890	ATM13-12PA-R008	
195-6058	ATM13-12PC-12PD-BM01	

Audio Accessories

- RS Continue to increase its offer with additions to its Re-An range of speakers, connectors and accessories, for all your audio requirements.
- Visit RS to discover full range of products.

NEUTRIK

719-1872	XLR Connector Female	NC3FD-L-B-1
253-5282	Auxiliary Cable	NRA-TT 1.5FT-BLACK
880-8114	3.5mm Jack Connector	NYS231L
251-9096	Re-An Loudspeaker Connector Plug	RLS4FC
251-9107	Re-An Jack Plug	RP2RC-B
251-9115	Re-An Jack Plug	RP3C

Amphenol's Terrapin Series USB-C Connectors

- Amphenol's Terrapin Series extension to now include USB-C Connectors.
- Providing sealing and reggedised connector protection for off the shelf USB-C Cables or almost any design.
- IP68 Environmental Seal (mated 2 meters for 1 hour), Optional metal or rubber caps for dust and water ingress protection.
- Visit RS for full range of Terrapin products.

Amphenol LTD

273-2557	Terrapin Receptacle Dust Cap	390-5063-10-130-03
273-2558	Terrapin Plug Dust Cap	390-5064-10-130-03
273-2559	Terrapin USB Circular Connector Female	SCE2USB3-B-01T10MN-003-SA
273-2560	Terrapin USB Circular Connector Male	SCE2USB3-B-76A10FN-001

ATM Series - Rectangular Connectors

- ATM Series™ connectors are a high-performance, cost-effective solution specifically designed for smaller AWG applications, while still maintaining the strengths of the AT Series™ product line
- Examples shown. Extensive range and bulk pack versions available on the RS website

Amphenol Industria

174-1600	8 Pin Receptacle Key Position A	ATM04-08PA
174-1585	6 Pin Plug, Strain Relief	ATM06-6S-SR01GY
195-5864	6P Str Flange Rcp, Grey,Tin Cont Inc	ATM15-6P-BM03
174-1576	6 Pin Receptacle Wedge	AWM-6P

Bulgin's X Series Push-Pull Connectors

- Bulgin's X Series Push-Pull Connectors.
- Secure, push pull latching system; high density panel spacing; 360 degree EMI Shielding;
- Quick mating & unmating.
- For high quality applications including medical, instrumentation, military & comms.

bulgin

251-7538	Push Pull Circular Connector 6 Contact	
251-7542	Push Pull Circular Connector Socket 4 Contact	
251-7545	Push Pull Circular Connector Socket 2 Contact	
251-7547	Push Pull Circular Connector Socket 3 Contact	
251-7561	Push Pull Circular Connector Socket 4 Contact	
251-7610	Push Pull Circular Connecto Plug 6 Contact	



D-sub Connector

- SUBCON
- Wide operating temperature range between -20 °C and +75°C
- Screw connection makes wiring simple
- Compact dimensions
- Copper contacts are resistant to corrosion in humid areas
- 50V voltage rating
- IP20 rating means it's touch-proof and resistant to objects bigger than 12.5mm



220-5156	9way 45deg D skt w/backshell,1A 60Vdc/ac
220-5162	9 way 45 deg D plug w/backshell,1A
220-5184	15 way 45 deg D plug w/backshell,1A
220-5207	25 way 45 deg D plug w/backshell,1A

Duramate AHDM - Metal Circular Connectors

- Duramate™ AHDM environmentally sealed multi-pin metal circular connector series.
- Provides an economical quick-connect bayonet locking system manufactured to withstand the challenges and complexities of harsh environment in off-road applications.
- Examples shown. Extensive range and bulk pack versions available on the RS website



195-0843	Connector Female 14 Contact IP67, IP69K	AHDM06-18-14SR
195-0845	Connector Male 20 Contact IP67, IP69K	AHDM06-18-20PN
195-0927	Connector Backshell	AHDMBS-18-002

Harting Next Level Modular Connectors

- Introducing the next level of modular connectors. Can be easily integrated into existing systems & frames.
- Offering lighter, smaller connectors with up to 50% space saving, maximum flexibility, quicker installation times.
- Sustainability through consistent modularisation.



Pushing Performance
Since 1945



260-7134	Han-Modular Crimp Connector	09140006453
260-7145	Han Modular, Dummy Cube	09149001000
260-7147	Han Modular, Dummy Cube	09149002000
260-7149	Han-Modular Connector Cube 4 Way	09149041001
260-7151	Han-Modular Connector Cube 4 Way	09149041101
260-7157	Han-Modular Connector Cube 6 Way	09149061001

DT Highspeed Sealed Connectors

- 1000BASE-T1 (1Gb) Type A (15m) and Type B (40m)
- Jacketed shielded twisted pair (STP)
- 0.50mm² (20AWG) to 0.35mm² (22AWG)
- IP67, IP69K and USCAR2
- Operating Temperature of -40°C to 125°C
- Cable-to-cable, cable-to-board/device
- DEUTSCH size 20 contacts termination



AUTHORIZED DISTRIBUTOR



261-6569	DTHS, CABLE ASSY, FEMALE TO FEMALE, 3M	2382948-4
261-6570	DTHS, CABLE ASSY, FEMALE TO FEMALE, 5M	2382948-5
261-6571	DTHS, CABLE ASSY, FEMALE TO FEMALE, 10M	2382948-7
261-6572	DTHS, CABLE ASSY, FEMALE TO MALE, 3M	2382949-4
261-6573	DTHS, CABLE ASSY, FEMALE TO MALE, 5M	2382949-5
261-6574	DTHS, CABLE ASSY, FEMALE TO MALE, 10M	2382949-7

FMK Series D-sub connectors

- Broad operating temperature range of -35°C to +100°C for use with heavy-duty applications
- Width of 15mm provides enough space to accommodate special D-sub connectors
- Die Cast Zinc Housing material
- Strain relief to prevent cracking and bending for a more reliable signal transmission



291-6294	9 Way r/a Metal DConn Hood, 9.5mm Cable
291-6187	9 Way Metal D Conn Hood, 9.5mm Cable
291-6193	15 Way Metal D Conn Hood, 8.5mm Cable
291-6200	15 Way Metal D Conn Hood, 12.5mm Cable

Hartings Type 2 Charging Cables & Connector Solutions

- Hartings Type 2 Charging Cables & Connector Solutions offering high capability in e-mobility charging.



Pushing Performance
Since 1945



234-5797	32A Mode 3 EV Charging Cable 5m	08914090102A0
234-5799	32A Mode 3 EV Charging Cable 5m	08914090107A0
234-5804	32A Mode 3 EV Charging Cable 5m	08914090109A0
234-5806	20A Mode 3 EV Charging Cable 5m	08914090301A0
234-5819	20A Mode 3 EV Charging Cable 7.5m	8801754004440A1



Hirschmann Test Leads

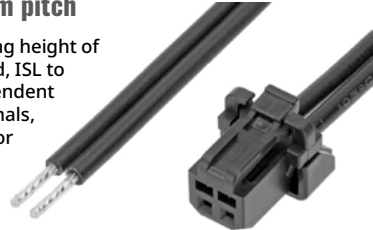
- Hirschmans popular range of Test leads.
- IncludingMAL S Safety Adaptors; SEB Safety Sockets
- AK2 S Crocodile Clips; MAL 2800S Tets leads with onward connection capability



252-1266	Alligator Clip Black	930319100
252-1268	Alligator Clip Red	930319101
252-1291	Fork Terminal	930585103
252-1295	Fork Terminal	930585107
252-1322	Test Lead 500mm Blue	934041102
252-1375	Test Lead 250mm Green	934044104

Micro-One Connectors 2.00mm pitch

- Micro-One headers feature a potting height of up to 7.00mm to cover the PC board, ISL to prevent terminal back-outs, Independent TPA retainer to help position terminals, Meet EU regulations (IEC60335-1) for the home appliance market



2457455	219653-1020
245-7472	219653-1032
245-7482	219653-1042
245-7494	219653-1052
245-7501	219653-1061
245-7511	219653-1080

RF Coaxial Cable

- Sucoflex
- 610mm length
- High flex life
- Excellent insertion and return loss
- Male to Male
- 50 Ω characteristic impedance
- Ideal solution for precise measurements in critical laboratory conditions



271-3197	Time delay 70GHz SF570E 24inch	PMASF570E/11PC185/11PC185/24in
271-3198	Time delay 70GHz SF570E 36inch	PMASF570E/11PC185/11PC185/36in
271-3201	70GHz SF570E M/1.85 M 24inch	SF570E/11PC185/11PC185/24in
271-3202	70GHz SF570E M/1.85 M 36inch	SF570E/11PC185/11PC185/36in
271-3203	Ruggedized 70GHz SF570S 24inch	SF570S/11PC185/11PC185/24in
271-3204	Ruggedized 70GHz SF570S 36inch	SF570S/11PC185/11PC185/48in

IPT-HD Power Bolt High Voltage Connectors

- IPT-HD Power Bolt High Voltage Connectors -
- For increased connector EMC Performance and assembly efficiency to ensure safety and quality of hybrid and electric vehicles
- Especially for vibration and shielding performance.
- IP67, IP68 & IP6K9K sealing rated.
- Low-contact resistance sheilding,
- Handles excessive engine-level vibrations. MCU, E-xle and E-motor applications. ISO Compliant/LV216.



AUTHORIZED DISTRIBUTOR



260-4477	Power Bolt Automotive Connector	2355148-4
260-4478	Power Bolt Automotive Connector	2355148-5
260-4480	Power Bolt Shielding Sleeve	2355150-8
260-4481	Power Bolt Seal & Cavity Plug	2355151-3
260-4483	Power Bolt Automotive Connector Cover	2355153-5
260-4484	Power Bolt Automotive Connector Cover	2355153-5

Pre-Crimped Lead Squba 3.6

- Ideal for all prototype and pre-production requirements, Suitable for wire-to-wire applications and when cut in half wire-to-board applications, Pre-crimped and fully tested cables decrease time to market, UL-listed cables with high-quality approved materials



233-4683	215346-1104
233-4697	215346-1113
233-4777	215347-1121
233-4831	215348-2101
233-4852	215348-2115
233-4858	215348-2123

RJ45 Ethernet Connector

- Bulgin Buccaneer Series
- Front panel mounted
- IP68 waterproof and dustproof
- Single hole fixing
- Shielded system
- Cat5e or Cat 6a compliant
- Data rate up to 100MHz
- Chemical resistant
- Flame retardant
- Standard RJ45 patchcord can be plugged into rear
- Comes with panel sealing gasket



468-6232	IP68 Cat5e RJ45 panel mounted coupler
468-6226	Buccaneer IP68Cat5e RJ45 cable connector
660-1463	Panel Mount Ethernet Connector Flange



TE M8/M12 Cable Assembly

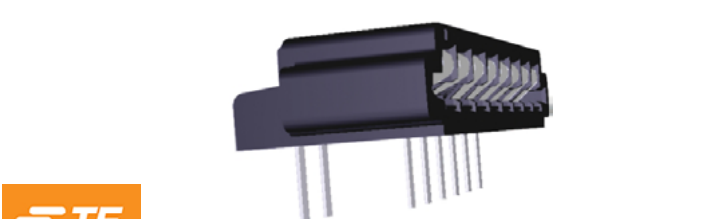
- TE Connectivity's M8/M12 cably assy/connector series, designed for Factory & Industrial Machine Automation, and Control applications.
- Providing a solution for increased needs of sensor connections that safely and reliably ensure communication in the Inustrial Environment.
- Meets IP76 & UL1863 specifications.
- Lengths 0.5m to 30m.
- Visit RS for full range of Sensor Connection solutions.



249-6336	M12 Circular Connector 4 Contact Socket
249-6340	M12 Circular Connector 5 Contact Socket
249-6342	M12 Circular Connector 4 Contact Socket
249-6349	M12 Sensor Actuator Cable Right angle
249-6351	M12 Sensor Actuator Cable Right angle Male
249-6354	M12 Ethernet Cable Femail

Trio-Mate Flexible Film Connectors

- 2.54mm centreline FFC/FPC connectors with preloaded socket contacts
- Available in vertical and right angle cable mount styles
- High extraction force
- Reusable 25 times with the same cable thickness



	AUTHORIZED DISTRIBUTOR®
164-2641	5-487508-7

WR-CXASY Series

- RG-174/U flexible coaxial cable
- Braided shielding
- 1 GHz operating frequency range
- Operating temperature -20 °C to +80 °C



	WÜRTH ELEKTRONIK MORE THAN YOU EXPECT
205-3726	Flexible Coaxial Cable RG-174/U, SMA Rig
205-3732	Flexible Coaxial Cable RG-174/U, SMA Str
205-3734	Flexible Coaxial Cable RG-174/U, SMA Str
205-3728	Flexible Coaxial Cable RG-174/U, SMA Str
205-3730	Flexible Coaxial Cable RG-174/U, SMA Str

Test Sockets and Leads

- Staubli's new range of their hugely popular Banana Test sockets & leads, replacing and enhancing from current range.
- Visit RS Website for details on referrels.



261-3794	Test Lead Black 500mm	64.1033-05021
261-3810	Test Lead Black 1m	64.1034-10021
261-3812	Test Plug Black 32A Gold Plated	64.1045-21
261-3814	Test Plug Blue 32A Gold Plated	64.1045-23
261-3801	Test Lead 19A 1m	64.1033-10022
261-3819	Test Socket Tab Termination Gold Plated	64.3010-22

USB Type-C Connectors

- Deliver data, power and A/V through a single connection at faster speeds
- Enable easy, reliable mating with reversible design
- Allow backward compatibility to other USB connectors using converter cables or adaptors
- Increase power capability up to 100W at 20V




	AUTHORIZED DISTRIBUTOR®
123-5255	USB TYPE C, REC OFFSET 0.65MM DUAL SMT
164-9111	USB TYPE C, REC OFFSET 0.65MM DUAL SMT
164-7135	USB 3.1 Type C Receptacle Mid-mount
909-7110	USB 3.1 Type C Receptacle Mid-mount
123-5254	SPLASH PROOF USB TYPE C REC, DUAL SMT
164-9324	SPLASH PROOF USB TYPE C REC, DUAL SMT

Wurths M12 Circular connector range

- New product - Wurths M12 Circular connector range, field attachable, panel connectors and cable ssemblies.
- Provide waterproof and Dustproof connections without loss of connection and signal.
- A coding, with screw locking system. Up to 5A rating, and up to 250V rating.
- Applications include Industrial Automation, Machine manufacturing, DC Power supply, Actuator technologies & Security.
- Visit RS for full range.




	WÜRTH ELEKTRONIK MORE THAN YOU EXPECT	
271-7527	M12 Circular Connector 4 Contact Socket	643060100604
271-7537	M12 Circular Connector 8 Contact Plug	643110100408
271-7551	M12 Circular Connector 4 Contact Plug	643150100604
271-7601	M12 Circular Connector 5 Contact Plug	643250100305
271-7625	M12 Circular Connector 5 Contact Socket	643280100305
271-7705	M12 Circular Connector 5 Contact Plug	643712100005



Charging Inlets for Industrial & Commercial Vehicles

- TE Connectivitys Charging Inlets for Industrial & Commercial Vehicles.
- Enable fast, safe charging. Withstand 10,000 mating Cycles while charging @ 250Vac and 1000Vdc.
- Modular Design with Cable exists to left or right side. -40'c to +85'c operating temperature range.
- Enhanced safety - Integrated actuator for end position sensing & Intergraed PT1000 temperature sensor for enhanced temperature monitoring.





AUTHORIZED DISTRIBUTOR®

261-4523	Charging Inlet Right Flap Assembly	2358664-2
261-4525	Charging Inlet Right Flap Assembly	2358664-4
261-4527	Charging Inlet Right Flap Assembly	2358664-6
261-4529	Charging Inlet Right Flap Assembly	2358664-8

Fan & motor solutions

- RS offer a huge comprehensive range of Fan & motor solutions.
- Providing energy efficient, intelligent solutions for virtually any ventilation or drive technology task.
- Applications include IT/Telecoms, heating, ventilation, air-dconditioning, refrigeration, domestic appliances, industrial engineering, and automotive.
- Visit RS for our full range of products.



101-8052	Axial Fan AC	4650N
211-9314	Axial Fan AC	4650Z-876
217-4204	Centriugal Fan 230V	R2E220-AA40-05
218-3040	Asial Fan AC	W2E200-HH38-01
221-342	Fan Filter	PMFA120T

ECK Contactors

- ECK range of contactors designed for control in new energy applications.
- Offer innovative and reliable solution for EV Charging stations, solar inverters, battery energy storage systems, automated-guided vehicles & e-Forklifts.
- Hermetically seald with ceramic sealing technology for safe and reliable use, and small for space saving.
- Can be used in 1000VDC system applications.



260-4191	Contactor 1 Pole 200A 35 VDC	1-2071567-1
260-4198	Contactor 1 Pole 150A 36 VDC	2071567-2
260-4203	Contactor 1 Pole 200A 36 VDC	2-2071567-2
260-4196	Contactor 1 Pole 150A 36 VDC	ECK150HAAPA / 2071567-1
260-4194	Contactor 1 Pole 200A 36 VDC	ECK200AAAPA / 1-2071567-2
260-4201	Contactor 1 Pole 200A 36 VDC	ECK250HAAPA / 2-2071567-1



101-8052	Axial Fan AC	4650N
211-9314	Axial Fan AC	4650Z-876
217-4204	Centriugal Fan 230V	R2E220-AA40-05
218-3040	Asial Fan AC	W2E200-HH38-01
221-342	Fan Filter	PMFA120T

LCD Colour Displays - Touch screen

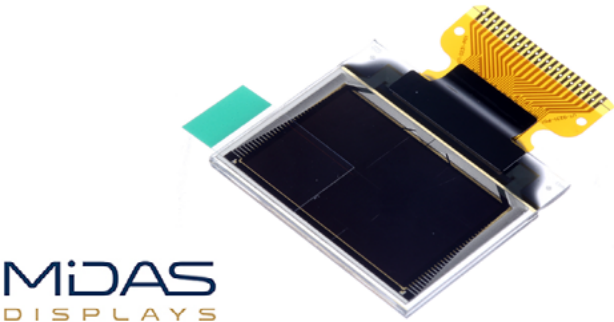
- LCD colour displays are flat panel displays that you find on your computer or mobile phone that use liquid crystals to switch pixels on and off to produce a specific colour.
- A popular type of LCD display is the TFT LCD display module or TFT panel that uses TFT (Thin-Film Transistor) technology.



136-9923	gen4-IoD-32T
125-7948	gen4-uLCD-43DCT-CLB
125-7952	gen4-uLCD-70DCT-CLB
125-7951	gen4-uLCD-70DT
902-8653	uLCD-32PTU
902-8666	uLCD-70DT

OLED Displays

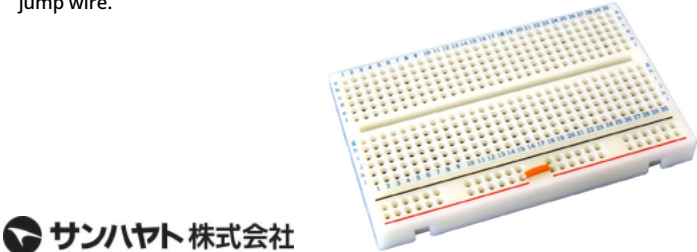
- OLED displays are electronic visual displays based upon organic light-emitting diode (OLED) technology. Like other display types, an OLED Display can be used to present images, text and video a viewer.



823-5973	MCOT096064AZ-RGBM
823-5920	MCOT128064BY-WM

Breadboard

- Sunhayato Small breadboard convenient for assembly and storage of small circuits.
- The separated red power line is already connected with a jump wire.



 サンハヤト株式会社
189-2277 SAD-101

LCD Monochrome Displays

- LCD monochrome displays are flat-panel displays used in electronic circuits.
- They use the light-modulating properties of liquid crystals to display black and white images, such as preset words, digits and displays, as found for instance on a digital clock or calculator.



 Displaytech Ltd.
a seacom company

712-6049	128240D-FC-BW-3
532-6385	162B-CC-BC-3LP
532-6565	202A-BC-BC
627-1668	32128A-FC-BW-3
135-9754	MC42005A6W-FPTLW-V2
135-9756	MC44005A6W-FPTLW-V2

Touch Screen Overlays

- A touch screen sensor is the part of a touch screen device that takes an input from the display screen and translates it into a suitable output action.
- Touch screen sensors are layered on top of electronic visual displays and allow direct interaction with the information shown there.
- Some touch screens require special equipment, such as a stylus, while most can be operated using your fingers.





710-5250	9545
476-466	AST-065B080A
476-454	AST-084A080A
476-422	AST-121A080A

Copper PCB, FR4, 1 sided, 300x200x1.6mm

- CIF Single-Sided Copper Clad Board FR4 With 35µm Copper Thick, 200 x 300 x 1.6mm
- High-quality layered untreated copper-plated boards.
- Eight layers of glass cloth.
- Graving or touch-up pens are available separately. Product will be packaged in individual protective plastic bags.



 C.I.F

219-2123	AD20
----------	------

RS PRO PLA Filament

- High-quality polylactic acid (PLA) material
- Hardens rapidly without deforming for accurate prints
- Made from plant-derived sugars, it is biodegradable and environmentally sustainable
- 1kg reels





832-0214	Black 1.75mm
832-0264	Black 2.85mm
832-0223	White 1.75mm
832-0273	White 2.85mm
832-0226	Blue 1.75mm
832-0276	Blue 2.85mm
832-0245	Silver 1.75mm
832-0295	Silver 2.85mm
832-0220	Red 1.75mm
832-0270	Red 2.85mm

RS PRO 3D Printing Acetone

- Can be used to improve the adherence of the ABS plastic to the printing bed in the 3D printing process
- Fast Evaporation/ drying
- Helps to give a smooth finish to your finished products
- Colourless
-





918-1082	1L
----------	----

RS PRO Replacement Printer Nozzles

- Standard M6 thread size for maximum compatibility
- Brass construction



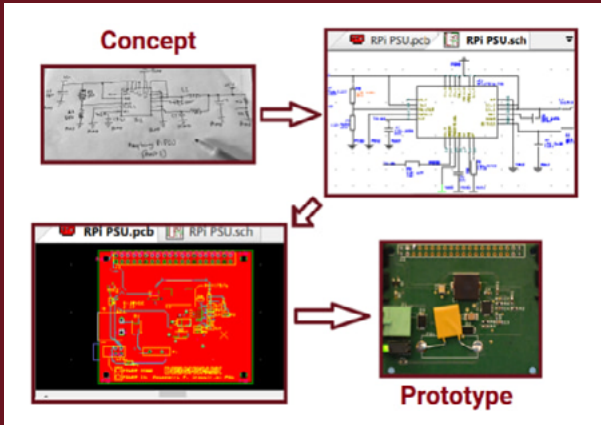


173-4714	0.2mm
173-4715	0.3mm
173-4716	0.4mm
173-4717	0.5mm
173-4718	0.8mm
173-4719	1.0mm



DesignSpark PCB

- Go from concept sketch to prototype, and further
- Choose DesignSpark PCB for your circuit board design needs, as it has the right set of tools to help you save time, money and prevent errors.
 - Start your prototyping journey with our free-of-charge software, and upgrade anytime to our Creator or Engineer paid subscription plans for advanced features.





RS PRO Soldering Station

- ESD safe
- °C and °F switching, convenient for operators
- Heating element malfunction alert
- Low-voltage heater separated from power supply to keep soldering work safer
- Replaceable heating element and soldering tip, reducing consumable replacement cost
- Split design, easy to place
-



236-3538 60W, 240V ac 150 450°C

Electrical Soldering Iron

- Automatically sleep 10 minutes after stopping operation
- Automatically shutdown 20 minutes after sleep
- Temperature unit is °C and °F switching
- Build in PID system
- LCD display
- Quick temperature adjustment



RS PRO Compact Mini Anti-Static Solder Sucker De-soldering Gun

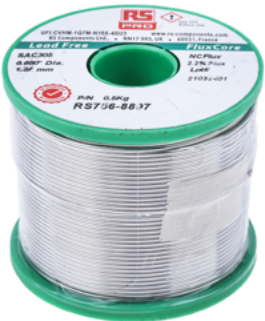
- Solder sucker, desoldering gun.
- Compact mini model.
- Smaller than a standard model.
- Anti-Static model



479-5904 154mm length

Lead-Free Solder

- Resin-based, SAC305 lead free solder wire that utilises a synthetically refined resin and effective activator package
- The alloy used in this solder wire conforms to J-STD 006 and contains 96.5% tin, 3.0% silver and 0.5% copper
- Melting point is 217-219°C



2363539 240V ac, 65W

Solder Tips

- Range of copper solder tips for use with RS PRO digital solder station



799-8951	Flat 2.4mm
799-8960	Chisel 1.6mm
799-8963	Chisel 2.4mm
799-8967	Chisel 3.2mm
799-8957	Chisel 1.2mm
799-8954	Round 2.5mm
799-8945	Knife 2mm



800-7649	
756-8875	
756-8884	
756-8893	
800-7655	
800-7642	
756-8913	
756-8897	



Flux-Off Rosin Flux Remover

- Fast drying and safe flux remover for spot cleaning of flux and other contaminants found in electronics repair and rework
- No rinsing required after use
- 200ml aerosol with brush



298-7921

Multicore Lead-Free Solder

- 96SC Crystal 400 no-clean solder with incorporated flux
- Good spread on copper, brass and nickel
- Sn 95.5%, Ag 3.5%, Cu 0.7%



226-136	0.25mm 250g
226-243	0.5mm 250g
226-237	0.7mm 500g
226-215	1.0mm 500g

No Clean Desoldering Braid

- De-soldering braid packaged in static dissipative bobbins
- Significantly reduces rework/repair time
- Minimises the risk of damage to the board
- Patented non-corrosive, halide free, organic no-clean flux
- Length 1.5m



314-3289	0.8mm
314-0987	1.5mm
314-3302	1.5mm
314-0993	2.0mm
314-1003	2.8mm

9g Flux Pen

- Handy solder flux pen is ideal for surface mount rework
- Quick-drying, supplied in a handy pen format for precision and control
- Zero halide content so no cleaning is required



508-6374

Felder Lottechnik Wire

- 183°C Melting Point



104-7167	0.75mm Lead solder
104-7173	1mm Lead solder
104-7189	1mm Lead solder
104-7268	2mm Lead solder

Desoldering Tool

- Professional tool used to cleanly remove solder
- Released by push button and re-primed by a plunger, the solder sucker picks up the debris by sucking it up



479-4197



Anti-Static Bags

- Zipper topped bags for protecting sensitive equipment from ESD damage
- Dissipative outer section, anti-static interior
- Sold in packs of 10



431-9538	102 x 152mm
431-9544	152 x 203mm
431-9550	254 x 305mm
431-9566	305 x 406mm
431-9572	457 x 457mm

Adjustable ESD Wrist Strap and Cord Sets

- Comfortable & adjustable wristband with an easy to use adjustable clip which makes taking on & off easy
- 1.8m coiled cord provides lots of movement & flexibility



392-163	Wrist strap only
287-7385	Wrist strap & cord 10mm stud to stud
287-7379	Wrist strap & cord 10mm stud to croc clip

Anti-Static Wheel with Rubber Tyre

- A hard wearing and cost-effective solution to anti-static proofing.
- 100mm diameter with rubber tyre
- 10kΩ max resistance
- Plain sleeve bearing is 6.0mm id



448-9946	100mm diameter
----------	----------------

Cleanroom Tacky Mat

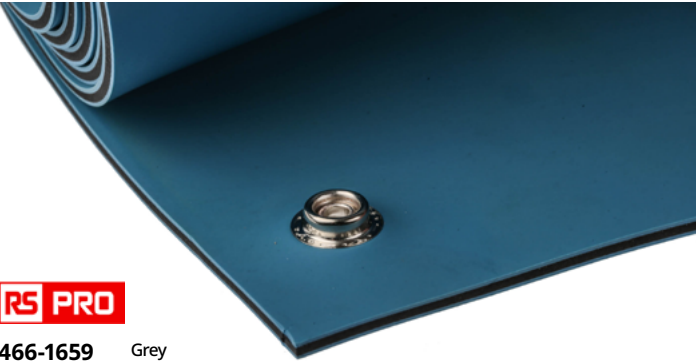
- LDPE Floor Mat
- Remove contamination on contact
- Peel to expose a clean surface (30 sheets)
- No washing or cleaning of mats with messy fluids and mops
- Use with or without a frame, low profile construction
- Full adhesion bottom holds floor securely yet easy to remove and leaves no residue
- Numbered corner tabs for easy removal of the used sheet
-



829-5293	Blue, 1.14m x 660mm x 1.65mm
829-5281	Blue, 1.14m x 460mm x 1.65mm
829-5287	White, 1.14m x 460mm x 1.65mm

ESD Safe Mats

- Bench mat made of a conductive layer with a static-dissipative layer above and below
- Ideal for use on benches or floors
- Has 10mm studs on each corner
- 600 x 1200 x 3.2mm



466-1659	Grey
466-1643	Blue

RS PRO ESD Tape

- Used for packaging
- Anti-static
- Clear colour
- Complies with EN 61340-5-1
- Non-conductive
- Dissipative
- Logo text/logo on tape
- Not suitable for use in a cleanroom



443-9834	48 mm x 36 m ESD Safe Tape
----------	----------------------------



HyFlex 11-100 Nitrile Foam Knitted Glove

- Specially designed for work in microelectronics where electrostatic discharge must be avoided.
- ESD knitted protective glove
- Nitrile foam coated palm
- Slim design improves handling of ever smaller components



234-8216	Size 6, XS, Bag of 12	11100060
234-8217	Size 7, Small, Bag of 12	11100070
806-4706	Size 8, Medium, 1 Pair	11100080
234-8218	Size 8, Medium, Bag of 12	11100080
806-4715	Size 9, Large, 1 Pair	11100090
234-8219	Size 9, Large, Bag of 12	11100090

RS PRO Latex ESD Finger Cots

- Ideal for use in your ESD-safe (electrostatic discharge) working environment as they won't restrict your hands.



266-2896	Size 10, XL, 1 Bag of 100
829-5174	Size 10, XL, 1 Box of 720
266-2903	Size 10, XL, 1 Bag of 720
241-8425	Size 9, Large, 1 Bag of 720
829-5170	Size 9, Large, 1 Box of 720
829-5168	Size 7, Small, 1 Box of 720
266-2874	Size 9, Large, 1 Bag of 100
241-8144	Size 7, Small, 1 Bag of 720
241-8403	Size 8, Medium, 1 Bag of 720
266-1786	Size 7, Small, 1 Bag of 100
266-2868	Size 8, Medium, 1 Bag of 100
829-5177	Size 8, Medium, 1 Box of 720

Electrolube 250ml Anti-Static Spray

- Eliminates static discharges and prevents reoccurrence
- Prevents damage to voltage sensitive components and circuits
- Supplied in a pump action bottle for use in hazardous working environments
- Safe on delicate surfaces will not harm plastic surfaces which may be attacked by solvents
- Provides long term effects
- Shelf life is 48 months



1558184	250ml
---------	-------

RS PRO ESD Laboratory Coats

- Electro-Static Discharge (ESD) lab coat, is ideal for all your laboratory, science, medical and engineering work.
- Fitted with two side pockets and one breast pocket
- Closure buttons
- Complete with ESD symbol



789-8090	XL
789-8087	M
789-8081	L
789-8084	S
789-8093	XXL

SCS Heel Grounder

- Features a D-ring style strap and an elastic hook and loop for adjustability.
- Designed and manufactured for comfort, durability and cost-effectiveness.
- Cntains a current limiting resistor, which protects the operator from accidental exposure to electricity.
- Must be worn on both feet to maintain ground contact while walking.



838-1209	Heel Grounder
----------	---------------

Uvex 68722 Series

- Soft padding on dust tongue and collar
- ESD safe
- Dirt-resistant and easy lacing system
- Extremely comfortable to wear



266-2838	UK 5, EU 38	6872238
266-2839	UK 6, EU 39	6872239
266-2840	UK 6.5, EU 40	6872240
266-2841	UK 7, EU 41	6872241
266-2842	UK 8, EU 42	6872242
266-2843	UK 9, EU 43	6872243
266-2844	UK 10, EU 44	6872244
266-2845	UK 10.5, EU 45	6872245
266-2847	UK 11, EU 46	6872246
266-2848	UK 12, EU 47	6872247
266-2849	UK 13, EU 48	6872248
266-2850	UK 14, EU 49	6872249
266-2851	UK 14.5, EU 50	6872250

Digital Multimeter Benchtop

- 6.5 digit basic Truevolt DMM with Truevolt technology for greater accuracy and quicker measurement insights.
- Standard 3-year Warranty.



777-7101	75 ppm basic DCV accuracy, DC current measurement range from 100 µA to 3 A	34460A
777-7104	35 ppm basic DCV accuracy, DC current measurement range from 100 µA to 10 A	34461A
867-2287	30 ppm basic DCV accuracy, Test low-power devices with 1 µA range and pA resolution	34465A

Digital Multimeter Benchtop

- 7.5 digit Truevolt DMM with Truevolt technology for greater accuracy and measurement insights. 16ppm basic DCV accuracy, 50K readings/s.
- Measure with confidence, with high basic DCV accuracy of 16 ppm
- Test low power devices with 1 µA range and pA resolution



867-2280	Digital multimeter, 7 1/2 digit, basic Truevolt DMM	34470A
----------	---	--------

Data Aquisition Benchtop

- Built-in USB memory port lets you conveniently collect data on a flash drive
- Autocalibration compensates for temperature fluctuations to ensure accuracy
- Standard 3-year Warranty



177-1105	No GPIB	DAQ970
197-6845	With GPIB	DAQ973

InfiniiVision 200X Series Digital Bench Oscilloscope

- Built-in digital voltmeter and frequency counter for flexible measurement options
- USB 2.0 and LAN connectivity for ease of connection and data transfer to a PC
- Standard 3-year Warranty



200-5274	2 channel without Function Generator	DSOX1202A
200-5275	2 channel with Function Generator	DSOX1202G
182-8410	4 channel without Function Generator	DSOX1204A
182-8412	4 channel with Function Generator	DSOX1204G



Economy Multimeter Benchtop

- Smart 5.5 digit DMM with software to control and capture data in an affordable and compact package
- Fast reading rate of up to 110 readings/s for speed-critical measurements
- 5,000 points logging memory for recording more data and perform analysis
- Standard 3-year Warranty



215-4790	Digital Multimeter, 5.5 digit	EDU34450A
----------	-------------------------------	-----------

Digital Multimeter Benchtop

- 8.5-digit precision with leading-edge DCV linearity accuracy, the lowest internal noise
- Measure with confidence with up to 8 ppm per year direct current voltage (DCV) accuracy (4 ppm with option)
- Test low power devices with low DC current measurement range from 100 nA to 1 A.
- Standard 3-year Warranty



195-3124	Digital multimeter, 8.5 digit	3458A
----------	-------------------------------	-------

Precision Screwdriver Set

- 24-piece screwdriver set is ideal for working on small, intricate electronic devices
- Comes in a handy plastic hanging case
- Set contains: slotted: 1.0 x 50, 1.2 x 50, 1.5 x 50, 1.8 x 50, 2.0 x 50, 3.0 x 75, 3.5 x 75, 4 x 75mm; hexagon: 1.5 x 50, 2 x 50, 2.5 x 50, 3 x 75mm; Phillips: PH0 x 50, PH00 x 50, PH1 x 75mm; pozidriv: PZ0 x 50, PZ1 x 75mm; Torx: T6 x 50, T7 x 50, T8 x 50, T9 x 50, T10 x 50, T15 x 75, T20 x 75mm



876-6278

Professional Electronic Tool Kit

- Complete kit with carefully selected tools for electronic engineers
- Contains: snipe nose pliers, side cutters, slotted screwdrivers, Philips screwdrivers, adjustable spanner and straight tipped tweezers in a handy wallet



418-9309

Lindstrom Pliers

- Supreme series snipe & flat nose pliers with ESD safe mono-material handles with return spring
- High performance alloyed steel with polished finish
- Numerically controlled machine grinding guarantees accuracy & increases the tools reliability & consistency
- Tough hardened 42-46 HRC
- Screw joint that minimises friction & maximises jaw alignment
- 32mm jaws with radiused edges



614-794	Snipe Nose Plier, 6mm tip width	7890
609-792	Flat Nose Plier, 3.2mm tip width	7490

TE Connectivity PRO-CRIMPER III

- Sturdy and reliable contacts
- Double contact spring design
- Secondary lock ensures correct and complete insertion of the contact
- Silicone rubber seals
-



314-1362	0.5 □ 1.5mm²
----------	--------------

SL25 25-Piece Socket & Bit Set

- ¼" hexagon drive socket set has soft grip ratchet with quick release button making it easy to use and more productive
- Set contains: ratchet, bit holder, extension bar, 4-13mm sockets and screwdriving bits supplied in a handy case



254-197



ESD Tool Kit

- Professional ESD safe tool kit featuring popular sized cutters, pliers, screwdrivers and tweezers housed in a ESD safe tool wallet
- Contains 2.5 x 75mm slotted, PH00 x 60mm and fine curved tweezer 120mm



249-8657

Stainless Steel Tweezer Set

- Designed for intricate work in the electronics industry
- Anti-acid and anti-magnetic



136-9872

RS PRO Hand Ratcheting Crimp Tool

- Ergonomic non-slip main handle and low friction moving handle ensure a comfortable hand grip
- Provides two-hand grip in the final phase of crimping, increasing comfort and productivity
- Full cycle crimp mechanism to ensure consistent, reliable crimp



683-1623 Crimp Tool for BNC, TNC, N, Ethernet and Thinnet Connectors

Automatic Wire Stripper

- Self-adjusting wire stripper with hardened steel blades and integral wire cutter (for single wires)
- Stripping length adjustment to suit application
- Stripping range 0.2-6mm



613-044

Insulated Crimp Kit with Tool

- Handy crimp terminal kit containing 800 high-quality colour coded insulated terminals in a range of popular sizes along with a compact crimp tool
- Contains crimps for use with wire size range of 0.5-6mm²
- For full contents visit our website



613-9952



Your smart choice
for Electronics engineering

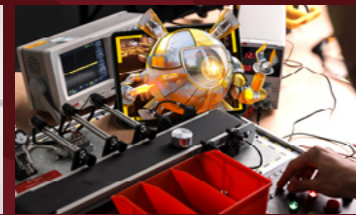
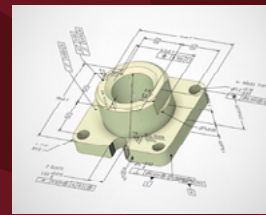
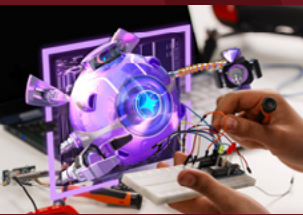
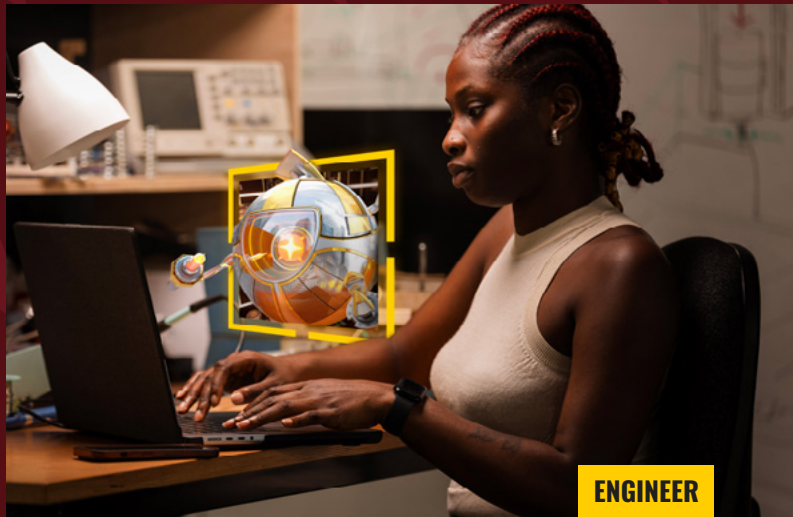
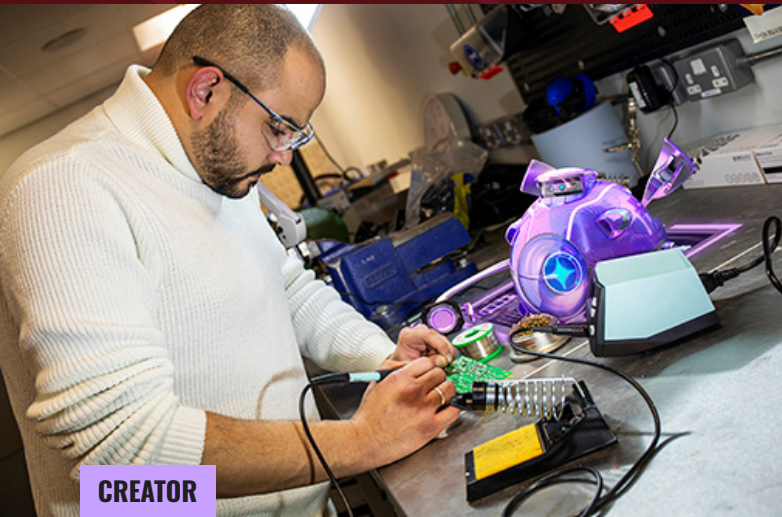


Electronics for every technological and industrial sector.

RS PRO offers a wide range of high-quality electronics components to meet your needs. From Industrial Connectors and Passives, all the way to our newest Test & Measurement equipment.



Essential engineering packages with software, tools and resources designed specifically for you.



ENGINEERING REDEFINED, TOMORROW REIMAGINED.

CREATOR

DesignSpark Creator is where the imagination soars, where inspiration meets innovation. Where you can defy limits, every design, every day.

Discover the power of symmetry with our Mirror tool, and ignite your PCB design journey with our integrated SnapEDA library.

Could you be a DesignSpark Creator?

ENGINEER

Engineer is where concepts turn to masterpieces, you're engineering a future that defies the ordinary and embraces the extraordinary.

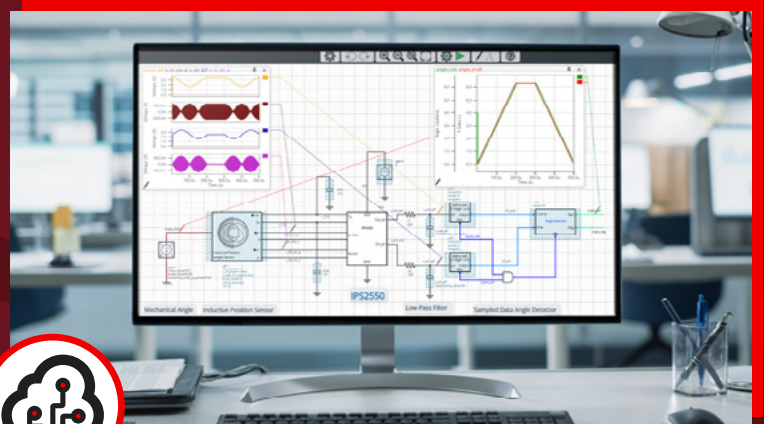
Unlock all the perks of the Creator package and gain extra features like blind and buried vias, hierarchical schematic designs, differential pairs and much more to help you scale for production.

Do you dare to Engineer?

CIRCUIT SIMULATOR

Test circuits as you build them with DS Circuit Simulator, a cloud-based design, modeling, simulation, and analysis environment. Creator and Engineer subscribers benefit from more time in the simulator, fine-tuning and testing for longer.

- 60min of simulation time
- Analog, digital, mixed-signal and multi-domain systems including electro-mechanical and electro-thermal.
- Unlimited public designs
- Engineer private groups for collaboration (DS invite only)



TRY OUR 7 DAY FREE TRIAL