



HAND TOOLS & STORAGE RANGE GUIDE

Discover RS PRO, the value alternative at the right price.

Discover our product highlights of over 2,500 hand tool products that have been tested and approved to bring you quality that you can rely on.



YOUR SMART CHOICE FOR HAND TOOLS

Discover RS PRO, the own brand, of RS, and our wide range of quality products across all industries. Our value alternative at the right price.



The RS PRO hand tools range has everything you need to get the job done.

RS PRO offers customers with one brand that gives huge choice and solutions, proven quality and prices that can be trusted.

The wide range of hand tools from RS PRO covers all the needs of the professional engineer, technician and tradesman with quality products you can trust.

Since 1937, RS PRO has had a passion for industrial parts. More importantly, we believe that every part matters, because the quality of your applications will always be linked to the quality of every part going into them.

This is why we rigorously test every part against demanding industry standards to gain the RS PRO Seal of Approval



AUDITED
In compliance with industry standards



INSPECTED
By leading engineers



TESTED
For guaranteed quality and performance



CONTENTS

TOOL KITS & STORAGE

Engineering Tool Kits	4
Electrical Tool Kits	6
Mechanical Tool Kits	8
Tool Storage	10



SPANNERS, SOCKETS & WRENCHES

Socket Sets	12
Socket Sets - 1/4 Inch	13
Socket Sets - 3/8 Inch	15
Socket Sets - 1/2 Inch	16
Socket Sets - Impact	18
Socket Metric	19
Socket Wrenches	20
Socket Wrenches - Torque	21
Spanners - Combo & Offset	22
Spanners - Insulated	23
Spanners - Other	24



SCREWDRIVERS, HEX & TORX KEYS

Screwdrivers - Hex	26
Screwdrivers - Insulated	28
Screwdrivers	29
Screwdrivers - Bits	30



PLIERS & CUTTERS

Pliers	32
Sets with Foam Inlay	34
Cutters & Shears	35
Pliers - Economy Range	36
Pliers - Insulated	37
Pliers - Water pump	38
Riveters	39



SPECIALIST TOOLS

Hammers & Demolition	40
Sanding, Filing & Polishing Tools	41
Measuring & Marking	42
Cable, Connector & Crimping Tools	43
Specialist Tools	44
Tweezers	45
Threading Tools	46



240 Piece Tool Set And 7 Drawer Roller Cabinet

- 11 drawer roller cabinet
- 240 piece tool kit
- Recessed worktop with a high-quality mat
- Side compartments ideal for spray cans and paper rolls
- Low friction telescopic ball bearing slides ensuring smooth operation
- Fitted with an emergency brake
- Oil resistant wheels



213 Piece Engineers Tool Kit With Trolley

- Recessed worktop with a high-quality mat to ensure a convenient working area
- Holders for spray cans and paper rolls
- Smart-Lock system that prevents accidental opening
- Heavy duty oil resistant rubber wheels, with two fixed and two swivel wheels and emergency brake



125-3046 240 Piece Tool Kit & 7 Drawer Roller Cabinet, 975 x 710 x 450, 60.2 kg

Kit contains:

- 833-5966** 2pc Climber and Stripper Set
 - 833-5969** 5pc Hand Riverter Set
 - 833-5925** 12pc Ratcheting Combination Wrench Set
 - 833-5944** 6 Piece Measuring and Cutting Tool Kit with Foam Inlay
 - 833-5931** 3pc VDE Insulated Pliers Set
 - 833-5929** 4pc Circlip Pliers Set
 - 833-5922** 16 Piece Combination Wrench Set
 - 833-5935** 52pc 1/4" Drive Socket and Hex Key Set
 - 833-5950** 23pc 1/2" Drive Socket Set with Ratchet
 - 833-5957** 29pc 1/2" TORX/Hex/XZN Socket Bits Set
 - 833-5941** 7pc Insulated Slotted/PH Screwdriver Set
 - 833-5953** 11pc Standard and Needle File Set
 - 833-5947** 39pc Slotted/PZ Screwdriver and Bit Set
 - 833-5972** 3pc Softgrip Pliers Set
 - 833-5938** 3pc Pliers and Adjustable Wrench Set
 - 833-5919** 10pc Precision Plier and Screwdriver Set
 - 833-5913** 15 piece L, T Metric Hex Key Set, 1.5 □ 10, 2 □ 6mm
- 5 Division EVA Module

23 Piece VDE 1000 V Engineers Tool Kit

- Ergonomic multi-component handles
- Optimum balance of torque and control
- Ideal for fine and delicate work
- High quality
- VDE approved



829-6549

Kit includes:

- Phillips Screwdrivers PH1 x 100, PH2 x 100 mm
- Slotted Screwdriver 1 x 5.5 x 125 mm, 0.8 x 4 x 100 mm
- 1/2 Inch Sockets 10, 12, 13, 14, 17, 19, 22, 24 mm
- Insulated VDE Open Ended Spanner Set 7, 8, 10, 12, 14 mm
- 150 mm Diagonal Pliers
- 200 mm Combination Pliers
- 1/2 Inch Reversible Ratchet
- 1/2 Inch T-Handle
- Cable Knife

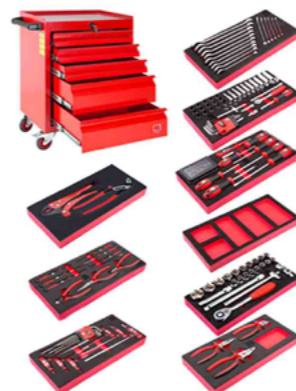
125-3047 213 Piece Engineers Tool Kit with Trolley, 975 x 710 x 450

Kit contains:

- 833-5922** 16 Piece Combination Wrench Set
- 833-5935** 52pc 1/4" Drive Socket and Hex Key Set
- 833-5950** 23pc 1/2" Drive Socket Set with Ratchet
- 833-5957** 29pc 1/2" TORX/Hex/XZN Socket Bits Set
- 833-5941** 7pc Insulated Slotted/PH Screwdriver Set
- 833-5953** 11pc Standard and Needle File Set
- 833-5947** 39pc Slotted/PZ Screwdriver and Bit Set
- 833-5972** 3pc Softgrip Pliers Set
- 833-5938** 3pc Pliers and Adjustable Wrench Set
- 833-5919** 10pc Precision Plier and Screwdriver Set
- 833-5913** 15 piece L, T Metric Hex Key Set, 1.5 □ 10, 2 □ 6mm
- 833-5944** 6 Piece Measuring and Cutting Tool Kit with Foam Inlay

160 Piece Roller Cabinet Tool Kit

- Sturdy and dependable construction, premium quality sheet steel
- Elegant and durable electrostatic matt powder coated, scratch proof
- 5 drawers - compatible with SBS inlays
- Each drawer can accommodate 3 SBS EVA tool modules
- Low friction telescopic ball bearing slides ensuring silk smooth operation
- Central locking mechanism. No possibility of key match
- Recessed worktop with a high quality mat to ensure a convenient working area



125-3048 160 Piece Roller Cabinet Tool Kit, 825 x 630 x 450

Kit contains:

- 833-5922** 16 Piece Combination Wrench Set
 - 833-5935** 52pc 1/4" Drive Socket and Hex Key Set
 - 833-5950** 23pc 1/2" Drive Socket Set with Ratchet
 - 833-5947** 39pc Slotted/PZ Screwdriver and Bit Set
 - 833-5972** 3pc Softgrip Pliers Set
 - 833-5938** 3pc Pliers and Adjustable Wrench Set
 - 833-5919** 10pc Precision Plier and Screwdriver Set
 - 833-5913** 15 piece L, T Metric Hex Key Set, 1.5 □ 10, 2 □ 6mm
- 5 Division EVA Module

82 Piece Technician's Tool Kit

- Supplied in a heavy duty carry case of convenient storage and organisation, Contains a selection of essential hand tools which includes screwdrivers, cutters, hex keys, pliers, spanners and a voltage tester plus much more.
- Ideal choice for both electrical and industrial engineering applications and offers a high quality and precision finish, no matter what the application is that these tools are being used for.



136-3410 82 Piece Engineers Tool Kit with Case

Kit contains:

- 1) Magnetic Pick-Up and Claw Tool
- 2) Mini Hacksaw
- 3) Ball Pein Hammer - 8 oz.
- 4) Trimming Knife
- 5) Electronics Short Needle Nose Pliers
- 6) Electronics End Cutter
- 7) Electronics Diagonal Cutter (Small Bevel)
- 8) Compact Tape Measure - 3x16 mm / 10 ft
- 9) Inspection Mirror
- 10) Solder Sucker
- 11) Small Cleaning Brush
- 12) Knife File - 2nd Cut - 150 mm
- 13) Solder Aid Set
- 14) Double Open End Wrench - 5x5.5/6x7/8x10 mm
- 15) Magneto File Set
- 16) 6 Piece Needle File Set
- 17) 0.70 mm Wire Lead Solder, 100 g
- 18) Desoldering Braid
- 19) Jeweller's driver (4 blades)
- 20) Pocket Lens
- 21) 230V Electrical Soldering Iron
- 22) Cable Stripper
- 23) RZR Series Cable Shears - 170 mm
- 24) Wire Stripping Pliers - 160 mm
- 25) Multi-Purpose Cutter (Straight)
- 26) Fiberglass Pencil
- 27) Extra Fine Straight Tweezers
- 28) 3 Pcs Trim Tool Kit
- 29) 18 Piece Hexagon L Key Set - Metric / Imperial
- 30) Offset Slotted Screwdriver - 4.0 mm
- 31) Offset Phillips Screwdriver - PH1xPH2
- 32) Long Nose Pliers - 160 mm
- 33) Diagonal Cutter - 160 mm
- 34) Combination Pliers - 180 mm
- 35) Adjustable Wrench (Phosphate/PVC) - 150 mm
- 36) Single-Pole Voltage Tester (Short)
- 37) Electronics Slotted Screwdriver - 3x100 mm
- 38) Pozidriv Screwdriver - PZ0x60/PZ1x80/PZ2x100mm
- 39) Slotted Screwdriver (Cabinet Tip) - 3.0x 00/4.0x100/5.5x100/5.5x2
- 40) 75 mm Screw Gripping Screwdriver
- 41) 150 mm Screw Gripping Screwdriver



25 Piece Engineers Tool Kit

- Impact resistant, waterproof IP67 case with customisable tool fixing system and a soft grip handle
- Comes complete with high-quality tools



136-3400 25 Piece Engineers Tool Kit with Case

Kit contains:

- 1) Double Open End Wrench - 5x5.5 / 6x7 / 8x10 mm
- 2) 6 Piece Needle File Set
- 3) Gas Soldering Iron
- 4) Solder Sucker
- 5) Trimming Knife
- 6) Extra Fine Straight Tweezers
- 7) Jeweller's driver (4 blades)
- 8) 3 Pcs Trim Tool Kit
- 9) Single-Pole Voltage Tester
- 10) Electronics Slotted Screwdriver - 3x80 mm
- 11) Electronics Diagonal Cutter (Small Bevel)
- 12) Compact Tape Measure - 3x16 mm
- 13) Electronics Short Needle Nose Pliers
- 14) 7 Piece Hexagon L Key Set - Metric
- 15) 0.70 mm Wire Lead Solder, 100 g
- 16) Adjustable Wrench (Phosphate/PVC) - 150 mm
- 17) Wire Stripping Pliers - 160 mm
- 18) Diagonal Cutter - 140 mm
- 19) Combination Pliers - 160 mm
- 20) Slotted Screwdriver - 4.0x100 / 6.5x100mm
- 21) Pozidriv Screwdriver - PZ1x80 mm / PZ2x100mm



82 Piece Technician's Tool Kit

- Ergonomic multi-component handles
- Optimum balance of torque and control
- High quality
- VDE approved screwdrivers and pliers for electrical safety
- Tool storage - comes in a sturdy tool case



136-3417 36 Piece Electricians Tool Kit with Case

Kit contains:

- 1) Claw Hammer - 16 oz.
- 2) Mini Hacksaw
- 3) Compact Tape Measure - 3x16 mm / 10 ft
- 4) Torpedo Level
- 5) Ratchet Bit Driver Set
- 6) Rethreading Tool - M3.5
- 7) Single-Pole Voltage Tester (Short)
- 8) Non-Contact
- 9) Insulated Pozidriv Screwdriver (VDE) - PZ1x80 / PZ2x100 / Flat-Pozi 2x100mm
- 10) Insulated C-PLUS Phillips Screwdriver (VDE) - PH1x80/PH2x100 mm
- 11) Insulated C-PLUS Slotted Screwdriver (VDE) - 3.0x100/4.0x100, 5.5x125/6.5x150 mm
- 12) Automatic Wire Stripper
- 13) Cable Stripper
- 14) Electrician Knife (1000V)
- 15) Insulated Combination Pliers (VDE) - 180 mm
- 16) Insulated Diagonal Cutter (VDE) - 160 mm
- 17) Insulated Long Nose Pliers (VDE) - 200 mm
- 18) RZR Series Insulated Cable Shears (VDE) - 170 mm
- 19) Insulated Water Pump Pliers (VDE) - 250 mm



32 Piece Electrician's Tool Kit

- Ergonomic multi-component handles
- Optimum balance of torque and control
- High quality
- VDE approved for electrical safety
- Tool storage - comes in a sturdy tool bag



136-3411 32 Piece Electricians Tool Kit with Case, VDE Approved

- 1) Wallboard Saw - 160 mm
- 2) Safety Goggles
- 3) Compact Tape Measure - 3x16 mm / 10 ft
- 4) Claw Hammer - 16 oz.
- 5) Flat Cold Chisel - 16x150/20x175mm, Centre Punch - 4x120 mm
- 6) Hacksaw (in-Handle Fixing System)
- 7) Mini Hacksaw
- 8) Automatic Wire Stripper
- 9) Trimming Knife
- 10) Professional LED Flashlight
- 11) Marker Pen
- 12) Single-Pole Voltage Tester (Short)
- 13) Electronics Slotted Screwdriver (VDE) - 3x80 mm
- 14) Slotted Screwdriver (Flared Tip) - 10.0x200 mm
- 15) 150 mm Screw Gripping Screwdriver
- 16) Stubby Slotted Screwdriver - 5.5x25 mm
- 16) Stubby Pozidriv Screwdriver - PZ2x25 mm
- 17) Insulated Pozidriv Screwdriver (VDE) - PZ1x80/PZ2x100 mm
- 18) Insulated Slotted Screwdriver (VDE) - 2.5x 75 / 4.0x100 mm
- 19) Long Nose Pliers - 160 mm
- 20) Diagonal Cutter - 160 mm
- 21) Combination Pliers - 200 mm
- 22) RZR Series Cable Shears - 170 mm
- 23) Multi-Purpose Cutter (Straight)
- 24) Adjustable Wrench (Phosphate/PVC) - 200 mm
- 25) Water Pump Pliers (Box Joint/PVC) - 250 mm
- 26) Water Pump Pliers (Box Joint/PVC) - 300 mm



29 Piece Electrician's Tool Kit

- VDE approved tool set
- Ergonomic multi-component handles
- Optimum balance of torque and control
- Ideal for fine and delicate work
- High-quality multi-tools and accessories
- Range of labels



136-3402 29 Piece Electricians Tool Kit with Case

Kit contains:

- 1) Electrician Knife (1000V)
- 2) RZR Series Insulated Cable Shears (VDE) - 170 mm
- 3) Insulated Wire Stripping Pliers (VDE) - 160 mm
- 4) Insulated Diagonal Cutter (VDE) - 160 mm
- 5) Insulated Combination Pliers (VDE) - 180 mm
- 6) Insulated Long Nose Pliers (VDE) - 200 mm
- 7) Insulated Open End Wrench (1000V) - 5.5/6/7/8/10/12/13/17/19
- 8) Safety Goggles
- 9) Black/Yellow insulation tape
- 10) "Unsafe" Label
- 11) Junior Hacksaw (1000V)
- 12) Insulated Water Pump Pliers (VDE) - 250 mm
- 13) Insulated Pozidriv Screwdriver (VDE) - PZ0x60/PZ1x80/PZ2x100/PZ3x150mm
- 14) Insulated Slotted Screwdrivers (VDE) - 2.5x75/4.0x100/5.5x125 x150/8.0x175mm
- 15) "Danger" Label
- 16) "H.V. Test Area" Label
- 17) "Electric Shock" Label
- 18) "Live Wires" Label
- 19) "High Voltage Label
- 20) "Disconnect" Label
- 21) "415 V a.c." Label
- 22) "240 V a.c." Label
- 23) "115 V a.c." Label



125-3049 Tool Case, 530 x 180 x 400mm

48 Piece Electro-Mechanical Basic Tool Kit

- Tool storage: supplied in a hard-wearing case with combination lock
- Case is made from highly resistant injected polypropylene
- Case has document holder, a ceramic soldering iron holder and a single and double sided tool holder tray
- Three adjustable separators



178-043 48 Piece Electro-Mechanical Basic Tool Kit

Kit Contains:

- x4 Cutting Pliers, Stripping Pliers, Reversible Retaining Ring Pliers, Multi-Grip Pliers, Round Electronic Pliers, Phillips Screwdrivers (PH00, PH0, PH1, PH2), Precision Screwdriver, x5 Expert Screwdrivers, x10 Angled Male Spanners, x4 Flat Spanners, Adjustable Spanner, Soldering Iron, De-soldering Braids, 500 g Lead Free Solder Wire, Nylon Cleaning Brush, Electricians Knife, Electronics Scissors, Steel Punch, Cylindrical Punch, Rivet Hammer, Hacksaw Frame with Blades, Roll of Adhesive Tape

255-910 Tool Case

88 Piece VDE Approved Electricians Tool Kit

- Ergonomic multi-component handles
- Constructed from Chrome Vanadium Steel



734-8885 88 Piece Electricians Tool Kit with Case, VDE Approved

Kit contents:

- 1/2 Inch Sockets (14 - 32mm), 1/2 Inch Extension (125 & 250mm), 1/2 Inch Plug Wrench (16 & 21mm), 1/4in Sockets (4 - 13mm), 1/4in Extension (55 & 100mm), 1/4in Connector, 1/2 Inch & 1/4in Reversible Ratchet, 1/2 Inch & 1/4in Universal Joint, 1/2 Inch & 1/4in Sliding T bar, Metric Wrench (8 - 17mm), 6in Insulated Slip joint pliers, 6in Insulated Nipper pliers, 6in insulated Wire strippers, 7in Insulated Wire cutters, Insulated Water pump pliers, Electricians Shears, 250V Test pencil, 300g Hammer, 5m Tape measure, Driver bits (x20), Insulated Screwdrivers (x5), Hex Keys (x9)

72 Piece Socket & Tool Set

- 3/8in socket components
- Chrome Vanadium steel construction
- Sandblasted finish
- Sockets stamp with sizes for quick identification
- Tool storage – supplied in a sturdy handy blow moulded tool box
- Telescopic magnetic rod for retrieving screws that cannot be reached by hand
- Flexible attachment for the ratchet set - ideal for awkward bolts
- Full Allen key set
- Comfortable handles



829-6561 73 Piece Mechanical Tool Kit with Case

78 Piece Mechanical Tool Kit

- High quality set supplied fitted in a blow moulded carry and storage case
- Chrome Vanadium steel construction
- Socket stamp with sizes for quick identification
- Visit our website for more details on contents

829-6568 78 Piece 1/4 & 1/2 Inch Drive

Kit contents:

- 1/2 Inch Sockets: 10, 11, 12, 13, 14, 15, 17, 19, 22, 24, 27, 30, 32 mm
- 1/4 Inch Sockets: 4, 5, 6, 7, 8, 9, 10, 11, 13 mm
- 1/4 Inch Deep Sockets: 8, 10, 12, 13 mm
- Spark Plug Socket 16 and 21 mm
- 1/2 Inch Quick Release Ratchet
- 1/2 Inch Sliding T-Handle
- 1/4 Inch Quick Release Socket Ratchet
- 1/4 Inch Sliding T-Handle
- 1/4 Inch Spinner Handle
- Socket Attachments (1/2 Inch Extensions - 125 and 250 mm, 1/4 Inch Extension Bar - 75 mm, 1/4 Inch Flexible Extension, 1/2 Inch Universal Joint, 1/4 Inch Universal Joint, 1/4 Inch Coupler)
- 180 mm Combination Pliers
- 250mm Water Pump Pliers
- 18 Piece Hex Bit Set (1/4 Inch Hex Bits: 3, 4, 5, 6 mm; 1/4 Inch Slotted Bits: 3, 4, 5, 6 mm; 1/4 Inch Phillips Bits: PH1, PH2, PH3; 1/4 Inch Pozidriv Bits: PZ1, PZ2, PZ3; 1/4 Inch Torx Bits: T10, T15, T20, T25)
- Combination Spanners 8, 10, 12, 13, 14, 15, 17, 19 mm
- Screwdrivers Slotted: 6 x 100, 4 x 100 mm; Phillips: PH1 x 75, PH2 x 100, PH3 x 150 mm
- Hex Key Set
- 300 g Hammer



94 Piece Mechanics Tool Kit

- Large tool kit for automotive work comprising of a comprehensive socket and bit, spanner and precision screwdriver sets
- Chrome Vanadium construction with Chrome Molybdenum Steel sockets

734-8889 94 Piece Mechanics Tool Kit

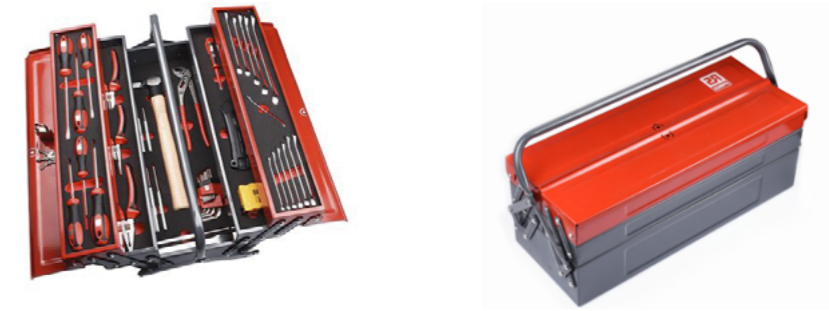
Kit contains:

- 1/2 Inch Sockets 13, 14, 15, 16, 17, 18, 19, 20, 21, 22, 23, 24, 27, 30, 32 mm
- 1/4 Inch Sockets 4, 4.5, 5, 5.5, 6, 7, 8, 9, 10, 11, 12, 13 mm
- Ratchet Handle, Universal Joint and Sliding T-bar
- 1/2 Inch Quick Release Ratchet
- 1/4 Inch Quick Release Ratchet
- 1/2 Inch Universal Joint (Rivet Type)
- 1/4 Inch Universal Joint (Rivet Type)
- 3/8 Inch T-bar Adapter
- 1/4 Inch 110 mm Sliding T-bar
- Combination Spanners 8, 10, 11, 12, 13, 14, 17, 19, 22 mm
- Precision Screwdrivers Slotted: 1.5, 2, 3 mm Phillips: No.0-0, No.0, No. 1 Torx: T6, T8, T10, T25, T27, T30; 30 (L) x 10 mm
- Hexagon Bits Slotted: 7, 8, 10 mm; Phillips: No.3, No.4; Pozi: No.3, No.4; Hex Bits: 6, 7, 8, 10 mm; Torx: T30, T40, T45, T47, T50
- Spark Plug Sockets 16 and 21 mm
- 1/2 Inch 125 and 250 mm Extension Bar
- 1/4 Inch 55, 100 and 250 mm Extension Bar
- 1/4 Inch 150 mm Spinner
- 1/4 Inch Screwdriver Bit Coupler
- 1/2 Inch Screwdriver Bit Coupler
- Blow Moulded Case



42 Piece Mechanical Tool Kit

- Ergonomic multi-component handles
- Optimum balance of torque and control
- High quality
- Sturdy tool box



136-3415 42 Piece Mechanical Tool Kit

Kit contains:

- 1) Ball Pein Hammer - 16 oz.
- 2) 12 Piece Combination Wrench Set
- 3) Trimming Knife
- 4) Compact Tape Measure - 3x16 mm / 10 ft
- 5) Flat Chisel 21x150mm/Centre Punch - 4x120 mm/Parallel Pin Punch 3,4,5,6 x 150mm
- 6) Long Nose Pliers - 160 mm
- 7) Diagonal Cutter - 160 mm
- 8) Combination Pliers - 180 mm
- 9) Water Pump Pliers (Box Joint/PVC) - 250 mm
- 10) Single-Pole Voltage Tester (Short)
- 11) Pozidriv Screwdriver - PZ1x80 / PZ2x100 mm
- 12) Slotted Screwdriver (Cabinet Tip) - 3.0x075 / 4.0x100 / 5.5x125 / 6.5x150 mm
- 13) 9 Piece Hexagon L Key Set - Metric
- 14) Padlock



82 Piece Mechanics Tool Kit

- Ergonomic multi-component handles
- Optimum balance of torque and control
- High quality
- Tool storage – comes in a sturdy toolbox - foldout construction for easy access & large storage capacity



136-3412 82 Piece Mechanics Tool Kit

Kit contains:

- 1) Flat Chisel 21x150mm/Centre Punch - 4x120mm/ Parallel Pin Punch 3,4,5,6 x
- 2) Soft Face Hammers
- 3) Ball Pein Hammer - 16 oz.
- 4) Stainless Steel Rules - 30mm
- 5) Water Pump Pliers (Box Joint/PVC) - 250 mm
- 6) Compact Tape Measure - 3x16 mm / 10 ft
- 7) Feeler Gauge(Metric) 0.05-1.00mm
- 8) Trimming Knife
- 9) Double Open End Wrench - 5x5.5/6x7/8x10 mm
- 10) 12 Piece Combination Wrench Set
- 11) 1/2 Inch Dr. 6-Point Sockets - 18 pieces
- 12) 1/2 Inch Dr. Quick Release Reversible Ratchet
- 13) 1/2 Inch Dr. Sliding T-Handles
- 14) 1/2 Inch Dr. Extension Bar-125mm
- 15) 1/2 Inch Dr. Extension Bar-250mm
- 16) 1/2 Inch Dr. Universal Joint
- 17) 18 Piece Hexagon L Key Set - Metric / Imperial
- 18) Long Nose Pliers - 160 mm
- 19) Diagonal Cutter - 160 mm
- 20) Combination Pliers - 180 mm
- 21) Pozidriv Screwdriver - PZ1x80 mm / PZ2x100 mm
- 22) Slotted Screwdriver - 4.0x100 / 5.5x125 / 6.5x150 / 8.0x150mm
- 23) Single-Pole Voltage Tester (Short)
- 24) Stubby Slotted Screwdriver - 5.5x25 mm / Stubby Pozidriv Screwdriver - PZZ
- 25) Padlock



Heavy Duty Drawer Wheeled Tool Cabinet

- Mobile tool cabinet
- Central locking mechanism for added security
- Fully extending drawers
- Recessed worktop



753-1573	3 drawer, 830mm x 630mm x 450mm, 39.3kg
753-1576	5 drawers, 830mm x 630mm x 450mm, 45.65kg
753-1570	6 drawers, 830mm x 630mm x 450mm, 47.7kg
753-1589	7 drawers, 970mm x 630mm x 450mm
753-1582	12 drawer Maintenance Cart, 870mm x 1085mm x 450mm, 87.75kg

Wall Mount Tool Cabinet With Drawers

- Lockable doors
- Hook tool storage
- Fully extendable drawer
- Sturdy steel construction
- Two piano hinged lockable doors
- Assorted hooks
- Made from heavy gauge steel



851-7616	1 drawer, 900mm x 195mm x 615mm
851-7610	2 drawers, 890mm x 225mm x 750mm

Standard Duty Tool Cabinet

- Mobile tool cabinet
- Central locking mechanism for added security
- Fully extending drawers
- Recessed worktop
- 75mm diameter wheels with 2 locking swivel castors & 2 fixed castors



753-1586	5 drawers, 650mm x 560mm x 350mm, 28.65kg
-----------------	---

Steel Drawer Tool Chest

- Sturdy and dependable construction, premium quality sheet steel.
- Elegant and durable electrostatic matt powder coated, scratch proof.
- 3 small drawers on the top row.
- 80 mm deep top locker.
- Low friction telescopic ball bearing slides ensuring silk smooth operation.
- Integrated carrying handles.



768-1678	3 drawers, 365mm x 620mm x 440mm
768-1671	6 drawers, 350mm x 530mm x 340mm, 18kg

Mobile Tool Cupboard

- Sturdy and dependable construction, premium quality sheet steel.
- Elegant and durable electrostatic matt powder coated, scratch proof.
- Locking mechanism.
- 75 diameter, 2 locking swivel castors and 2 fixed castors



753-1598	730mm x 450mm x 310mm, 11.95kg
-----------------	--------------------------------

Polyester Backpack With Shoulder Strap

- 16" rucksack with reflective piping
- Comfortable padded shoulder straps
- Double zipped bottom section - ideal for laptop, guarantees extra safety
- Multiple pockets
- Drinks holder
- Mobile phone/mp3 player holder on strap



788-7211	340mm x 220mm x 410mm
-----------------	-----------------------

Polyester Tool Bag With Shoulder Strap

- Top opens with a zipper
- Shoulder strap with adjustable function and buckle
- Removable baseboard
- Separate front
- Comes in black with red webbing



707-7335	445mm x 170mm x 330mm
-----------------	-----------------------

4 Drawer Jumbo Tool Chest

- Sturdy and dependable construction, premium quality sheet steel.
- Elegant and durable electrostatic matt powder coated, scratch proof.
- 4 drawers - compatible with tool modules inlays.
- Each drawer can accommodate 4 EVA tool modules.
- 80 mm deep top locker with integrated locking mechanism
- Low friction telescopic ball bearing slides ensuring silk smooth operation.
- Integrated carrying handles



833-5907	476mm x 440mm x 794mm
-----------------	-----------------------

Polyester Tool Bag With Shoulder Strap

- The bag is constructed with tear-resistant padded polyester, with a durable welded waterproof plastic base. This ensures that your cargo is adequately protected against the elements and casual impacts.



788-7205	310mm x 200mm x 210mm
-----------------	-----------------------

Tool Case

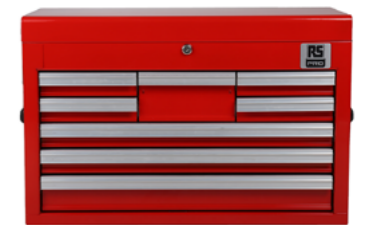
- Waterproof (IP67)
- Dustproof
- Impact/shock resistant
- Stackable
- Soft-grip carry handle
- Lockable with padlock (not included)



125-3049	530 x 180 x 400mm
-----------------	-------------------

8 Drawer Steel Tool Chest

- Durable electrostatic matt powder coated, scratch proof
- 80mm deep top locker with an integrated locking mechanism
- Low friction telescopic ball bearing slides
- 8 separate drawers with varying sizes
- Carrying handles
- Easily fits onto the majority of RS Tool Cabinets



773-2735	427mm x 660mm x 307mm
-----------------	-----------------------

66 Pieces 1/4 Inch And 1/2 Inch Socket Set

- Chrome Vanadium for excellent strength and corrosion resistance
- Soft comfortable ratchet handles for reduced fatigue and a tighter grip
- Fitted case reduces lost parts
- Bit sizes marked directly on the holders for quick identification of missing bits
- Strong latches for secure closing
- 75 mm and 250 mm extension bar for hard to reach areas



817-9249 66 Piece Metric 1/2 in; 1/4 Inch Standard Socket/Bit Set with Ratchet

61 Piece Socket Set, 1/2 In, 1/4 Inch, 3/8 Inch Square Drive

- Drive size of 1/2 in, 1/4 Inch and 3/8 in
- Square drive type
- Chrome finish
- Chrome vanadium steel material
- 61 pieces



480-6880 Socket Sizes: 4 □ 14, 9 □ 19, 9 □ 24mm
Drive Sizes: 1/2 in, 1/4 Inch, 3/8 in
Sockets set contents:
Socket set type

46 Pieces 1/4 inch and 3/8 inch Socket and Bit Set

- Chrome Vanadium for excellent strength and corrosion resistance
- Soft comfortable ratchet handles for reduced fatigue and a tighter grip
- Fitted case reduces lost parts
- Bit sizes marked directly on the holders for quick identification of missing bits
- 1/4 and 3/8 Inch drive options



817-9242 46 Piece Metric 1/4 in; 3/8 Inch Standard Socket/Bit Set with Ratchet

Socket Bit Set

- 45 Piece hexagon, spline & TX bits with adaptors in a handy storage case



213-1011 45 Piece Metric 1/2 in; 3/8 Inch Standard Socket/Bit Set

29 Pieces 1/4 Inch Socket Set

- Chrome Vanadium for excellent strength and corrosion resistance
- Soft comfortable ratchet handle for reduced fatigue and a tighter grip
- Extension bars for hard to reach areas
- Labelled with the corresponding items for quick and easy identification
- Strong latch for secure closing



817-9233 29 Piece Metric 1/4 Inch Standard Socket/Bit Set with Ratchet

16 Piece 1/4 Inch Square Drive Metric Socket Set

- Material: chrome vanadium steel for socket and accessories, chrome molybdenum (scm#440) steel for driver portion and P.P / TPR double injection grip.
- Finish: satin chrome plated with knurled upon central portion for socket and accessories, detent grooves on all sockets and red (pantone- 187c) / black double injection grip
- Hardness: heat treated to HRC: 38 - 54 (sockets & accessory)



623-6413 16 Piece Metric 1/4 Inch Standard Socket Set with Ratchet, 6 point

46 Piece Screwdriver & Socket Set

- High torque reversible ratchet drive with a magnetic shaft, fitted with cushion grip handle and internal bit storage compartment
- Chrome plated bit driver shaft
- Sandblast finish for bits
- Double injection grip
- All bits and sockets are manufactured from high-grade alloy steel with a rust-resistant finish and



623-6441 46 Piece Imperial, Metric 1/4 Inch Standard Socket/Bit Set with Ratchet

39 Piece Socket And Bit Set

- Made from heat-treated and forged Chrome Vanadium Steel to ensure long-lasting durability and resistance, even in harsh worksite conditions
- Innovative 'Sure Drive' system offers a reliable and secure grip to stop slipping and rounding of fasteners, parts and fixings
- Contains a comfortable and ergonomically designed 1/4" Ratchet handle and spinner bar



623-6390 39 Piece Metric 1/4 Inch Standard Socket/Bit Set with Ratchet

30 Piece Bit/Socket Set

- Bits made from hardened and tempered Chrome Molybdenum Steel (S2)
- Nuts made from Chrome Vanadium Steel and zinc alloy with carbon steel shaft of a bit holder
- Chrome-plated bit holder
- Sandblasted finish for bits & nut drivers
- Supplied in the innovative case allowing for easy access, transport and storing
- Kit contains: 1x Magnetic bit adaptor, 7x Metric Socket, 5x 25mm Hexagon Drivers, 4x 25mm Posidriv screwdriver heads, 3x 25mm Slotted (flathead) screwdriver heads, 1x 50mm Slotted (flathead)



213-1005 30 Piece Metric 1/4 Inch Standard Socket/Bit Set , 6 point; Hex Bit; Pozidriv Bit; Slotted Bit; Torx Bit

10 Piece Socket Set

- Made from chrome vanadium steel
- Hardened and tempered and chrome plated for corrosion protection
- Set supplied on a socket rail retaining bar, which may be wall mounted or used inside a tool box compartment in a roller cabinet



499-2543 10 Piece Metric 1/4 Inch Deep Socket Set , 6 point

52 Piece Metric 1/4 Inch Deep Socket/Standard Socket/Allen Key/Bit Set With Ratchet

- High quality square 6-point drive metric socket set and hex keys
- Steel construction for excellent strength and durability
- Bright red foam visible - helps identify missing parts quickly
- Soft comfortable reversible quick release ratchet handle for



833-5935 52pc 1/4" Drive Socket and Hex Key Set

6 Pieces Tamperproof Hex

- Bits: Chrome molybdenum vanadium steel, Socket body: Chrome Vanadium steel, Set Contents: 5/64, 3/32, 7/64, 1/8, 9/64, 5/32



262-0218 6 Piece Imperial 1/4 Inch Bit Socket Set , Tamperproof Hex Bit

60 Piece 1/4" Drive Imperial/Metric Socket Set

- Imperial and Metric Sets
- Quick-release reversible ratcheted and accessories
- Durable PP copolymer injection moulded case
- EVA high density foam inserts
- Set contents: Quick release reversible ratchet; bit holder socket; 50mm extension bar; 150mm extension bar; 150mm spinner handle; universal joint; 115mm sliding t-handle; 6-point socket x11; 12-point socket x9; 6-point deep socket x6; 12-point deep socket x6; slotted bit x3; Phillips bit x2; pozidriv x2; torx x6; hex bit x4; hex I key x4



224-2248 60 Piece 1/4 Inch Deep Socket/Standard Socket/Bit Set with Ratchet, 6 point; 12 point; Hex Bit; Phillips Bit;

8 Piece Socket Set, 1/2 Inch Hexagon Impact Drive

- Ensure a secure hold, regardless of the application
- Ring magnet allows for secure holding
- Colour coded for easy identification
- Chrome vanadium material ensures strength and durability
- Supplied in a convenient case
- Contents : 65mm Nut Driver 6mm, 7mm, 8mm, 9mm, 10mm, 11mm, 12mm, 13mm



180-7090 8 Piece 1/4 Inch Bit Socket Set , Hex Bit,

7 Piece 1/4 Inch Drive Tamperproof Torx Socket Bit

- Tamper-proof screws, nuts and bolts were designed to lock into place, the Craftsman 7 piece tamper-proof Torx bit socket is engineered to back the security with strength. The patented new pressure fit system increases bit retention and movement in holder.
- Chrome Molybdenum Vanadium Steel
- Set contents: Tx8, Tx10, Tx15, Tx20, Tx25, Tx30, Tx40



262-0224 7 Piece 1/4 Inch Bit Socket Set , Tamperproof Torx Bit

12 Piece Socket Set, 1/4 Inch Square Drive

- Drive size of 1/4 in Square drive type
- Chrome finish
- Chrome-vanadium steel material
- 12 pieces
- Socket set type



487-113

7 Piece 1/4 Inch Bit Socket Set , Torx Bit

- Bits and sockets are made from a high-grade chrome molybdenum vanadium steel
- Heat treated to HRC: 56 □ 62
- Suitable for use with power tools
- Supplied with a socket rail and socket clips



262-0268 7 Piece 1/4 Inch Bit Socket Set , Torx Bit

11 Piece Socket Bit Set (1/4In)

- 1/4in Torx Bits: T6, T8, T10
- 1/4in Spanner Bits: 4, 6, 8, 10mm
- 1/4in Tri-wing: TW1, TW2, TW3, TW4



262-0202 11 Piece 1/4 Inch Bit Socket Set , Spanner Bit; Torx Bit; Tri-Wing Bit

41 Piece Imperial/Metric Socket Set, 3/8-Inch Hexagon Non-Impact Drive

- Imperial & Metric socket set
- Quick-release reversible ratchet and accessories
- Durable PP copolymer injection moulded case
- EVA high density foam inserts
- Set contents: 6-Point Deep Socket x4, 6-Point Socket x16, 12-Point Deep Socket x4, 12-point Socket x11, 75mm Extension Bar, 150mm Extension Bar, 200mm Sliding T-handle, Quick Release Reversible Ratchet, Spinner Handle, Universal Joint



224-2249 41 Piece Imperial, Metric 3/8 Inch Deep Socket/Standard Socket Set with Ratchet, 6 point; 12 point

3/8 Inch Drive Hex Bit Set

- All sockets manufactured from chrome vanadium steel with screwdriver bits manufactured from S2 steel, hardened and tempered for heavy duty use
- All blade lengths 50mm
- Rail retaining bar can be wall mounted or used within roller cabinet storage box



262-0319 Hex 3-12mm

18 Piece Socket Set, 3/8 Inch Square Drive

- 3/8-inch square drive socket set
- Mirror chrome finish
- 18 pieces
- 13 six-point sockets from 8 to 22 mm (excluding 9 mm and 20 mm)
- Includes 75 mm and 150 mm extension arms, one sliding T-bar, one universal joint and one reversible ratchet arm



125-3053 1/4in Torx Bits (T6, T8, T10), 1/4in Spanner Bits (4, 6, 8, 10mm), 1/4in Tri-wing (TW1, TW2, TW3, TW4)

40 Piece Flexible Head Ratchet Set

- Durable high grade Steel construction
- Ergonomic, soft grip handle for comfortable handling and reduced user fatigue
- 2 extensions and compact bit set makes this an ideal all-in-one set for any job



253-166

12 Piece Socket Set, 3/8 Inch Square Drive

- Drive size of 3/8 in Square drive type
- Chrome finish
- Chrome-vanadium steel material
- 12 pieces
- Contents include sockets and ratchet



668-5783 12 Piece Metric 3/8 Inch Standard Socket Set with Ratchet, 12 point

3/8 Inch Drive Hex Bit Set

- Heavy-duty Torx bit set
- 11 Piece set
- 3/8 Inch Square driver adapter
- Durable S2 steel construction
- Neat rack holder



262-0274 Torx T8-60

13 Piece Socket Set, 3/8 Inch Square Drive

- Drive size of 3/8 in Square drive type
- Chrome finish
- Chrome-vanadium steel material



487-167 42 Piece Mechanical Tool Kit with Case

32 Piece Socket Set, 1/2 Inch Square Drive

- Chrome Vanadium for excellent strength and corrosion resistance
- Soft comfortable ratchet handle
- Sizes marked directly on the holders
- Strong latch for secure closing
- Sturdy case for clear and easy storage



229-7278 32 Piece Metric 1/2 Inch Deep Socket/Standard Socket Set with Ratchet, 6 point; 12 point

12 Piece Socket Set

- Drive size of 1/2 in
- Square drive type
- Chrome finish
- Chrome vanadium steel material 12 pieces
- Contents include sockets and ratchet



668-5792 12 Piece Metric 1/2 Inch Standard Socket Set with Ratchet, 12 point

29 Piece 1/2in Torx, Hex & XZN Bit Socket Tool Module

- Steel construction for excellent strength and durability
- Soft comfortable reversible quick release ratchet handle for reduced fatigue and easy speedy bit replacement
- Supplied with a full accessory assortment for a complete kit
- Bright red foam helps identify missing parts quickly
- Foam tool modules are designed for regular easy removal from drawers



833-5957 8 x Short Torx Socket Bits (T20 to T60), 4 x Long Torx Socket Bits (T30 to T50), 7 x Short Hex Socket Bits (5 to 14mm), 4 x Long Hex Socket Bits (6 to 12mm), 5 x Short XZn Socket Bits (M05 to M12), 1 x Short L Hex Key (2.5mm)

1/2 Inch Sq Drive Hex Bit Sets

- Hardened and tempered for heavy duty use
- Supplied complete on a rail retaining bar which can be wall mounted or used within a roller cabinet



262-0331 5-12mm, 100mm length

1/2 Inch Drive Socket Set

- Chrome Vanadium for excellent strength and corrosion resistance
- Soft comfortable handles for reduced fatigue and a tighter grip
- 8-32mm sockets



817-9230 26 Piece Metric 1/2 Inch Standard Socket Set with Ratchet, 6 point

13 Piece Deep Socket Set

- 13 Piece deep socket set
- Drive size: 1/2 in
- Professional quality
- Non-Impact
- Chrome mirror finish for easy cleaning
- Offers high torque without damage to fasteners
- Increased durability
- Chemical Resistant Foam



249-0349 10 □ 24mm

1/2 Inch Square Drive Torx Bit Driver Sets

- Chrome Vanadium steel sockets with S2 screwdriver bits



262-0303 10 Piece 1/2 Inch Bit Socket Set , Torx Bit

1/2 Inch Metric Deep Socket Set

- Made from hardened and tempered chrome vanadium steel
- Make it easy to tighten fasteners and simplifying the turning of rounded corners
- Help reduce fastener wear without contact with the outer of the fastener
- All sockets held upon a socket rail retaining bar



487-173 13 x 1/2 Inch Deep Sockets Size: 10, 11, 12, 13, 14, 15, 16, 17, 18, 19, 21, 22, 24mm

6 Piece Imperial Socket Rail

- Universal sockets in sizes: 9/16", 5/8", 11/16", 3/4", 13/16" and 7/8"
- Available as standard use or impact type



125-0928 Universal sockets in sizes: 9/16", 5/8", 11/16", 3/4", 13/16" and 7/8"

34 Piece 1/2" Drive Imperial/Metric Socket Set

- Imperial and Metric Sets
- Quick-release reversible ratched and accessories
- Durable PP copolymer injection moulded case
- EVA high density foam inserts



224-2250 Contains quick-release reversible ratchet, Bit holder socket, 125mm extension bar, 250mm extension bar, 200mm sliding t-handle, Universal joint, 6-point socket x 19, 12-point socket x 10, storage case with EVA foam insert

3 Piece Imperial 1/2 Inch Wheel Nut Socket Set

- Impact rated 6 point chrome molybdenum sockets
- 3 alloy wheel sockets to cover the most popular sizes for a 1/2 Inch impact wrench
- Storage case complete with individual labelled moulds for each socket size
- All PCL sockets exceed ANSI specifications
- Features two grease rings for superior user grip



137-0910 3 Piece Imperial 1/2 Inch Wheel Nut Socket Set

8 Piece Socket Set 1/2 Inch Square Drive

- Made from chrome vanadium steel
- Hardened and tempered and chrome plated for corrosion protection
- Set supplied on a socket rail retaining bar, which may be wall mounted or used inside a tool box compartment in a roller cabinet



262-0252 E10; E12; E14; E16; E18; E20; E22; E24

1/2 Inch Square Drive Torx Bit Driver Sets

- Chrome Vanadium steel sockets with S2 screwdriver bits



262-0296 10 Piece 1/2 Inch Bit Socket Set , Torx Bit

Impact Socket Sets

- Impact rated 6 point chrome molybdenum sockets
- Storage case complete with individual labelled moulds for each socket size
- All PCL sockets exceed ANSI specifications
- Features two grease rings for superior user grip
- Centre hole is punched through for extra depth on the work surface
- Offers Z-Drive, contacting the flat walls of fasteners for stronger grip
- Thin wall design with chamfered openings for easier mating to fasteners



137-0908 8 Piece Air Impact Socket Set, 1/2 Inch Metric, 12 □ 24mm

137-0909 18 Piece Impact Socket Set, 1/2 Inch Metric, 10 □ 32mm

18 Piece In. Drive Impact Socket Set

- 16 socket bits
- Adapter and extension arm included
- Professional quality
- Offers high torque without damage to fasteners
- Increased durability
- Chrome Molybdenum Steel
- Phosphate finish



125-3055 Kit Contents: in. x 125 mm Pneumatic Extension Arm, in. Pneumatic Socket Adapter, (10-11-12-13-14-15-16-17-18-19-21-22-24-27-30-32 mm) in 6-point air sockets – Metric

10 Piece In. Drive Deep Impact Socket Set

- 10 socket bits
- Professional quality
- Offers high torque without damage to fasteners
- Increased durability
- Chrome Molybdenum Steel
- Phosphate finish



125-3056 10 Piece Metric 1/2 Inch Impact Socket Set , 6 point

6 Piece Imperial Socket Rail

- Low Profile impact sockets
- Allow access to tight spaces
- Ideal for automotive applications
- Industrial grade strength



125-0929 Impact

Square Drive Bi-Hexagon Sockets

- Non impact sockets
- Smooth sandblasted finish
- Knurled grip



- 830-4082** 1/2 inch Square Drive, 8mm
- 830-4091** 1/2 inch Square Drive, 9mm
- 830-4094** 1/2 inch Square Drive, 10mm
- 830-4098** 1/2 inch Square Drive, 11mm
- 830-4101** 1/2 inch Square Drive, 13mm
- 830-4105** 1/2 inch Square Drive, 14mm
- 830-4108** 1/2 inch Square Drive, 12mm
- 830-4111** 1/2 inch Square Drive, 17mm
- 830-4114** 1/2 inch Square Drive, 15mm
- 830-4117** 1/2 inch Square Drive, 16mm
- 830-4120** 1/2 inch Square Drive, 18mm
- 830-4123** 1/2 inch Square Drive, 19mm
- 830-4127** 1/2 inch Square Drive, 20mm
- 830-4133** 1/2 inch Square Drive, 23mm
- 830-4139** 1/2 inch Square Drive, 22mm
- 830-4142** 1/2 inch Square Drive, 24mm
- 830-4032** 3/8 inch Square Drive, 10mm
- 830-4035** 3/8 inch Square Drive, 8mm
- 830-4038** 3/8 inch Square Drive, 9mm
- 830-4041** 3/8 inch Square Drive, 11mm
- 830-4044** 3/8 inch Square Drive, 12mm
- 830-4048** 3/8 inch Square Drive, 13mm
- 830-4050** 3/8 inch Square Drive, 15mm
- 830-4054** 3/8 inch Square Drive, 16mm
- 830-4057** 3/8 inch Square Drive, 14mm
- 830-4060** 3/8 inch Square Drive, 19mm
- 830-4063** 3/8 inch Square Drive, 17mm
- 830-4066** 3/8 inch Square Drive, 18mm
- 830-4072** 3/8 inch Square Drive, 21mm
- 830-4076** 3/8 inch Square Drive, 22mm
- 830-4079** 3/8 inch Square Drive, 20mm
- 830-4085** 3/8 inch Square Drive, 23mm
- 830-4088** 3/8 inch Square Drive, 24mm

Insulated Non-Impact Sockets

- Each tool is injection moulded
- Nylon 11 insulation
- 1/2 Inch Square drive
- 8mm to 32mm sizes available



- 911-1402** 8mm
- 911-1409** 10mm
- 911-1411** 12mm
- 911-1415** 13mm
- 911-1421** 16mm
- 911-1424** 14mm
- 911-1430** 17mm
- 911-1433** 18mm
- 911-1437** 19mm
- 911-1446** 20mm
- 911-1455** 24mm
- 911-1443** 22mm
- 911-1459** 25mm
- 911-1461** 27mm

1/4In Square Drive Hexagon Sockets

- Non impact sockets
- Smooth sandblasted finish
- Knurled grip



- 830-3988** 1/4 inch Square Drive, 4mm
- 830-3990** 1/4 inch Square Drive, 5mm
- 830-3994** 1/4 inch Square Drive, 5.5mm
- 830-4000** 1/4 inch Square Drive, 7mm
- 830-4004** 1/4 inch Square Drive, 8mm
- 830-4007** 1/4 inch Square Drive, 6mm
- 830-4010** 1/4 inch Square Drive, 11mm
- 830-3997** 1/4 inch Square Drive, 4.5mm
- 830-4016** 1/4 inch Square Drive, 10mm
- 830-4022** 1/4 inch Square Drive, 13mm
- 830-4026** 1/4 inch Square Drive, 14mm
- 830-4029** 1/4 inch Square Drive, 12mm
- 830-4013** 1/4 inch Square Drive, 9mm

1/2 Inch Drive Impact Socket Hexagon

- Chrome Molybdenum Material
- Thick walls prevent breakage
- For use with 1/2 Inch impact wrenches
- PCL branded with sizes printed clearly on body of socket



- 137-0915** 13mm
- 137-0918** 17mm
- 137-0919** 19mm
- 137-0920** 21mm
- 137-0921** 22mm
- 137-0922** 24mm
- 137-0924** 17mm
- 137-0925** 19mm
- 137-0926** 21mm

Drive Ratchet Handle

- Made from high grade alloy steel
- Ergonomically designed
- 72 teeth
- Ideal for industrial use



912-5404 1/4 Inch
668-5834 1/4 Inch extendable handle

Drive Ratchet Handle

- Ratchet handle
- 3/8-inch square drive
- Forward and reverse selector
- Quick-release push button for easy socket change
- 72 teeth
- Chrome-vanadium steel with mirror-polished finish
- Polypropylene and thermoplastic



912-5408 3/8"

Drive Quick Release Reversible Ratchet Handle

- 48-tooth strong mechanism
- Switch pawl allowing the ratchet to be used in reverse
- Quick release allowing sockets to be changed quickly and efficiently
- Manufactured from chrome vanadium steel for enhanced durability
- High torque allowing



194-4595 3/8 in, 200 mm length

'Breaking' Ratchet Handle

- Designed to 'break' at a predetermined torque value, clockwise or anti-clockwise
- Reset by returning to in-line position
- Ideal for use in low torque applications, production or in restricted spaces
- BS EN ISO 9002:1994; A.Q.A.P.4 Edition 2 - Number 19 UM01; ISO 6789:1992
- CE marked in compliance with European Directives
- 1/4 Inch drive size



663-881 0.2-2Nm
663-897 1-10Nm

1/4 Inch Socket Drive Wrench Ratchet Handle

- Made from high grade alloy steel
- Ergonomically designed
- Ideal for industrial use



253-419 1/4 Inch

3/8 Inch Socket Drive Wrench Ratchet Handle

- Made from high grade alloy steel
- Ergonomically designed
- Ideal for industrial use



253-172 3/8"
668-5843 3/8 Inch extendable handle

Drive Ratchet Handle

- 1pc- 1/2 in drive extendable ratchet handle
- Overall length: 305-445mm+-5mm ,72 teeth
- Mirror finished push button



668-5846 1/2 Inch extendable
912-5417 1/2"

Dial Torque Wrench

- Manufactured to ISO6789
- Easy to read SI and Imperial unit analogue dial
- Clockwise and anti clockwise measurement is possible with double ended ratchet as standard
- Accuracy +/- 3% of reading



575-649 8-40Nm 3/8in drive
815-515 6-80Nm 1/2 Inch drive
815-521 20-215Nm 1/2 Inch drive
575-633 0.3-4Nm 1/4in drive

Drive Quick Release Reversible Ratchet Handle

- 48-tooth strong mechanism
- Switch pawl allowing the ratchet to be used in reverse
- Quick release allowing sockets to be changed quickly and efficiently
- Manufactured from chrome vanadium steel for enhanced durability
- High



194-4594 1/4 Inch, 150 mm length

Mini Head Reversible Ratchet Handle

- Ratchet mechanism is reversible with all critical parts
- Heat treated for strength and durability
- Manufactured from Chrome-Vanadium Steel
- Black Chrome finish



668-5786 3/8 Inch Ratchet Spanner, Square

1/2 Inch Reversible Socket Wrench

- Maintenance-free 1/2 inch sealed ratchet head that allows for longer lasting tool life and consistent quality in completed work
- Ultra-compact square drive head that fits a variety of metric and imperial socket sizes making it a versatile and essential piece of equipment for everyday usage
- Reversible switch for quick direction change with minimal user adjustment



253-116 1/2" Drive quick release reversible ratchet handle with black nylon injection grip (24 teeth pawl type)
189-1329 1/2 Inch Ratchet with Ratchet Handle, 150 mm Overall

Insulated Torque Wrenches

- Each tool is injection moulded with Nylon 11 insulation
- IEC 60900:2004 specification
- Easy to read Window scale
- Reversible action



911-1531 1/2"
911-1522 3/8"

Open Ended Spanner

- Manufactured to ANSI standard from Chrome Vanadium Steel with a bright Chrome finish



495-3699	10x11mm
495-3706	12x13mm
495-3712	14x15mm
495-3728	16x17mm
495-3734	18x19mm
495-3740	20x22mm
495-3756	21x23mm
495-3762	24x27mm
495-3778	30x32mm
495-3784	6x7mm
495-3807	8x9mm
495-3813	17x19mm
495-3829	22x24mm
495-3835	24x26mm
495-3841	8x10mm

Combination Spanner - Straight

- Ratcheting ring end
Flat pattern
31CrV3 steel
Mirror chrome finish



192-3707	8mm, Metric, 136 mm Overall
192-3709	11mm, Metric, 168 mm Overall
192-3712	14mm, Metric, 193 mm Overall
192-3713	17mm, Metric, 233 mm Overall
192-3714	19mm, Metric, 250 mm Overall

Combination Ratchet Spanner

- Metric ratcheting combination spanners



487-034	13mm
487-038	17mm
487-056	10mm
487-270	24mm
487-040	22mm
487-044	19mm
487-208	8mm
487-286	30mm

Combination Spanner

- Manufactured to ANSI standard from Chrome Vanadium Steel with a bright Chrome finish



495-3655	6mm, Metric, 124 mm Overall
495-3661	7mm, Metric, 129 mm Overall
495-3677	8mm, Metric, 136 mm Overall
495-3447	10mm, Metric, 161 mm Overall
495-3453	11mm, Metric, 168 mm Overall
495-3475	13mm, Metric, 180 mm Overall
495-3481	14mm, Metric, 193 mm Overall
495-3504	16mm, Metric, 207 mm Overall
495-3510	17mm, Metric, 227 mm Overall
495-3532	19mm, Metric, 250 mm Overall
495-3548	20mm, Metric, 260 mm Overall
495-3560	22mm, Metric, 295 mm Overall
495-3582	23mm, Metric, 295 mm Overall
495-3605	27mm, Metric, 362 mm Overall
495-3611	30mm, Metric, 394 mm Overall
495-3627	32mm, Metric, 429 mm Overall
495-3649	36mm, Metric, 510 mm Overall

Combination Spanner Ratchet Head

- Ideal for awkward and hard to reach areas thanks to the 180° movement of pivot-head
Manufactured to ANSI Standard
Chrome Vanadium Steel with a bright Chrome finish



487-185	11mm
487-189	8mm
487-214	19mm
487-218	17mm
487-220	10mm
487-264	13mm

Ring Spanner

- Manufactured to ANSI standard from Chrome Vanadium Steel with a bright Chrome finish
Metric sizes



495-3879	12x13mm
495-3891	16x17mm
495-3908	17x19mm
495-3942	21x23mm
495-3958	22x24mm
495-3964	30x32mm

Insulated Open Ended Spanners

- Each tool is injection moulded
Nylon 11 insulation
IEC 60900:2004 specification
Warning thumb stop



911-1193	13mm
911-1187	10mm
911-1203	17mm

Insulated Ring Spanners

- Each tool is injection moulded
Nylon 11 insulation
IEC 60900:2004 specification
Single Ended with 60° Offset Head
Fully insulated across the entire body
Heavy-duty spanners for use in any application
Available in a various sizes



911-1281	13mm
911-1285	17mm
911-1288	10mm
911-1294	19mm

Insulated Ratcheting Ring Spanners

- Each tool is injection moulded
Reversible for added flexibility
Nylon 11 insulation
IEC 60900:2004 specification
Available sizes: 13 x 17 mm, 17 x 19 mm, 21 x 26 mm or 24 x 30 mm



911-1308	10mm
911-1310	13mm
911-1326	17mm
911-1487	Reversible 13x17mm
911-1496	Reversible 17x19mm

Hexagon Nut Driver Set

- Set of five nut drivers
Made from chrome vanadium molybdenum steel blade material
Tip size of 6 mm, 7 mm, 8 mm, 10 mm, 13 mm
Hexagon tip type
VDE/1000 V approved



182-9772	Set of 5
----------	----------

Multi-Purpose Cabinet Key

- 6.5mm and 8.1mm square sockets
- 6.4mm (¼ in) AF Hex socket
- 9.8mm triangular socket
- 9mm winged key drive
- Hex to ¼ in square drive adapter
- 7mm slotted blade
- Pozidriv drive screwdriver bit



- 439-3019 Chrome finish
- 439-3025 Zinc alloy finish

Universal Cabinet Cross Wrench Key

- Designed to operate the locking mechanisms of a wide range of systems including gas, electric and water cupboards as well as technical equipment including air conditioning, stop valves and mains consoles



- 841-7005 Aluminium 4-way Control Cabinet Key

Die-Cast Zinc Key

- Die cast zinc double bit key
- For use with quarter-turn cam locks



- 192-9656 Die Cast Key

6 Piece Miniature Nut Spinner Set

- Miniature metric nut drivers
- Black anodized Carbon Steel blades
- Nickel plated Chrome Vanadium handles
- Hardened socket to 47 - 56 HRC
- Revolving heads
- Tommy bar included
- Supplied in plastic ABS case



- 541-6882 Nut Driver Set, Hexagon Tip, 3.0 x 25mm (Green), 3.5 x 25mm (Purple), 4.0 x 25mm (Brown), 4.5 x 25mm (Blue), 5.0 x 25mm (Dark Green), 1 x Tommy Bar

C Hook Wrenches

- Adjustable C hook wrenches for use in a wide range of maintenance and repair applications
- Thin profile for working in hard to access narrow spaces
- Drilled hole for lanyard attachment or easy storage
- Black finish



- 828-0239 19-51mm
- 828-0241 51-120mm
- 828-0245 Chain adjust wrench
- 828-0248 32-76mm

Universal Double-Key Box

- Cabinet keys and in bits
- Multifunctional universal key box
- Large opening angle for good removal of the inserts
- Drive identification marking
- Ergonomically shaped for better handling
- Double-Key Length: 110 mm
- Weight: 165 g
- Fits nicely in your pocket or tool bag



- 228-1570 Fibre Reinforced Plastic 4-way Universal Key

Universal Control Cabinet Key

- JointKey
- 360° rotating cross key heads
- Drive identification marking
- Twist mechanism for different profiles
- Forms to a T-handle with higher torque
- Made of die-cast zinc and reinforced fibreglass plastic
- Dimensions: 130 x 38 mm



- 228-1568 8 in 1, Square socket (size: 5 mm, 6 mm, 7 mm, 8 mm), Triangle socket (size: 7 mm, 8 mm, 9 mm), Two Way Key: 3 - 5 mm
- 228-1569 13 in 1, Square socket (sizes: 5 mm, 6 mm, 7 mm, 8 mm, 9 mm), Triangle socket (sizes: 6 mm, 7 mm, 8 mm, 9 mm, 10 mm), Two Way Key: 3 - 5 mm, 1/4 in. Square, 1/4 in. Hexagon for bits

Soft Feel Handle Nut Spinners

- Ergonomically designed comfort grip handles
- Hardened steel heads



- 499-2329 7mm
- 499-2335 8mm
- 499-2341 5.5mm
- 499-2357 10mm
- 499-2379 5mm
- 499-2385 6mm
- 499-2391 4mm

Standard Handle Nut Spinners

- Solid, red plastic (cellulose acetate), fluted design handle offers a comfortable and safe grip and it is securely fitted to the shaft



- 460-1691 5.5mm
- 460-1708 6mm
- 460-1720 7mm
- 460-1736 8mm
- 460-1685 5mm
- 460-1742 10mm

Nut Splitter

- Supported nut sizes of up to 9/16 in Withworth, 5/8 in BSF (British Standard Fine) and 1 in AF (across flats)
- Meets American ANSI/ESD S20.20:2014 and British BS EN 61340-5-1:2007 electrostatic control standards.



- 539-570 Nut Splitter For Nut Sizes Up to 9/16 in Withworth, 5/8 in BSF, 1 in AF in

5 Piece Nut Driver Set

- Ergonomically designed handle, optimising balance between comfort and torque
- Comfortable soft grip
- Chrome Vanadium Steel, Matt Chrome
- EVA module



- 125-3062 Hex Nut Driver Set, 6 mm, 7 mm, 8 mm, 10 mm, 13 mm Tip, 125 mm Blade, 225 (6 mm C-PLUS Nut Driver) mm, 235 (10

Hydraulic Nut Splitter Kit

- Hydraulic nut splitter kit
- 10-ton hydraulic ram and ram attachment
- 5 cutting blades suitable for 3/8-inch, 1/2-inch, 5/8-inch, 3/4-inch and 1-inch nut sizes
- Plastic oil bottle
- Supplied with a red carry case
- Complies with ANSI/ESD S20.20:2014 and BS EN 61340-5-1:2007 Electrostatic Control Standards



- 423-6691 Nut Splitter For Nut Sizes 3/8 Inch to 1-7/8"

Strap Wrench

- PVC handle material
- Plastic handle type
- Steel strap material
- Strap wrench type



- 144-7965 101.6mm Jaw Capacity
- 542-3751 155mm Jaw Capacity

7 Piece Nut Spinner Set

- Ergonomically designed handle, optimising balance between comfort and torque
- Comfortable soft grip



- 460-1758 Nut Driver Set, 4, 5, 5.5, 6, 7, 8, 10mm Tips, 226 mm Overall

Ball Joint Nut Splitter

- The parallel action of the cutter cracks nuts on one side, without damage to bolt threads
- Angle design with 360° rotating cutter allows use in difficult to reach locations
- Drop forged frame. Length 6 1/4 Inch for use on nuts with 1/8 in to 15/16 in across flats.



- 618-8831 Nut Splitter For Nut Sizes 1/8 to 15/16 in

C Hook Wrenches

- High-quality 6 Piece set, supplied complete in a PVC wallet
- Chrome plated with mirror finish
- Heat treated to HRC 42 to 48 Degrees



- 449-9864 6 Pieces, 8 to 19 mm

Security Screwdriver Sets

- For use on all security Star type fasteners
- Supplied complete in a blow-moulded plastic storage case
- Manufactured from high grade chrome vanadium steel
- Set includes Torx Screwdrivers: T8, T9, T10, T15, T20, T25, T27, T30, T40 & Torx Keys: T8, T9, T10, T15, T20, T25, T27, T30, T400



499-2521 18 Piece Torx driver set

Tamperproof Drivers

- Designed specifically to fit the System Zero® tamperproof screws.
- The drivers have a hardened steel head, forged shaft and Cellulose Acetate Fluted handles.
- High-quality materials ensure long life and safe operation even at the high torque.



516-344 ZE5 Handle Driver

Multi-Bit Screwdrivers

- Quick bit changes
- Strong durable Steel construction for long tool life
- Comfortable handle for extended use



573-384 4in1 set with interchangeable bits
241-7769 2in1 Stubby screwdriver

Tamperproof Screw Bits

- Hexagon shaft section (1/4 Inch across flats) which enables them to locate into 1/4 Inch square drive adaptor.



516-334 Bit 1/4in, M5
542-116 Bit No.2
542-122 Bit No.1

Screwdriver Bit Sets

- Manufactured from high grade alloy steel
- Suitable for use with power tools



615-9209 32 Piece assorted
615-9170 8 Piece tamperproof
615-9215 8 Piece Torx
615-9221 8 Piece hexagon

Magnetic Easy Link/Easy Lock Bit Holder

- Inserting and removing the bit is possible with one hand motion
- 1/4 Inch hexagon shank
- 60mm long



125-0431 Bit Holder

Impact Magnetic Nut Setter

- 1/4" hexagon shank
- 50mm long



125-0416 8mm
125-0415 7mm
125-0417 10mm
125-0420 13mm
125-0414 6mm
125-0421 1/4 Inch
125-0423 5/16"

Magnetic Nut Setter

- 1/4" hexagon shank
- 50mm long



125-0400 5.5mm
125-0402 7mm
125-0403 8mm
125-0405 10mm
125-0401 6mm
125-0404 9mm
125-0406 11mm
125-0407 12mm
125-0408 13mm
125-0409 17mm
125-0410 1/4 Inch
125-0412 5/16"
125-0413 7/16"

Penknife Hexagonal Sets

- Metric and imperial sets of hexagon keys which fold into a convenient penknife style handle
- Keys have blackened finish, steel handle is bright zinc-plated



537-754 9 Piece imperial long arm, 5/64 □ 1/4in
537-760 9 Piece metric, 1.5 □ 8mm
314-2977 7 Piece metric, 2.5 mm, 3 mm, 4 mm, 5 mm, 6 mm, 8 mm, 10mm
451-8993 7 Piece metric, 2.5 mm, 3 mm, 4 mm, 5 mm, 6 mm, 8 mm, 10 mm
451-9003 9 Piece imperial short arm, 0.05 □ 3/32in

Hexagon Ball Drivers

- Suitable for all types of hex screws
- Ball driver allows screws to be tightened/loosened at angles up to 25°
- Gorilla grip handle stronger than steel
- Longer length keys for additional leverage and extended reach



542-3509 15 Piece 1.27-10mm
542-3515 9 Piece 1.5-10mm

L-Shape Hex Key Miniature Set

- Made from chemically blackened, chrome vanadium steel
- High-quality materials ensure long and safe service
- The set is supplied in handy compartmental plastic wallet
- 8 Piece set contains 0.7-4mm sizes



450-1002 0.7 □ 4mm

Plastic Holder Sets

- Short arm L-shaped hexagon key sets in tempered chrome-vanadium steel, with chemically blackened finish
- Contains 10-pieces 1.5-10mm, supplied in plastic holder



537-748 10 piece L Shape Metric Hex Key Set, 1.5 □ 10mm

Rack Mounted Driver Sets

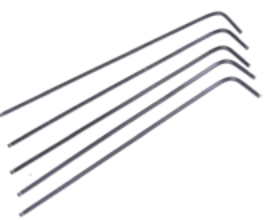
- Available in metric or imperial each with bench mounting metal storage rack
- Keys manufactured from chrome-vanadium steel, with chemically blackened finish



537-811 Metric

Individual L-Shaped Ball Drivers

- Chemically blackened finish
- High quality, L shaped hex keys
- Long and short arm options across the range



735-059 1.5mm
735-065 2mm
735-071 2.5mm
735-087 3mm
735-093 4mm
735-100 5mm
735-116 6mm

4 Piece Slotted Insulated Screwdriver Set

- 1000Vac and 1500Vdc voltage isolation
VDE approved
DuoTech ergonomic handle
Tested according to DIN EN 60900: 2004
For full set contents visit our website



- 125-3092 3 x slotted, 1 x Phillips
- 125-3093 3 x slotted, 1 x Pozi

10 Piece VDE Insulated Screwdriver Set

- Insulated 1000V VDE screwdrivers with TPR grip and polypropylene injected shafts and handles
Heat treated to HRC: 55 - 59
Contains flat, Pozi and Phillips tips
Supplied complete with zip case



- 253-015 82 Piece Engineers Tool Kit with Case

VDE Insulated Screwdriver Set

- Slotted and Pozidrive screwdrivers
VDE approved tools for working in rigorous health and safety standards
VDE voltage tester included
Ergonomic soft grip handles



- 875-5812 7 Piece Phillips & slotted tip
- 875-5821 7 Piece Pozidriv & slotted tip

Insulated Nut Spinners

- 150mm stud clearance
Each tool is injection moulded
Nylon 11 insulation
IEC 60900:2004 specification



- 911-1500 2BA
- 911-1503 0BA
- 911-1506 1BA
- 911-1512 4BA
- 911-1519 3BA
- 911-1525 8mm
- 911-1528 10mm

Insulated Screwdrivers

- For live working up to 1000 V ac or 1500 V dc
Chrome Vanadium Molybdenum steel blade (phosphate finish)
C-PLUS soft-grip handle
Individually tested as per DIN EN 60900: 2004 norm



- 125-3079 3x100mm
- 125-3080 3.5x100mm
- 125-3081 4x100mm
- 125-3082 5.5x125mm
- 125-3083 6.5x150mm
- 125-3087 Pz2x100mm
- 125-3088 MOD1x80mm
- 125-3089 MOD2x80mm
- 125-3078 2.5x75mm
- 125-3084 Ph1x80mm
- 125-3085 Ph2x100mm
- 125-3086 Pz1x80mm

Insulated Standard Screwdriver

- Each tool is injection moulded
Nylon 11 insulation
Ergonomic grip offers you comfort and control
IEC 60900:2004 specification



- 911-1092 Terminal 75mm
- 911-1095 Terminal 100mm
- 911-1102 150x5x1mm
- 911-1106 200x5x1mm
- 911-1109 75x5x1mm
- 911-1112 Parallel Blades 4"
- 911-1115 125x6.5x1.2mm
- 911-1121 Parallel Blades 6"
- 911-1124 Parallel Blades 8"
- 911-1128 Parallel Blades 10"
- 911-1130 Pozi 75x5xNo1
- 911-1134 Pozi 200x5xNo1
- 911-1137 Pozi 75x3xNo.0
- 911-1118 100x6.5x1.2mm
- 911-1146 Pozi 150x8xNo3

Screwdriver Sets

- Each precision screwdriver is made from Chrome Vanadium Steel, allowing for greater strength and durability and longer tool life
The set contains 6 pieces covering the most common sizes, which means added versatility for use across a wide range of applications
Designed with an ergonomic handle for ultimate comfort and even force transfer for better efficiency and less effort



- 125-3101 4x slotted, 2 x Phillips
- 125-3102 4x slotted, 2 x Pozi

6 Piece Electronics Screwdriver Sets

- Designed for delicate precision engineering and electronics applications.



- 125-3106 4 x Slotted Screwdrivers (H01: 1.5 x 40 mm, H01: 2.0 x 60 mm, H01: 2.5 x 80 mm, H01: 3.0 x 80 mm) & 2 x Phillips Screwdrivers (H02: PH00 x 60 mm, H02: PH0 x 60 mm)
- 125-3108 6 x Torx Screwdrivers (T5, T6, T7, T8, T9, T10)
- 125-3107 4 x Slotted Screwdrivers (1.5 x 40 mm, 2.0 x 60 mm, 2.5 x 80 mm, 3.0 x 80 mm) & 2 x Pozidriv Screwdriver (PZ00 x 60 mm, PZH0 x 60 mm)

9 Piece Soft Feel Torx Driver Set

- Set consists of T6 to T30
Zinc blasted and lacquer finished, hardened steel
Supplied in a zipped wallet



- 499-2408 Torx Insulated Screwdriver Set, 9-Piece

Classic Screwdrivers

- Hardened chrome-vanadium steel shaft
Fitted with solid red, cellulose acetate, fluted handles



- 450-3575 100x3mm
- 736-131 300x8mm

Slotted Screw Gripping Screwdrivers

- Blades have a sliding sleeve operated by a plastic collar (just below the handle) which, when pushed down, causes the blade tip to split apart and firmly wedge against the sides of the screw slot.
Blade thickness is defined in the released condition



- 547-953 3in 0.02in tip
- 547-969 8in 0.02in tip
- 547-975 6in 0.031in tip
- 547-981 8in 0.037in tip

Tin Cvd Screw Bits

- 1/4 Hexagon Shank
25 mm long
TIN CVT Coating



125-0356 Ph2

125-0359 Pz2

125-0361 Tx10

125-0362 Tx15

125-0363 Tx20

Power Tool Cross Head Bit

- Long life bits with an extremely hard titanium nitride surface finish which absorbs torque peaks and prolongs bit life



449-9454 Phillips 90x1mm

449-9460 Phillips 90x2mm

Torsion Phillips Screw Bits

- 1/4 Inch Hexagon Shank
25 mm long
Longer torsion zone



125-0347 Tx30

125-0348 Tx40

Extra Hard Pozidriv Screw Bits

- 1/4" hexagon shank
25mm long
Extra hard coating



125-0335 PZ2

Impact Screw Bits

- 1/4" Hexagon Shank
25 mm long



125-0376 PH1

125-0379 PZ1

125-0380 PZ2

125-0381 PZ3

Torx Tamper Screw Bits

- 1/4" hexagon shank
25mm long



125-0370 TX10

125-0372 TX20

125-0373 TX25

Torsion Phillips Screw Bits

- 1/4" hexagon shank
25mm long
Longer torsion zone



125-0340 Pz1

125-0338 Ph2

125-0341 Pz2

125-0351 Slotted 4.5x0.6mm

125-0352 Slotted 5.5x0.8mm

Power Tool Cross Head Bit

- 1/2 inch, hexagonal screwdriver drive bits manufactured to DIN3126-E6-3 standard
Particularly suited for high torque screwdriving, i.e. driving machine screws to a dead stop
Long-life bits with an extremely hard titanium nitride surface finish
Absorbs torque peaks and prolongs bit life



449-9482 Pozidriv screwdriver bit, PZ1 90mm

449-9498 Pozidriv screwdriver bit, PZ2 90mm

449-9498 Pozidriv screwdriver bit, PZ3 90mm

Impact Screw Bits

- 1/4" Hexagon Shank
25 mm long



125-0382 TX10

Din Standard Circlip Pliers

- Fitted with red PVC vinyl dipped covered handles
- External types incorporate return springs
- Black oxidised finish



- 541-6781 Internal bent 3-10mm
- 541-6753 Internal straight 3-10mm
- 541-6769 Internal straight 8-25mm
- 541-6826 External straight 3-10mm

Combination Pliers

- Optimum cutting edge geometry
- Precision milled
- Heat treatment to exacting standards
- Redesigned DuoTech grips



- 875-5761 160mm
- 875-5767 140mm
- 875-5770 180mm
- 875-5773 200mm

VDE Standard Diagonal Cutter

- Constructed from high grade steel with mirror polish and slip guard
- Two component handle for ease of use - ensures a comfortable grip over long periods of use
- VDE tested and confirms to IEC 900 1000 V
- Made in Germany



- 496-997 Combination pliers

Long Nose Pliers

- Ideal for precision work with soft wire
- High carbon steel jaws
- Ergonomic plastic grips



- 847-3737 Snipe nose 130mm
- 847-3752 Snipe nose 120mm

Engineers Pliers

- Straight tip combination pliers
- Made from steel
- Overall length of 160 mm
- Hard wire cutting capacity of 1.6 mm
- Screw cutting capacity of M3.5
- Safety note: The insulating properties of these pliers are not guaranteed and they should NOT be used on or near energised systems



- 541-7087 Combi 160mm

High Carbon Steel Long Nose Pliers

- Ideal for electricians or tradesmen that need to grip and cut wires, bend loops or grip small objects



- 847-3793 Long nose
- 847-3803 Bent nose 200mm

Long Nose Pliers

- VDE Tested
- Strong and Hardwearing body
- Specially designed ergonomic handles



- 847-3756 Radio 140mm

Micro-Tek ESD Shears

- Strong and robust
- Size and shape reflect the latest advances in enhanced ergonomics



- 847-2961 Kevlar fibre optic

Engineers Pliers

- Induction hardened with a natural finish to ensure a long, reliable working life
- Ergonomically designed bow handles with PVC grip provide maximum leverage and comfort



- 541-7043 Snipe nose 160mm
- 541-7093 Radio 140mm
- 541-7071 Snipe nose 120mm

Cr-V Snipe Nose Pliers

- Made from chrome vanadium steel
- Ergonomic handles, make an excellent choice for electricians, designers etc.



- 847-3765 120 mm Overall, Straight Tip

Combination Pliers

- Dual-component non-slip handle with finger guard
- Made from drop-forged steel with bright natural finish



- 487-230 150mm

Long Nose Pliers

- The Unigrip ergonomic handles, make these pliers suitable for cutting soft and hard wire



- 875-5809 160mm
- 875-5802 200mm

General Purpose ESD Pliers

- Ergonomic, comfortable grip
- Meet standard cutting and load test
- Serrated jaw



- 487-090 160mm

Long Nose Pliers

- Made from chrome vanadium steel (Cr-V metal)
- Overall length of 200 mm
- Straight tip, long nose pliers type
- VDE 1000 V approved



- 847-3724 Radio 200mm

Interchangeable Multi-Position Circlip Pliers

- Cushion-grip handles and spring loaded for faster comfortable operation



- 541-7267 External 6.4-25.4mm
- 182-436 External/internal 6.4-48mm/6.4-25.4mm

6 Piece Measuring And Cutting Tool Kit With Foam Inlay

- Six pieces
- General-purpose compact workshop measuring and cutting toolset
- Contains precision measuring tools and heavy-duty cutting tools
- The bright red foam helps identify missing parts quickly
- Foam tool modules are designed for regular easy removal



833-5944 Kit contains:
Electricians scissors
Straight snip
Snap-off utility knife
Measuring tape
Stainless steel ruler
Leaf metric feeler gauge

15 Piece Hey Key Set

- Long arm hex key set made for professional precision. Polished finish
- Supplied with a plastic caddy, making it super easy when needing to be transported and for "on the go" jobs



833-5913 Kit contains:
T-handle Hex keys - (metric) 2, 2.5, 3, 4, 5, and 6 mm
Ball end hex Key - (metric) 1.5, 2, 2.5, 3, 4, 5, 6, 8 and 10 mm

2 Piece Electricians Tool Kit With Foam Inlay

- Various ranges of quality assured tool sets for addition to tool cabinets



833-5966 2pc Climper and Stripper Set

3 Piece Locking Pliers Set

- Ideal for tightening, clamping, twisting and turning
- Ideal for precision work and hobbies
- Hardened teeth are designed to grip from any angle
- Classic trigger release
- Nickel plated



847-3762 Chrome Molybdenum steel

847-3768 Chrome Vanadium steel

Micro-Tek ESD Shears

- Electronic cutters
- Jaw length of 20 mm
- Maximum cutting capacity of 0.8 mm
- Overall length of 128 mm



847-2967 Mini

23 Piece 1/2 Inch Socket Set Tool Module

- Steel construction for excellent strength and durability
- Soft comfortable reversible quick release ratchet handle for reduced fatigue and easy speedy bit replacement
- Supplied with a full accessory assortment for a complete kit
- Bright red foam helps identify missing parts quickly
- Foam tool modules are designed for regular



833-5950 23pc 1/2" Drive Socket Set with Ratchet

10 Piece Electronics Tool Kit With Foam Inlay

- Phosphated driver tips for corrosion protection, increased strength and longer tool life
- Bright red foam compartments help small parts and fixings stand out



833-5919 10pc Precision Plier and Screwdriver Set

3 Piece Plier Set, 250 Mm Overall

- Various ranges of quality assured tool sets for addition to tool cabinets



833-5972 3pc Softgrip Pliers Set

Diagonal Cutters

- Duo Tech soft grip handles
- Polished finish (Electrofilmed)
- DIN/ISO 5749, TS 11071



875-5792 140mm

875-5795 160mm

875-5799 180mm

ESD Side Cutters

- Suitable for SMD and leads
- Facilitates optimum access
- Spring action



864-0772 4.5"

864-0785 5"

864-0798 5" plus safety clip

864-0805 5" heavy

4 Piece Circlip Plier Set, 300 Mm Overall

- 180mm External Circlip Pliers (Straight with Spring)
- 180mm External Circlip Pliers (Bent with Spring)
- 180mm Internal Circlip Pliers (Straight)
- 180mm Internal Circlip Pliers (Bent)



833-5929 4pc Circlip Pliers Set

3 Piece Plier Set, 250 Mm Overall

- Various ranges of quality assured tool sets for addition to tool cabinets



833-5931 3pc VDE Insulated Pliers Set

3 Piece Plier Set, 250 Mm Overall

- Various ranges of quality assured tool sets for addition to tool cabinets



833-5938 3pc Pliers and Adjustable Wrench Set

Diagonal Cutters

- Suitable for cutting all wires (Inc. piano wire). Polished finish.
- DuoTech softgrip handles.
- DIN/ISO 5749, TS 11071



875-5806 Power 180mm

Stainless Steel Pliers

- 25mm long stainless steel jaws
- Fitted with moulded plastic grip with lightweight return spring
- Overall length 130mm



- 536-341** Serrated flat
- 536-335** Half round
- 536-357** Bent nose

Electronic Round Nose Pliers

- Manufactured from high carbon steel, with smooth, tapered, round jaws



- 847-3780** Side cutters slim
- 847-3784** Side cutters
- 847-3730** Round nose 130mm
- 847-3816** End nipper

General Purpose Electronic Pliers

- Strong pressed steel frame
- Riveted lap joint
- Precision ground 3mm jaw
- Ribbed soft plastic grips and lightweight return spring
- Integral stop



- 606-529** Needle nose
- 606-535** Flat
- 606-541** Serrated jaw

ESD Pliers

- ESD Protected for conducting away static electricity
- All pliers are of box joint design
- Manufactured from high grade steel
- Smooth non-serrated jaw



- 161-063** Flat nose 120mm
- 161-079** Snipe nose 120mm
- 161-085** Snipe nose 145mm
- 864-0782** Flat nose 6"
- 864-0788** Long nose 6"
- 864-0791** Bent nose 6"
- 864-0794** Round nose 5.5"

Din Standard Pliers

- Soft grip dual component handles for ease of use
- Box joint construction
- Manufactured from high-grade steel
- Ergonomically designed sleeves for comfort and effortless use.
- Made in Germany



- 161-142** Round nose

General Purpose ESD Pliers

- Pressed steel frames
- Riveted lap joints
- Precision ground 3mm steel jaws
- Ribbed soft plastic grips and lightweight return spring
- Integral stop prevents handles opening too far



- 245-0536** Needle nose
- 245-0558** Serrated jaw

Plier Sets

- Special tool steel Polished finish (electrofilmed)
- DuoTech soft grip handles
- VDE Approved
- G10 - ISO 5745
- G12 - ISO 5749



- 125-3094** 2 Piece Set - Diagonal cutter & combination plier
- 125-3095** 3 Piece Set - Diagonal cutter, long nose plier & combination plier
- 125-3096** 5 Piece Set - Diagonal cutter, combination plier, 2 x slotted plier, 1 x Pozi plier

Insulated Combination Pliers

- Each tool is injection moulded
- Nylon 11 insulation
- Ergonomic grip offers you comfort and control
- IEC 60900:2004 specification



- 911-1033** Combination 200mm
- 911-1051** Bent nose 200mm

Insulated Pliers

- Made from steel
- Cutting capacity of 1.6 mm
- Jaw depth of 9.2 mm
- Jaw length of 72 mm
- Overall length of 200 mm
- Straight tip, long nose pliers type
- VDE 1000 V approved



- 125-3072** 160mm long nose
- 125-3073** 200mm long nose
- 125-3074** 200mm bent nose

Insulated Pliers

- Special tool steel and chrome finish
- DuoTech soft grip handles
- VDE Approved, ISO 5746, G10 Series



- 125-3065** 160mm
- 125-3066** 180mm
- 125-3067** 200mm

VDE Standard Pliers & Cutters

- Constructed from high grade steel with mirror polish and slip guard
- Two component handle for ease of use
- VDE tested and confirms to IEC 900 1000 V



- 497-007** Diagonal cutter

Diagonal Cutters

- Special tool steel; Chrome finish
- DuoTech soft grip handles
- VDE Approved
- ISO 5749, G12 Series



- 125-3069** 160 mm
- 125-3068** 140 mm
- 125-3070** 180 mm

VDE Insulated Combination Pliers

- Chrome Vanadium Steel



- 847-3715** 200mm

VDE Insulated Pliers

- 45° angled blades
- Ergonomic handles
- Ideal for precision work with soft wire



- 847-3800** Long nose

Insulated Water Pump Pliers

- Ideal for live working up to 1000Vac or 1500Vdc
- 9 position adjustment
- Chrome Vanadium steel
- Phosphate finish
- Soft-grip handles



125-3076 250mm - Multigrip Slip Joint

Utility Pliers

- Right angle teeth grip in all directions
- Undercut tongue and groove positioning channel with 3 to 12 different adjustment dependant on size to prevent slipping
- Reinforced edge to minimise stress breakage
- Uses high carbon C1080 steel for superior performance
- Specially coated for ultimate rust prevention



216-6039 400mm
325-6228 500mm

VDE Standard Pliers & Cutters

- Constructed from high grade steel with mirror polish and slip guard
- Two component handle for ease of use - ensures a comfortable grip over long periods of use
- VDE tested and confirms to IEC 900 1000 V
- Made in Germany



496-987 Water pump pliers

Soft Jaw Utility Pliers

- Adjustment is easy because of a sprung adjuster mechanism, which also prevents the adjusted pliers slipping to another position
- Nylon replaceable jaws are available separately as a set of two on 734-012



734-006 Water Pump Pliers, 250 mm Overall

Box Joint Pliers

- Hardened and tempered throughout for strength and durability
- Narrow/slim heads are ideal for use in confined spaces
- Serrated jaws give positive grip on round, square, triangular, flat and irregular surfaces
- PVC Handle Grip Material
- DIN 5231 D



541-7059 250mm
541-7116 300mm

Water Pump Pliers

- Pliers made from chrome-vanadium steel
- Powerful and robust multiple slip-joint pliers
- Self-locking pliers with anti-slip action
- Narrow jaw profile
- Non-slip grips and hardened jaws.



668-5900 250mm DRV handle
668-5938 250mm
847-3771 VDE waterpump plier box joint 240mm

5 piece Hand Riveter Set

- Hand riveter and rivets (20 mm x 2.4 mm, 20 mm x 3.2 mm, 20 mm x 4.0 mm, 20 mm x 4.8 mm)
- Foam inlay storage type
- This product is not VDE approved



833-5969 5pc Hand Riveter Set

Plier Type Hand Rivet Gun

- Durable aluminium body construction offering corrosion resistance and durability
- Ideal for use with aluminium, steel and stainless steel rivets
- 4 interchangeable nose pieces to accommodate different size rivets - can be used with rivet sizes 2.4, 3.2, 4.0 & 4.8 m
- Spanner included to quickly change nose pieces
- Forged steel handle with ergonomic grip for comfort and control



192-3666 Hand Rivet Gun For 2.4, 3.2, 4.0, 4.8 Mm Rivets

360° Swivel Head Riveter

- Manufactured from chrome steel with hardened steel jaws
- Capable of riveting at any angle through 360°
- Fitted with soft-grip rubber handles



487-141

Standard Riveter

- High-quality steel handles & body
- Case-hardened steel nose
- Rivet gripping action
- Suitable for 3.2 mm, 4 mm rivets
- Rivet head storage in handle
- Mandrel kit required for use with M3 fittings



487-157 Plier Type Rivet Tool

Carbon Steel Ball-Pein Hammer With Fibreglass Handle

- Ball-pein hammer type
- Fibreglass handle material
- Carbon steel head material
- Weight of 450 g



125-0943 450g

125-0944 680g

125-0945 910g

Carbon Steel Hammer With Fibreglass Handle

- Carbon steel hammer
- Two tone colour (black and red) fibreglass handle
- Black satin finished
- High strength characteristics



125-0937 300g

125-0938 500g

RS PRO Lump Hammer

- 4 lb lump hammer
- Manufactured to BS876
- Black epoxy coated heads with polished convex faces
- Securely fitted and moisture-sealed, hickory shafts



251-542

RS PRO Rubber Mallet

- Features a shock-absorbing ash wood handle, for comfort over long periods of use
- Round rubber head
- Ashwood handle
- Versatile and suitable for many applications



539-104 550g

RS PRO Fibreglass Curved Claw Hammer 20oz

- Fibreglass construction with drop forged hardened and tempered steel offering excellent durability and shock absorbent properties
- Black rubber grip handle moulded directly to the shaft, offering enhanced comfort and grip
- Durable hammer built to a professional standard
- Suitable for a variety of tasks
- Curved head ideal for wedging under nails and removing them
- Reduces user fatigue



537-007

RS PRO Curved Claw Hammer 16oz

- Heat treated 16oz medium carbon steel claw head, offering excellent durability and strength
- Carbon steel tubular handle with black PVE moulded casing, providing excellent grip and comfort
- Durable hammer built to a professional standard
- Suitable for a variety of tasks



449-9858

Heavy Duty Scraper Deburrer

- Supplied with a 7 x 120mm triangular blade, ground at both ends for prolonged life
- Wear resistant 'Acetal' handle has a quick change blade collet
- Blade suitable for use on most ferrous and non-ferrous metals and can be easily positioned and locked into the handle at any required length



244-6745 Deburrer

244-6751 Replacement blades

6 Piece Diamond Needle File Set

- Very high quality industrial standard needle files coated with diamond grit enabling them to file materials such as tungsten carbide, ceramics, carbon, glass, hardened steels etc.
- File length is 160mm
- Contents: round profile, half round profile, 3 square profile, square profile, flat/warding profile and hand profile



732-145 160mm Needle File Set

Bastard Engineers File Set

- Ergonomic grip
- Lanyard hole in handles for working at height
- Bright red foam helps identify missing parts quickly
- Foam tool modules are designed for regular easy removal from drawers
- 5x 200mm Bastard Files (Cut Hand, Half Round, Round, Square, Three Square Engineer File.)
- 6x 160mm Needle Files (Flat, Hand, Half Round, Round, Square, Three Square File Needle File.)



833-5953 11pc Standard and Needle File Set

Swiss Pattern Needle File Set

- Comes supplied with flat/warding (barette), knife, round, half flat, hand & square files
- Handle also supports Noga scraper blades
- Wide range of file types to ensure that your application is covered



521-908 160mm, Second Cut Needle File Set

Needle Files

- High quality precision needle files for the fine abrasion, profile cutting and finishing of many common workshop materials
- Each file has a different cross-section as shown and except for the 'hand' and 'warding' which are squared off, all taper to a fine point
- Overall length 160 mm, cutting face 28 teeth per cm (cut no. 1)
- Round file has a diameter of 6.35 mm (0.25 in)



541-6911 Hand

Letter & Number Punches

- Hand punches for permanent identification marking
- Hardened and tempered to give long life and maximum security
- Capable of indenting material up to 40 Rockwell C hardness
- Supplied in sturdy plastic boxes



251-687	5mm engraving set A - Z, &
251-693	6mm engraving set A - Z, &
251-738	3mm engraving set A - Z, &
251-744	8mm engraving set A - Z, &
251-788	6mm engraving set 0 - 9
251-794	8mm engraving set 0 - 9
251-801	4mm engraving set A - Z, &
875-4714	9 Piece 2.5mm number punch, 0 - 8
875-4718	27 Piece letter steel stamp 2.5mm
875-4720	27 Piece letter steel stamp 3.0mm
875-4724	9 Piece 4.0mm number punch, 0 - 8
875-4727	9 Piece 3.0mm number punch, 0 - 8
875-4730	27 Piece letter steel stamp 5.0mm
875-4733	27 Piece letter steel stamp 4.0mm
875-4742	27 Piece letter steel stamp 6.0mm
875-4746	9 Piece 8.0mm number punch, 0 - 8
875-4749	9 Piece 6.0mm number punch, 0 - 8
875-4755	27 Piece letter steel stamp 8.0mm
875-4736	9 Piece 5.0mm number punch, 0 - 8

3 Piece Combination Punch Set

- Made of tool steel
- Black oxide finish for rust prevention
- Knurled body for better grip
- Points precision ground
- Supplied in fitted case



875-4758 105mm

Spring Tension Pin Punch Sets

- 6 punches for inserting and extracting spring tension pins
- Raised pilot end for locating into pins
- Suitable for spiral wrapped spring tension pins
- Made from tool steel with hardened tips



600-896 Spring tension set

626-1497 Punch set

Dot Number & Letter Punches

- Numbers and letters in one 36 Piece set
- Character and size marked on each stamp
- Hardness: HRC 58-60
- Hardened and tempered to give long life



875-4770	4.0mm
875-4774	5.0mm
875-4777	3.0mm
875-4780	10.0mm
875-4786	8.0mm
875-4783	6.0mm

8 Piece Parallel Punch Sets

- High-quality rivet punches forged from steel with a plastic storage case with size markings
- Chemically blackened finish offering prolonged life and corrosion resistance
- Manufactured using durable steel
- Tools are 4"



875-4764 105mm

Electronic Digital Vernier Caliper with LCD Display

- Hardened stainless-steel frame and measuring jaws
- Metric / Inch Conversion Button
- Knurled Locking Screw
- LCD Display
- Depth Measuring Blade
- Caliper Beam
- Thumb-roll Fine Adjustment
- Battery Cover
- Zero Set Button
- Power Button ON/OFF
- External Measuring Jaws
- Step Measuring Faces



243-6615 150 mm Capacity

6 Piece Parallel Pin Punch Sets

- High-quality rivet punches forged from chrome-vanadium air-hardened steel, in plastic stand
- Multi-coating of impact head virtually rules out chipping and swelling
- Polished cylinder shanks
- Tools are 150mm in length
- Octagonal, gold-painted grip shanks

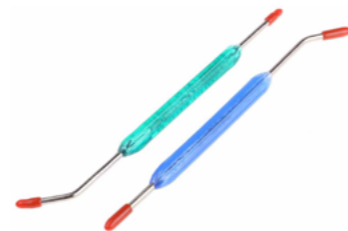


456-3640 3, 4, 5, 6, 8, 10mm

505-8688 2, 3, 4, 5, 6, 8mm

Scribes

- Tungsten Carbide tipped scribes are intended for use on hard or abrasive materials which would rapidly blunt ordinary HSS scribes, e.g., stainless steel, anodised aluminium, ceramic, glass, etc.
- Single and double ended options



394-184 Double tipped

394-190 Straight

394-194 Retractable fine point

6 Piece ESD Tool Kit with Case

- Ideal for handling wires and components in applications and electronic repairs, servicing and maintenance.
- High-quality tools
- Tool storage: Plastic box
- ESD capacity between 6-9 OHM
- With plastic box to storage
- Long nose pliers for easy operation at deep and narrow working space
- Diagonal cutting pliers suitable for copper wire below dia.1.3mm



864-0870 PH0X50, PH1X50, SL2.0X50, SL3.0X50 --50MM
1 pcs130mm long nose pliers
1 pcs115mm diagonal cutting pliers

Hand Ratcheting Crimp Tool

- Ergonomic non-slip main handle and low friction moving handle ensure a comfortable hand grip
- Provides two-hand grip in the final phase of crimping, increasing comfort and productivity
- Full cycle crimp mechanism to ensure consistent, reliable crimp
- Ratchet release mechanism to clear mis-crimps and



683-1623 Crimp Tool for BNC, TNC, N, Ethernet and Thinnet Connectors

ESD Safe Micro End Cutter

- An ESD Micro End Flush Cutter with a narrow jaw designed for precision, straight cuts and is ideal for use in hard to access areas due the narrow head design.
- Anti-reflective phosphating surface treatment
- Maximum cut of 0.81mm (20AWG Copper Wire)
- Cutting force of 3kg
- Overall Length of 132mm
- Steel Thickness of 2mm



238-0814

ESD Safe Micro Needle Nose Pliers

- Anti-reflective phosphating surface treatment
- Overall Length of 136mm
- Steel Thickness of 2mm
- Weight of 60g



249-8673

Automatic Wire Stripper

- Fully automatic wire stripper
- Precision carbon steel laminated stripping blades
- Compact pistol-grip design for increased control and a smooth stripping action
- Adjustable sliding wire stop to preset exact stripping lengths
- Shielded cutter for safety
- Constructed from high-grade polymers and Carbon Steel



382-2847 0.08 to 2.5mm stripping range

5 Piece ESD Tool Kit

- A professional ESD Safe tool kit featuring popular sized cutters, pliers, screwdrivers and tweezers supplied in a ESD safe tool wallet.
- Maximum cut of 1.3mm (16AWG Copper Wire)
- Non sparking design
- Anti-reflection phosphating surface treatment
- Cutting force of 5kg
- Overall Length of 138mm
- Steel Thickness of 2.5mm



249-8656

ESD Fine Curved ESD Safe Tweezers

- A high quality ESD tweezer designed for accuracy and precision and layered with an ESD Safe powder coating for use on or around sensitive equipment.
- Constructed from Low Carbon Austenitic Steel for excellent strength and durability, strong corrosion, chemical resistance and anti-magnetic properties. Reliable, accurate and constructed to last.
- Fine curved tweezer tips



238-0708

ESD Safe Screwdrivers

- Professional and high quality ESD slotted screwdrivers for use with and around sensitive equipment.
- Constructed from Chrome-Vanadium Molybdenum Steel for excellent strength and durability
- Bi-material ergonomic handle to reduce hand fatigue over extended use.
- Complete with a rotating cap enabling quicker more precise action and blackened ends for tip protection.



249-8665 175mm Sotted Precision Screwdriver (2.5mm x 75mm blade)

249-8663 160mm Phillips Precision Screwdriver (PH00 x 60mm blade)

Hydraulic Bearing Puller

- Tungsten Carbide tipped scribes are intended for use on hard or abrasive materials which would rapidly blunt ordinary HSS scribes, e.g., stainless steel, anodised aluminium, ceramic, glass, etc. Single and double ended options



349-7249 8 Piece 10 Ton Puller Set

Heavy Duty Spring Hook

- Ideal for spring removal
Stainless steel shaft
Pulling capacity up to 30kg



405-3294 1 pcs 380 mm 30kg Pulling Capacity Spring Hook

Tweezer Set

- General purpose nickel plated steel tweezers supplied in a handy vinyl wallet
Set contains:
1x straight fine point tweezers, with serrated jaw, 115mm
1x cross-over fine point tweezers (2806) with self-locking jaw, 115mm
1x long cross-over point tweezers (2803) w/flat point & self-locking jaws, 170mm
1x bent fine point tweezers, with dog-lag nose, 145mm
1x rounded point tweezers, with blunt tapering jaw, 115mm
1x stamp tweezers, with blunt spoon nose, 115mm



618-8386 6 Piece Nickel plated

Hydraulic Puller Set

- Heavy duty master set of gear pullers and bearing splitters
8 Ton maximum hydraulic ram and forged puller arms and bearing splitter
Replacement of gears, bearings, and other power transmission components
Supplied complete with carrying case



349-7261 25 Piece

349-7227 2/3 Jaw

Magnetic Pick Up Tool

- Pocket sized tool for picking up dropped items in hard to reach places



444-4094 Tool, retrieving, magnetic, telescopic

Plastic Tweezers

- Excellent tensile and flexural strength, fatigue and creep resistance
Low friction, good wear and abrasion resistance
Low moisture absorption
Excellent chemical resistance (oils, grease, fuels, organic solvents); not resistant to strong acids, alkalis and oxidising



136-9864 115 mm, Delrin Plastic, Tweezers

Economy Tweezers

- Anti-acid/magnetic stainless steel tweezers with serrated handles
Various lengths and point types available
For full range visit our website



136-9836 120mm

136-9838 120mm fine point

136-9851 140mm

136-9832 110mm

Extra Fine Point Tweezers

- High quality for precision manipulation
Manufactured from stainless steel alloy
Needle-like points have smooth gripping surfaces
Overall length 140mm



549-628 140 mm, Stainless Steel, Tweezers

3-Jaw Puller

- Chrome vanadium 3-jaw puller available in 100, 150 and 200mm capacities



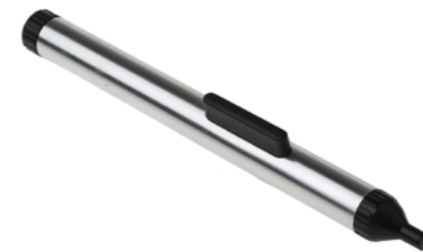
349-7299 100mm

349-7306 150mm

349-7312 200mm

Vacuum Pick-Up Pen Set

- Handheld vacuum pick-up tool
Body manufactured from tubular aluminium with a bright anodised finish
Pick-up Heads consist of a fine steel tube and rubber pick up disc
Pick-up head diameters 4mm, 6mm and 10mm
Not ESD safe



624-9829 20g Lift Capacity Vacuum Pick Up Tool, 152 mm Aluminium With Aluminium Handle

Cutting Tweezers

- High-quality tweezers for cropping and trimming fine wires
Parallel, flush cutting edges ground precisely along their 10mm length
The head profile comes to a point for access in confined spaces
Cuts 0.25 mm diameter copper & 0.1 mm diameter steel wires
Superb brushed finish



540-2029 Carbon steel

General Purpose Tweezers

- High-quality stainless steel serrated handles
Straight and bent point versions incorporate an anti-twist pin
Overall length 150mm



545-187 Bent

545-171 Straight

Venus Range Precision Tweezers

- Manufactured from high grade anti-acid, anti-magnetic stainless steel



238-6249 Strong thick VEN No.00

238-6176 Fine VEN No.OC9

238-6182 Extra fine VEN No.4A

238-6198 Short fine VEN No.3C

238-6233 Narrow fine VEN No.SS

238-6255 Flat round VEN No.2A

238-6283 Strong standard VEN No.1

Metric Thread Repair Kit

- Repairs stripped or damaged internal threads
- Different kits available to repairs threads from M2.5 to M10
- No engineering experience needed
- Protects tapped threads against wear and tear



917-2482	M4-M10 5 piece
917-2491	M5-M12 5 piece
917-2494	M2.5-M6 5 piece
917-2498	M3
917-2501	M16
917-2505	M6
917-2508	M4
917-2511	M8
917-2514	M5
917-2517	M2.5
917-2520	M12
917-2523	M10

Metric Die Set

- High quality high speed steel ISO dies
- Set contents: M3, M4, M5, M6, M8, M10, M12 dies and die-cast die holder



668-0775	8 Piece Die Set, M3 - M12 Dies
----------	--------------------------------

Hss M2 Grade Dies

- Precision engineered, split form dies made to BS1127:1924 for machine or manual operation



215-596	M6x1.0mm
215-603	M8x1.25mm
215-653	M2x0.4mm
215-619	M10x1.5mm
215-625	M12x1.75mm
215-647	M5x0.8mm
215-669	M2.5x0.45mm
215-710	M10x1.0mm
215-726	M10x1.25mm
215-732	M12x1.0mm
215-748	M12x1.25mm
215-754	M12x1.5mm
215-811	M8x1.0mm

Hss Rethreader

- Use with switchboxes and faceplates
- For cleaning out and cutting damaged threads



125-3090	M3.5x0.6
125-3091	M4.0x0.7

Die Nut Set

- Carbon steel die nuts to DIN standard
- Supplied in a wooden box



300-7515	5 piece metric M5-M12
300-7521	5 piece UNF 1/4in-1/2in
300-7537	5 piece UNC 1/4in-1/2in
506-4318	7 piece metric M3-M12

Hss Die Nuts

- Manufactured to BS1127; 1950 standard
- Ideal for use in areas where access is limited



424-239	M4 0.7mm
424-213	M10 1.5mm
424-217	M12 1.75mm
424-223	M8 1.25mm
424-229	M6 1.0mm
424-235	M5 0.8mm

Metric Dies Left Hand Thread

- High quality, High Speed Steel dies
- Metric coarse thread
- Polypropylene storage case



668-0753	M4x0.7mm
668-0750	M6x1.0mm
668-0766	M12x1.75mm
668-0769	M8x1.25mm

Spiral Point Tap Set

- 7 Piece set contains M3-M12 sizes
- Manufactured from high-speed steel (HSS), ensuring excellent durability
- Suitable for hand and machine application
- Durable metal storage case



427-963	7 tap set: M3, M4, M5, M6, M8, M10, M12
668-1122	44 Piece M3-M12 HSS
506-4267	18 Piece M3-M10 HSS
668-1138	32 Piece M3-M12 Carbon Steel
668-1129	54 Piece M3-M20 HSS

Metric Tap Set

- For hand use or with variable speed power tools with forward/reverse action
- Set contains one of each M3, M4, M5, M6, M8 and M10 taps



828-117	Tap only
248-5560	Tap and drill set
375-9323	Straight flute taps with die-cast tap wrench
	Contains: taps in M3, M4, M5, M6, M8, M10 and M12 sizes

Hss Hand Tap & Drill Sets

- High Speed Steel taps to tolerance class of tap: 6H M3-M12
- 14 Piece sets include 7 taps & 7 drills
- 29 Piece set includes 2nd & bottom tap, drills and tape wrench



917-2599	29 Piece set
917-2602	14 Piece straight set
917-2609	14 Piece spiral set

Workshop Range Tap & Die Sets

- HSS set with bar type wrench and ratchet wrench for small tap size
- Metal storage cases with hardwood partition trays



300-7442	M6-M12
300-7464	1/4-1/2 UNC
300-7470	1/4-3/4 UNC
300-7509	1/4-3/4 UNF
300-7458	M6-M20

Die Stock

- Chemically blackened finish
- Chromed handles



444-885	1 5/16 inch
444-895	1 inch
300-7363	25mm
359-6677	13/16 inch

Hss Metric Taps Left Hand Thread

- High quality High Speed Steel taps
- Metric coarse series thread
- Straight flute
- Set of 3 taper, second and plug tap
- Supplied in a polypropylene storage case



668-1078	M6
668-1071	M4
668-1084	M12
668-1087	M8

Hss Pipe Thread Tap

- PG DIN40432 thread
- Plain shank



917-2606	PG21x16tpi
917-2615	PG29x16tpi

Iso Metric Coarse Tap Set

- Set of 3 contains taper, second and plug tap
- Supplied in polypropylene case



215-530	M6x1.0
215-574	M5x0.8
215-524	M12x1.75
215-546	M10x1.5
215-568	M8x1.25
215-580	M4x0.7



RS PRO products are audited against demanding international standards, inspected for durability and consistency and tested by leading engineers.

Only when products have been through this process they are awarded our seal of approval, demonstrating quality that can be trusted. Confidence in this process is reflected in our long product warranties - proof that our products will consistently deliver the quality you expect for a long time to come.

