

**FLUKE®**

END OF FINANCIAL YEAR

**UPGRADE**

13 MAY - 30 JUNE 2024

**FREE GIFT WITH PURCHASE**

**Fluke TiS60+ / Ti300+ / Ti401 PRO / Ti480 PRO / TiX501 / TiX580 Thermal Imagers**

**Built for the toughest industrial environments.**

- Ensure precise focus effortlessly with LaserSharp® Auto-Focus delivering instant, accurate thermal images with just the push of a button
- Professionally create and analyse reports using your captured images with free reporting software



**Performance Series**

**Fluke TiS60+ Thermal Imager**

Ideal for technicians and contractors working on electrical, HVAC/R, residential and light commercial inspections.



**Professional Series**

**Fluke Ti300+, Ti401 PRO, Ti480 PRO Thermal Imager**

Tailored for professional thermographers needing advanced features and specifications for industrial, heavy commercial, mechanical and facilities maintenance, and heavy building diagnostics.



**Expert Series**

**Fluke TiX501 & TiX580 Thermal Imagers**

Designed for engineers, R&D professionals, and advanced thermographers with demanding applications including advanced industrial, heavy commercial, mining, oil and gas, and utility inspections.



|  | TiS60+                              | Ti300+                 | Ti401 PRO      | Ti480 PRO        | TiX501                              | TiX580            |
|--|-------------------------------------|------------------------|----------------|------------------|-------------------------------------|-------------------|
| Infrared Resolution                          | 320 × 240                           | 320 × 240              | 640 × 480      | 640 × 480        | 640 × 480                           | 640 × 480         |
| SuperResolution                              | -                                   | -                      | -              | -                | -                                   | Yes (in software) |
| Temperature Range                            | -20°C to 400°C                      | -20°C to 650°C         | -20°C to 650°C | -20°C to 1,200°C | -20°C to 650°C                      | -20°C to 1,000°C  |
| Focusing Technology                          | Fixed Focus                         | LaserSharp™ Auto Focus |                |                  | LaserSharp™ & Advanced Manual Focus |                   |
| IFOV with Standard Lens (spatial resolution) | 1.86 mrad                           | 1.85 mrad              | 0.93 mrad      | 0.93 mrad        | 0.93 mrad                           | 0.93 mrad         |
| Thermal Sensitivity                          | 45mK                                | 75mK                   | 75mK           | 50mK             | 50mK                                | 50mK              |
| Minimum Focus Distance                       | 46 cm                               | 15 cm                  | 15 cm          | 15 cm            | 15 cm                               | 15 cm             |
| Software                                     | Fluke Connect™ & SmartView® Classic |                        |                |                  |                                     |                   |



Scan QR code for more info  
[fluke.co/eofyu24](https://fluke.co/eofyu24)

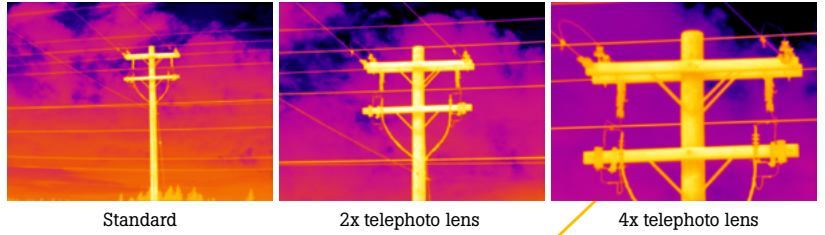
**More Offers** ➔

# Fluke Infrared Lenses

## SEE the impossible.

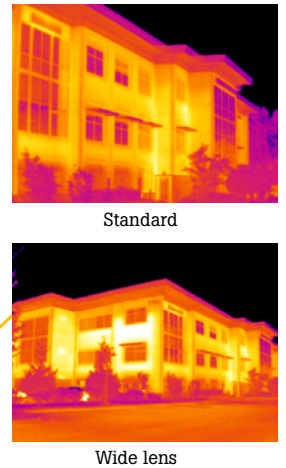
### Telephoto Lenses

The difference between finding and potentially diagnosing the problem, and not seeing any discrepancy at all. Get the detail you need, even from a distance, when you view your target magnified 2 or 4 times more than a standard lens.



### Wide Angle Lenses

When working in a tight space, see a larger target from a close distance. Ideal for roof and building inspection or for looking through IR Windows.



**BUY a Fluke TiS60+ Infrared Camera**  
**Receive FREE:**

Fluke 376 FC True-RMS Clamp Meter



**Valued at \$1,221.00**

**BUY a Fluke Ti300+ Infrared Camera**  
**Receive FREE:**

Fluke 378 FC Non-Contact Voltage Clamp Meter with iFlex®



**Valued at \$1,766.00**

**BUY a Fluke Ti401 PRO OR Ti480 PRO OR TiX501 OR TiX580 Infrared Camera**  
**Receive FREE:**

Fluke Lens/Wide2  
OR Fluke Lens/Tele2



OR



**Valued up to \$3,358.00**



END OF FINANCIAL YEAR

**UPGRADE**

**13 May to 30 June 2024**

# Fluke Power Quality Analysers

## Fluke 1770 Series Power Quality Analyser

Effortless power quality analysis. Capture transients, harmonics, voltage, current, and power measurements to optimise your electrical system.

- Measure up to 6000 A AC and 2000 A DC
- Automated connection verification
- Full IEC61000-4-30 Class A compliance



|   | 1773 | 1775  | 1777   |
|---|------|-------|--------|
| Energy studies                              | •    | •     | •      |
| Basic harmonics study                       | •    | •     | •      |
| Full harmonic spectrum                      | •    | •     | •      |
| Oscilloscope function                       | •    | •     | •      |
| 8kV transients                              |      | 1 MHz | 20 MHz |
| Event capture and transients with waveforms |      | •     | •      |



**Buy a Fluke 1773, 1775, 1777 Power Quality Analyser**  
**Receive FREE:**

Fluke 374 FC Clamp Meter **AND**  
 Fluke TC01A **OR** TC01B iSee™ Mobile Thermal Camera

**Valued up to \$1,530.00**



**AND**



TC01A (Android)

**OR**



TC01B (iOS)

## Fluke Portable Calibration

### Fluke 754 Documenting Process Calibrator

One tool, countless solutions. The Fluke 754 is your trusted companion for faster calibration, maintenance, and troubleshooting.

- Automatic pressure generation and regulation to 1000 psi
- Automatic internal fine-pressure adjustment



**BUY a Fluke 754 Process Calibrator**  
**Receive FREE:**

Fluke 700G Pressure Gauge **OR** Fluke 750P Pressure Module

**Valued up to \$7,082.00**



**OR**



Visit [fluke.co/eofyu24](https://www.fluke.co/eofyu24) or scan the QR code for more information.



# Fluke Mechanical Maintenance



## Fluke 810 Vibration Tester

Experience quick and precise machine diagnostics and receive expert repair guidance with the Fluke 810 Vibration Tester.

- Easily determine the root cause, location and severity of common mechanical faults, including bearings, misalignment, unbalance and looseness
- Repair recommendations advise technicians on corrective action

## Fluke 831 Laser Shaft Alignment Tool

Say goodbye to the thousands lost in replacement bearing costs and unexpected downtime. Reclaim control of your shaft-driven systems with the Fluke 831 Laser Shaft Alignment Tool.

- Better data accuracy with single-laser measurement technology
- Intuitive guided user interface for quick, easy machine alignment



**BUY a Fluke 810 Vibration Tester OR  
Fluke 831 Laser Shaft Alignment Tool  
Receive FREE:**

Fluke 802 EN Vibration Meter

**Valued at \$2,016.00**



## How to redeem your FREE bonus:

- ① Purchase an eligible Fluke test tool in this promotion between **13 May and 30 June 2024**.
- ② Visit ➔ [fluke.co/eofyu24](https://www.fluke.co/eofyu24) or scan the QR code to redeem.



END OF FINANCIAL YEAR

**UPGRADE**

Sponsored by Fluke Australia Pty Ltd. All prices are Fluke Australia's recommended trade price unless specified otherwise. Final pricing is at the discretion of the participating authorised Fluke Australia distributor or wholesaler. Customers purchasing via a wholesaler branch need to ensure the select branch is purchasing Fluke equipment from a Fluke Australia authorised distributor, a full list of which can be found here: [www.fluke.com/au/wtb](https://www.fluke.com/au/wtb) to be valid to redeem within this promotion. Offers are available to customers only. Distributors and/or branches cannot redeem the free items. All redemptions will be checked and verified by Fluke Australia. Fluke rewards can be redeemed online only at: [fluke.co/eofyu24](https://www.fluke.co/eofyu24) with a valid proof of purchase. Offers are valid for purchases made between 13 May 2024 and 30 June 2024 or until stocks last. Offers cannot be combined with any other discounts, promotions or other special offers. Please allow 6-12 weeks for delivery of redeemed items. Offers available to Australian residents only.