



rspro.com

PLANNED MAINTENANCE

RANGE GUIDE



PLANNED MAINTENANCE - WORKING ENVIRONMENTS	3
PRODUCTION LINE	4
AVAILABLE RANGE	4
RELATED PRODUCTS	5
WAREHOUSE	6
AVAILABLE RANGE	6
RELATED PRODUCTS	7



PRODUCTION LINE



WAREHOUSE





Proximity Sensors



HMI Displays



Pressure Sensors



Inverter Drives



Photoelectric Sensors



DIN Rail Power Supplies



Relays



Sensor & Actuator Cables



Industrial Circular Connectors



Heavy Duty Power Connectors



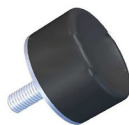
Multi Function Panel Meters



MCBs



Sounder Beacons



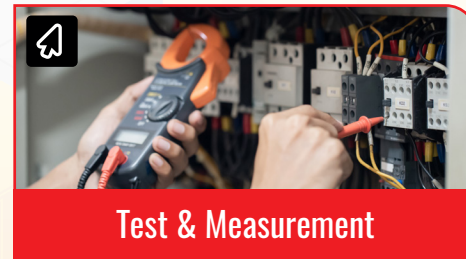
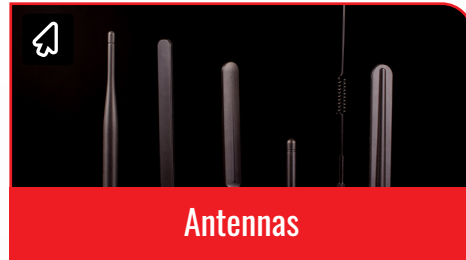
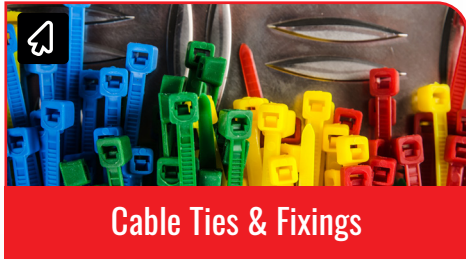
Anti Vibration



Temperature Controllers



Time Switches





Electrical Power & Industrial Cables



Emergency Stop Push Buttons



Axial Fans



Hook Up Wire



Enclosures



Push Button Switches



Signalling



Oil Particulate Analysers



Tool Boxes



Temperature Measurement



Vibration Meters



Safety Barriers



Work Gloves



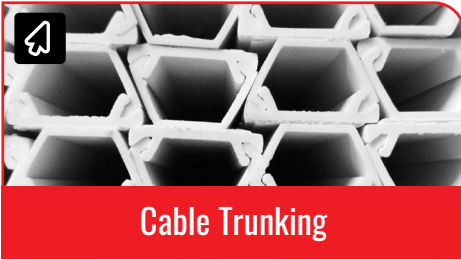
Clips & Springs



Disposable Gloves



First Aid Kits



Cable Trunking



Wire Terminals & Splices



Cable Glands & Fittings



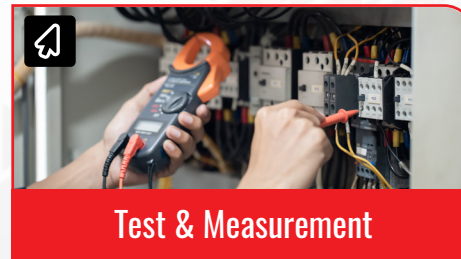
Mains & DC Power Connectors



Cable Markers



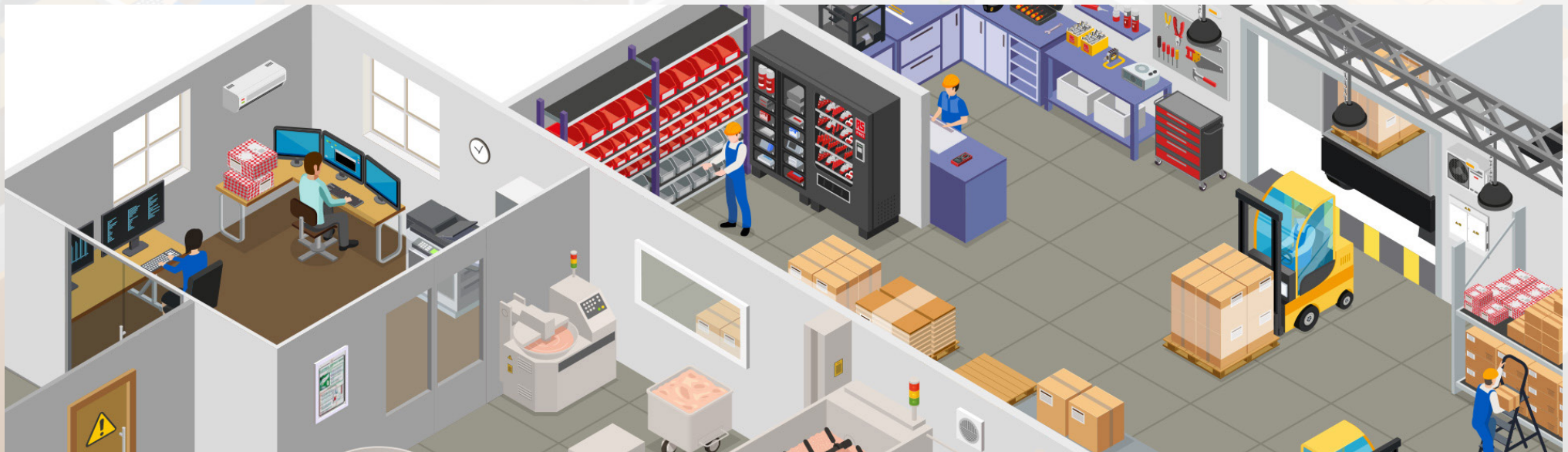
Fasteners & Fixings



Test & Measurement



Hand tools



RS PRO products are audited against demanding international standards, inspected for durability and consistency and tested by leading engineers.

Only when products have been through this process they are awarded our seal of approval, quality that can be trusted. Confidence in this process is reflected in our long product warranties, proof that our products will consistently deliver the quality you expect for a long time to come.

