

# ELECTRONICS DESIGNED FOR YOU

**Giving you extra value,  
across the board**

[th.rs-online.com](http://th.rs-online.com)





## CONTENTS

4	Development Tools
10	Microcontrollers/Memory
11	Analog
12	Analog/Discretes
13	Discretes
14	Discretes/Optoelectronics
15	Optoelectronics
19	Passives Components
20	Passive Components/Sensing
21	Sensing
22	Sensing/ Wireless Comms
24	Timing/Switches and Relays
25	Switches and Relays / Cable & Connectors
26	Cable and Connectors
30	Cable and Connectors / Electromechanical
31	Displays
32	3D Printing
34	Soldering
36	ESD Control
40	Tools

To view our latest prices, charges and full terms see RS Conditions of Sale as set out online at [th.rs-online.com](http://th.rs-online.com).

Published by: RS Components Co., Ltd. (Head Office)  
50 GMM Grammy Place, 19th Floor, Unit 1901-1904, Sukhumvit 21  
Road (Asoke), Klongtoey Nua, Wattana, Bangkok, Thailand 10110.

RS are trademarks of RS Components Limited. An RS Group PLC Company.

## Technology never stands still, infact it's moving at its quickest pace in nearly a century

With the development and evolution of medical devices, contact-free solutions, communications, EVs, wireless connectivity, cloud-based tools, IoT – to name a few! All products and innovations improving our lives and the way we do business.

We too know a thing or two about electronics and have been proud to support our ever-growing electronics community for over 80 years. As your partner, we'll help you source the products, design tools and solutions to get the job done – with access to over 700 electronics manufacturers and 250,000 electronic products, all in one place.

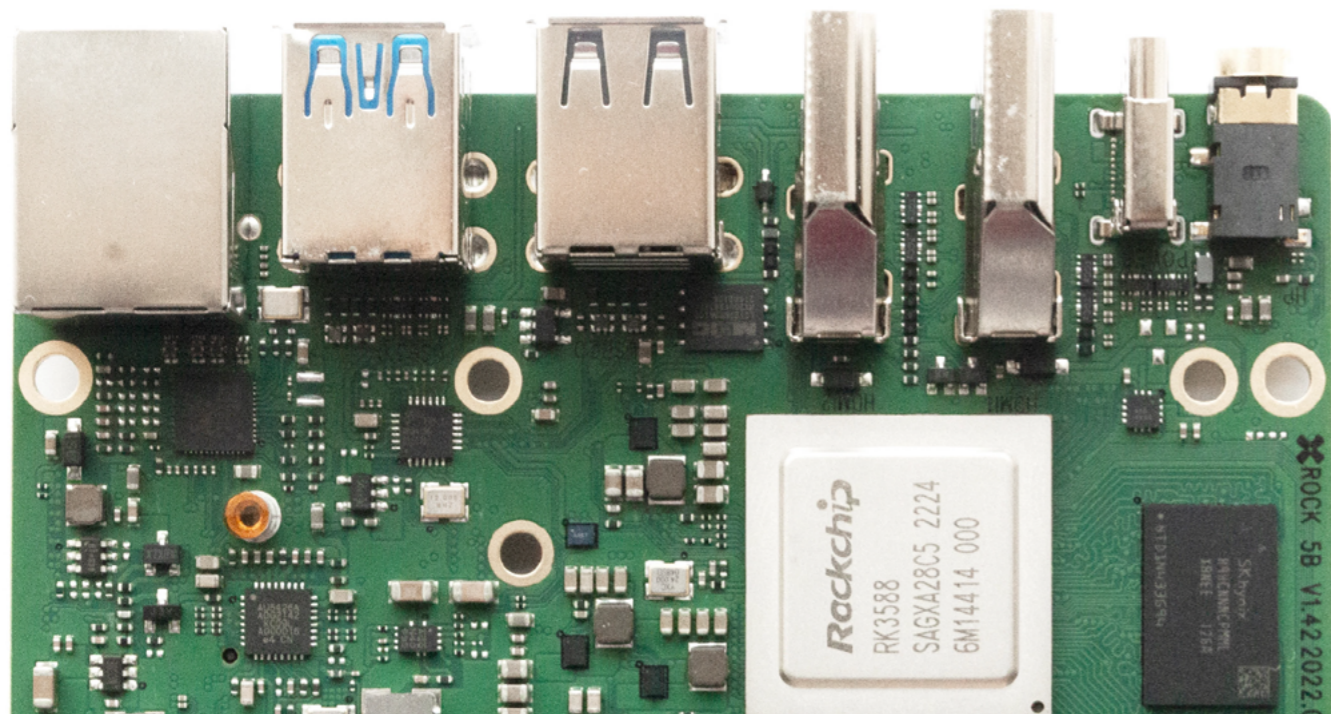
This brochure highlights just a selection of our range of electronic components, development and prototyping tools from many trusted brands such as TE Connectivity, Amphenol, Molex, Infineon, ST, Microchip, Renesas, ams OSRAM, SEGGER, Würth Elektronik and ebm-papst.

And why not take a look at our DesignSpark community, which connects over a million like-minded engineers from all walks of life, using our design resources to improve productivity and innovate responsibly. You'll find plenty to give you inspiration including programming software, CAD libraries and tech updates to help fire up the ordinary and ignite the extraordinary.

**We're confident you'll find everything you need when it comes to electronics – we're here to support you.**

# ROCK

Exclusively curated for engineers and professionals at the forefront of technology. Unleash the true power of computing with ROCK SBCs. Crafted with meticulous attention to detail, ROCK's Single Board Computers (SBCs) are tailored to meet the demands of discerning engineers and professionals. Discover unparalleled performance, enhanced connectivity, and robust multimedia capabilities, making ROCK the ideal choice for advanced industrial applications, edge computing projects, and high-complexity automation systems. Elevate your engineering endeavors and stay ahead in your field with ROCK's exceptional SBC solutions, setting new standards for efficiency and innovation.



## ROCK 5A

- Introducing the latest addition to our next-gen ROCK 5 series, the OKdo ROCK 5A Model A 16GB Single Board Computer.
- Powered by the reliable Rockchip RK3588S SoC, this SBC offers exceptional performance for a wide range of projects.
- The octa-core processor features a quad Cortex A76 @ 2.2-2.4GHz and a quad Cortex A55 @ 1.8GHz CPU, along with an Arm Mali™ G610MC4 GPU, providing reliable processing power.



8GB

257-3562 8 GB  
257-3560 16 GB

## ROCK 4C+

- A powerful and feature-packed SBC built around the formidable Rockchip RK3399-T SoC. Arm® big.LITTLE™ dual Arm Cortex® A72, quad Cortex-A53 CPU, & Arm Mali™ T860MP4 GPU. 4GB 64-bit RAM & an eMMC socket, it ensures efficient data handling. Power on/off button, external antenna, & audio jack for enhanced usability. Dual micro-HDMI up to 4Kp60 resolution, Bluetooth 5.0, Gigabit Ethernet, & Wireless LAN.



4GB

249-3158 ROCK 4 Model C+ 4GB SBC only  
250-2784 ROCK 4 Model C+ 4GB SBC only, 100 pack RS114CP-D4-BULK  
230-6199 Starter kit includes: ROCK 4 Model C+ 4GB single board computer, 5V/3A Universal Power supply, USB to USB-C cable with in-line switch, 2 x 1M Micro HDMI to HDMI cables, 32GB MicroSD Card. (with preloaded Linux OS), MicroSD card to USB reader, CPU heat sink and fan, Metal enclosure, Mini screwdriver. ROCK4C+ Starter Kit

## ROCK 4SE

- Powered by the high-performing Rockchip RK3399-T processor, featuring big.LITTLE™ Arm® Dual Cortex-A72® CPU, Quad-core Cortex-A53, and Arm Mali™ - T860MP4 GPU.
- 4GB 64bit LPDDR4 RAM and expandable with an eMMC module or SSD through an m.2 connector.
- Boasting onboard RTC, WiFi, Bluetooth, Audio jack (headphone and headset), and a 4K HDMI port for seamless connectivity experiences.



4GB

220-9536 4 GB

## ROCK 3A

- The ROCK 3A is packed with features, including Quad core Armv8.2-A Cortex®-A55 CPU, Arm Mali™ G52 GPU, HDMI 2.0 port supporting displays up to 4K@60fps resolution, multiple connectivity and storage possibilities.

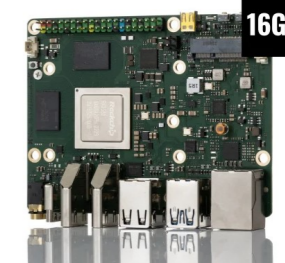


2GB

256-3910

## ROCK 5B

- Reliable hardware - robust performance based on the Rockchip RK3588 SoC, Arm DynamIQ Quad Cortex - A76 @ 2.2/2.4GHz, Quad Cortex - A55 @ 1.8GHz CPU, Arm Mali - G610MC4 GPU and 16GB 64bit LPDDR4 RAM.
- Incredible 8K display support - the Arm Mali G610MC4 graphics processing unit (GPU) allows the ROCK 5B to support the most advanced multimedia applications, including games, videos, and signage, supporting dual displays up to 8Kp60 and 4Kp60 resolution.



16GB

256-3914

## ROCK CM3

- The ROCK 3 Compute Module (CM3) is a System on Module (SoM) based on a powerful Rockchip RK3566 System on Chip (SoC), Quad-core Arm® Cortex®-A55 CPU and Arm Mali™-G52-2EE GPU. This CM3 is designed to increase the performance and capabilities of your design applications.
- With a 2GB LPDDR4 RAM, and many other class-leading features incorporated in this compact board of just 55mm x 40mm, the ROCK 3 Compute Module can be easily integrated into different industrial and multimedia projects.



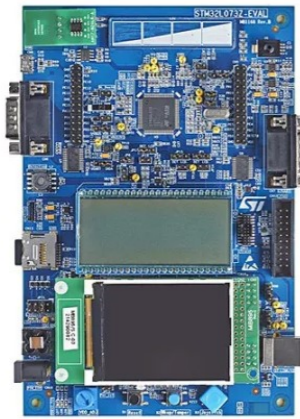
2GB

256-5016 Compute Module (CM3) 2GB



**STMicroelectronics MCU Evaluation Board STM32L073Z-EVAL**

- Four 5 V power supply options through the power jack, ST-LINK USB connector, user USB FS connector or a daughter board
- Microcontroller voltage selectable: 3.3 V or adjustable from 1.71 V to 3.6 V
- Micro SD card interface
- RF-EEPROM on I<sup>2</sup>C interface



106-5397 STM32L073Z-EVAL

**Renesas Electronics Buck Regulator**

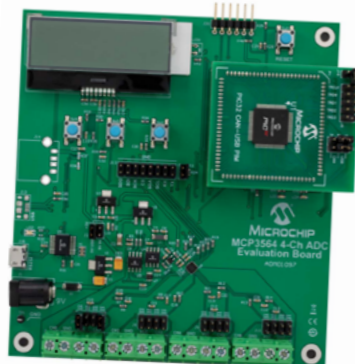
- Switch selectable EN (enabled/disabled)
- Selectable mode (DEM/Forced CCM) (ISL85005DEMO1Z)
- Internal and external compensation options
- Frequency synchronization option (ISL85005DEMO1Z)
- Adjustable soft-start option (ISL85005AEMO1Z)
- Small and compact design



135-7893 ISL85005DEMO1Z

**MCP3564 ADC Evaluation Board V2 for PIC32 MCUs**

- Provides a development platform for 32-bit PIC device based applications, using existing 100-pin PIC microcontroller Plug-in Module (PIM) systems that are compatible with the Explorer 16 and other high-pin count PIC32 device-based demo boards
- Offers integrated features such as internal oscillator, temperature sensor and burnout sensor detection
- Fully configurable with Oversampling Ratio (OSR) from 32 to 98304 and gain from 1/3X to 64X
- Comes with a 20 MHz SPI-compatible serial interface



204-2688 ADM01097

**Digilent BASYS 3™ FPGA Development Board**

- Comprehensive, ready-to-use digital circuit development platform based on the latest Artix-7 Field Programmable Gate Array (FPGA) from Xilinx



134-6451

**Renesas Electronics Buck Regulator**

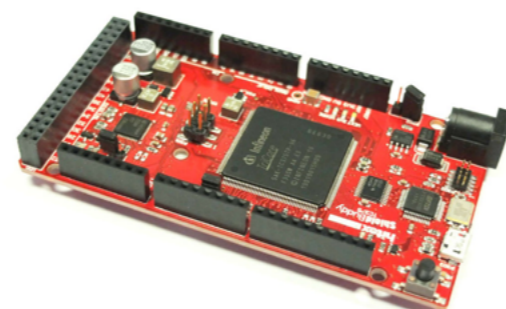
- Switch selectable EN (enabled/disabled)
- Jumper selectable MODE (DEM/Forced CCM) (ISL85005EVAL1Z)
- Internal and external compensation options
- Frequency synchronization option (ISL85005EVAL1Z)
- Adjustable soft-start option (ISL85005AEVAL1Z)
- Connectors and test points for easy probing



135-7895 ISL85005EVAL1Z

**AURIX™ TC275 ShieldBuddyTC375**

- Fitted with AURIX™ TC375 32-bit multicore processor on a board following the Arduino™ standard making it compatible with many of the application shields that are available
- Direct USB debug interface
- Allows instant access for new and prospective AURIX users to hundreds of shields

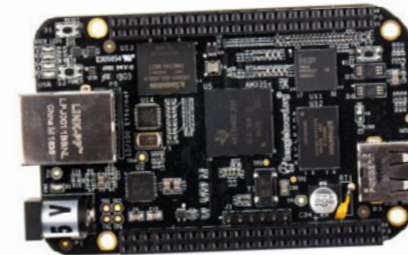


213-3243 KITA2GTC375ARDSBTOBO1



**BeagleBone Black Rev C SBC**

- Introducing the Rev C open-source development board, featuring a potent ARM Cortex-A8 and ARM Cortex-M3.
- Affordable, community-supported platform suits developers and hobbyists alike.
- Preloaded with Debian Linux, it enables quick booting in 10 seconds.
- Get started in just 5 minutes with a single USB cable, whether for standalone or embedded system projects.



125-2411 Beaglebone Black board

**Würth Elektronik Development Kit Horticulture LEDs**

- With Magi<sup>2</sup>C power module 172 946 001. The intensity of each channel can be adjusted individually (dimming 0 - 100%)
- APP "WEilluminate" to perform dimming. PWM dimming method - controlled by PIC16F1527 microcontroller. Dimming profiles and colours can be stored
- Horticulture LED panel for plant grow with Deep Blue, Hyper Red, Far Red and up to 30umol/s output
- Conducted and radiated EMI compliant (EN55015), with good thermal behaviour



WÜRTH ELEKTRONIK MORE THAN YOU EXPECT



210-8068 150001

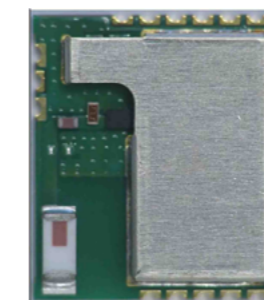
**STWIN SensorTile Wireless Industrial Node Development Kit**

- The STEVAL-STWINK1B SensorTile wireless industrial node is a development kit and reference design that simplifies prototyping and testing of advanced industrial IoT applications such as condition monitoring and predictive maintenance
- Multi-sensing wireless platform implementing vibration monitoring and ultrasound detection
- Updated version of STEVAL-STWINK1, now including STSAFE-A110 populated, BlueNRG-M2S module and IMP23ABSU MEMS microphone
- Built around STWIN core system board with processing, sensing, connectivity and expansion capabilities
- Ultra-low-power ARM Cortex-M4 MCU at 120 MHz with FPU, 2048 kbytes Flash memory (STM32L4R9)



201-0404 IIS3DWBTR

210-2301 STEVAL-STWINK1B



**Coral M.2 Accelerator with Dual Edge TPU**

- M.2 module (E-key) that includes two Edge TPU ML accelerators, each with their own PCIe Gen2 x1 interface. The Edge TPU is a small ASIC designed by Google that accelerates Tensor Flow Lite models in a power efficient manner.
- Integrated power management
- Include two Google Edge TPU ML accelerators
- Its operating temperature range is from -40 to +85°C



**Coral**

213-3255 8 bit Module

**K...H Series High Operating Temperature Multilayer Ceramic Capacitors Kit**

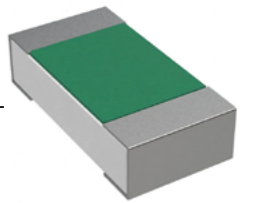
- This sample kit offers 24 different radial MLCC capacitors that differ in dielectric, capacitance value and voltage, with 10 of each variety supplied
- AEC-Q200 qualified (PPAP available)
- High reliability, high performance
- Radial mounting style
- Designed for application in the most extreme operating conditions
- Unmatched maximum operating temperature of +175°C for ceramic dielectrics



122-0708

**SG73P Endured Pulse Power Flat Chip Resistors**

- Superior to RK73 series chip resistors in pulse withstanding voltage and high power
- Resistance tolerance is available from ±0.5%
- Suitable for both reflow and flow soldering
- Products with lead free termination meet EU-RoH requirements AEC-Q200 Tested



241-0646

**EMI Suppression Axial Ferrite Bead Kit**

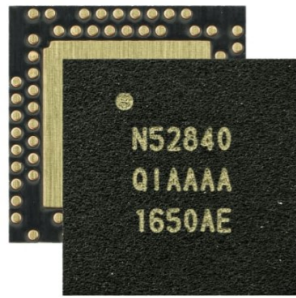
- WE-CBF HF series is available in 3 types
- Modified internal layout increases the effective suppression range
- The impedance at 1GHz is at least 3 times higher than WE-CBF product family
- Operating temperature: -55°C to +125°C
- Ideal for suppression in signal lines in the high frequency range e.g. fast data lines in CPU, high speed bus systems and HDD



862-4982

### Nordic NRF52840 System on Chip, Dongle and Development Kit

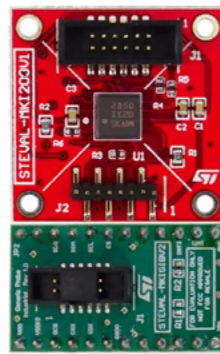
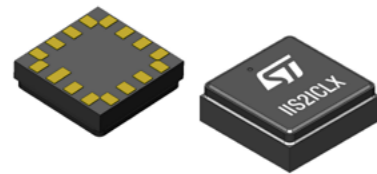
- The NRF52840 is fully multiprotocol capable with full protocol concurrency.
- It has protocol support for Bluetooth LE, Bluetooth mesh, Thread, Zigbee, 802.15.4, ANT and 2.4 GHz proprietary stacks.
- The NRF52840 is built around the 32-bit ARM® Cortex™-M4 CPU with floating point unit running at 64 MHz.
- It has NFC-A Tag for use in simplified pairing and payment solutions.



180-9081 NRF52840-Q1AA-R

### STEVAL-MKI209V1K MEMS Inclinometer Evaluation Board

- The STEVAL-MKI209V1K evaluation board has an embedded IIS2ICLX inclinometer sensor, which is connected through flat cable to a simple adapter board (STEVAL-MKIG1BV2) to render it compatible with STEVAL-MKI109V3
- User friendly IIS2ICLX board
- Complete IIS2ICLX pinout for a standard DIL 24 socket
- Double-sided adhesives included for easy mounting on equipment to be measured
- Fully compatible with and STEVAL-MKI109V3 motherboard
- RoHS compliant



life.augmentec

204-9946 IIS2ICLXTR

206-6092 STEVAL-MKI209V1K

### Lattice USB Flywire Cable

- Support for all Lattice programmable products
- 1.2 V to 3.3 V programming (HW-USBN-2B)
- 1.2 V to 5 V programming (All other cables)
- Ideal for design prototyping and debugging
- Connect to multiple PC interfaces
- USB (v.1.0, v.2.0)
- PC Parallel Port
- Easy-to-use programming connectors
- Versatile flywire, 2 x 5 (.100") or 1 x 8 (.100") connectors
- 6 feet (2 meters) or more of programming cable length (PC to DUT)



363-3526 HW-USBN-2B

### Broadcom Spectrometers

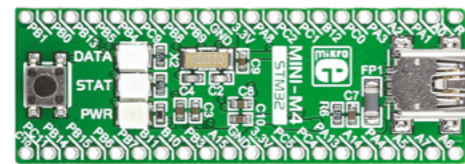
- The matchbox sized spectrometers are designed for industrial integration, performing measurements between 190 nm and 1700 nm.
- High optical performance in a rugged housing offers reliable measurement in industrial surroundings
- Sophisticated electronics, with USB, SPI and UART as serial interfaces
- Free Software and SDK ensure fast response times for real-time analytics
- Applications include: Process Control and Monitoring, Material and Polymer Analysis, Color Measurements, Environmental Monitoring
- Authentication and Anti-Counterfeiting, Light Measurements, Quality Control and Water Quality Analysis



229-9750 AFBR-S20W2V1 Qwave NIR – 700 to 1030 nm

### MINI-M4™ development board for STM32

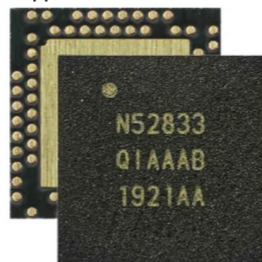
- The whole STM32 development board fitted in DIP40 form factor, containing powerful STM32F415RG microcontroller.



820-9870 MIKROE-1367

### Nordic NRF52833 System on Chip and Development Kit

- The NRF52833 is a general-purpose multiprotocol SoC with a Bluetooth Direction Finding capable radio, qualified for operation at an extended temperature range of -40°C to 105°C. It is the 5th addition to the industry leading nRF52 Series and is built around a 64 MHz Arm Cortex-M4 with FPU, and has 512 KB flash and 128 KB RAM memory available for higher value applications.



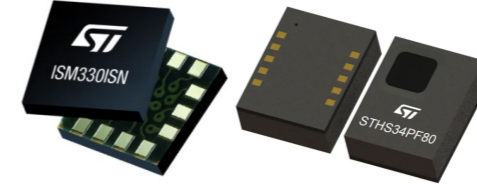
194-6360 nRF52833-Q1AA-R7

### Programmable wireless box kit for IoT applications

- The STEVAL-MKBOXPRO (SensorTile.box PRO) is the new ready-to-use programmable wireless box kit for developing any IoT application
- Based on remote data gathering and evaluation
- Leverage both motion and environmental data sensing and a digital microphone
- Enhance the connectivity and smartness of any environment



life.augmentec



This image is representative of the product range

261-4773 ISM330ISNT

261-4180 LSM6DSO16IST

261-4393 STHS34PF80T

### Chip Programmers

- Chip programmers known as device programmers or IC programmers are items of electronic equipment that arrange written software to configure programmable devices.
- They support a broad range of chip sets such as EPROMs, EEPROMs and flash, ROMs, GALs and microcontrollers.
- In the case of EPROMs, once they have been programmed, they can be erased with the use of an EPROM UV eraser.



775-4684 48Pro2C

707-9870 DATAMAN-48PRO2

772-3069 FLASHBIOSBOX

772-3078 PRESTO

### SEGGER J-LINK

- SEGGER J-Links are the most widely used line of debug probes on the market.
- They have provided solid value to embedded development for over a decade.
- Unparalleled performance, an extensive feature set, many supported CPUs and compatibility with popular environments all make J-Link an unbeatable choice.



131-1319 8.08.00 J-LINK BASE

131-1320 8.08.28 J-LINK PLUS

131-1322 8.12.00 J-LINK PRO

131-1321 8.16.28 J-LINK ULTRA+

### USB Debug Adapter For C8051FXXX MCU

- The 8-bit USB Debug Adapter (UDA) provides the interface between the PC's USB port and the Silicon Labs 8-bit target device's in-system debug/programming circuitry.
- The 10-pin ribbon cable connects the adapter to the target board and the target device's debug interface.



757-0297 DEBUGDPTR1-USB

### Intel FPGA Download Cable

- The Intel® FPGA Download Cable interfaces a USB port on a host computer to an FPGA mounted on a printed circuit board. The cable sends configuration data from the host computer to a standard 10-pin header connected to the FPGA. You can use the Intel FPGA Download Cable to iteratively download configuration data to a system during prototyping or to program data into the system during production.



690-4093 PL-USB-BLASTER-RCN

### Microchip PIC18-Q41 MCU

- PIC18-Q41 is a compact, high performance PIC18 product family with advanced analog peripherals for sensor and real-time control applications .
- The products are equipped with an on-chip operational amplifier, 12-bit ADC with Computation and two 8-bit DACs for improved data acquisition and sensor interfacing capabilities.
- Other key features include 16-bit PWMs, Direct Memory Access, Configurable Logic Cells and multiple communication interfaces.



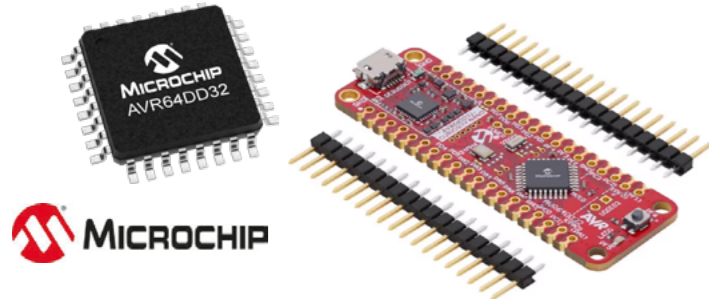
274-4263 PIC18F15Q41-I/P

274-4265 PIC18F15Q41-I/REB

274-4267 PIC18F16Q41-I/REB

**Microchip AVR® DD family of microcontrollers**

- The AVR® DD family of microcontrollers feature the well-known AVR® CPU, now running at up to 24 MHz across the full supply voltage range of 1.8V to 5.5V.
- The family includes 16 KB, 32 KB, and 64 KB Flash variants in 14 to 32-pin package options. The AVR DD family is designed to bring real-time control and multi-voltage operation to applications including industrial control, home appliance products, automotive, and Internet of Things (IoT).



**273-0340** AVR64DD32-E/PT

**Alliance Memory SRAM**

- The AS6C1008 is well designed for very low power system applications, and particularly well suited for battery back-up non-volatile memory application.
- The AS6C62256 is a 262,144-bit low power CMOS static random access memory organized as 32,768 words by 8 bits.
- The AS6C62256 operates with wide range power supply 2.7 · 5.5V. Package: 28-pin 600 mil PDIP



**538-154** AS6C8008-55ZIN

**Microchip Serial Memory EEPROM Memory Board for SERIAL MEMORY I2C EVALUATION KIT for USB Interface**

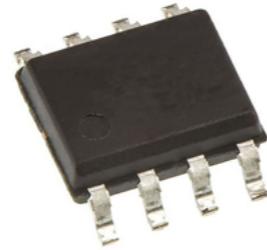
- The Microchip Serial Memory I2C Evaluation Kit (DM160237) is an easy-to-use interactive user tool that demonstrates the best-in-class features, functionality and low-power operation of Microchip I2C Serial EEPROM devices.
- The included Graphical User Interface (GUI) makes it easy for engineers and developers to configure and evaluate I2C Serial EEPROMs, shortening the overall development time needed to bring new designs from prototype to production.



**241-2220** DM160237

**Data-Logging Memory**

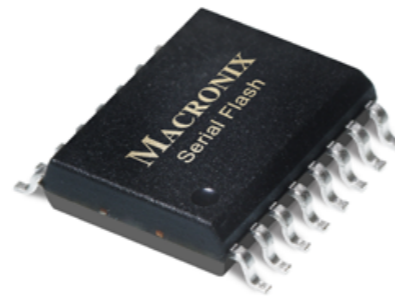
- F-RAM offers virtually unlimited endurance of 100 trillion read/write cycles
- Fast write speed
- High endurance
- Low power consumption



**124-2933** CY15B104Q-SXI  
**188-5304** CY15B104Q-SXI

**Flash Memory**

- Non-volatile memory storage.
- Can be electrically erased and programmed at byte-level retaining data regardless of a power source.



**914-0674** MX25L51245GMI-10G  
**914-2816** MX29LV160DBTI-70G

**SRAM**

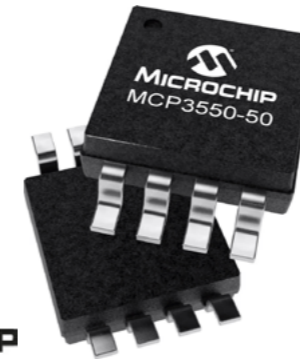
- SRAM stands for Static Random Access Memory and is a type of semiconductor memory that uses bistable latching circuitry (flip-flop) to store each bit.
- It holds data bits in its memory so long as power is being supplied. It cannot hold data if power is removed. SRAM is used where speed or low power are needed.
- It's higher density than DRAM, and less complicated structure makes it ideal to use in semiconductor memory scenarios where high capacity memory is used as seen in the working memory within computers.



**744-4542** AS6C1008-55PCN  
**744-4561** AS6C4008-55PCN  
**538-148** AS6C62256-55PCN  
**538-158** AS6C6264-55PCN  
**538-154** AS6C8008-55ZIN

**AD/DA Convertors**

- Providing high accuracy and low noise performance for applications where sensor measurements such as pressure, temperature and humidity are performed.
- With the internal oscillator and high oversampling rate, minimal external components are required for high accuracy applications.



**724-0283** MCP3550-50E/SN

**DC-DC Converter**

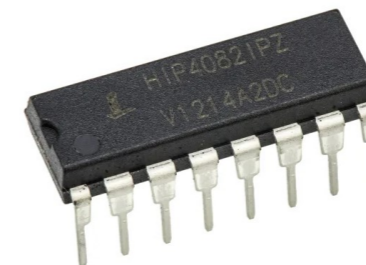
- A highly integrated, high-efficiency, fixed frequency, step-down DC-DC converter in a popular 6-pin SOT-23 package that operates from input voltage sources up to 30V.
- Integrated features include a high side switch, fixed frequency Peak Current Mode Control, internal compensation, peak current limit and overtemperature protection.
- Minimal external components are necessary to develop a complete step-down DC-DC converter power supply.



**770-9476** MCP16301T-I/CHY

**Renesas Electronics HIP4082IPZ, MOSFET 4, 1.25 A, 15V 16-Pin, PDIP**

- Independently Drives 4 N-Channel FET in Half Bridge or Full Bridge Configurations
- Bootstrap Supply Max Voltage to 95VDC
- Drives 1000pF Load in Free Air at 50°C with Rise and Fall Times of Typically 15ns
- DIS (Disable) Overrides Input Control and Refreshes Bootstrap Capacitor when Pulled Low
- Input Logic Thresholds Compatible with 5V to 15V Logic Levels



**859-391** HIP4082IPZ

**CAN Transceiver**

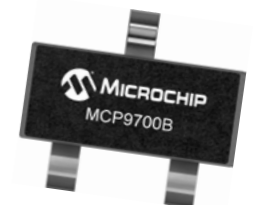
- A high-speed CAN transceiver, fault-tolerant device that serves as the interface between a CAN protocol controller and the physical bus.
- The MCP2551 provides differential transmit and receive capability for the CAN protocol controller and is fully compatible with the ISO-11898 standard, including 24V requirements. It will operate at speeds of up to 1 Mb/s.



**738-6036** MCP2551-I/SN

**High Accuracy Low-Power Linear Active Thermistor IC**

- Linear Active Thermistor ICs are sensors whose output voltage is directly proportional to measured temperature.
- The MCP9700B can accurately measure temperature from -40°C to +150°C.
- The output of the MCP9700B is calibrated to a slope of 10mV/°C and has a DC offset of 500mV.

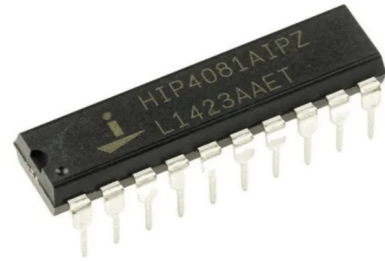


**274-4662** MCP9700BT-E/TT  
**274-4664** MCP9700BT-H/TT



**Renesas Electronics HIP4080AIPZ, MOSFET 4, 2.5 A, 15V 20-Pin, PDIP**

- Drives N-Channel FET Full Bridge Including High Side Chop Capability
- Bootstrap Supply Max Voltage to 95VDC
- Drives 1000pF Load at 1MHz in Free Air at +50°C with Rise and Fall Times of Typically 10ns
- User-Programmable Dead Time
- Charge-Pump and Bootstrap Maintain Upper Bias Supplies



**RENEASAS**  
921-5431 HIP4080AIPZ

**Renesas Electronics HIP4081AIBZ, MOSFET 4, 2.5 A, 15V 20-Pin, SOIC W**

- Independently Drives 4 N-Channel FET in Half Bridge or Full Bridge Configurations
- Bootstrap Supply Max Voltage to 95VDC
- Drives 1000pF Load at 1MHz in Free Air at 50°C with Rise Fall Times of Typically 10ns



**RENEASAS**  
216-3484 HIP4081AIBZ

**Step-Down Switching Regulator**

- A highly integrated, high-efficiency, fixed frequency, step-down DC-DC converter in a popular 6-pin SOT-23 package that operates from input voltage sources up to 50V.
- Integrated features include a high side switch, fixed frequency Peak Current Mode Control, internal compensation, peak current limit and overtemperature protection. Minimal external components are necessary to develop a complete step-down DC-DC converter power supply.

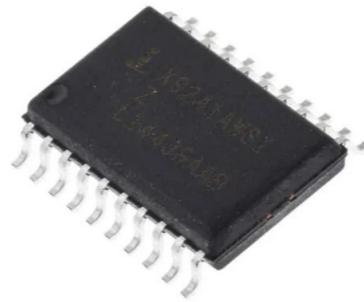


This image is representative of the product range

**MICROCHIP**  
841-7594 MCP16331T-E/CH

**Renesas Electronics HIP4080AIBZ, MOSFET 4, 2.5 A, 15V 20-Pin, SOIC W**

- Drives N-Channel FET Full Bridge Including High Side Chop Capability
- Bootstrap Supply Max Voltage to 95VDC
- Drives 1000pF Load at 1MHz in Free Air at +50°C with Rise and Fall Times of Typically 10ns



**RENEASAS**  
921-5450 HIP4080AIBZ

**Broadcom AFBR-5803ATZ Fibre Optic Transceiver**

- Full compliance with the optical performance requirements of the FDDI PMD standard
- Full compliance with the FDDI LCF-PMD standard
- Full compliance with the optical performance requirements of the ATM 100 Mb/s physical layer
- Full compliance with the optical performance requirements of 100 Base-FX version of IEEE802.3u
- Multisourced 1 x 9 package style with choice of duplex SC or duplex ST\* receptacle
- Wave solder and aqueous wash process compatible
- Single +3.3 V or +5 V power supply
- RoHS Compliance

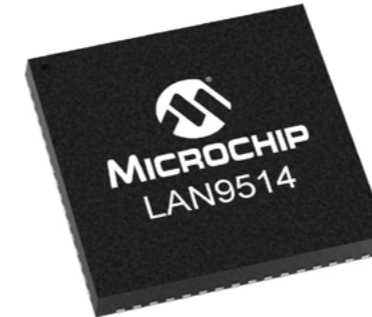


**BROADCOM**  
696-1223 100Mbit/s, 1380nm 9-Pin



**Microchip Ethernet Controller**

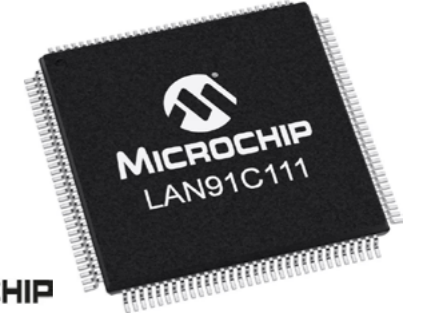
- Fully-integrated, Hi-Speed USB 2.0 hub and high-performance 10/100 Ethernet controller
- Specifically designed to provide system architects with a low-cost, power-efficient, small-footprint USB to Ethernet and multi-port USB connectivity solution in a single package.



**MICROCHIP**  
798-5248 LAN9514I-JZX

**Microchip Ethernet Controller with 16/32 Bit Interface**

- 10/100 Base-T/TX Ethernet Controller with 16/32 Bit Interface
- Designed to facilitate the implementation of a third generation of Fast Ethernet connectivity solutions for embedded applications.
- For this third generation of products, flexibility and integration dominate the design requirements.
- The LAN91C111 is a mixed signal Analog/Digital device that implements the MAC and PHY portion of the CSMA/CD protocol at 10 and 100 Mbps.



**MICROCHIP**  
672-6828 LAN91C111I-NU

**Microchip Gigabit Ethernet Transceiver**

- Gigabit Ethernet Transceiver with Power Saving Features
- The KSZ9031 is a completely integrated triple-speed (10Base-T/100Base-TX/1000Base-T) Ethernet physical-layer transceiver for transmission and reception of data on standard CAT-5 unshielded twisted pair (UTP) cable.
- The KSZ9031MNX offers the industry-standard GMII/MII (Gigabit Media Independent Interface/Media Independent Interface) for connection to GMII/MII MACs in Gigabit Ethernet processors and switches for data transfer at 1000Mbps or 10/100Mbps.



**MICROCHIP**  
177-3873 KSZ9031RNXIC

**USB to Serial UART Interface**

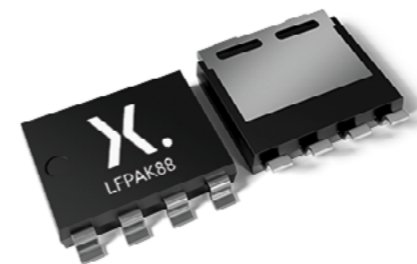
- The FT232RL is a USB to serial UART interface with the following advanced features:
- Single chip USB to asynchronous serial data transfer interface.
- Entire USB protocol handled on the chip. No USB specific firmware programming required.
- Fully integrated 1024-bit EEPROM storing device descriptors and CBUS I/O configuration.
- Fully integrated USB termination resistors



**FTDI Chip**  
257-5453 FT232RNL-TUBE

**Application specific MOSFET**

- Nexperia's unique "SchottkyPlus" technology delivers high efficiency and low spiking performance
- 330 Amp (PSMN1R2-55SLHAX) / 410 Amp (PSMNR90-50SLHAX) continuous current capability
- LFPAK88
- Ideally suited for use in brushless DC motor control, battery protection, lithium-ion battery applications (36V-42V), high power AC-DC applications, and hotswap / in-rush current management



**nexperia**  
251-7923 PSMNR90-50SLHAX

**Bridge Rectifier**

- Universal 3 way terminals: push-on, wrap around or solder
- High thermal conductivity package, electrically insulated case
- Center hole fixing
- Excellent power/volume ratio
- For use in general purpose and instrumentation applications

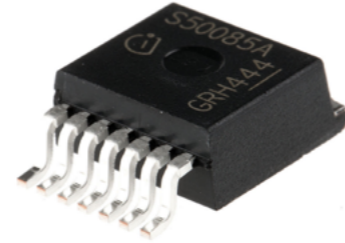


**VISHAY**  
The DNA of tech.  
227-8716 VS-26MB160A



**PROFET™ Power Switches**

- PROFET™ - protected MOSFET - is Infineon's solution for power switch ICs, suitable for automotive and industrial applications
- Intelligent power switches consisting of a DMOS power transistor and CMOS logic circuitry for complete built-in protection
- The PROFET™ series offer protection against overload, overvoltage, short-circuit, excessive temperature, ground and power supply loss



753-2891	BTS500851TMAATMA1
110-7772	BTS621L1E3128ABUMA1
753-3093	ITS4141NHUMA1
110-7725	ITS4200SMEPHUMA1

**Mosfet**

- TrenchFET® Power MOSFET
- 100 % Rg and UIS Tested
- Halogen free
- RoHS Compliant



812-3230	SI4564DY-T1-GE3
----------	-----------------

**Rectifier Diode VS-T40**

- Fast recovery time
- Electrically isolated base plate
- Standard JEDEC® package
- Applications include motor control, inductive heating, inverters and electronic welders



395-9141	VS-T40HFL100S05
----------	-----------------

**Rectifier Diode VS-T70**

- Electrically isolated base plate
- 3500 VRMS isolating voltage
- High surge capability
- Applications include power supplies, battery chargers, welders, motor control and general industrial current rectification



395-9163	VS-T70HF40
----------	------------

**Silicon Carbide Power Mosfets**

- Produced exploiting the advanced, innovative properties of wide bandgap Silicon Carbide materials, resulting in unsurpassed on-resistance per unit area and very good switching performance almost independent of temperature
- Very tight variation of on-resistance vs. temperature
- Very fast and robust intrinsic body diode
- Low capacitance



202-4776	SCT10N120AG
202-5484	SCTH40N120G2V7AG
202-5485	SCTW100N65G2AG



**Stud Rectifier Diode**

- High surge current capability
- Wide current range
- Applications include battery chargers, converters and power supplies



395-2702	VS-16FLR60S02
----------	---------------

**Through Hole Rectifier Diode**

- Low forward voltage drop
- Low leakage current
- High forward surge capability
- For use in general purpose rectification of power supplies, inverters and converters



628-8931	1N4001-E3/54
----------	--------------

**TVS Diode**

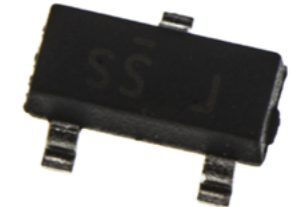
- Excellent clamping capability
- Very fast response time
- Low incremental surge resistance
- AEC-Q101 qualified
- Wide range of uses including industrial, automotive, and telecommunication.



638-1608	1.5KE47CA-E3/54
----------	-----------------

**MOSFET**

- N-Channel MOSFET, 220 mA, 50 V, 3-Pin SOT-23 onsemi BSS138
- Designed to minimize on-state resistance while providing rugged, reliable and fast switching performance
- Particularly suited to low voltage, low current applications such as small servo motor control, power MOSFET gate drivers, and other switching applications



671-0324	MOSFET	BSS138
----------	--------	--------

**Rectifier**

- onsemi 1N4001-1N4007 Axial Lead Standard Recovery Rectifiers



781-5562	1N4001RLG
800-8756	1N4003RLG
184-4627	1N4004RLG
781-5571	1N4006RLG
649-1143	1N4007RLG

**ams Osram ChipLEDs**

- The products are designed for optimized performance out of a very small form factor to realize state of the art solutions.
- Applications like electronic equipment, gaming, white goods, illumination and backlighting.
- Small packages ensure utilization for space critical designs and applications
- Industry standard footprints

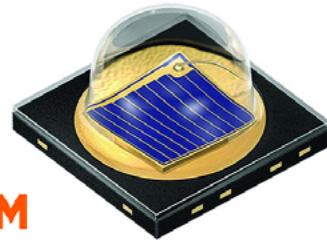


697-3610	LB Q39G-N100-35-1	0603 Blue
654-5773	LG R971	0805 Green
654-5795	LO Q976	0603 Orange
654-5420	LS Q976	0603 Super-red
497-4804	LS R976	0805 Super-red



## ams Osram OSLO Black IR LEDs

- The OSLO Black Series high-flux LED is small and very robust, making it ideal for designing automotive or industrial applications.
- The OSLO Black Series comes in a compact dark package with golden plates. This all-rounder offers a molded silicone lens and a standard solder pack.
- Further features include automotive robustness, benchmark thermal resistance, and a non-isolated heatsink.
- All this plus a long lifetime make the OSLO Black Series a real bright spot for innovative design applications!



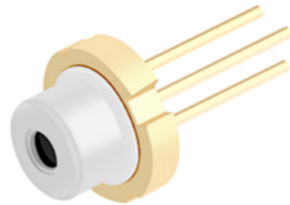
amun OSRAM

876-9423 SFH 4715AS

876-9432 SFH 4716AS

## ams Osram Coloured Edge-emitting Laser Diodes

- Laser diodes in the visible spectral range are the ideal light source in industrial, consumer, medical and automotive markets. Due to their excellent beam quality, ams Osram lasers are ideally suited for the optical imaging of light.
- Single mode lasers are used in a wide range of applications such as Laser levelling, particle detection, scanning, spectroscopy and pico projection.
- High-power multi mode lasers extend the range of applications by material treatment such as engraving or welding of metals, Laser projection and high luminance light sources.



amun OSRAM

226-1791 PLPT9 450LB\_E Blue 447nm - TO90 Package

## Broadcom Tricolor LEDs

- These SMT LEDs come in PLCC-6 packaging with separate heat paths for each LED die, enabling high driving current.
- A wide viewing angle together with a built in reflector increases light output intensity making these LEDs ideal for use in interior electronics signs.
- Industry Standard PLCC-6 package (Plastic Leaded Chip Carrier) with individual addressable pin-out for higher flexibility of driving configuration
- High reliability LED package with silicone encapsulation
- High brightness using AlInGaP and InGaN dice technologies
- Water-Resistant (IPX6\*) per IEC 60529:2001



BROADCOM

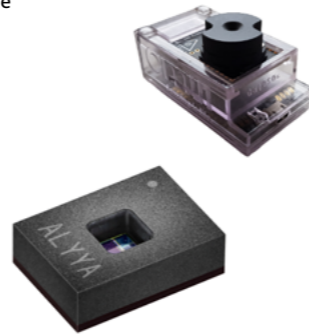
839-9926 ASMT-YTB7-0AA02 PLCC6 Black Body LED

769-3517 ASMT-YTB2-0BB02 PLCC6 Black Top LED

## ams Osram AS7331 UV Sensor and Eval kit

- The AS7331 is a low-power, low noise integrated UV sensor
- Interference filter technology - No filter aging or drifts over lifetime and temperature
- 3 channel UVA/B/C radiation detection incl. daylight (VIS+NIR) blocking
- High dynamic range, adjustable to the application conditions
- Class leading sensitivity
- Broad conversion range
- Extended temperature range
- Usability in harsh environments

NEW



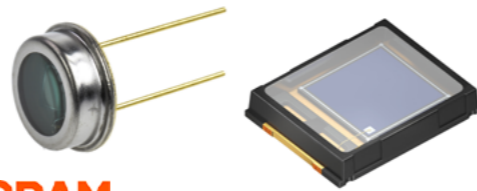
amun OSRAM

272-4082 AS7331-AQFM

272-4083 AS7331-EVK

## ams Osram Photodiodes

- ams OSRAM offers a wide range of photodiodes in various footprints and packages.
- Besides the broad band detectors covering the spectral range from UV to near-infrared, the filter technologies focusing specific wavelength and explicitly designed response characteristic the photodiodes also offer a high linearity and a great stability over a high temperature range.



amun OSRAM

497-5661 BPW 21 350 to 820 nm

654-7785 BPX 61 400 to 1100 nm

497-5677 BPX 65 350 to 1100 nm

654-8895 SFH 213 FA 750 to 1100 nm

## Bivar LED Light Pipes

- PLP2 Front-mount round shaped light pipes engineered to carry light
- 3mm lens size, domed or flat lens appearance
- Lengths from 2.5mm to 30.5mm (.100 in. to 1.20 in.)
- Helps protect sensitive components from ESD
- Use with panel thickness 1.2mm to 2.35mm (.047 to .093 in.)
- Diffused, smoked, and color (blue, black, green, gray, red, yellow) lens options.

BIVAR  
MOVING LIGHT

891-9640 PLP2-1000

713-4703 PLP2-125

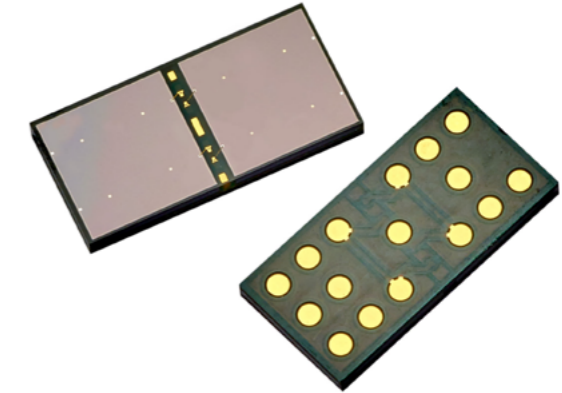
713-4712 PLP2-250

713-4728 PLP2-500



## Broadcom Silicon Photo Multiplier (SiPM) Arrays

- Broadcom Silicon Photomultiplier (SiPM) arrays are used for ultra-sensitive precision measurements of single photons.
- Based on NUV-MT technology, these SiPM arrays combine improved photodetection efficiency (PDE) with decreased dark count rate and reduced crosstalk
- Larger areas can be covered by tiling multiple arrays
- The clear epoxy mold compound (EMC) is highly transparent down to UV wavelengths. Giving a broad response in the visible light spectrum with high sensitivity toward blue and the near-UV region
- The array is best suited for the detection of low-level pulsed light sources, especially for detection of Cherenkov or scintillation light from the most common organic (plastic) and inorganic scintillator materials — LSO, LYSO, BGO, NaI, CsI, BaF and LaBr as examples.



NEW

BROADCOM

261-9701 AFBR-S4N66P024M

261-9700 AFBR-S4N44P164M

## Hamamatsu High Speed Photodiodes

- The S5971, S5972 and S5973 series are a high-speed Si PIN photodiodes designed for visible to near infrared light detection.
- This photodiodes provide wideband characteristics at a low bias, making them suitable for optical communications and other high-speed photometry.

## Features

- S5971 : 100MHz (VR=10V)
- S5972 : 500MHz (VR=10V)
- S5973 series : 1GHz (VR=3.3V)
- High reliability



HAMAMATSU

124-7158 S5971

124-7159 S5972

124-7160 S5973

## Green Laser Alignment kits

- Two high quality interchangeable, plug-and-play Green laser alignment kits.
- These 532nm Green lasers are 9 times brighter than typical Red lasers to the human eye and are particularly suited for use with surfaces such as hot steel, working at longer distances and in higher ambient light levels.
- Typical uses include the alignment and positioning of garments, cloth, paper, wood and metal.
- The kits include six interchangeable optics and are supplied in a heavy duty carry case.
- 697-3522 532nm, 5mW Green Laser, Class 3R
- 127-1566 532nm, 1mW Green Laser, Class 2
- 5 Interchangeable Optics
- Power Supply 110/240 Vac to 3.5 Vdc
- Heavy duty mounting clamp
- Heavy duty carry case



697-3522 532nm, 5mW Green Laser, Class 3R



**Kingbright LED Mount Bezels**

- The RTF series, from Kingbright, are a family of LED bezels
- These black nylon housings are for use with through hole LEDs in various sizes.
- Their black plastic surface offers a high contrast to the LED light output.
- LED bezels are cost effective way improve the appearance of the LED in its chosen application.
- The RTF LED bezels are suitable for use in back panel illumination, circuit board indicators and LED indicator applications.



**Kingbright**

262-2999	RTF-5010
262-3009	RTF-5020

**Osram Opto, SFH 203 FA IR Si Photodiode**

- This family of PIN photodiodes, from OSRAM Opto Semiconductors, are in standard T-1 3/4 (5mm) through-hole packages.
- They have a 1 x 1 mm<sup>2</sup> radiant sensitive area. The T-1 3/4 package photodiodes offer a short switching time.
- Suitable applications include high speed photointerrupters, industrial electronics and control and drive circuits.



**OSRAM**

195-697	2FH 203 FA Through Hole 5mm package
---------	-------------------------------------

**Kingbright Top-Emitting SMD Chip LEDs**

- 1.0 x 0.5 mm (0402)
- Low power consumption
- Ideal for applications including: backlights, status indicators, Home and smart appliances, Wearable and portable devices, Healthcare applications.

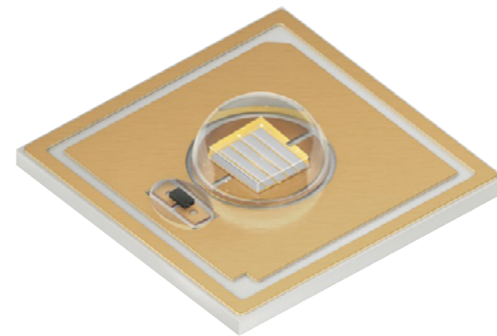


**Kingbright**

861-0122	KPHHS-1005CGCK Green
466-3611	KPHHS-1005MGCK Mega Green
860-9018	KPHHS-1005QBC-D-V Blue
466-3627	KPHHS-1005SECK Super Bright Orange
466-3633	KPHHS-1005SURCK Hyper Red
466-3649	KPHHS-1005SYCK Super Bright Yellow

**OSLON® UV 6060 High-power UV-C LEDs**

- Typical optical output 100 mW
- Peak Wavelength 265 nm
- Typical radiation 150°
- Latest flip chip technology in a 6060 ceramic package with UV-C stable lens
- High-power at highest germicidal effectiveness allows fast and efficient treatment of pathogens
- Compact and robust package design allowing flexible design for any application which requires UV-C radiation



**amur OSRAM**

223-1169	SU CULCN1.VC-GAGD-67-0-100-R18
----------	--------------------------------



**MEAN WELL LED Driver, 48V Output, 240W Output, 5A Output**

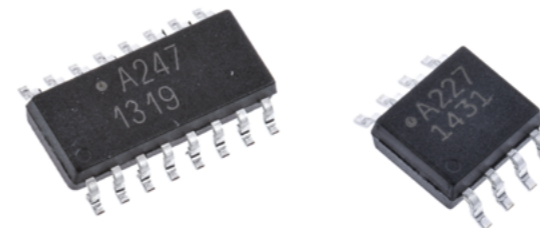
- The LED Driver vital component in LED lighting systems that regulates the power supply to LEDs, ensuring optimal performance and longevity.
- LED drivers come in various forms, including constant current and constant voltage types, tailored to meet the specific requirements of different LED configurations.



283-7464	HLG-240H-48
----------	-------------

**Broadcom ACPL-227/ACPL-247 Phototransistor Optocouplers**

- The ACPL-227 is a DC-input dual-channel half-pitch phototransistor optocoupler that contains two light-emitting diodes optically coupled to two separate phototransistors. It is packaged in an 8-pin SO package.
- Likewise, the ACPL-247 is a DC-input quad-channel halfpitch phototransistor optocoupler that contains four lightemitting diodes optically coupled to four separate phototransistors. It is packaged in a 16-pin SO package.
- For both devices, the input-output isolation voltage is rated at 3750Vrms.
- Response time, tr, is 2 μs typicallye
- Minimum CTR is 50 percent at input current of 5 mA
- Applications include: I/O Interface for programmable controllers, computers, Sequence controllers, System appliances, measuring instruments and Signal transmission between circuits of different potentials and impedances



693-6807	ACPL-247-500E
693-6784	ACPL-227-500E
818-8259	ACPL-227-50BE
693-6797	ACPL-227-50CE
174-3609	ACPL-247-560E

**Connection LED Cable for LINEARlight Flex LED Module, 180mm**

- The SLIMCONNECT series from Osram is a collection of FLEXESSORIES to enable full flexibility in lighting design.
- The tool free assembly creates easy installation and with the solid and robust connection design any and all applications can be trusted over time with added reliability.



**OSRAM**

134-8627	LF-2CONN CONNECTSYSTEM IP67 LP 10X5
----------	-------------------------------------

**Panel Mount Indicator**

- IP67
- 24V
- Recessed or prominent style bezel



491-3691	Green satin prominent LED,24Vac/dc 8mm	190403Z1
491-3685	Red satin prominent LED,24Vac/dc 8mm	190403Z3
491-3607	Green satin recessed LED,24Vac/dc 8mm	190503Z1
491-3944	Grn bright satin LED,24Vac/dc 14mm mount	192103Z1
491-3938	Red bright satin LED,24Vac/dc 14mm mount	192103Z3

**Würth Elektronik LEDs**

- WL-SMCW SMT Mono-color Chip LED Waterclear
- Low energy consumption
- High reliability
- Low current requirement
- Fast switching
- No UV/IR radiation
- Smallest SMT LED package for exceptional brightness
- Top view LED
- Wide viewing angle
- Better solder ability
- Heat dissipation



815-4228	150080BS75000 Blue 0805
815-4221	150080GS75000 Green 0805
815-4225	150080RS75000 Red 0805



Aluminum Electrolytic Capacitors

- Aluminum Electrolytic Capacitors
- Surface Mount Type
- FN series
- 6.3 V to 50 V - High temperature Lead-Free reflow



**Panasonic**  
INDUSTRY

- 204-3397 EEEFN1V330R
- 204-3401 EEEFN1V561UP

Chassis Mount Transformers - USTE 100

- Control transformer for electrical isolation of the input and output.



**BLOCK**

- 419-7423 USTE100/2X115
- 419-7467 USTE1000/2X115
- 419-7439 USTE250/2X115
- 419-7451 USTE630/2X115

Chassis Mount Resistor - HCL 165 series

- Leaded Ultra slim (7.25mm) 100W Aluminium housed power resistor with high power to size ratio.



**TE**  
AUTHORIZED DISTRIBUTOR

- 254-3806 HCL165J100RCX
- 254-3808 HCL165J10RCX
- 254-3822 HCL165J1K0CX
- 254-3844 HCL165J33RCX

Current sense resistors

- SMT 2512 package 10mOhm resistor 3W and 25A constant current



**ISABELLENHÜTTE**  
Innovation by Tradition

- 193-0129 SMT current sense chip resistor 2512 10m Ohm VMS-R010-1.0-U
- 193-0153 SMT current sense chip resistor 2512 1 Ohm VMS-1R00-1.0-U
- 193-0136 SMT current sense chip resistor 2512 5m Ohm VMS-R005-1.0-U
- 193-0142 SMT current sense chip resistor 2512 15m Ohm VMS-R015-1.0-U

ATO Fuse Holder

- ATO Heavy Duty Blade 30A in-line Fuse Holders
- Heavy duty with or without covers Splash-Waterproof
- Includes wire leads



**Littelfuse**

- 419-195 0FHA0002ZXJ
- 738-2784 FHAC0001ZXJ

Fuse Block

- Mountable Fuse Blocks Use with Bolt down MEGA® fuses
- Ideal for battery and alternator connections and other heavy gauge cables requiring ultra high current protection. Includes protective cover.



**Littelfuse**

- 787-4410 0298200.ZXEH

Automotive Fuse Kit

- Automotive fuse kits
- These selections of automotive fuse kits are specifically designed for use in automotive applications, but can also be used in low voltage electronic applications.
- Featuring MAXI™ Blade Fuses, they have "Diffusion Pill Technology" providing low heat dissipation and excellent time delay characteristics.



**Littelfuse**

- 219-9556 00940957XXN
- 219-9562 00950011XXN



Fuses

- Glass cartridge fuses are ideal for providing protection to devices or internal circuits from short circuits and overcurrent.
- They are deliberately weaker components which, when too much current is drawn, will blow.
- Once the fuse has blown it will need replacing in order to make the circuit complete and allow the flow of current.



**Littelfuse**

- 541-2975 02133.15MXP
- 541-4375 0217001.MXP

Through hole Current sense resistors - PBV series

- PCB mount precision resistor with up to 10W permanent power, low ohmic values

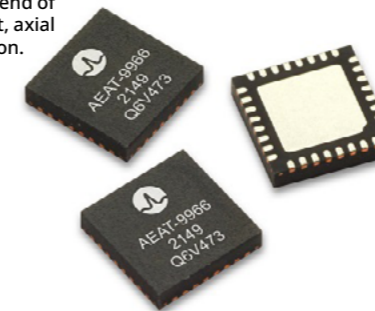


**ISABELLENHÜTTE**  
Innovation by Tradition

- 210-7495 1m Ohm PBV-R001-F1-0.5
- 210-7509 10m Ohm PBV-R010-F1-0.5
- 210-7523 50m Ohm PBV-R050-F1-0.5
- 210-7527 100m Ohm PBV-R100-F1-0.5

Broadcom AEAT-9966 Angular Magnetic Rotary Sensor and Eval Board

- The AEAT-9966 is a dual/redundancy angular magnetic rotary sensor that provides accurate angular measurement over a full 360 degrees of rotation.
- Integrated Hall sensor elements with complex analog and digital signal processing single device.
- Wide magnetic field sensor configurations allow On Axis (end of shaft) or Off Axis (side of shaft, axial and radial) modes in application.



**BROADCOM**  
253-9442 AEAT-9966-Q32

Power Line Filters

- 2 Stage Chassis Mount Filter16A
- FN 2060 two-stage filters are designed for noisy applications requiring good differential and common-mode attenuation



**schaffner**  
MORE POWER TO YOU

- 219-2915 FN2060-16-06
- 766-2655 FN3256H-36-33

Wire wound Potentiometer - 534 series

- 22.2mm Panel Mount single gang 2W Potentiometer, Wire wound 10 turn.



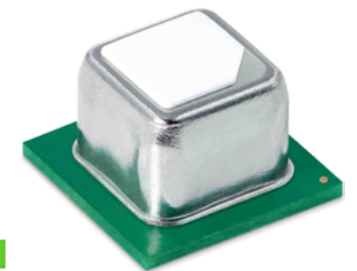
**VISHAY**

The DNA of tech™

- 460-7510 534B1102JL
- 460-7526 534B1103JL

Sensirion SCD4x CO2 sensors

- Sensirion's SCD4x sensor builds on the photoacoustic NDIR sensing principle and Sensirion's patented PASens® and CMOSens® technology to offer high accuracy smallest form factor.
- Smallest form factor: 10.1 x 10.1 x 6.5 mm3
- Reflow solderable for cost-effective assembly
- Digital I2C interface
- Integrated temperature and humidity sensor
- SCD40: Base accuracy, specified measurement range 400 -2'000 ppm
- SCD41: High accuracy, specified measurement range 400 - 5'000 ppm, compatible with relevant IAQ standards, several power modes



**SENSIRION**

- 215-1859 SCD40-D-R1
- 215-1861 SCD41-D-R1





**Weidmüller Rod Multi-Band Antenna with Type N Female Connector, 5G**

- The Weidmüller omni-directional antenna features state-of-the-art technology and industry-proven design.
- It is suitable for both outdoor and indoor use, offering up to IP67 protection.



**287-4813** 2788150000

**Schneider Electric Bluetooth Module**

- The Schneider Electric Bluetooth Audio Receiver is designed for flush mounting and can be fixed securely using claws and screws.
- The device composition includes 1 audio receiver and 1 power supply. Communication is facilitated through Bluetooth with a range of 10 meters.
- The connector type is a 3.5 mm Jack with an impedance of 62 Ohms.
- The device is presented in a white color.
- The input voltage for the jack connection is 100 mVrms, and the output voltage for the power supply is 15 V DC with a maximum output current of 800 mA.



**276-2188** NU3600118

**StarTech.com 2 Port PCIe RJ45 Network Card, 10/100/1000Mbit/s**

- Upgrade your personal device's connectivity in a flash with this network card from StarTech.com.
- Thanks to a speedy data transfer rate of up to 2000Mbps, it sends and receives large files in the blink of an eye.
- The component also adds two RJ45 ports to your workstation, looping into multiple networks at once for hassle-free data sharing.



**123-8093** ST1000SPEXD4

**Infineon Demonstration Board for RADAR**

- The Infineon XENSIV 24GHz radar sensor development kit utilizing BGT24LTR11 RF transceiver and XMC4700 32-bit ARM Cortex-M4.
- Capability to detect motion, speed and direction of movement
- High sensitivity of detection in comparison to PIR
- Arduino compatible microcontroller board



**232-6846** DEMOSENSE2GOLPULSETOB01

**Keysight Technologies Whip WiFi Antenna**

- The Keysight Technologies Retractable whip antenna is a versatile and adjustable telescopic antenna designed for optimal reception in various applications.
- It features a 180 degree tilt angle adjustability, allowing users to customize the antennas orientation for improved signal reception.
- The antenna is equipped with a telescopic whip design.
- 70 to 1000 MHz frequency range

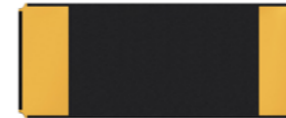


**282-1222** N9311X-500



**32.768kHz SMD LOW PROFILE CRYSTAL**

- Features:**
- Seam sealed ceramic package offers excellent environmental & heat resistance
  - Extended temperature -55°C to +125°C for industrial applications
- Applications:**
- Commercial & Industrial applications
  - Wide range in communication & measuring equipment



**171-2717** ABS07-32.768KHZ-1-T  
**171-2773** ABS07-32.768KHZ-7-T  
**171-2839** ABS07-32.768KHZ-T

**Omron PCB Relays**

- RS offer a wide range of Relay products from throughout Omrons excellent range to cover multiple applications & requirements.



**218-2031** G6B-2114P-US DC24  
**512-9342** G6D-1A-ASI DC24  
**237-5378** G6RN-1 DC24  
**807-3911** G9EA-1-B-CA-DC12  
**366-300** G2R-1-E DC24  
**369-517** G5V-2 DC24

**Battery Disconnect Switch**

- Master Battery disconnect Switch IP67
- Designed for heavy duty applications
- Allows personnel to Lock-Out Tag-Out with Padlock or hasp



**905-8809** 75920  
**905-8815** 880175

**PCB Relay Range**

- RS offer a comprehensive range of Panasonic Relay products
- Solid State; Power; Signal PhotoMos Signal; High Frequency; Safety



**247-4032** ADJH23024  
**247-4046** AGQ20003  
**247-4068** AGQ200S12Z  
**247-4157** AQAD171DL  
**247-4209** AQV252GA  
**231-5487** ASFM0245S

**IS Series Push Button**

- Thin behind-panel depth
- Compact and light
- Plastic button and case
- Excellent tactile feedback
- IP67



**236-9446** IP67 Mom Blk round PB switch pre-wired  
**236-9468** IP67 Mom Red round PB switch pre-wired  
**373-1656** IP67 Momentary black pushbutton switch  
**373-1662** IP67 Momentary green pushbutton switch  
**373-1678** IP67 Momentary red pushbutton switch

**PB6 Series Illuminated Push Button Switches**

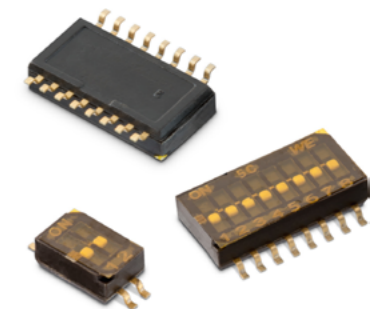
- High Quality IP68 Rated Switches. Invarious Cap Styles and LED Illuminations, Available in Panel Mount & leaded options.
- Applications include Industrial, Communications, Control equipment and Instrumentation.



**239-6372** 2396372 - PN OFF/ON FC BLK M1 TERM IP68 500MM LHS  
**239-6411** 2396411 - Pushbutton Switch OFF/ON FC BLK M3 TERM.  
**239-6415** 2396415 - Pushbutton Switch OFF/ON FC RED M1 TERM.  
**239-6547** 2396547 - Pushbutton Switch OFF/ON FC GRE M3 TERM.  
**239-6562** 2396562 - Pushbutton Switch OFF/ON FC BLU M1 TERM  
**239-6584** 2396584 - Pushbutton Switch OFF/ON FC BLU M1 TERM

**PCB Switches**

- Tact, Rotary, Rocker & Dip & Slide Switches.
- Properties include IP67, Long lifetime; High durability; tight tolerance due to automated production.



**254-1752** 3 Way SMT Dip Switch 416131160803  
**254-1811** IP67 SMT Tactile Switch 434153017835  
**254-1819** SMT Slide Switch 452403012014  
**254-1770** 4 Way SMT Dip Switch IP67 418121270804  
**254-1780** Rotary Coded DIP Switch 428527320916  
**254-1821** Through Hole Slide Switch 452404020202







TE M8/M12 Cable Assembly

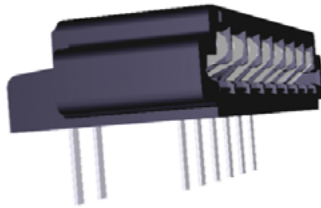
- TE Connectivity's M8/M12 cable assembly/connector series, designed for Factory & Industrial Machine Automation, and Control applications.
- Providing a solution for increased needs of sensor connections that safely and reliably ensure communication in the Industrial Environment.
- Meets IP76 & UL1863 specifications.
- Lengths 0.5m to 30m.
- Visit RS for full range of Sensor Connection solutions.



249-6336	M12 Circular Connector 4 Contact Socket
249-6340	M12 Circular Connector 5 Contact Socket
249-6342	M12 Circular Connector 4 Contact Socket
249-6349	M12 Sensor Actuator Cable Right angle
249-6351	M12 Sensor Actuator Cable Right angle Male
249-6354	M12 Ethernet Cable Female

Trio-Mate Flexible Film Connectors

- 2.54mm centreline FFC/FPC connectors with preloaded socket contacts
- Available in vertical and right angle cable mount styles
- High extraction force
- Reusable 25 times with the same cable thickness



164-2641	5-487508-7
----------	------------

RS PRO Male BNC to Male BNC Coaxial Cable, RG58 Coaxial

- These Coaxial Cables are commonly used for Internal wiring of mainframes, communication instruments, and electronic devices as well as Connection of test head and interface of IC test system.
- This range of coaxial cable assemblies offer a highly reliable electrical connection for your given application.
- A coaxial communication cable, great for communicating
- Standard plug to plug BNC connectors



284-3809	2 m
----------	-----

Test Sockets and Leads

- Staubli's new range of their hugely popular Banana Test sockets & leads, replacing and enhancing from current range.
- Visit RS Website for details on referrels.



261-3794	Test Lead Black 500mm	64.1033-05021
261-3810	Test Lead Black 1m	64.1034-10021
261-3814	Test Plug Blue 32A Gold Plated	64.1045-23
261-3801	Test Lead 19A 1m	64.1033-10022
261-3819	Test Socket Tab Termination Gold Plated	64.3010-22

USB Type-C Connectors

- Deliver data, power and A/V through a single connection at faster speeds
- Enable easy, reliable mating with reversible design
- Allow backward compatibility to other USB connectors using converter cables or adaptors
- Increase power capability up to 100W at 20V



123-5255	USB TYPE C, REC OFFSET 0.65MM DUAL SMT
164-9111	USB TYPE C, REC OFFSET 0.65MM DUAL SMT
123-5254	SPLASH PROOF USB TYPE C REC, DUAL SMT
164-9324	SPLASH PROOF USB TYPE C REC, DUAL SMT

Wurths M12 Circular connector range

- New product - Wurths M12 Circular connector range, field attachable, panel connectors and cable assemblies.
- Provide waterproof and Dustproof connections without loss of connection and signal.
- A coding, with screw locking system. Up to 5A rating, and up to 250V rating.
- Applications include Industrial Automation, Machine manufacturing, DC Power supply, Actuator technologies & Security.
- Visit RS for full range.



271-7527	M12 Circular Connector 4 Contact Socket	643060100604
271-7537	M12 Circular Connector 8 Contact Plug	643110100408
271-7551	M12 Circular Connector 4 Contact Plug	643150100604
271-7601	M12 Circular Connector 5 Contact Plug	643250100305
271-7625	M12 Circular Connector 5 Contact Socket	643280100305
271-7705	M12 Circular Connector 5 Contact Plug	643712100005



Charging Inlets for Industrial & Commercial Vehicles

- TE Connectivity's Charging Inlets for Industrial & Commercial Vehicles.
- Enable fast, safe charging. Withstand 10,000 mating Cycles while charging @ 250Vac and 1000Vdc.
- Modular Design with Cable exists to left or right side. -40°C to +85°C operating temperature range.
- Enhanced safety - Integrated actuator for end position sensing & Integrated PT1000 temperature sensor for enhanced temperature monitoring.



261-4523	Charging Inlet Right Flap Assembly	2358664-2
261-4525	Charging Inlet Right Flap Assembly	2358664-4
261-4527	Charging Inlet Right Flap Assembly	2358664-6
261-4529	Charging Inlet Right Flap Assembly	2358664-8

Fan & motor solutions

- RS offer a huge comprehensive range of Fan & motor solutions.
- Providing energy efficient, intelligent solutions for virtually any ventilation or drive technology task.
- Applications include IT/Telecoms, heating, ventilation, air-conditioning, refrigeration, domestic appliances, industrial engineering, and automotive.
- Visit RS for our full range of products.

ECK Contactors

- ECK range of contactors designed for control in new energy applications.
- Offer innovative and reliable solution for EV Charging stations, solar inverters, battery energy storage systems, automated-guided vehicles & e-Forklifts.
- Hermetically sealed with ceramic sealing technology for safe and reliable use, and small for space saving.
- Can be used in 1000VDC system applications.



260-4191	Contactor 1 Pole 200A 35 VDC	1-2071567-1
260-4198	Contactor 1 Pole 150A 36 VDC	2071567-2
260-4203	Contactor 1 Pole 200A 36 VDC	2-2071567-2
260-4196	Contactor 1 Pole 150A 36 VDC	ECK150HAAPA / 2071567-1
260-4194	Contactor 1 Pole 200A 36 VDC	ECK200AAAPA / 1-2071567-2
260-4201	Contactor 1 Pole 200A 36 VDC	ECK250HAAPA / 2-2071567-1



101-8052	Axial Fan AC	4650N
211-9314	Axial Fan AC	4650Z-876
218-3040	Asial Fan AC	W2E200-HH38-01
221-342	Fan Filter	PMFA120T





LCD Colour Displays - Touch screen

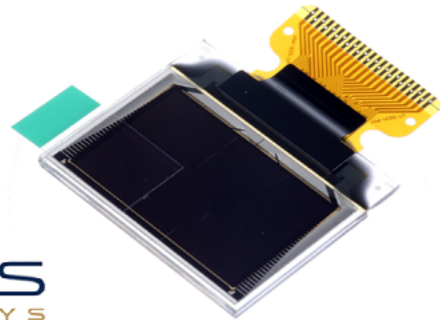
- LCD colour displays are flat panel displays that you find on your computer or mobile phone that use liquid crystals to switch pixels on and off to produce a specific colour.
- A popular type of LCD display is the TFT LCD display module or TFT panel that uses TFT (Thin-Film Transistor) technology.



136-9923	gen4-IoD-32T
125-7948	gen4-uLCD-43DCT-CLB
125-7952	gen4-uLCD-70DCT-CLB
125-7951	gen4-uLCD-70DT
902-8653	uLCD-32PTU
902-8666	uLCD-70DT

OLED Displays

- OLED displays are electronic visual displays based upon organic light-emitting diode (OLED) technology. Like other display types, an OLED Display can be used to present images, text and video a viewer.

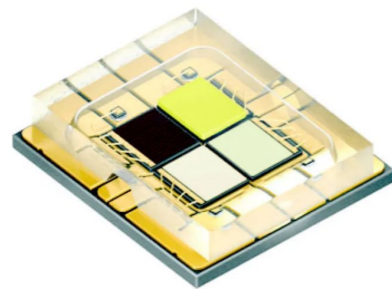


MIDAS  
DISPLAYS

823-5973	MCOT096064AZ-RGBM
823-5920	MCOT128064BY-WM

ams OSRAM RGBW CoB LED

- Outstanding brightness
- Luminance due to surface emission
- Low Roth



amui OSRAM  
181-4332 LE RTDUW S2WP-LAMB-1

LCD Monochrome Displays

- LCD monochrome displays are flat-panel displays used in electronic circuits.
- They use the light-modulating properties of liquid crystals to display black and white images, such as preset words, digits and displays, as found for instance on a digital clock or calculator.



Displaytech Ltd.  
A HUBBARD COMPANY

712-6049	128240D-FC-BW-3
532-6385	162B-CC-BC-3LP
532-6565	202A-BC-BC
627-1668	32128A-FC-BW-3
135-9754	MC42005A6W-FPTLW-V2
135-9756	MC44005A6W-FPTLW-V2

Touch Screen Overlays

- A touch screen sensor is the part of a touch screen device that takes an input from the display screen and translates it into a suitable output action.
- Touch screen sensors are layered on top of electronic visual displays and allow direct interaction with the information shown there.
- Some touch screens require special equipment, such as a stylus, while most can be operated using your fingers.



DMC

710-5250	9545
476-466	AST-065B080A
476-454	AST-084A080A
476-422	AST-121A080A

Copper PCB, FR4, 1 sided, 300x200x1.6mm

- CIF Single-Sided Copper Clad Board FR4 With 35µm Copper Thick, 200 x 300 x 1.6mm
- High-quality layered untreated copper-plated boards.
- Eight layers of glass cloth.
- Graving or touch-up pens are available separately. Product will be packaged in individual protective plastic bags.



C.I.F

219-2123	AD20
----------	------



RS PRO PLA Filament

- High-quality polylactic acid (PLA) material
- Hardens rapidly without deforming for accurate prints
- Made from plant-derived sugars, it is biodegradable and environmentally sustainable
- 1kg reels

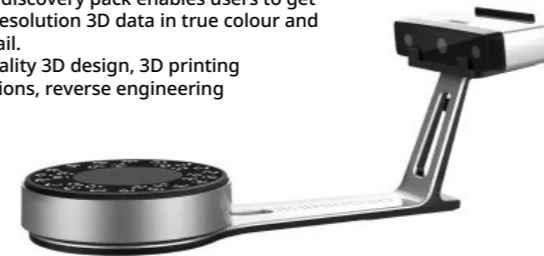


RS PRO

832-0214	Black 1.75mm
832-0264	Black 2.85mm
832-0223	White 1.75mm
832-0273	White 2.85mm
832-0226	Blue 1.75mm
832-0276	Blue 2.85mm
832-0245	Silver 1.75mm
832-0295	Silver 2.85mm
832-0220	Red 1.75mm
832-0270	Red 2.85mm

EinScan-SP Desktop 3D Scanner

- The Shining 3D EinScan-SP making representations of the world in 3D more colourful and accurate.
- EinScan discovery pack enables users to get higher resolution 3D data in true colour and rich detail.
- High-quality 3D design, 3D printing applications, reverse engineering



SHINING 3D

222-9693	1501000003
----------	------------

Igus Print Adhesion Mat for use with Print Bed

- The Igus 200mm x 200mm adhesive film for print bed achieves good adhesion between the print bed and all iglidur tribo-filaments.
- Can be re-used multiple times
- Print large parts without warping



igus

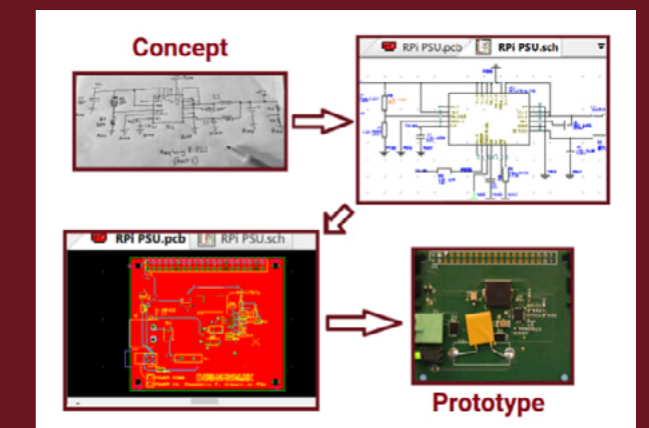
202-4053	200 mm x 200 mm
----------	-----------------



DesignSpark  
PCB

Go from concept sketch to prototype, and further

- Choose DesignSpark PCB for your circuit board design needs, as it has the right set of tools to help you save time, money and prevent errors.
- Start your prototyping journey with our free-of-charge software, and upgrade anytime to our Creator or Engineer paid subscription plans for advanced features.





**RS PRO Soldering Accessory Soldering Iron Solder Tip Cleaner**

- Brought to you by the trusted RS PRO brand, this solder tip cleaner is a neat and convenient way to keep your soldering iron tips clean and effective.
- Brass cleaning ball material
- Suitable for gentle fine cleaning
- Efficient holder with rubber feet for extra stability



**136-8299** Soldering Iron Solder Tip Cleaner

**RS PRO Electric Soldering Iron**

- The RS PRO Soldering iron has electric power type for 176-0007 soldering station.



**179-0020** 50W

**Solder Tips**

- Range of copper solder tips for use with RS PRO digital solder station



- 799-8951** Flat 2.4mm
- 799-8960** Chisel 1.6mm
- 799-8963** Chisel 2.4mm
- 799-8967** Chisel 3.2mm
- 799-8957** Chisel 1.2mm
- 799-8954** Round 2.5mm
- 799-8945** Knife 2mm

**RS PRO Compact Mini Anti-Static Solder Sucker De-soldering Gun**

- Solder sucker, desoldering gun.
- Compact mini model.
- Smaller than a standard model.
- Anti-Static model



**479-5904** 154mm length

**Lead-Free Solder**

- Resin-based, SAC305 lead free solder wire that utilises a synthetically refined resin and effective activator package
- The alloy used in this solder wire conforms to J-STD 006 and contains 96.5% tin, 3.0% silver and 0.5% copper
- Melting point is 217-219°C



- 800-7649**
- 756-8875**
- 756-8884**
- 756-8893**
- 800-7655**
- 800-7642**
- 756-8913**
- 756-8897**



**Chemtronics 1.5m Lead Free No Clean Desoldering Braid**

- Fast, safe, de-soldering braid specifically formulated for use with Lead-free applications
- More efficient than conventional de-soldering braids
- Non-corrosive, ultra high purity no-clean flux
- Will not leave ionic contamination on the boards
- Can also be used with tin/lead solders



**Chemtronics**  
**336-485**

**Multicore Lead Free Solder Mask 250ml Bottle**

- Latex gel designed to mask PCB holes and edge contacts prior to soldering.
- Ideal for temporary sealing of areas requiring further hand soldering or assembly at a later date
- Cures at room temperature (typically 2 hours at ambient temperature or 40 minutes at 80°C for a 2mm layer)
- Latex removed simply by peeling it away from the substrate
- Should only be used when flux removal is not necessary, i.e. with non-corrosive fluxes
- Supplied in 250 ml container



**561-549** 250 ml

**No Clean Desoldering Braid**

- De-soldering braid packaged in static dissipative bobbins
- Significantly reduces rework/repair time
- Minimises the risk of damage to the board
- Patented non-corrosive, halide free, organic no-clean flux
- Length 1.5m



**Chemtronics**

- 314-3289** 0.8mm
- 314-0987** 1.5mm
- 314-3302** 1.5mm
- 314-0993** 2.0mm
- 314-1003** 2.8mm

**Chemtronics Lead Free, Peelable Solder Mask 236ml Bottle**

- Temporary latex solder masking agent for protecting PCB's from solder and flux overflow during soldering.
- Fast curing (dries tack-free in around 30 minutes)
- Easy to use - just peel off mask
- Latex material is compatible with flux systems
- Stable with cleaning solvents
- Supplied in 236 ml container



**Chemtronics**  
**277-8222** 236 ml

**Felder Lottechnik Wire**

- 183°C Melting Point



- 104-7167** 0.75mm Lead solder
- 104-7173** 1mm Lead solder
- 104-7189** 1mm Lead solder
- 104-7268** 2mm Lead solder

**Desoldering Tool**

- Professional tool used to cleanly remove solder
- Released by push button and re-primed by a plunger, the solder sucker picks up the debris by sucking it up



**479-4197**



**Anti-Static Bags**

- Zipper topped bags for protecting sensitive equipment from ESD damage
- Dissipative outer section, anti-static interior
- Sold in packs of 10



<b>431-9538</b>	102 x 152mm
<b>431-9544</b>	152 x 203mm
<b>431-9550</b>	254 x 305mm
<b>431-9566</b>	305 x 406mm
<b>431-9572</b>	457 x 457mm

**Adjustable ESD Wrist Strap and Cord Sets**

- Comfortable & adjustable wristband with an easy to use adjustable clip which makes taking on & off easy
- 1.8m coiled cord provides lots of movement & flexibility



<b>392-163</b>	Wrist strap only
----------------	------------------

**Anti-Static Wheel with Rubber Tyre**

- A hard wearing and cost-effective solution to anti-static proofing.
- 100mm diameter with rubber tyre
- 10kΩ max resistance
- Plain sleeve bearing is 6.0mm id



<b>448-9946</b>	100mm diameter
-----------------	----------------

**Cleanroom Tacky Mat**

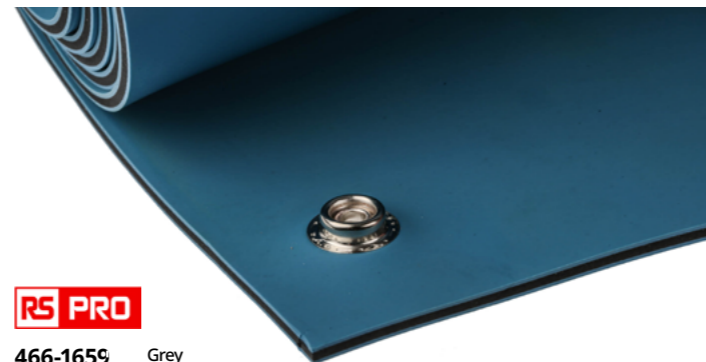
- LDPE Floor Mat
- Remove contamination on contact
- Peel to expose a clean surface (30 sheets)
- No washing or cleaning of mats with messy fluids and mops
- Use with or without a frame, low profile construction
- Full adhesion bottom holds floor securely yet easy to remove and leaves no residue
- Numbered corner tabs for easy removal of the used sheet



<b>829-5293</b>	Blue, 1.14m x 660mm x 1.65mm
<b>829-5281</b>	Blue, 1.14m x 460mm x 1.65mm
<b>829-5287</b>	White, 1.14m x 460mm x 1.65mm

**ESD Safe Mats**

- Bench mat made of a conductive layer with a static-dissipative layer above and below
- Ideal for use on benches or floors
- Has 10mm studs on each corner
- 600 x 1200 x 3.2mm



<b>466-1659</b>	Grey
<b>466-1643</b>	Blue

**RS PRO ESD Tape**

- Used for packaging
- Anti-static
- Clear colour
- Complies with EN 61340-5-1
- Non-conductive
- Dissipative
- Logo text/logo on tape
- Not suitable for use in a cleanroom



<b>443-9834</b>	48 mm x 36 m ESD Safe Tape
-----------------	----------------------------



**HyFlex 11-100 Nitrile Foam Knitted Glove**

- Specially designed for work in microelectronics where electrostatic discharge must be avoided.
- ESD knitted protective glove
- Nitrile foam coated palm
- Slim design improves handling of ever smaller components



<b>806-4706</b>	Size 8, Medium, 1 Pair
<b>806-4715</b>	Size 9, Large, 1 Pair

**RS PRO Latex ESD Finger Cots**

- Ideal for use in your ESD-safe (electrostatic discharge) working environment as they won't restrict your hands.



<b>266-2896</b>	Size 10, XL, 1 Bag of 100
<b>829-5174</b>	Size 10, XL, 1 Box of 720
<b>266-2903</b>	Size 10, XL, 1 Bag of 720
<b>241-8425</b>	Size 9, Large, 1 Bag of 720
<b>829-5170</b>	Size 9, Large, 1 Box of 720
<b>829-5168</b>	Size 7, Small, 1 Box of 720
<b>266-2874</b>	Size 9, Large, 1 Bag of 100
<b>241-8144</b>	Size 7, Small, 1 Bag of 720
<b>241-8403</b>	Size 8, Medium, 1 Bag of 720
<b>266-1786</b>	Size 7, Small, 1 Bag of 100
<b>266-2868</b>	Size 8, Medium, 1 Bag of 100
<b>829-5177</b>	Size 8, Medium, 1 Box of 720

**Electrolube 250ml Anti-Static Spray**

- Eliminates static discharges and prevents reoccurrence
- Prevents damage to voltage sensitive components and circuits
- Supplied in a pump action bottle for use in hazardous working environments
- Safe on delicate surfaces will not harm plastic surfaces which may be attacked by solvents
- Provides long term effects
- Shelf life is 48 months



<b>1558184</b>	250ml
----------------	-------

**RS PRO ESD Laboratory Coats**

- Electro-Static Discharge (ESD) lab coat, is ideal for all your laboratory, science, medical and engineering work.
- Fitted with two side pockets and one breast pocket
- Closure buttons
- Complete with ESD symbol



<b>789-8090</b>	XL
<b>789-8087</b>	M
<b>789-8081</b>	L
<b>789-8084</b>	S
<b>789-8093</b>	XXL

**SCS Heel Grounder**

- Features a D-ring style strap and an elastic hook and loop for adjustability.
- Designed and manufactured for comfort, durability and cost-effectiveness.
- Contains a current limiting resistor, which protects the operator from accidental exposure to electricity.
- Must be worn on both feet to maintain ground contact while walking.



<b>838-1209</b>	Heel Grounder
-----------------	---------------

**SCS ESD Grounding Cord With 10 mm Stud**

- The SCS ESD grounding cord is a 15ft 20AWG PVC wire. It has moulded-in male snap fastener with integral 1Mohm resistor on one end and solderless terminal on other.
- It comes in black nylon cover with black polyester insert and has a #10 ring terminal.
- Connects all static control mats and runners to building ground.
- Has 10mm male stud
- Good for connecting mat directly to common point ground



<b>174-5048</b>	3040
-----------------	------

**Digital Multimeter Benchtop**

- 6.5 digit basic Truevolt DMM with Truevolt technology for greater accuracy and quicker measurement insights.
- Standard 3-year Warranty.



<b>777-7101</b>	75 ppm basic DCV accuracy, DC current measurement range from 100 µA to 3 A	34460A
<b>777-7104</b>	35 ppm basic DCV accuracy, DC current measurement range from 100 µA to 10 A	34461A
<b>867-2287</b>	30 ppm basic DCV accuracy, Test low-power devices with 1 µA range and pA resolution	34465A

**Digital Multimeter Benchtop**

- 7.5 digit Truevolt DMM with Truevolt technology for greater accuracy and measurement insights. 16ppm basic DCV accuracy, 50K readings/s.
- Measure with confidence, with high basic DCV accuracy of 16 ppm
- Test low power devices with 1 µA range and pA resolution



**867-2280** Digital multimeter, 7 1/2 digit, basic Truevolt DMM 34470A

**Economy Multimeter Benchtop**

- Smart 5.5 digit DMM with software to control and capture data in an affordable and compact package
- Fast reading rate of up to 110 readings/s for speed-critical measurements
- 5,000 points logging memory for recording more data and perform analysis
- Standard 3-year Warranty



**215-4790** Digital Multimeter, 5.5 digit EDU34450A

**Data Acquisition Benchtop**

- Built-in USB memory port lets you conveniently collect data on a flash drive
- Autocalibration compensates for temperature fluctuations to ensure accuracy
- Standard 3-year Warranty



<b>177-1105</b>	No GPIB	DAQ970
<b>197-6845</b>	With GPIB	DAQ973

**Digital Multimeter Benchtop**

- 8.5-digit precision with leading-edge DCV linearity accuracy, the lowest internal noise
- Measure with confidence with up to 8 ppm per year direct current voltage (DCV) accuracy (4 ppm with option)
- Test low power devices with low DC current measurement range from 100 nA to 1 A.
- Standard 3-year Warranty



**195-3124** Digital multimeter, 8.5 digit 3458A

**InfiniiVision 200X Series Digital Bench Oscilloscope**

- Built-in digital voltmeter and frequency counter for flexible measurement options
- USB 2.0 and LAN connectivity for ease of connection and data transfer to a PC
- Standard 3-year Warranty



<b>200-5274</b>	2 channel without Function Generator	DSOX1202A
<b>200-5275</b>	2 channel with Function Generator	DSOX1202G
<b>182-8410</b>	4 channel without Function Generator	DSOX1204A
<b>182-8412</b>	4 channel with Function Generator	DSOX1204G

**Precision Screwdriver Set**

- 24-piece screwdriver set is ideal for working on small, intricate electronic devices
- Comes in a handy plastic hanging case
- Set contains: slotted: 1.0 x 50, 1.2 x 50, 1.5 x 50, 1.8 x 50, 2.0 x 50, 3.0 x 75, 3.5 x 75, 4 x 75mm; hexagon: 1.5 x 50, 2 x 50, 2.5 x 50, 3 x 75mm; Phillips: PH0 x 50, PH00 x 50, PH1 x 75mm; pozidriv: PZ0 x 50, PZ1 x 75mm; Torx: T6 x 50, T7 x 50, T8 x 50, T9 x 50, T10 x 50, T15 x 75, T20 x 75mm



**876-6278**

**Professional Electronic Tool Kit**

- Complete kit with carefully selected tools for electronic engineers
- Contains: snipe nose pliers, side cutters, slotted screwdrivers, Philips screwdrivers, adjustable spanner and straight tipped tweezers in a handy wallet



**418-9309**

**Lindstrom Pliers**

- Supreme series snipe & flat nose pliers with ESD safe mono-material handles with return spring
- High performance alloyed steel with polished finish
- Numerically controlled machine grinding guarantees accuracy & increases the tools reliability & consistency
- Tough hardened 42-46 HRC
- Screw joint that minimises friction & maximises jaw alignment
- 32mm jaws with radiused edges



<b>614-794</b>	Snipe Nose Plier, 6mm tip width	7890
<b>609-792</b>	Flat Nose Plier, 3.2mm tip width	7490

**TE Connectivity PRO-CRIMPER III**

- Sturdy and reliable contacts
- Double contact spring design
- Secondary lock ensures correct and complete insertion of the contact
- Silicone rubber seals



**314-1362** 0.5 □ 1.5mm<sup>2</sup>

**SL25 25-Piece Socket & Bit Set**

- ¼" hexagon drive socket set has soft grip ratchet with quick release button making it easy to use and more productive
- Set contains: ratchet, bit holder, extension bar, 4-13mm sockets and screwdriving bits supplied in a handy case



**254-197**



**ESD Tool Kit**

- Professional ESD safe tool kit featuring popular sized cutters, pliers, screwdrivers and tweezers housed in a ESD safe tool wallet
- Contains 2.5 x 75mm slotted, PH00 x 60mm and fine curved tweezers 120mm



249-8657

**Stainless Steel Tweezer Set**

- Designed for intricate work in the electronics industry
- Anti-acid and anti-magnetic



136-9872

**RS PRO Hand Ratcheting Crimp Tool**

- Ergonomic non-slip main handle and low friction moving handle ensure a comfortable hand grip
- Provides two-hand grip in the final phase of crimping, increasing comfort and productivity
- Full cycle crimp mechanism to ensure consistent, reliable crimp



683-1623 Crimp Tool for BNC, TNC, N, Ethernet and Thinnet Connectors

**Automatic Wire Stripper**

- Self-adjusting wire stripper with hardened steel blades and integral wire cutter (for single wires)
- Stripping length adjustment to suit application
- Stripping range 0.2-6mm



613-044

**Insulated Crimp Kit with Tool**

- Handy crimp terminal kit containing 800 high-quality colour coded insulated terminals in a range of popular sizes along with a compact crimp tool
- Contains crimps for use with wire size range of 0.5-6mm<sup>2</sup>
- For full contents visit our website



613-9952



**Your smart choice  
for Electronics engineering**

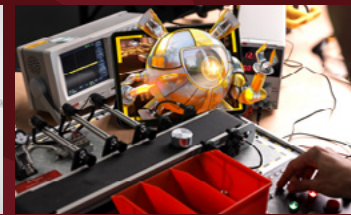
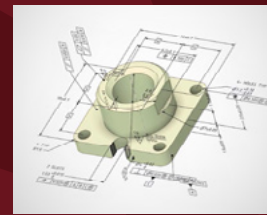
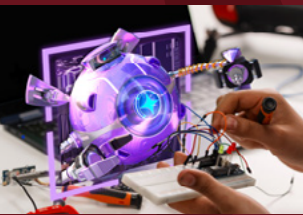
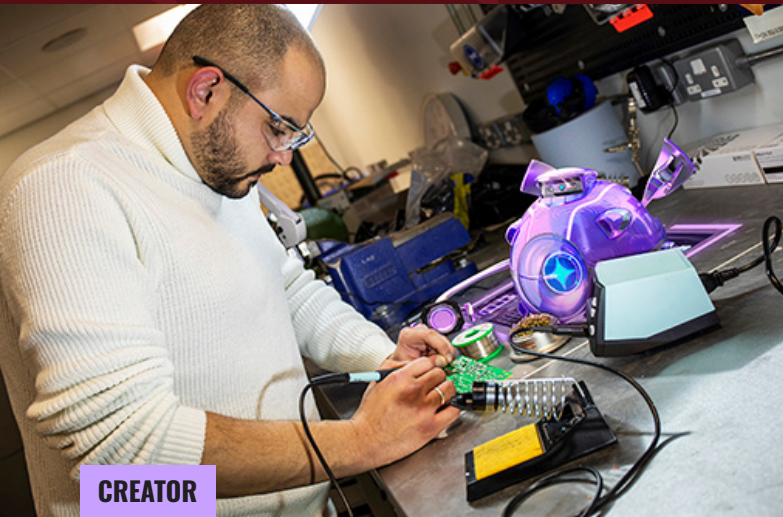


**Electronics for every technological and industrial sector.**

RS PRO offers a wide range of high-quality electronics components to meet your needs. From Industrial Connectors and Passives, all the way to our newest Test & Measurement equipment.



Essential engineering packages with software, tools and resources designed specifically for you.



# ENGINEERING REDEFINED, TOMORROW REIMAGINED.

## CREATOR

DesignSpark Creator is where the imagination soars, where inspiration meets innovation. Where you can defy limits, every design, every day.

Discover the power of symmetry with our Mirror tool, and ignite your PCB design journey with our integrated SnapEDA library.

**Could you be a DesignSpark Creator?**

## ENGINEER

Engineer is where concepts turn to masterpieces, you're engineering a future that defies the ordinary and embraces the extraordinary.

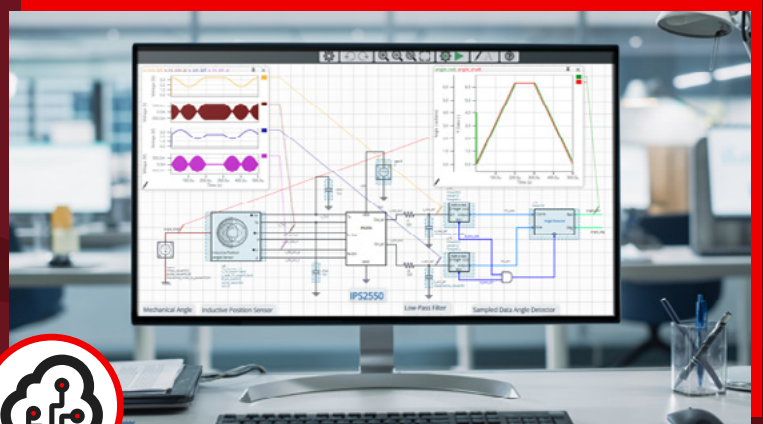
Unlock all the perks of the Creator package and gain extra features like blind and buried vias, hierarchical schematic designs, differential pairs and much more to help you scale for production.

**Do you dare to Engineer?**

## CIRCUIT SIMULATOR

Test circuits as you build them with DS Circuit Simulator, a cloud-based design, modeling, simulation, and analysis environment. Creator and Engineer subscribers benefit from more time in the simulator, fine-tuning and testing for longer.

- 60min of simulation time
- Analog, digital, mixed-signal and multi-domain systems including electro-mechanical and electro-thermal.
- Unlimited public designs
- Engineer private groups for collaboration (DS invite only)



**TRY OUR 7 DAY FREE TRIAL**