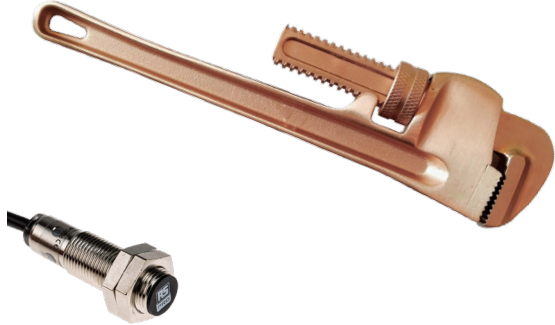




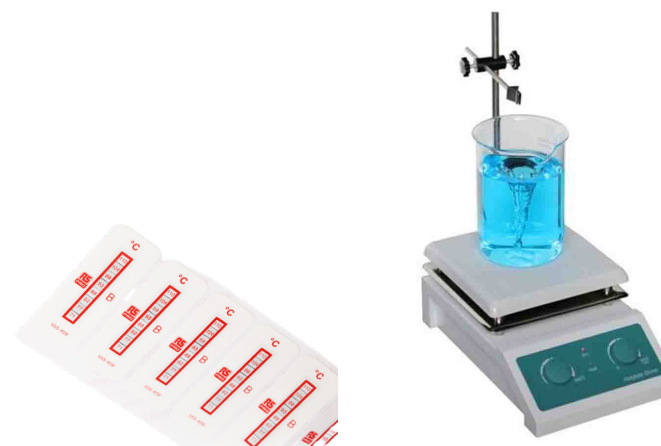
rspro.com

CHEMICAL & PHARMA HARSH ENVIRONMENT

RANGE GUIDE



CHEMICAL & PHARMA HARSH ENVIRONMENT WORKING ENVIRONMENTS	3
LABORATORY	4
AVAILABLE RANGE	4
RELATED PRODUCTS	5
PRODUCTION LINE	6
AVAILABLE RANGE	6
RELATED PRODUCTS	8



LABORATORY



PRODUCTION LINE





Funnels



Hot Plate Stirrers



Jugs & Beakers



Lab Bottles



Magnifiers



Magnifying Lamps



Measuring Cylinders



Microscopes



Pipettes



Ultrasonic Cleaners



Spillage Control



Lab Flasks



Weighting Scales



Lab Coats



Disposable Gloves



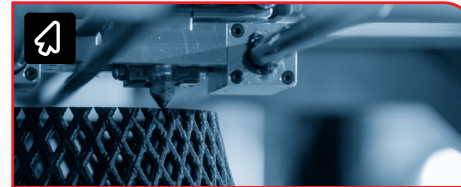
Safety Flooring



Personal Protective Equipment & Workwear



ESD Control & Clean Room



3D Printing



Floor Cleaning



Cable Ties & Fixings



Safety Signs

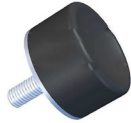
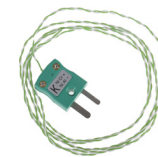


Waste & Recycling



First Aid



**Industrial Circular Connectors****Anti Vibration & Levelling Components****Electrical Power & Industrial Cables****Hose Pipe & Fittings****Structural Systems****Rotary Bearings & Housing Units****Castors & Wheels****Pressure Sensors****Proximity Sensors****Hook Up Wire****Networking & Coaxial Cables****Float Switches****Lighting****Photoelectric Sensors****Thermocouples****Pneumatic Connectors, Fittings & Hose**



MCBs



DIN Rail Power Supplies



Contactors



Relays



DIN Rail Terminal Blocks



Temperature Controllers



Automation Signalling



Push Button Switches



Network Switches



Enclosures



Safety Barriers



Emergency Stop Push Buttons



Limit Switches



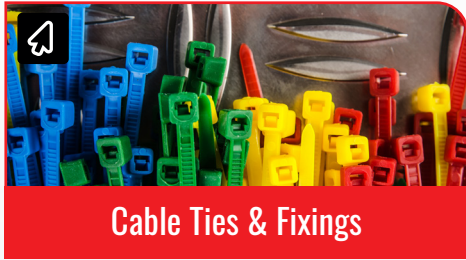
Multi Function Panel Meters



Signal Conditioners



Plumbing & Pipeline



Cable Ties & Fixings



Wire Terminals & Splices



Cable Glands & Fittings



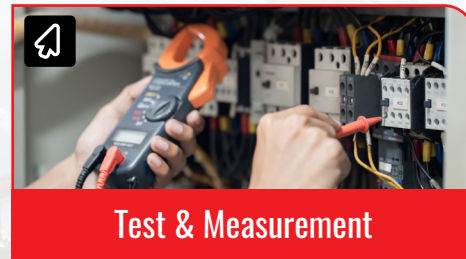
Greases, Oils & Lubricants



Personal Protective Equipment & Workwear



Fasteners & Fixings



Test & Measurement



Hand tools



RS PRO products are audited against demanding international standards, inspected for durability and consistency and tested by leading engineers.

Only when products have been through this process they are awarded our seal of approval, quality that can be trusted. Confidence in this process is reflected in our long product warranties, proof that our products will consistently deliver the quality you expect for a long time to come.



AUDITED

In compliance with industry standard



INSPECTED

By leading engineers



TESTED

For guaranteed quality and performance

