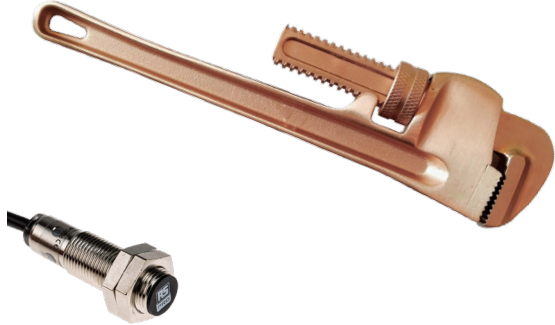




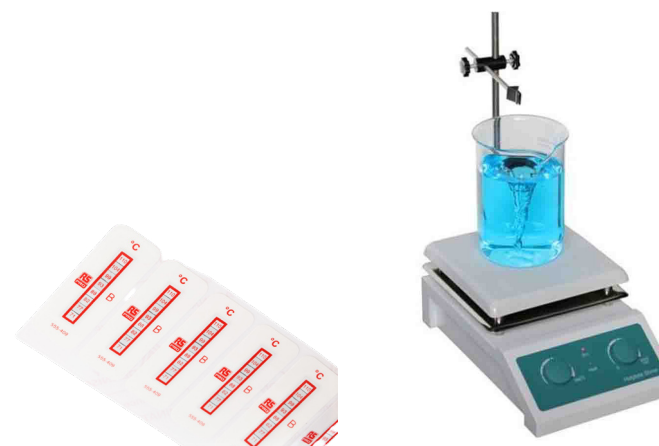
rspro.com

# CHEMICAL & PHARMA HARSH ENVIRONMENT

## RANGE GUIDE



CHEMICAL & PHARMA HARSH ENVIRONMENT WORKING ENVIRONMENTS	3
LABORATORY	4
AVAILABLE RANGE	4
RELATED PRODUCTS	5
PRODUCTION LINE	6
AVAILABLE RANGE	6
RELATED PRODUCTS	8



LABORATORY



PRODUCTION LINE





Funnels



Hot Plate Stirrers



Jugs & Beakers



Lab Bottles



Magnifiers



Magnifying Lamps



Measuring Cylinders



Microscopes



Pipettes



Ultrasonic Cleaners



Spillage Control



Lab Flasks



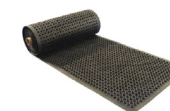
Weighting Scales



Lab Coats



Disposable Gloves



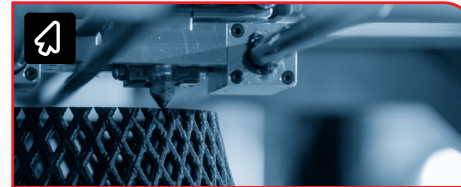
Safety Flooring



Personal Protective Equipment & Workwear



ESD Control & Clean Room



3D Printing



Floor Cleaning



Cable Ties & Fixings

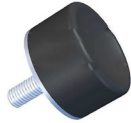


Safety Signs

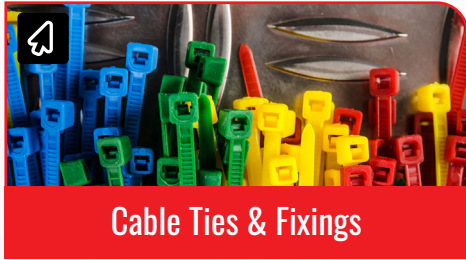


Waste & Recycling



**Industrial Circular Connectors****Anti Vibration & Levelling Components****Electrical Power & Industrial Cables****Hose Pipe & Fittings****Structural Systems****Rotary Bearings & Housing Units****Castors & Wheels****Pressure Sensors****Proximity Sensors****Hook Up Wire****Networking & Coaxial Cables****Float Switches****Signal Conditioners****Photoelectric Sensors****Thermocouples****Pneumatic Connectors, Fittings & Hose**

**Plumbing & Pipeline****DIN Rail Power Supplies****Contactors****Relays****DIN Rail Terminal Blocks****Temperature Controllers****Automation Signalling****Push Button Switches****Network Switches****Enclosures****Safety Barriers****Emergency Stop Push Buttons****Limit Switches****Multi Function Panel Meters**



**Cable Ties & Fixings**



**Wire Terminals & Splices**



**Cable Glands & Fittings**



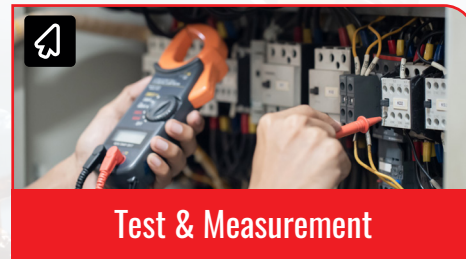
**Greases, Oils & Lubricants**



**Personal Protective Equipment & Workwear**



**Fasteners & Fixings**



**Test & Measurement**



**Hand tools**



**RS PRO products are audited against demanding international standards, inspected for durability and consistency and tested by leading engineers.**

Only when products have been through this process they are awarded our seal of approval, quality that can be trusted. Confidence in this process is reflected in our long product warranties, proof that our products will consistently deliver the quality you expect for a long time to come.



**AUDITED**

In compliance with industry standard



**INSPECTED**

By leading engineers



**TESTED**

For guaranteed quality and performance

