



**We Make Lives Better  
Through Connections.**

---

# **CO 119 BRT Stakeholder Meeting #3 July 19, 2023**

Adnana Murtic, CDOT, PE I

Ali Imansepahi, RTD, Project Manager & BRT Engineering Lead, Engineering Division

Brian Thye, RTD, Engineer IV, Capital Programs

Nataly Handlos, RTD, Senior Service Planner & Scheduler, North Team, Service Development

Steven Brier, RTD, Senior Manager, Marketing Communications Department

August 8, 2023



# CO 119 BRT – Planning & Construction Process (Proposed)



**Timelines (Proposed)**



**Shelter Type (Tolar-BRT 23)**



**Station Updates**



**System Analysis Scope**



**Wayfinding Brand Identity**



# Colorado 119 BRT Project

## Timelines

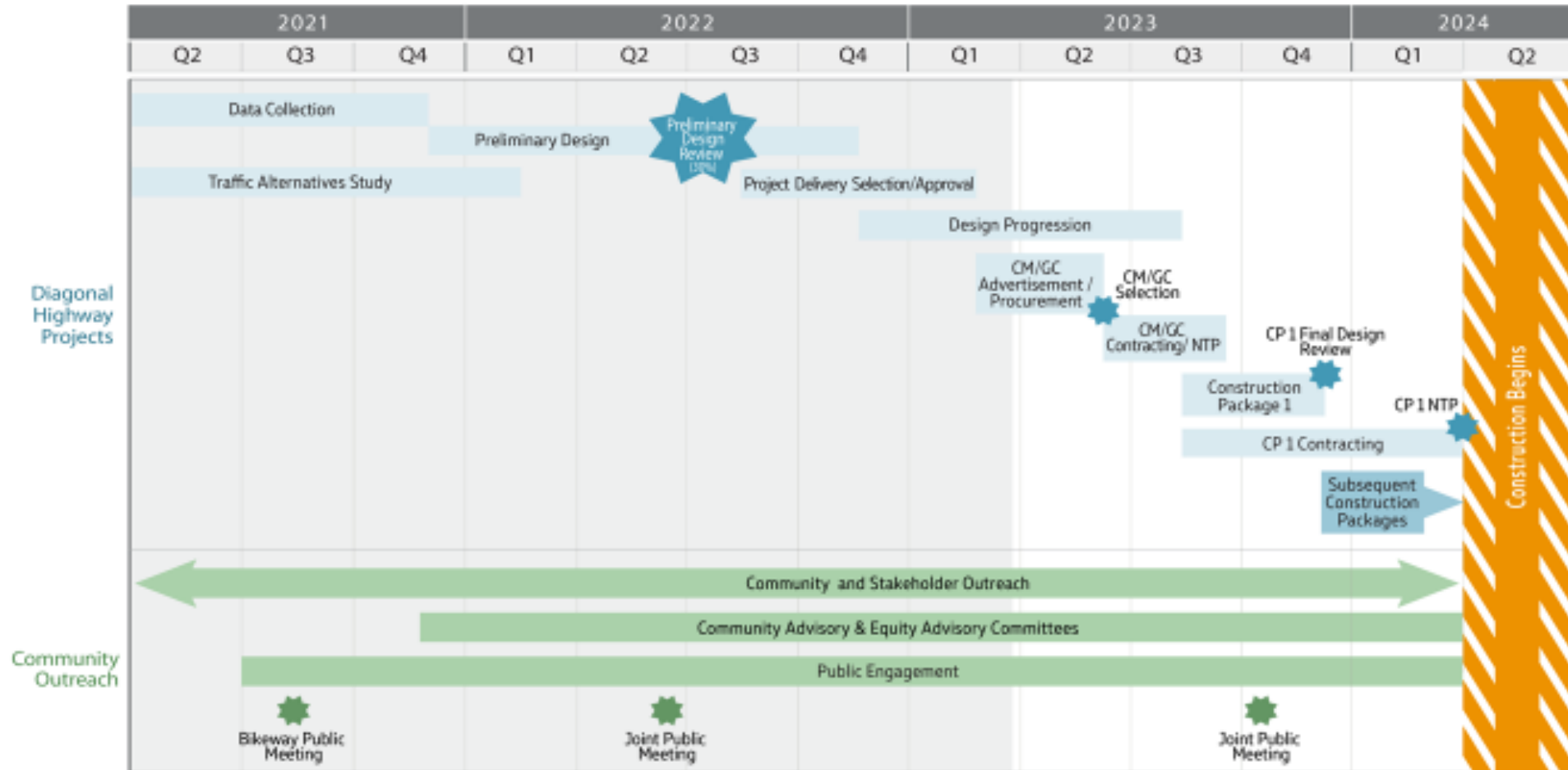
(Proposed)



# Colorado 119 BRT Project

# Timelines (Proposed)

## (CDOT Safety & Mobility Improvements Project)



July 6, 2023

# Colorado 119 BRT Project

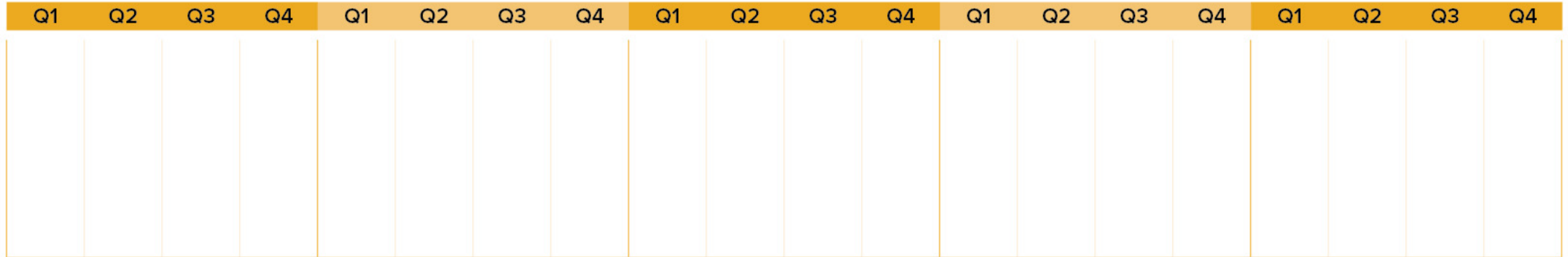
# Timelines (Proposed)



Design & Construction



Public Engagement



Service Development



# Colorado 119 BRT Project

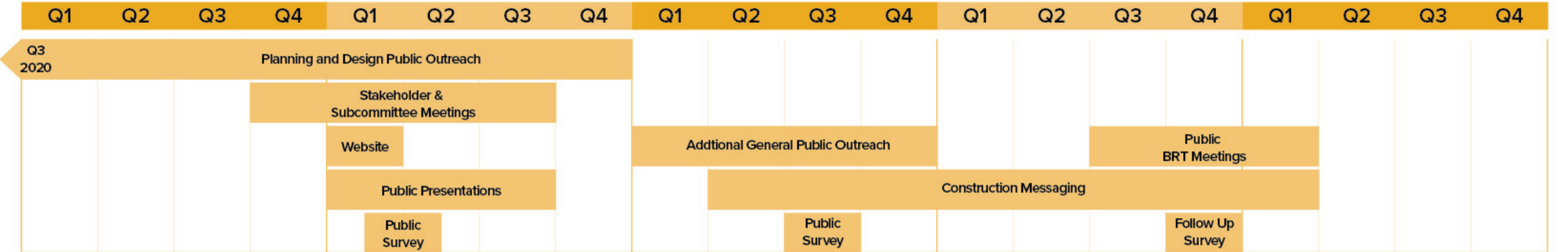
# Timelines (Proposed)



Design & Construction



Public Engagement



Service Development



# Colorado 119 BRT Project

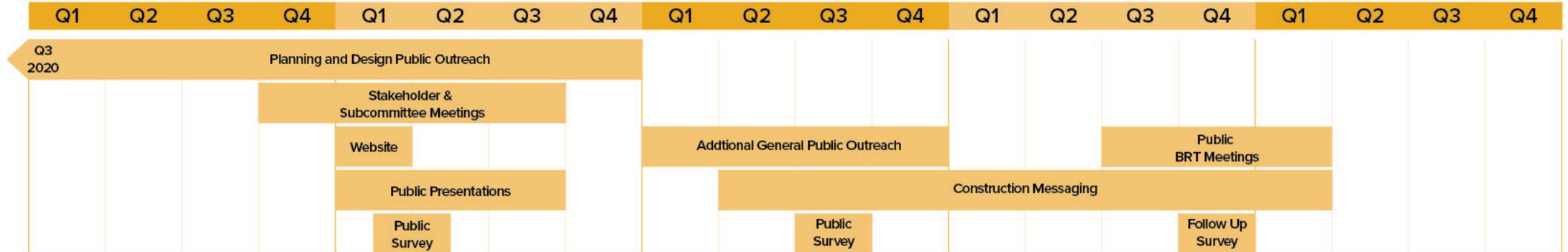
# Timelines (Proposed)



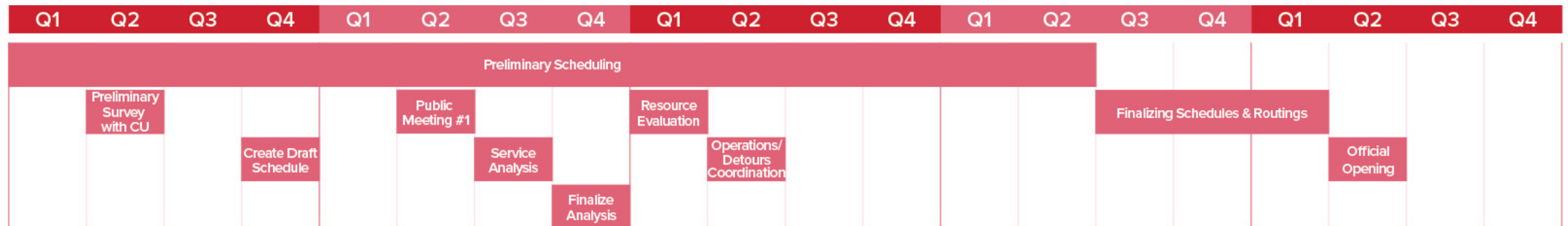
Design & Construction



Public Engagement



Service Development





# Colorado 119 BRT Project

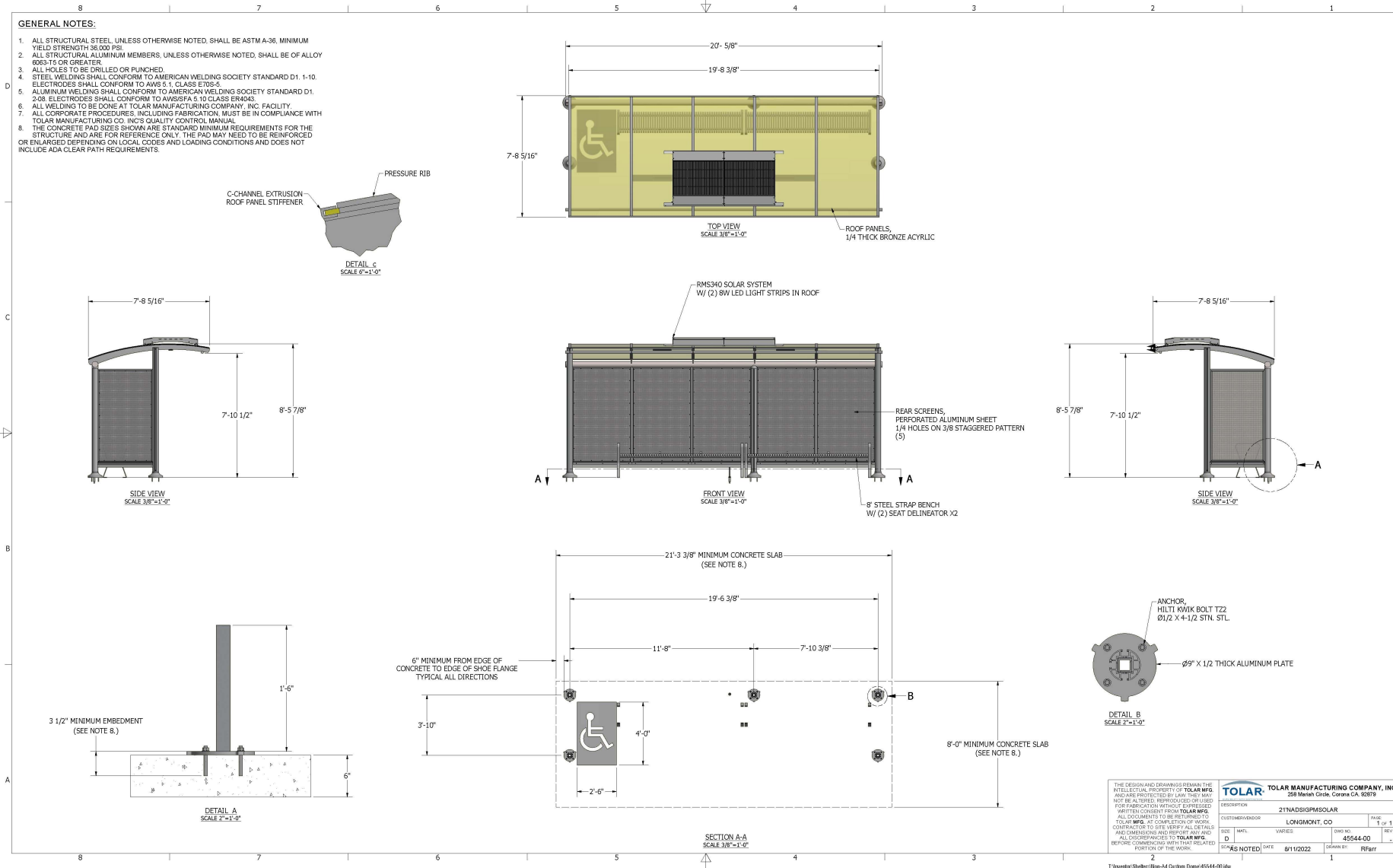
## Shelter Type





# Colorado 119 BRT Project

# Shelter Type (Proposed)

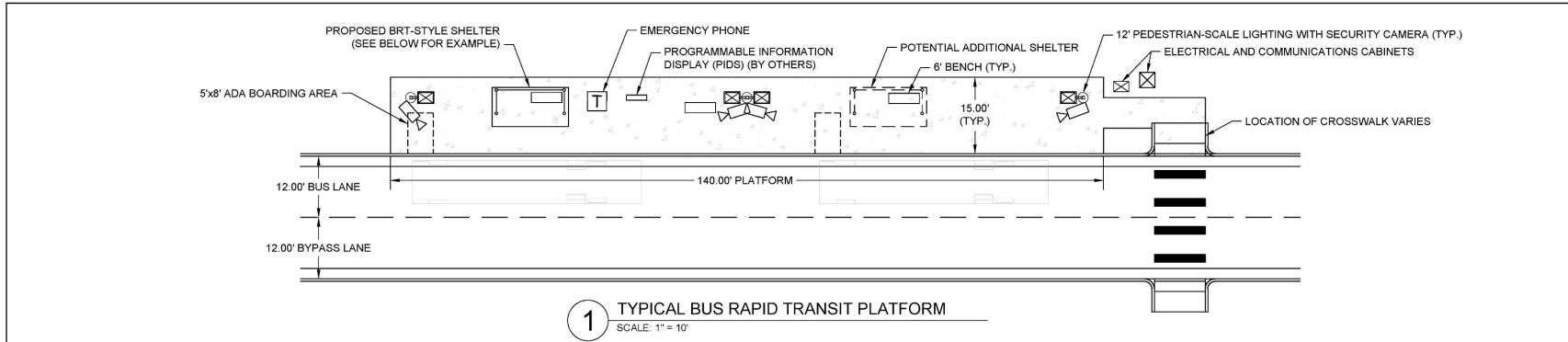


- **Tolar BRT – 23**
  - Variations in size available to match space and needs at stations and PnR's
  - Amenities would also depend on ROW constraints

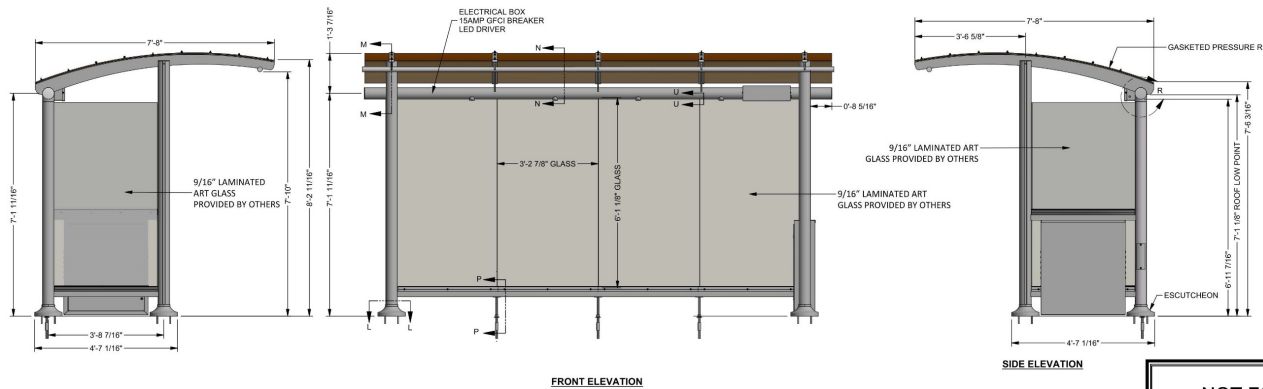
THE DESIGN AND DIMENSIONS REMAIN THE INTELLECTUAL PROPERTY OF TOLAR MFG. AND ARE PROTECTED BY LAW. THEY MAY NOT BE ALTERED, REPRODUCED, OR USED FOR FABRICATION WITHOUT EXPRESS WRITTEN CONSENT FROM TOLAR MFG. ALL DOCUMENTS TO BE RETURNED TO TOLAR MFG. UPON COMPLETION OF WORK. CONTRACTOR TO SITE VERIFY ALL DETAILS AND CORRECT AND REPORT ANY AND ALL DISCREPANCIES TO TOLAR MFG. BEFORE COMMENCING WITH THE RELATED PORTION OF THE WORK.		<b>TOLAR MANUFACTURING COMPANY, INC.</b> 258 Marsh Creek, Corona, CA, 92619	
DESCRIPTION	21'NAGSIFORMSOLAR	PAGE	1 of 1
CUSTOMER/VERSION	LONGMONT, CO	DWG NO.	45544-00
SIZE	D	REV.	-
DATE	01/12/2022	DRAWN BY	RFair

# Colorado 119 BRT Project

# Shelter Type (Proposed)



- Shelter Type can be streamlined for other BRT corridors



NOT FOR  
CONSTRUCTION  
FIR SUBMITTAL  
30%  
08/05/2022

All seals for this set of drawings are applied to the cover page(s)	Print Date: 8/4/2022 File Name: C:\PC06-Detals.dwg	<b>Sheet Revisions</b> Date:    Comments:    Init.:		Colorado Department of Transportation 1050 Lee Hill Road Boulder, CO 80302 Phone: 303-546-5676 FAX: 303-444-0751	As Constructed No Revisions: Revised: Void:	CO119 MOBILITY RTD PARK-n-RIDES DETAILS		Project No./Code 21497
		Region 4 ALG	Designer: FBT Detailer: FBT Sheet Subset: RTD			Structure: FBT Numbers: Subset Sheets: 6 of 16	Sheet Number C-006	

# Colorado 119 BRT Project

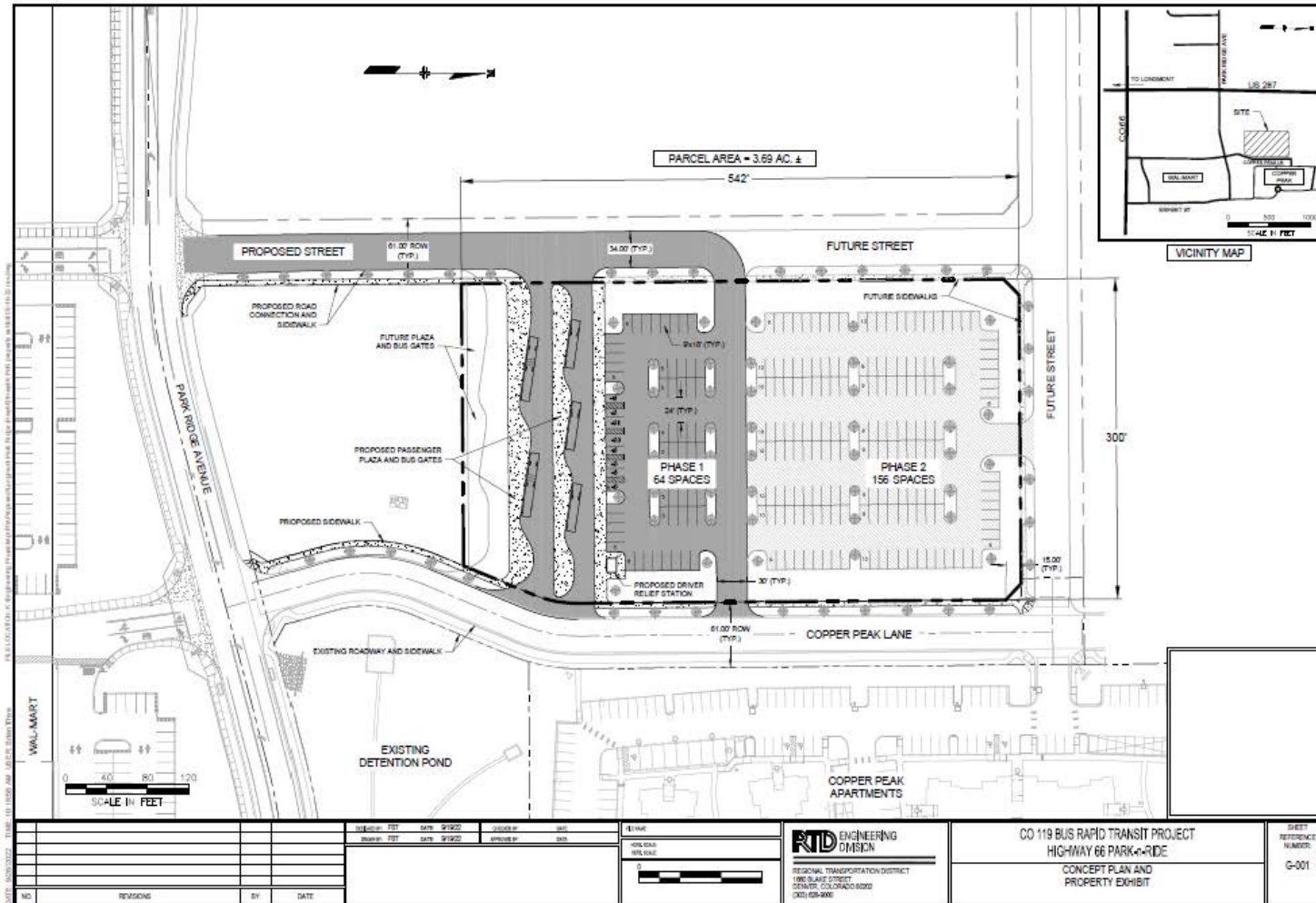
## Station Updates



# Colorado 119 BRT Project

# Station Updates

## Hwy 66 & US 287 PnR (DRAFT Design)



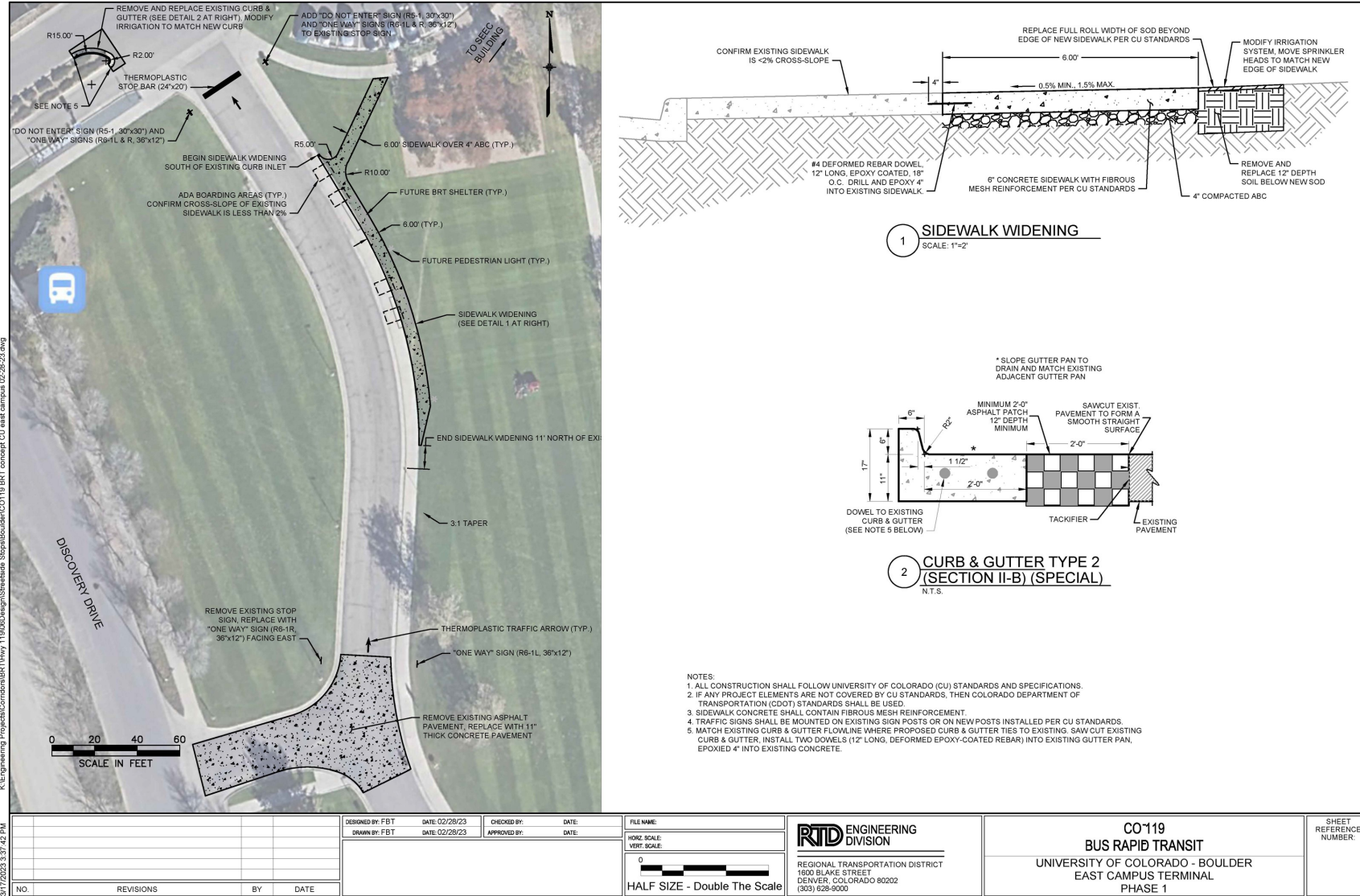
- Funded via CO 119 BRT project (w/in \$33 mil)
- 2 phase build approach
- 5 gates
  - Local and Regional Routes
- Allow other transit providers to access for connections
  - FLEX
  - CDOT

# Colorado 119 BRT Project

# Station Updates

## CU East Campus Terminal (DRAFT Design)

- To be constructed with overall corridor
- Coordinated with CU Boulder
- Will allow connections between CO 119 BRT and CU Buff Transit
  - Shared stop

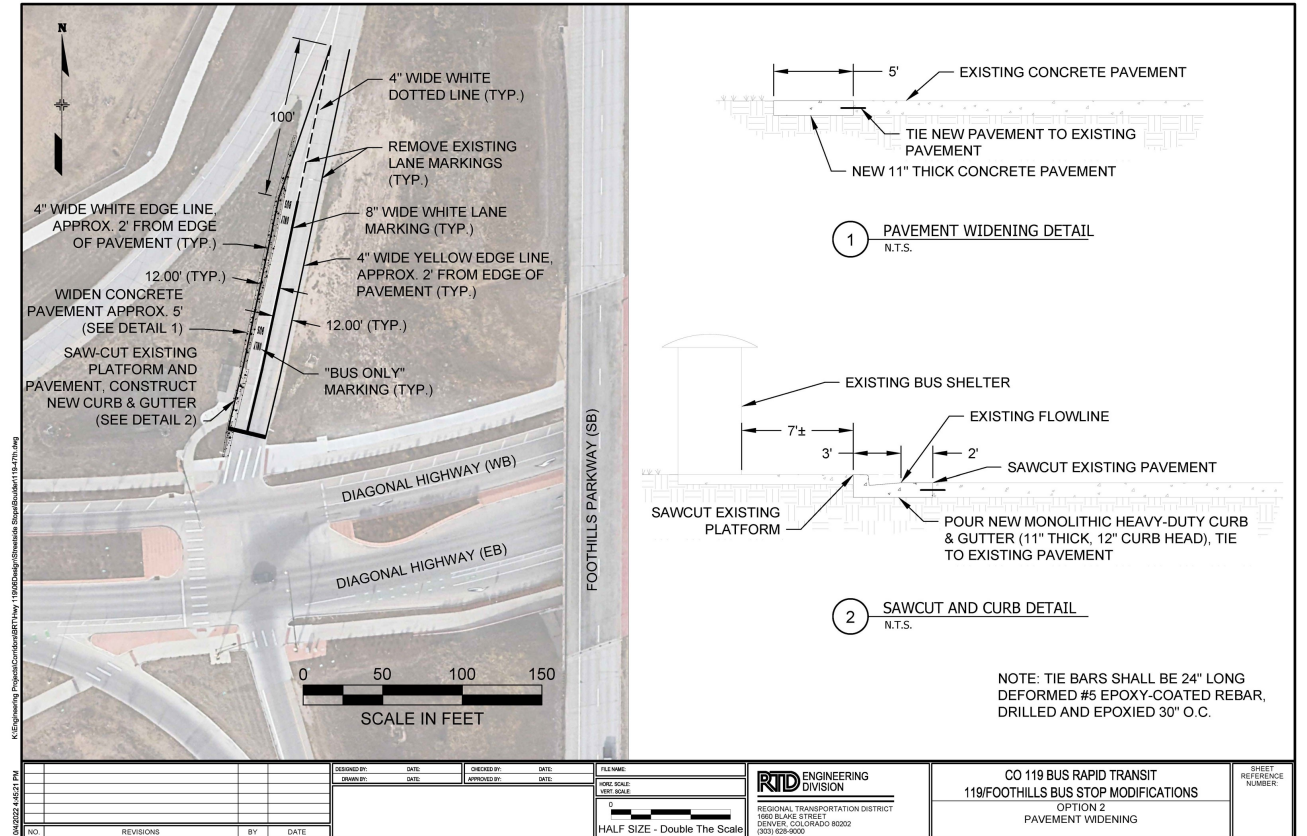
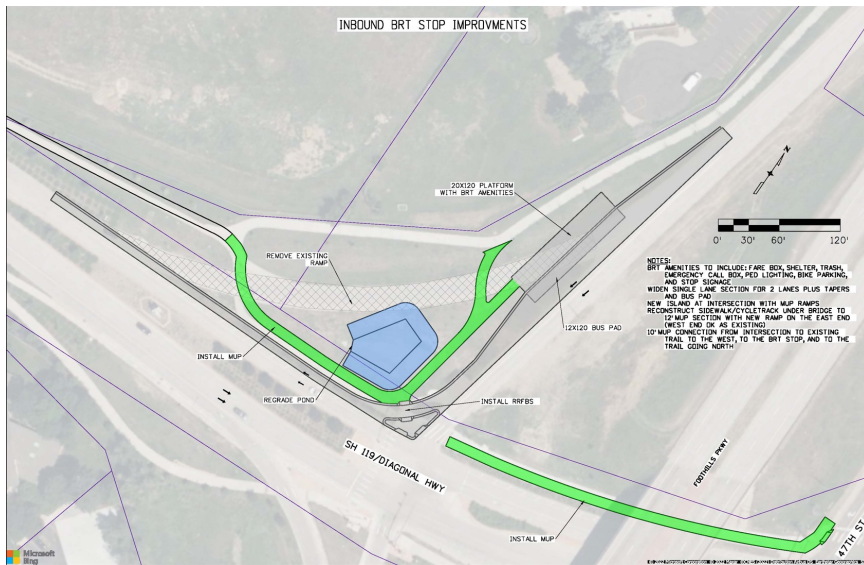


# Colorado 119 BRT Project

- 47<sup>th</sup>/ Foothills SB/WB stop was not included in PEL
- Will be added with overall project
  - Coordinate with CDOT Safety and Mobility Project

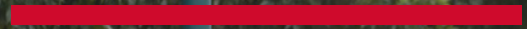
# Station Updates

## 47<sup>th</sup>/ Foothills SB/WB (DRAFT Design)

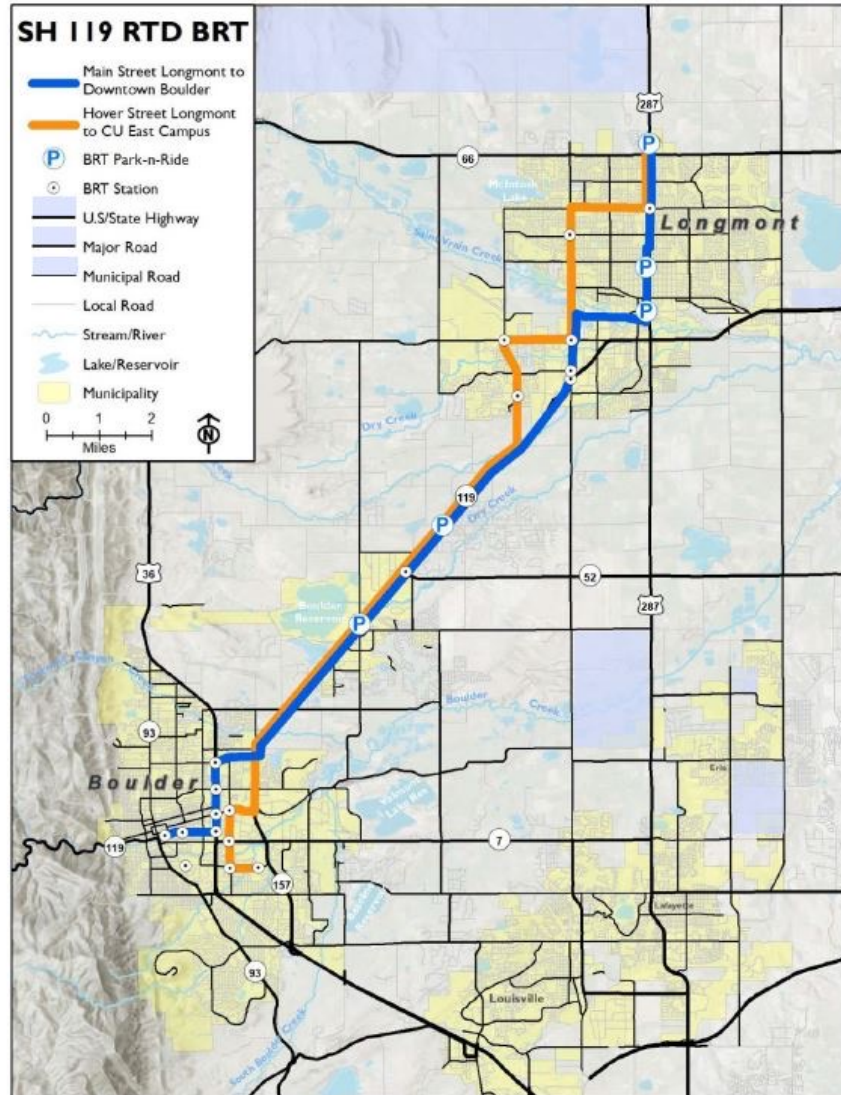


# Colorado 119 BRT Project

# System Analysis (Draft Scope)



# Colorado 119 BRT Project



August 8, 2023

## System Analysis (Draft Scope)

### PEL Route Patterns (Proposed)

- **BLUE** pattern
  - MAIN pattern
  - Park Ridge/Main (US287) to Downtown Boulder Station
  - Weekday: 30 min All-Day bi-directional frequency
  - Saturday/Sunday/Holiday: 60 min All-Day bi-directional frequency
- **ORANGE** pattern
  - PEAK pattern
  - Park Ridge/US287 to CU East Campus via Hover/Airport/Foothills/30<sup>th</sup>
  - Weekday: 30 min peak bi-directional frequency



# Colorado 119 BRT Project

## System Analysis (Draft Scope)

### Service Pattern Technical Study

- Purpose and Need

### Key Scope Items

- Market Assessment
- Identify and Confirm potential Alternatives
- Travel Time Analysis
- Service Evaluation, including resource requirements
- Recommendations and phasing



# Colorado 119 BRT Project

## System Analysis (Draft Scope)

### Service Pattern Technical Study

- **Project Coordination**
  - **City of Boulder and RTD to co-manage**
  - Technical Stakeholder Representatives
    - CU Boulder
    - City of Longmont
    - Boulder County
  - City to fund and procure professional consultant services
    - Nelson Nygaard
    - **\$50k limited scope technical study**
- **Timeline**
  - Finalize Contract
  - System Analysis
  - Finalize Analysis
    - Provide suggested alternatives based on study findings



# Colorado 119 BRT Project

# Wayfinding Brand Identity



RTD



# Colorado 119 BRT Project

- The CO 119 wayfinding brand will closely coordinate with the existing Flatiron Flyer brand identity
- A signage plan will be developed and will include wayfinding signage for each jurisdiction directing customers to:
- Commuter bikeways
  - Transit stations
  - Park & Rides
  - Connections to/from adjacent land uses
- The project will include outreach to gather feedback from corridor stakeholders and the general public.

# Wayfinding Brand Identity



*Photo by Emily Levine on Unsplash*