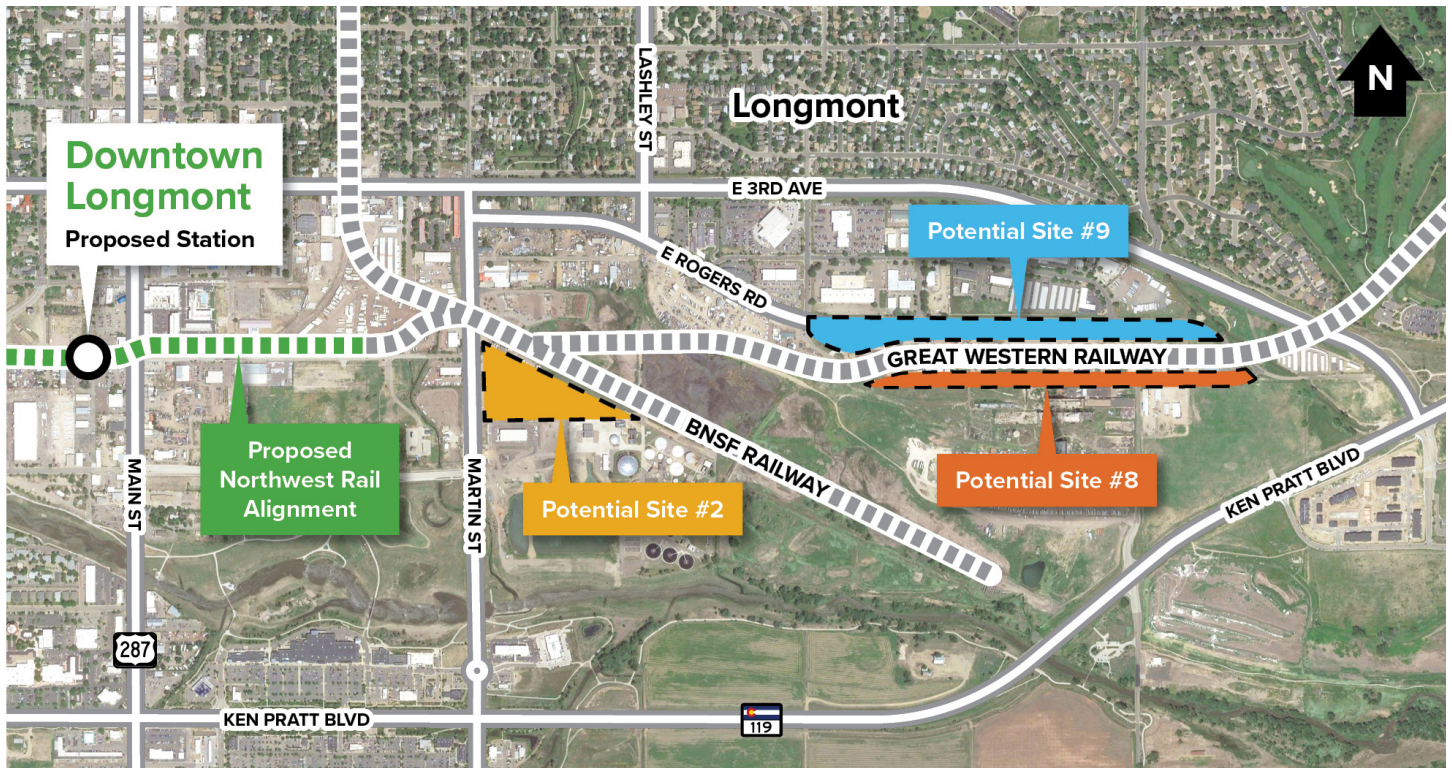


Proposed Northwest Rail Maintenance Facility



As part of the Northwest Rail Peak Service Study, RTD is evaluating potential sites near the proposed Downtown Longmont station for a future commuter rail maintenance facility. The maintenance facility would clean, maintain, fuel, and repair commuter trains. When not in service, trains would be stored at this facility. The maintenance facility is vital for bringing sustainable and reliable commuter rail service to northwest area communities.

Background

RTD initially identified nine potential sites. Six sites were eliminated through a screening process that considered constructability, planned development, and environmental impacts. Three potential sites remain for further study:

Potential Site #2

East of Martin Street, south of BNSF Railway tracks, and north of Longmont's Wastewater Treatment Plant

Potential Site #8

North of Sugar Mill Road and south of the Great Western Railway tracks

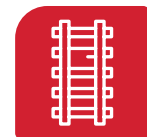
Potential Site #9

North of the Great Western Railway tracks and south of East Rogers Road

Why these sites?



In close proximity to the proposed end-of-line Downtown Longmont Station

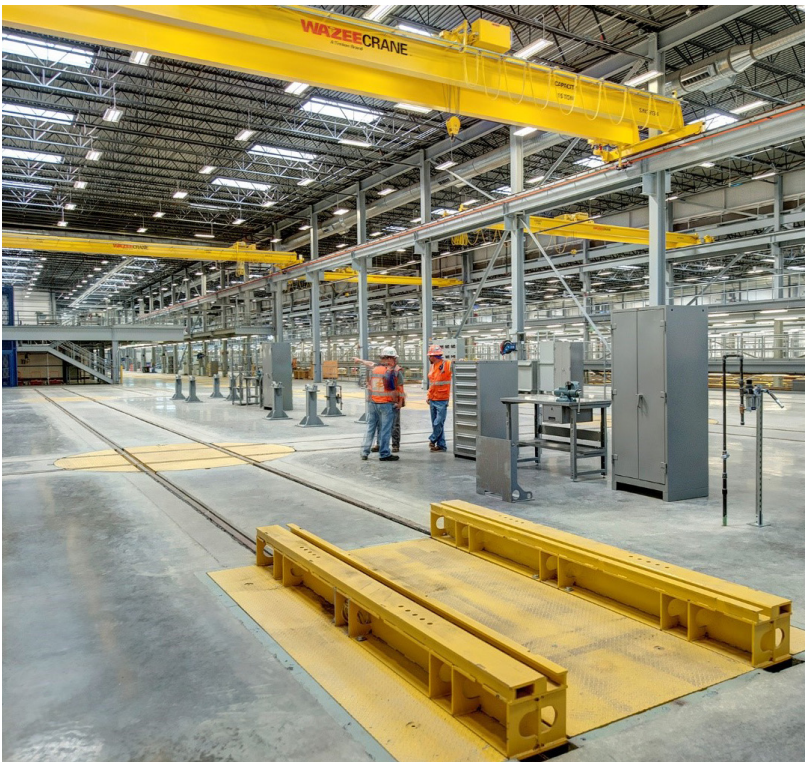


Border an existing rail track that can connect to proposed Northwest Rail tracks



Large enough for a rail maintenance facility with space to support all-day rail service in the future

THE COMMUTER RAIL FACILITY IN DENVER'S GLOBEVILLE NEIGHBORHOOD (SEE IMAGES BELOW) IS SIMILAR TO THE FACILITY NEEDED TO SUPPORT NORTHWEST RAIL.



AT THIS TIME, THERE ARE NO APPROVED PLANS TO ACQUIRE PROPERTY OR CONSTRUCT THE MAINTENANCE FACILITY.



Maintenance Facility evaluation is part of the Northwest Rail Peak Service Study, which is identifying the cost and operational requirements to implement peak period commuter rail service from Denver to Longmont.



Study findings and recommendations will inform next steps for the proposed maintenance facility.

RTD WANTS TO HEAR FROM NEIGHBORS AS POTENTIAL SITE LOCATIONS ARE EVALUATED FOR THE COMMUTER RAIL MAINTENANCE FACILITY.

Visit the Study website to learn about opportunities to join the conversation!



 rtd-denver.com/projects/northwest-rail-peak-service-study

 720.881.0778

 NorthwestRail@hdrinc.com

SCAN TO LEARN MORE

