



RUAPEHU COLLEGE

RAPUHIA KOTE MATAURANGA :
SEEK FURTHER KNOWLEDGE

THE STORY BEHIND

RUAPEHU COLLEGE

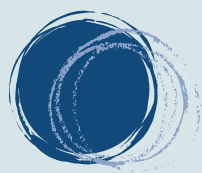
Ruapehu College was established in 1955, centered at the foot of Mount Ruapehu and surrounded by the Dual Heritage Tongariro National Park. Ruapehu College prides itself in taking full advantage of our wonderful natural resources to enhance and support our curriculum in and out of the classroom.

Our college community is drawn from five areas, Ohakune, Raetihi, Waiouru, National Park and the rural hinterland.

With a consistent roll of approximately 200 students this ensures everyone is included and learning achievements are drawn for each students needs, passions and interests.

Our school is an environment where our young people are able to grow, learn and are encouraged to achieve in the classroom combined with sporting and cultural activities.





MESSAGE FROM OUR PRINCIPAL

At Ruapehu College we aim to empower young people through education, gifting them the skills and values to succeed in an ever changing world.

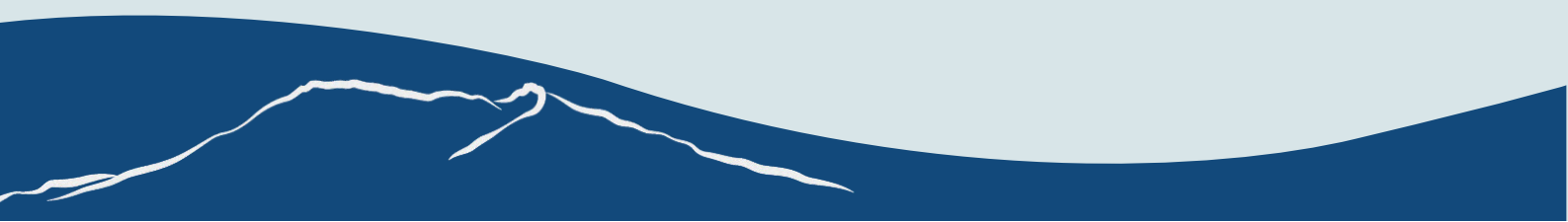
As a boutique college of 250 students, we offer small class-sizes with personalized teaching by a team of subject-specialist educators, and a designated academic mentor that journeys alongside their students from year 9 to 13. Students' learning programs are tailored to meet their interests and strengths, proposed career pathways with the opportunity to do industry courses, gateway industry-placements, scholarship examinations, and tertiary study. This is one of the reasons why our students consistently do well in achieving NCEA across all levels.

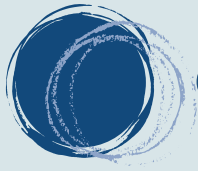
Our teachers are passionate, and committed to give each learner their very best, building relationships grounded upon respect. Teachers are led by a dedicated pedagogical team that focuses continually on improving teacher practice of teaching and learning through ongoing professional development, and real-life observations where it matters most, in the classroom. We invest in this heavily because this is our core business. In the pursuit of excellence, 'each one counts'. This means each person, each day, each lesson, each action, and each and every opportunity - they all matter.

The culture of the college is founded upon a rich heritage of respect and care. The college has taught many whānau across successive generations, alumni return, and all contribute to the call whenever the college has a need. This is done freely because all who come to this college know that their place is just as important as it's always been. Students gain this same sense of belonging that becomes lifelong, just as their learning is.

We are confident our young people will be well equipped for whatever industry they wish to pursue and will be amongst the movers and shakers for a better world for tomorrow.

Principal, Marama Allen





OUR VALUES, OUR VISION



Pride and Respect

Ruapehu College students are encouraged to take pride in our school, its traditions and achievements of all past and present students. This means respecting others and their right to learn and achieve to their full potential, whether that be inside or outside the classroom. We expect staff and students to be sincere and show respect for each other, our property and the schools reputation. Students will be encouraged to value honesty, responsibility and accountability. All have a right to enjoy their years here. Restorative Practices ensure that all Ruapehu College students have experiences which are positive, fulfilling and rewarding.

Our Vision

Achievement is the primary focus at Ruapehu College. All Students are encouraged to believe in their own ability, to lift their sights and capacity of achievement. Developing this potential so that our students achieve the very best of their ability, is the driving force at our school.

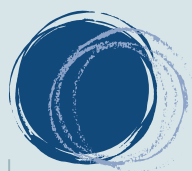
A culture of continuous school improvement exists, where achievement - broadly covering academic, extra-curricular and social - is emphasized.

Our curriculum is vast, designed to meet diverse needs of our school community. Ruapehu College is committed to the delivery of the curriculum as outlined in the New Zealand Curriculum.

A close partnership with the local Iwi has been forged through the involvement in Te Kakahu. Ongoing development and support has seen this grow and extend its way into our curriculum as we continue to reflect and challenge our assumption and practices.

*In pursuit of excellence
each one counts*





JUNIOR CURRICULUM FOR EXCELLENCE

The Ruapehu College Junior curriculum provides the students with a well balanced Academic, Cultural and Sporting experience using the framework of the New Zealand Curriculum. The main aim of the curriculum is to recognise and celebrate the multi-intelligences of our diverse student population and allow them to develop these in innovative and relevant ways. A Blended learning approach across all subject areas enables the students to see relevance and make connections across the curriculum.

Tasters

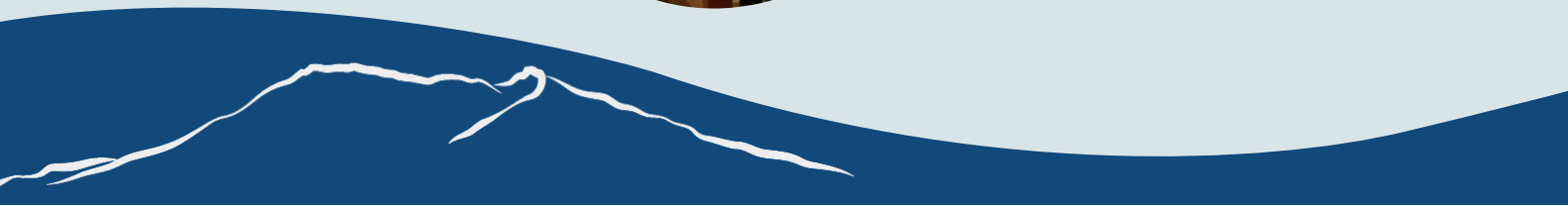
- Design and Innovation - Food Technology
- Design and Innovation - Resistant Materials Technology
- Design and Innovation - Textiles Technology
- Te Reo Maori
- Maori Performing Art
- Agriculture/Horticulture
- Performing Arts
- Visual Arts

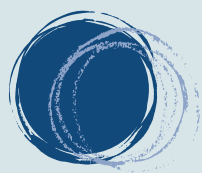
Core Subjects

- English
- Mathematics
- Science
- Social Studies
- Physical Education & Health
- Digital Technology

Focus:

- Values and learning behaviours through our Junior Diploma
- Development of Key Competencies
- Numeracy
- Literacy
- A foundation of fundamental Knowledge and skills
- Mixed ability, differentiated teaching and learning
- Thinking and problem solving and the development of higher order thinking skills
- Development of resilience and grit through a Growth Mind-set and Habits of the Mind approach





SENIOR CURRICULUM FOR EXCELLENCE

The Ruapehu College senior school curriculum is based on the New Zealand Curriculum and is tailored towards students succeeding in NCEA (National Certificate of Educational Achievement).

A “typical” senior student course is composed of 6 subject choices. At Level 1, this includes three compulsory subjects, English, Mathematics and Science, with the remaining three subjects being selected from, The Arts, Technologies, Social Sciences, Languages or Physical Education/Health domains.

At Level 2, students are encouraged to continue with English and a Mathematical subject along with four other options.

At Level 3, students are able to select up to 6 option subjects of their choosing.

Vocational opportunities, Gateway, and Star taster programmes.

The College offers a number of opportunities in the senior school for students who wish to pursue trade related career options. The Gateway programme, available to students in Years 12 and 13, offers students the opportunity to gain ‘on the job’ experience while gaining credits towards trade qualifications.

Star short courses are offered to students in Year 11-13 which gives the opportunity to gain skills and qualifications not traditionally offered through the school curriculum.

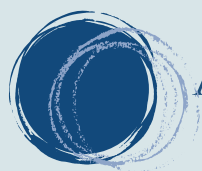
OLC (Online Learning Centre)

Being smaller college, it is not always possible to offer all the subjects students wish to take on site. However being a member of the OLC which is a group of schools providing a huge range of subjects via a distance learning model and video conferencing.

NCEA Pilot

Ruapehu College is currently at the cutting edge of the new NCEA curriculum development. Piloting the new standards in Mathematics, Science, Digital Technology, Geography, Design and Visual Communication and Music, as well as the new Literacy and Numeracy unit standards. This is a great opportunity for the college affording our staff the support and professional development that will ensure they hit the ground running when the new NCEA is rolled out nationally in 2024.

2021	NCEA L1	NCEA L2	NCEA L3	UE
Ruapehu College	75.0%	76.5%	71.4%	42.9%
National Standard	69.2%	77.9%	70.5%	51.9%
Decile 2	58.7%	68.4%	62.5%	28.7%



ARTS, DESIGN & CULTURE

Our school is incredibly proud to offer a broad range of opportunities in The Arts. Studying Performing Arts, students are able to participate in stage productions, Smokefree Rockquests, composition competitions and a range of live events. Our indigenous culture is also embedded in our curriculum. Maori Performing Arts is a subject in itself, complemented by Te Reo Maori language studies. Kapa Haka reaches stages not only locally but competing at Pae Rangatahi too. Our Visual Arts department host courses in many disciplines including Painting and Printmaking, Sculpture and Design, Photography and Graphics. Students are encouraged to explore all methods guided and supported by our passionate staff. Our school has had great success with students achieving. Like many of our courses we are eager to extend our range of disciplines



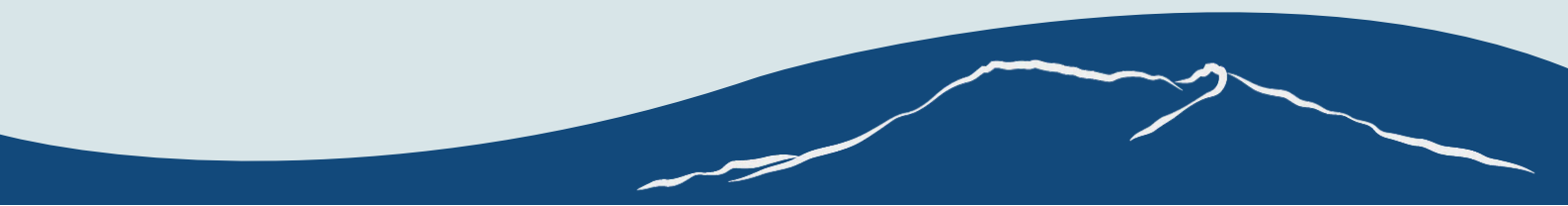
HUMANITIES & SOCIAL STUDIES



At Ruapehu College, we endeavor to provide students with various Social Sciences learning opportunities based on the past, present and future. Context is drawn from New Zealand and abroad, and when possible, the local sphere. In the Junior School, students explore concepts and events relating to society and communities and how they function. Students come to understand the relationships that exist between people and the environment and the ways in which people participate in economic activities as consumers and producers of goods and services. Finally, students take a balanced journey through New Zealand history, appreciating the concepts of continuity and change.

In the Senior School, students have the chance to further their understanding by taking Geography as an NCEA subject. To ensure a balance of human and physical Geography, which is concerned with the environment as the home of people, students explore a range of contemporary geographic issues and topics such as the affordable housing crisis; the cost of living crisis; the geography of crime; event planning; megacities; population distribution and change; disaster and evacuation planning; digital mapping and spatial analysis; geographic research; and natural and cultural processes.

The goal of Social Sciences is to equip students with the conceptual understanding, ability and skills to permit them to make sense of the complex world around them, empowering them to respond to and participate in it in a meaningful way



SPORTS & OUTDOOR EDUCATION

Ruapehu College has a long standing success in all aspects with many of our students going on to represent on national and international stages. The dedication put in by staff, volunteers and most importantly students is seen on these sporting stages. From team sports to individual challenges we make the very most of our back yard.

- Rugby
- Football
- Snow Sports
- Basketball
- Athletics
- Netball
- Equestrian
- Motocross
- Badminton
- Cricket
- Touch Rugby
- Waka ama
- Volleyball
- Tramping
- Ki o Rahi
- Mountain Biking
- Squash

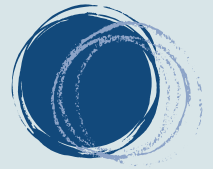
Whanau sports are great team building events and a way for whole school inclusion which also includes our Yr 13 students competing against our staff. Other sports opportunities include events throughout the North Island and New Zealand and we look to grow and explore further sporting codes.



DUKE OF EDINBURGH INTERNATIONAL AWARD

Not all learning happens in the classroom. Young people need experiences outside the classroom to become committed, responsible and fulfilled citizens of the world. This award is the world's leading youth achievement award. Doing the award is a personal challenge and not a competition against others; it pushes young people to their personal limits and recognizes their achievements. Ruapehu College students are invited to take up the opportunity to do this award. It is offered to all students age 14+. The award is recognised by tertiary institutions and employers all over the world as evidence of teamwork, individual resilience, reliability and skill. It is an opportunity to have fun with friends, build up skills and experience, help your community and explore the amazing environment around you.

GATEWAY & STAR - VOCATIONAL PATHWAYS



This area of the school curriculum works closely between students, employers and tertiary education providers to ensure learners succeed in both their education and the transition into the workplace. The vocational pathways set up for students in these programmes ensure that the subjects, skills and work experience gained are relevant to their intended future qualification or employment.

Gateway

Funded by the Tertiary Education Commission (TEC), Gateway builds the link between school and the employment sector. Tailored programmes specific to each student incorporate NCEA credits and unpaid work experience in an area of potential future employment. A Gateway programme, is a minimum of 100 hours and approx. 20 NCEA credits. The programme involves, one day a week (usually) for a minimum of 10 weeks in a workplace and theory study during school hours. The Ruapehu College Gateway programme is offered to students in Years 11-13 involved in NCEA Level 1, 2 & 3. Places are limited and dependent on attendance, attitude and aptitude. Many Gateway programmes involve credits that can be used towards a qualification or apprenticeship in the future. Examples of employment sectors that have featured in the Gateway programmes at the college include: Building, Mechanic, Hair & Beauty, Level 1 Ski Instructor, Landscaping/ Contracting, Retail, Agriculture, Horticulture and Apiculture.

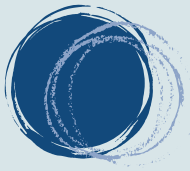
STAR

Ruapehu College runs STAR funded programmes throughout the year in various areas of the curriculum. The STAR courses are short 2-3 day sessions which teach students practical skills and gain NCEA credits. Students are trained and complete assessments based on skills that can be utilised in the workplace or to assist them in securing employment. Examples of some of the STAR courses run at Ruapehu College include Barista training, Team BBQ (Food Safety), Predator Control, Basic First Aid, Outdoor First Aid, Fencing, Forklift, Quad Bike Training.

Careers

The Careers office at Ruapehu College has a vast amount of information on career pathways available. Students are welcome to discuss career thoughts and ideas at any time. Career planning is an essential tool if considering tertiary education, an industry placement, apprenticeship or future employment. Students are also encouraged and helped with CV's and cover letters for applications for part-time work, tertiary study, leadership programmes eg. Blake Inspire and School to Skies. Careers talks and day trips are a regular feature at the College both from employers, industry and tertiary study providers. Evidence shows that students who identify with regional or rural backgrounds are more likely to return to work in these areas. There is a lot of support available for students from rural areas who wish to pursue career pathways which will be beneficial to their communities. Examples of careers events at Ruapehu College include: Defence, Connexis, Massey, Pharmacy, Rural Health Careers, Careers Expo, Music, Girls with High Vis and GRIP Leadership.





DISTANCE & ONLINE LEARNING

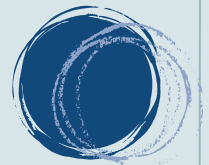
Ruapehu College is a member of the Online Learning Community (OLC) and has a dual school arrangement with Te Kura. Both of these education providers enable our students to take a subject which is not offered internally at the college, ensuring that the College can provide a wide range of subjects for our learners.

Students that have enrolled in a subject with the OLC will have an online classroom and meet with their class and teacher, via zoom, at a set time each week and complete the work required during timetabled study periods.. This type of learning not only fosters independent learning and essential communication skills within the student, students also get to meet and work with like minded learners from other schools.

Te Kura is a distance education provider that offers our students subjects not catered for internally, as well as for those students meeting certain learning criteria.. Students will choose a subject, or modules within a subject, to work on at their own pace. They are required to submit work every month to ensure continuation of the course. All of the learning content is provided online and teacher contact and feedback is sent as the student progresses through the course. In some cases, paper based work will be sent.

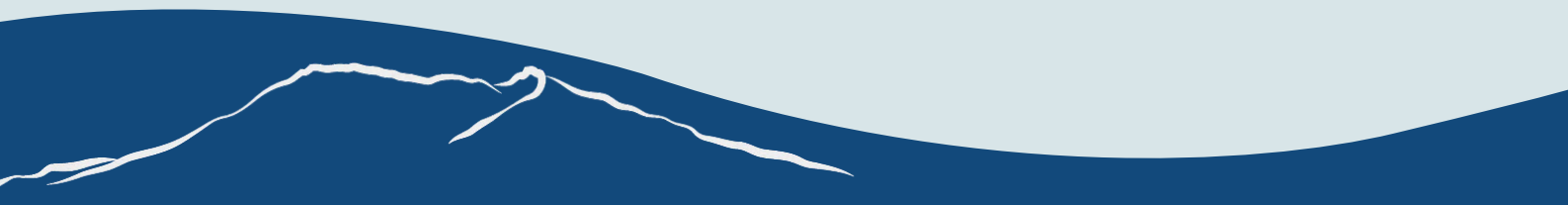
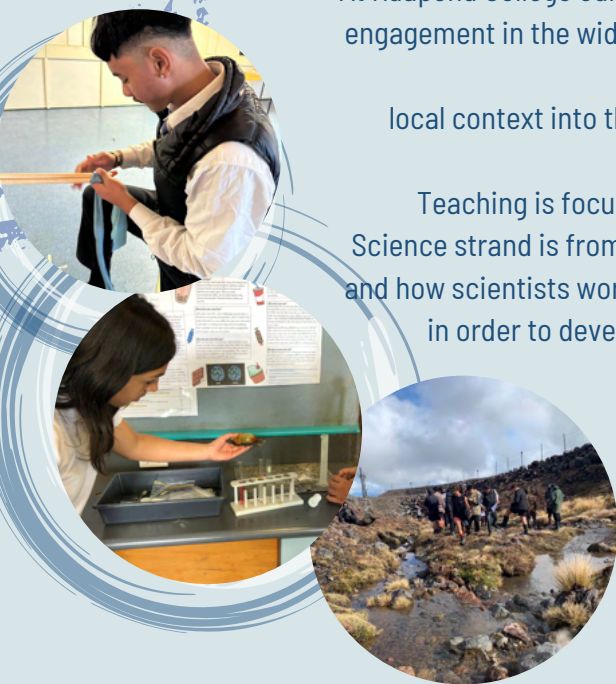


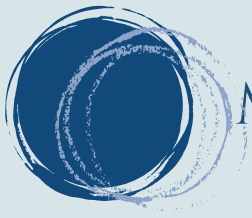
SCIENCES



At Ruapehu College our objective is to enhance our science programmes to encourage students engagement in the wider school community to better develop students' knowledge and skills in science. We are implementing local context into the curriculum including field trips that help students understand science beyond the classroom.

Teaching is focused on science capabilities through the Nature of Science. The Nature of Science strand is from The New Zealand Curriculum. It is used to teach ākonga what science is and how scientists work. Science involves generating and testing ideas and gathering evidence in order to develop knowledge, understand it, and explain it. Scientists do this by making observations, carrying out investigations and modeling, and communicating and debating with others.





MEET OUR TEACHERS

Amber Bergman, Digital



My family and I have recently moved into the Ohakune region and I am lucky enough to have been offered a job teaching Digital Technology at Ruapehu College. Having previously taught at a large secondary school in the Waikato; I am really enjoying the small, whanau based approach that underpins Ruapehu College. As I settle into my role here, I have enjoyed getting to know the students and developing units of learning that expose students to the wide range of possibilities within the Digital Technology area. I hope to continue supporting students to develop practical digital skills that can be utilised in any future pathways.

When not teaching you will find me spending time with my two daughters, skiing, tramping and enjoying the beautiful outdoors that the Ruapehu region has to offer.

Fleur Loram, English

Originally from Johannesburg, South Africa, I have travelled extensively teaching English.

Once considering Japan, Hong Kong and South America home. I arrived in New Zealand in 2020 (what a time to migrate!) and moved to Ohakune after three years in Southland, Gore.

My son and I love Ohakune and the diverse community.

I get rather excited and passionate about Literature, social anthropology, hot beverages, and the oxford comma.



Tamzyn Paewai-Te Riaki, Teacher



*Ko Matua te Tapu, Ko Maungarake ngā maunga
Ko Waingongoro, Ko Ruamahanga ngā awa
Ko Aotea, Ko Takitimu ngā waka
Ko Ngāruahine, Ko Ngati Kahungunu ngā iwi
Ko Mawhitiwhiti, Ko Hurunui-o-Rangi ngā marae
Ko Kanihi te hapū i te taha o tōku Pāpā
Ko Hiko Journey Te Riaki tōku hoa tāne
Ko Waata Te Piira Wai Whenua rātou ko Kanihi Tamou Faith ko
Tohumairangi Paewai ko Maranga Mauri Ora ko Ahirau Nuku āku tamariki
Ko Tamzyn Rosina Paewai - Te Riaki tōku ingoa*

I have recently begun teaching at Ruapehu College after teaching in primary schools for 14 years, and prior to that, in early childhood settings for three years. The teachers and staff at Ruapehu College are passionate, and dedicated, and work hard to provide rich and meaningful learning experiences for their students.





RUAPEHU COLLEGE
30 TAINUI STREET, OHAKUNE



OFFICE@RUAPEHU.SCHOOL.NZ



06 3858398



RUAPEHUCOLLEGE.SCHOOL.NZ



@RUAPEHUCOLLEGE