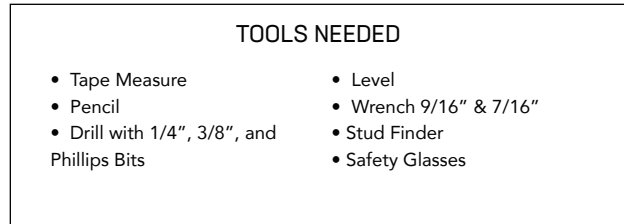
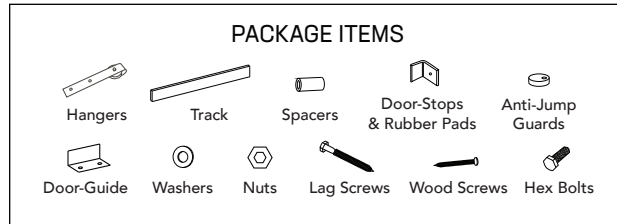


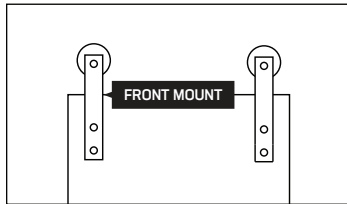


## INSTALLATION GUIDE / FRONT MOUNT SLIDING BARN DOOR HARDWARE

(Quantities vary on the size of track and number of doors ordered)



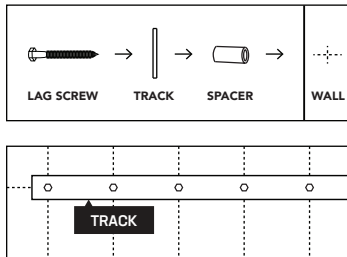
### ATTACH HANGERS TO DOOR



\*Hangers work with doors 1 1/4" - 2" thick.

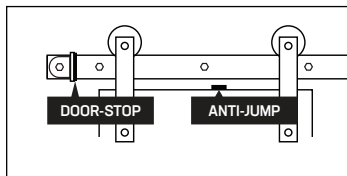
1. Place the hangers on the top front part of the door in from the sides of the door (we recommend 2" in from each side or centered in stiles) and measure from doortop to the bottom of wheels 2 3/8" for 2" tracks or 1 5/8" for 1 1/2" tracks.
2. Square the hangers and mark the holes.
3. Set the hangers aside and drill 3/8" holes through the door at the marked points. Remove wood debris and place the hangers back over the mounting holes.
4. Insert 2 1/4" hex bolts through the hangers and door and tighten with washers and nuts.

### ATTACH TRACK TO WALL



1. Determine the centerline height of the track by inserting the track into the hanger wheels and measuring from the bottom of the door to the center of the track, then add 3/4" for door-guide.
2. Locate and mark the studs at the track centerline height and drill 1/4" pilot holes at each marking.
3. Hold the track above the doorway in position and mark the stud locations on the track. Drill 3/8" holes through the center of the track at the marked points. Include holes 3/4" in from the ends of the track for the door-stops.
4. Hold the track up in position and place spacers between the track and the wall. Fasten lag screws through the track and spacer then tighten securely into studs. If applicable, attach Splice Kit to the back of the track.

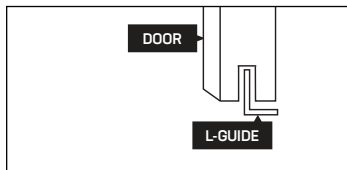
### ATTACH STOPS & GUARDS



\*Door-stops are placed at the ends of the track to prevent doors from leaving the track.

1. If needed, or to stop the door at another desired location, drill 3/8" holes into the track for door-stops. (we recommend 3/4" in from the ends of the track)
2. Place hex bolts through the door-stops then track, with the flags facing inward. Use washers and nuts to tighten. Apply rubber pads to inner face of the door-stops.
3. Hang the door onto the track and securely screw in anti-jump guards to the top of the door under the track.

### ATTACH DOOR-GUIDE



\*Doors must be in contact with door-guides at all sliding positions.

\*These instructions are for L-Bottom door-guides. See website for other styles of door-guide.

1. Place the door-guide on the floor central to the door range of motion in the 1/2" grooves along the bottom of the door.
2. Level the door swing and securely screw the door-guides into the floor.

**NEED HELP? CALL 801.698.2641 OR EMAIL US AT INFO@ARTISANHARDWARE.COM**

Warning! Choking Hazards. Packaging and hardware includes small parts that can cause choking or suffocation. Keep away from children. Failure to install this product correctly or improper use of tools could result in loss of control, serious injury, or death. Ensure you have complete control of tools at all times. Artisan Hardware is not responsible for any damages or harm caused by improper installation of products. Report damages or material shortages within 48 hours from delivery. Review all terms and conditions before installing products. Results can differ based on environmental circumstances. Use professional contractors who are trained to install this product. Use proper safety gear and follow industry regulations to get the best quality, security, and satisfaction. All hardware must have proper clearance and be securely attached into studs, solid blocking, head casing, full header, or other structural material that is built to bear weight requirements. Always follow industry safety standards and best practices. Every product is custom due to variations in doorway openings and structural factors.