



HX-7

Variable Dispersion Speaker



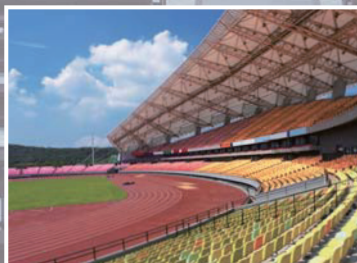
From a Whisper to a Scream

Introducing the all new HX-7 variable dispersion line array with SYNC-Drive™ waveguide technology. Thanks to its award winning enclosure design, employing four modules per unit, the HX-7 allows precise adjustment of sound dispersion angles of 0 - 15 - 30 and 45 degrees.

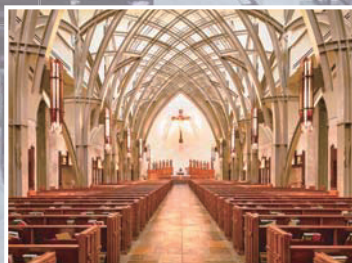
Offering pristine clarity in a wide range of applications from sports venues, auditoriums, concert hall and challenging houses of worship. With the HX-7 you're getting affordable quality and stellar performance. What you get is all that can be heard, from a whisper to a scream, TOA has it covered.



Application examples



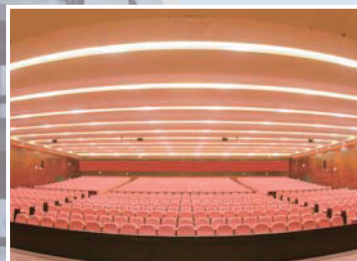
Stadiums



Houses of worship



Arenas/Indoor sports facilities



Auditoriums

Meets the need for powerful audio

- Power handling: 750W Continuous Program@8 ohms
- Sensitivity (1W,1m): 100 dB



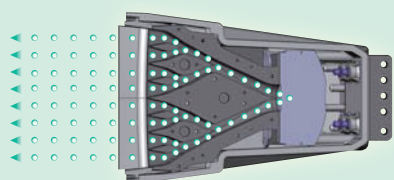
- 2 x 5.5" LF speakers.
- Waveguide loaded 1" HF compression driver.



- Design consists of four integrated speaker "cells" that can be adjusted to optimize the vertical dispersion angle.

Increases coverage and enhances intelligibility

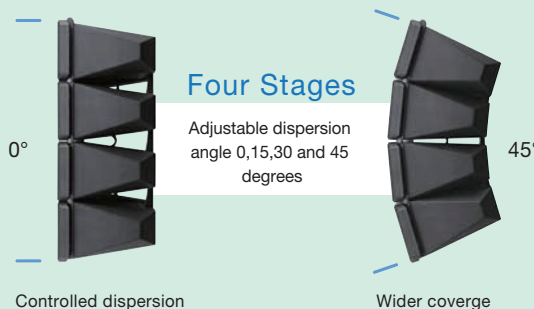
- Built-in isophasic wavefront control horn ensures precise HF control and superior reproduction of HF sounds.



High frequencies compression driver

- Newly added 0° mode facilitates the most effective line array set-up.

* 60° mode is also available with optional HY-60D brackets.



Four Stages

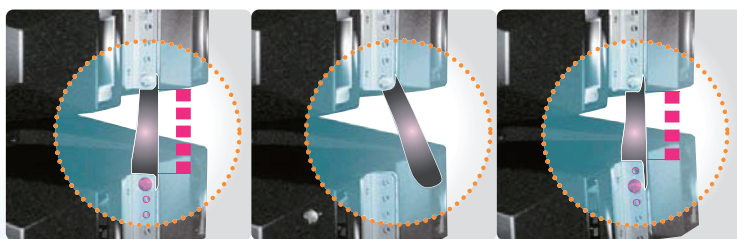
Adjustable dispersion angle 0,15,30 and 45 degrees

Controlled dispersion

Wider coverage

Offers ease of installation

- Easily adjustable vertical dispersion angle.



0° mode

15° mode

Multi unit configuration

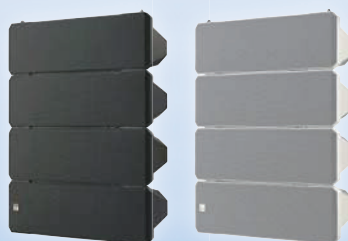
- Maximum four speaker units can be stacked.

* Make sure that 3 or 4-stacked HX-7 units are suspended from 3 or more hanging points. Please consult persons with the knowledge of proper hardware and safe rigging techniques.



Lineup of HX-7 Series

- High / mid-range unit
- Low-range unit



HX-7B/HX-7B-WP HX-7W/HX-7W-WP



FB-150B FB-150W

* "-WP" is weather-proof type.

More compact version - HX-5 Series

- Power handling: 600W Continuous Program@8 ohms
- Sensitivity (1W,1m): 96 dB @60°mode to 99 dB@15°mode
- Components: 4 x 4.72" cone-type LF drivers and 12 x 1" balanced dome tweeters
- Dimensions(WxHxD): 408 x 546 x 342 mm (16.1" x 21.5" x 13.5")



HX-5B/HX-5B-WP HX-5W/HX-5W-WP

Specifications

Optional Accessories

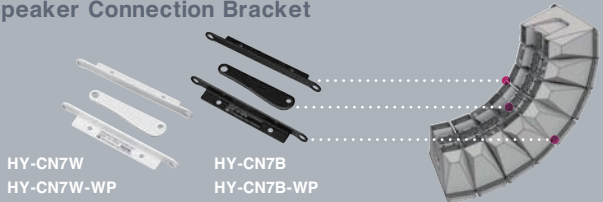
Speaker	HX-7B／HX-7W
Enclosure	Bass-reflex type
Power Handling Capacity	Continuous pink noise: 250 W (IEC60268-5: 350 W) Continuous program: 750 W
Rated Impedance	8 Ω
Sensitivity	100 dB (1 W, 1 m)
Frequency Response	75 Hz - 20 kHz
Crossover Frequency	1.7 kHz
Directivity Angle	Horizontal: 100° Vertical: Depending on directivity angle mode
Speaker Component	Low frequency: 13 cm (5.5") cone-type x 8 High frequency: Wave front control horn with compression driver x 4
Input Terminal	Speakon NL4MP x 2 and M4 screw terminal, distance between barriers: 9 mm (0.35")
Finish	Enclosure: Polypropylene, black or white (HX-7B/W) Punched net: Surface-treated steel plate, black or white (HX-7B/W), paint Hanging bracket: Steel plate, t3.0, black or white (HX-7B/W), paint
Dimensions	497 (W) x 664 (H) x 274 (D) mm (19.57" x 26.14" x 10.79")
Weight	30 kg (66.14 lb)
Accessory	Hanging bracket L, R (L and R are symmetrical to each other.) --1 each Hanging bracket mounting bolt --4
Option	Matching Transformer: MT-200 (*1) Matching transformer Adapter: HY-MT7 Speaker mounting bracket: HY-60DB/W, HY-CN7B/W, HY-PF7B/W HY-VM7B/W, HY-WM7B/W (*2), HY-C0801W (*2) Speaker stand adapter: HY-ST7

Speaker (Weather-proof)	HX-7B-WP／HX-7W-WP
Enclosure	Sealed type
Power Handling Capacity	Continuous pink noise: 250 W (IEC60268-5: 350 W) Continuous program: 750 W
Rated Impedance	8 Ω
Sensitivity	100 dB (1 W, 1 m)
Frequency Response	105 Hz - 20 kHz
Crossover Frequency	1.7 kHz
Directivity Angle	Horizontal: 100° Vertical: Depending on directivity angle mode
Speaker Component	Low frequency: 13 cm (5.5") cone-type x 8 High frequency: Wave front control horn with compression driver x 4
Input Terminal	M4 screw terminal, distance between barriers: 9 mm (0.35")
Water Protection	IPX4 (Install with every speaker module tilted downward from the horizontal.)
Finish	Enclosure: Polypropylene, black or white (HX-7B/W-WP) Punched net: Surface-treated steel plate, black & white (HX-7B/W-WP), rust proof coating
Dimensions	497 (W) x 664 (H) x 274 (D) mm (19.57" x 26.14" x 10.79")
Weight	30 kg (66.14 lb)
Accessory	Terminal cover --1, Terminal cover mounting screw --4 Rubber packing --1
Option	Matching Transformer: MT-200 (*1) Matching Transformer Adapter: HY-MT7 Speaker mounting bracket: HY-TM7B/W-WP, HY-MS7B/W-WP HY-60DB/W-WP, HY-CN7B/W-WP

Subwoofer	FB-150B／FB-150W
Power Handling Capacity	Continuous pink noise: 200 W Continuous program: 600 W
Impedance	8 Ω
Sensitivity	93 dB (1 W, 1 m)
Frequency Response	40 Hz - 400 Hz (-10 dB)
Speaker Component	38 cm (15") cone-type
Input Terminal	Speakon NL4MP x 2 and M5 screw terminal, distance between barriers: 12.2 mm (0.48")
Finish	Enclosure: MDF, black or white (FB-150B/W), urethane paint Punched net: Surface-treated steel plate, black & white (FB-150B/W), paint
Dimensions	505 (W) x 528 (H) x 477 (D) mm (19.88" x 20.79" x 19.17")
Weight	30 kg (66.14 lb)
Option	Speaker rigging frame: HY-PF7B/W

(*1) When mounting the MT-200 Matching Transformer to the speaker,
on optional HY-MT7 Matching Transformer Adapter is required.
(*2) HY-VM7B/W Speaker Mounting Bracket is separately required.

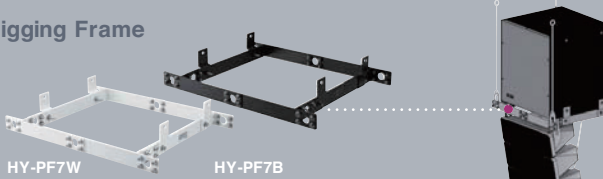
Speaker Connection Bracket



Angle Adjustment Bar



Rigging Frame



Rigging Bracket



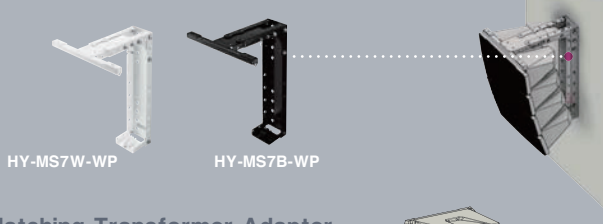
Wall Mounting Bracket



Rigging Bracket



Wall Mounting Bracket



Matching Transformer Adapter



Speaker Stand Adapter

