

Seattle Rep

Social Narrative

We look forward to your visit to a production at the Seattle Rep! Theatre is a fun way to experience a story. In these pages you will find things you will see at Seattle Rep.

SEATTLE
REP



SENSORY ACCESS
ACCESS FOR ALL



You are going to Seattle Rep to see a show. A theatre show is a way of experiencing a story. People move around on a stage and act out and speak the story. People on a stage that tell the story are called actors. Actors can tell the story through talking, singing and/or dancing. When actors only talk, it is called a play. When actors also sing and dance, it is called a musical. The actors will wear make-up and costumes, and might come close to you.



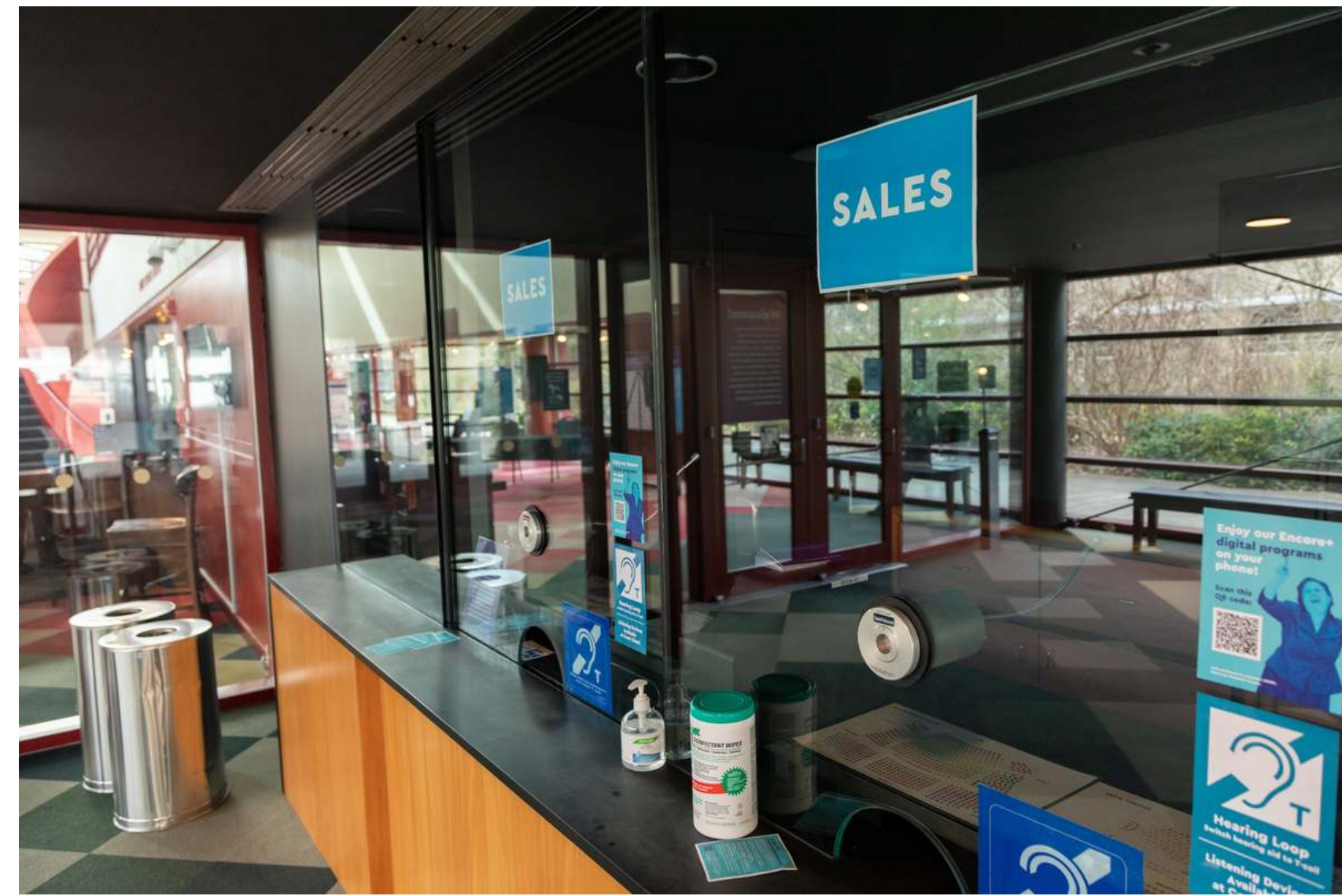
ENTRANCE

When you get to the theatre, you will walk in these red doors and show the person your ticket(s). During Covid precautions, someone will ask you for proof of your COVID vaccine or negative test before you enter the Theatre.



TICKETS/ENTRANCE

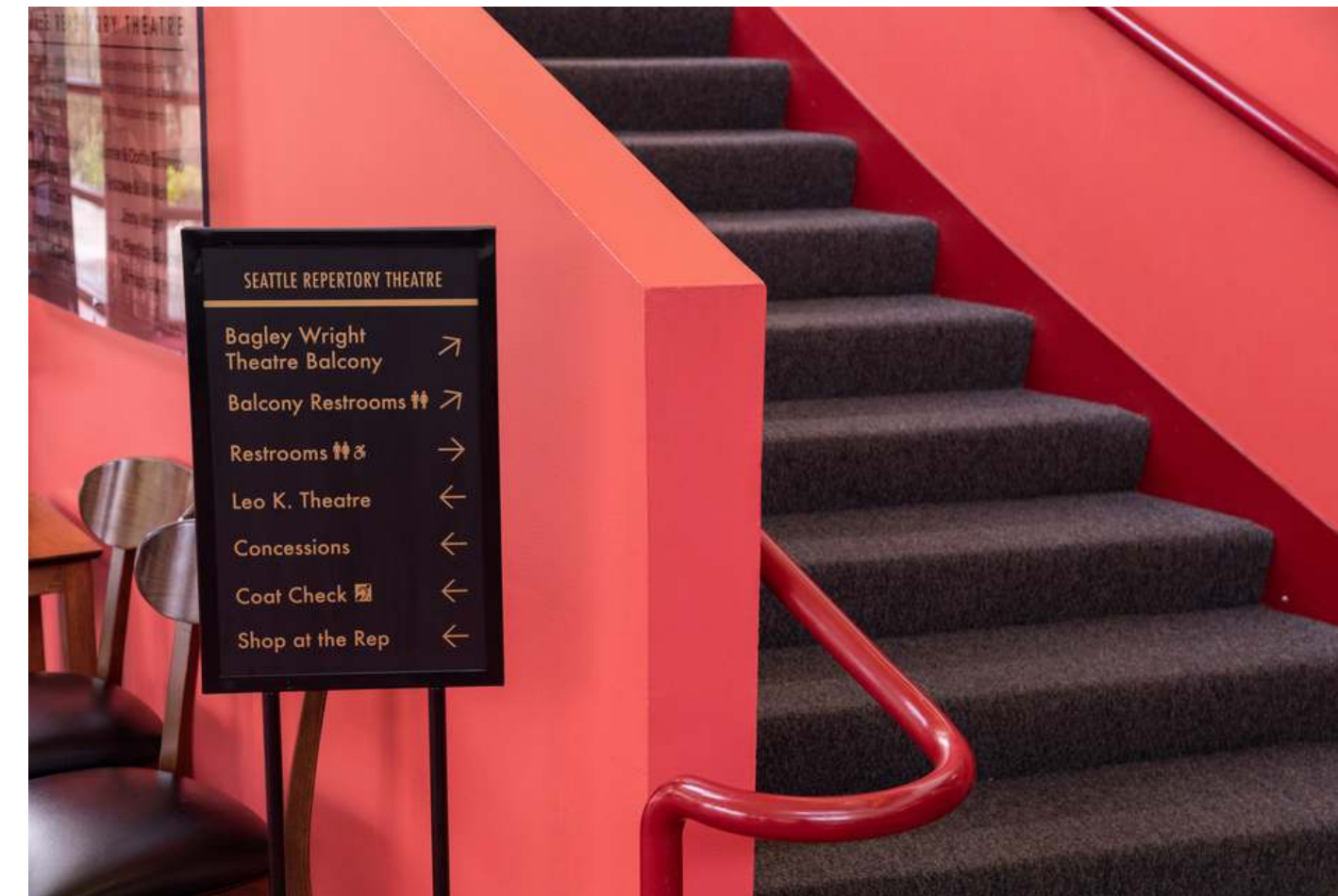
You will walk in and show the person your tickets. If you don't have the tickets yet, you will wait in line at the Box Office at the sign that says "Will Call". If there are still tickets for sale you can purchase them here as well, at the "Sales" window.



The Lobby

The Lobby is a big room where your family, you and other theater-goers wait for the show to begin.

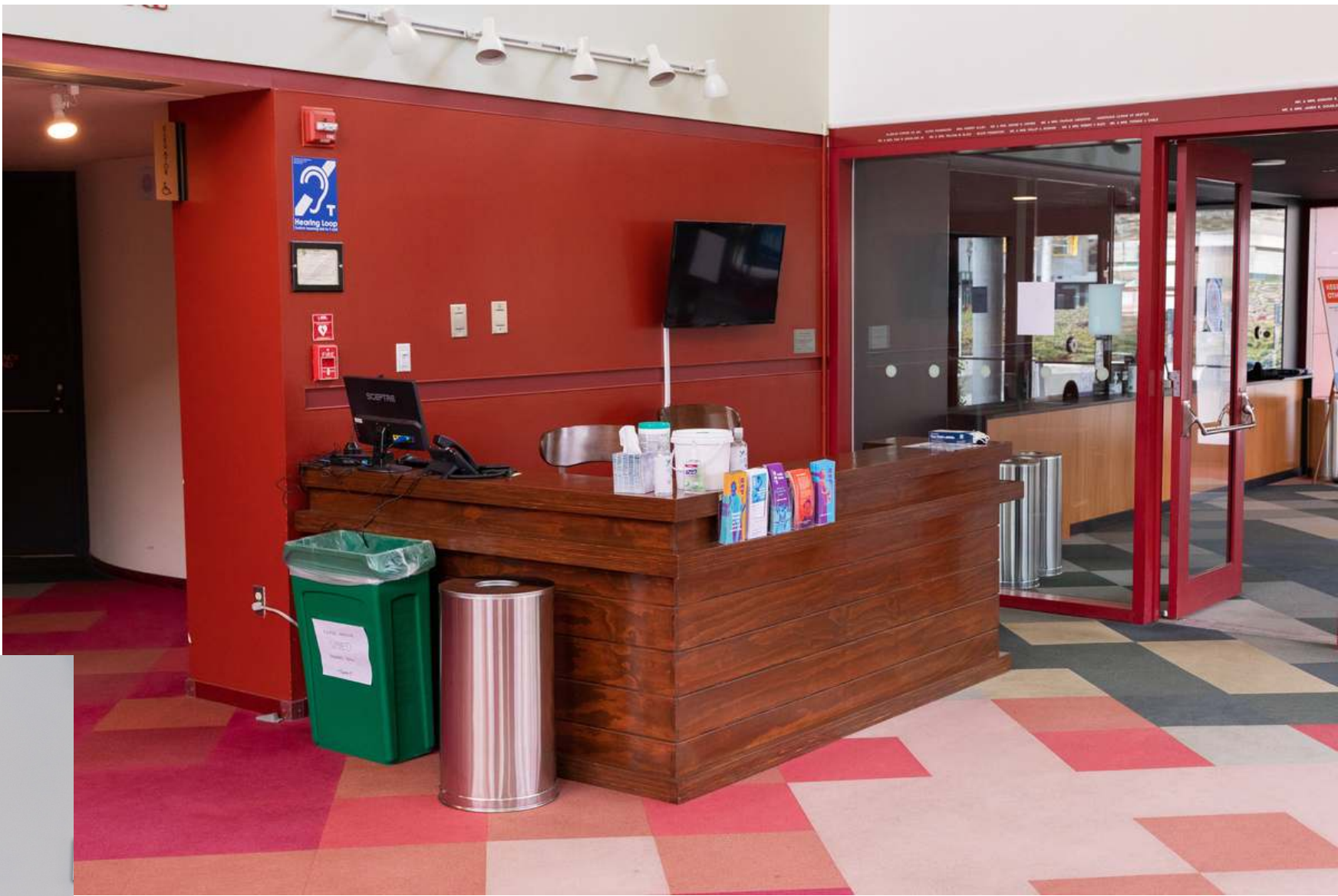
Everyone has to wait for the theatre doors to open. It can be very crowded and noisy here. You can tell your family that you need a quiet spot if it is too noisy. The lobby also has places that sell snacks, drinks and items from the show like shirts. Seattle Rep has multiple theatres and shows, so check your tickets to see which theatre your show is in.



Information Desk

The Information Desk is just inside the second set of doors, after the Box Office. Here you can ask questions, get directions, or check out a Sensory Kit!

If you are non-speaking, there is a Communication Card available at the desk.



SEATTLE REP

SENSORYACCESS

I need:

- Help
- Break
- Bathroom
- Less Noise

I am:

- Hungry
- Thirsty
- Tired
- Scared

- I Like
- I Love
- Too Bright
- Ticket

Sensory Kit

Sensory Kits are free to borrow and include:

- A Communication Card for non-speaking individuals
- Headphones/Ear Defenders
- Various kinds of fidgets
- A Sunflower Lanyard you can wear to identify as someone with a hidden disability if you wish. This indicates to staff that you may need some support.



BATHROOM

The doors to the bathrooms are in the lobby. You can tell your family or companion when you need to use the bathroom if you need help.

It is good to try to use the bathroom before the show and during intermission.

Sometimes there is a line of people that want to use the bathroom.

There are bathrooms on the first floor and top floor.



BATHROOM



THEATRE DOOR

When the doors open to the theatre, you can line up and go into the theatre. Someone that works at the theatre will be at the door. That person is called an usher. An usher takes a look at your ticket and helps you find your seat. They give you a Program about the show.



THEATRE DOOR



THEATRE DOOR



INSIDE THE THEATER

The theatre has lots of seats and a stage. Your ticket tells you where your seat is. The usher will help you find your seat(s), which are in rows. The row is labeled on the aisle, and the seat number is on the folding part of the seat.

Your seat will be with your family and friends, and can be close to the stage or far away. There will be people you don't know sitting around you. The people sitting in the seats are called the audience.



The Stage



The show happens on the stage. Only actors and people that work at the theater are allowed on the stage.

Sometimes there is a curtain that hides what is on the stage. Sometimes the curtain is open and you can see what is on the stage. The decorations on the stage are called the set. There are no actors on the stage before the show starts.

Start of the Show

The lights in the theater will go darker when the show is about to begin. Sometimes people will clap when the show is about to start because they are excited to see the show.

People also sometimes clap:

- after a song (short)
- at the end of the first act before the intermission (short)
- at the end of the show (long clapping)

You can clap at these times too if you want to. If the clapping is too loud you can put on headphones or cover your ears. When people really like a show, they might stand up at the end while they are clapping. This is called a Standing Ovation. You can stand or sit!

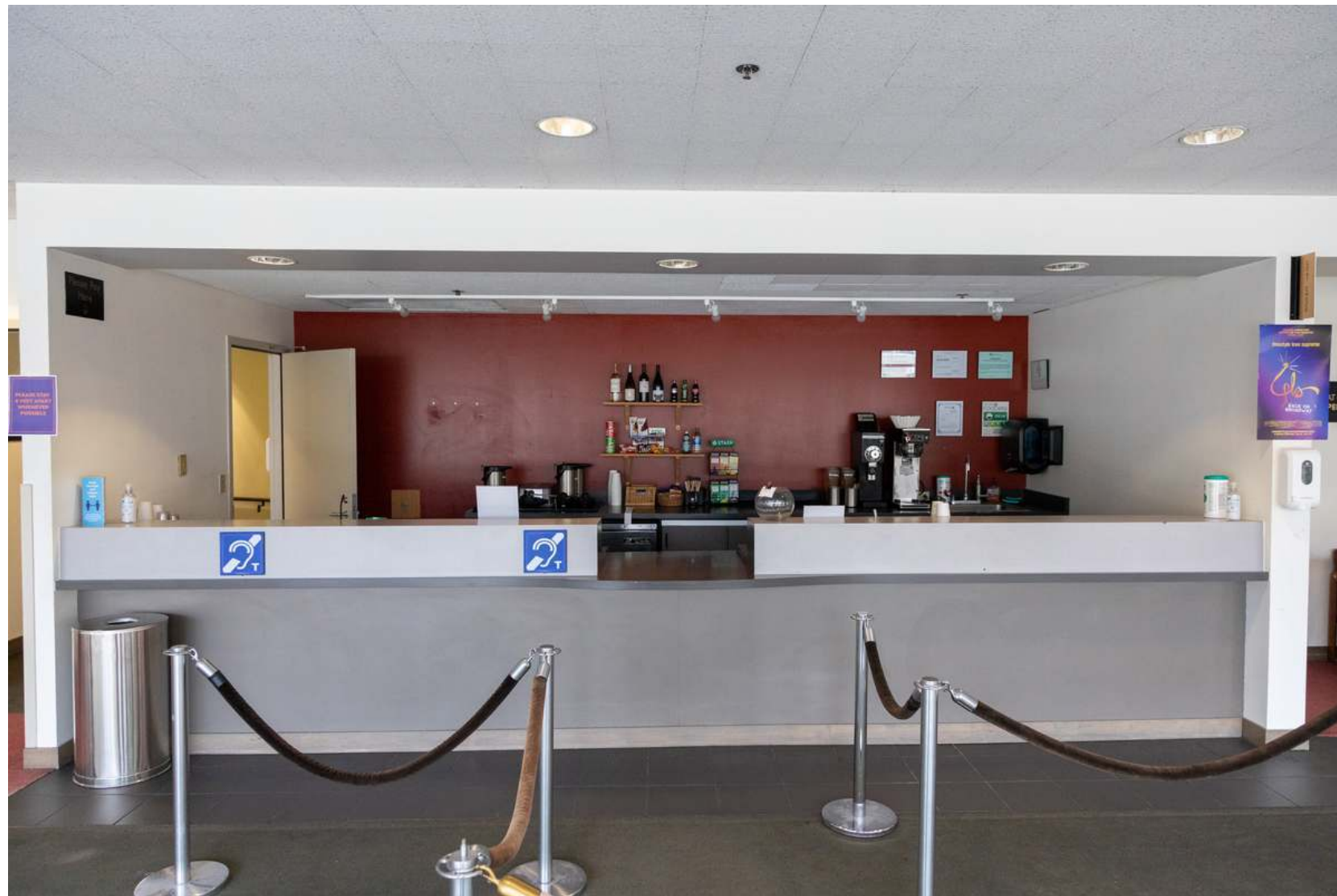


INTERMISSION

Most shows have a break, or intermission. The part before the break is called Act 1 and the part after is called Act 2. You can stay in your seat or you can get up and go in the lobby. Intermission is a good time to get a snack, use the bathroom or take a walk with your family/friends. You know it is time to get back to your seat when the lights flicker in the lobby.



INTERMISSION



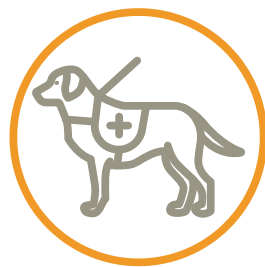
All Done!

At the end of the show, the actors take a bow on the stage and people clap for them to tell them “good job”. You will leave after the clapping is done and the actors leave the stage. Everyone in the theatre will want to leave, so it will take some time to get out of the theatre. It will be crowded. You will need to wait for your turn to walk out of the doors with your family. Your family and you will go into the lobby and then outside.

ACCESSIBILITY OPTIONS

At all Shows:

- Recognition of the Sunflower Lanyard
- Hearing Loop to borrow
- Service Dogs allowed
- Sensory Guide Available
- Wheelchair seating available
- Large print Programs available



ACCESSIBILITY OPTIONS

At some Shows:

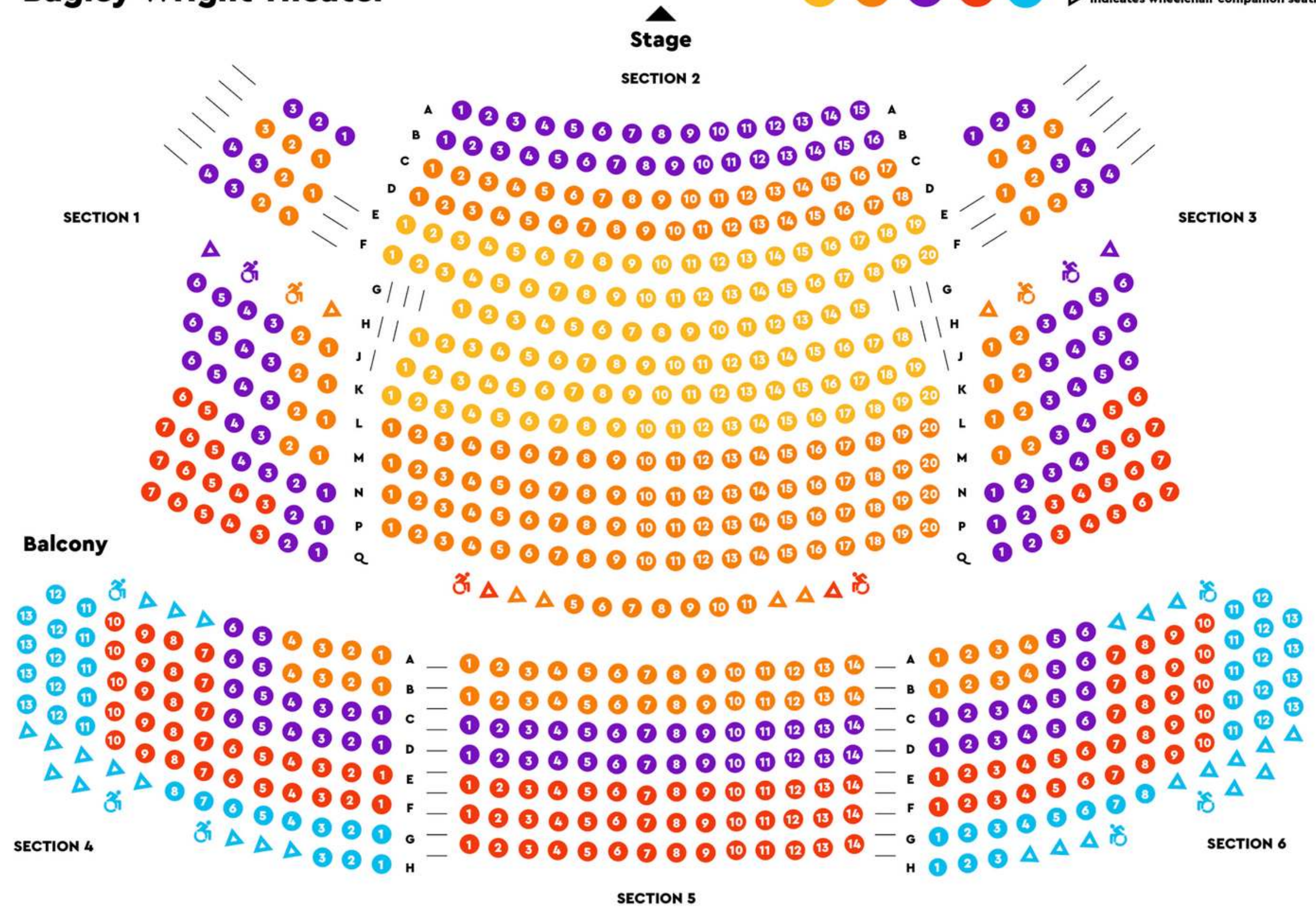
- ASL Interpretation
- Open Caption
- Audio Description
- Sensory-Friendly Productions



Bagley Wright Theater



Indicates wheelchair accessible seating
 Indicates wheelchair companion seating



● Orchestra/Loge

● Balcony

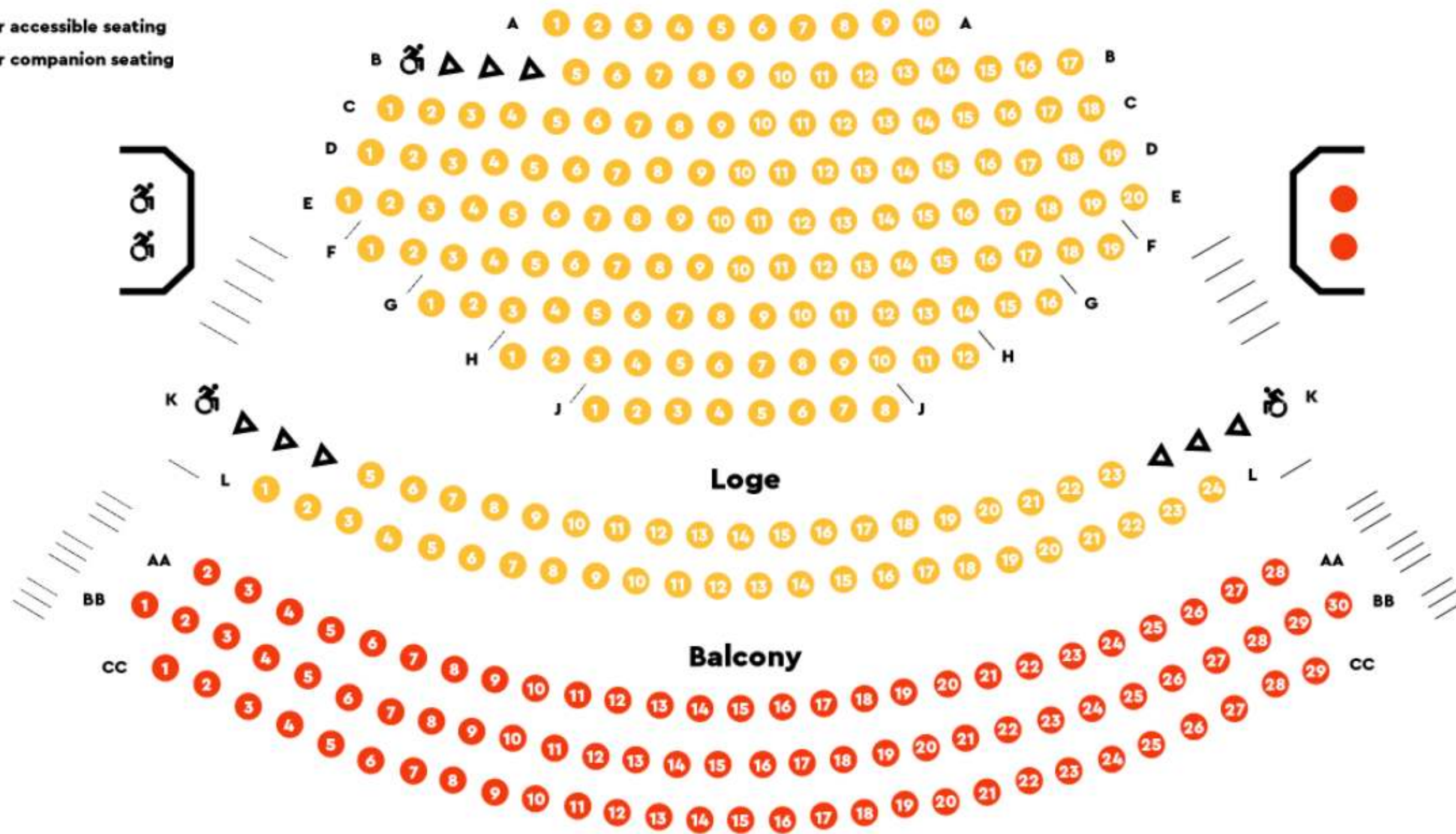
♿ Indicates wheelchair accessible seating

▴ Indicates wheelchair companion seating

▲
Stage

Leo K. Theater

Orchestra





Seattle Repertory Theatre is a
Certified Sensory Accessible Venue!



SENSORY ACCESS
ACCESS FOR ALL

<https://www.SensoryAccess.org>

SEATTLE

REP

<https://www.seattlerep.org/>