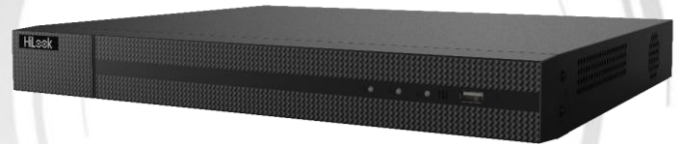


DVR-216U-K2 TURBO HD DVR

Key Feature

- H.265 Pro+/H.265 Pro/H.265 video compression
- HDTV/AVHD/CVI/CVBS/IP video input
- Audio via coaxial cable
- 32-ch IP camera inputs (up to 8 MP)
- Max. 800 m for 1080p and 1200 m for 720p HDTV signal transmission
- Up to 10 TB capacity per HDD



Compression and Recording

- H.265 Pro+ improves encoding efficiency and reduces data storage costs
- Full channel recording at up to 8 MP resolution

Storage and Playback

- 2 SATA interfaces
- Smart search for efficient playback
- Support the third party cloud storage (Dropbox/Google Drive/Microsoft OneDrive)

Smart Function

- Support multiple VCA (Video Content Analytics) events for both analog and smart IP cameras
- Support line crossing detection and intrusion detection of all channels, and 2-ch sudden scene change detection

Network & Ethernet Access

- Hik-Connect & DDNS (Dynamic Domain Name System) for easy network management
- Max. 64 Mbps incoming bandwidth, 128 Mbps total bandwidth

Specification

Model	DVR-216U-K2
Perimeter Protection¹	
Line Crossing Detection/ Intrusion Detection	2-ch Enhanced VCA mode on: 16-ch
Recording	
Video compression	H.265 Pro+/H.265 Pro/H.265/H.264+/H.264
Encoding resolution	8 MP/5 MP/4 MP/3 MP/1080p/720p/WD1/4CIF/VGA/CIF
Frame rate	Main stream: 8 MP@8 fps/5 MP@12 fps/4 MP@15 fps/3 MP@18 fps 1080p/720p/WD1/4CIF/VGA/CIF@25 fps (P)/30 fps (N)
	Sub-stream: WD1/4CIF/CIF@25fps (P)/30fps (N)
Video bit rate	32 Kbps to 10 Mbps
Dual stream	Support
Stream type	Video, Video & Audio
Audio compression	G.711u
Audio bit rate	64 Kbps
Video and Audio	
IP video input²	8-ch (up to 24-ch)
	Enhanced IP mode on: 16-ch (up to 32-ch), each up to 4 Mbps
	Up to 8 MP resolution
	Support H.265+/H.265/H.264+/H.264 IP cameras
Analog video input	16-ch
	BNC interface (1.0 Vp-p, 75 Ω), supporting coaxitron connection
HDTV input	8 MP, 5 MP, 4 MP, 3 MP, 1080p30, 1080p25, 720p60, 720p50, 720p30, 720p25
AHD input	5 MP, 4 MP, 1080p25, 1080p30, 720p25, 720p30
HDCVI input	4 MP, 1080p25, 1080p30, 720p25, 720p30
CVBS input	PAL/NTSC
VGA output	1-ch, 1920 × 1080/60Hz, 1280 × 1024/60Hz, 1280 × 720/60Hz, 1024 × 768/60Hz
HDMI output	1-ch, 4K (3840 × 2160)/30Hz, 2K (2560 × 1440)/60Hz, 1920 × 1080/60Hz, 1280 × 1024/60Hz, 1280 × 720/60Hz, 1024 × 768/60Hz
Audio input	1-ch, RCA (2.0 Vp-p, 1 KΩ), and 16-ch via coaxial cable
Audio output	1-ch, RCA (Linear, 1 KΩ)
Two-way audio	1-ch, RCA (2.0 Vp-p, 1 KΩ) (using the audio input)
Synchronous playback	16-ch
Network	
Remote connection	128
Network protocol	TCP/IP, PPPoE, DHCP, HiLookVision, DNS, DDNS, NTP, SADP, NFS, iSCSI, UPnP™, HTTPS, ONVIF
Network interface	1, RJ45 10M/100M/1000M self-adaptive Ethernet interface

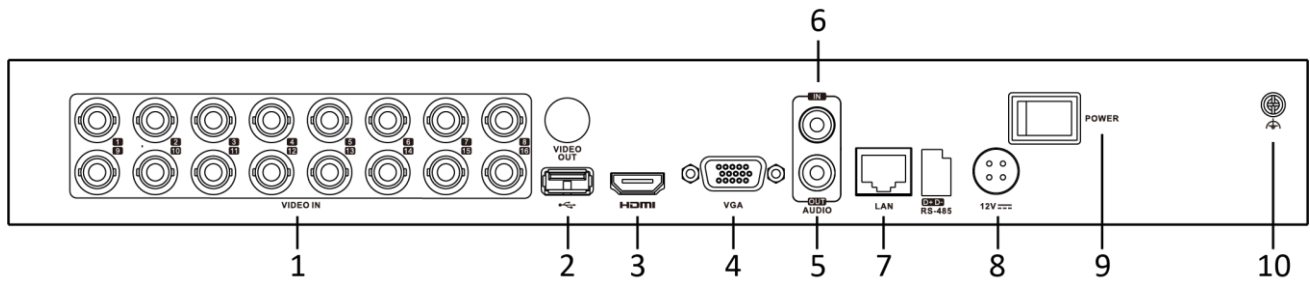
Auxiliary interface	
SATA	2 SATA interfaces
Capacity	Up to 10 TB capacity for each disk
USB interface	Front panel: 1 × USB 2.0 Rear panel: 1 × USB 3.0
General	
Power supply	12 VDC, 5 A
Consumption (without HDD)	≤ 25 W
Working temperature	-10 °C to +55 °C (+14 °F to +131 °F)
Working humidity	10% to 90%
Dimension (W × D × H)	380 × 320 × 48 mm (15.0 × 12.6 × 1.9 inch)
Weight (without HDD)	≤ 2 kg (4.4 lb)

Note:

1: Enabling enhanced VCA mode will maximize the connectable channel number for perimeter protection (line crossing detection and intrusion detection), but disable 2K/4K HDMI output resolution and 8 MP/5 MP/4 MP signal input.

2: Enhanced IP mode might be conflicted with smart events (perimeter protection) or other functions, please refer to the user manual for details.

Physical Interface



No.	Description	No.	Description
1	Video and Audio in	6	AUDIO IN
2	USB Interface	7	Network Interface
3	HDMI	8	Power Supply
4	VGA	9	Power Switch
5	AUDIO OUT	10	GND

Available Model

DVR-216U-K2