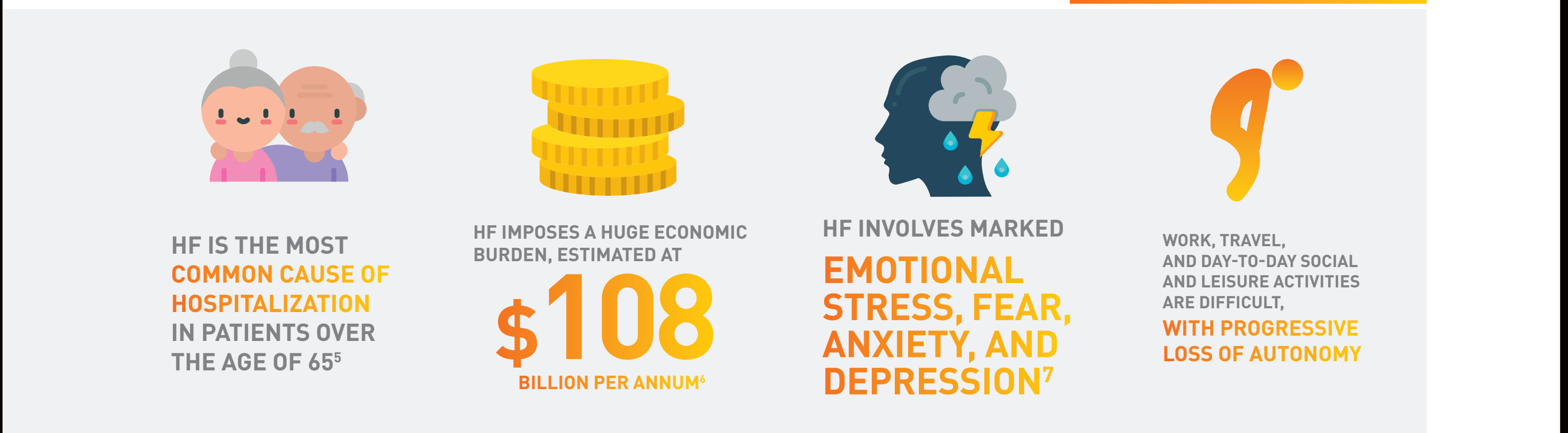


HEART FAILURE IN NUMBERS

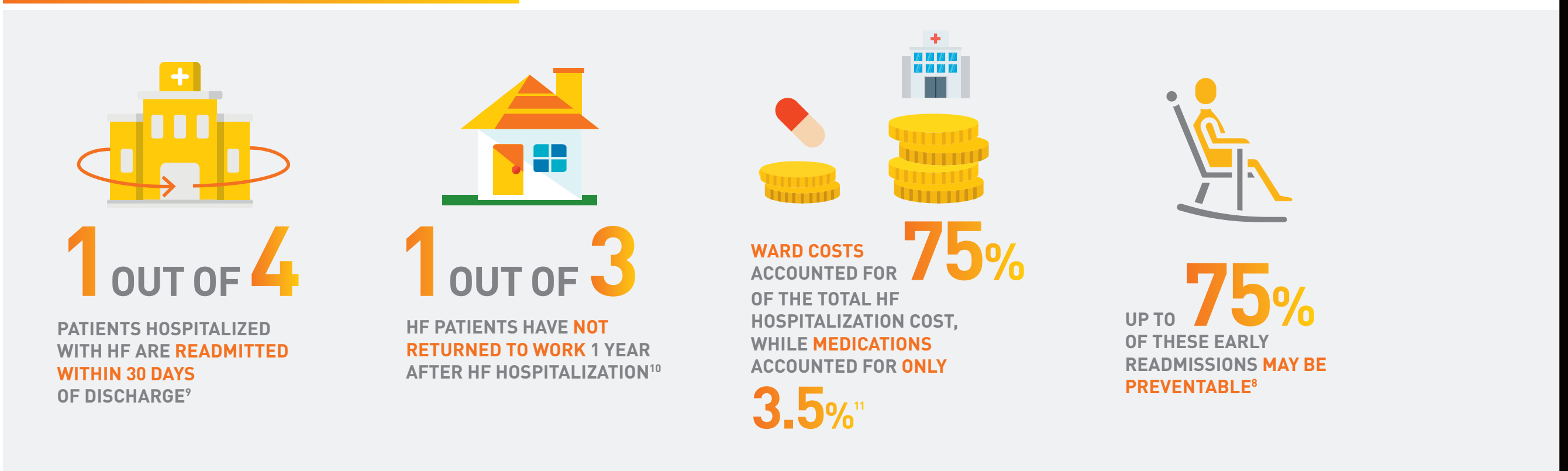
HEART FAILURE (HF) IS COMMON AND IS PROJECTED TO INCREASE DRAMATICALLY



HEART FAILURE GENERATES MAJOR ECONOMIC, SOCIAL, AND PERSONAL COSTS



HIGH BURDEN OF HEART FAILURE READMISSION



Find more information on the risks of heart failure at Heartfailurematters.org

#TakeControl #HeartFailure
#Servier #LifeisWorthLiving

1. Global Burden of Disease Study 2013 Collaborators. Global, regional, and national incidence, prevalence, and years lived with disability for 301 acute and chronic diseases and injuries in 188 countries, 1990-2013: a systematic analysis for the Global Burden of Disease Study 2013. *Lancet*. 2015;386(9995):743-800. 2. Lloyd-Jones DM, Larson MG, Leip EP, et al. Framingham Heart Study. Lifetime risk for developing congestive heart failure: the Framingham Heart Study. *Circulation*. 2002;106(24):3068-3072. 3. Benjamin EJ, Blaha MJ, Chiuve SE, et al. American Heart Association Statistics Committee and Stroke Statistics Subcommittee. Heart disease and stroke statistics-2017 update: a report from the American Heart Association. 4. Mamas MA, Sperrin M, Watson MC, et al. Do patients have worse outcomes in heart failure than in cancer? A primary care-based cohort study with 10-year follow-up in Scotland. *Eur J Heart Fail*. 2017;19(9):1095-1104. 5. Díez-Villanueva P, Alfonso F. Heart failure in the elderly. *J Geriatr Cardiol*. 2016;13(2):115-117. 6. Cook C, Cole G, Asaria P, Jabbour R, Francis DP. The annual global economic burden of heart failure. *Int J Cardiol*. 2014;171(3):368-376. 7. Rutledge T, Reis VA, Linke SE, Greenberg BH, Mills PJ. Depression in heart failure: a meta-analytic review of prevalence, intervention effects, and associations with clinical outcomes. *J Am Coll Cardiol*. 2006;48(8):1527-1537. 8. Van Walraven C, Bennett C, Jennings A, Austin PC, Forster AJ. Proportion of hospital readmissions deemed avoidable: a systematic review. *CMAJ*. 2011;183:E391-E402. 9. Dharmarajan K, Hsieh AF, Lin Z, et al. Diagnoses and timing of 30-day readmissions after hospitalization for heart failure, acute myocardial infarction, or pneumonia. *JAMA*. 2013;309(4):355-363. 10. Rørth R, Wong C, Kragholm K, et al. Return to the workforce after first hospitalization for heart failure: a Danish Nationwide Cohort Study. *Circulation*. 2016;134(14):999-1009. 11. McGowan B, Heerey A, Ryan M, Barry M. Cost of treating heart failure in an Irish teaching hospital. *Ir J Med Sci*. 2000;169(4):241-244.