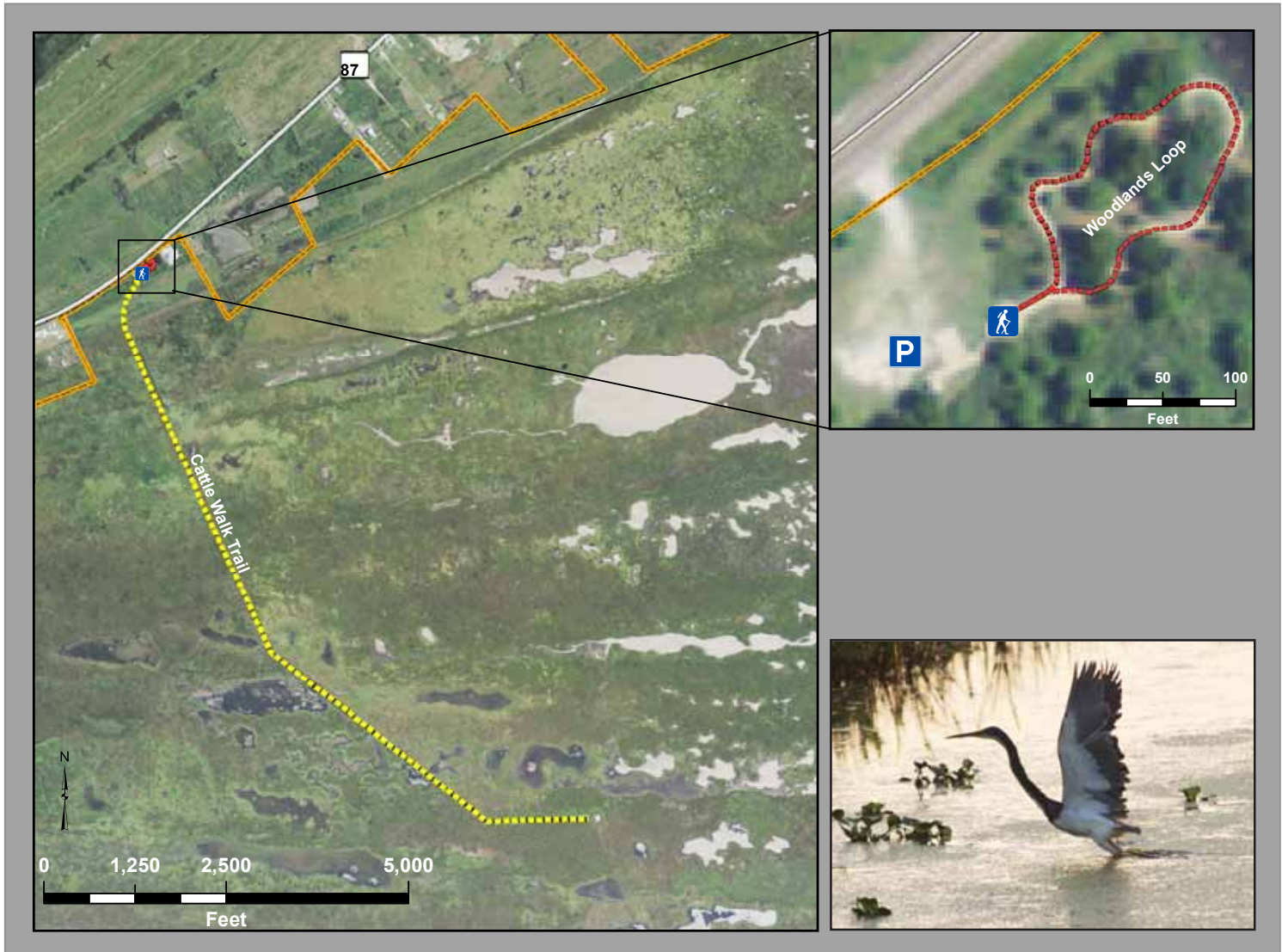




Welcome to
Texas Point National Wildlife Refuge



**Trail Length: Woodlands Loop - 500 Feet
 Cattle Walk Trail - 2.0 Miles**

Trail Surface: Natural/Smooth Stone

Physical Address: 7950 S Gulfway Dr., 77655

GPS Coordinates: 29° 42' 30" N 93° 55' 15" W

Directions: From Port Arthur, Take State Highway 87/S Gulfway Dr. for approximately 13 miles to Sabine Pass. Take a right at the four way stop in Sabine Pass and continue on State Highway 87/S Gulfway Dr. The refuge will be on your left about 2.5 miles.

Legend

- Parking
- Trailhead
- Woodlands Loop
- Cattle Walk Trail
- Road
- Texas Point National Wildlife Refuge

Texas Point Activities

- Hunting
- Fishing
- Birding
- Wildlife Photography



BEAUMONT
 www.beaumontcvb.com