

CLARK AND FLOYD COUNTIES
JEFFERSONVILLE · CLARKSVILLE · NEW ALBANY

Southern Indiana

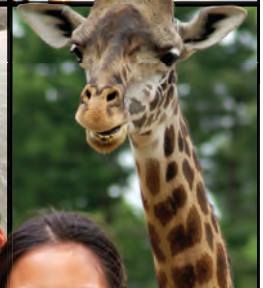
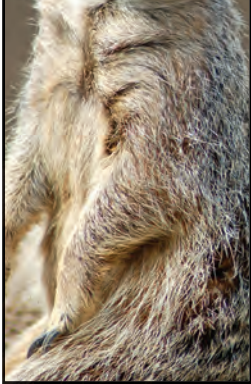
2017 VISITOR GUIDE & MAP



OFFICIAL PUBLICATION OF THE
CLARK-FLOYD COUNTIES CONVENTION & TOURISM BUREAU



Experience award-winning exhibits and fun attractions
PLUS lots of fun events to enjoy TOGETHER!



theZOO

LOUISVILLE

1100 Trevilian Way • (502) 459-2181
louisvillezoo.org

OPEN DAILY

Sept. 16, 2016 to March 17, 2017
10 a.m. – 4 p.m. (stay until 5 p.m.)

March 18 to Sept. 24, 2017:
10 a.m. – 5 p.m. (stay until 6 p.m.)

The Zoo is closed Thanksgiving,
Christmas & New Year's Day



WELCOME

STAY IN THE

SWEET SPOT

Southern Indiana is SoIN

BY JD DOTSON

As a person with a constantly nagging sweet tooth, I hear the term “sweet spot” and want to know directions and what delicious sweets I can get there. A sweet spot by definition is the best combination of factors. Not too little, and not too much, just right, so to speak. The weather is not too hot today, and it’s not too cold. It’s in the sweet spot.

I like to think of Clark and Floyd and surrounding counties of Southern Indiana as being in that sweet spot. The past few years have brought tremendous growth and revitalization to the area’s downtowns, as well as the growth of popular shopping areas.

There is no better time to shop, dine, and spend a weekend in Southern Indiana. Just minutes away from downtown Louisville are Clark and Floyd Counties, with popular dining, tourist destinations, concert and sports venues and shopping.

The Big Four Pedestrian and Cycling Bridge has made walking or biking across the river the best way to avoid traffic and deposit yourself near downtown Louisville, the KFC Yum! Center, Waterfront Park, Nulu and South Fourth Street. The bridge dates back to 1895. Originally a railroad bridge, it reopened in 2013 and connects Jeffersonville with Louisville’s Waterfront Park. Including its ramps, it is a one-mile span across the Ohio River and offers sweeping city views. The Big Four Bridge is a scenic way to go from small town to city in a matter of minutes.

If city life is not your scene all the time, you are just minutes away from the country. The hills of Floyds Knobs and Starlight are a short drive from the river towns. Driving up winding roads, you are moments from the city and high above it all. Several spots offer expansive views of Southern Indiana on

CONTINUED ON PAGE 4



Southern
Indiana
2017 VISITOR GUIDE & MAP

Index

- 7 Along the River
- 10 Abbey Road
- 13 Family Fun
- 17 Falls of the Ohio
- 18 Explore Downtown
- 21 Local Flavors
- 24-25 Map
- 28 Culinary Scene
- 30 Outdoor Recreation
- 31 Golf
- 32 Play
- 37 Stay
- 39 Groups & Meetings
- 40 Events
- 42 Summer Concert Series
- 44 Eat

CONTRIBUTORS:

EDITOR

Luanne Mattson

DESIGN

News and Tribune

PHOTOGRAPHY

Gerry Seavo James, Brian Bohannon, Kate Kane, Regina Walker-Tekulve

WRITERS

J.D. Dotson, Angie Fenton, Nicholas Siegel, Regina Walker-Tekulve

SWEET SPOT

CONTINUED FROM PAGE 3

the north bank of the Ohio River and Louisville on the south.

You'll see signs along these routes for Joe Huber's Family Farm & Restaurant. Follow the signs or see where the road takes you. Eventually they all seem to end in Starlight. Enjoy some home cooking at Joe Huber's restaurant. Depending on when you visit, you'll find fresh produce to pick or purchase like strawberries, apples, peaches, or pumpkins. Year round you'll find ice cream, a soda shop, gift store, events, music and wine. I love the Sweet Marcella at Huber's Orchard, Winery, and Vineyards. I fill up my cart at the farm market with dried vegetable snacks, homemade candy and my favorite dried soup mixes. My perfect idea of cooking is adding water and heating, and Huber's makes it taste like I know what I'm doing. With my car and my belly full, I head back to town.

Being in the sweet spot, I'm close to so many activities. It's easy to fill my day with experiences without spending the entire day in a car.

Just a short drive up is Charlestown State Park for some beautiful hiking along the river or to Clark State Forest, Indiana's oldest state forest.

I decided to stay close to town and hiked along the Ohio River Greenway, a developed causeway in Clarksville that leads to the Falls of the Ohio State Park. This 390-million-year old fossil bed on the banks of the Ohio River is one of the largest, naturally exposed Devonian fossil beds in the world. Paved paths wind you from the banks directly onto the fossil beds and to years of history captured in stone. The sun was bright and the beds were dry, giving me optimal fossil viewing. History under my feet, I got lost looking at all the strange rock shapes. When I looked up, I marveled at how close I am to home.

In one full and wonderful day, the sweet spot of Clark and Floyd Counties provided small town experiences, city bustle, country quiet, history, scenery and sunshine and maybe more than a few real sweets that hit the spot.

Stay Connected

Want to know the inside scoop on Southern Indiana? We're your source for where to stay, play, and eat in Clark and Floyd counties. Connect with us to get info – where and when you need it.

ON THE WEB

Visit us at GoSoIN.com

EMAIL

Subscribe to our email newsletter for up to the minute ideas on travel to Clark and Floyd Counties. Look for the E-Newsletter signup box on our website home page.

GET SOCIAL WITH US!

-  Facebook / [GoSoIN](#)
-  Twitter / [GoSoIN](#)
-  Pinterest / [SoINTourism](#)

VISITOR CENTER

Stop by the Southern Indiana Visitor Center to talk to one of our Visitor Information Specialists. We'll help you make the most of your visit with the low down on what to see, where to eat and things to do.

Southern Indiana Visitor Center

305 Southern Indiana Ave.
Jeffersonville, IN 47130
(812) 280-5566

GROUP TOURS

Want creative options for your group tour experience? Whether you have a set itinerary or you're looking for new ideas, call on us to help make your tour a smashing success!

BRING YOUR TEAM OR SPORT

If you're in Southern Indiana for a sporting event, why not book a tournament? We can help coordinate hotel room blocks, give you ideas on tournament banquet locations, and provide other resources.

MEETINGS MEAN BUSINESS

The Clark-Floyd Counties Convention & Tourism Bureau can help you find facilities to suit your needs.



VIEW OF SUNSET FROM ASHLAND PARK



It's all right here



EXPLORE THE OPPORTUNITIES ON FACEBOOK AND AT CITYOFJEFF.NET

City of Jeffersonville



If SoIN is in the *sweet spot*, why not find some sweets to sample?



SCHIMPPFF'S CONFECTIONERY

High on the sweet spot list is **Schimpff's Confectionery and Candy Museum**, where sweet chocolate and warm cinnamon greets you at the door. Here, you can watch Warren and Jill Schimpff make cinnamon red hot drops (they'll even give you a taste!). Just like founder Gustav Schimpff made them 125 years ago, the Schimpffs pour their hearts into their candies. Schimpff's is in historic downtown Jeffersonville. www.Schimpffs.com

Adrienne Holland of **Adrienne's and Company Bakery & Café** carries on her mother's cake-making tradition and talent. Well-known for her creative cake concepts and designs, Adrienne is also known for red velvet cupcakes, pecan sticky buns, and cannolis. Adrienne's has two locations; downtown Jeffersonville, and downtown New Albany. www.CakesToday.com

Since 1952, **Polly's Freeze** has been the spring and summer go-to for ice cream. The neon parrot sign is 1950s cool, and you're apt to find dog owners, first dates, and senior sweethearts enjoying a soft-serve treat, milkshake, malt, or other frozen delights. www.PollysFreeze.com

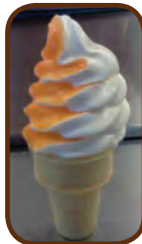
STILL CRAVING SWEETS?
We've got more at [GoSoIN .com!](http://GoSoIN.com)



Home cooked meals and desserts
- most meals **UNDER \$6!**

Seasonal hours may vary.

Family owned and operated
by the Wilder Family
for over 29 years!



MORE THAN JUST ICE CREAM!

3810 Hamburg Pike • Jeffersonville • 812-282-8707

Schimpff's Confectionery



*Celebrating
126 Years in 2017!*

Candy Store & Museum



Warren & Jill Schimpff

347 Spring Street • Jeffersonville, IN 47130
812.283.8367 • www.schimpffs.com
Monday - Saturday 10-5
Call for a free tour!

— ALONG THE — RIVER



NEW ALBANY RIVERFRONT AMPHITHEATER

BY NICHOLAS SIEGEL

Southern Indiana is fortunate to have beautiful waterfront views and plenty to do to take advantage of them. With a wealth of riverside events, dining spots, and attractions, you'll find captivating river towns along the Ohio in SoIN.

ENTERTAINMENT

If you're in the mood for music, **New Albany's Riverfront Amphitheater** is a scenic spot to relax and watch one of your favorite bands. But your options don't end here. You could also visit **New Albany's Bicentennial Park**, the **Jeffersonville RiverStage**, or **Warder Park**. All hold concerts and family-friendly movies near the water during warm weather months.

FOOD

Feeling hungry? If so, there are plenty of places to dine with a great view of the river. A local favorite is The **Bristol Bar & Grille**. Featuring a dining room and large outdoor patio, this is one of the best spots to get a great meal, sit back with a glass of bourbon, and gaze at the Louisville skyline. It also offers a gorgeous panoramic view of **Thunder Over Louisville**, one of the country's largest fireworks shows.



THUNDER OVER LOUISVILLE



BIG FOUR PEDESTRIAN BRIDGE



RIVERFRONT RECREATION

If you prefer something more low-key, why not enjoy a picnic with friends and family at one of the **Clarksville Parks**? Jeffersonville is connected to the Louisville Waterfront Park via the **Big Four Pedestrian & Cycling Bridge**. When you take the full one-mile trek, you'll cross the Ohio River – walking or cycling to two states in one day! On days when the weather is nice, nothing beats a stroll on foot over the Ohio River for a day of picnics.



STEAMBOAT DAYS

< *Steamboat Days*

One of the most popular events is the **Steamboat Days** festival in Jeffersonville, a celebration held every year over Labor Day weekend. In 2017, it will be the Steamboat Nights festival, with plenty of family entertainment, like the balloon glimmer, the parade, and even pony rides. The festival also features local artists and writers, a farm-to-table dinner, and wine tastings.



The **Ohio River Greenway** is a multiuse path open year-round. You can use the path to run, walk, or cycle along the Ohio River in Clarksville, Jeffersonville, and New Albany.



With so many wonderful events, it's fun to explore SolN's waterfront. We hope you start your own traditions with your family and friends!



Ohio River History >

The river plays a big role in the area's history. The riverside towns of Jeffersonville and New Albany were steamboat building towns in the 1800s. These towns and Louisville drove much of the Ohio River commerce. To find out more about that history, visit the **Howard Steamboat Museum**, the **Culbertson Mansion**, and the **Falls of the Ohio State Park**.

BELLE of LOUISVILLE
SPIRIT OF JEFFERSON

**Riverboat Cruises aboard
A National Historic Landmark
A short drive from Southern Indiana!**

Enjoy lunch, dinner, sightseeing, history cruises and more aboard the Steamer Belle of Louisville or Riverboat Spirit of Jefferson!

Go online to view our 2017 cruise schedule!

401 W. River Road Louisville, KY 40202

BelleofLouisville.org 502.574.2992

Sheraton
LOUISVILLE RIVERSIDE HOTEL

**Modern Luxury on
the Edge of the City**

Stay minutes away from the action in Derby City and indulge in amenities including free shuttle service, free in-room Wi-Fi, and indoor pool.

Book today by calling 812-284-6711.

©2016 Starwood Hotels & Resorts Worldwide, Inc. All Rights Reserved.

TRI-COUNTY SHRINE CLUB
CLARK - FLOYD - HARRISON COUNTIES

GIVING HELP AND HOPE TO KIDS FOR OVER 80 YEARS

**ALL YOU CAN EAT DINNER
EVERY FRIDAY 5 PM - 8 PM
\$ 9.00 INCLUDES TEA/COFFEE**

**JOIN US FOR FRIDAY
NIGHT DINNER**

812-948-9158
701 POTTERS LANE, CLARKSVILLE, INDIANA



CRUISE IT: RIVERBOATS

An iconic Ohio River experience is a cruise aboard the **Belle of Louisville** or **Spirit of Jefferson**. You'll get a completely new perspective of Southern Indiana on daily cruises that run spring through fall.

EXPLORE HISTORY

For exploration and a day of learning, consider a trip to the **Falls of the Ohio State Park**. The 390-million-year-old fossil beds are located on the banks of the Ohio River in Clarksville, and the park includes an interpretive center for presentations and exhibits. The Falls of the Ohio can help you teach your kids about fossil science, and it sponsors exciting events each year including Raptor Day, a butterfly festival, and a free fishing day.

'COME TOGETHER' at Jeffersonville's Abbey Road on the River

If you reminisce about the peace and love of the 60s, you'll want to be in Jeffersonville over Memorial Day weekend. Abbey Road on the River, a Beatles-inspired music festival, will fill the air with songs like "Here Comes the Sun," "Got to Get You into My Life," and so many more. Set along the banks of the Ohio River, the five-day celebration will mark the 50th anniversary of the "Summer of Love" and the release of the "Sgt. Pepper's Lonely Hearts Club Band" album.

Abbey Road on the River's lineup includes luminaries from that musical summer of 1967. Peter Noone of Herman's Hermits, Grammy winner Peter Asher, American rock band The Grass Roots, and Mark Lindsay of Paul Revere and the Raiders and more will appear. Saxophonist Jake Clemons is scheduled to perform. He regularly backs Bruce Springsteen and his E Street Band, following in the footsteps of his uncle Clarence, "The Big Man."

Area restaurants and bars will host other festival bands, transforming the entire Jeffersonville community into a Fab Four, "Beatle-ville." The stages will be sprinkled throughout Jeffersonville, overlooking the Ohio River.

WAVE 3 NEWS ABBEY ROAD ON THE RIVER

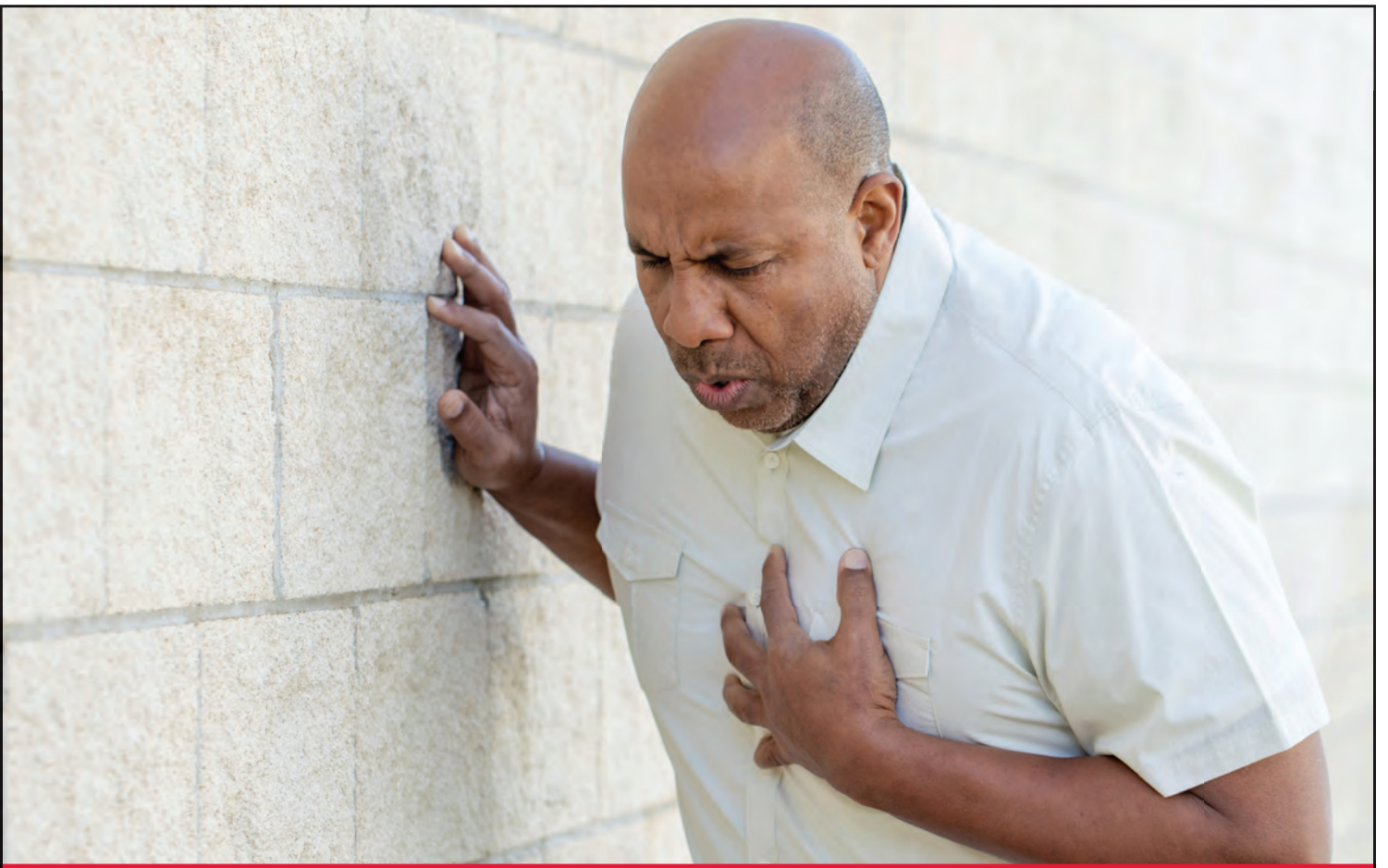
JEFFERSONVILLE, IN | MAY 25-29, 2017 | BIG 4 STATION PARK • RIVER STAGE | FISHERMAN'S WHARF



TICKETS

"All you need is love" to get in the 60s spirit, but you will need a "ticket to ride" to attend. For tickets and more info, visit www.AROTR.com.





AN URGENT HELLO

Health issues don't take vacation days!

When you're away from home and you need emergency care, choose Clark Memorial to answer your urgent hello. From minor illnesses to chest pain, trauma to mental health care, Clark Memorial's board-certified Emergency Medicine physicians and Urgent Care teams are always ready to help.

Urgent Care: Sellersburg

812.246.4808

Hunter Station Way

Sellersburg, IN 47172

Weekdays: 9 a.m. – 8:30 p.m.

Weekends: 9 a.m. – 7 p.m.

Emergency Care: Clark Memorial Hospital

1220 Missouri Avenue

Jeffersonville, IN 47130

Open: 24 hours a day, 7 days a week



**Clark Memorial
Hospital**

clarkmemorial.org

A Norton and LifePoint Partnership

A Family Hotel for Your Family Vacation

Our thoughtfully appointed rooms and suites are designed
to make families feel right at home...*only better!*

Ask about our Atlantis Waterpark Packages!

Newly Renovated • Just two miles from Downtown Louisville and many attractions

Complimentary High Speed Internet • Indoor And Outdoor Pool, Mini Golf, Tennis Court, Restaurant, Bar



Clarion Hotel & Conference Center Louisville North

505 Marriott Drive
Clarksville, IN 47129
812-283-4411



choicehotels.com/hotel/IN043

 Call or visit us online today for current promotions!



Slip down a 1/4 mile of
WATER SLIDES
or frolick in the **WAVE POOL!**

GROUP OUTINGS
Call 812-283-1604



Call Clarion 812-283-4411
for "Lodging and Water
Park" packages!

Open till first week of August



Located in Clarksville off I-65, Exit 1
next to Clarion Hotel & Derby Dinner.

812-285-0863

www.atlantiswaterpark.net



JEFFERSONVILLE ICE RINK

SO IN TO

FAMILY FUN

BY ANGIE FENTON

Regardless of the season, it's simple to find family-friendly activities in Southern Indiana year-round. Here are a few of our favorites.

GET CREATIVE

The **Carnegie Center for Art & History** in New Albany offers family-friendly workshops throughout the year for crafty kids and their parents. The **Arts Council of Southern Indiana** offers children's classes, in addition to programming and various events for art lovers of all ages. Plus, they have some of the coolest rotating exhibits as well as permanent exhibits that will educate and inspire. In Jeffersonville, the **Jeffersonville Arts Alliance** hosts "JAM Sessions," in which community members of all ages are invited to join with professional artists and educators to create a piece of public art. Several of their projects are already on display throughout the city.





DERBY DINNER PLAYHOUSE

The world-renowned – yes, world-renowned – **Derby Dinner Playhouse** in Clarksville is a must-visit hot spot in Southern Indiana. If your little ones aren't old (or mature) enough to sit through one of the productions geared more toward adults, the theater also offers breakfast and lunch performances specifically for kids.

Watching the Schimpff family and their staff make candy at **Schimpff's Confectionery** in Jeffersonville is always an enjoyable option, especially when it comes to taste testing the sweet treats.

- ▶ NEW ALBANY FARMERS' MARKET
- ▼ HUBER'S ORCHARD, WINERY & VINEYARDS



★ ★ ★

FOR OVER 40 YEARS DERBY DINNER PLAYHOUSE has provided thousands of people in the region with a ticket guaranteed to make an evening of great memories.

Plentiful Salad Bar & Buffet	Pre-Show Performance
Corporate Parties & more	Free Parking
Live Stage Performance	Free Coffee

enjoy our
**FANTASTIC DESSERTS,
GIFT SHOP & LOUNGE!**

Derby Dinner
PLAYHOUSE

f t www.derbydinner.com / 812.288.8281

Vintage Fire Museum

and Safety Education Center

Nationally-known collection of beautiful firefighting engines and artifacts; it tells the complete story of the firefighting in this country back to the 1700's.

Hours: Tuesday to Saturday during the Summer; Fridays and Saturdays the rest of the Year. 11am-4pm on weekdays, 10am-5pm on Saturdays. Available for tours, parties, and special events. Call 812-948-8711 for more information.

723 Spring Street | Jeffersonville, IN 47130 | 812-282-4705
www.vintagefiremuseum.org • vfmuseum@gmail.com



GET PICKING

Eager to try local fare and take home some of your own? Try one of the numerous open-air **farmers' markets** in Southern Indiana. Some, like the one in downtown New Albany, have weekly hours, regardless of weather.

Depending on the season, pick your own strawberries, peaches, apples, and pumpkins at Joe **Huber's Family Farm & Restaurant** in Starlight. Then, sit down to a delicious family-style meal, including fried chicken, apple butter and Huber Honey Ham.



Huber's Orchard, Winery & Vineyards is located just down the road. There, you can dine, play, shop, pick your own and plan a couples-only return visit, too.

GET DOWN

Do your kids love to dance or listen to music? You'll often find live music to suit everyone's taste at the **RiverStage** and **Warder Park** in Jeffersonville, New Albany's **Bicentennial Park** and **Riverfront Amphitheater**, and **Clarksville's Gateway Park**. You can also find live music at smaller stages and various restaurants and attractions around SoIN.



WARDER PARK, JEFFERSONVILLE

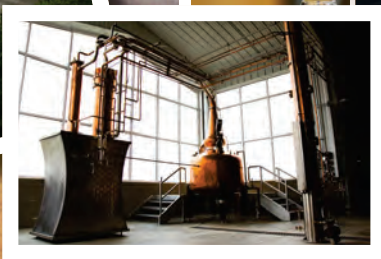
Huber's
ORCHARD, WINERY & VINEYARDS
Starlight, Indiana

"Family Owned and Farmed Since 1843"

- Indiana's Largest Estate Bottled Winery •
- Starlight Distillery • Farm Market • Bakery •
- Plantation Hall • Starlight Café for Lunch •
- Winery & Distillery Tours and Tastings •

Seasonal Activities

- Ice Cream & Cheese Shop • Family Farm Park •
- Tractor Rides to the U-Pick Fields •



Visit our Starlight Distillery!
Tours and Tastings available daily.
Please call for tour reservations.
www.starlightdistillery.com

19816 Huber Rd. • Borden, IN 47106
812.923.9463 • www.huberwinery.com



Proud to be a part of Indiana's history!



CHARLESTOWN STATE PARK



RIVER RUN FAMILY WATER PARK

~ Make a splash!

Open during warm weather, River Run, New Albany's family water park, is the perfect place for kids of all ages, with its slides, splash pad, lazy river and pool. A visit there will surely become a favorite memory for decades to come. Just down the road in Clarksville, you'll find Atlantis Waterpark, which sits next to the Clarion Hotel and Conference Center.

GET OUT THERE

Charlestown State Park is a hiker's dream, even for the inexperienced and littlest among us. The park features several beautiful trails, from moderate to rugged. If you aren't carrying your wee ones, plan to walk for a few minutes, set your watch and then head back. Thanks to the gorgeous scenery, you just might find your kids begging to go farther when your self-imposed time is up.

Deam Lake State Recreation Area in Borden offers campsites, cabins, fishing, boating and swimming. There is a playground area located near the beach of the 194-acre lake as well as the start to the renowned Knobstone Trail – Indiana's longest. It starts in Clark County and continues for 58 miles.

Big Four Station in Jeffersonville is a beautifully designed park at the bottom of **Big Four Bridge** that also welcomes bicycles (no pets, please). The park area boasts greenspace, fountains, a playground, and pavilion. It's also home to a variety of family-friendly events. In 2017, it will host **Abbey Road on the River**, a five-day Beatles-inspired festival that will celebrate the peace and love ideals of the Fab Four.

The **Ohio River Greenway** runs along the Indiana waterfront. It's the perfect place to explore a little or a lot. Three sections of the Greenway are open; once complete, the sections will form a 12-mile, multiuse path linking Jeffersonville, Clarksville, New Albany and Louisville.

When the weather is warm, you can rent bikes from **The Widow's Walk Ice Creamery** in Clarksville or Wheel Fun Rentals in Louisville; then you can return for a sweet treat.

The Falls of the Ohio State Park

The Falls of the Ohio State Park reopened its interpretive center in 2016 after a complete renovation. You can tour four new interactive exhibit areas.



Because it's located just above one of the world's largest Devonian era fossil beds, you'll want to check out the Devonian Sea exhibit. In it, you'll hear the marine life and watch a projection of the now-extinct creatures that once gobbled the small-fry fish and plankton. You're encouraged to crank the cranks, pull the levers and work the dials. You'll get an understanding of the sea life that existed here more than 300 million years ago as you watch sea corals

pop up and disappear into the sea beds.

Continue through and you'll see roughhewn walls resembling a frontier cabin, an Indian structure where you'll hear a recording of the near-extinct Shawnee language, and "meet" an archaeologist and a paleontologist through life-size cutouts.

You can almost smell the campfire wood burning as you watch a film about Lewis and Clark. Here you'll learn that the Corps

of Discovery was formed from men who lived throughout this region.

The Falls of the Ohio tells the important story of how Louisville and our SoIN cities were formed during the United States' pioneer days.

LEARN MORE
FallsOfTheOhio.org

Welcome to Jeffersonville!



Aquatic Center
 Open Memorial Day weekend through Labor Day weekend.

Ice Rink
 Open throughout the Holiday Season. *Hours may vary.*

Riverstage Twilight Cinema
 Saturday nights from Memorial weekend until Labor Day weekend. Family friendly movies.

Riverstage Concert Series
 Friday nights from Memorial Day weekend until Labor Day weekend.

500 Quartermaster Ct. Room 205 • 812.285.6440 • www.jeffparks.org



THE GRAND, NEW ALBANY

EXPLORE DOWNTOWN

DOWNTOWN NEW ALBANY AND JEFFERSONVILLE

SoIN's Historic Riverside Neighborhoods

BY JD DOTSON

The past five years have seen new local businesses popping up in downtown Jeffersonville and New Albany. The towns are growing and changing; once empty buildings are getting new life. If you've been to SoIN but haven't been recently, you'll want to visit again. Both cities are incredibly walkable, with unique finds and fabulous food – and incredible views of the mighty Ohio River.

Much like Jeffersonville, New Albany's historic buildings have

been beautifully renovated. Both have embraced their historic past. Cases in point: the gorgeous **Culbertson Mansion State Historic Site** in New Albany and the **Howard Steamboat Museum** in Jeffersonville. The Culbertson family's rich history is brought to life in vivid detail inside this meticulously restored mansion. It is a stunning peek into New Albany's high society past. Just as lavish is the Howard Steamboat Museum in Jeffersonville, a testament to the hard work of the Howard family's

SAPPHIRE ON SPRING
JEFFERSONVILLE

steamboat business. The 22-room mansion sits next to the shipyard and is full of photographs and memorabilia detailing steamboat history. Touring both mansions and exploring their well-preserved downtowns gives you a sense of the past coming to life.

While celebrating their pasts, both towns have also embraced their future by welcoming new businesses and redevelopment efforts by entrepreneurs, business leaders, and local governments. The towns have seen an amazing boom of restaurants, a winery, breweries, coffee shops, bakeries, yoga studios, gift shops, art galleries and boutiques. Both towns have been especially supportive of locally-owned businesses. I spent the weekend exploring New Albany and

Jeffersonville and am in love with Southern Indiana more than ever.

Saturday morning in New Albany began with a cup of coffee from **Quills**. I have many weaknesses and good coffee is at the top of the list. Quills does not disappoint. I try to talk myself out of stopping in **Adrienne and Company** for a maple iced long john topped with bacon. Anyone who knows me can guess I did not win that fight. But losing tasted pretty amazing.

New Albany has a thriving **Farmer's Market** on Saturday mornings, and I always find something unusual as well as a healthy bunch of veggies. The market



▲ HOWARD STEAMBOAT MUSEUM
 ◀ NEW ALBANY BICENTENNIAL PARK

Rails 1/4

HOOPSTERS

SPORTS GRILL

Welcome to
Jeffersonville!

Mention this ad,
and receive 15%
OFF your entire
meal purchase!*

*Offer good through
12/31/2017. Offer does
not apply to purchase of
alcoholic beverages.

830 E.10th St,
Jeffersonville,
IN 47130

(812) 914-7101

www.hoopsterssportsbar.com



We are a smoke free venue!

is bustling with activity, and booths spill out into the street selling everything from peanut butter marshmallow whip (yes, I bought it) to handcrafted furniture and jewelry, and, of course, a wide selection of local meat, eggs and produce.

Picking out food and gifts are two of my strengths, so I popped into some of the local shops. There are several boutiques, **Dress and Dwell**, **Colokial**, **Mariposa**, **Oh Baby** for the kiddos and **HIM** for the guys. I hit up **True North** and **Madhouse** and stopped into **Regalo** for funky socks and original SoIN gear, a necessity for any fan of Southern Indiana. **Copper Moon** had me standing in awe at the paintings, and finally I popped into **Pearls on Pearl** for some delicious New Albany honey.

A beautiful fall day drew me to the **Ohio River Greenway**, a series of paths connecting New Albany, Clarksville and Jeffersonville to Louisville and the **Louisville Loop**. It follows the river

east through wooded banks and under train trestles. I got back into my car and headed east.

Once I got to Jeffersonville, I headed straight to **Schimpff's Confectionery**. The family-owned business has been continuously making candy in the same spot since 1891. After watching the candy makers work their magic, pouring over the hundreds of confections, I narrowed my selections to two: the store's famous cinnamon red hot drops and my personal favorite, the Modjeska (a caramel-covered marshmallow.)

I decided to leave before I got into real trouble and walked around downtown popping into **Sapphire on Spring**, **Choices Boutique**, and **Lavender Hill** before getting caught up in the fun costumes at **Horner Novelty**. In keeping with my "healthy" eating day, I grabbed a cinnamon swirl bun from **Sweets by Morgan**, then walked up the ramp to the **Big Four Bridge**. Thousands of people have walked and biked its span from Jeffersonville to Louisville and back.

COPPER MOON
NEW ALBANY



I've found the inviting downtowns, restaurants, shops, and kind people make people want to come back again and again.

STRAND & THREADZ

SALON & BOUTIQUE

Come Experience Our Group Tour Pampering, Relaxation and Craft Packages!

- ✓ Great stop for filler time, anywhere from 15 minutes to 2 hour activities.
 - ✓ Full Service Salon and Spaah
- ✓ Trendy Boutique carry purses, jewelry, clothing and more for shopping
 - ✓ Stroll through the Decades of Style
 - ✓ Leave your mark on the local Map
 - ✓ Free Bus Parking
- ✓ Conveniently Located close to Culbertson Mansion, Division Street historical School, downtown shopping and eateries!

812.945.5480
322 Vincennes Street
New Albany, Indiana, 47150

www.strandzandthreadz.com

STORE HOURS: 10:00 AM – 7:00 PM (Monday through Friday) • 9:00 AM – 4:00 PM (Saturdays)

Stop in and receive

20% off your meal

with the mention of this ad!*

425 MEIGS AVE
JEFFERSONVILLE, IN

Homemade Soups • Fresh Salads • Made to Order Sandwiches

Monday-Saturday

(812) 288-8515 • cafeonmeigs.com

*Offer expires 12/31/2017.

SoIN TO

Local Flavors

Local makers produce wines, brews and spirits

Enjoy brews in SoIN's growing craft beer scene. Sample a flight at Jeffersonville's **Flat12 Bierworks**, **Pearl Street TapHouse**, and **Red Foot Brewing Company**. Or taste the taps in downtown New Albany's **Floyd County Brewing Company**, **New Albanian Brewing Company's** two locations, and **Donum Dei Brewing Company**. Whether you prefer an amber ale or dark lager, you'll appreciate SoIN beers that embrace local flavors and the area's German heritage. Six other local restaurants make craft beer the star. **Buckhead Mountain Grill** has more than 30 taps.

Visit Starlight's **Huber Orchard, Winery, and Vineyards** for the "whole grape" experience! All the wine, brandies, ports, and infusions produced at Huber's are made from the fruit and grapes grown on the 600-acre estate.

Family owned and farmed since 1843, enjoy onsite tours, wine tastings, or a glass on the countryside patio.

In downtown New Albany, **River City Winery** produces and bottles 30 varieties of wine in downtown New Albany. The medal-winning Chambourcin and Traminette varietals are among those served with brick oven pizzas, pastas, and other entrees.

SoIN's coffee roasters and brewers provide the aroma therapy and get-up-and-go you need. **Hobknob Coffee Company** roasts at two locations – Floyds Knobs and Jeffersonville. **Coffee Crossing** now has three nearby locations. **Heine Brothers** and **Two Tired Bike and Bean** are also located in Jeffersonville. **Village House Coffee** rounds up the SoIN coffee trail, located in Georgetown. For inviting



DRINK. ENJOY. REPEAT.
(Responsibly, of course!)

FLOYD COUNTY BREWING CO.

atmospheres, hot, iced, or blended coffees, these SoIN coffee houses offer "perk-fection."

THIRSTING FOR MORE?
Visit GoSoIN.com



#BlackArtMatters

Feb 3 - April 8, 2017

Come join us for these great exhibitions in 2017!



CARNEGIE CENTER
For Art & History
A Department of the New Albany-Floyd County Public Library

201 East Spring Street, New Albany, IN
Open Tues - Sat, 10 am - 5:30 pm
FREE ADMISSION!
CarnegieCenter.org | 812-944-7336



Pulp Art: Out of the gutter and on the walls

May 12 - July 8, 2017



Form, Not Function:
Quilt Art at the Carnegie
July 21 - Sept 16, 2017



Laura Hartford
2017 Photo Biennial exhibition
Sept 29 - Nov 25, 2017



Jamey Aebersold:
From the Top
Dec 8 - Feb 3, 2018



CHARLESTOWN

★ ★ ★ ★ ★ *Generations of Pride Since 1808* ★ ★ ★ ★ ★

EXPLORE, CELEBRATE AND DELIGHT



CHARLESTOWN ATTRACTIONS

- ★ Charlestown State Park
- ★ Charlestown Mall Bed & Breakfast
- ★ Historic Tunnel Mill
- ★ Greenway Park
- ★ Family Activities Park
- ★ Christmas in Charlestown
- ★ Founders Day Festival (June)



A Good Place to Visit. A Great Place to Raise a Family.



812.256.3422 | facebook.com/groups/cityofcharlestown | cityofcharlestown.com

RIVER RUN FAMILY WATER PARK
NARIVERRUN.COM



NEW ALBANY

IT'S WHERE
YOU SHOULD BE!



MAYOR JEFF M. GAHAN

City of New Albany.com • Facebook.com/NewAlbanyIN





Develop New Albany

A Main Street Organization

SIGNATURE EVENTS

On behalf of everyone at Develop New Albany we look forward to seeing you at these events.

2017 Develop New Albany Indiana Signature Events:

February 7th –Develop New Albany Open House & Networking Mixer
222 Pearl St
New Albany, IN 47150

March 7th – Be Local-New Albany Elks Lodge #270
426 Pearl Street
New Albany, IN 47150

May –Preservation Month Activities

May 2nd –Networking Mixer – Vintage Style and Design
128 W. Main St
New Albany, IN 47150

June 29th – Annual Meeting

July 4th – 5K Race

August 1st –Networking Mixer-Location TBA

September 9th – Historic Home Tour

September 23rd – Coffin Race with The Culbertson Mansion – Riverfront

November 7th – Networking Mixer-Location TBA

November 25th – Jingle Walk & Holiday Fest

December 9th – Old Fashioned Christmas

Uptown Spirit Stroll – Date to be announced.

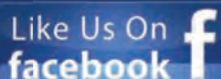
Other Event dates to be announced



FARMERS MARKET



The Downtown New Albany Farmer's market is managed by Develop New Albany with help from volunteers in our community. Our Farmer's Market is located in downtown New Albany, Indiana on the corner of Bank and Market Streets at 202 East Market Street. For dates, times and additional information go to www.developna.org or contact info@developna.org.



For more information on becoming a Develop New Albany member, upcoming events, and to sign up for our newsletter please go to www.DevelopNA.org



Develop New Albany
A Main Street Organization

**See what New Albany
has to offer!**

For more information and events calendar go to
www.developna.org

**10 minutes from Downtown Louisville, across the Sherman Minton Bridge.
Check the website for our free concerts and events schedule.**

**Restaurants & Pubs, Micro Brew & Winery
Art Galleries & Retail Shopping
Downtown Free Concert Series
Historical Sites and Museums
Farmers Market
Historical Building Restorations**





#SoINtoFood

GOSPEL BIRD

SoIN

CULINARY SCENE

Good neighbors borrow from each other. A cup of sugar here, a country ham there, a bottle of bourbon ... that's the benefit of being next to Louisville. We're so close, our culinary scene is bourbon-infused, corn-fed, and oh so good. Here's a guide for you to sample our southern-inspired meals and more, served with our famous Hoosier hospitality.

COUNTRY FAVORITES

You might expect to find country cuisine, and you won't be disappointed. The family behind **Joe Huber's Family Farm & Restaurant** serves up famous home cooked meals, complete with fried biscuits and apple butter. If you're there in summer or fall, work up an appetite in the u-pick produce fields. Afterward, head to **Huber's Orchard, Winery, and Vineyards** for a sip of wine or sample spirits.



THE EXCHANGE PUB + KITCHEN

LOCAL (AND RENOWN) GOAT CHEESE

On the menu at many SoIN restaurants is award winning Carpiole Goat Cheese, which is made locally. It's served in various restaurants throughout SoIN. It's also the star of a delicious appetizer at **The Exchange Pub + Kitchen**: the Goat Cheese Fritters. You'll get seven melt-in-your-mouth spheres of lightly breaded cheese served on a bed of bacon aioli, drizzled with honey.

EXOTIC ETHNIC FLAVORS

Louisville has the nation's fastest growing Cuban populations, so it's fitting to check out **Habana Blues** Tapas Bar in downtown New Albany. **Aladdin's Café** serves delicious piping hot shawermas, baba gahnoush, and gyros. For a special dessert, you don't want to miss the flaming bananas foster or a soufflé (make sure to order ahead)

from **Olive Leaf Bistro**. And that's just the beginning of our culinary scene.

DELICIOUS VEGAN AND VEGETARIAN FARE

If you think the Midwest is full of meat eating, cattle farming, corn-fed residents, you'll be surprised with two delicious vegan/vegetarian standouts. Both **Seeds & Greens Natural Market and Deli** and the **NABC Café and Brewhouse** present vegan and vegetarian options that will make the most committed meat lover sit up and take notice. Meat lovers, never fear. They have meat options, too.

SPEAKING OF MEAT LOVERS...

Feast BBQ serves up impeccably smoked meats. Award winning Chef Ryan Rogers pairs those meats with

collard greens, decadent loaded tater tots, and... wait for it... bourbon slushies. Steaks are the main course at **Brooklyn & The Butcher**, a new restaurant in New Albany. With cuts ranging from eight to 32 ounces, you'll find a satisfying meal in this renovated hotel. Step into **Gospel Bird** and you'll feel like you're in southern fried heaven. The restaurant pays homage to the traditional fried chicken Sunday dinner that follows church and also serves heavenly shrimp and grits.



OLIVE LEAF BISTRO

BREAKFAST OR LUNCH?




WILD  **eggs**

1450 Veterans Parkway, Suite 160
Jeffersonville, IN 47130
812-913-4735

Red Yeti 1/4

Outdoor Recreation



CLARK CABIN

CHARLESTOWN STATE PARK

GET READY FOR AN
Outdoor Getaway

- HIKE
- MOUNTAIN BIKE
- CAMP
- FISH
- PICNIC
- SWIM
- RIDE HORSES

OHIO RIVER GREENWAY

When complete, the Ohio River Greenway multiuse path will connect the riverside towns of Jeffersonville, Clarksville and New Albany. Take a walk or ride any or all parts of the 7.5-mile trail along the river's edge. You'll see terraced lawns, riverside stages, the Falls of the Ohio State Park, the Loop Island Wetlands, and spectacular views of the McAlpine Locks and Dams and the Louisville skyline.

OhioRiverGreenway.org

OHIO RIVER SCENIC BYWAY

Drive or cycle this scenic byway along the Ohio River. Indiana's section of the byway is 300 miles; it runs all the way from Ohio to Illinois. Along the historic byway, you'll find recreation, culture, art and history.

OhioRiverByway.com

CHARLESTOWN STATE PARK

Hikes range from easy to challenging. Trails overlook Fourteen Mile Creek and the Ohio River. Enjoy interpretive programs, hiking, camping, and a boat launch on the Ohio River. Visit the Rose Island Exhibit, a former amusement park that Louisvillians flocked to in the Roaring '20s.

12500 Highway 62
Charlestown, IN 47111
(812) 256-5600
in.gov/dnr

CLARK STATE FOREST

Indiana's oldest state forest boasts fishing, camping, hiking and bridle trails. The 58-mile Knobstone Trail, the state's longest hiking trail, begins here.

9000-9136 Brownstown Rd.
Henryville, IN 47126
(812) 294-4306
in.gov/dnr

DEAM LAKE STATE RECREATION AREA

A 194-acre lake is open seasonally with two campgrounds, Forest Education Center, horse and hiking trails, mountain biking, and boat rental.

1217 Deam Lake Rd.
Borden, IN 47106
(812) 246-5421
in.gov/dnr

FALLS OF THE OHIO STATE PARK AND INTERPRETIVE CENTER

When river levels are low, walk onto the park's 390-million-year-old Devonian fossil beds – one of the world's largest. You'll see sea creatures captured in stone. Not sure what you're looking for? Visit the interactive exhibits at the Interpretive Center. You'll step through "time tunnels," where you can piece together the area's history.

(812) 280-9970
201 West Riverside Dr.
Clarksville, IN 47129
FallsOfTheOhio.org

FORE!

Southern Indiana's fairways offer beautiful scenery and hilly landscapes of the Ohio River valley.



OUTDOORS

CHAMPIONS POINTE GOLF CLUB

Demanding, yet fair course with Zoysia grass fairways, multiple lakes and strategic bunkers amid undulating greens.

1820 Champions Club Lane
Henryville, IN 47126
(812) 294-1800, ext. 4
FuzzyGolf.com/ChampionsPointe_Home/

COVERED BRIDGE GOLF CLUB

Five lakes and a meandering creek along the Zoysia grass fairways.

12501 Covered Bridge Road
Sellersburg, IN 47172
(812) 246-8880
FuzzyGolf.com/CoveredBridge_home/

ELK RUN GOLF CLUB

Now a semi-private course, Elk Run's fairways and greens welcome all levels of players.

1820 Charlestown Pike
Jeffersonville, IN 47130
(812) 283-9022
ElkRunGolfClub.com

HIDDEN CREEK GOLF CLUB

SoIN's only 27-hole course features the 18-hole CreekLake course or the 9-hole links-style course.

4975 Utica Sellersburg Road
Jeffersonville, IN 47130
(812) 246-2556
HiddenCreekGolfClub.com

VALLEY VIEW GOLF CLUB

Renovations added a par-5 on the front nine to this 18-hole, par 71 course.

3748 Lawrence Banet Road
Floyds Knobs, IN 47119
(812) 923-9280
ValleyViewGolfClub.org

WOODED VIEW GOLF COURSE

No homes restrict play on this beautiful wooded course.

2404 Greentree North
Clarksville, IN 47129
(812) 283-9274
WoodedViewGC.com



**Wooded View
Golf Course**

2404 Greentree North
Clarksville, IN
(812) 283-9274

Schedule Tee Times Online at WoodedViewGC.com

<u>2017 Green Fees</u>	<u>18 Holes</u>	<u>9 Holes</u>	<u>Cart Fees (Per Person)</u>	<u>Driving Range Buckets</u>
Weekdays	\$20.00	\$11.00	18 Holes \$14.00	Half-Bucket \$4.00
Weekends/Holidays:	\$25.00	\$14.00	9 Holes \$9.00	Full Bucket \$6.00
Junior (18 & Under):	\$10.00	\$7.00		
Senior (60+) Weekday Only:	\$15.00	\$10.00		

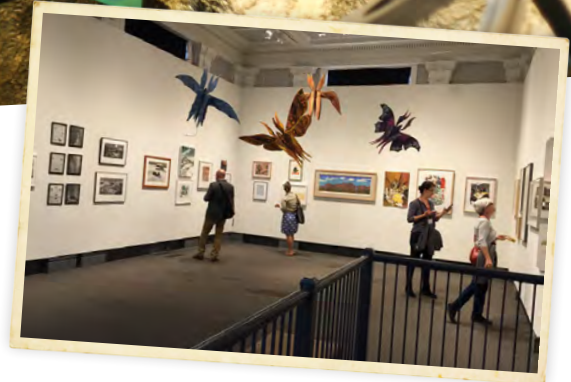
NEW Twilight Rate: Unlimited Play for \$20 Per Person (Beginning at 6pm)
Mid-Day Special: 18 Holes w/Cart for \$24 Per Person (Mon-Fri - 12-6pm)



Popular Attractions

#SoINtoFun

On the north bank of the Ohio River – just across from Louisville, Kentucky, Southern Indiana’s Clark and Floyd Counties have an eclectic mix of culture, heritage, shopping, and family fun



CARNEGIE CENTER FOR ART & HISTORY

ATLANTIS WATER PARK

Outdoor wave pool, water slides, and kiddie pool.

515 Marriott Dr.
Clarksville, IN 47129
(812) 285-0863
AtlantisWaterPark.net

ARTS COUNCIL OF SOUTHERN INDIANA

Gallery, gift shop, classes.

820 E. Market St.
New Albany, IN 47150
(812) 949-4238
ArtsCouncilSI.com

BASS PRO SHOPS

951 E. Lewis and Clark Pkwy.
Clarksville, IN 47129
(812) 218-5500
BassPro.com

BELLE OF LOUISVILLE AND SPIRIT OF JEFFERSON*

Take a sightseeing cruise down the Ohio River upon the Belle of Louisville; at 102 years old, this paddlewheel-driven steamboat is a National Historic Landmark.

401 West River Rd.
Louisville, KY 40202
(502) 574-2992
(866) 832-0011
BelleOfLouisville.org

BIG FOUR BRIDGE AND BIG FOUR STATION PARK

Walk the bridge that connects two cities in two states. Open daily to pedestrians and cyclists. Park features pavilion, playground and is used for special events.

304 Mulberry St.
Jeffersonville, IN
(812) 285-6440
JeffMainStreet.org

CARNEGIE CENTER FOR ART & HISTORY

Art gallery and exhibits on New Albany’s role in the Underground Railroad, including the story of escaped slave Lucy Higgs Nichols, who became a Civil War nurse.

201 East Spring St.
New Albany, IN 47150
(812) 944-7336
CarnegieCenter.org

CHARLESTOWN FAMILY ACTIVITIES PARK

1000 Park St.
Charlestown, IN 47111
(812) 256-3422
CityOfCharlestown.com/parks/family-activities-park/

CHURCHILL DOWNS*

Home of the Kentucky Derby and live horse racing. Seasonal.

700 Central Ave.
Louisville, KY 40208
(502) 636-4400
ChurchillDowns.com

CLARK CABIN

Imagine life in the 1700s at the recreated home of Revolutionary War General George Rogers Clark.

1102 W. Harrison Ave.
Clarksville, IN 47129
(812) 280-9970
FallsOfTheOhio.org

CLARKSVILLE COVE

Open Seasonally – Call for Hours

Family Aquatic Center
800 S. Clark Blvd.
Clarksville, IN 47129
812-280-2095
812-283-5313 (Out of Season)
ClarksvilleParks.com

CLARKSVILLE LITTLE THEATRE

Classic theater performances are held in the nation’s oldest continuously operating community theater.

301 East Montgomery Ave.
Clarksville, IN 47129
(812) 283-6522
ClarksvilleLittleTheatre.org

*Nearby attraction
**Hours vary, please call ahead

**CULBERTSON MANSION
STATE HISTORIC SITE**

Take a guided tour of William Culbertson's luxurious mansion to learn about his family's life and philanthropy. Events include a haunted house, murder mystery dinners, and Victorian teas.

914 East Main St.
New Albany, IN 47150
(812) 944-9600
[IndianaMuseum.org/
Culbertson-mansion-state-historic-site](http://IndianaMuseum.org/Culbertson-mansion-state-historic-site)

**DERBY DINNER
PLAYHOUSE**

Year-round dinner theater featuring the best of Broadway musicals and comedies. Full service all-American buffet.

525 Marriott Dr.
Clarksville, IN 47129
(812) 288-8281
DerbyDinner.com

**DIVISION STREET
SCHOOL****

Restored 19th-century school preserving local African-American history. Seasonal.

1803 Conservative St.
New Albany, IN 47150
(812) 941-0820

**EVAN WILLIAMS
BOURBON EXPERIENCE***

Hear and taste the legacy of Evan Williams, Kentucky's first commercial distiller, at this artisanal distillery's guided tours and bourbon tastings.

528 W. Main St.
Louisville, KY 40202
(502) 584-2114
EvanWilliamsBourbonExperience.com

FISHERMAN'S WHARF

Jeffersonville's marina has 15 docks accommodating 30 boats on a first-come, first-serve basis.

Ohio River Scenic Byway
Jeffersonville, IN 47130

**FLOYD COUNTY
HISTORICAL SOCIETY
PADGETT MUSEUM****

Artifact exhibits on Floyd County's Civil War history.

509 West Main St.
New Albany, IN 47150
(812) 949-2551

**THE FRAZIER HISTORY
MUSEUM***

Interactive exhibits, live performances and special events bring 1,000 years of history to life.

829 West Main St.
Louisville, KY 40203
(502) 753-5663
FrazierMuseum.org

**HIDDEN HILL NURSERY &
SCULPTURE GARDEN**

This one-of-a-kind nursery offers rare trees, plants, and whimsical garden art sculptures. Seasonal.

1011 Utica-Charlestown Rd.
Utica, IN 47130
(812) 282-0524
HiddenHillNursery.com



CULBERTSON MANSION

**ReDiscover Historic
SQUIRE BOONE
CAVERNS**

**NEW
TOUR**

**OPENING
MAY 2017**

- New entrance! New bridges! New corridors!
- Breathtaking underground scenes never before seen by the public!
- More views of rare subterranean waterfalls and rushing streams!

With the purchase of a caverns tour, receive a **FREE BAG OF MINE ROUGH** for the gem mining sluice

COUPON MUST BE PRESENTED TO RECEIVE FREE MINE ROUGH

Squire Boone Caverns

Located 13 miles south of Corydon on Squire Boone Caverns Rd.
888-934-1804 • www.squireboonecaverns.com

Expires 12/31/17

SIW17

Living, growing ecosystem filled with natural wonders

Largest rimstone dam in the U.S.

Boone's Mill, c. 1804
Indiana Historic Site

Zip line tour through the forest treetops

- Rock Shop, one of the Midwest's largest
- Caverns discovered in 1790 by brothers Squire and Daniel Boone
- Boone's Kitchen & Candy Shop
- Picnic areas and playground
- Authentic lye soap-making and candle-dipping
- Gem mining sluice

Certificate of Excellence

HISTORIC TUNNEL MILL**

Hands-on Early American history education center featuring the 200-year-old National Register Landmark, and John Work House. Check website for open dates.

3709 Tunnel Mill Rd.
Charlestown, IN 47111
(812) 606-1264
HistoricTunnelMill.org



KENTUCKY DERBY

PHOTO BY CHRISTOPHER FRYER

HORSESHOE CASINO SOUTHERN INDIANA *

11999 Casino Center Dr.
Elizabeth, IN 47117
(812) 969-6000
(866) 676-7463
Horseshoe-Indiana.com

HOWARD STEAMBOAT MUSEUM

This 22-room, Victorian mansion looks back to the great steamboat era whose ships plied inland waterways and were built in Jeffersonville's Howard Shipyards.

1101 East Market St.
Jeffersonville, IN 47130
(812) 283-3728
HowardSteamboatMuseum.org

HUBER'S ORCHARD, WINERY AND VINEYARDS

19816 Huber Rd.
Starlight, IN 47106
(812) 923-9463
HuberWinery.com

Indiana's largest estate bottled winery, newly expanded Starlight Distillery and event center is open year-round.

JOE HUBER'S FAMILY FARM & RESTAURANT

Country-style dinners, children's play areas, gift shop, u-pick fruits, vegetables, and hand-crafted gifts. Groups welcome.

2421 Engle Rd.
Starlight, IN 47106
(812) 923-5255
JoeHubers.com

KENTUCKY DERBY MUSEUM*

Enjoy tours of historic Churchill Downs. Visit two floors of high-tech exhibits, watch "The Greatest Race," ride in a 'race' and meet the resident horses.

704 Central Ave.
Louisville, KY 40208
(502) 637-1111
DerbyMuseum.org

KENTUCKY KINGDOM AND HURRICANE BAY*

More than 60 exciting rides and attractions, including five world-class rollercoasters! New for 2017 is "Eye of the Storm," a 7-story, high-speed thrill ride.

937 Philips Ln.
Louisville, KY 40209
(502) 813-8200
KentuckyKingdom.com

*Nearby attraction

**Hours vary, please call ahead

Have you discovered yet?

DISCOVER
our new multimedia Discovery Center

ENJOY
time with family and friends

EXPLORE
the beauty of nature as you hike or bike

EXPERIENCE
all Harrison County Parks has to offer

Harrison County
DISCOVERY Center

NEW!
Located on the square in Historic Corydon, IN

\$2 Off CFCVB17
Discovery Center Admission
Adult admission through 12/31/17 with this coupon. Limit 4 people.

HarrisonCountyParks.com

Sapphire
ON SPRING
BOUTIQUE

Women's and Children's Clothing, Accessories, and More

**326 Spring St.
Jeffersonville, IN 47130
812-920-0017**

KENTUCKY SCIENCE CENTER*

Explore three floors of interactive exhibits. You'll find science fun for the whole family and a four-story digital theater.

727 West Main St.
Louisville, KY 40202
(502) 560-7128
KyScienceCenter.org

LOUISVILLE SLUGGER MUSEUM & FACTORY*

Interactive fun and factory tours. Named "one of the greatest sports museums in the world" by Forbes.com.

800 West Main St.
Louisville, KY 40202
(877) 775-8443
SluggerMuseum.com

LOUISVILLE ZOO *

Home to more than 1,700 animals on 134 beautiful botanical acres.

1100 Trevilian Way
Louisville, KY 40213
(502) 459-2181
LouisvilleZoo.org

MUHAMMAD ALI CENTER*

Multicultural institute with an award-winning museum dedicated to the life of Muhammad Ali.

144 North Sixth St.
Louisville, KY 40202
(502) 584-9254
AliCenter.org

PAUL W. OGLE CULTURAL & COMMUNITY CENTER

Performance venue includes theater productions, concerts, dance and music.

4201 Grant Line Rd.
New Albany, IN 47150
(812) 941-2525
OgleCenter.com

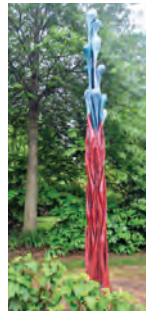


**BIG FOUR STATION PARK
JEFFERSONVILLE FARMERS' MARKET**

*Nearby attraction

**Hours vary, please call ahead

EIGHT ACRES OF RARE PLANTS AND GARDEN WHIMSY!



**FREE
ADMISSION**

1011 Utica-Charleston Rd., Utica, IN • 812-282-0524 SEE MAP AT HIDDENHILLNURSERY.COM

RIVER RUN FAMILY WATER PARK

New Albany's state-of-the-art aquatic center where families can enjoy waterslides, a lazy river, a steamboat water feature, and a toddler-sized pool.

224 W. Daisy Ln.
New Albany, IN
(812) 948-5380
NaRiverRun.com

SCHIMPF'S CONFECTIONERY

Live candy making demonstrations show visitors how candy was made by hand for more than 125 years at this historic family-owned confectionery.

347 Spring St.
Jeffersonville, IN 47130
(812) 283-8367
Schimpffs.com

*Nearby attraction

**Hours vary, please call ahead

SCRIBNER HOUSE**

Open by appointment, this is New Albany's oldest surviving building. Built in 1814 by city founder, Joel Scribner, it was the city's first frame house.

State and Main Streets
New Albany, IN 47150
(812) 949-1776
ScribnerHouse.org

SPORTSDROME SPEEDWAY

Sportsdrome Speedway is the only asphalt track in Kentuckiana to feature oval action and figure 8 racing.

1207 US HWY 31
Clarksville, IN 47129
(812) 282-7551
SportsDromeOnline.com

VINTAGE FIRE MUSEUM AND SAFETY EDUCATION CENTER

This nationally-known collection of fire engines and artifacts tells the story of firefighting in the U.S. since the 1700's. Buses welcome.

723 Spring St.
Jeffersonville, IN 47130
(812) 282-4705
VintageFireMuseum.org

WHEEL FUN RENTALS*

Bicycle and Segway rentals next to the Big Four Pedestrian and Cycling Bridge.

1001 E. River Road
Louisville, KY 40202
(502) 589-2453
WheelFunRentals.com

WIDOW'S WALK ICE CREAMERY AND BICYCLE RENTALS

Open spring through fall, this charming ice creamery overlooking the Ohio River offers treats and bicycle rentals.

415 East Riverside Dr.
Clarksville, IN 47129
(812) 285-8850
WidowsWalkIceCreamery.com

Share your #SoIN pics with us!



[Pinterest.com/SoINTourism](https://www.pinterest.com/SoINTourism)



VINTAGE FIRE MUSEUM

A MASTERPIECE OF VICTORIAN ARTISTRY

20,000 sq-foot Mansion with hand-painted ceilings and an ongoing restoration of the highest quality, returning the home back to its Gilded Age grandeur. Interprets the lifestyles of the 19th century, from the family of Indiana's wealthiest man to their servants, and featuring a legacy of benevolence seldom seen.

Guided tours offered year-round, hours vary by season.

Rental facilities, quality events and programs.

Tour rates \$10 for adults, \$8 for seniors, \$5 for children.

914 East Main Street, New Albany, IN 47150

www.indianamuseum.org/explore/culbertson

812.944.9600



UNCOVER INDIANA'S SECRETS



CULBERTSON MANSION
INDIANA STATE MUSEUM
HISTORIC SITE • NEW ALBANY

Where to Stay

Just across from Louisville, Kentucky, Southern Indiana lodging choices range from full- and limited-service hotels to bed and breakfast inns or campgrounds.



BEST WESTERN PLUS
NEW ALBANY

- BREAKFAST INCLUDED
- POOL
- FREE WI-FI
- PETS

Hotels & Motels

Best Western Green Tree Inn	1425 Broadway St.	Clarksville, IN 47129	(812) 288-9281	BestWesternGreentreeInn.com	🏠 🏊 📶 🐾 *
Best Western Plus New Albany	411 West Spring St.	New Albany, IN 47150	(812) 945-2771	BestWestern.com	🏠 🏊 📶
Candlewood Suites Louisville North	1419 Bales Ln.	Clarksville, IN 47129	(812) 284-6113	CandlewoodSuites.com	🏠 📶 🐾
Clarion Hotel & Conference Center Louisville North	505 Marriott Dr.	Clarksville, IN 47129	(812) 283-4411	ChoiceHotels.com/hotel/IN043	🏠 📶 🐾
Cobblestone Hotel and Suites	2201 Grace Ave.	Charlestown, IN 47111	(812) 256-5400	StayCobblestone.com/InCharlestown	🏠 🏊 📶 🐾 *
Days Inn and Suites	354 Eastern Blvd.	Jeffersonville, IN 47130	(812) 288-7100	WyndhamHotels.com	🏠 📶 🐾
Days Inn & Suites Sellersburg	363 Triangle Drive	Sellersburg, IN 47172	(812) 246-6332	WyndhamHotels.com	🏠 📶 🐾
Fairfield Inn & Suites Louisville North	619 North Shore Dr.	Jeffersonville, IN 47130	(812) 280-8220	Marriott.com/SDFJF	🏠 🏊 📶
Hampton Inn Louisville North	1501 Broadway St.	Clarksville, IN 47129	(812) 280-1501	Hampton-Inn.com/hi/in-clarksville	🏠 🏊 Seasonal 📶
Holiday Inn Express New Albany	506 West Spring St.	New Albany, IN 47150	(812) 944-4600	IHG.com/HolidayInnExpress	🏠 🏊 📶
Hawthorn Suites by Windham	703 North Shore Dr.	Jeffersonville, IN 47130	(812) 280-8200	WyndhamHotels.com	🏠 🏊 📶 🐾
Motel 6 Louisville North	2016 Hospitality Way	Jeffersonville, IN 47130	(812) 283-7703	Motel6.com	🏠 🏊 🐾
Quality Suites	360 Eastern Blvd.	Jeffersonville, IN 47130	(812) 282-2100	ChoiceHotels.com/indiana/Jeffersonville/quality-inn-hotels/in198	🏠 📶 🐾
Quality Inn and Suites Sellersburg	111 Enterprise Way	Sellersburg, IN 47172	(812) 246-1200	ChoiceHotels.com/indiana/sellersburg/quality-inn-hotels/in096	🏠 🏊 📶
Ramada Sellersburg Louisville North	360 Triangle Dr.	Sellersburg, IN 47172	(812) 246-3131	Ramada.com	🏠 🏊 📶 🐾
Red Roof Inn	1079 North Luther Road	Georgetown, IN 47122	(812) 923-0441	RedRoof.com/property/Georgetown/IN47122/~RR1447/	🏠 📶 🐾
Sheraton Louisville Riverside Hotel	700 West Riverside Dr.	Jeffersonville, IN 47130	(812) 284-6711	SheratonLouisville.com	🏠 📶 🐾
Suburban Extended Stay	1620 Leisure Way	Clarksville, IN 47129	(812) 283-9696	SuburbanHotels.com/hotel-clarksville-indiana-IN269	📶 🐾
Value Inn	2012 Hospitality Way	Jeffersonville, IN 47130	(812) 282-8000		📶
Travelodge (Sellersburg)	7618 Old State Road 60	Sellersburg, IN 47172	(812) 246-4451	Travelodge.com	🏠 🏊 📶 🐾
Value Place	1811 Independence Court	Clarksville, IN 47129	(812) 285-0100	ValuePlace.com	📶

* Contact property for pet policies

Bed & Breakfast

1877 HOUSE COUNTRY INN

Located on 2.5 scenic acres, the cottage has a bedroom with a queen bed, a living room with queen sofa bed, microwave, coffee maker, refrigerator, private bath with jacuzzi tub & hand-held shower. A 6-foot privacy fence surrounds the cottage garden with brick patio, table and chairs.

2408 Utica-Sellersburg Rd.
Jeffersonville, IN 47130
(888) 284-1877

MARKET STREET INN

Seven guest rooms and a rooftop patio within walking distance from the Big Four Bridge and downtown Jeffersonville.

330 W. Market St.
Jeffersonville, IN 47130
(812) 285-1877
InnOnMarket.com

STARLIGHT COUNTRY CABIN

An original log home built in the late 1830s and lovingly restored as a vacation cabin.

7814 St. John Rd.
Floyds Knobs, IN 47119
(502) 645-2332
StarlightCountryCabin.com

THE PEPIN MANSION

On historic "Mansion Row" in New Albany, this 1851 mansion has four guest rooms. It also hosts weddings, receptions.

1003 E. Main St.
New Albany, IN 47150
(812) 725-9186
ThePepinMansion.com



THE PEPIN MANSION



MARKET STREET INN



Location! Location! Location!

Best Western – Green Tree Inn is THE place to stay!

Located in Clarksville, Indiana, just minutes from Downtown Louisville.

Our newly renovated rooms include a well-lit oversized desk area, sofa, refrigerator and microwave, a data-port connection with high-speed Internet access; toll free 800 and local calls, complimentary USA today and complimentary hot breakfast.



1425 Broadway Street
Clarksville, Indiana 47129
Toll Free: 800-780-7234
Direct Line: 812-288-9281

Come Stay With US!!!



Groups Sports & Meetings

GROUP TOURS

Want creative options for your group tour experience? Whether you have a set itinerary or you're looking for new ideas, call on us to help make your tour a smashing success!

BRING YOUR TEAM OR SPORT

If you're in Southern Indiana for a sporting event, why not book a tournament? We can help coordinate hotel room blocks, give you ideas on tournament banquet locations, and provide other resources.

MEETINGS MEAN BUSINESS

The Clark-Floyd Counties Convention & Tourism Bureau can help you find facilities to suit your needs.

Contact our sales team at:
(812) 282-6654

Voted Best Bottle Shop in Indiana



Going above and beyond what you expect from a traditional liquor store for 40 years.



Over 900 beers in stock and counting and counting!



Keg Liquors

617 East Lewis & Clark Pkwy.
Clarksville, IN
812.283.3988

4304 Charlestown Road
New Albany, IN
812.948.0444

www.kegliquors.com

Wooden Glen Retreat & Conference Center

Wooded Glen is the only dedicated retreat center in Clark and Floyd Counties and offers 50 rooms, conference rooms, and dining in a secluded rural setting.

2602 Hebron Church Rd.
Henryville, IN 47126
(812) 294-3770
WoodedGlen.com





What's going on?

THUNDER OVER LOUISVILLE

January/February/March

CHOCOLATE LOVERS WEEKEND

Sample Huber wines paired with locally made chocolates and enjoy live music.

Huber Orchard, Winery & Vineyards, Starlight
HuberWinery.com

HUMANA'S FESTIVAL OF NEW AMERICAN PLAYS*

This internationally acclaimed event is known for introducing a variety of plays to the American public.

Actors Theatre, Louisville
 March 1-April 9, 2017
ActorsTheatre.org

THE ADDAMS FAMILY

A macabre Broadway musical comedy is based on the well-known cartoon and TV characters.

Derby Dinner Playhouse, Clarksville
DerbyDinner.com

CHILI & BREW BONANZA

Chili and beer tastings, live music, silent auction.

Kye's II, Jeffersonville
 March 2, 2017
JeffMainStreet.org

KINDLE THE FLAME

Enjoy a fire-red Valentine's Day with your sweetheart, complete with champagne, a cozy seat aboard a vintage fire engine, and a photo to remember your experience.

Vintage Fire Museum, Jeffersonville
VintageFireMuseum.org

April/May

RAPTOR DAY

Learn about birds of prey, bird watching, and view birds in their habitats with telescopes.

Charlestown State Park, Charlestown
 April 15, 2017
FallsOfTheOhio.org/special_events.html

FEATURED

THUNDER OVER LOUISVILLE

Enjoy the best view of Thunder Over Louisville in SoIN, on the north bank of the Ohio River. Watch one of America's largest fireworks shows.

along the Ohio River, Jeffersonville and Clarksville, and Louisville
 April 22, 2017
KDF.org

STARLIGHT STRAWBERRY FESTIVAL

Festival includes craft booths, games, food, and of course strawberries at this annual tradition.

St. John the Baptist Catholic Church, Floyds Knobs
StarlightStrawberryFestival.com

BOOMTOWN BALL

Music on an outdoor stage plus an open-air bazaar featuring regional and local vendors with records, vintage items, fine arts and crafts.

New Albany Riverfront Amphitheater
 May 25-29, 2017
NewAlbanyCityHall.com

KENTUCKY DERBY FESTIVAL

Leading up to the Kentucky Derby, you'll find two weeks of fun with the Great Steamboat Race, the Pegasus Parade, and the Balloon Fest, and more.

Along the Ohio River, Jeffersonville and Clarksville, and Louisville
 April 8-May 5, 2017
KDF.org

KENTUCKY DERBY*

The top 20 Thoroughbreds compete in the 143rd annual "greatest two minutes in sports."

Churchill Downs, Louisville
 May 6, 2017
KentuckyDerby.com

Events subject to change; please check with event organizers when planning your trip. * Nearby Events

FEATURED

ABBEY ROAD ON THE RIVER

Groove to the music and 60's legends with this Beatles-inspired music festival along the Ohio River.

Various locations near Big Four Station Park in Jeffersonville
May 25-29, 2017
AROTR.com

June/July

FEST OF ALE

Celebrating all things craft brew – and wine! Proceeds benefit WHAS Crusade for Children.

New Albany Riverfront Amphitheater
KegLiquors.com/Fest_of_Ale.html

CLARK DAYS

George Rogers Clark, Revolutionary War hero and founder of Clarksville and Louisville is honored. The event features re-enactors, guest speakers, and pioneer activities.

George Rogers Clark Home Site, Clarksville
June 24-25, 2017
FallsOfTheOhio.org

ICE CREAM SOCIAL AT THE DIVISION STREET SCHOOL

Division Street School, one of the first elementary schools for African-American children in the region, will host an old fashioned ice cream social.

Division Street School, New Albany

FORECASTLE FESTIVAL*

Held along the Ohio River, this weekend event draws tens of thousands for one of the most anticipated summer music festivals.

Waterfront Park, Louisville
July 14-16
ForecastleFest.com

August/September

ART IN SPEED PARK

This growing juried art show features fine artists, artisans and musical talents. Children's workshops and performing art demonstrations, plus food and wine selections.

Speed Park, Sellersburg
ArtInSpeedPark.com



ABBEY ROAD ON THE RIVER



OGLECENTER
PAUL W. OGLE CULTURAL & COMMUNITY CENTER
INDIANA UNIVERSITY SOUTHEAST

Southern Indiana's Center for the Performing and Visual Arts
on the Campus of Indiana University Southeast in New Albany



















4201 Grant Line Road
New Albany, IN 47150

(812) 941-2525

oglecenter.com

STEAMBOAT NIGHTS

Jeffersonville's role in the historic steamboat era is center stage at this festival held each year over Labor Day weekend. Festivities include a parade, river-themed activities, food and wine tasting, artist vendor demonstrations, music, and stage performances.

Big Four Station Park,
Jeffersonville
JeffSteamboatDays.com

**DIGGING THE PAST**

This day-long festival offers hands-on archaeology and geology activities for adults and children.

Falls of the Ohio, Clarksville
September 9
FallsOfTheOhio.org

**ROCK ON WATER
CHRISTIAN MUSIC
FESTIVAL**

Enjoy local and national contemporary Christian music artists in a live concert along the Ohio River.

RiverStage, Jeffersonville
Sept. 10
RockOnWaterFestival.com

HARVEST HOMECOMING

*October***AUTUMN ON THE RIVER**

Along the banks of the Ohio River, tour the historic three-room schoolhouse and enjoy music, arts, crafts, antiques, parade, and an auction at Bethlehem's annual fest.

Old Schoolhouse Grounds,
Bethlehem
AutumnOnTheRiver.Wordpress.com

HARVEST HOMECOMING

New Albany's homecoming festival – one of Indiana's largest – with a parade, rides, entertainment, kids' events, and booths!

New Albany
Festival: October 7-15, 2017
Booth Days: October 12-15
HarvestHomecoming.com

LITERALLY, A HAUNTED HOUSE

Enter if you dare to the haunting every weekend in October, held in the Culbertson Mansion's carriage house.

Culbertson Mansion State
Historic Site, New Albany
IndianaMuseum.org/Explore/Culbertson

**JACK-O-LANTERN
SPECTACULAR***

You'll marvel at the professionally-carved jack-o-lanterns – more than 5,000 of them, grouped in themed scenes.

Iroquois Park, Louisville
JackOLanternLouisville.com

ST. JAMES ART FAIR*

Held in historic Louisville, this annual juried art fair hosts more than 700 artists.

Old Louisville, Louisville
October 6-8, 2017
StJamesCourtArtShow.com

Welcome to Our City!



Sheriff Jamey Noel

Remember: For Any Emergency, you can call 911

Clark Memorial Hospital - (812) 282-6631

Jeffersonville Police Dept. - (812) 283-6633



CLARK COUNTY SHERIFF'S OFFICE

501 E. Court Avenue • Jeffersonville, IN 47130 • 812.283.4471

November/December

SCHIMPF'S HOLIDAY CANDY MAKING DEMONSTRATIONS

Watch ribbon candy and candy canes being made just as they were in 1891 in this beloved candy store and museum.

Schimpff's Confectionery and Candy Museum, Jeffersonville
Nov. 24 & 25
Schimpffs.com

CHARLESTOWN CHRISTMAS LIGHT DISPLAY

Delight in the animated light shows synchronized to music, as well as carriage and train rides, ice skating and a parade during the Christmas season Charlestown's Greenway Park, City Square and Family a-Activities Park. Festivities begin after Thanksgiving and continue through December.

Charlestown
CityOfCharlestown.com

CHRISTMAS AT THE CULBERTSON MANSION

See the elegant 1860s mansion decorated for Christmas during the Culbertson's Christmas events: the annual Open House event and its whodunit murder mystery dinner.

Culbertson Mansion State Historic Site, New Albany
IndianaMuseum.org/Explore/Culbertson

SHOP, DINE & SKATE

Enjoy ice skating at a pop up rink in "hip-storic" downtown Jeffersonville. Find unique gifts in specialty boutiques and dine at local restaurants in Jeffersonville's quaint downtown.

Downtown Jeffersonville
JeffMainStreet.org

Events subject to change; please check with event organizers when planning your trip. * Nearby Events

NEW ALBANY'S JINGLE WALK, ORNAMENT WALK, AND HOLIDAY FEST

Stroll through historic New Albany's uptown and downtown during the holiday season while you sample wine, shop local merchants, and watch the Christmas tree lighting in Bicentennial Park.

Uptown and Downtown New Albany
DevelopNA.org

LIGHTS UNDER LOUISVILLE*

The only underground light show of its kind, this holiday light spectacular uses 500 characters and one million points of light.

Louisville Mega Cavern, Louisville
LouisvilleMegaCavern.com



ART IN SPEED PARK



7613 OLD STATE ROAD 60, SELLERSBURG, IN 47172 - 812-246-9339



- DRIVE-THRU WINDOW SERVICE
- BREAKFAST & LUNCH
- ESPRESSO, CATERING & DELIVERY
- BOXED LUNCH & DELIVERY AVAILABLE
- MEETING ROOM/FACILITY RENTAL WITH PREPARED MEALS
- WIRELESS INTERNET

HOURS: Monday through Friday 6:00 AM to 2:00 PM
Saturday and Sunday 7:00 AM to 2:00 PM
www.cricketscateringcafe.com



shop.eat.explore

Visit 1si.org.

Click on member directory.

Find the best of Southern Indiana and Metro Louisville.

One Southern Indiana

business resources
economic development
advocacy

1si.org



RIVERSTAGE, JEFFERSONVILLE

Summer Concert Series

Every summer you can listen to live music and watch family-friendly movies in SoIN. From local to national bands, you'll find a wealth of entertainment for your weekend getaway.

JEFFERSONVILLE

RiverStage
JeffParks.org/The-River-Stage

Warder Park
JeffMainStreet.org/Concerts-in-the-park

NEW ALBANY

Bicentennial Park
CityOfNewAlbany.com

CLARKSVILLE

Gateway Park,
ClarksvilleParks.com/Gateway-park.html

STARLIGHT

Also, watch for concerts at Huber's Orchard, Winery, & Vineyards and Joe Huber's Family Farm in Starlight!

For the latest info about what's happening in SoIN, follow us on Facebook and Twitter!



[Facebook.com/GoSoIN](https://www.facebook.com/GoSoIN)



[Twitter.com/GoSoIN](https://twitter.com/GoSoIN)

Visiting?

Let the News and Tribune, Southern Indiana's local newspaper, help you.

View our eEdition for activities, local news and much more during your stay in SoIN.

Only 99¢

Simply visit our website:
newsandtribune.com/subscriptions



812-283-6636
 221 Spring St.
 Jeffersonville, IN 47110

812-944-6481
 318 Pearl St., Suite 100
 New Albany, IN 47150

nt News and Tribune
 Community Focused. Community Minded.



CENTERED ON YOU



IMMEDIATE CARE FOR FEVERS, SPRAINS AND LIFE'S LITTLE EMERGENCIES

When a cold or the flu has you down or a sprain has you off your game, Baptist Health's Urgent Care centers offer walk-in convenience and exceptional care every day. With two convenient locations, we're right where you need us most – especially when your doctor's office is closed. So, when an illness or injury sneaks up on you, there's no need to wait. **To check in ahead of time or to learn more about online check-in, visit [BaptistHealthFloyd.com/online-check-in](https://www.BaptistHealthFloyd.com/online-check-in).**

NEW EXTENDED 12-HOUR DAYS

7 days a week: 8 a.m.–8 p.m.
Closed on most major holidays

FLOYDS KNOBS | 812.923.6336
800 Highlander Point
Floyds Knobs, IN 47119

NEW ALBANY | 812.949.1577
5130 Charlestown Road, Suite 2
(near County Line Road)
New Albany, IN 47150



BAPTIST HEALTH®

URGENT CARE



[BaptistHealthFloyd.com](https://www.BaptistHealthFloyd.com)



Where to eat

FEAST BBQ, NEW ALBANY

American

BRISTOL BAR & GRILLE

www.BristolBarAndGrille.com/

BROOKLYN & THE BUTCHER

www.BrooklynAndTheButcher.com/

THE EXCHANGE PUB + KITCHEN

www.ExchangeForFood.com/

GOSPEL BIRD

<http://www.OrderTheBird.com/>

H.M. FRANKS, AN O'SHEA'S PUB

<http://OSheasLouisville.net/>

HUBER'S ORCHARD, WINERY & VINEYARDS, STARLIGHT DISTILLERY

www.HuberWinery.com

JOE HUBER'S FAMILY FARM & RESTAURANT

<http://JoeHubers.com/>

NEIL & PATTY'S FIRESIDE GRILL

www.FiresideSellersburg.com/

PORTAGE HOUSE

<http://eatportagehouse.com/>

RIVER CITY WINERY

www.RiverCityWinery.biz/

TOAST ON MARKET

www.ToastOnMarket.com/

WILD EGGS

<http://WildEggs.com/>

Asian

DRAGON KING'S DAUGHTER (SUSHI AND JAPANESE)

<http://dragonkingsdaughter.com/>

RICE BOWL (KOREAN AND JAPANESE)

RiceBowl.me

Barbecue

FEAST BBQ

www.FeastBBQ.com/

SHAWN'S BBQ

www.ShawnsSouthernBBQ.com/

Brew pubs

DONUM DEI BREWERY

www.DonumDeiBrewery.com/

FLOYD COUNTY BREWING COMPANY

www.FloydCountyBrewing.com/

NEW ALBANIAN BREWING COMPANY

Two locations.

<http://NewAlbanian.com/>

Burgers

BIG FOUR BURGERS + BEER

Two locations.

www.BigFourBurgers.com/

THE RED YETI

<http://beerlist.us/>

Cafés

THE HUB

www.HubCafe.net/

ORANGE CLOVER KITCHEN & MORE

<http://OrangeCloverKitchen.com/>

SEEDS & GREENS NATURAL MARKET & DELI

www.SeedsAndGreensMarket.com/



OLIVE LEAF BISTRO, JEFFERSONVILLE

Cuban

HABANA BLUES
[http://HabanaBluesTapas
 Restaurant.net/](http://HabanaBluesTapasRestaurant.net/)

Italian

COME BACK INN
www.ComeBackInn.net/

Mediterranean

ALADDIN'S CAFÉ
<http://TheAladdinsCafe.com/>

OLIVE LEAF BISTRO
<http://OliveLeafBistro.com>

Mexican

ISRAEL'S DELICIAS DE MEXICO
 1515 E. Market St., New Albany
 812-725-9139

HUNGRY FOR MORE?
 Visit [GoSoIN .com](http://GoSoIN.com)



PORTAGE HOUSE, JEFFERSONVILLE



*Share your #SoIN
 Pics with us!*

-  [Facebook.com/GoSoIN](https://www.facebook.com/GoSoIN)
-  [Twitter.com/GoSoIN](https://twitter.com/GoSoIN)
-  [Pinterest.com/SoINTourism](https://www.pinterest.com/SoINTourism)



**Evan
Williams**
Bourbon
EXPERIENCE®



**EVERY TOUR
ENDS WITH A
SPLASH**



VISIT US
528 West Main Street
Louisville, KY

EvanWilliams.com/Visit