



Route 7
LONG ROAD DISTILLERS
 Stops at Leonard & Quarry



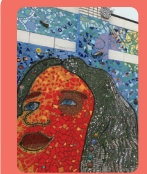
Route 7
THE MITTEN BREWING CO.
 Stops at Leonard & Quarry

7

LEONARD

TURNER
 SCRIBNER

7



Route 15
GRAND RAPIDS CHILDREN'S MUSEUM
 Stops at Fulton & LaGrave

15

COLLEGE



Route 15
NANTUCKET BAKING CO.
 Stops at College & Lyon

15

LEONARD

FOUNTAIN

FULTON

6

UNION



Route 6
TERRA
 Stops at Lake Drive & Atlas

LAKE DR



Route 6
BREWERY VIVANT
 Stops at Lake Drive & Dwight

131



By Brittany Schlacter
 Photos by SOLACE Magazine,
 City of Grand Rapids Planning Department and DK

RIDE THE RAPID TO EXPLORE GRAND RAPIDS

Good Eats, Craft Brews & Spirits and Family-Friendly Fare

Grand Rapids has one of the nation's best public transportation systems.

It's easy to ride The Rapid to our city's most popular bars, restaurants and attractions. Passes and schedules are available at the front desk of your hotel, and the bus stop is just a short walk outside your lobby entrance.

We are proud to rank as one of America's top cities for fun and recreation. That's because we combine the cultural diversions of a cosmopolitan city with the spectacular recreation of an outdoor paradise.

Riding The Rapid to explore Grand Rapids' treasures is part of the joy that comes with visiting our city. The Rapid is home to Michigan's first bus rapid transit line, the Silver Line. Our ridership has nearly tripled since 2000, and our daily weekday ridership averages 43,000.

The ease, cleanliness, on-time service and affordability of The Rapid are among the reasons why we are recipients of the American Public Transportation Association's Outstanding Mid-Sized Public Transportation System in North America Awards in 2003 and 2014.

Here are just a few examples of where The Rapid can take you (see map at left for more details):

Brewery Vivant

Love Belgian- and French-inspired beers? Don't miss Brewery Vivant, located in Grand Rapids' East Hills neighborhood in a gorgeous refurbished historic funeral home. The craft brews may be the foundation of the establishment, but the pub menu holds its own. Locals rave about the duck confit nachos, poutine and the steak and frites.

Bonus attraction: Brewery Vivant also happens to be the world's first LEED-certified microbrewery! While you're visiting, stop by the local art galleries and other wonderful shops in East Hills.

Terra

Terra is a locally sourced farm-to-table restaurant located in the heart of Easttown on Lake Drive. Terra boasts artisan, seasonal, healthy plates that will leave you craving more. For lunch, don't miss the hearty soups and salads. The ever-changing dinner menu often features sea scallops, pork belly and earthy wood-fired pizzas. On weekends, Terra hosts a show-stopping brunch menu.

The Mitten Brewing Co.

Head to the West Side to indulge in unique craft brews and pizza. The Mitten Brewing Co. is located in a restored Victorian-era firehouse. Taste a variety of pizza types by ordering the Pizza Flight and indulge in a Country Strong IPA or Coconut Brown Porter.

Bonus attraction: Don't miss the old-timey baseball decor. Sports enthusiasts will feel at home.

Long Road Distillers

Ride Route 7 to Grand Rapids' first craft distillery. There you'll find amazing, one-of-a-kind cocktails featuring handcrafted spirits.

Grand Rapids Children's Museum

Visit Grand Rapids' hands-on learning space for kids! Riding the bus is the perfect way to make visiting the museum even more of a memorable adventure. The entry fee for anyone ages 1-64 is just \$8.50 and \$7.50 for anyone 65-plus.

Nantucket Baking Company & More

On the edge of the historic Heritage Hill and Midtown neighborhoods you'll find a spectacular grouping of mouthwatering businesses. Drop in Nantucket Baking Company to grab a fresh baked treat or loaf of bread, Lyon Street Cafe for amazing coffee and more baked goods, and Martha's Vineyard for access to a global wine selection, as well as gourmet groceries.

Brewery Vivant

925 Cherry St., Grand Rapids
 616-719-1604 • breweryvivant.com
 Nearest bus stop: Route 6, Lake Drive & Dwight

Terra

1429 Lake Drive SE, Grand Rapids
 616-301-0998 • terra.gr.com
 Nearest bus stop: Route 6, Lake Drive & Atlas

Mitten Brewing Co.

527 Leonard St. NW, Grand Rapids
 616-608-5612 • mittenbrewing.com
 Nearest bus stop: Route 7, Leonard & Quarry
 Note: Route 7 does not run service on Sundays.

Long Road Distillers

537 Leonard St NW, Grand Rapids
longroaddistillers.com
 Nearest bus stop: Route 7, Leonard & Quarry
 Note: Route 7 does not run service on Sundays.

Grand Rapids Children's Museum

11 Sheldon Ave. NE, Grand Rapids
 616-235-4726 • grcm.org
 Nearest bus stop: Route 15, Fulton & LaGrave

Nantucket Baking Company & More

615 Lyon St NE, Grand Rapids
 616-350-9292 • nantucketbakingco.com
 Nearest bus stop: Route 15, College & Lyon

Brittany Schlacter is The Rapid's Public Outreach Coordinator of Digital Media.
 Learn more at www.ridetherapid.org.