

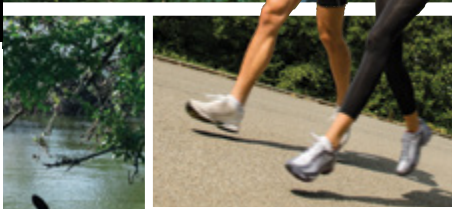
SAVINGS PASSPORT VOUCHER

Present this voucher at Simon Guest Services to receive a complimentary Savings Passport (\$5 value) featuring exclusive savings offers at participating retailers.

Visitors Guide

Run, Ride
Float, or
Climb...

there's fun
in every
direction!



JOHNSTON COUNTY
NORTH CAROLINA

1-800-441-stay

johnstoncountync.org



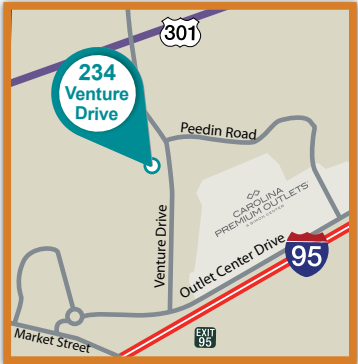
We invite you to discover and explore our destinations along the I-95 and I-40 corridors in Johnston County, North Carolina, which are often characterized with phrases as “small-town charm,” “friendly,” or “a taste of Americana.”

You will find all that and more!

We’re here to serve you...

For the latest travel information, stop by our visitor information center located in Smithfield. Our staff will assist you with promotional materials, coupons, deals around town, and information on a variety of events to enjoy while visiting the county.

The Johnston County Visitors Bureau Visitor Center is located at 234 Venture Drive, Smithfield, NC and is open Mon-Fri 8am-5pm. Additionally, visitor information may be found at several Chamber of Commerce Offices in the county or at the Carolina Premium Outlets office next to Nike, 1025 Outlet Center Drive in Smithfield.



234 Venture Drive • Smithfield, NC 27577
(919) 989-8687 • fax (919) 989-6295

1-800-441-stay

johnstoncountync.org
info@johnstoncountync.org

© 2017 Johnston County Visitors Bureau. The information in this guide is believed to be accurate at the time of printing. Information and prices are subject to change without notice. Call individual businesses for confirmation. The Johnston County Visitors Bureau assumes no responsibility for errors or omissions. Corrections are welcome.

Contents

- Plan your visit2
- Accommodations3
- Things to do
 - agri-tourism10
 - the arts12
 - history & heritage14
 - recreation16
- Transportation Services21
- Shopping22
 - Carolina Premium Outlet directory24
- Dining27
- Weddings/Special Events30
- Annual events32

Keep up with us on Facebook, Twitter, YouTube, JCVB Blog, Pinterest and Instagram!



Plan Your Visit



Our official destination guide for planning a visit to the Smithfield/Johnston County area provides you with listings of accommodations, attractions, shopping, dining, but now even more. Whether you are traveling through the state to your final vacation destination or seeking a weekend get-a-way from colder climates, we have put together suggestions for day trips, culinary trails, and girlfriend getaways to help in your planning process.



Stay in touch via our social media sites, website, and calendar for the latest news and happenings! Or call upon our staff at the Johnston County Visitors Bureau for additional information, help with group itineraries, or planning a destination wedding or special event.



facebook.com/JoCoVisitorsBureau | twitter.com/JoCoTourism
youtube.com/user/VisitJohnstonCounty/videos
pinterest.com/smithfieldnc/ | johnstoncountync.org/blog
instagram.com/visitjoco



Places to Stay



Benson

Days Inn

Located along the crossroads of major interstates I-95 and I-40, this 103 room hotel is accessible directly from Exit 79 on I-95, with very affordable rates.

202 N. Honeycutt St., Benson 27504
919-894-2031
daysinn.com/hotel/06776



Preston Woodall House

A historic experience, a romantic special event, or your most important day ever—your wedding, this bed & breakfast offers a beautiful and charming venue.

201 E. Hill St., Benson 27504
919-894-7025
woodallhouse.com



Clayton

Comfort Suites

This all suite property is in the heart of Clayton and very convenient for corporate travelers to the area.

761 Enterprise Dr., Clayton 27520
919-553-1234
comfortsuites.com/nc302



AAA Rating
 ★★★

Morning Glory Inn

This 5-guest room bed and breakfast is located in a historic home and is warm and inviting for guests.

507 E. Second St., Clayton 27520
919-550-8547
morning-glory-inn.com



Hotel Symbols Key



pet friendly



non-smoking rooms



outdoor pool



indoor pool



wifi available



indoor corridors



exercise facility



meeting facility



continental breakfast



ADA accessible

Four Oaks

Four Oaks Lodging

This motel is conveniently located off I-95 with 12 guest rooms and is pet friendly.

4606 US Hwy 301 S., Four Oaks 27524
919-963-3596

fouroakslodging.com



Travelers Inn

This 53 ground floor room motel is located off I-95, Exit-90 in close proximity to Bentonville Battlefield and Howell Woods.

97 NC Hwy 96 S., Four Oaks 27524
919-934-4194



The Dwelling Place Bed & Breakfast

This two room bed & breakfast is all non-smoking and located just south of Four Oaks on US 301.

6734 NC Hwy 301 S., Four Oaks 27524
919-963-4088



Garner (I-40, Exit 312)

Comfort Inn

This 63-room hotel is conveniently located to Clayton and Downtown Raleigh on I-40, Exit 312.

126 Cleveland Crossing Dr., Garner 27529
919-773-1110

comfort.com/nc366



Sleep Inn

This 87-room hotel is conveniently located on I-40, Exit 312 only minutes from Clayton and Downtown Raleigh.

105 Commerce Pkwy., Garner 27529
919-772-7771

sleepinn.com/nc321



Hampton Inn

This 72-room hotel is conveniently located on I-40, Exit 312 only 7 miles from Clayton and 12 miles to Downtown Raleigh.

100 Hampton Dr, Garner 27529
919-773-1977

hampton.com/hi/raleigh-clayton



Super 8

This 40-room hotel is conveniently located on I-40, Exit 312 only minutes from Clayton and Downtown Raleigh.

101 Leone Ct., Garner 27529
919-661-1991

super8garner.com



Holiday Inn Express

This 67-room hotel is conveniently located along I-440 just minutes from Clayton and Downtown Raleigh.

105 Leone Ct., Garner 27529
919-719-3415

hiexpress.com/claytonnc



WoodSpring Suites

This extended stay is a great choice for tourists looking for a hotel that offers the comforts of home while away.

142 Cleveland Crossing Dr., Garner 27529
919-779-5800

woodspring.com/wsraleighgarner



Budget Inn

This motel is conveniently located off of I-95 with 17 guest rooms and is pet friendly.

212 S. Church St., Kenly 27542
919-284-5588



Motel 6

For the mid-way overnight stop along I-95 in NC, choose this 77 room motel off Exit 106.

843 Johnston Pkwy., Kenly 27542
919-284-3800
motel6.com



Deluxe Inn

This 24 room motel is conveniently located off I-95, Exit 107 near Downtown Kenly.

403 US Hwy 301 S., Kenly 27542
919-284-3655



Quality Inn

This 60 room hotel has a convenient location for an overnight stay in Kenly
405 S. Church St., Kenly 27542
919-284-1000
qualityinn.com/nc229



Red Roof Inn

This 64 room property is located along I-95, Exit 106 adjacent to the Kenly 95 Truckstop.

1139 Johnston Pkwy., Kenly 27542
919-284-3400
redroof.com/property/RR1869/



The number one reason people visit our area is outlet shopping at Carolina Premium Outlets in Smithfield and JR Cigar in Selma – by far we are the #1 outlet shopping destination in eastern North Carolina.

For the Girlfriends Getaway Weekend Package, we have pulled together hotel discounts, museum admission coupons to the Ava Gardner Museum, chocolate treats, discounts on massages and all will be waiting for you in a gift bag when you check in! Relax, Shop, and Repeat! Come visit us often for deals and more deals!

johnstoncountync.org/girlfriends-getaway

Days Inn

This 60 room hotel is conveniently located near JR Cigar Outlet, along I-95, Exit 97.

115 US Hwy 70-A, Selma 27576
 919-965-4000
daysinn.com/hotel/26253



Luxury Inn

A 48-room exterior corridor property located on I-95, Exit 97 and close to JR Cigar.

100 Graham St., Selma 27576
 919-202-0000



Econo Lodge

This 71-room property is located near Carolina Premium Outlets and JR Cigar on I-95 at Exit 97.

1780 Outlet Center Dr., Selma 27576
 919-965-3716
econolodge.com/nc760



Masters Inn

Conveniently located for travelers on I-95, this motel has exterior corridors and a courtyard pool.

318 US Hwy 70 E., Selma 27576
 919-965-3771
mastersinn.com/smithfield.shtml



Hampton Inn

This 76 room property is located adjacent to Carolina Premium Outlets and across from JR Cigar Outlet, along I-95, Exit 97.

1695 Outlet Center Dr., Selma 27576
 919-965-6151
hampton.com/hi/selma-i95



Quality Inn

Conveniently located along I-95, this 80 room hotel is a 2014 Gold Award Winner. I-95 Exit 97.

1705 Outlet Center Dr., Selma 27576
 919-965-5200
qualityinn.com/nc145



Suburban Extended Stay Hotel

Offering everything you need to make you feel at home-kitchens, laundry, and more; this 42-room hotel is located near Carolina Premium Outlets and JR's.

1780 Outlet Center Dr., Selma 27576
 919-965-3718
suburbanhotels.com/nc767



Americas Best Value Inn

This 60 room motel along I-95, Exit 95 offers ideal accommodations, affordable rates, and a friendly 24-hour staff to help make your stay enjoyable.

197 Mallard Rd., Smithfield 27577
 919-934-7176
americasbestvalueinn.com



Baymont Inn & Suites

Enjoy a home away from home at this 40-room hotel located on I-95, Exit 95 with prime access to area attractions and restaurants.

125 S. Equity Dr., Smithfield 27577
 919-989-5901
baymontinns.com/hotel/46941



Becky's Log Cabin Motel & Restuarant

Becky's Log Cabin in Smithfield, NC serves up the best that Johnston County has to offer with unique dining and restful lodging.

2491 US Hwy 70 Bus E., Smithfield 27577

919-934-1534

beckyslogcabin.com



Best Western

This non-smoking, 57 room hotel is located just minutes away from a variety of key area attractions.

145 S. Equity Dr., Smithfield 27577

919-989-4047

bestwesternnorthcarolina.com/hotels/best-western-smithfield-inn



Comfort Inn

This 72 room hotel is ideally located on I-95, Exit 95, offering easy access to many local attractions and points of interest.

170 S. Equity Dr., Smithfield 27577

919-938-4444

comfortinn.com/nc510



Country Inn and Suites

Take an overnight break at this brand new 77-room hotel with many attractions and restaurants close by.

250 N. Equity Dr., Smithfield 27577

919-934-3411

countryinns.com/smithfieldnc



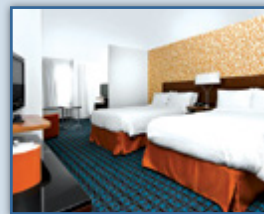
Fairfield Inn and Suites

This hotel is located next door to Carolina Premium Outlets, Outback Steakhouse, and Bob Evans. Complimentary hot breakfast is included!

809 Venture Dr., Smithfield 27577

919-938-0050

fairfieldinn.com/rdusf



Holiday Inn Express and Suites

This hotel provides affordable, comfortable & friendly accommodations for both leisure & corporate travelers while exploring the area.

190 S. Equity Dr., Smithfield 27577

919-934-3350

hiexpress.com/smithfieldnc



Sleep Inn and Suites

Experience simply stylish décor of Designed to Dream at our Platinum Awarded Sleep Inn. You're invited to see why we're ranked "Top of the Brand!"

270 N. Equity Dr., Smithfield 27577

919-209-2360

sleepinn.com/nc466



Super 8

Sample Southern hospitality at our conveniently located hotel offering handy amenities, including a microwave and refrigerator. Kitchenette suites are available for added comfort.

735 Outlet Center Dr., Smithfield 27577

919-989-8988

super8.com/smithfield



Village Motor Lodge

This motel has 101 guest rooms on an expansive lawn facing I-95, on Exit 95 and has welcomed travelers for over 60 years.

198 Mallard Rd., Smithfield 27577

919-934-7126



Hotel Symbols Key



Camping RV

Four Oaks RV Resort

This RV Park is conveniently located off of I-95, Exit 90 with 18 RV hook ups.

4596 US HWY 301 S., Four Oaks 27524
919-963-3596

fouroaksvresort.com



Raleigh Oaks RV Resort & Cottages

For families seeking a convenient "staycation" or for contractors working nearby, the resort is the perfect resolution for short term, long term and weekend stays.

527 US HWY 701 S., Four Oaks 27524
919-934-3181

raleighoaksvresort.com



Happy Trails Campground

This RV Park is conveniently located off of I-95, Exit 90 with 21 RV hook ups.

406 US HWY 701 S., Four Oaks 27524
919-410-4124



RVacation RV Park

This campground has large, level, pull-thru sites so no need to worry if you will fit. The facilities are very clean.

428 Campground Rd., Selma 27576
919-965-5923

rvacation.us



Howell Woods Environmental Learning Center

Campsites and two cabins that sleep eight each are available. This "outdoor" classroom offers hiking, biking, horseback riding, hunting, fishing and educational resources for the public's use.

6601 Devil's Racetrack Rd., Four Oaks 27524
919-938-0115

johnstoncc.edu/howellwoods



Day Spas

We all need to relax more from the daily grind of work, so... take the time to rejuvenate your mind and body at one of the following spas – even if just for the day! They offer a variety of services, facials, botanicals, and special events for you and your friends! For some extra fun these venues are great for a girl's day out, bachelorette, or pre-wedding party event."



Botanicals Salon & Spa

12450 Cleveland School Rd., Suite 102, Garner

919-553-1293

botanicals2.com

Evolve Medical Spa

101 E Market St. Suite 3C, Smithfield

919-205-1376

Evolve-medspa.com

Julie Anne's Salon & Spa

129 N. Second St., Smithfield

919-938-9131

My Girlfriends Place

121 E. Main St., Clayton

919-585-1221

mygirlfriendsplace-glamourstudio.com

Radiance Salon & Spa

41-A Glen Road, Garner

919-772-0000

radiancespaonline.com

Spa Neo Clayton

501 Gateway Dr., Clayton

919-550-9355

spaneooclayton.com

The Dupree House Salon & Day Spa

709 S. Third St., Smithfield

919-934-8805

thedupreehouse.com

day Trips

If you are the adventurous type and enjoy exploring new destinations, but don't know where to start, we have some suggestions.

Stepping Back in Time

Enjoy this “hands on” history lesson for all ages from the Bentonville Battlefield State Historic Site to the Benson Museum of Local History...and history is always best served with a little taste of local Eastern-style barbecue and sweet tea found along the way!

Sweet Sounds of Christmas

Music is such a significant part of Christmas and nothing will put you in the Christmas spirit as easily as the American Music Jubilee Christmas Show every November and December. Add in some shopping at DeWayne's, Carolina Premium Outlets and more!

Country Crossroads Trail

Johnston County is a community of rural X-roads, farms and churches where locals often meet at country stores for supplies and gossip. Enjoy these “off-the-beaten” path tours featuring Atkinson's Mill, Smith's Family Farm and a picnic at Howell Woods.

Grapes...Grains and Gardner!

Book the Sip & Stay Package and receive a gift bag on check-in with a host of offers like a taste of glamour at the Ava Gardner Museum, great food, and shopping deals! Tour local wineries, breweries, or our distillery along the Beer, Wine and Shine Trail.

If you are the adventurous type and enjoy exploring new destinations, but don't know where to start, we have some suggestions. For day trip ideas we recommend you experience an area farm to pick fresh produce, shop for antiquities in Selma, visit an historic site or museum, drive along the Carolina Campaign Civil War Trail, or take a winery, distillery or brewery tour along the new Beer, Wine, and Shine Trail.

For some more ideas, why not stroll along the Clayton River Walk and the charming downtown for shopping and sweet treats on the Sweet Day in Clayton itinerary. If you are a history buff, traverse the county on the Stepping Back in Time itinerary. You might also try the Grapes, Gardner and Great Deals day trip that combines a stop at Hinnant's Winery, the Ava Gardner Museum, and Carolina Premium Outlets.

Detail itineraries have been put together on our website for your convenience, johnstoncountync.org/day-trips. If you have a group of 15 or more, our sales office will gladly create a custom itinerary.

Just give us a call,

919-989-TOUR



Agri Tourism

THINGS TO DO

“Agriculture is our heritage and we would love to share it with you!”

If you grew up on a farm and want to reminisce, or you want to introduce your children to where local foods are produced, you will enjoy getting out and around Johnston County.

Several working farms and ag-businesses have educational options or tours: Atkinson’s Mill, Banks Miniature Horses, Smithfield Ham Shop, Smith’s Nursery and Boyette Family Farm’s Fear Farm and Lights on the Neuse events are very popular.

Johnston County now has two wineries; Gregory Vineyards and Hinnant Family Vineyards, two breweries; Deep River and Double Barley Breweries and Broadslab Distillery which offer visitors deals on the new Beer, Wine and Shine Trail. From tours, tastings, and special events held on site, stops along the trail will bring you back again and again!

Tobacco Farm Life Museum has been offering agri-tourism educational programs and special events for over 25 years and continues to enhance the site with a restored homestead, farm life exhibits, one-room schoolhouse and more.

Atkinson’s Old Grist Mill

Built in 1757, Atkinson’s Milling Co. is the only water powered grist mill operating in a four county area. The cornmeal is stone ground and is noted for its quality.

95 Atkinson Mill Rd., Selma **800-948-5707**

atkinsonmilling.com

Banks Miniature Horse Farm

Home of many fine miniature horses from outstanding bloodlines.

145 Peele Rd., Clayton **919-412-1684**

banksminiaturehorsefarm.com

Boyette Family Farms

Home of the Clayton Fear Farm, Lights on the Neuse and Boyette Vineyards. Several agritourism activities for family fun, corporate outings, birthday parties, weddings, and family reunions.

1620 Loop Rd., Clayton **919-553-0016**

boyettefamilyfarms.com

Creekside Farm, LLC

Growing top-quality blueberries providing a safe and fun experience for families to pick-your-own.

300 Pine Tree Rd., Selma **919-965-9969**

creeksidefarmberries.com

Lazy O Farm

Enjoy farm animals, hayrides, picnic areas and seasonal activities that include a maze; pumpkin patch, egg hunts, ice cream and butter making, Mining Madness, and Paintin’ Popsicles.

3583 Packing Plant Rd., Smithfield **919-934-1132**

Smithfield Ham Shop/ Johnston County Hams

Country hams, bacon, spiral sliced honey hams and other Johnston County and Goodness Grows in NC products.

204 N. Bright Leaf Blvd., Smithfield **919-934-8054**

countrycuredhams.com

Smith's Nursery and Strawberry Farm

The nursery is open year-round and the pick-your-own seasons bring families and visitors to Smith's for fresh produce and fruits, also enjoy hayrides, a millet maze, bounce houses, special events and fishing.

443 Sanders Rd., Benson 919-934-1700

smithsnurseryinc.com

Tobacco Farm Life Museum

A 6,000 sq. foot exhibit gallery displays artifacts from all aspects of farm life, including a hands-on children's exhibit. A restored farmstead depicts rural life circa the Great Depression.

709 N. Church St., Kenly 919-284-3431

tobaccofarmlifemuseum.org

Beer, Wine & Shine

Broadslab Distillery

During tours visitors will learn about the all natural, handcrafted, premium products and how they are made. Tour cost is \$12 and includes tasting and shot glass.

4834 NC Hwy 50 S., Benson 919-207-1366

broadslabdistillery.com

Deep River Brewing Co.

Johnston County's first legal brewery opened in 2013 utilizing locally grown raw materials for their craft beer.

700 W. Main St., Clayton 919-585-2296

deepriverbrewing.com

Double Barley Brewing

Taste a vast variety of craft beers in the lounge area where you will find the patron bar, founders table, high top tables and the outdoor beer garden.

3174 Hwy 70 W., Smithfield 919-934-3433

doublebarleybrewing.com

Gregory Vineyards

A great place to relax, taste some wine, or hold a wedding. Take a tour of the picturesque vineyards on this 120-acre working farm. Restaurant on site.

275 Bowling Springs Dr., Angier 919-894-7700

gregoryvineyards.com

Hinnant Vineyards

Take a tour of the vineyards or enjoy a wine tasting at the largest muscadine vineyard in the state with 75 sprawling acres. This family winery sits atop picturesque vineyards and offers 19 different award-winning wines for sale.

826 Pine Level-Micro Rd., Pine Level 919-965-3350

hinnantvineyards.com



Journey along the new Beer, Wine and Shine Trail at your leisure for a taste and tour at one of five locations around the county. Meet the operators, learn their history, enjoy a sip or flight, and tour the facilities where available. Each location is offering special deals, which may be found on the trail brochure, download it on beerwineshinetrail.com



For enjoying the performing arts in Johnston County we encourage you to frequently check our calendar of events.

See what local, regional or national acts may be in town at either the Paul A. Johnston Auditorium or Neuse Little Theatre in Smithfield, The Clayton Center in historic downtown Clayton or the W. J. Barefoot Auditorium in Benson.

For a touch of glamour and Hollywood film heritage, visit the Ava Gardner Museum in downtown Smithfield, which pays tribute to native daughter and screen legend, Ava Gardner. The museum is home to an incredible collection including scripts, photos, costumes, and personal effects of the screen legend, who was born seven miles east of Smithfield. The Tom Banks Library holds a collection of portraits painted by Dutch artist, Bert Pfeiffer, colorful and quirky, they are a favorite of visitors to the museum.

Several local art studios and the Frank Creech Art Gallery at the Johnston Community College campus in Smithfield and Clayton Visual Arts shows held in the lobby of The Clayton Center showcase local artists and their talents all year round.

For a touch of Branson and Myrtle Beach musical theatre, the Town of Selma is home to the American Music Jubilee Theatre which performs weekly with a ten-member cast. Visitors enjoy country, rock classics, and gospel...all wrapped up with a touch of comedy!

***“You will discover local art is accessible,
affordable, and very entertaining.”***



Art Galleries

Barbara A. Keen Studio

Visit the fine arts studio of artist Barbara Keen, specializing in stained glass and original paintings.

105 W. South Railroad St., Four Oaks **919-963-3190**

Boon Hill Gallery

Woodcarving designs uniquely created by chainsaws. Custom work is available.

1195 W. Edward St., Princeton **919-344-2819**

boonhillgallery.com

Frank Creech Art Gallery

Dedicated to local artist Frank Creech, this gallery at Johnston Community College rotates local artist exhibits and is open to the public.

245 College Rd., Smithfield **919-209-2112**

johnstoncc.edu/frank-creech-art-gallery

Right Angles Framing & Art

Art in the gallery changes frequently and includes custom framing, original art, pottery and jewelry by local artisans.

215 E. Main St., Clayton **919-553-2486**

janetsartshop.com

Performing Arts

American Music Jubilee/Rudy Theatre

This Branson-style production entertains visitors and groups with musical delights from '50's rock 'n' roll to classic and contemporary country, gospel, and a stirring patriotic tribute. The popular Christmas show starts early November and runs through the week of Christmas.

300 N. Raiford St., Selma **877-843-7839**

amjubilee.com

The Ice House

A family friendly venue located in the renovated, 100 year old Ice House. Traditional country music every Friday night.

112 N. Webb St., Selma **919-631-3797**

icehouseselma.com

Neuse Little Theatre

Neuse Little Theatre has been a vital part of the cultural heritage in Smithfield since 1974, performing five diverse productions a year. Visit the website for the new season's performance schedule.

104 S. Front St., Smithfield **919-934-1873**

neuselittletheatre.org

Paul A. Johnston Auditorium

Located less than 1 mile off I95 at exit 95, the facility includes a 1,007 seat performing arts auditorium. Enjoy the annual Performing Arts Concert Series, CMS 'Where Stars Get Their Start', and special presentation performances throughout the year.

245 College Rd., Smithfield **919-209-2099**

jccperformingarts.com

The Clayton Center

This 600-seat performing arts center has superb acoustic quality and provides an intimate environment for nationally touring artists.

111 E. Second St., Clayton **919-553-3152**

theclaytoncenter.com

The FlipSide

Live music on weekends, dining, outdoor seating, and open mic Karaoke.

408 E. Second St., Clayton **919-553-0123**

theflipsideclaytonnc.com

W. J. Barefoot Auditorium

Home to the Benson Little Theatre, the venue offers a 330-seat performing arts auditorium perfect for concerts, assemblies, pageants, and theatrical productions. Available for public and private rental.

303 E. Church St., Benson **919-894-3553**

townofbenson.com/2186/WJ-Barefoot-Auditorium

Comedy

The Comedy Zone

The premier comedy club in Clayton providing huge laughs every Friday-Saturday night.

8928 US Hwy 70 W., Clayton **919-879-8349**

comedyzoneclayton.com

Create Your Own Art

Pottery Camp

With our pottery, our paint and your imagination, you're sure to have a masterpiece! Available for birthdays, group outings, ladies or family night, and other special events.

12981 US Hwy 70, Clayton **919-550-3861**

potterycamp.com

Wine and Design Clayton

Painting classes taught by local artist who will lead you step-by-step in creating your masterpiece as you sip on your favorite wine.

120 Flowers Pkw, Ste. 102, Clayton **919-359-1619**

wineanddesign.com/clayton

Cinemas

Howell Theatre

Step back in time at this nostalgic four screen theatre built in the 1930's. \$4 for everyone.

141 S. Third St., Smithfield **919-934-8202**

howellmovies.com

Smithfield Cinemas

Ten screen cinema featuring Real D 3D, stadium seating, digital sound and projection, wall-to-wall screens and a game room.

175 S. Equity Dr., Smithfield **919-934-5300**

smithfieldcinemas.net



History & Heritage

THINGS TO DO

Bentonville Battlefield State Historic Site near Four Oaks was the largest land battle fought in North Carolina and the last major Confederate offensive of the war.

In addition to this site, visitors interested in Civil War heritage should consider taking a drive along the Carolina Campaign Driving Tour which includes stops at the Historic Hastings House and Johnston County Courthouse in Smithfield featuring several military statues and monuments. From Smithfield the drive heads to Selma's Historic Train Station and to downtown Clayton, where markers note negotiations saving the state capital from destruction.

The county offers several heritage museums including the Johnston County Heritage Center noted for its genealogy room, the Benson Museum of Local History which chronicles the life of area farmers and merchants, and the Tobacco Farm Life Museum, which pays tribute to the heritage of the Eastern North Carolina farm family. All are showcasing the history of rural Johnston County and its people with exhibits, educational programs and special events.

“Throughout the year each museum hosts special events and programs you will find educational for the entire family.”

Museums

Ava Gardner Museum

Home to an amazing collection of costumes, photos, and personal effects of screen legend Ava Gardner. Experience her rise from a local country girl to one of Hollywood's most famous film goddesses. Ava Gardner's grave site is located nearby in Sunset Memorial Park.

Hours Monday-Saturday 9-5, Sunday 2-5pm.

325 E. Market St., Smithfield **919-934-5830**
avagardner.org

Benson Museum of Local History

Visitors will see exhibits on a variety of subjects including farming, home life, local artists, merchants, State Singing Convention, Benson Mule Days, country doctors plus much more.

Hours: Wed-Thurs 11am-3pm, Fri-Sat 10am -3:30pm.

102 W. Main St., Benson **919-894-1266**
townofbenon.com/2209/museum

Bentonville Battlefield State Historic Site

The Battle of Bentonville, fought March 19-21, 1865, was the last full-scale action of the Civil War in which a Confederate army was able to mount a tactical offensive. Tour the nearby Harper House, which served as a makeshift hospital, driving pull-offs, Confederate cemetery and union earthworks trails. All year hours: Tuesday - Saturday 9-5 Closed Sunday - Monday.

5466 Harper House Rd., Four Oaks
910-594-0789 nchistoricsites.org/bentonvi/

Blue Gray Scenic Byway

Follow the path of General Sherman as he marched from Bentonville to Goldsboro after the battle of March 1865. Begin the winding byway at I-95, Exit 90 on US 701 South, take left turn on Devils Racetrack Road. See page 120 in the linked PDF below.

Four Oaks NC, I-95 Exit 90
ncdot.gov/download/travel/scenic_byways.pdf

Boyette Slave and Schoolhouse

This one-room log house of hand-hewn planks is held together by full dove-tail notches and pegs and is listed in the National Register of Historic Places.

NC Hwy 222, Glendale Rd., Kenly **919-284-3431** (for directions)

Hastings House c. 1854

Built in 1854 for William Hastings, the house served as the pre-battle command office for Confederate General Joseph E. Johnston as he engaged General Sherman at the Battle of Bentonville in March 1865.

200 S. Front St., Smithfield **919-934-0887**

Johnston County Heritage Center

An extensive collection of public records and genealogy materials to research the history and culture of Johnston County and its people. Rotating exhibits are located in the museum on the first floor.

241 E. Market St., Smithfield **919-934-2836**

jcheritagecenter.org

Kenly Area Historical Society

Museum on Kenly's history, its people, buildings and homes.

105 W. Second St., Kenly **919-284-3591**

Max G Crech Selma Historical Museum

This museum collects, preserves, catalogs, and displays articles of local significance to Selma, NC.

104 W. Anderson St., Selma **919-634-9202**

Selma Historic Union Station/ NC AMTRAK

This 1924 train station was completely restored in the Fall of 2002. Enjoy exhibits and memorabilia on rail history and the Town of Selma.

500 E. Railroad St., Selma **919-965-6971**

ncbytrain.org/destinations/stations.html?id=selma

Smithfield High School History Room

This school building c. 1913, showcases school memorabilia from 1903-1969. Open Mon-Fri 8am-4pm.

501 S. Second St., Smithfield **919-934-4361**

Tobacco Farm Life Museum

6,000 sq. gallery displays artifacts from all aspects of farm life, with hands-on children's exhibit and a restored farmstead, main house, detached kitchen, smoke house, tobacco barn, 1890s one-room school house and reproduction pack house. Hours: Tues-Sat 9:30am-5pm.

709 N. Church St., Kenly **919-284-3431**

tobaccofarmlifemuseum.org



North Carolina Civil War

The Carolinas Campaign



After making his famous "March to the Sea" to Savannah, Ga., in late 1864, Union Gen. William T. Sherman cast his eyes northward toward the Carolinas and a possible link-up with Gen. U.S. Grant, who then was tightening his noose around Gen. Robert E. Lee at Petersburg, Va. Travel Johnston County through a series of trail markers depicting the history of the last days of the war.

Brochures available by calling **800-441-7829**,
or follow along via the website,
[http://www.civilwartraveler.com/EAST/NC/
CarolinasCampaign.html](http://www.civilwartraveler.com/EAST/NC/CarolinasCampaign.html)

Battle of Bentonville (March 19–21, 1865)

5466 Harper House Road, Four Oaks, site offers additional driving pull-offs.

"Merging of the Armies"

Trails sign 1 mile north of the state battlefield visitor center at Harper House and Bass roads.

Village of Bentonville

Trails sign 3 miles north of the state battlefield visitor center on Devil's Racetrack Road.

Hannah's Creek Bridge

Trails sign 4 miles north of the state battlefield visitor center on Devil's Racetrack Road at the Howell Learning Center.

Confederate Line of March

Trails sign 7 miles north of the state battlefield visitor center on Devil's Racetrack Road.

Union Line of March

Trails sign at the North Carolina Highway Patrol station on Route 301, 0.5 mile north of I-95.

Hastings House

Trails sign at the corner of Front and East Johnston streets in Smithfield.

Occupation of Smithfield

Trails sign at the Johnston County Courthouse, Second and Market streets.

Mitchener Station

Trails sign at the corner of Buffalo and Old Beulah roads, 1.5 miles north from the Route 70 bypass, near Selma.

"Flag of Truce"

Trails sign in Town Park at the corner of O'Neil and Main Streets, Downtown Clayton.

Recreation

THINGS TO DO



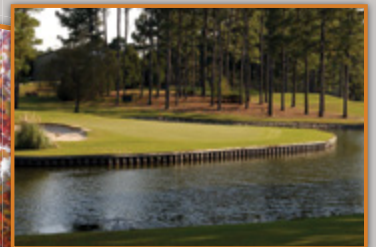
If your ambitions while on vacation include getting close to the land and enjoying the great outdoors, Johnston County has many options to consider.

If you love to golf, the county has six public and semi-private courses to play. Three are located in the Clayton and the 40/42 area: Pine Hollow, Riverwood and The Neuse Golf Club offer championship quality courses. In the central part of the county, select from Reedy Creek Golf Course, Johnston County Country Club or Cardinal Golf Course – all convenient to the I-95 corridor.

A variety of hiking, biking, bird watching, and nature activities may be enjoyed at Howell Woods Environmental Center, Neuse River Walk/Buffalo Creek Greenway, Clayton River Walk, and Clemmons Educational State Park. You may want to take a two hour leisurely canoe ride along the river or you can get active with your friends at McCoy Paintball near Princeton!

For indoor/outdoor facilities your family can enjoy a visit to the Smithfield Recreation & Aquatic Center, Smithfield Community Park or Clayton Community Center...all offer day passes for visitors.

“The weather is mild most all year long, so load up your bike or pack a picnic for a hike along the Neuse River!”



Boating, Fishing, Kayaking

Gar-Gut Canoe Landing

Located at Howell Woods landing offers an egret spot for canoes and kayaks, with no-trace camping, and fishing platform.

6601 Devil's Racetrack Rd., Four Oaks 919-938-0115
johnstoncc.edu/howellwoods

Langdon's Fishing

Two ponds available for fishing. \$2.00 per day per person, children under 10 years-old, free with adult.

664 Cornwallis Rd., Cleveland Township 919-779-0207

Neuse Adventures Canoe & Kayak Rentals

2 hour and 5 hour canoe trips along the scenic Neuse River. Groups welcome. Trips are self-guided unless a guide is reserved.

2975 Covered Bridge Rd., Clayton 919-553-3295
neuseadventures.com

Smithfield Boat Ramp

Fish from the banks of the Neuse River, and put in motorized boats, kayaks or canoes for trips on the river.

N. Front St., Smithfield 919-934-2148
smithfield-nc.com

Richardson's Bridge River Access

Launch boats into the Neuse River or fish from the bank.

1592 Richardson Bridge Rd., Princeton 919-707-0010
ncpaws.org/wrcmapbook/baa.aspx

Golf

Cardinal Country Club

A semi-private facility featuring tall pines, canals, ponds and bunkers to create a challenging course. The signature hole is #18, a 580-yard, par 5, with a dogleg left fairway.

363 Parrish Memorial Rd., Selma 919-284-3647
playcardinalcc.com

Country Club of Johnston County

Enjoy the fantastic views of Holt Lake while playing golf at this 18-hole, 6800 yard course designed by Ellis Maples. The clubhouse is available for event rentals.

694 Country Club Rd., Smithfield 919-934-4166
ccjohnstoncounty.com

Pine Hollow Golf Club

18-hole, par-71 golf course measures 6,333 yards from the back tees with Bermuda fairways. Designed by Maurice Brackett/Bob Moore enjoy the driving range, practice green and pro shop.

3300 E. Garner Rd., Clayton 919-553-4554
pinehollowgolf.com

Reedy Creek Golf Course

Designed by Gene Hamm, this 18-hole, par 72 course is built upon rolling farmland. It has been consistently rated as one of Eastern North Carolina's top public courses. Driving range, snack bar, and grill.

585 Reedy Creek Rd., Four Oaks 919-934-7502
reedycreekgolf.com

Riverwood Golf & Athletic Club

Championship 7,200 yard layout set in the beautiful rolling terrain along the Neuse River. Golf Course Designer, David Postlethwait, created 27 holes of dramatic golf to play.

400 Riverwood Dr., Clayton 919-550-1919
rgac.com/rw-golf.cfm

The Neuse Golf Club

John LaFoy designed this 7,000-yard course which is consistently ranked in the top 5 in the state for conditions and a Golf Digest 4.5 star layout. With 6 sets of tees to choose from this course accommodates any skill level.

918 Birkdale Dr., Clayton 919-550-0550
neusegolf.com

Gardens & Forests

Arboretum at JCC

Enjoy walking trails and Southern Gardens with year round blooms and greenery.

1240 E. Market St., Smithfield 919-209-2211
johnstoncc.edu/arboretum

Clemmons Educational State Forest

Enjoy trails, exhibits, and "talking trees" among a mix of pine and hardwood vegetation. This managed forest offers a pleasant rolling terrain highlighted by streams and rock out-croppings where visitors may hike and picnic. Open Mid-March to Mid-November. Closed on Mondays.

2411 Old US 70 W., Clayton 919-553-5651
ncesf.org/clemmons.html

Flower Hill

10-acre nature preserve managed by Triangle Land Conservancy protects rare populations of rhododendron, galax, and other montane plants. Pink Catawba rhododendron blooms in early May.

8954 Flower Hill Rd., Middlesex 919-833-3662
triangleland.org/what-we-do/nature-preserves/flower-hill-nature-preserve

Howell Woods Environmental Learning Center

This 2,800 acre outdoor classroom has 25 miles of unpaved roads and trails for horseback riding, mountain biking, bird watching, long-distance hiking, no-trace camping and fishing. Reservations are required for horseback riding, camping and fishing.

6601 Devil's Racetrack Rd., Four Oaks 919-938-0115
johnstoncc.edu/howellwoods

Hunting

Carolina Razorback Outfitters

Located along the Neuse river, clients experience some of the finest hunting lands that eastern North Carolina has to offer.

4230 Devil's Racetrack Rd., Four Oaks
carolinarazorbackoutfitters.com

Howell Woods Environmental Learning Center

A popular hunting spot for wild pig, whitetail deer, and wild turkey. Reservations required.

6601 Devil's Racetrack Rd., Four Oaks 919-938-0115
johnstoncc.edu/howellwoods

Town Parks and Recreation Facilities



Benson Parks & Recreation

1204 N. Johnston St., Benson

919-894-5117

townofbenison.com/2172/Facilities-Locations

Benson Municipal Park
1204 N. Johnston St.

Facilities include baseball and softball fields, batting cages, volleyball court, horseshoe pits, tennis courts, shuffleboard courts, and picnic shelter for 32-40 people.

Benson Singing Grove
406 E. Main St.

Home to the annual Benson Mule Days and the Benson State Singing Convention the park offers a stage, picnic shelter for 80-100 people with grills and a playground for children ages 2-12.

Mitchell Nance Athletic Complex & Picnic Shelter
300 N. Lee St.

Complex includes soccer fields, softball field, and playground for children ages 2-12.

P.K. Vyas Community Park
312 S. Lee St.

Facility includes adult baseball field, little league field, t-ball field, football/peewee soccer field, outdoor basketball court and playground.

Clayton Parks & Recreation/Community Center

715 Amelia Church Rd., Clayton

919-553-1550

townofclaytonnc.org/Residents/Recreation.aspx

All-Star Park
Clayton, 400 Front St.

Playground equipment, basketball court, pavilion/restroom.

Clayton Community Center
715 Amelia Church Rd.

Center includes a gymnasium, elevated walking track, multi-purpose room, pottery room, and fine arts room.

Clayton Community Park
1075 Amelia Church Rd.

42-acre park facilities include playgrounds, picnic shelters, tennis courts, athletic fields, bocce courts, sand volleyball courts, 1/2-mile walking trail, and an amphitheater.

Clayton Municipal Park
325 McCullers Dr.

Ballfield, outdoor basketball court, tennis court, fenced in playground.

Clayton River Walk
2686 Covered Bridge Rd.

This 4-mile trail in Clayton is part of the Mountains-to-Sea Trail and also connects to Clayton's Sam's Branch Greenway Trail.

East Clayton Community Park
1774 Glen Laurel Rd.

66-acre park with picnic pavilion, soccer, baseball and multipurpose field, and a 1-mile partially paved walking trail.

East Clayton Dog Park
2027 Glen Laurel Rd.

The park has two separate enclosures, one for small dogs under 20 pounds and the one-acre large dog area which include rocks, a tunnel and benches. Water, wash station, trash containers, and picnic tables.

Legend Park Mountain Bike Trail
550 City Rd.

From beginner to advanced riders, this eight-mile bike trail offers rock gardens, boulders, jumps, and bridges. Trails are multi-directional.

Sam's Branch Greenway Trail
1358 O'Neil St.

Trail head entrance to the Clayton Greenway, a 1.25 mile section that links up to the Mountains-to-Sea Trail/ Clayton River Walk. Great for hiking, biking, and viewing nature along the Neuse River.

Kenly Parks & Recreation

406 S. College Ave. Kenly 919-284-2116 townofkenly.com/town-government/kenly-parks-recreation

KAPARK Kenly Area Parks & Recreation Center
406 S. College Ave.

KAPARC facility includes ballfields, gymnasium, soccer complex, batting cages, and a half-mile paved walking trail.



Pine Level Parks & Recreation

306 E. Brown St. Pine Level 919-965-2284 pinelevel.org/departments/parks-rec/

Sam Godwin Recreation Park
US Hwy 70-A, Pine Level

Facility includes baseball/softball fields, basketball court, soccer field, community park, and picnic tables.

Town of Princeton

503 Dr. Donnie H. Jones, Jr. Blvd. W. Princeton 919-936-8171 myprincetonnc.com

Princeton Community Park
Park, 116 Holts Pond Rd.

Family friendly park with playground and swings, picnic tables with shelter, and 1 mile lighted walking trail.

Selma Parks & Recreation

305 N. Pollock St. Selma 919-965-9841 selma-nc.com/parks-and-recreation

Brack Wilson Park
1118 W. Oak St.

Park includes a baseball field, playground area, covered picnic shelter, and outdoor basketball courts.

**Richard B. Harrison Gymnasium
& Blackley Athletic Park**
601 W. Noble St.

Facilities include outdoor basketball court, gymnasium, and baseball field.

Smithfield Parks & Recreation

600 Booker Dairy Rd. Smithfield 919-934-2148 smithfield-nc.com/page/parks_home

Buffalo Creek Greenway
600 Booker Dairy Rd.

3-mile greenway travels along the Spring Branch to the Neuse River Walk at Smithfield Commons. Part of the Mountains-to-Sea Trail through Johnston County, the ten foot wide path accommodates hikers, runners and bikers.

**Smithfield Recreation
and Aquatics Center**
600 Booker Dairy Rd.
919-934-1408

Enjoy the 8-lane competition sized swimming pool with adjacent kiddie splash pool, double gymnasium, elevated walking track, racquetball courts, fitness room and banquet room. Day passes for visitors available. sraonline.com

Smithfield Community Park
600 Booker Dairy Rd.

Park offers tennis courts, outdoor basketball courts, baseball/softball, soccer/football/multipurpose fields, picnic shelters, two playground areas, one-mile walking trail, Buffalo Creek Greenway, horseshoe courts, disc golf and double batting cage facility.

Smithfield Town Commons
200 S. Front St.

Take a stroll along the Neuse River Walk in historic Smithfield's Town Commons. Watch nature, go fishing, picnic, or launch your boat. Amphitheater is available to rent.

Indoor & Outdoor Activities

Carolina High Hot Air Balloon Company

Enjoy the picturesque countryside in the hot air balloon "Spellbound Spirit II."

I-95/I-40 Interchange, Benson **919-894-5893**

flycarolinahigh.com

Go Play Outside Now, LLC

Laser tag, beach volleyball, playground, campfires, outdoor fun activities for children, groups and team-building exercises.

44 Cornwallis Rd., Garner **919-796-5601**

goplayoutsidenow.com

Lil' Black Creek Farm

This 150-acre farm has trails for horseback riding, hiking, golf driving range, and paintball field.

3444 Plain View Church Rd., Angier **919-306-0167**

thefarmonlilblackcreek.com

McCoy Paintball

Fast action paintball fun on three fields. Equipment and rentals on site. Parties welcome.

1947 Progressive Church Rd., Princeton **919-936-2025**

mccoypaintball.com

Monster Indoor Batting Cages

Indoor batting facility 55ft and 70ft tunnels and two soft toss areas.

320 W. Main St., Clayton **919-585-4990**

monsterbattingcages.com

Pelican's SnoBalls & Batting Cages

Take a few swings in our batting cage followed by a tasty snoball. Fenced playground area for children.

9180 Cleveland Rd., Angier **919-614-0293**

pelicanssnoballs.com



Rainbow Lanes Family Fun Center

45,000 sq.ft. of family-friendly fun with 32 bowling lanes, huge arcade, billiards room, snack bar, and party rooms!

850 NC Hwy 42 W., Clayton **919-553-4386**

rainbowlanesclayton.com

Springhill Outfitters

Archery shooting range with lessons available for beginners to advanced shooters.

773 Seafood House Rd., Selma **919-351-0764**

springhilloutfitters.com

Motor Sports

GALOT Motorsports Park

New state of the art racing facility features temperature controlled racing surface, onsite restaurant, 9,000-seat stands for a variety of racing events, truck shows/pulls and concerts.

555 Dragstrip Rd., Benson **919-894-1662**

galotmotorsportspark.com

Southern National Motorsports Park

This NASCAR sanctioned venue is a quarter-mile oval asphalt track with 17 degree turns featuring Saturday races March to October.

8071 Newsome Mill Rd., Lucama **919-284-1114**

snmpark.com





Transportation Services

Airports

Johnston County Regional Airport

ILS equipped 5,500 ft. runway. JNX on-field services include aircraft refueling, engine, airframe and avionics repair. After hours call 919-796-3688.

3149 Swift Creek Rd., Smithfield **919-934-0992**
jnx-airport.com

Raleigh Durham International Airport

Over 450 flights daily located 35 miles from Smithfield, I-40, Exits 284 & 285. 1000 Trade Dr., RDU Airport **919-840-2123**
rdu.com

Bus Transportation

Greyhound and Trailways

Bus stop only. Tickets available online.

600 S. Bright Leaf Blvd., Smithfield **800-231-2222**
greyhound.com

Car Rental

Enterprise Rent-A-Car

831 N. Bright Leaf Blvd., Smithfield **919-938-2562**
enterprise.com

Travel Agents

A Travel Odyssey

Full service travel agency for corporate, cruise and family leisure travel.

315 S. Third St., Smithfield **919-934-1862**

Small World Travel & Tours, LLC

Family owned and operated cruise and land vacations agency. 101 E. Hill St., Benson **866-894-1537**
gotsaltlife.com

Auto Repair

AAA Carolinas

1-800-222-4357
carolinas.aaa.com

Performance Tire and Auto Center

1140 W. Market St., Smithfield **919-934-2694**
performancetirenc.com

Specialty

Eddie Bee's Executive Coach

Professional chauffeur specializing in Johnston County Airport transportation, corporate and personal transport and door to door service.

eddiebees.com **919-553-1791**

J & L Carriage

Horse and carriage available for weddings, military funerals and special events.

jllcarriage.com **919-936-2586**

JoCo Limo

Specializes in delivering luxury limosine service at affordable prices .

joco-limo.com **919-587-6069**

Starship Charter & Travel

Full service transportation and charter travel service.

starshipcharterandtravel.com **919-279-7837**

Taxi Service

Tele Taxi

1006 S. Pollock St., Selma **919-202-4511**

Yellow & Checker Cab Co.

504 E. Market St., Smithfield **919-934-2552**

Train

Selma Historic Union Station/ NC AMTRAK

500 Railroad St., Selma **1-800-USA-RAIL**

ncbytrain.org/destinations/stations.html?id=selma

RV & Truck Services

Big Boys Truck Auto Plaza

595 Bagley Rd., Kenly **919-284-4046**

natsn.com/tsdirectory/view/29/big-boys-truck-stop

Blue Beacon Truck Washing

923 Johnston Pkwy., Kenly **919-284-6670**

bluebeacon.com/details/Kenly

Cummins Atlantic, Inc.

Services and amenities include complete bumper to bumper repair for recreational vehicles, motorcoaches and trucks.

Open Monday-Friday, 7am-7pm, Sat 8am-12n.

350 Cummins Dr., Kenly **919-284-9111**

cumminsatlantic.com/locations/northcarolina/kenly

Flying J Travel Plaza

Facility offers 145 parking spaces, 9 showers, game room, J scales, LP filling, RV dump with convenience store, laundry and drivers lounge.

1800 Princeton Kenly Rd., Kenly **919-284-4548**

pilotflyingj.com/stores/683

Kenly 95 Petro

Open 7 days a week, 24 hours with diesel fuel, oil changes and minor repairs, 15 showers, laundry facilities, movie theatre, seven restaurants, CAT scale, dump station, ATM machine and travel store with apparel, gifts and truck accessories.

923 Johnston Pkwy., Kenly **919-284-5121**

kenly95.com

Shopping Old & New



Visitors from far and wide have heard Johnston County is home to eastern North Carolina's largest selection of outlet shopping.

While visiting the area, shop for bargains at Carolina Premium Outlets where national name brand retail stores offer 25-65% in savings every day. Also discover all that JR Cigar offers, being the world largest cigar retail store.

But that's not all...shoppers to the area have also discovered DeWayne's, a home & garden store with Pandora, Brighton, Vera Bradley, and a boutique clothing store. Selma Antiques Shops and Malls offers over 14 antique dealers for the serious or casual hunter of antiquities.

We know you will love to shop local and find that unique art or hand-crafted jewelry, food products like Johnston County Ham, or area farms selling wonderful produce for family dinners. We invite you to discover our charming downtowns, heritage farms, food products, and take home a memory of Johnston County!

Antiques, Flea Markets, & Thrift Stores

A Matter of Record

126 S. Raiford St., Selma **919-965-2640**

AntiqueWish

110 W. Anderson St., Selma **919-202-4900**

Benson Flea Market & Antiques

10 J. Lee Rd., Benson **919-207-2222**

Brightleaf Flea Market

2320 S. Bright Leaf Blvd., Smithfield **919-934-4111**
brightleaffleamarket.com

Country Boy Antiques & Bottle Shop

104 E. Anderson St., Selma **919-345-6658**

Four Oaks Auction Gallery

102 S. Main St., Four Oaks **919-963-3482**
4oaksauction.com

G & L Auctions

800-A Braswell Rd., Smithfield **919-631-0803**

Harper's Flea Market Mall

1410 S. Bright Leaf Blvd., Smithfield **919-989-7280**

Keepsake Corner

110 N. Raiford St., Selma **919-975-0407**
keepsake-corner.com

Korner Flea Market

301 S. Wall St., Benson **919-701-1065**

Morgan's On Main

119 E. Main St., Benson **919-701-1240**

Peddlers Thrift Mall

5533 Hwy 42 W., Ste. D80, Garner **919-661-6848**

Pink Flamingo Thrift & Gift

415 E. Second St., Clayton **919-550-0166**

Rebecca's Vintage Mart

103 W. Main St., Benson **910-849-6302**

Reid's Country Sampler

109 N. Raiford St., Selma **919-965-7299**
reidsantiqueselma.blogspot.com

Selma Cotton Mill Antique Flea Market

1105 W. Anderson St., Selma **919-631-7138**

Seven Sisters Thrift Shop

208 E. Main St., Benson **919-894-6060**

Trackside Antiques & Collectibles

107 E. Railroad St., Selma **919-202-4878**

Treasury Antiques

100 S. Raiford St., Selma **919-965-5335**

TWM Antique Mall

112 S. Pollock St., Selma **919-965-6699**
twmsantiquemall.com

Farms, Markets & Produce

Beasley's Berries

Pre-picked and pick your own strawberries April - June.
428 Peele Rd., Clayton **919-553-6928**

Blue Dragonfly Cut Flower Farm

Locally grown fresh cut flowers available from April to October.
6018 Little Creek Church Rd., Clayton **919-389-9057**
bluedragonflyflowers.com

Boyette Vineyards

Pick your own NC grapes.
1620 Loop Rd., Clayton **919-553-0016**
boyettevineyards.com

Calamity Jane's General Store

5368 Wilson's Mills Rd., Clayton **919-209-4443**

Clayton Farm and Community Market

348 E. Main St., Clayton
cfcmnc.org

Crooked Row Produce

Offers fresh produce along with other seasonal needs such as hanging baskets, pumpkins, gourds, mums, Christmas trees, and more.
110 Roxy Dr., Selma **919-369-5674**

J. Roland Wood Farms

A family, hands-on business serving individual customers with a variety of sweet potatoes.
2500 Beasley Rd., Benson **919-894-2318**

Jacar Produce

Produce and organic egg farm.
1718 Powhatan Rd., Clayton **919-901-3323**

L & G Farm Stand

Local produce and nursery center opening seasonally.
10236 Cleveland Rd., Clayton **919-553-3525**

Lee Farms

Specializing in growing, packing and shipping quality hand-brushed sweet potatoes.
2775 Hockaday Rd., Four Oaks **919-963-6071**

Lee's Produce and and Garden Center

Open 7 days from Mid March - December offering fresh local produce, seasonal plants, and Christmas trees, wreaths and bows.
401 W. Main St., Clayton **919-550-8425**
leesgardenctr.com

Melrose's Farm

Cut flower farm selling to local florists, farmers markets, and direct from farm: sunflowers, tuberose, glads, zinnias, hydrangea.
3299 Brogden Rd., Smithfield **919-632-0212**
localharvest.org/melroses-farm-M40643

Mountain Branch Farm

Specializing in Red Cedar, Virginia Pine and White Pine. Christmas Trees Thanksgiving Day through Christmas Eve 8am till dark.
1660 Cornwallis Rd., Garner **919-553-2672**

Northlake Christmas Trees & Nursery

Open Thanksgiving-Christmas with trees including: Pines, Spruces, Firs, and Cypresses. Customized wreath orders and ball/burlapped live trees available upon request.
7326 Meadowbrook Rd., Benson **919-894-3524**
northlakechristmastreenursery.com

Smith's Nursery and Strawberry Farm

Open year-round with pick-your-own seasons. Strawberries: April-June, blueberries: June-July, pumpkins & mums: September-October.
443 Sanders Rd., Benson **919-934-1700**
smithsnurseryinc.com

Thompson Orchard

Visit us each summer for homegrown peaches, produce, veggies, and many other goodies!!
4301 US Hwy 701 S., Four Oaks **919-934-8434**
thompsonorchards.com

Toad Song Farm

Herb plants, bedding plants, lavender crafts, nature walks, lavender labyrinth, workshops and much more.
14765-D Buffalo Rd., Clayton **919-553-2992**
toadsongfarm.com

Locally Produced Products

Arrowhead Farm Dairy

Old fashioned, cold process lye soap containing fresh or fresh frozen goat milk.
Online Shopping **919-965-9306**
arrowheadfarmdairygoats.com

Atkinson's Old Grist Mill

Products include: hush puppy mix, biscuit mix, funnel cake mix, seafood bread, and chicken breading.
95 Atkinson Mill Rd., Selma **800-948-5707**
atkinsonmilling.com

Carolina Packers, Inc.

Home of the Brightleaf Hotdog, a Johnston County tradition since 1941!
2999 S. Bright Leaf Blvd., Smithfield **919-934-2181**
carolinapackers.com



CAROLINA PREMIUM OUTLETS*

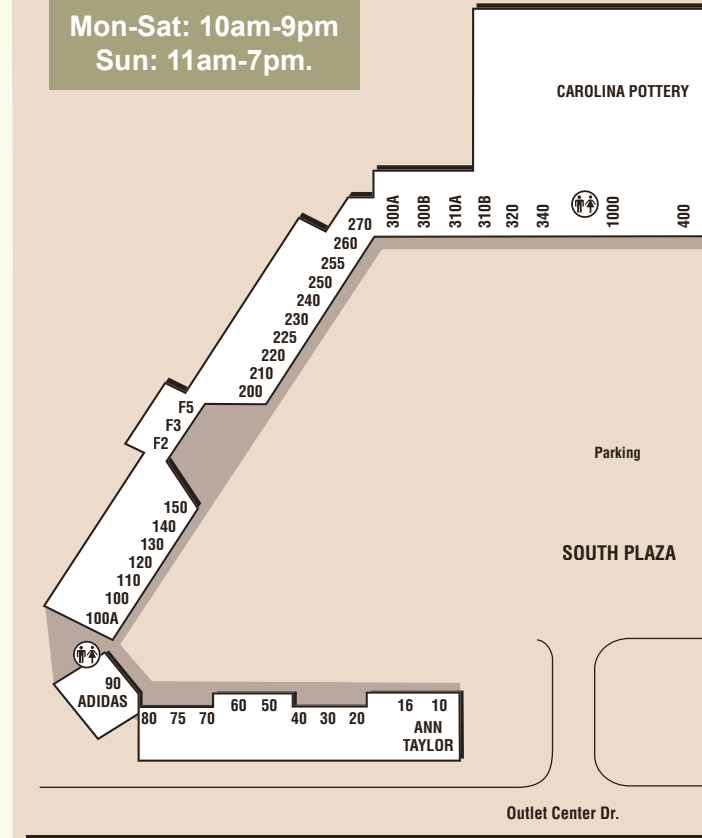
A SIMON CENTER

Carolina Premium Outlets, located off I-95, Exit 95 is the largest outlet center in Eastern North Carolina and is only 30 minutes east of Raleigh. The outlet center features national brands like Coach, Brooks Brothers, Ann Taylor, Banana Republic, The Gap, Polo Ralph Lauren, Tommy Hilfiger, Calvin Klein and many others with savings of 25% to 65% every day.

Carolina Premium Outlets has a VIP Shopper Club with exclusive deals and groups of fifteen or more will receive a special coupon package. Area hotels offer a Girlfriend's Getaway Package which includes coupon books, spa discounts, hotel deals, and BOGO admission at the Ava Gardner Museum — along with free goodies.

Special events and activities to bring you back time and again include holiday sidewalk sales, the Deer Widow, the Fall Music Series and the biggest of all – Midnight Madness on Thanksgiving night to kick off the Christmas season deals!

The outlet center is open
Mon-Sat: 10am-9pm
Sun: 11am-7pm.



- Suite 90 **Adidas**
919-209-9763
- Suite 550 **Aeropostale**
919-989-0154
- Suite 1247 **Aerosoles**
919-209-0126
- Suite 810 **American Eagle Outfitters**
919-938-3013
- Suite 10 **Ann Taylor Factory Store**
919-989-7270
- Suite F2 **Auntie Anne's Soft Pretzels**
919-209-0096
- Suite 610 **Banana Republic Factory Store**
919-938-1558
- Suite 50 **Bass Factory Outlet**
919-934-7158
- Suite 300A **Bath & Body Works**
919-934-1946
- Suite 1237 **Beef Jerky Outlet**
Coming Soon
- Suite 340 **Bon Worth**
919-934-7759

- Suite 1213 **Bose**
919-989-6830
- Suite 1225 **Brooks Brothers Factory Store**
919-989-6328
- Suite 1000 **Carolina Pottery**
919-934-1157
- Suite 310A **Carter's**
919-989-7778
- Suite 450 **Casual Male XL**
919-989-7751
- Suite 400 **Champion**
919-989-0199
- Suite 20 **Chico's**
919-209-0408
- Suite 16 **The Children's Place Outlet**
919-938-0078
- Suite 1223B **Christopher & Banks**
919-938-3003
- Suite 510 **Claire's**
919-989-6966
- Suite 1215 **Clarks Bostonian**
919-934-0615

- Suite 1250 **Coach**
919-934-9089
- Suite 225 **Cricket Wireless**
919-934-2202
- Suite 30 **Crocs**
919-934-0073
- Suite 910 **Dairy Queen Grill & Chill**
919-934-0066
- Suite 250 **Destination Maternity Outlet**
919-989-8886
- Suite 100 **Direct Tools Factory Outlet**
919-934-7780
- Suite 520 **Dressbarn**
919-934-0334
- Suite 110 **Dressbarn Woman**
919-989-8181
- Suite 210 **Easy Spirit Outlet**
919-934-3756
- Suite 1239 **Eddie Bauer Outlet**
919-989-8570
- Suite 1259 **Fossil**
919-938-6134

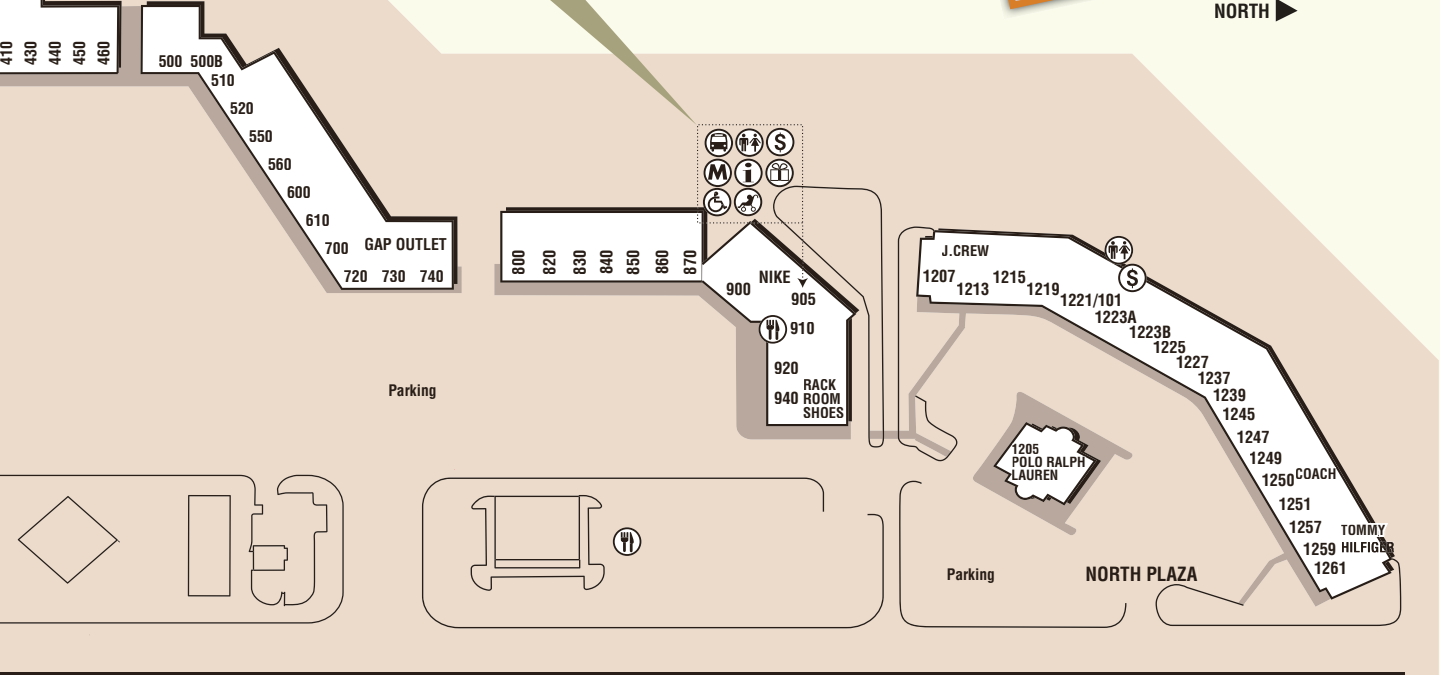
- Suite 720 **Gap Factory Store**
919-989-7158
- Suite 310B **Gymboree Outlet**
919-934-2373
- Suite 80 **Haggar Clothing Co.**
919-989-6244
- Suite 230 **Hanes Bali Playtex**
919-934-0548
- Suite 440 **Hot Topic**
919-209-0032
- Suite 1207 **J. Crew**
919-209-0035
- Suite 320 **Jockey**
919-989-7676
- Suite 260 **Journeys**
919-934-5040
- Suite 410 **Justice**
919-209-0840
- Suite 430 **Kay Jewelers Outlet**
919-938-2444
- Suite 150 **Kitchen Collection**
919-938-0726

**Carolina Premium Outlet
Office/Visitor Center**

1025 Outlet Center Dr.
919-989-8757
premiumoutlets.com/carolina



NORTH ►



- Suite 500B Lane Bryant Outlet
919-300-4249
- Suite 500 Levi's Outlet Store
919-934-7203
- Suite 850 Loft Outlet
919-209-0230
- Suite 730 Merrell
919-934-7305
- Suite 460 Naturalizer
919-934-6170
- Suite 140 Nautica
919-934-5070
- Suite F3 Nestle Toll House Café
Coming Soon
- Suite 700 New York & Company Outlets
919-209-0478
- Suite 900 Nike Factory Store
919-989-6100
- Suite 830 Nine West Outlet
919-209-0762
- Suite 1245 OshKosh B'gosh
919-938-1199

- Suite 255 PacSun
919-934-6660
- Suite 300B Perfumania
919-934-5619
- Suite 1251 Polo Ralph Lauren
Children's Factory Store
919-934-6999
- Suite 1205 Polo Ralph Lauren Factory Store
919-938-6140
- Suite 60 Popcorn Haven
919-989-8033
- Suite 940 Rack Room Shoes
919-934-4222
- Suite 1227 Reebok
919-989-7736
- Suite 130 Rue21
919-209-0767
- Suite 1257 Samsonite
919-989-9506
- Suite 740 Skechers
919-989-2133
- Suite 600 Southern Attitude
919-763-2988

- Suite 240 Stride Rite
Keds Sperry
919-934-4810
- Suite 1223A Sunglass Hut
919-989-8080
- Suite 560 Talbots
919-209-0190
- Suite 920 Timberland
919-934-4300
- Suite 1261 Tommy Hilfinger
919-989-1940
- Suite 270 Toys "R" Us Express
919-938-0030
- Suite 870 Under Armour
919-209-0466
- Suite 75 Uniform Destination
919-989-4084
- Suite 220 Van Heusen
919-934-6354
- Suite F5 Vitamin World
919-989-8995
- Suite 840 Wilsons Leather
919-989-9599

- Suite 100A Yankee Candle
919-938-1188
- Suite 1221B Zales Outlet
919-209-0000



House-Autry Mills

Cornmeal products including seafood breader, chicken breader, hush puppies and biscuit mix.

7000 US Hwy 301 S., Four Oaks **800-849-0802**
house-autry.com

McLamb's Abattoir

Purchase fresh ground sausage, pork and beef products.

623 Benson-Hardee Rd., Benson **919-894-2587**

Miss Debbie's Specialty Apples

Specialty gourmet caramel apples for any occasion.

Online Shopping **919-464-1502**
specialtyapples.com

Mule City Specialty Feeds

Custom livestock feed manufacturing as well as over 100 kinds of feed to keep pets and stock animals healthy and strong.

1202 N. Wall St., Benson **919-894-3626**
mulecity.com

Popcorn Haven

Corn is grown and popped fresh in Johnston County. Stop in to try one of over 250 flavors.

1025 Outlet Center Dr., Ste. 60, Smithfield **919-989-8033**
popcornhaven.com

Shamrock's Buzzy Bee

Locally produced honey and bee products

115 W. South Railroad St., Four Oaks **919-247-6852**
shamrocksbuzzybee.com

Smithfield Ham Shop/ Johnston County Hams

Country hams, bacon, spiral sliced hams and more.

204 N. Bright Leaf Blvd., Smithfield **919-934-8054**
countrycuredhams.com

Stevens Sausage Company

Country hams, spiral sliced hams, hotdogs and sausage are available for retail and mail order.

3411 Stevens Sausage Rd., Smithfield **800-338-0561**
stevens-sausage.com

Outlets

Carolina Apparel & Sport

Home to Carhartt, Browning, Guy Harvey, Ducks Unlimited, Salt Life and big-man apparel, sizes up to 52.

49 JR Rd., Selma **919-202-0777**
carolinaapparel.com

Carolina Premium Outlets

Visitor information located in suite 905

1025 Outlet Center Dr., Ste. 905, Smithfield **919-989-8757**
premiumoutlets.com/carolina



Heavner Furniture Market

Wide selection of one-of-a-kind home and office furniture.

1701 W. Market St., Smithfield **919-934-0551**
nc-furniture-market.com

JR Cigar

World's largest cigar store!

67 JR Rd., Selma **919-965-5055**
jrselma.com

Red River Western Wear

Western wear and work boots, hard to find sizes and odd items.

49-C JR Rd., Selma **919-965-3337**
redriverwesternwear.com

Soffe - Factory Outlet Store

Find an endless assortment of stylish, high-quality active-wear and collegiate apparel in sizes from kids to adults.

49-F JR Rd., Selma **919-965-0062**
soffe.com/outlets

Specialty Shops

All Out Bikes

Bikes. New and used, full service.

106 S. Main St., Four Oaks **919-628-1089**
alloutbikesshop.com

Casey's Floral & Catering Service

Floral and catering services for all occasions.

201 S. Center St., Princeton **919-936-8801**
caseysfloristprinceton.com

DeWayne's

Garden center, gift shop, jewelry & clothing boutiques.

1575 Outlet Center Dr., Selma **919-202-8471**

Pine Level Hardware & Furniture

Family owned hardware and furniture store offering name brand furniture and accessories."

219 N. Peedin Ave., Pine Level **919-965-8961**
pinelevelfurniture.com

Southern Roots Boutique

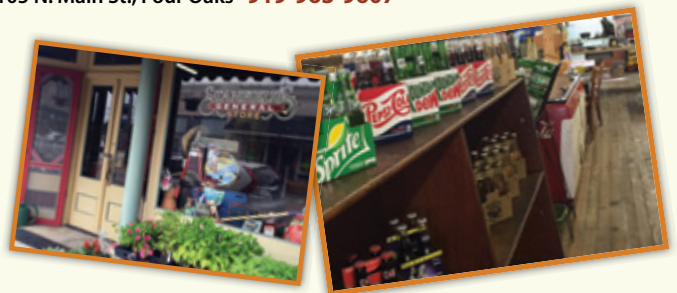
Contemporary clothing and accessories for women of all ages.

206 N. Main St. Four Oaks **919-963-6300**
southernrootsboutiquenc.com

Stanfield's General Store

Traditional general store that has household necessities along with antiques, gift items, and classic candies.

105 N. Main St., Four Oaks **919-963-9607**



Dining

Dining out can be fast if you need it to be, home-cooking Southern style, or national chains offering steaks, seafood, and American cuisine giving even your “picky” eater something to choose from.

For true Eastern style bar-be-cue, visitors to the area will find several well known BBQ restaurants are serving up chopped pork with a vinegar based sauce. Folks around here have their favorites, but we will let you decide...we suggest you try White Swan, Holt Lake, Smithfield Chicken N’ BBQ, Stephenson’s, McCall’s or Stormin’ Norman’s for your taste test. For a sweeter style BBQ sauce, Charlie’s BBQ & Grille is a very good choice too!

If you are interested in learning how to cook some of our favorite recipes, visit johnstoncountync.org/southern-style-recipes

BBQ & Southern

Biscuitville

771 Enterprise Dr., Clayton
919-550-7444
biscuitville.com

Bojangles

11900 US Hwy 70 W., Clayton
919-550-4175
12355 NC Hwy 210, Benson
919-209-0322
5497 NC Hwy 42 W., Garner
919-773-9116
502 N. Pearl St., Princeton
919-936-0385
275 US Hwy 70 E., Selma
919-965-6890
bojanglesrdu.com

Charlie’s BBQ & Grille

8948 Cleveland Rd., Ste. 104, Clayton
919-934-0093
charliesbbqandgrille.org

Cracker Barrel

5199 NC Hwy 42 W., Garner
919-661-4044
1109 Outlet Center Dr., Smithfield
919-989-2140
crackerbarrel.com

Four Oaks Restaurant & Grill

203 W. Wellons St., Four Oaks
919-963-2289

Golden Corral Buffet & Grill

100 Towne Centre Place, Smithfield
919-989-1125
goldencorral.com

Holt Lake BBQ & Seafood

3506 US Hwy 301 S., Smithfield
919-934-0148

Hula Girl Cafe & Catering

103 S. Raiford St., Selma
919-631-5862

Lowell Mill Restaurant

595 Bagley Rd., Kenly
919-284-5141
lowellmillrestaurant.com

McCall’s Bar-B-Que & Seafood

10365 US Hwy 70 Bus., Clayton
919-550-3877
mccallsbbq.com

Meadow Village Restaurant

7400 NC Hwy 50 S., Benson
919-894-5430
meadowrestaurant.biz

Parkside Café

2176-A US Hwy 70-A, Pine Level
919-965-4100

Robbins Nest

121 US Hwy 70-A, Selma
919-965-5522
robbsnestrestaurant.com

Rockin’ Comet Diner

11637 US Hwy 70 W., Clayton
919-550-6060

Smithfield’s Chicken’N Bar-B-Q

924 N. Bright Leaf Blvd., Smithfield
919-934-8721
10414 US Hwy 70 W., Clayton
919-553-4553
5180 NC Hwy 42 W., Garner
919-773-0774
scnbc.com

Stephenson's Bar-B-Q

11964 NC Hwy 50 N., Willow Springs
919-894-4530

Stormin' Norman's Barbecue

404 S. Church St., Kenly
919-284-0061
storminnormansbbq.com

The Chicken Barn

703-B E. Market St., Smithfield
919-934-6866
thechickenbarn.net

The Diner

314 E. Market St., Smithfield
919-934-6644

White Swan Bar-B-Q

105 N. Honeycutt St., Benson
919-894-4446
11960 NC Hwy 210, McGee's Xds
919-989-9299

3103 US Hwy 70 E., Princeton
919-202-5932

3198 US Hwy 301 S., Smithfield
919-934-8913

3655 Wilson's Mills Rd., Wilson's Mills
919-989-6500

whiteswanbarbeque.com

Coffee Shops

Grapes & Grounds

135 S. Third St., Smithfield
919-934-3688

grapesandgrounds1.com

Starbucks Coffee Co.

13024 US Hwy 70 W. #103, Clayton
919-359-0690

1105 S. Equity Dr., Smithfield
919-621-4996

starbucks.com

Delis/Bakeries

Big Steve's Bagels and Deli

12330 NC Hwy 210, Benson
919-989-8006

bigstevesbagels.com

Clayton Bakery & Café

8970 US Hwy 70 E., Clayton
919-550-5300

claytonbakery.com

Dunkin' Donuts/ Baskin Robbins

770 Enterprise Dr., Clayton
919-359-8464

1006 N. Bright Leaf Blvd., Smithfield
919-323-3303

446 US Hwy 70 E., Selma
919-965-2354
dunkindonuts.com

Gotham's Deli

224 E. Market St., Smithfield
919-934-9100
gothamsdeli.com

Jenny's Sweet Creations

221 E. Main St., Benson
919-207-0381

JP's Pastry

111 S. Railroad St., Benson
919-894-5000
jpspastry.com

Sherry's Signature Cheesecakes

120 E. Main St., Clayton
919-270-0513
signaturecheesecakes.com

Ice Cream

Cold Stone Creamery

150 S. Equity Dr., Ste. A, Smithfield
919-938-1300
coldstonecreamery.com

Country Folks Creamery

4648 NC Hwy 42 E., Clayton
919-915-0701

618 E. Market St., Smithfield
919-634-0429

Creech Drug Company

126 N. Raiford St., Selma
919-965-2316

Dairy Queen

11697 US Hwy 70 W., Clayton
919-553-2529

5596 NC Hwy 42 W., Garner
919-662-9292

1025 Outlet Center Dr., Ste. 910
Smithfield

919-934-0066
dairyqueen.com

Froyo 101

11801 US 70 Bus. Hwy W., Clayton
919-550-2188

Hills of Snow Snowballs

110 S. Bright Leaf Blvd., Smithfield
919-795-7461

Mimmzi's Ice Cream and More

431 Athletic Club Blvd., Clayton
919-550-7483
mimmziscecreamandmore.com

Pelican's SnoBalls

9180 Cleveland Rd., Clayton
919-614-0293
pelicanssnoballs.com

Sweet Frog Ice Cream

1261 N. Bright Leaf Blvd., Smithfield
919-938-3764
sweetfrog.com

Warren Drug Company/ Soda Fountain

209 E. Main St., Benson
919-894-4651

Local Red Hot Dogs

Char-Grill

105 S. Walton Dr., Benson
919-894-4499

11581 US Hwy 70 W, Clayton
919-553-2427

chargrillusa.com

Corner Kitch'N

11453 US Hwy. 70 W., Clayton
919-243-0147

cornerkitchn.com

Cricket's Hot Dogs

506 E. Market St., Smithfield
919-934-0938

Darlene's Cone Cave

108 N. Main St., Four Oaks
919-963-6008

Glenda's Sweet Shop and Grille

300 S. Wall St., Benson
919-894-1391
glendasgrille.com

Jones Cafe

415 E. Main St., Clayton
919-553-7528

Millie's Hot Dogs

109 S. Bright Leaf Blvd., Smithfield
919-989-7863

Ole Time Grill

101 W. Wellons St., Four Oaks
919-963-2611

The Grocery Bag

4879 NC Hwy 42 E., Clayton
919-553-4088

Zack's Char-Grill

618-B E. Market St., Smithfield
919-989-9227

Other

Chick-fil-A

1300 N. Bright Leaf Blvd., Smithfield
919-938-0058

chick-fil-a.com

Chipotle Mexican Grill

120 S. Equity Dr., Smithfield
919-934-1002

chipotle.com

Kenly 95 Petro

923 Johnston Pkwy., Kenly

Caribou Coffee
919-502-7015

Dairy Queen
919-502-7044

Iron Skillet
919-502-7008

Pizza Hut/Taco Bell
919-502-7054

Subway
919-502-7026

Wendy's
919-502-7069

kenly95.com

McDonald's

27 Crape Myrtle Dr., Benson
919-934-3027

600 E. Main St, Benson
919-894-8503

11351 US Hwy. 70 W., Clayton
919-553-5480

6163 US Hwy. 301, Four Oaks
919-963-2739

50 Glen Rd, Garner
919-662-7934

400 S. Church St., Kenly
919-284-1015

355 Us Hwy 70 W., Selma
919-965-8379

884 W. Market St., Smithfield
919-934-9306

1209 N. Brightleaf Blvd., Smithfield
919-934-3588

mcdonalds.com

Two Cousins Pizza & Pasta

12330 NC Hwy 210, Ste. 109, Benson
919-934-2322

twocousins.us/crossroads

Pizza Xpress

201 S. Pollock St., Selma
919-975-0075

pizzaxpressselma.com

ABC Permits

Anthony's Italian Pizza & Pasta

12989 US 70 Bus. Hwy., Clayton
919-550-3205

anthonysclaytonnc.com

Applebee's

1260 N. Bright Leaf Blvd., Smithfield
919-989-8885

5158 NC Hwy 42 W., Garner
919-662-7281

applebees.com

Becky's Log Cabin

2491 US Hwy 70 Bus. E., Smithfield
919-934-3323

beckyslogcabin.com

Bella Bistro & Circa 1908

709 S. 3rd St., Smithfield
919-727-7666

bellabaristaandbistro.com

Bonsai Restaurant

11629 US Hwy 70, Clayton
919-550-6030

Buffalo Wild Wings

130 S. Equity Dr. Smithfield
919-938-1250

buffalowildwings.com

Clayton Steakhouse

307 E. Main St., Clayton
919-553-2299

claytonsteakhouse.com

Cleveland Draft House

6101 NC Hwy 42 W., Garner
919-771-2337

461 Shotwell Rd., Clayton
919-771-3723

clevelanddrafthouse.com

Clubhouse at Cleveland Square

51-A Technology Dr., Garner
919-662-2207

clubhouse4042.com

Don Beto's Tacos

10376 US 70 Bus Hwy W., Clayton
919-359-0095

720 Ricks Rd., Selma
919-202-4566

donbetostacos.com

El Barzon Mexican Restaurant & Bar

1691 S. Bright Leaf Blvd., Smithfield
919-205-1661

elbarzonrestaurantandbar1.com

El Charro Mexican Restaurant

709 S. Wall St., Benson
919-207-2806

elcharromexican.net

Festejos-Mexican Bar and Grill

905 E. Main St., Clayton
919-359-2755

festejosbarandgrill.com

Fiesta Mexicana

957 Town Center Blvd., Clayton
919-550-8888

5131 NC Hwy 42 W., Ste. 270, Garner
919-772-5498

fiestamexicananc.com

The FlipSide

408 E. Second St., Clayton
919-553-0123

theflipsideclaytonnc.com

Heidi's Two-Wheel Café

1475 W. Market St., Smithfield
919-989-8389

Kobe Japanese Steakhouse

101 Venture Dr., Smithfield
919-938-3200

820 Gulley Dr., Clayton
919-359-9060

kobenc.com

La Cocina Mexican Restaurant

11617 US Hwy 70 W., Clayton
919-550-7323

1285 N. Bright Leaf Blvd., Smithfield
919-938-7002

lacocinanc.com

La Piazza

7727 NC Hwy 42 W., Raleigh
919-662-5007

twocousinspizza.us/lapiazza

Lane's Seafood & Steak House

275 Bowling Spring Dr., Angier
919-894-7700

gregoryvineyards.com

Lone Star Steakhouse Restaurant

13049 US Hwy 70 W., Clayton
919-359-6201

lonestarsteakhouse.com

Lucky Chicken Peruvian Cuisine

312 E. Main St., Clayton
919-553-5770

luckychickennc.net

Mannings Restaurant

406 E Main St., Clayton
919-585-7005

manningsonmain.com

McKinley's Restaurant and Pub

11751 US Hwy 70 W., Clayton
919-553-5534

mckpubctown.com

Mucho Mexico

712 E. Market St., Smithfield
919-989-6889

muchomexicoinc.com

Outback Steakhouse

911 Outlet Center Dr., Smithfield
919-989-3056

outback.com

Ruby Tuesday

65 Son Lan Pkwy., Garner
919-772-3838

160 Smithfield Crossing Dr., Smithfield
919-938-3640

rubytuesday.com

San Marcos Mexican Restaurant

275 N. Equity Dr., Smithfield
919-934-2424

sanmarcosrestaurant.com

Simple Twist

5638 NC Hwy 42 W., Garner
919-661-5566

227 E. Market St., Smithfield
919-938-0377

simpletwistnc.com

Skylines Café

8878 US Hwy 70 Bus. W., Clayton
919-550-7619

skylinescafe.com

SoDoSoPa

146 S. Third St., Smithfield
919-205-1076

Texas Steakhouse & Saloon

235 Outlet Center Dr., Smithfield
919-938-3221

texassteakhouse.com

Twisted Owl Sports Bar & Grill

150 S. Equity Dr., Smithfield
919-205-1483

Venero's Pizzeria

9973 US Hwy 70 W., Clayton
919-553-0761

venerospizzeria.com





***Your wedding or special event in Johnston County
can be rustic, elegant, outside, or all three at once!***

Getting married in rural destinations on farms, wineries, and horse venues is very popular with today's brides. Johnston County has all these and more for your wedding, social event, or family reunion, including Bed & Breakfast Inns, historic homes and several area farms. The Farm is available for rustic weddings, reunions or other social events, and most all venues are located just 30 minutes east of Raleigh.

The Visitors Bureau staff offers a wide variety of complimentary services to help you find the venue that suits your special event, just call 1-800-441-7829 for assistance!

- Suggestions for ceremony and reception sites.
- Provides room block assistance with overnight accommodations.
- Provides visitor information for your out-of-town guests.
- Free gift bags for event attendees.



Benson

Benson Civic Center

1204 N. Johnson St., Benson
919-894-5117

townofbenenson.com/2172/facilities-loations

Benson Conference Center

303 E. Church St., Benson
919-894-3553

townofbenenson.com/2172/facilities-loations

Benson Singing Grove

406 E. Main St., Benson
919-894-5117

townofbenenson.com/2172/facilities-loations

Enoch Vineyards

3735 NC Hwy. 50 S., Benson
919-427-5740

Gregory Vineyards.

275 Bowling Springs Dr., Angier
919-894-7700

gregoryvineyards.com

**Preston Woodall House
Bed & Breakfast**

201 E. Hill St., Benson
919-894-7025

woodallhouse.com

W. J. Barefoot Auditorium

303 E. Church St., Benson
919-894-3553

townofbenenson.com/2172/facilities-loations

Clayton

Brick & Mortar Events and Catering

217 E. Main St., Clayton
919-616-8995

brickandmortarevents.com

Monti Hall

9963 US Hwy 70 W., Clayton
919-553-0761

venerospizzeria.com/monti-hall-catering

Portofino

25 Paraggi Ct., Clayton
919-270-0089

portofinonc.com/the-amenities/schedule-an-event/

The Clayton Center

111 E. Second St., Clayton
919-553-3152

theclaytoncenter.com

The Wagner House

121 E. Main St., Clayton
919-550-0065

wagnerhouseclayton.com

The Woman's Club of Clayton

109 Church St., Clayton
919-413-2533

twccnc.org

Four Oaks

Howell Woods Environmental Learning Center

6601 Devil's Racetrack Rd., Four Oaks
919-938-0115

johnstoncc.edu/howellwoods

Garner

The Hall and Gardens at Landmark

12450 Cleveland Rd., Garner
919-329-7674

thehallatlandmark.com

Pine Level

Hinnant Vineyards

826 Pine Level-Micro Rd., Pine Level
919-965-3350

hinnantvineyards.com

Princeton

Gurley House and Titia's Garden

207 W. 3rd St. Princeton
919-936-4141

gurleyhouse.com

Selma

Camp Mary Atkinson

8591 NC 42 E., Selma
919-782-3021

nccoastalpines.org/en/camp/explore-the-camps/mary-atkinson.html

The Farm

215 Batten Rd., Selma
919-750-5464

thefarmnc.com



Smithfield

Atkinson-Smith House

8514 Brogden Rd., Smithfield
919-934-5115

southerncharmwedding.com

Country Club of Johnston County

694 Country Club Rd., Smithfield
919-934-4166

ccjohnstoncounty.com

Double Barley Brewing

3174 Hwy. 70 W., Smithfield
919-934-3433

doublebarleybrewing.com

The Dupree House

709 S. Third St., Smithfield
919-934-8805

thedupreehouse.com

Johnston County Agricultural Center

2736 NC Hwy 210, Smithfield
919-989-5380

johnston.ces.ncsu.edu/site-johnston-ag-center-auditorium

Johnston Medical Mall

514 N. Bright Leaf Blvd., Smithfield
919-938-7736
johnstonhealth.org/visitor/Rental.html

Lazy O Farm

3583 Packing Plant Rd., Smithfield
919-934-1132

Paul A. Johnston Auditorium

245 College Rd., Smithfield
919-209-2112

johnstoncc.edu/performingarts/facilities-rental

Smithfield Recreation and Aquatics Center

600 Booker Dairy Rd., Smithfield
919-934-1408

sraonline.com



Annual Events

When planning your visit to the county you might want to consider timing it with one of the many annual events and festivals held throughout the year.

Mid March recalls a more somber period in our history, with the anniversary of the Battle of Bentonville, remembered each year with educational, living history programs. Spring in Johnston County is harvest time and events like the Cleveland Strawberry Festival and Smith's Farm Mother's Day Festival coincide with strawberry pickin' season.

Our rural heritage continues to be celebrated with several festivals in the county like the Smithfield Ham & Yam Festival, Clayton Harvest & Music Festival and the largest festival in the county, Benson Mule Days. Throughout the year, area farms, vineyards and heritage sites play tribute to our farming heritage...so we invite you to explore where our country's food is produced in an educational and fun environment. Pick pumpkins in the fall and tour our farms on hayrides enjoying holiday lights in December...so much fun for the entire family.

February

Black History Month - Gospel Fest

In celebration of Black History Month, this entertaining annual event offers performances by community groups including choirs, dance troupes, mimes and solo performers. Free.

Paul A. Johnston Auditorium and Lobby, 245 College Dr., Smithfield
919-209-2539 jccperformingarts.com

March

Bentonville Battlefield's Anniversary Event

The Anniversary of the Battle of Bentonville features artillery and infantry demonstrations. Call for program details. Free.

Bentonville Battlefield State Historic Site, Four Oaks
910-594-0789 nchistoricsites.org/bentonvi/

Johnston County Art and Food Festival

Attendees will be treated to delicious sample dishes from some of Johnston County's finest restaurants along with a juried art exhibit.

Johnston Community College, 245 College Rd., Smithfield
919-938-0306 jcartscouncil.org

GALOT's PDRA

Join the racing excitement at this year's Professional Drag Racing Association event at the new GALOT Motorsports Park.

555 Dragstrip Rd., Benson
919-894-1662 galotmotorsportspark.com

April

Beach Fest at The Farm

Come enjoy this show featuring some of the best beach music bands in the business.

215 Batten Rd., Selma
919-750-5464 thefarmnc.com

Classic Antique Power Heritage Festival

Large display of antique tractors, equipment and engines, tractor games, parades and field demonstrations.

355 J Lee Rd., Benson
919-894-3825 benson-chamber.com

Howell Woodstock

Celebrate environmental education, live music, hayrides, and recreational activities, as well as local vendors. This event ends with a campfire, s'mores, and astrology activities.

6601 Devil's Racetrack Rd., Four Oaks
919-938-0115 johnstoncc.edu/howellwoods

Lazy O Farm Easter Egg Dayz

Explore the barnyard, hatch out of hula hoop, hop on a hayride, enjoy a unique egg hunt, farm animals and picnic area. By appointment.

3583 Packing Plant Rd., Smithfield
919-934-1132

NC Beer Month

This annual month-long celebration of NC Craft Beer production offers visitors a host of tastings, tap takeovers, beer dinners and more.

Deep River Brewing

919-585-2296 deepriverbrewing.com

Double Barley Brewing

919-934-3433 doublebarleybrewing.com

Strawberry Festival

All day celebration for the community focused on family fun and entertainment including classic car show, face painting and activities for kids, lots of food and of course, strawberries!

Technology Dr., Hwy 40 & 42

919-773-8448 greaterclevelandchamber.com

May

East Coast Truckers Jamboree

Three day truck and car show with live music and games.

923 Johnston Pkwy, Kenly

919-502-707 kenly95.com

Flower Hill Rhodo Ramble

A traditional early May nature walk at this Johnston County jewel for the magnificent blooms of Catawba rhododendron and other wildflowers.

NC Hwy 231 N. & Flower Hill Rd., Middlesex

919-833-3662 x102 triangleland.org

Lazy O Farm Summer Dayz

Learn how seeds and cows provide lots of your favorite foods. Make ice cream, butter, and get seeds to take home for planting. Also enjoy hayrides, farm animals and picnic area. By appointment.

3583 Packing Plant Rd., Smithfield

919-934-1132

Smithfield Ham & Yam Festival

The Annual Ham & Yam Festival is teaming with ham biscuits, barbecue pork, and sweet potatoes. There will be arts, crafts, kid's activities, live entertainment, pig cooking contest, "What's That Yam Thing?", and piglet races.

Throughout Downtown Smithfield

919-934-0887 hamandyam.com

Smith's Farm Mother's Day Festival

Enjoy strawberry picking, fresh produce, flowering plants, fishing, and farm animals..

Smith's Nursery 443 Sanders Rd., Benson

919-934-1700 smithsnurseryinc.com

June

Summer Living History Series

Discover how Civil War soldiers lived in camp and what role the enlisted man played in battle. Call for program details.

Bentonville Battlefield State Historic Site, Four Oaks

910-594-0789 nchistoricsites.org

301 Endless Yard Sale

Johnston County and its towns along US 301 announce the "Endless Yard Sale" to take place the third weekend of June. The communities will join together with deals, antiques, collectibles and more along a 100-mile stretch of highway between Roanoke Rapids and Dunn, NC.

US Hwy 301 Kenly to Benson 919-989-8687

301endlessyardsale.com

Lazy O Farm Summer Dayz

Learn how seeds and cows provide lots of your favorite foods. Make ice cream and butter and get seeds to take home for planting. Also enjoy hayrides, farm animals and picnic area. By appointment.

3583 Packing Plant Rd., Smithfield

919-934-1132

Mondo Roots Cultural Arts & Music Festival

Festival-goers will enjoy a day filled with entertainment featuring national touring musical acts, fine arts vendors and handmade crafts.

Downtown Clayton

585-729-6663 mondoroots.com

State Annual Singing Convention

The oldest Southern gospel convention in the nation includes three days of gospel music competition including amateur duets, trios, quartets, choirs, and family groups.

Benson Singing Grove, Benson

919-894-4389 gospelsingingconvention.org

July

Lazy O Farm Summer Dayz

Learn how seeds and cows provide lots of your favorite foods. Make ice cream and butter and get seeds to take home for planting. Also enjoy hayrides, farm animals and picnic area. By appointment.

3583 Packing Plant Rd., Smithfield

919-934-1132

September

Benson Mule Days

A Southern tradition for over 60 years, this four day family-fun festival is packed with mule competition events, rodeos, carnival rides, arts and crafts, street dances and concerts.

Downtown Benson and Chamber Park

919-894-3825 bensonmuledays.com

Camp Flintlock Colonial Faire

Learn to write with quill and ink, throw a tomahawk, listen to period music, view black powder firearms demonstrations, sample early American cuisine, shop in a Colonial store, and much more!

1580 King Mill Road, Four Oaks

919-938-1776 campflintlock.com

Clayton Harvest and Music Festival

Come and enjoy five days of exciting events! Concerts, Clayton Idol Competition, Karaoke Contest, Dance Party and more. Food for all taste buds, 200 craft vendors and Classic Car Show.

Downtown Clayton

919-553-6352 claytonchamber.com

GALOT's Monster Truck Throwdown

Join thousands of Monster Truck fans for this exciting event at the new GALOT Motorsports Park just south of Benson.

555 Dragstrip Rd., Benson

919-894-1662 galotmotorsportspark.com

Farm Fest

Annual country music concert featuring today's top acts presented by Springhill Outfitters.

215 Batten Rd., Selma
919-750-5464 thefarmnc.com

Four Oaks Acorn Festival

The festival begins with a parade and continues with a variety of food, arts and crafts, jewelry and clothing, information vendors, and a host of children's activities.

Baker St., Four Oaks
919-963-4004 fouroakschamber.com

St. Ann's Annual International Food Festival

Come be a part of this wonderful festival with foods representing nineteen countries from around the world, music and games for children.

St. Ann Catholic Church, 4057 US 70 Hwy Business W, Clayton
919-934-2084 st-annschurch.org

GALOT's PDRA

Join the racing excitement at this year's Professional Drag Racing Association event at the new GALOT Motorsports Park.

555 Dragstrip Rd., Benson
919-894-1662 galotmotorsportspark.com

October

Bentonville's Fall Festival and Living History

Enjoy period games, wagon rides and more! Costumed interpreters will demonstrate domestic skills from the 19th Century.

Bentonville Battlefield State Historic Site, Four Oaks
910-594-0789 nchistoricsites.org/bentonvi/

Smith's Farm Annual Fall Festival

Enjoy hayrides, pumpkins, millet maze, fishing, farm animals with produce and plants available. Admission.

Smith's Nursery 443 Sanders Rd., Benson
919-934-1700 smithsnurseryinc.com

Archer Lodge Country Auction

The annual event begins with BBQ plates and homemade desserts, followed by a country auction of crafts and food products.

Archer Lodge Community Building
919-550-1738 archerlodge.org

Car Cruize In and Tractor Show

Enjoy fun and fellowship while viewing cars and trucks built in 1975 or before along with games and live bluegrass music.

The Grocery Bag, 4879-A NC Hwy 42 E., Clayton
919-553-4088

Clayton Fear Farm & Daytime Activities

Hayrides, pumpkins in the field on the vine, jumping pillow, corn maze and several other activities.

Boyette Family Farms, 1620 Loop Rd., Clayton
919-553-0016 claytonfearfarm.com

Clayton Piano Festival

Enjoy a host of fun, family-oriented outreach shows, innovative classes for local music students and accessible, festive concert performances by world renowned guest artists.

121 E. Main St., Clayton
919-606-9703 claytonpianofestival.org

Historical Ghost Walk

Small groups will be guided through the cemetery where costumed re-enactors will tell stories about famous (and perhaps infamous) persons buried there.

Riverside Cemetery, corner of South Second and Church Streets, Smithfield
919-934-2836

Johnston County Heritage Quilt Show

The event will feature quilts made for service projects by the Jo Co Quilters and quilts on show.

2736 NC 210 Hwy, Smithfield
919-989-5380

Lazy O Farm Maze Dayz

Fun Farm Education, millet maze with 30 plus activity stations, hayrides, pumpkin patch, farm animals and picnic area.

October 1- 31. By appointment.
3583 Packing Plant Rd., Smithfield
919-934-1132

N.C Grape Stomp Festival

You're invited to "squish, sip and stomp" at this family-friendly festival celebrating the grape tastings, games, barbecue sauce contest and even a Lucille Ball look-alike contest.

275 Bowling Springs Dr., Angier
919-894-7700 gregoryvineyards.com

Railroad Days Festival

Come join us in Uptown Selma as we celebrate our rail heritage with our Annual Railroad Days Festival with a 5K run, parade, crafts, food, children's area, and a variety of entertainment.

Uptown Selma
919-975-1411 selma-nc.com/railroad-days-festival



Each Saturday from 10am-3pm the Museum is featuring a traditional trade, craft or art on-site. Vendors demonstrate traditional skills and often have items for sale. All activities are included with regular admission to the Museum and annual passes are available.

Tobacco Farm Life Museum

709 N. Church St. | Kenly, NC 27542

919-284-3431

tobaccofarmlifemuseum.org

The Shindig

Enjoy some of the best craft brewers around with a stellar line up of music featuring some of the best Americana and Bluegrass music from national acts to local favorites.

110 W. Main St., Clayton

919-816-6969 or 919-438-8555 theshindig.net

Spirits & Spirits Costume Ball

Halloween costume ball and party with dance music all night, food, and prizes for best costumes.

826 Pine Level-Micro Rd., Pine Level

919-965-3350 hinnantvineyards.com

Wilson's Mills Pumpkin Festival

Come out the 2nd weekend in October for a family friendly event with vendors, children's activities and costume contest, dunking booth, music, food, antique farm equipment display, 5k run/walk.

Downtown, Wilson's Mills.

919-938-3885 wilsonsmillsnc.org

November

American Music Jubilee Christmas Show

Take a nostalgic trip back to an innocent age when anticipation of Santa's visit made the holidays magical. Enjoy gospel favorites and the contemporary beat of hits like "Christmas in Dixie". Matinees and evening shows.

Rudy Theatre, 300 Raiford St., Selma

919-202-9927 amjubilee.com

Downtown Smithfield Wine Walk

Walkers visit businesses in the downtown district to sample wines at many locations.

119 N. Third St., Smithfield

949-934-0887 downtownsmithfield.com

Lazy O Farm Turkey Dayz

Bring your Thanksgiving feast to the farm with picnic areas, hayrides, fun farm education and farm animals. By appointment.

3583 Packing Plant Rd., Smithfield

919-934-1132

Meadow Lights

The largest and oldest Christmas light display in eastern NC. Also features the largest candy store with over 300 varieties of candy.

4546 Godwin Lake Rd., Benson

919-669-5969 meadowlights.com

Princeton Veterans Day Celebration

Join the celebration and support those in service to our country past and present with a parade, contests, entertainment, guest speakers and more!

Center & Edwards Sts., Princeton

919-965-5661 myprincetonnc.com



December

Bentonville's "A Civil War Christmas" Holiday Open House

Come celebrate a Civil War Christmas with costumed interpreters will decorate the kitchen in festive themes using natural materials such as holly, magnolia, cotton stalks, fruit, cranberry & popcorn strands.

Bentonville Battlefield State Historic Site, Four Oaks.

910-594-0789 nchistoricsites.org/bentonvi/

American Music Jubilee Christmas Show

Take a nostalgic trip back to an innocent age when anticipation of Santa's visit made the holidays magical. Enjoy gospel favorites and the contemporary beat of hits like "Christmas in Dixie". Matinees and evening shows.

Rudy Theatre, 300 Raiford St., Selma

919-202-9927 amjubilee.com

Lights on the Neuse

Come for family Christmas fun to view Christmas lights by hayride. Visit with Santa and see the 3D Christmas Barn. Stand by the fire to warm up and roast marshmallows to make s'mores.

Boyette Family Farms, 1620 Loop Rd., Clayton

919-553-0016 lightsontheneuse.com

New Year's Eve at The Farm

Ring in the new year at The Farm with wonderful music and dancing. Featuring new bands each year.

215 Batten Rd., Selma

919-750-5464 thefarmnc.com

Meadow Lights

The largest and oldest Christmas light display in eastern NC. Also features the largest candy store with over 300 varieties of candy.

4546 Godwin Lake Rd., Benson

919-669-5969 meadowlights.com



For cultural arts events at several venues
around the county, check our events calendar
for dates and times

johnstoncountyevents.com

We hope you visit us often!