

KANSAS CITY < KS



Kansas
City
Kansas

Convention & Visitors Bureau, Inc.

(913)321-5800

www.VisitKansasCityKS.com

GROUP TOUR Planner

CUSTOM ITINERARIES

Impress your group with
behind the scenes
tours and more!

PAGE. 10

Plan Your Trip



Unique Group Tours

Catch up on your Kansas history, watch marbles being made, learn about the many ethnic groups who settled here, or see some of the history of modern medicine. These and more adventures await you in Kansas City, KS.



Fun For All

Tasting the World's Hottest Sauce, cheer on the Kansas City T-Bones, hayrides and apples in the Fall, trying your hand at Hollywood Casino or tasting Kansas grown wines, are a few of the many activities we can plan for your groups.



Exclusive Offers

Check out our website, VisitKansasCityKS.com for ever changing offers.

Follow us.



[/visitkck](https://www.pinterest.com/visitkck)



[/visitkck](https://twitter.com/visitkck)



[/visitkansascityks](https://www.facebook.com/visitkansascityks)



Welcome to Kansas City, Kansas!

Kerry Green

Meeting, Group and
Event Manager
Kansas City, KS CVB

Kerry@visitkansascityks.com

Kansas City, Kansas

Convention & Visitors

Bureau, Inc.

P.O. Box 171517

Kansas City, KS 66117

(913)321-5800

(800)264-1563

Fax: (913)371-0204

visitKansasCityKS.com



**Kansas
City
Kansas**

Convention & Visitors Bureau, Inc.

Welcome to Kansas City, on the Kansas side! Kansas City, Kansas is a leading tourist location in the state of Kansas and the Kansas City metropolitan area. We are excited you are considering us for your next tour!

As the perfect location, we are just a short distance from several other cities. You can travel east into Kansas City, Missouri; south to Overland Park, Kansas; north to Fort Leavenworth and Atchison, Kansas and west to Lawrence and Topeka, Kansas.

The staff of the Kansas City Kansas Convention & Visitors Bureau is available to assist you with your group planning needs. We are happy to provide information on a variety of attractions, hotels, restaurants, shopping and activities. We welcome the opportunity to send you brochures, sample itineraries or general information at your request.

Whatever your needs, we will work to make your visit memorable.

BRIEF HISTORY INFORMATION

Kansas City, Kansas and Wyandotte County are located on the banks where the Kansas and Missouri rivers meet. Wyandotte County consists of three cities: Kansas City, Kansas, Bonner Springs, Kansas and

Edwardsville, Kansas. Located in the heart of the Midwest, we are accessible from everywhere.

Legendary Kansans and historical figures such as Lewis and Clark are a part of our history. See the place where Lewis and Clark camped and tour The Legends Outlets Kansas City to learn about Dwight Eisenhower, Amelia Earhart, Bob Dole and other great Kansans. Visit the many historical sites which make the city such an interesting place to visit and live.

Hollywood Casino, Schlitterbahn Waterpark Kansas City, Children's Mercy Park, Kansas Speedway, The Great Wolf Lodge, Nebraska Furniture Mart, Cabela's, Community America Ballpark, Moon Marble and Legends Outlets Kansas City are only a few sites waiting to welcome you. Many national and local restaurants are located in Kansas City, Kansas for your dining experience. From Bar-B-Q to steaks, we have something for everyone. If shopping is your pleasure, we can accommodate you! From western wear to New York City runway fashions, we have it all.

As you plan for your next tour, we hope that you consider all that Kansas City, Kansas have to offer. Contact the Kansas City Kansas Convention & Visitors Bureau for additional information.

HELPFUL INFORMATION

AIRPORT

Kansas City International (MCI)
816-243-5219 or www.flykci.com

AIRLINES SERVING KCI (MCI)

Air Canada	Sea Port
AirTran Airways	Southwest
Alaska Airlines	Spirit
American	United
Delta	US Airways
Frontier	

DISTANCE FROM MAJOR CITIES

Chicago: 512 miles
Denver: 600 miles
St. Louis: 251 miles
San Francisco: 1,803 miles
Dallas: 552 miles

TRAIN

AMTRAK- Service to Kansas City from over 500 destinations.
amtrak.com or 816-962-5399

LOCAL BUS SERVICE

The METRO- The city's public bus system is affordable and convenient. For a complete listing of fares & routes, visit kcata.org or call 816-346-0200 for general information.

MAJOR HIGHWAYS

Interstates

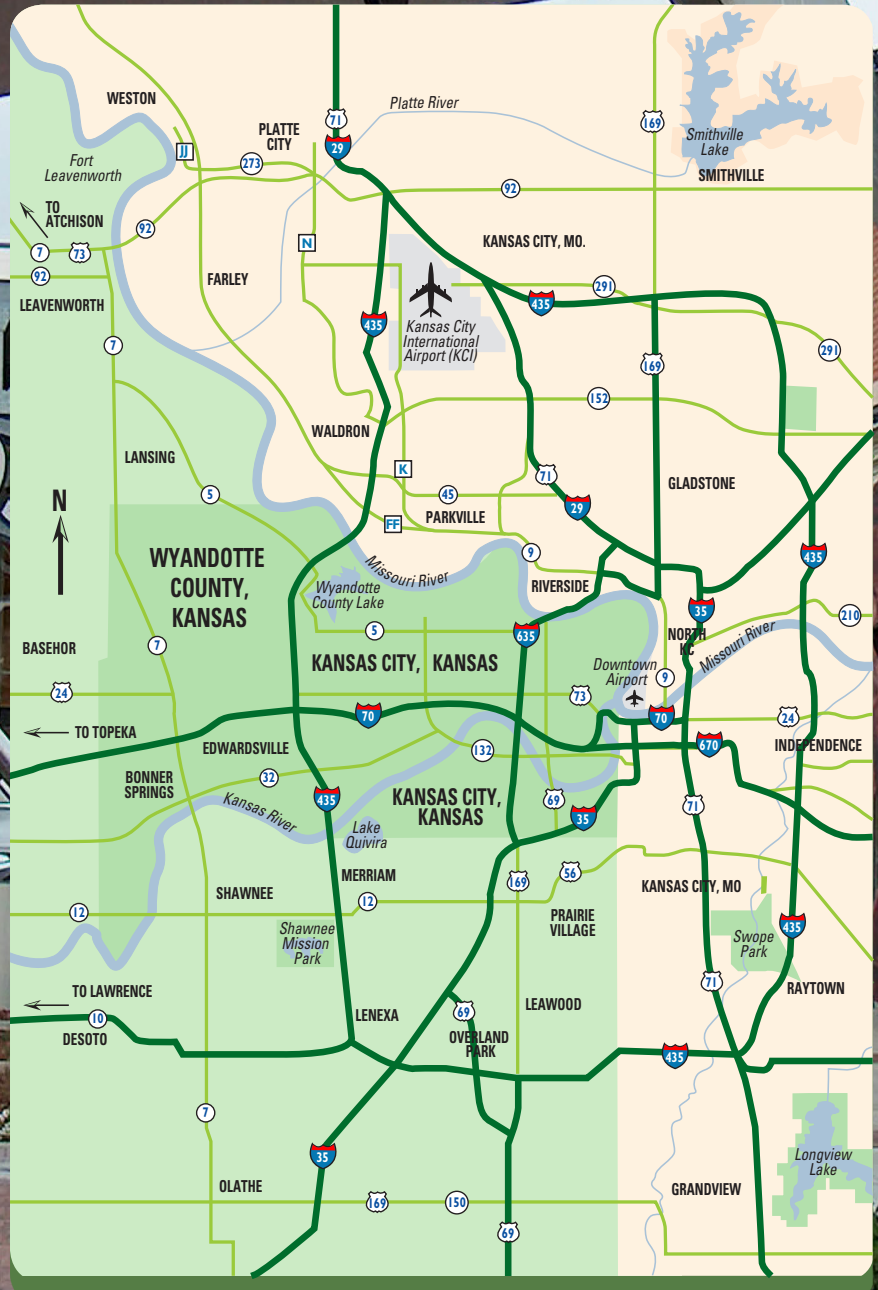
East - West: I-70, I-435
North - South: I-29, I-35, I-435

U.S. / Kansas

East - West: US-24, US-40, K-32
North - South: US-69, US-169, K-7

CLIMATE - AVERAGE TEMPERATURE

Jan: 29.1	May: 65.1	Sept: 69.7
Feb: 32.8	June: 74.4	Oct: 58.5
March: 43.3	July: 79.4	Nov: 44.3
April: 55.3	Aug: 77.7	Dec: 33.1



Shopping



CABELA'S
10300 Cabela Drive
913-328-0322
www.cabelas.com
Retail showroom is 180,000 sq. ft. of hunting, fishing and related outdoor gear store. Also includes a free 11,500 sq. ft. Mule Deer Country Museum with the world's

largest collection of life size trophy mule deer in natural surroundings. Store includes laser arcade, archery, art gallery, aquarium, furniture department, gun library, restaurant, general store, bargain cave and gift shop. Guided tours by appointment. Motorcoach parking available. Map Locator F4

MOON MARBLE COMPANY STORE

600 E. Front Street
Bonner Springs, KS
913-441-1432
www.moonmarble.com

Machine made and handmade marbles galore by various artists. Learn about glass working and marble history as you watch a marble making demonstration. Peruse the displays of antique marble toys, play marble games and visit the gift shop for unusual timeless toys. Map Locator G5

NEBRASKA FURNITURE MART

1601 Village West Parkway
913-288-6200
www.nfm.com

Now over 1 million sq.ft. home furnishings superstore is awesome in size, quantity and selection. Carries everything from furniture to flooring to appliances and electronics. Guided tours by appointment. Map Locator F4



LEGENDS OUTLETS KANSAS CITY

1843 Village West Parkway
913-788-3700
www.legendsshopping.com
This upscale-outdoor shopping center celebrates the legends of Kansas from the past and present through statues, fountains, banners

and landscapes. Can be enjoyed as an audio tour and the shopping center also features scavenger hunts. Many of The Legends shops are the first or only of their kind in the Midwest. The Legends contains many shops you won't want to miss, including Ann Taylor, Old Navy, Books-A-Million, and Off-Broadway Shoes. Map Locator F4

Historical Attractions

F.L. SCHLAGLE LIBRARY

4051 West Drive
Wyandotte County Lake Park
913-299-2384

Year-round interactive library, nature center and nature trail offer scientific, educational, cultural information and recreational opportunities to visitors of all ages. Guided tours by appointment. Map Locator C5

GRINTER PLACE STATE HISTORIC SITE

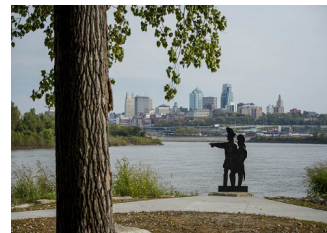
1420 S. 78th Street
913-299-0373
www.ksks.org/grinter_place

Home of Moses Grinter, one of Kansas' earliest settlers, who established the first ferry across the Kansas River. The 1857 Georgian vernacular home was built on the Delaware Indian Reserve. One of the oldest farmhouses in Kansas. Guided tours by appointment. Map Locator I6

HURON INDIAN CEMETERY

7th & Ann
913-721-1078

This cemetery was established in 1843 after the forced migration of the Wyandotte Nation from their homes near Upper Sandusky, Ohio. Located at a high point overlooking the meeting of the Kansas and Missouri rivers. Map Locator G12



LEWIS AND CLARK HISTORIC PARK AT KAW POINT

1 River City Drive
913-573-8362
www.lewisandclarkwyco.org

The Lewis and Clark Expedition arrived at Kaw Point, at the confluence of the Kansas and Missouri river in Kansas City, KS on

June 26, 1804. This six acre park, which opened in 2004, features an open air education pavilion with interpretive signs about the expedition as well as an interactive computer element. Trails run through the woods and along the river. Boat ramp and docking area allow river access. Map Locator G12

OLD QUINDARO MUSEUM

3432 North 29th Street
913-244-8497
www.OldQuindaroMuseum.org

The museum seeks to preserve the rich history of the Quindaro community, where runaway slaves found sanctuary. Find old-fashioned shackles reminiscent of the ones used to confine a slave and other items on display inside the museum.



ROSEDALE MEMORIAL ARCH

35th and Booth Streets
913-573-8327

A tribute to World War I soldiers, and based on Paris' Arc de Triomphe, the Arch was designed by Rosedale resident John LeRoy Marshall and was dedicated

in 1923. In 1993, a monument was added to honor soldiers of WWII and the Korean and Vietnam conflicts. Hours: open 24 hours. Admission: free.

STRAWBERRY HILL MUSEUM AND CULTURAL CENTER

720 N. 4th Street
913-371-3264
www.strawberryhillmuseum.org

This Queen Anne style home built in 1887 hosts a museum that preserves and highlights the diverse ethnic cultures that immigrants from Eastern Europe brought to Kansas City, Kansas in the early 1900's. Beautifully decorated during the holidays. Group tours are available by appointment. Map Locator G12

ATTRACTIONS



SUMNER HIGH SCHOOL ALUMNI ROOM

1610 North 8th Street
913-299-0793
The archival records of Sumner High School - the only legislated African-American High School in the state of Kansas - includes photos, trophies, school

newspapers and books written by alumni, on display at Sumner Academy. Hours: second Tuesday & fourth Thursday of the month, 10 a.m. - 2 p.m. or by appointment.



QUINDARO RUINS OVERLOOK & JOHN BROWN STATUE

27th & Sewell Streets
913-573-8327
The Quindaro Ruins Overlook provides a rare window to the past, with the stone and brick foundation offering tangible evidence of a largely unrecognized chapter

in American history. The statue pays homage to John Brown, one of the nation's most staunch opponents of slavery.

QUINDARO UNDERGROUND RAILROAD MUSEUM

3436 North 27th Street
913-321-1220

Housed in the historic Vernon MultiPurpose Center, the museum has several artifacts and documents that tell the story of the town and people of Quindaro. Hours: Monday-Friday 9 a.m. - 1 p.m. or by appointment.

WORLD WAR II Bomber Builders Monument

631 N. 126th Street
Bonner Springs, KS
913-573-5002

This monument honors employees who built 6,608 B-25 bombers in the Fairfax District during World War II. Open daylight hours. Admission: free, but donations appreciated.



WYANDOTTE COUNTY HISTORICAL SOCIETY AND MUSEUM

631 N. 126th Street
Bonner Springs, KS
913-573-5002

www.wycomuseum.org
The museum houses one of the nation's remaining Native-American dugout

canoes, a rare 1903 American la France Steam Fire Engine and the Trow-bridge Research Library and Archives. Hours: Monday-Friday 9 a.m. - 4 p.m., Saturday 9 a.m. - Noon. Closed on Saturdays: October - April.

Sports



COMMUNITYAMERICA BALLPARK

1800 Village West Parkway
913-328-2255
www.tbonesbaseball.com

The Kansas City T-Bones minor league baseball team plays at the CommunityAmerica Ballpark

in Village West. Unique and fun. This is a great evening group activity. Guided tours available by appointment. Map Locator G4

DUB'S DREAD GOLF COURSE

12601 Hollingsworth Road
913-721-1333
www.dubsdreadgolfclub.com

In a quiet country setting, just minutes from the city. Map Locator C2



KANSAS SPEEDWAY

400 Speedway Blvd.
913-328-3300

www.kansasspeedway.com
Tour the 1.5 mile racetrack. Visit Victory Lane, garages and infield. This tour gives the behind the scenes view of racing. Popular with racing fans and those new

to the sport. Group tours by appointment. Map Locator G4

LAKESIDE SPEEDWAY

5615 Wolcott Drive
913-299-2040

www.lakesidespeedway.net

This dirt track showcases Modifieds, Grand Nationals and Factory Stocks. National touring series hosted here for over 40 years! Racing on Friday nights - April - October, call for event schedule. Map Locator C3



CHILDREN'S MERCY PARK

1800 Village West Parkway
913-387-3400
888-4KC-GOAL

www.sportingkc.com
Join Sporting KC in the newly built, 18,500-seat Children's Mercy Park. This state-of-the-art venue is the first soccer stadium in

North America to combine the best attributes of European and South American soccer stadia with the modern amenities American sports fans desire. Map Locator E7

PAINTED HILLS GOLF COURSE

7101 Parallel Parkway
913-334-1111

www.paintedhillsgolfclub.com

High on a hill overlooking the city-rolling fairways lined with large trees. Map Locator E7

SUNFLOWER HILLS GOLF COURSE

122nd Street & Riverview Road
913-721-2727

www.sunflowerhillsgolfcourse.com

This challenging public championship course has long par 4's and exciting par 3 holes. Map Locator F2



WYANDOTTE COUNTY LAKE AND PARK

91st Street &
Leavenworth Road
913-573-5002

Includes 1,500 acres of wooded areas, 400-acre lake with marina, kids' fishing lake, picnic shelters and rest rooms. The largest

playground in WyCo, boat rentals, fishing, abundance of wildlife, bridle trail and archery range. Map Locator C5

ATTRACTIONS

Entertainment

7TH STREET CASINO

803 N. 7th Street
866-944-IWIN (4946)
www.7th-streetcasino.com

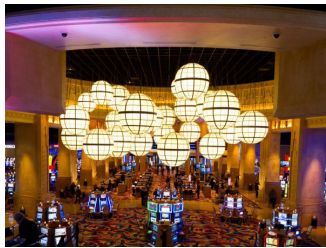
Over 400 Gaming machines, historic location, three bars, great food, Lucky 7 Club, promotions, tournaments and jackpots. The Casino Cafe – inside the 7th Street Casino – serves breakfast and lunch daily. Map Locator F12



DAVE & BUSTER'S

1843 Village West Parkway
913-981-6815
www.daveandbusters.com
Serving up quality food in big portions in a fun, upscale atmosphere. Along with great food, Dave & Buster's also features the latest and greatest electronic

interactive entertaining in its famous Million Dollar Midway with traditional games such as billiards and shuffleboard. Map Locator F4



HOLLYWOOD CASINO AT KANSAS SPEEDWAY

777 Hollywood Casino Blvd
913-288-9300
hollywoodcasinokansas.com
Discover 2,000 of the newest slot machines and 52 action-packed table games including a 12-table Poker Room. Dine like a

star at one of the casino's four restaurants onsite and enjoy red-carpet service you'd expect to find with a name like Hollywood. Map Locator G4



KANSAS CITY RENAISSANCE FESTIVAL

620 N. 126th St.
Bonner Springs, KS
913-721-2110 /
800-373-0357
www.kcrenfest.com
Storybook recreation of a 16th-century English village. Live

entertainment, food, fun, top 100 events in North America. Hours: 10am - 7pm weekends; Labor Day, Columbus Day, rain or shine. Map Locator L1



AMC LEGENDS 14

1841 Village West Parkway
913-428-2992
www.amctheatres.com
Movie lovers are in for a treat at this 14-screen, state-of-the-art complex which features amenities unlike any other theatre in the midwest. The main

theatre features a four-story-high screen with a VIP balcony lounge, many of the theatres are 3-D. Map Locator F4

Dining



CHIUSANO'S BRICK OVEN PIZZERIA

1713 Village West Parkway
913-299-8787
www.chiusanospizza.com
Chiusano's Brick Oven Pizzeria is "Mom & Pop" locally owned and operated. Featuring full service, artsian, European style brick oven

pizza. Inspired by familu recipes from the Mountains along the coast of Southwest Italy. Each dough is double kneaded by hand. Sauce is prepared in-house. Map locator F4.

CULVERS

1925 Prairie Crossing
913-400-7300
www.culvers.com

Feast on juicy butterburgers. Indulge in irresistible frozen custard. Named best burger chain in the USA. Map Locator F4



FAMOUS DAVE'S BAR-B-QUE

3120 Village West Parkway
913-334-8646
www.famousdaves.com
Kansas City's award winning BBQ at its finest. A variety of flavors prepared with special attention to freshness and food quality. Group tours welcomed! Map Locator F4

FIVE GUYS BURGERS & FRIES

1803 Village West Parkway
913-334-4700
www.fiveguys.com

Five Guys is famous for one thing; their burgers. Juicy, greasy and delicious. Five Guys burgers are some of the best in the country. With an unlimited amount of toppings and the joy of watching it made right before you, there is nothing like a Five Guys burger. Map Locator F4

JAZZ: A LOUISIANA KITCHEN

1859 Village West Parkway
913-328-0003
www.jazzkitchen.com

An authentic French Quarter café, Jazz will bring the tastes, sights and sounds of New Orleans Offering fine Cajun Cuisine and live entertainment. Map Locator F4

STIX

1847 Village West Parkway
913-299-3788
www.stixdining.com

Exciting authentic pan-Asian destination restaurant, featuring cuisine from Thailand, Japan, China and more. Group seating or dining room - the choice is yours. Map Locator F4



SLAP'S BBQ

553 Central Avenue
913-213-3736
www.slapsbbqkc.com
Slap's BBQ is the evolution of Squeal Like A Pig BBQ's competition cooking team. Featured on Destination America's BBQ Pitmasters and now a local favorite. Map Locator G12



LODGING AT A GLANCE

Hotel/Motel Contact Information	No. of Rooms	Price Range	Comp. Breakfast	Pool In/Outdoor	MTG. Space Capacity	Fitness Center / Spa	Restaurant On Site	Pets Allowed	Business Center	Wyandotte County Map Locator #	Accommodation Features & Amenities
Hilton Garden Inn & The Reardon Convention Center 520 Minnesota Avenue 913-342-7900/ 800-445-8667 www.hiltongardeninn.com	147	*		I	2000	F	X		X	H12	Located in downtown Kansas City, KS. Hotel features full-service restaurant and lounge, seamless entry to the convention center. Ideal for expos, conventions and banquets. Call for meeting / banquet space layout.
Great Wolf Lodge 10401 Cabela Drive 913-299-7001/800-608-9653 www.greatwolf.com	281 Suites	***		I/O	200	F/S	X		X	F4	Located in Village West. Kansas City's premier indoor waterpark resort features restaurant, spa, arcade, gift shop, banquet and meeting space. Call for meeting / banquet space layout.
Oak Tree Inn Kansas City 501 Southwest Boulevard 913-677-3060/800-368-1741 www.oaktreeinn.com	112	*	X	O	150	F		X	X	I12	Easy access to I-35, I-70 and KC's nightlife & entertainment district. Free local shuttle service within 3 miles. Convenient access to restaurants. Call for meeting / banquet space layout.
Best Western KC Speedway Inn & Suites 10401 France Family Drive 913-334-4440/855-527-7333 www.bestwestern.com	82	*	X	I	35				X	F4	Located in Village West, convenient access to restaurants. Meeting room for 35, Boardroom for 15, Business Center, High speed and WiFi.
Holiday Inn Express & Suites Kansas City at KU Medical 3932 Rainbow Blvd 913-236-8700 / 888-HOLIDAY www.hiekansascity.com	83	*	X	I	50	F	X		X	I12	Located directly across from KU Medical Center. Convenient access to area restaurants & entertainment districts.
Holiday Inn Express Village West 1931 Prairie Crossing 913-328-1024/ 888-HOLIDAY www.hiekc.com	96	**	X	I	50	F			X	F4	Adjacent to Legends shopping center and entertainment district. Meeting space available. Convenient access to many restaurants.
Country Inn & Suites 1805 N. 110th Street 913-299-4700 / 800-456-4000 www.countryinns.com	116 Suites	**	X	I	50	F			X	F4	Located in Village West adjacent to The Legends shopping center and entertainment district.
Super 8 13041 Ridge Avenue Bonner Springs, KS 913-721-3877 / 800-454-3213 www.super8.com	83	*	X	I	30			X		J1	Easy access to I-70. Located in Bonner Springs, KS.

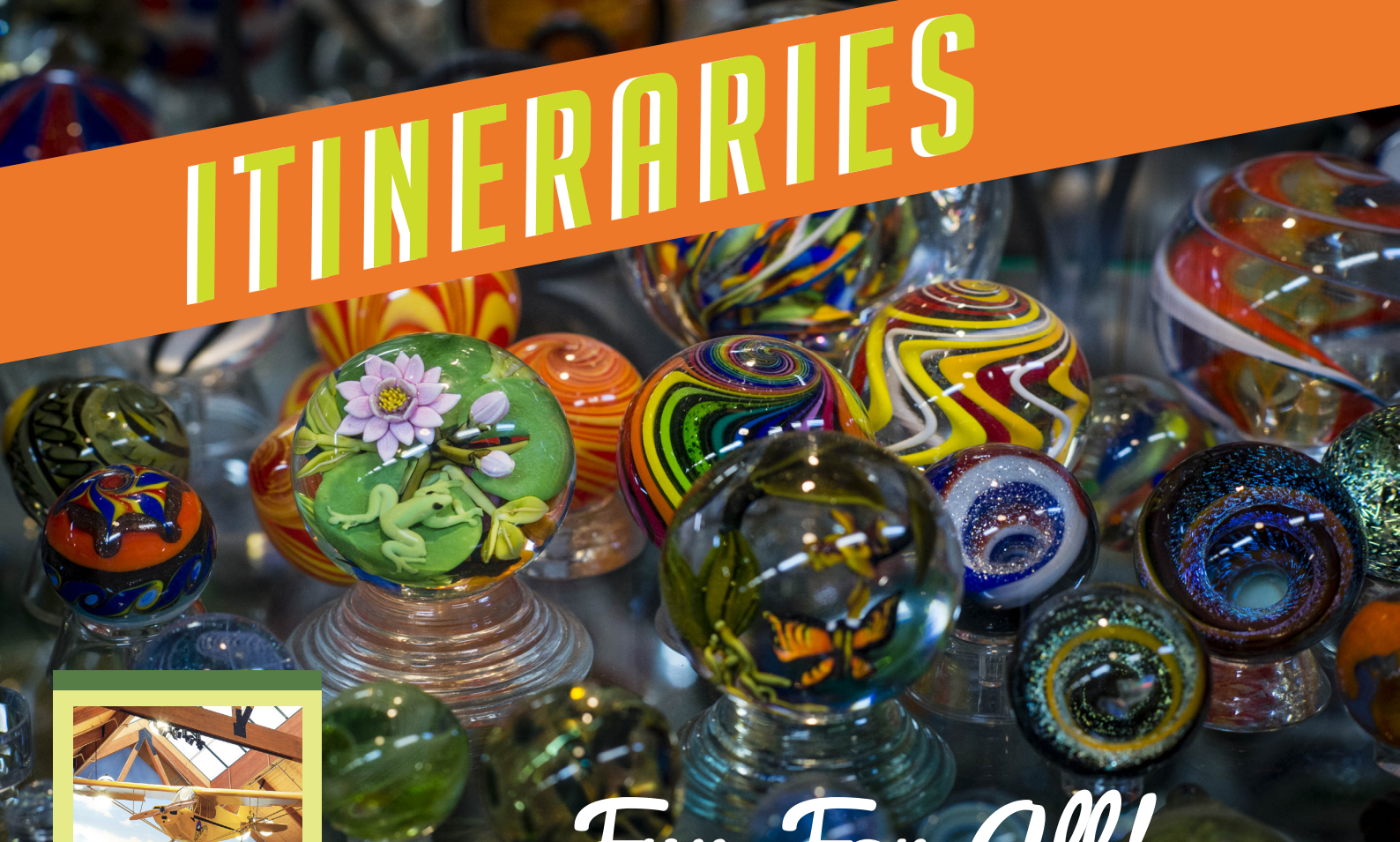
* \$150 & Under ** \$151 - \$250 *** \$251 & Over

LODGING AT A GLANCE

Hotel/Motel Contact Information	No. of Rooms	Price Range	Comp. Breakfast	Pool In/Outdoor	MTG. Space Capacity	Fitness Center / Spa	Restaurant On Site	Pets Allowed	Business Center	Wyandotte County Map Locator #	Accommodation Features & Amenities
Chateau Avalon 701 Village West Parkway 913-596-6000/877-522-8256 www.chateauavalonhotel.com	61	* * *	X		24					G4	Located across from Village West. Styled after a French chateau, luxury suites feature unique themes, two-person Chromotherapy jetted tubs and breakfast in bed.
Comfort Suites Speedway 3000 N. 103rd Terrace 913-299-4466 / 877-424-6324 www.comfortsuites.com	84 Suites	*	X	I	20	F			X	G4	Located conveniently at the intersection of I-435 and Leavenworth Road.
American Motel 7949 Splitlog Avenue 913-299-2999 www.myamericaninn.com	157	*	X	O							Easy access to 78th Street from I-70.
Candlewood Suites 10920 Parallel Parkway 913-788-9929/888-226-3539 www.candlewoodsuites.com	98 Suites	*				F		X	X	F4	Fully equipped kitchens and comfortable recliners, free use of washer and dryers, free DVD library. Adjacent to Village West.
Comfort Inn 234 N. 78th Street 913-299-5555/ 877-424-6423 www.comfortinn.com	45	**	X	I		F			X	H6	Easy access to 78th Street from I-70. Restaurants nearby.
Days Inn – Kansas Speedway 7721 Elizabeth Avenue 913-334-3028 / 800-329-7466 www.daysinn.com	78	*	X	I		F		x		G4	Easy access to I-70. Guest rooms feature microwave & mini-fridge in each suite.
Hampton Inn at Village West 1400 Village West Parkway 913-328-1400/ 800-HAMPTON www.kchampton.com	76	**	X	I		F			X	F4	Economy guest rooms include expanded continental breakfast and convenient access to many restaurants.
Holiday Inn Express 13031 Ridge Drive Bonner Springs, KS 913-721-5300/ 888-HOLIDAY www.hiexpress.com/bonnerrsprings	63	**	X	I		F		X		J1	Easy access to I-70. Located in Bonner Springs, KS.
Residence Inn Kansas City at The Legends 1875 Village West Parkway 913-788-5650 / 888-236-2427 www.marriott.com/mcisp	108	**	X	I/O	30	F		X	X	F4	Designed for extended-stay, enjoy spacious living rooms, full kitchen, evening social hour and sports court.

There are also many small, locally owned motels in the area. For a complete list, see www.VisitKansasCityKS.com or call 800-264-1563.

ITINERARIES



Fun For All!

DAY ONE

CABELA'S

The Mule Deer Museum & the enormous aquarium give minds a work out with hours of edutainment.

CHILDREN'S MERCY PARK & SPORTING KC

Go behind the scenes and view this state of the art stadium like you've never seen before. From February to November you are invited to come and experience the stadium and all it has to offer. Enjoy the locker rooms and exclusive premium areas, and learn about the intricacies of Sporting Kansas City's home.

Check into hotel

LUNCH AT ARTHUR BRYANTS

Legendary Kansas City Barbeque started in Kansas City and continues today. Slow smoked, then mellowed to the peak of flavor.

COMMUNITYAMERICA BALLPARK & THE KANSAS CITY T-BONES

Enjoy KC's hometown T-Bones in action!

DAY TWO

Breakfast at hotel.

MOON MARBLE COMPANY STORE

Discover how handmade marbles are made and play old-fashioned marble games. Shop for long-forgotten games and treasures.

NATIONAL AGRICULTURAL CENTER & HALL OF FAME

Explore exhibits and living history displays chartered by congress as a memorial to the American Farmer.

LUNCH AT DAVE & BUSTER'S

Eat and play at Dave & Buster's, featuring the latest electronic interactive entertainment and traditional games. Don't miss shuffleboard and billiards.

LEGENDS OUTLETS KANSAS CITY

The mix between upscale outlet and favorite shopping chains meet at Legends Outlets Kansas City. Excitement like Dave & Buster's makes the day even more exciting.

Below are recommendations of additional hotels, activities and restaurants:

Great Wolf Lodge (F4)

Hampton Inn (F4)

Holiday Inn Express at the Legends (F4)

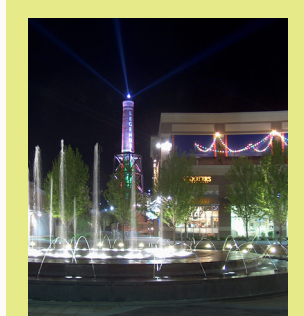
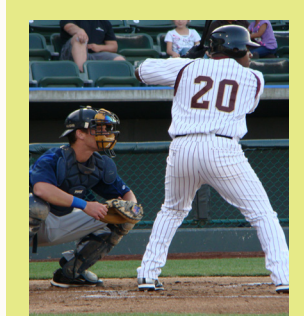
Cabela's (F4)

Kansas Speedway (G4)

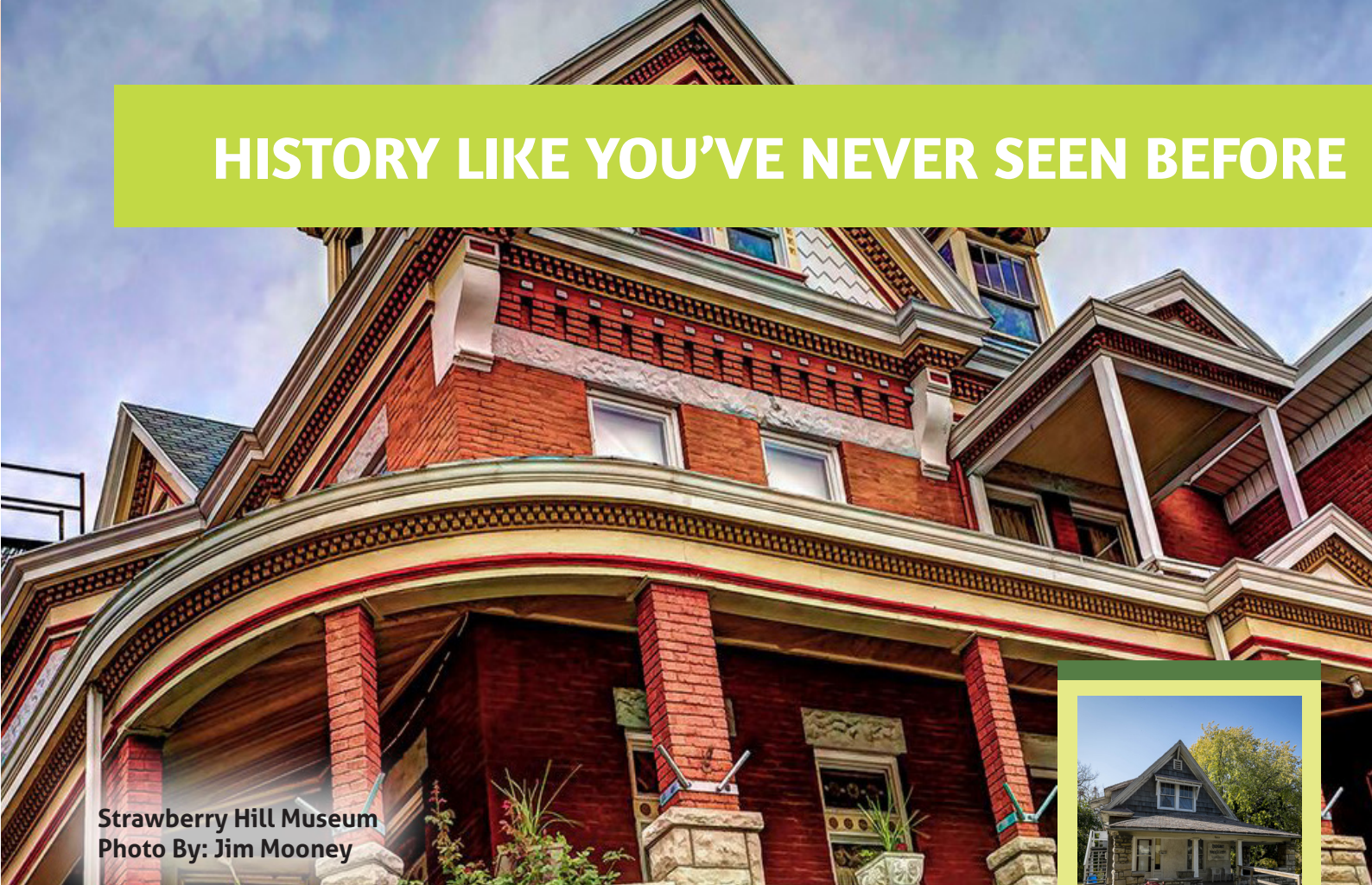
Fritz's Railroad Restaurant (F12)

Culver's (F4)

Schlitterbahn Waterpark Kansas City (F5)



HISTORY LIKE YOU'VE NEVER SEEN BEFORE



Strawberry Hill Museum
Photo By: Jim Mooney

STRAWBERRY HILL ETHNIC MUSEUM AND CULTURAL CENTER

Situated in a Queen Anne style home built in 1887, this museum preserves the diverse ethnic cultures that immigrants from Eastern Europe brought here in the early 1900's. The museum exhibits original art, music and dance from many cultures including Slovakia, Poland, Croatia, Ukraine, Lithuania, the Netherlands, Slovenia, Russia and Denmark.

QUINDARO OVERLOOK AND JOHN BROWN STATUE

The Quindaro Ruins and Underground Railroad archeological free port of entry off the Missouri River offers a rare window into the past. The Ruins stand as a monument to racial harmony and freedom. The John Brown statue is a life-size likeness of John Brown, an icon of the Underground Railroad in Kansas. Allow 1 1/2 hours for the Quindaro area.

GRINTER PLACE STATE HISTORICAL SITE

Home of Moses Grinter, one of Kansas' earliest pioneer settlers, who established the first ferry across the Kansas River. The 1857 home built on the Delaware Indian reserve may be the oldest farmhouse in Kansas.

LEWIS & CLARK PARK AT KAW POINT

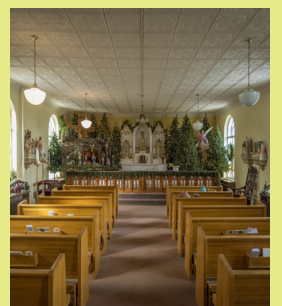
This park is the location where the Kansas River flows into the Missouri River and where Lewis and Clark Expedition arrived on June 26, 1804. A scenic trail allows visitors to view the river and the Kansas City skyline. The trail also leads to an amphitheater and a large metal sculpture of Lewis and Clark. An open-air Education Pavilion has interpretive signs about the Lewis and Clark expedition.

SUMNER HIGH SCHOOL ALUMNI ROOM

The archival records of Sumner High School Alumni Room are on display at Sumner Academy. The exhibit includes photographs, trophies, documents, school newspapers, books written by Sumner Alumni associates and similar materials.

QUINDARO

Old Quindaro Museum and the Quindaro Underground Railroad Museum preserve and promote the historical and cultural awareness of the Underground Railroad in Kansas. The African American community of Quindaro held historical significance not only to the state of Kansas but to national history, as well during and after the Civil War.



Below are recommendations of additional hotels, activities and restaurants:

Candlewood Suites (F4)
Wyandotte County Museum (F2)
Joes KC Barbeque
Comfort Suites at the Speedway (G4)
Jazz: A Louisiana Kitchen (F4)

Korean/Vietnam War Memorial (C5)
Holiday Inn Express at the Legends (F4)
Italian Delight (F6)

GIRLS JUST WANNA HAVE FUN!



Château Avalon Tour

Discover many worlds under one roof. This château is perfect for your next get-a-way when enjoying all Kansas City has to offer.

Legends Outlets Kansas City

Upscale shopping at stores like Ann Taylor, Charming Charlies, BCBG and Off-Broadway Shoes. Don't forget to pamper yourself at Beauty Brands & the Cosmetic Store.

Lunch at Yard House

Enjoy an eclectic menu of American fusion cuisine, along with one of the world's largest selections of draft beers.

Rowe Ridge Winery

Located just north of Kansas Speedway, Rowe Ridge offers a large selection of wines. Walk in the vineyards, learn about the varieties of grapes and the fun and challenges of growing grapes in the Midwest.

END THE DAY AT HOLLYWOOD CASINO

Try your luck or enjoy dinner while overlooking Turn 2 of Kansas Speedway.

Below are recommendations of additional hotels, activities and restaurants that women will love:

7th Street Casino (F12)
Hollywood Casino (G4)
Nebraska Furniture Mart (F4)
Spa at Great Wolf Lodge (F4)
Stix (F4)

Holiday Inn Express at the Legends (F4)
Hampton Inn at Village West (F4)
Chisauno's Pizza (F4)

MYSTERY TOUR



Original Juan Specialty Store

Since 1998, Original Juan has been arousing your senses with tantalizing aromas of sauces, salsas, snacks and dips. Step up to the tasting table and try one of the 150 products manufactured here.

1889 Pizza

1889 uses quality ingredients to achieve the distinct "blistered crust" texture and authentic Neapolitan Pizza flavors which only comes from a hearth oven, wood-fired at a minimum of 900°F. Take time to learn the art of mozzarella cheese making while enjoying quirky to original pizzas, salads and more.

Cabela's

Tour the retail showroom, of hunting, fishing

and outdoor gear. See the worlds largest collection of life size trophy deer. Gaze into the aquarium.

Cider Hill Family Orchard

Take a hayride through the 25-acre orchards filled with 900 apple trees. Spend quality time in the pumpkin patch or go fishing in the pond. Apple season is July - November.

Check Into Hotel

End Your Day at d'Nile Wine Bar

Tour the beautiful Chateau Avalon and then enjoy a thematic and fun wine bar featuring wines, spirits, small plates and desserts located inside Chateau Avalon Hotel.



Below are recommendations of additional hotels, activities and restaurants you will love:

Lakeside Speedway (C3)
Holiday Inn Express at the Legends (F4)
7th Street Casino (F12)
Kansas City T-Bones (G4)

Hampton Inn at Village West (F4)
Danny's Bar & Grill (E4)
Sporting Kansas City (F4)
Hollywood Casino (G4)

A DESTINATION IN THE MIDDLE OF IT ALL!

ACCOMMODATIONS

- H4 American Motel
- J1 Back in Thyme
- I12 Oak Tree Inn
- H6 Comfort Inn
- G4 Comfort Suites at The Speedway
- J1 Cottonwood RV Park
- G4 Days Inn - Kansas Speedway

- H12 Hilton Garden Inn & Convention Center
- J1 Holiday Inn Express Bonner Springs
- I12 Holiday Inn Express & Suites Kansas City at KU Medical
- J1 Super 8
- F4 **Village West Area Hotels:**
 - Best Western KC Speedway Inn & Suites
 - Chateau Avalon
 - Candlewood Suites
 - Country Inn & Suites
 - Days Inn
 - Great Wolf Lodge
 - Holiday Inn Express at the Legends
 - Hampton Inn at Village West
 - Residence Inn Kansas City at The Legends



ATTRACTIONS

- F12 7th Street Casino
- F4 Cabela's
- F4 Children's Mercy Park (Sporting KC)
- G4 CommunityAmerica Ballpark (Kansas City T-Bones)
- F2 Cricket Wireless Amphitheater
- C2 Dub's Dread Golf Course
- C5 F.L. Schlagle Library
- I6 Grinter Place State Historic Site
- G4 Hollywood Casino

- G12 Huron Indian Cemetery
- G4 Kansas Speedway
- C5 Korean-Vietnam War Memorial
- C3 Lakeside Speedway
- F4 Legends Outlets Kansas City
- G12 Lewis and Clark Historic Park at Kaw Point
- H12 Memorial Hall
- J1 National Agricultural Center & Hall of Fame
- F4 Nebraska Furniture Mart

- E7 Painted Hills Golf Course
- L1 Renaissance Festival
- F5 Schlitterbahn Waterpark Kansas City
- G12 Strawberry Hill Museum and Cultural Center
- F2 Sunflower Hills Golf Course
- F4 Village West
- F2 Wyandotte County Historical Society & Museum
- C5 Wyandotte County Lake & Park

P.O. Box 171517
 Kansas City, KS 66117-0517
www.VisitKansasCityKS.com



**Kansas
 City
 Kansas**

Convention & Visitors Bureau, Inc.

(913)321-5800
 800-264-1563
 Fax: (913)371-0204