

## Aurora Dog Musers Winter Trail System

Non-motorized winter trail system

- Tread:** Snow - groomed for dog sled racing – 3’ - 8’ wide  
**Length:** 16 miles (25.6 kilometers)  
**Difficulty:** Easy to moderate  
**Activity:** Winter only – dog mushing, cross-country skiing and skjoring  
**Trailhead:** Large parking area; public toilet facilities  
**Nearest town:** Big Lake  
**Manager:** Aurora Dog Musers Club (primary manager)  
Representative: Roger Bliss (376-4743)  
MSB Land Management Division (secondary manager)  
(Phone 745-9867)

### *How to get there*

Aurora Dog Musers Winter Trail System is located south of Big Lake. From the intersection with the Parks Highway at MP 52.5 follow South Big Lake Road west for 5.7 miles to Echo Lake Drive, turn left and proceed south on Echo Lake Drive for a mile where the road splits, turn west onto Gonder Way, proceed 1/2 mile on Gonder Way and take another left onto the access road for Aurora Dog Musers race staging area. The road is gated and closed in the summer.

### *General description*

A winter trail system consisting of a series of loops that allow dog mushers (and other non-motorized trail users) to travel 3, 5, 7, 10, 12 or 16 miles depending on the route one takes. The trails traverse large swamps and Black Spruce forests and are generally wide enough for one dog sled (3-5’). In some places along the trails the tracks are wide enough for two sleds to pass. The trails must be traveled in a specific direction to avoid conflict with dog teams. They are well marked with directional

indicators and colors to indicate the length of the loop. At the south end of the trail system there is a connection to the Iditarod National Historic Trail.

### *Trail uses*

The Aurora Dog Mushing Trail System is maintained and managed for dog mushing by the Aurora Dog Mushing Club. It is available for use by the public during ‘non-racing’ days only. Cross-country skiing and skjoring are allowed, but must yield to dog teams.

### *\*Take note*

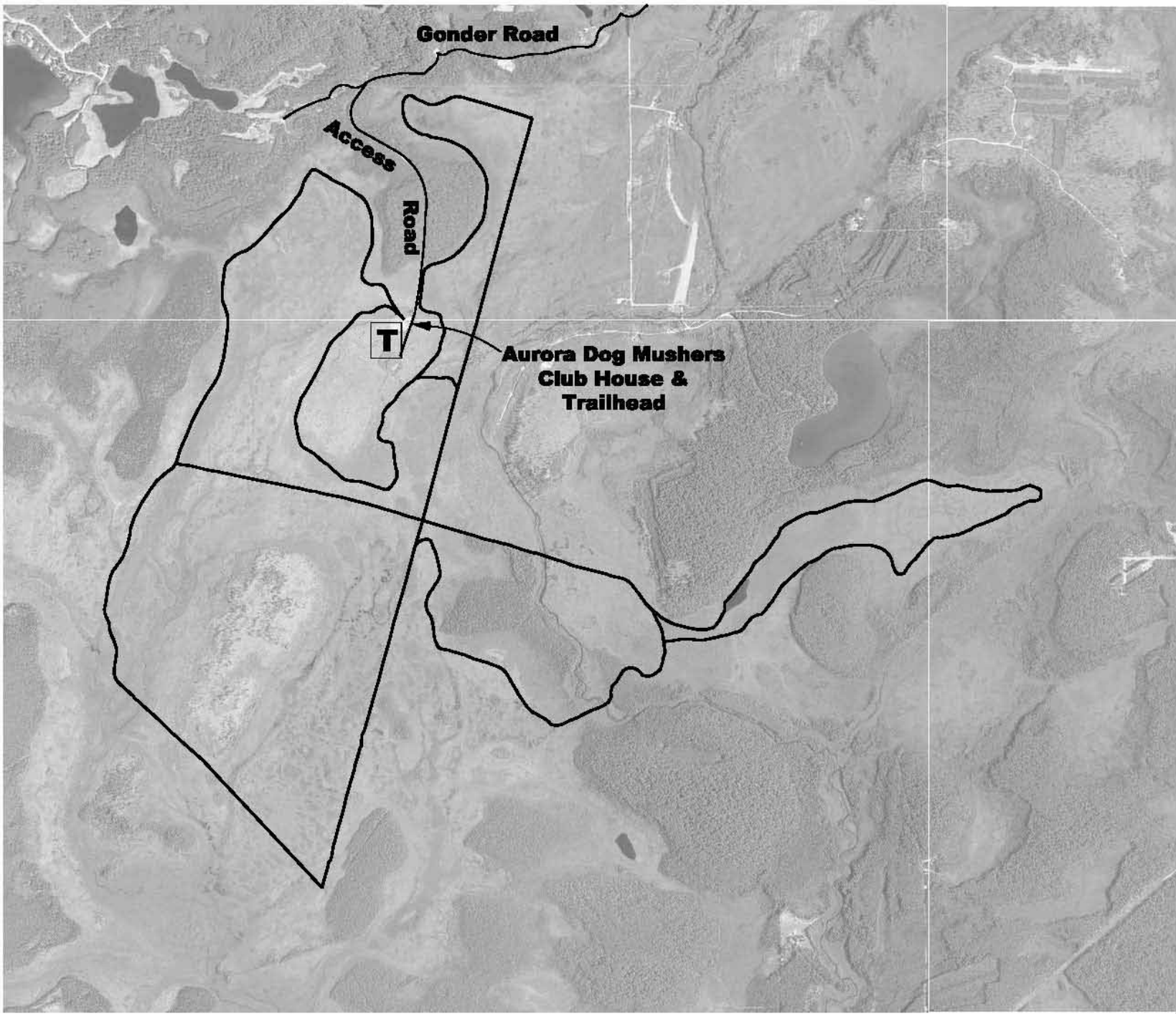
Many local professional dog mushers use this area for training and the Aurora Dog Musers use it for races. Please check with the Aurora Dog Musers Club for their race schedule and possible trail closures before using the trails.. Always follow the direction of the course and yield to dog teams. Loose dogs are prohibited. Always keep your dogs leashed (or harnessed) and under your control. Check their website for the latest information <http://www.auroradogmusers.org>

# Aurora Dog Musers Winter Trail



**Matanuska Susitna Borough  
Community Development Department  
350 E. Dahlia Avenue  
Palmer, Alaska 99645**

**(907) 745-9631  
[www.matsugov.us](http://www.matsugov.us)**



# LEGEND

**T** Trailhead & Parking

— Winter Trails

\* Trails open only when sufficient snow cover exists.

