



Release Date: September 23, 2016
Submission Deadline: November 18, 2016, 5:00 p.m.

REQUEST FOR PROPOSALS

WISDOM OF JOHN WOODEN PUBLIC ART INITIATIVE
MARTINSVILLE, INDIANA

1. PROJECT INTRODUCTION:

Rediscover Martinsville, Inc., an Indiana Main Street program in Martinsville, Indiana, invites both local and non-local artists to create and submit comprehensive designs for four public art installations as follows:

1. Stainless steel traffic signal box at northeast corner of Main and Jackson Street consisting of 4 side panels. Box dimensions and additional information can be found in Exhibits A and B.
2. Stainless steel traffic signal box at northeast corner of Main and Garfield Street consisting of 4 side panels. Box dimensions and additional information can be found in Exhibits A and B.
3. One flat, single-sided aluminum panel located on south side of corner marker in island at Main and Morton Street. See Exhibit C.
4. One flat, single-sided aluminum panel located on north side of corner marker in island at Main and Morton Street. See Exhibit D.

Artists are invited to submit no more than one (1) comprehensive design representing a detailed plan for a final, fully executed art piece should the design be selected. Submissions may come from an individual artist or a group consisting of up to four artists. An artist may not be a member of more than one (1) group. Collaborations of adults and children are encouraged. A cash prize of \$400 will be paid for the winning design and resultant final, fully executed artwork for each traffic signal box. A cash prize of \$100 will be paid for the winning design and resultant final, fully executed artwork for each marker panel. Production and installation costs will be paid for by Rediscover Martinsville with funding from the National Endowment for the Arts, Indiana Arts Commission, and Visit Morgan County, Indiana, with support from the Brown County Community Foundation.

The artist(s) will retain ownership of their work but grant(s) to Rediscover Martinsville, Inc., permission to reproduce any work submitted for this Downtown Martinsville Public Art Initiative, Phase 1, for archival, promotional, educational, fundraising and other purposes. Submitting an entry to this competition shall constitute the agreement with all conditions in this Request for Proposals.

2. FINAL ART PRODUCTS:

All final, fully executed artwork regardless of medium will be digitally printed on vinyl that will be affixed to aluminum or aluminum composite signboard panels. In the case of the traffic signal boxes, the panels

will then be affixed to the stainless steel boxes. This process was selected for several reasons, not the least of which is that it allows artists working in 2D, 3D, digital, traditional, or mixed media to participate.

3. DEADLINE:

Submissions of comprehensive designs are due by 5:00 p.m. on Friday, November 18, 2016.

Electronic submissions are to be uploaded to a Dropbox file. At least 48 hours prior to the submission deadline—or no later than 5:00 p.m. on Wednesday, November 16—please email a request for file access to rediscovermartinsville@gmail.com.

Late submissions, incomplete submissions, or those that do not follow any one of the Design Criteria or Rules for Submission (see below) will NOT be considered.

4. PROJECT PURPOSE:

This project represents Phase 1 of a larger planned public art initiative expressing Martinsville's history, heritage, and identity. These four pieces will highlight the community's association with John Wooden, renowned educator, leader, mentor, and coach, who was born in the city in 1910. More specifically, the project will focus on Wooden's philosophies of personal and organizational development, leadership, and success. This project complements and supports the Martinsville school corporation's recent rededication of the former West Middle school at Main and Garfield Street as John R. Wooden Intermediate School and the Martinsville Lion's Club's plans to erect a monument in honor of Wooden on the school property.

To learn more about John Wooden, see:

- *My Personal Best: Life Lessons from an All-American Journey* by John Wooden with Steve Jamison. (2004)
- [www.http://coachwooden.com](http://coachwooden.com)

5. PROJECT OBJECTIVES:

The objectives of Rediscover Martinsville's Wisdom of John Wooden Public Art Initiative include:

- Educate residents and visitors about Martinsville's unique heritage and history
- Encourage community engagement
- Nurture a stronger sense of place
- Foster and promote an easily recognizable, inspirational, and promotable community identity
- Catalyze planning for future cultural and economic development

6. DESIGN CRITERIA:

Traffic Signal Boxes at Main and Jackson Street and Main and Garfield Street:

1. The design for each box must incorporate at least one (1) quote from John Wooden selected from a site-specific list provided by Rediscover Martinsville. See Exhibits E and F. The quotes should be legible by both pedestrians and drivers of vehicles.
2. Designs must be the original work of the entrant(s). Preference will be given to designs that do not rely heavily on published historic photographs and other images of John Wooden.
3. All designs must be created to the proportionate scale of the traffic box. When the digital design is enlarged for the final printed graphic, the image shall fit the outer limits of the traffic box face without the printer having to crop or distort the image to fit.
4. Dimensions, details, and photos of each traffic signal box, along with contextual information about each site can be found in Exhibits A and B. Artists are encouraged to visit the boxes in order to gain a better understanding of their features and their relationship to adjacent and nearby buildings having strong associations with Wooden.
5. The east hinged panel of each box includes a lower vented area, a handle, and a small upper hinged door. The design will incorporate these features, which must remain operable.
6. The four side panels of each box must be utilized by the artist(s). The panels can work together to present a single image, or each panel may be an individual work.
7. The top, skyward facing panel will not be used by the artists(s). Likewise, the rims of the top panel will not be used by the artists(s); these are reserved for project sponsor logos.

Corner Marker Panels, Island at Main and Morton Avenue:

1. All designs must be to the proportionate scale of the traffic box. When the digital design is enlarged for the final printed graphic, the image shall fit the outer limits of the corner marker panel without the printer having to crop or distort the image to fit.
2. Dimensions, photos, and contextual information for each panel can be found in Exhibits C and D. Artists are encouraged to visit the marker in order to gain a better understanding of its features and relationship to nearby buildings and sites having strong associations with Wooden.
3. The design for each panel will not incorporate a John Wooden quote but shall be inspired by a quote or quotes provided by Rediscover Martinsville. See Exhibits E and F.

7. RULES FOR SUBMISSION:

1. Each submission must be accompanied by a completed and signed Application Form.
2. Designs should sufficiently convey artistic intent in the form of, for example, design renderings, preferred colors, texture, font, and any other visual materials to adequately illustrate the proposed final artwork and the artist's abilities.
3. Submissions of designs must be digital in JPEG format. Minimum size of 3 by 5 inches and minimum resolution of 300 DPI. Do not submit images embedded in a document. Maximum file size shall be 5M.
4. Name your submitted digital files—up to ten (10) total images of the comprehensive design—according to the following format: FirstLast_01.jpg, FirstLast_02.jpg, etc. (Example: Jane Smith_01.jpg).

5. Each submission must include a Project Description (not to exceed 300 words) of the artist's/artists' vision and how it meets the Project Objectives. Please submit this as a PDF combined with 6 and 7 as follows.
6. Each submission must include a Time Frame/Work Plan consisting of a brief outline of the steps involved in the proposed project with time requirements included.
7. Each submission must include an Artist Biography or resume (not to exceed 1 page). Provide any information on previously related experience. Artists working collaboratively must submit a resume or other background information for each team member.
8. Each submission must include a Sample Work Portfolio. Please submit a link to your website or up to 10 digital JPEG images. 300 DPI. Maximum file size 5M.

8. EVALUATION CRITERIA:

Design sketches will be evaluated on how well they meet the requirements of this RFP. Major criteria to be considered in the evaluation may include, but shall not necessarily be limited to, the following items:

1. Complete submission received by the application deadline.
2. Artwork submitted represent the artist(s) own original creative work.
3. Samples of the artist's work reflect artistic excellence, innovation, originality, quality of craftsmanship, processes, and presentation.
4. How the artist's vision as described is appropriate to the project.
5. How the artist's vision furthers the project objectives.

9. SELECTION PROCESS:

A committee representing various interests—tourism, marketing, community, etc.—will oversee the selection process as follows:

1. Submissions will be checked to see if they are timely and complete.
2. Comprehensive design sketches will be evaluated by committee and a short list created.
3. Short list artists will be interviewed by committee.
4. Committee will recommend design selections to Rediscover Martinsville Board of Directors
5. Board of Directors will make recommendation to and secure approval from City of Martinsville

10. PROJECT TIMELINE:

- RFP issued September 23, 2016 (Friday)
- RFP deadline November 18, 2016 (Friday, 5:00 p.m.)
- Submissions checked to see if they are complete (beginning November 19)
- Committee members evaluate submissions (week of December 5)
- Committee members meet to develop short list (December 12)
- Short list artist interviews (weeks of January 2 and January 9, 2017)
- Committee meets to make selection recommendations to Rediscover Martinsville Board of Directors (week of January 16, 2017)
- Rediscover Martinsville Board of Directors meets to vote (week of January 23, 2017)
- Winning artists are notified (January 24, 2017)

- Secure approval from Martinsville Board of Public Works (Monday, February 6) and Martinsville Plan Commission (Tuesday, February 28)
- Artists are free to begin work on final, fully executed artwork (Wednesday, March 1, 2017)
- Artists complete final artwork as necessary (Friday, April 7, 2017)
- Fabrication and installation (April 10-May 5)
- Rediscover Martinsville Annual Meeting/debut to public (Tuesday, May 9)

ALL QUESTIONS REGARDING THIS REQUEST FOR PROPOSALS SHALL BE DIRECTED TO:

Joanne Stuttgen, President, Rediscover Martinsville, Inc.

765-349-1537

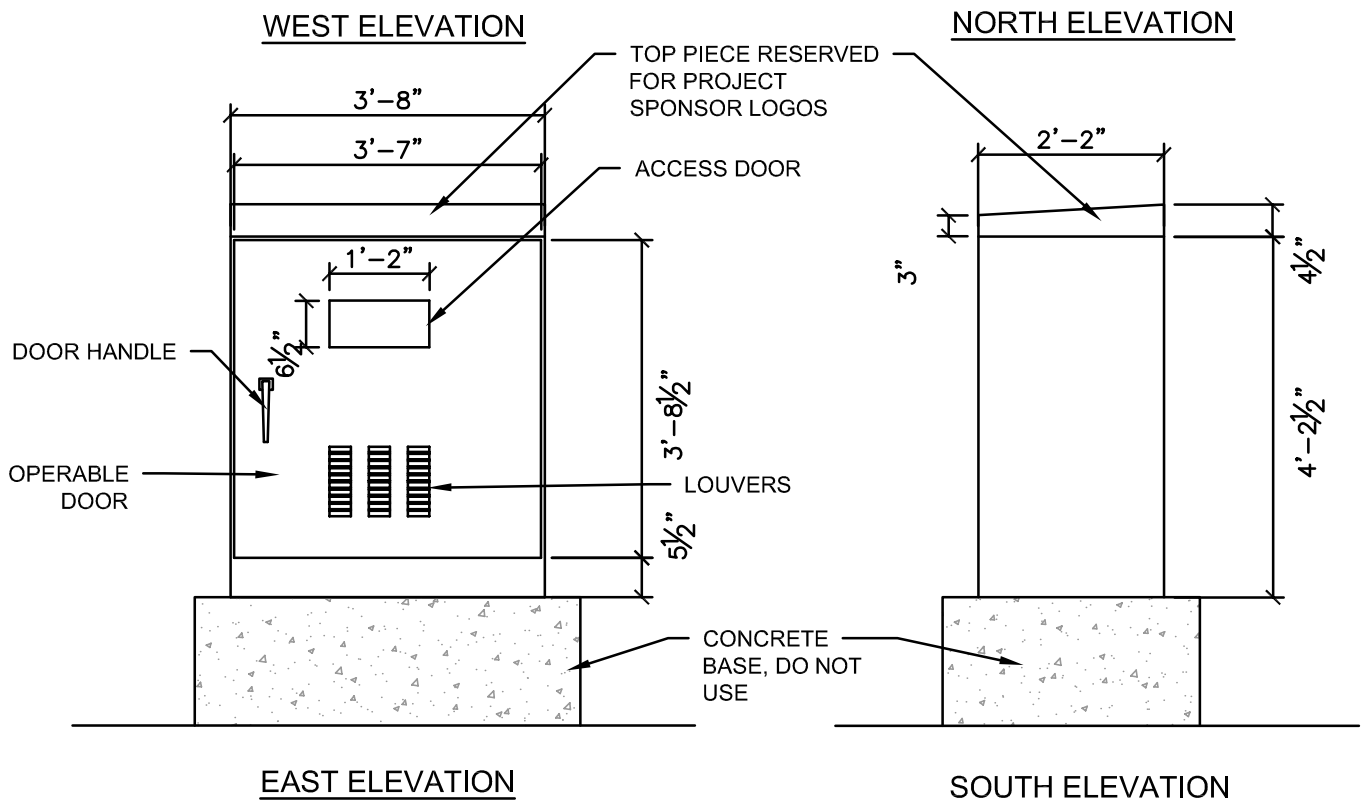
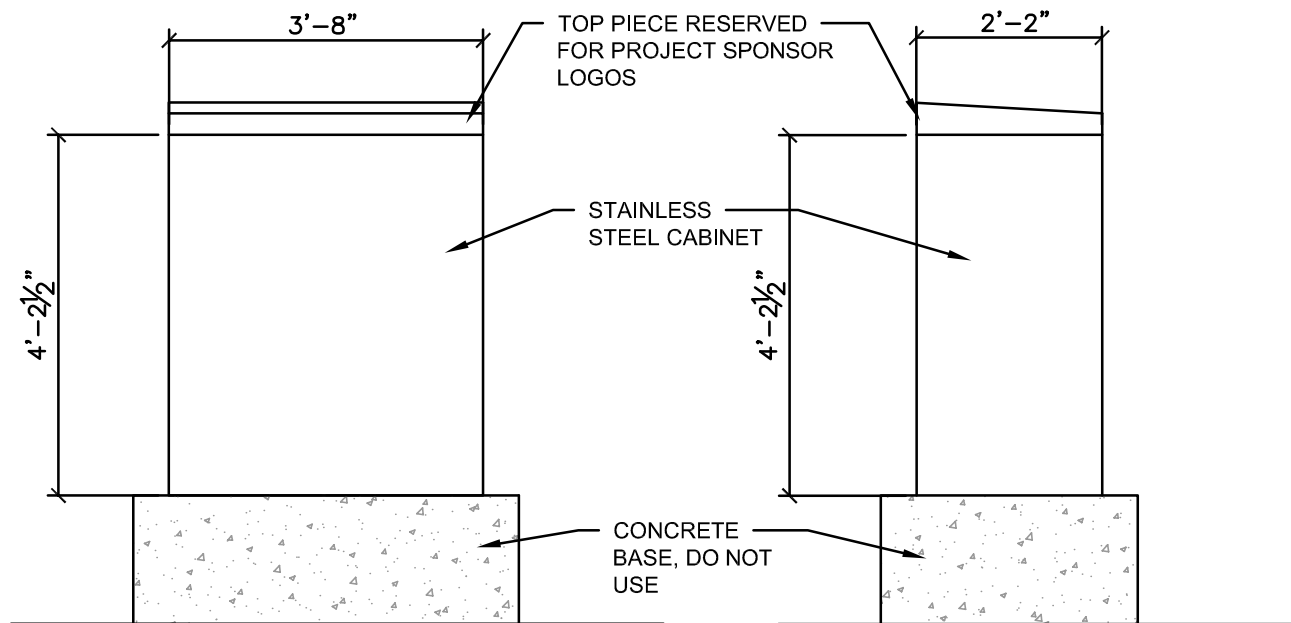
jstuttgen@comcast.net

Funding for Rediscover Martinsville's Wisdom of Wooden Public Art Initiative provided in part by



with support from





Wisdom of Wooden Public Art Initiative - Phase 1

Funding provided in part by:



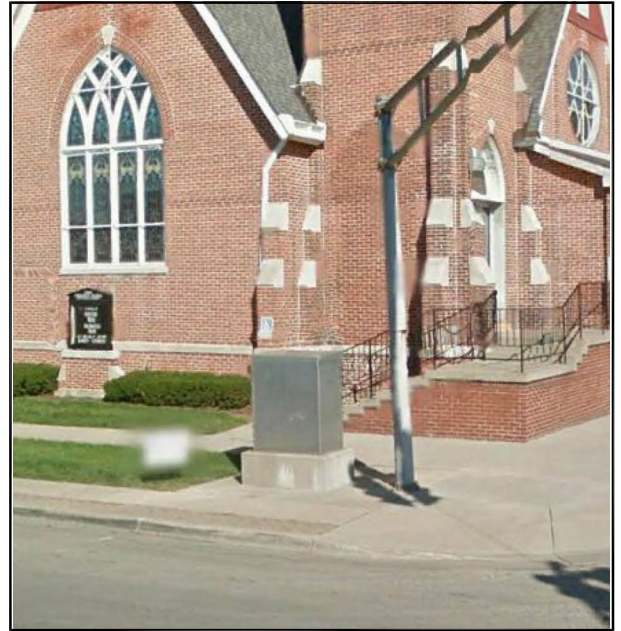
Sponsored by Rediscover Martinsville
Martinsville, Indiana

2016

EXHIBIT A

With support from:





The Wooden family attended the adjacent First Christian Church (Gothic Revival, built 1891). John's deep Christian faith was cultivated in the family and congregation. The church is located on Main Street within historic downtown Martinsville.

Site Location 1 - Northeast corner of Jackson and Main Street



Across Garfield Street is the site of the former Martinsville High School from which John Wooden was graduated in 1928 and the extent Martinsville High School Gymnasium (built 1924). Renamed Glenn Curtis Gymnasium after Wooden's high school coach, the gym is the historic landmark most closely associated with Wooden's life in Martinsville. Adjacent to the gym is the newly named John R. Wooden Intermediate School.

Site Location 2 - Northeast corner of Garfield and Main Street

Wisdom of Wooden Public Art Initiative - Phase 1

Funding provided in part by:



Sponsored by Rediscover Martinsville
Martinsville, Indiana
2016

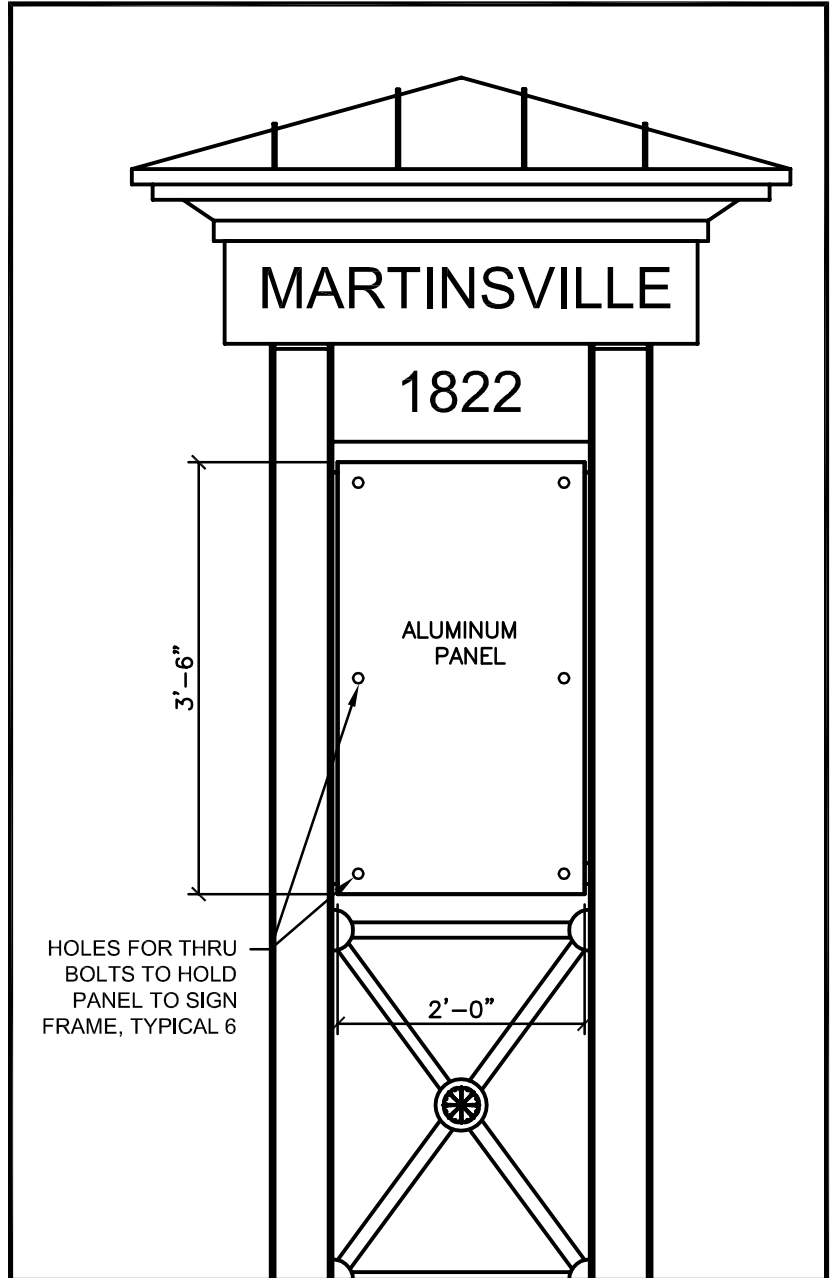
EXHIBIT B

With support from:





This new corner marker and gateway to historic Downtown Martinsville was completed in December 2015. A view of the panel looking north includes the traffic signal box at Main and Garfield Street, the historic Martinsville High School Gymnasium (1924) on the east, and a grassy field--the site of the former Martinsville High School. John Wooden attended the high school and played basketball in the gymnasium. Main Street continues north to downtown.



South Marker Panel - Main Street at Morton Avenue

Wisdom of Wooden Public Art Initiative - Phase 1

Funding provided in part by:

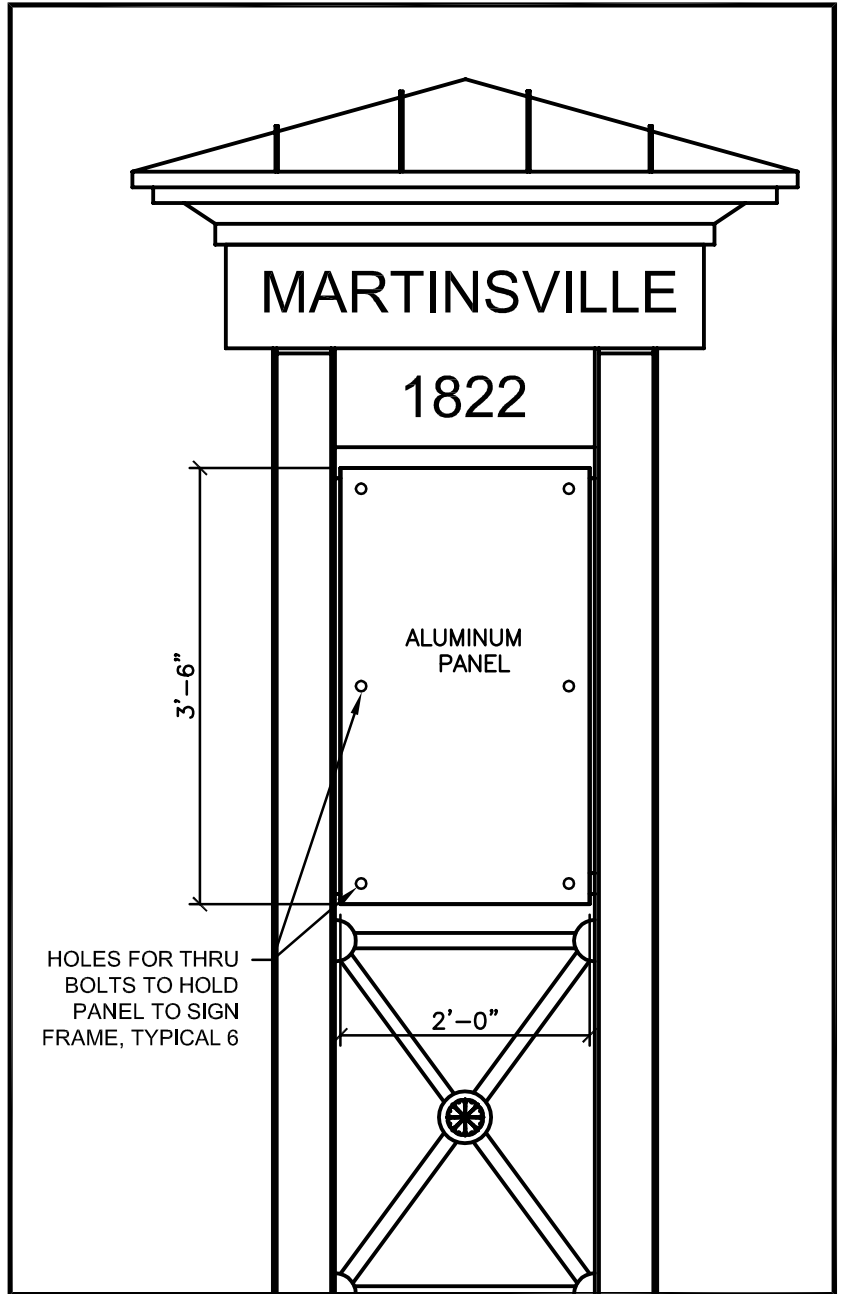


Sponsored by Rediscover Martinsville
Martinsville, Indiana
2016

EXHIBIT C

With support from:





North Marker Panel - Main Street at Morton Avenue

This new corner marker and gateway to historic Downtown Martinsville was completed in December 2015. A view of the panel looking south includes, on the east, the site of the former Martinsville High School and the historic Martinsville High School Gymnasium (1924). John Wooden attended the high school and played basketball in the gymnasium. Main Street continues south to the outskirts of Martinsville.

Wisdom of Wooden Public Art Initiative - Phase 1

Funding provided in part by:



Sponsored by Rediscover Martinsville
Martinsville, Indiana
2016

EXHIBIT D

With support from:



If I am through learning, I am through.

Discipline yourself, and others won't need to.

I'm glad I was a teacher.

If you're not making mistakes, then you're not doing anything.
I'm positive that a doer makes mistakes.

Nothing will work unless you do. (Attributed to Maya Angelou
and John Wooden)

It takes ten hands to score a basket.

Young people need models, not critics.

Never mistake activity for achievement.

Main and Garfield Street Quotations

Wisdom of Wooden Public Art Initiative - Phase 1

Funding provided in part by:

Sponsored by Rediscover Martinsville
Martinsville, Indiana
2016

EXHIBIT E



With support from:



I am just a common man who is true to his beliefs.

Love is the most important thing in the world. Hate, we should remove from the dictionary.

You can do more good by being good than any other way.

Talent is God given. Be humble. Fame is man-given. Be grateful. Conceit is self-given. Be careful.

Happiness begins where selfishness ends.

Main and Jackson Street Quotations

Wisdom of Wooden Public Art Initiative - Phase 1

Funding provided in part by:

Sponsored by Rediscover Martinsville
Martinsville, Indiana
2016

EXHIBIT F



With support from:

