

## Hotels and B&Bs

- A LUCKY EAGLE CASINO & HOTEL**  
12888 188th Ave SW  
Rochester, WA 98579  
(800) 720-1788  
LuckyEagle.com
- B PRAIRIE HOTEL**  
700 Prairie Park Ln  
Yelm, WA 98597  
(360) 458-8300  
PrairieHotel.com
- C SCATTER CREEK B&B**  
4531 Old Military Rd SE  
Tenino, WA 98589  
(360) 349-3635  
ScatterCreekBnB.com



# THURSTON BOUNTIFUL BYWAY

A guide for the exploration-hungry adventurer, bicycle enthusiast or culture seeker



## Craft Beer, Wine and Spirits

- 1 MADSEN FAMILY CELLARS**  
2825 Marvin Rd NE #D  
Lacey, WA 98516  
(360) 438-1286  
MadsenFamilyCellars.com  
Tasting room open  
Wed-Sun 11 a.m.-5 p.m.
- 2 MEDICINE CREEK WINERY**  
947 Old Pacific Hwy SE  
Olympia, WA 98513  
(360) 701-6284  
MedicineCreekWinery.com  
Typically open weekends  
from noon-5 p.m.  
Closed during the winter from  
Christmas to Valentine's Day
- 3 SALISH SEA ORGANIC LIQUEURS**  
2641 Willamette Dr NE Suite D  
Lacey, WA 98516  
(360) 890-4927  
SalishSeaOrganicLiqueurs.com  
Tasting room open  
Wed-Sun from noon-6 p.m.
- 4 SANDSTONE DISTILLERY**  
842 Wright Rd SE  
Tenino, WA 98589  
(360) 239-7272  
SandstoneDistillery.com  
Tasting room open  
Thurs-Mon from noon-5 p.m.
- 5 SCATTER CREEK WINERY**  
237 Sussex Ave W  
Tenino, WA 98589  
(360) 264-9463  
ScatterCreekWinery.com  
Tasting room open  
Mon-Sat from 1-6 p.m.  
Sunday from 1-6 p.m.
- 6 STOTTLE WINERY**  
2641 Willamette Dr NE, Suite E  
Lacey, WA 98516  
(360) 515-0356  
StottleWinery.com  
Tasting room open  
Wed-Sun from noon-5 p.m.
- 7 THREE MAGNETS BREWING**  
600 Franklin St SE, Suite 105  
Olympia, WA 98501  
(360) 972-2481  
ThreeMagnetsBrewing.com  
Tasting room open  
Fall-Spring open  
Sun-Thurs from 8 a.m.-10 p.m.  
Fri-Sat from 8 a.m.-midnight  
Summer open  
Sun-Thurs from 8 a.m.-11 p.m.  
Fri-Sat from 8 a.m.-1 a.m.
- 8 TOP RUNG BREWING**  
8343 Hogum Bay Lane NE, Suite E  
Lacey, WA 98516  
(360) 915-8766  
TopRungBrewing.com  
Tasting Room open  
Wed-Fri from 3 p.m.-9 p.m.  
Sat from noon-9 p.m.  
Sun from noon-5 p.m.



## Farms and Farmers Markets

- 9 COLVIN RANCH**  
16816 Old Hwy 99 SE  
Tenino, WA 98589  
(360) 264-2890  
ColvinRanch.com  
Open by appointment
- 10 EVERGREEN VALLEY LAVENDER FARM**  
9733 Evergreen Valley Rd SE  
Olympia, WA 98513  
(360) 754-2002  
EvergreenValleyLavender.com  
Open mid-June through early Aug  
Thurs-Sun from 10 a.m.-4 p.m.  
Farm and Gift Shoppe open by  
appointment Sept-May
- 11 HELSING JUNCTION FARMS**  
12013 Independence Rd SW  
Rochester, WA 98579  
(360) 273-2033  
HelsingFarmCSA.com  
June-Oct  
Mon-Sun from 8 a.m.-5 p.m.
- 12 HUNTER FAMILY FARM**  
7401 Yelm Hwy SE  
Olympia, WA 98513  
(360) 456-0466  
HunterFamilyFarm.com  
Aug-Sept from  
9 a.m.-6 p.m., daily  
Oct, 9 a.m.-6 p.m., daily  
Open Friday after Thanksgiving  
through Dec. 31  
Mon-Fri from 10 a.m.-6 p.m.  
Sat-Sun from 9 a.m.-6 p.m.
- 13 LATTIN'S COUNTRY CIDER MILL & FARM**  
9402 Rich Rd SE  
Olympia, WA 98501  
(360) 491-7328  
LatfinsCider.com  
Open on Sundays June- Dec from  
9 a.m.-4 p.m.  
Open Mon-Sat from  
9 a.m.-5:30 p.m.
- 14 NELSON RANCH**  
3624 Waldrick Rd SE  
Olympia, WA 98501  
(360) 352-4142  
NelsonRanch.com  
Open by appointment  
Check website for farm events
- 15 OLYMPIA FARMERS MARKET**  
700 N Capitol Way N  
Olympia, WA 98501  
(360) 352-9096  
OlympiaFarmersMarket.com  
Jan-March, open Saturdays  
April-Oct, Thurs-Sun from  
10 a.m.-3 p.m.  
Nov-Dec, Sat-Sun 10 a.m.-3 p.m.
- 16 RUTLEDGE CORN MAZE LLC**  
302 93rd Ave SE  
Olympia, WA 98501  
(360) 357-3700  
RutledgeCornMaze.com  
Aug-Sept from 10 a.m.-7 p.m. daily  
October, Sun-Thurs from  
10 a.m.-6 p.m.,  
Fri-Sat from 10 a.m.-12 a.m.
- 17 SCHILTER FAMILY FARM**  
141 Nisqually Cutoff Rd SE  
Olympia, WA, 98513  
(360) 459-4023  
SchilterFamilyFarm.com  
Farm stand open May-Sept  
Farm open Sept-Oct and the day  
after Thanksgiving-Dec. 20 from  
10 a.m.-6 p.m.
- 18 TENINO FARMERS MARKET**  
213 Sussex Ave W  
[Olympia St S]  
Tenino, WA 98589  
(360) 736-8070  
TeninoFarmersMarket.org  
May-Sept, open Saturdays  
from 10 a.m.-3 p.m.
- 19 YELM FARMERS MARKET**  
17835 State Route 507 SE  
Yelm, WA 98597  
YelmFarmersMarket.com  
Open mid-May through mid-Oct  
from 10 a.m.-3 p.m.



## More to Explore

- 20 GATE CITY SCHOOLHOUSE**  
16925 Moon Rd SW  
Rochester, WA 98579  
(360) 273-0707  
Open by appointment
- 21 LADY OF THE LAKE AT OFFUT LAKE RESORT**  
4005 120th Ave SE  
Tenino, WA 98589  
(360) 264-2438  
OffutLakeResort.com  
Open year-round from  
4 p.m.-dusk, daily
- 22 LAEL'S MOON GARDEN NURSERY**  
17813 Moon Rd SW  
Rochester, WA 98579  
LaelMoonGarden.com  
March-Oct open  
Thurs-Mon from 10 a.m.-6 p.m.  
Nov-Dec and Feb open  
Sat-Sun from 10 a.m.-5 p.m.  
and by appointment
- 23 TENINO DEPOT MUSEUM**  
399 W. Park Ave  
Tenino, WA 98589  
ci.Tenino.wa.us/  
Train-Depot-Museum  
Sat-Sun from noon-4 p.m.
- 24 TENINO QUARRY POOL**  
399 W. Park Ave  
Tenino, WA 98589  
ci.Tenino.wa.us/  
Quarry-Pool  
July-Aug open Thurs-Sun  
from noon-6 p.m.  
Pool may be closed on days with inclement weather
- 25 WOLF HAVEN INTERNATIONAL**  
3111 Offut Lake Rd SE  
Tenino, WA 98589  
(360) 264-4695  
WolfHaven.org  
Open by appointment  
Reserve through website  
Spring-Summer open Fri-Mon  
Fall-Winter open Sat-Sun







Rural and Tribal Transportation Council website ([trpc.org](http://trpc.org)) or by phone (800) 650-7846

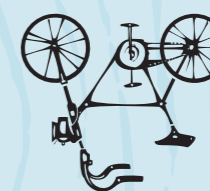


Tenino Yellow Bicycle Project  
213 Sussex Ave W  
Tenino, WA 98589  
(360) 280-5421  
Open seasonally May-Sept  
Wed-Sun from 11 a.m.-5 p.m.



## 2. FREE BICYCLE RENTALS:

For bike routes and information visit [ThurstonBikeMap.org](http://ThurstonBikeMap.org)  
Velim-Tenino Trail or the Chehalis Western Trail  
Bikes can also access the Byway via the  
Accessible from the Nisqually Valley Exit 114  
or from US-101 via the Mud Bay Exit



## 1. CAR OR BIKE:

Ways to explore the wide open spaces and meet farmers on the Byway:

## OR PUBLIC TRANSPORTATION WINDS DOWN, ON TWO WHEELS

### WHERE TO STOP ALONG THE WAY

Complete list of dates on other side

Open by	Food Available	U-Pick	Shop	Onsite	Produced only	Visit by	Year
Year							1 Madsen Family Ciders
Year							2 Medicine Creek Winery
Round							3 Drakish Sea Organic Liquors
Year							4 Sandstone Distillery
Year							5 Scatter Creek Winery
Year							6 Stolle Winery
Year							7 Three Magnets Winery
Year							8 Top Run Brewing
Year							9 Colvin Ranch
Round**							10 Evergreen Valley Lavender Farm
June-Aug.							11 Helms Junction Farm
Oct.							12 Hunter Family Farm
Nov-Dec.							13 Larkin's Country Cider Mill & Farm
Year							14 Nelson Ranch
Year							15 Olympia Farmers Market
Year							16 Burdige Corn Maze
May-Sept							

### WHERE TO STOP ALONG THE WAY

Complete list of dates on other side

Open by	Food Available	U-Pick	Shop	Onsite	Produced only	Visit by	Year
Year							17 Scatter Family Farm
Year							18 Tenino Farmers Market
May-Sept							19 Velim Farmers Market
Year							20 Gate City Schoolhouse
Year							21 Lady Of The Lake Off-Trail Resort
Year							22 Lael's Moon Garden Nursery
Feb-Dec.							23 Tenino Depot Museum
Year							24 Quarry Pool
Year							25 Wolf Haven International
Round**							

## TAKE A WALK—OR RIDE—ON THE NATURE SIDE

Explore walking and biking trails, natural phenomena and historical landmarks.  
Capitol State Forest is a forested, 100,000-acre playground for hikers, birders and biking enthusiasts.  
McLane Creek Nature Trail is a 1.1 mile nature trail with views of ponds and wildlife. (access off Delphi Road)  
Mima Mounds are mysterious mound formations. Visit the interpretive center to learn the theories and walk the trails. (access off Waddell Creek Road)  
Millerylvania State Park features 3,300 feet of freshwater shoreline on Deep Lake. The park is woven with trails and campsites are available. (12245 Tilley Road South)  
The Chehalis Western Trail follows the historical route of the Chehalis Western Railroad and intersects the Thurston Bountiful Byway between Rainier and Tenino. (access off Woodard Bay Road or Highway 507)  
The Velim-Tenino Trail follows the historical route of the railroad and parallels the Thurston Bountiful Byway for a total of 13.5 miles. The trail intersects the Chehalis Western Trail.  
Trail access points:  
• Velim trailhead is located behind the Velim City Hall (105 W Velim Avenue)  
• Rainier trailhead is located behind Rainier Market (between Center Street and Minnesota Street)  
• Tenino trailhead is located at the Tenino City Park (Washington Avenue)  
Billy Frank Jr. Nisqually National Wildlife Refuge is an estuary that supports a variety of sea and wildlife. Trails and boardwalks are perfect for a nature walk. (100 Brown Farm Road NE)

# CALLING ALL CRAFT CONNOISSEURS, LOCAL PRODUCE GROUPIES AND FARMERS MARKET FANATICS

*Hungry for farm-fresh fare?*

The Thurston Bountiful Byway is for those eager for an authentic cultural and culinary experience.

An ideal bike ride or weekend adventure—the 60-mile scenic Byway offers a bounty of experiences.



Craft Beer, Wine and Spirits



Farms and Farmers Markets



More to Explore



Hotels and B&Bs



## THURSTON BOUNTIFUL BYWAY

Visitor Information Center  
103 Sid Snyder Ave SW  
Olympia, WA 98501

Toll Free (877) 704-7500

Hours:  
Mon-Fri 9 a.m.–5 p.m.  
Sat-Sun 9 a.m.–3 p.m.  
Excluding Holidays



[Co.Thurston.wa.us](http://Co.Thurston.wa.us)



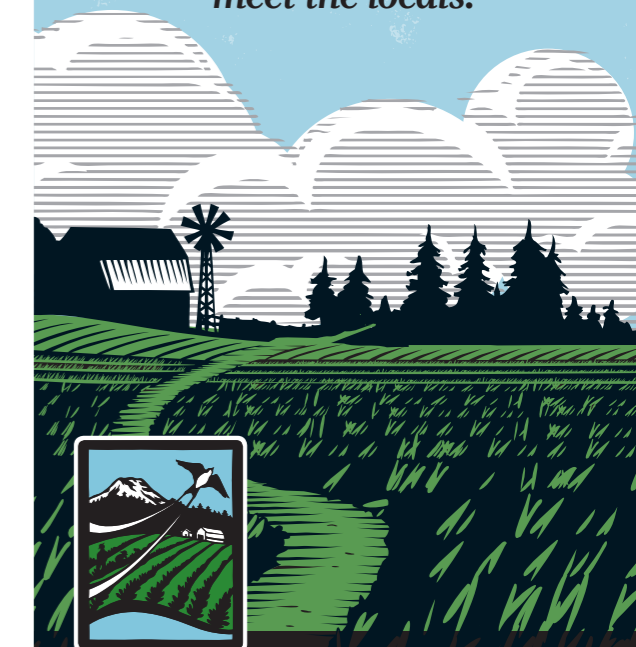
[ExperienceOlympia.com](http://ExperienceOlympia.com)

[ThurstonBountifulByway.com](http://ThurstonBountifulByway.com)

[facebook@ThurstonBountifulByway](https://www.facebook.com/ThurstonBountifulByway)

# Map & Self-Guided Tour THURSTON BOUNTIFUL BYWAY

*Tour the farms,  
taste the bounty,  
meet the locals.*



A scenic adventure