

## 2015-16 PARK CITY, UTAH WINTER PRESS GUIDE

### THERE IS JUST AS MUCH MAGIC OFF THE MOUNTAIN

Can one town really have it all? Two world-class ski resorts, award-winning dining and a vibrant nightlife, all within one ski-in/ski-out town? Surrounded by a laid-back charm that makes you feel at home? Sure. If you're in Park City, Utah. Here, the Greatest Snow on Earth® is just the beginning.

## WELCOME TO PARK CITY AND OUR WINTER 2015-16 PRESS PREVIEW!

This season will be historic for Park City as two of our town's resorts have merged to form the largest ski area in United States. In November, Park City Mountain Resort will debut the resort this winter after connecting with neighboring Canyons Resort via the Quicksilver Gondola (which was completed this summer). Park City is also home to Deer Valley Resort, which is consistently rated as one of the top ski resorts in North America.

Together these two ski resorts have 59 lifts with 401 runs on 9326 skiable acres. Couple that with an authentic, historic town filled with an array of luxury experiences, award winning dining, and a vibrant nightlife and you'll find a flurry of story ideas among the following pages. In addition, several high resolution images and video are available for your editorial use in our [Media Gallery](#). And to whet your appetite for winter, check out our sneak peak to the upcoming season [HERE](#).

As always, should you have any special requests, or if you're looking to connect with a source for an interview, please feel free to give us a call or drop us a line. We look forward to helping you share Park City's story.



### Online Press Room

Linda Jager

Director of Communications

[linda@visitparkcity.com](mailto:linda@visitparkcity.com)

O: 435-658-9609

C: 435-659-8198

Christiaan Boer

Communications Manager

[christiaan@visitparkcity.com](mailto:christiaan@visitparkcity.com)

O: 435-658-9602

C: 435-659-1825

## DISCOVER PARK CITY, UTAH

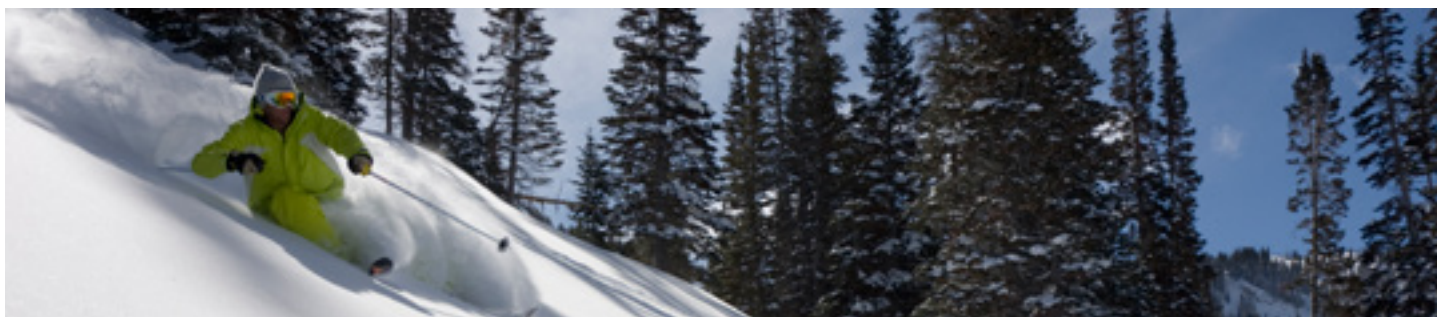
Park City is home to two world-class ski resorts filled with famously light Utah powder. But beyond the Greatest Snow on Earth®, Park City is so much more than your typical ski town. With award-winning dining, incredible shopping, and vibrant nightlife, Park City has plenty to offer in its friendly and accessible setting (we're only 35 minutes from the Salt Lake City International Airport). Come discover everything you never knew you were missing in Park City.



## DEER VALLEY RESORT

Deer Valley Resort revolutionized the ski industry 35 years ago by being the first North American ski resort to provide the firstclass service that guests would receive at a five-star hotel. Deer Valley® features luxurious amenities such as uniformed ski valets, complimentary tours from Mountain Hosts, overnight ski storage, parking lot shuttles, groomed-to-perfection slopes, limited lift ticket sales and gourmet dining in three elegant day lodges.

With award-winning lodging, convenient access via interstate highways, an on-site, state-licensed childcare facility, and the bounty of 300 annual inches of powder snow backed up by state-of-the-art snowmaking, we offer guests a complete vacation experience. Deer Valley Resort is consistently ranked #1 in the categories of guest service, on-mountain food and mountain grooming by the readers of SKI magazine.



Scheduled Season:	December 5, 2015 to April 10, 2016 (conditions permitting)
Hours of operation:	9:00 am to 4:15 pm
Ticket Rate:	Please visit <a href="http://deervalley.com">deervalley.com</a> for daily and multi-day rates.
Trails & Terrain:	2,026 acres spread over 6 mountains, 6 bowls and 101 trails: Easier 27%; More Difficult 41%; Most Difficult 32%.
Longest run:	2.8 miles.
Lifts:	21 lifts: 1 high-speed gondola, 12 high-speed quads, 1 fixed-grip quad, 5 triples and 2 doubles.
Vertical Rise:	3,000 feet (914 meters)

### Media Contacts:

#### Emily Summers

Sr. Communications Manager  
[esummers@deervalley.com](mailto:esummers@deervalley.com)  
435-645-6518

#### Lara Brucker

Sr. Communications Coordinator  
[lbrucker@deervalley.com](mailto:lbrucker@deervalley.com)  
435-645-6518

[Online Press Room](#)

## PARK CITY MOUNTAIN RESORT

Located just 35 minutes from Salt Lake City International Airport, Park City Mountain is a world-class mountain destination providing over 7,300 skiable acres of diverse terrain suited for every skier and rider. Only minutes away from Historic Main Street, Park City's two distinct base areas bustle with year-round activities, thrilling family adventures, nine hotels, and more than two dozen restaurants.



This past summer, Park City underwent a \$50 million resort improvement project linking with neighbor Canyons Resort to create the largest ski resort in the United States. This season, Park City will debut two new lifts and the new Quicksilver Gondola, which will provide dramatically increased uphill capacity and improved access to the mountain. In addition to these upgrades, Park City will also introduce multiple restaurant upgrades, an all new Miners Camp restaurant and enhanced snowmaking capabilities.



Scheduled Season:	November 21, 2015 to April 10, 2016 (conditions permitting)
Hours of operation:	9:00 am to 4:00 pm
Ticket Rate:	Please visit <a href="http://parkcitymountain.com">parkcitymountain.com</a> for daily, multi-day rates, and season pass tickets
Trails & Terrain:	7,300 skiable acres spread over 17 peaks, 14 bowls and 300+ trails, 8 terrain parks and 1 superpipe. Beginner: 12%; Intermediate 47%; Expert 41%.
Lifts:	19 lifts, including the new Quicksilver Gondola and upgraded Motherlode and King Con lifts.
Vertical Rise:	3,200 feet (975 meters)

### Media Contacts:

#### Margo Van Ness

Sr. Manager of Communications  
[mkvanness@vailresorts.com](mailto:mkvanness@vailresorts.com)  
435-615-3308

#### Jessica Miller

Sr. Communications Specialist  
[jmiller@vailresorts.com](mailto:jmiller@vailresorts.com)  
435-615-4843

[Online Press Room](#)

## UTAH OLYMPIC PARK

Visit Utah Olympic Park and experience Utah's Olympic legacy! Guided tours of the 2002 Olympic Winter Games venue are available daily.



Explore the George Eccles 2002 Olympic Games Museum and interactive Alf Engen Ski Museum to learn about the history of skiing in Utah, and to relive the Salt Lake 2002 Olympic Winter Games.

The Park is a year-round U.S. Olympic training site and active with athletes of all ages training for Nordic Ski Jumping, Freestyle Skiing, Bobsled, Skeleton, and Luge.

Guests can take the ride of a lifetime on the Winter Comet Bobsled and experience what it is like to go down the Olympic track.



Scheduled Season:	December 26, 2015 to April 1, 2016 (conditions permitting)
Hours of operation:	10:00 am to 6:00 pm
Ticket Rate:	Admission to the Park is free.
Activities:	Comet Bobsled, Drop Tower, Canyon Adventure Course, Summit Adventure Course, Extreme Tubing, Extreme Zipline, Scenic Chairlift Rides

### Media Contacts:

Melanie Welch  
Marketing Manager  
[mwelch@uolf.com](mailto:mwelch@uolf.com)  
435-658-4212

[Online Press Room](#)

## A MOST ACCOMMODATING RESORT

Amid the slopes, shops, and mountain landscapes, you'll find your own personal sanctuary. Park City offers more than 100 lodging properties, including large multi-family private homes, bed and breakfast inns, condominiums, and full-service hotels.



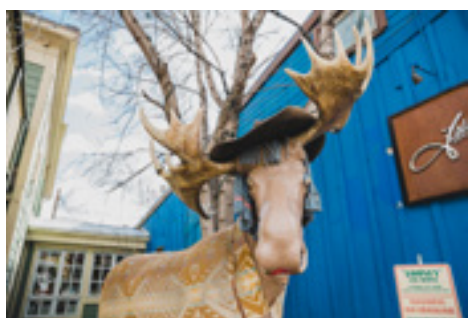
Here you will find the most luxurious ski-in/ski-out lodging brands in North America. Rest and relaxation has never been so enjoyable. Find a complete list of our lodging properties [HERE](#).



## ADVENTURES OFF THE MOUNTAINS

The internationally celebrated mountains of Park City also offer unparalleled snowshoeing and cross-country skiing opportunities. Aiming even higher? Hop in a hot air balloon for an exhilarating bird's-eye view of Park City's panorama.

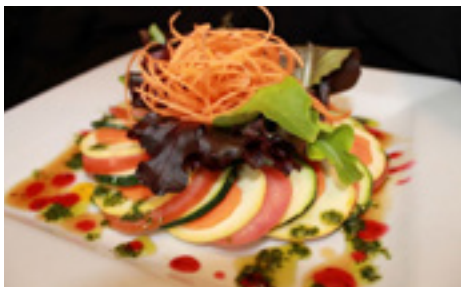
Prefer to slow things down? Take a tour of Park City's Historic District or a cozy ride in a horse-drawn sleigh. Park City's activities and outfitters have everything covered for thrills on and off the slopes. Or try something new. How about extreme tubing or Snow biking? Find a detailed list of off-mountain activities [HERE](#).



## A TOWN WITH A TASTE FOR AWARD WINNING DINING

Nearly 150 area restaurants greet visitors with flavors both familiar and intriguing. Our diverse range of dining establishments includes cozy bistros, family-friendly fare, and fine dining. Enjoy hand-crafted whiskeys at the world's first and only ski-in distillery or several mouth-watering courses at one of our many locally owned eating establishments.

Our chefs excel at culinary craftsmanship with locally-sourced ingredients combined with wine pairings selected by sommeliers — ensuring that visitor's sense of taste is not neglected during their visit. Find a complete list of Park City's restaurants [HERE](#).





## SPECIAL EVENTS ABOUND IN PARK CITY, UT

From holiday traditions to Olympic caliber competitions, there's just as much to do off the mountain in Park City. Check out just a few of the options below, or visit our [EVENTS CALENDAR](#) for an up-to-the-minute schedule of what to do in Park City.

---

## HOLIDAY HAPPENINGS IN PARK CITY

A highlight of winter, Historic Park City's month-long schedule of event festivities, will kick off with the annual [ELECTRIC LIGHT PARADE](#) on November 28. Please find a complete schedule of events [HERE](#).

On December 24, Santa will visit Deer Valley Resort, and the resort will continue a beloved tradition, the annual [TORCHLIGHT PARADE](#), which will take place on December 30, featuring synchronized skiing, along with complimentary hot cider and cookies.

Park City Mountain Resort will spread some holiday cheer in December, as [SANTA CLAUS](#) will arrive to Main Street on Park City's Town Lift on December 19. Kicking off December 24, come join festivities of the traditional Torchlight Parade and [CHRISTMAS EVE CELEBRATION](#) at the base area of the resort, followed by a [NEW YEAR'S EVE CELEBRATION](#) at Canyons Village.

During the holiday season, Montage Deer Valley is home to an exquisitely crafted life-size [GINGERBREAD HOUSE](#), sharing the secret recipe with all visitors.

Capping off the holiday season, the Park City Institute will ring in the New Year on December 31 with an intimate evening featuring Ann Wilson, best known as the lead singer for the sister rock band, Heart, at the [ECCLES CENTER](#).

---

## PARK CITY WELCOMES WORLD-CLASS WINTER SPORT COMPETITIONS IN 2015-16

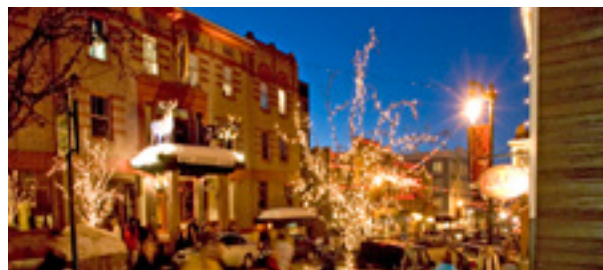
A legacy facility to the 2002 Olympic Winter Games, Utah Olympic Park continues to host internationally recognized winter sport competitions, drawing in athletes from around the world. On November 16-22, UOP will host the second season of the IBSF Para World Cup and the first IBSF World Championship. UOP will continue to host athletic events throughout the month of December, including the 2015 FIL Luge World Cup on December 7-12, and the FIS Nordic Continental Cup on December 11-13.

Welcoming athletes from over 20 countries to Utah, the IBSF Bobsled and Skeleton World Cup will take place on January 11-17. On February 1-7, Park City will host the 2016 Visa U.S. Freeskiing Grand Prix, while on February 3-6, the world's best freestyle skiers will gather on the slopes of Deer Valley for the 2016 FIS Freestyle World Cup. UOP's winter events wrap up in March with the IBSF Bobsled and Skeleton North America's Cup, which will feature top U.S. and Canadian athletes.

## NOT ALL ENTERTAINMENT IS ON THE MOUNTAIN

Park City has so much more to offer than just its slopes. Whether it is the [2016 Sundance Film Festival](#), [Park City Institute's](#) stellar concert lineup, intimate performances at the [Egyptian Theatre](#) or the local's favorite [Park City Film Series](#), there's always something happening in Park City. Check out our many concerts, film festivals, and other entertainment events [HERE](#).

Park City is also a town full of art galleries. On the last Friday of every month, the Park City Gallery Stroll offers a free community event that gives locals and Park City visitors alike the opportunity to enjoy light refreshments while exploring Park City's art galleries. From 6:00-9:00 pm on the last Friday of each month, members of the [Park City Gallery Association](#) offer a unique monthly showcase highlighting artists, special exhibits and art events.



## A FLURRY OF SHOPPING OPPORTUNITIES

Visitors can hit the Park City shops when the time comes (if ever) to take a break from the outdoor adventures that Park City Utah offers. We're talking shopping for everything from handmade furniture, books and sportswear to art collectibles and Western antiques.

[Historic Main Street](#) is lined with quaint shops and galleries that have great local flavor. For those looking for a brand-name bargain, Park City's [Tanger Outlet](#) mall is a must-shop spot. Please find a complete listing of Park City's shops and boutiques [HERE](#).

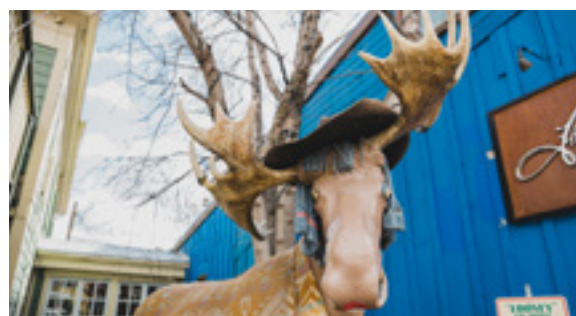
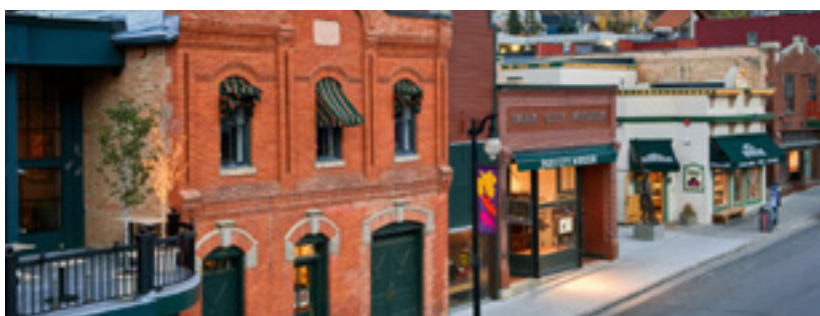


## FROM MINING SILVER TO MINING SNOW - PARK CITY IS STEEPED IN COLORFUL HISTORY

Park City, Utah was put on the world map as it helped host the 2002 Olympic Winter Games, deemed the most successful Winter Olympics ever. Hundreds of thousands of visitors from around the world filled the town during those 17 days to watch the world's best athletes compete for Olympic gold; yet more than 130 years ago, a rush of people flocked to Park City seeking a different precious metal - silver. Park City was incorporated as a city in 1884. The mountains' abundant silver veins attracted adventurers from around the world in the late 1860s. During its mining height, those mountains surrounding Park City yielded \$400 million in silver and created 23 millionaires, including the father of newspaper publisher William Randolph Hearst.

However, with mineral prices falling in the 1930s, the boom years ended and residents began "mining" the treasure on the mountains, discovering what would later be termed The Greatest Snow on Earth™. Today, Park City is a unique blend of the old and new. Sixty-four of Park City's buildings are listed on the National Register of Historic Places, many of which are located along Historic Main Street, and more than 1,200 miles of tunnels wind through the surrounding mountains, remnants of the mining era.

An interactive pictorial of Park City's colorful mining and ski history is on display at the newly renovated [Park City Museum](#), located at 528 Main Street in the heart of Park City's Historic Old Town district. Park City's Olympic Welcome Plaza, located at the junction of Highway 224 and Highway 248, pays tribute to both Park City's role in the 2002 Olympic Winter Games and the past 18 Winter Olympic host cities. The Joe Quinney Winter Sports Center at the [Utah Olympic Park](#) features films, interactive exhibits and museums and Olympic memorabilia that highlight Park City's long involvement in winter sports.



## EVERY MEETING COULD USE A FEW MOUNTAINS

Park City's alpine setting offers over 30 venues with 125,000 square feet of professional meeting space. From corporate retreats to weddings, conferences and reunions, groups will be surrounded by mountain vistas and exceptional service. Private group dining, group-friendly activities and easy access will make Park City your preferred meeting and group destination.



FIND OUT MORE [HERE](#).



## PARDON US WHILE WE BRAG A BIT...

The spotlight on Park City has been bright over the last several months, and the Park City community has received significant accolades from major media outlets and organizations. Congratulations to our members and community partners for the outstanding recognition!

## 2015 NATIONAL ACCOLADES

### TRAVEL+ LEISURE

- World's Best Hotels in the Continental US (with 40 rooms or more):
  - Stein Eriksen Lodge (#14)
- World's Best Family-Friendly Resorts:
  - Montage Deer Valley (#15)

### Forbes

- Best Ski Towns in America

### Sunset

Sunset Magazine

- Best Ski Destination in the U.S.



- Best Hotel Restaurants:
  - Stein Eriksen Lodge's Glitretind Restaurant (#4)
- Best General Food Festivals:
  - Park City Food & Wine Classic (#4)
- Best Celebrity-Owned Restaurants:
  - Robert Redford's Zoom (#6)
- Best Outdoor Music Venues:
  - Deer Valley's Snow Park Amphitheater (#10)

### Cooking Light

- Top 50 Farmer's Markets in the U.S.:
  - Park Silly Sunday Market



INTERNATIONAL MOUNTAIN  
BICYCLING ASSOCIATION

- Park City was once again named as an IMBA Gold-Level Ride Center



- World's Best Ski Hotel: Stein Eriksen Lodge
- United States' Best Ski Resort: Deer Valley Resort

### Condé Nast Traveler

#### 2015 Readers' Choice Awards

- Friendliest City in the U.S.
- Best Small Cities in the U.S. (#3)
- Top 100 Hotels in the World:
  - St. Regis Deer Valley (#27)
  - Stein Eriksen Lodge (#30)
  - Hotel Park City (#32)
  - Montage Deer Valley (#82)
- Top 15 Hotels in the West:
  - The Chateaux Deer Valley (#6)
- Top 25 Best Resorts in the U.S.:
  - St. Regis Deer Valley (#8)
  - Stein Eriksen Lodge (#10)
  - Hotel Park City (#12)
  - Montage Deer Valley (#25)
- Top 20 Resorts in the West:
  - St. Regis Deer Valley (#4)
  - Stein Eriksen Lodge (#5)
  - Hotel Park City (#6)
  - Montage Deer Valley (#7)
  - Hyatt Escala Lodge (#10)
  - Lodges at Deer Valley (#12)
  - Waldorf Astoria (#13)