



CHAMBER OF COMMERCE | CONVENTION & VISITORS BUREAU
CHAMBER OF COMMERCE | CONVENTION & VISITORS BUREAU

ECONOMIC PROFILE

City Fees & Taxes

PARK CITY & SUMMIT COUNTY, UTAH

Prepared by the Park City Chamber of Commerce & Visitors Bureau

PO Box 1630, Park City, UT 84060

1.800.453.1360

Park City

Water Services and Fees

CITY FEES & TAXES – Park City

WATER SYSTEMS AND FEES

The Park City Public Works Department operates and maintains one of the most complex water systems in the United States. It includes advanced water treatment and delivery for potable, irrigation and snowmaking purposes. Surface water management is a vital component in efforts to protect stream water quality. Park City also faces unique challenges resulting from historic mining activities and seeks to improve the environment by mitigating those impacts. The city’s award-winning water system utilizes two treatment plants, is serviced by 16 water storage reservoirs and maintains over 130 miles of water pipeline.

Significant improvements to the water infrastructure system have been constructed over the last 5-7 years and a number of new projects are in the works. The Quinn’s Junction Water Treatment Plant (QJWTP) started operations in early 2012. The facility houses a main treatment building containing all water treatment equipment and a 155,000-gallon reservoir. The QJWTP treats raw water imported from the Weber River at a rate of up to 3.0 mgd. The facility’s design includes provisions for future expansion to a capacity of 9.0 mgd and space for hydropower turbines.

Park City’s water sources include two tunnels, one spring and three wells, including the following along with their respective volumes: Judge Tunnel (600-900 gallons per minute), Spiro Tunnel (2,000 gpm), Thiriote Springs (400-1,000 gpm), Treasure Mountain Middle School Well (1,000 gpm) and Park Meadows Well (1,000 gpm). Two district wholesale sources account for the remainder of the City’s water.

For more information on the QJWPT, current projects, public utilities and water services visit the City’s website: www.parkcity.org.¹

CITY FEES & TAXES – Park City

Water Services

Water Services fees and rate information are located at : <http://www.parkcity.org/departments/public-utilities/customer-service/water-services>

START, STOP OR CHANGE SERVICE

All persons desiring water service are required to sign a [Water Service Agreement](#). A \$100 connection fee will be assessed for new service if the previous service has already been disconnected. This charge is due with the service agreement.

Who do I call if I think I have a leak?

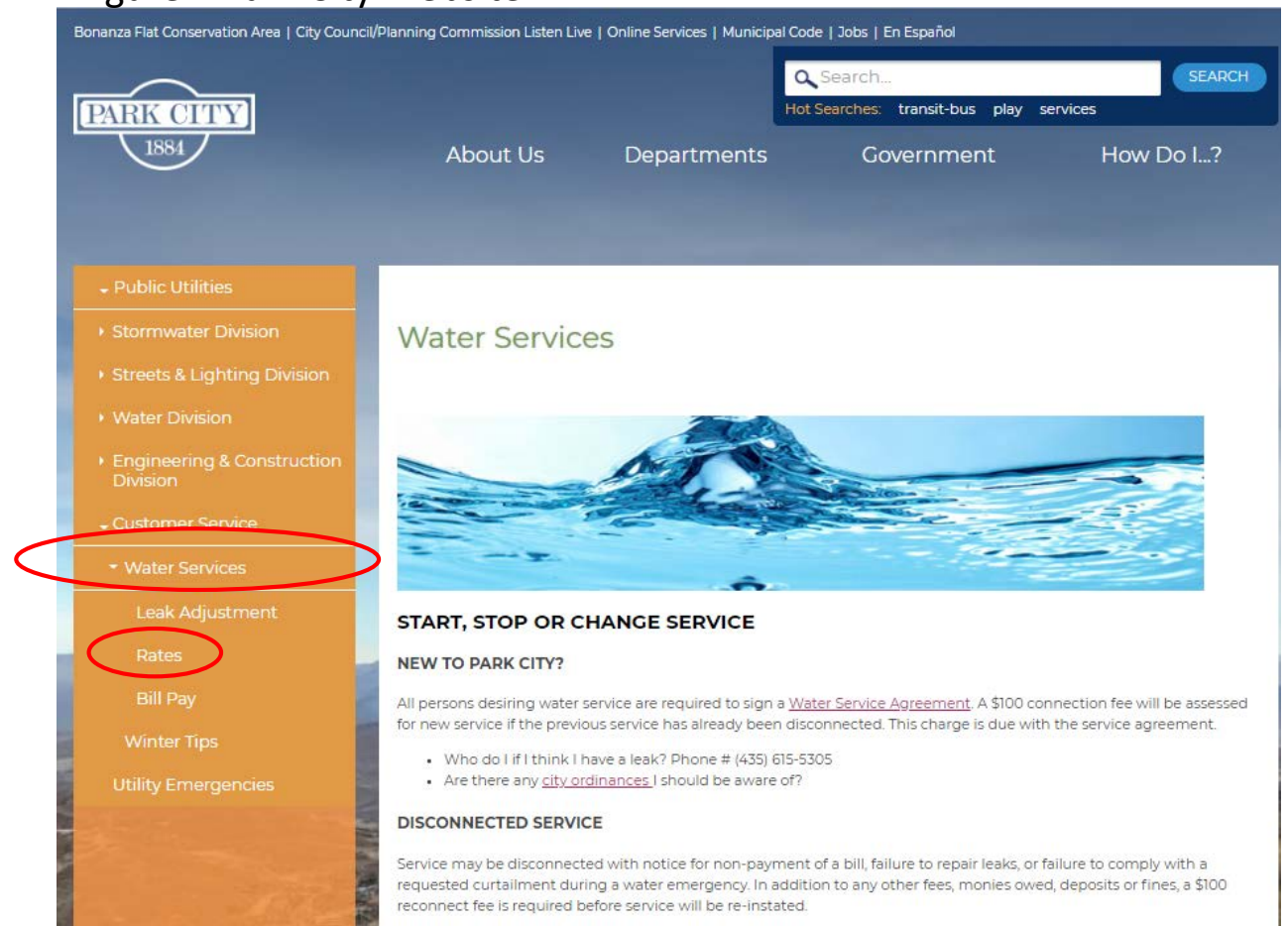
Phone # (435) 615-5305

Are there any [city ordinances](#) I should be aware of?

DISCONNECTED SERVICE

Service may be disconnected with notice for non-payment of a bill, failure to repair leaks, or failure to comply with a requested curtailment during a water emergency. In addition to any other fees, monies owed, deposits or fines, a \$100 reconnect fee is required before service will be re-instated. ²

Figure 1 Park City Website



Source <http://www.parkcity.org/departments/public-utilities/customer-service/water-services>

CITY FEES & TAXES – Park City

Figure 2 WATER CONSUMPTION RATES - FISCAL YEAR 2017

Water Base Rates

Individually Metered Residential (Single family, single condo/townhouse)

Meter Size	Monthly Base Rate/Demand Charge	Meter Price
5/8"x 3/4"	\$47.65	\$755.90
1"	\$64.32	\$868.78
1 1/2"	\$76.28	\$1,236.00

Multi-Family & Commercial

Meter Size	Monthly Base Rate/ Demand Charge	Meter Price
3/4"	\$61.95	\$755.90
1"	\$104.81	\$868.78
1 1/2"	\$223.89	\$1,236.00
2"	\$466.91	\$2,186.24
3"	\$1,215.15	\$2,586.34
4"	\$2,206.00	\$4,506.80
6"	\$4,158.40	\$7,011.68
8"	\$7,161.13	\$10,531.09

Irrigation

Meter Size	Base Rate/Demand Charge	Meter Price
3/4"	\$74.56	\$755.90
1"	\$126.17	\$868.78
1 1/2"	\$269.51	\$1,236.00
2"	\$562.04	\$2,186.24
3"	\$1,462.59	\$2,586.34
4"	\$2,655.52	\$4,506.80
6"	\$5,005.77	\$7,011.68

Construction Water

Monthly Base Rate - \$276.90	\$11.19/k- gal
---------------------------------	-------------------

Source : <http://www.parkcity.org/departments/public-utilities/customer-service/water-services/rates>

CITY FEES & TAXES – Park City

Figure 3 WATER CONSUMPTION RATES - FISCAL YEAR 2017- continued

All Customers Year Round Tier Consumption

Type	Block 1 - \$5.94/k-gal	Block 2 - \$9.52/k-gal	Block 3 - \$10.01/k-gal	Block 4 - \$12.97/k-gal	Block 5 - \$15.47/k-gal	Block 6 - \$27.03/k-gal
Single Family	0-5,000	5,001-15,000	15,001-25,000	25,001-35,000	35,001-55,000	Over 55,000

Mult-Family	Block 1 - \$7.03/k-gal	Block 2 - \$9.52/k-gal	Block 3 - \$15.47/k-gal	Block 4 - \$23.82/k-gal
3/4"	0-10,000	10,001-36,000	36,001-80,000	Over 80,000
1"	0-17,000	17,001-57,000	57,001-120,000	Over 120,000
1 1/2"	0-30,000	30,001-100,000	100,001-200,000	Over 200,000
2"	0-48,000	48,001-160,000	160,001-320,000	Over 320,000
3"	0-96,000	96,001-320,000	320,001-640,000	Over 640,000
4"	0-150,000	150,001-500,000	500,001-1,000,000	Over 1,000,000
6"	0-180,000	180,001-600,000	600,001-1,200,000	Over 1,200,000

Commercial	Block 1 - \$8.34/k-gal	Block 2 - \$12.92/k-gal
3/4"	0-150,000	Over 150,000
1"	0-300,000	Over 300,000
1 1/2"	0-500,000	Over 500,000
2"	0-750,000	Over 750,000
3"	0-1,200,000	Over 1,200,000
4"	0-1,700,000	Over 1,700,000
6"	0-1,700,000	Over 1,700,000

Irrigation	Block 1 - \$9.52/k-gal	Block 2 - \$15.47/k-gal
3/4"	0-56,000	Over 56,000
1"	0-90,000	Over 90,000
1 1/2"	0-185,000	Over 185,000
2"	0-300,000	Over 300,000
3"	0-600,000	Over 600,000
4"	0-935,000	Over 935,000
6"	0-1,865,000	Over 1,865,000

<http://www.parkcity.org/departments/public-utilities/customer-service/water-services/rates>

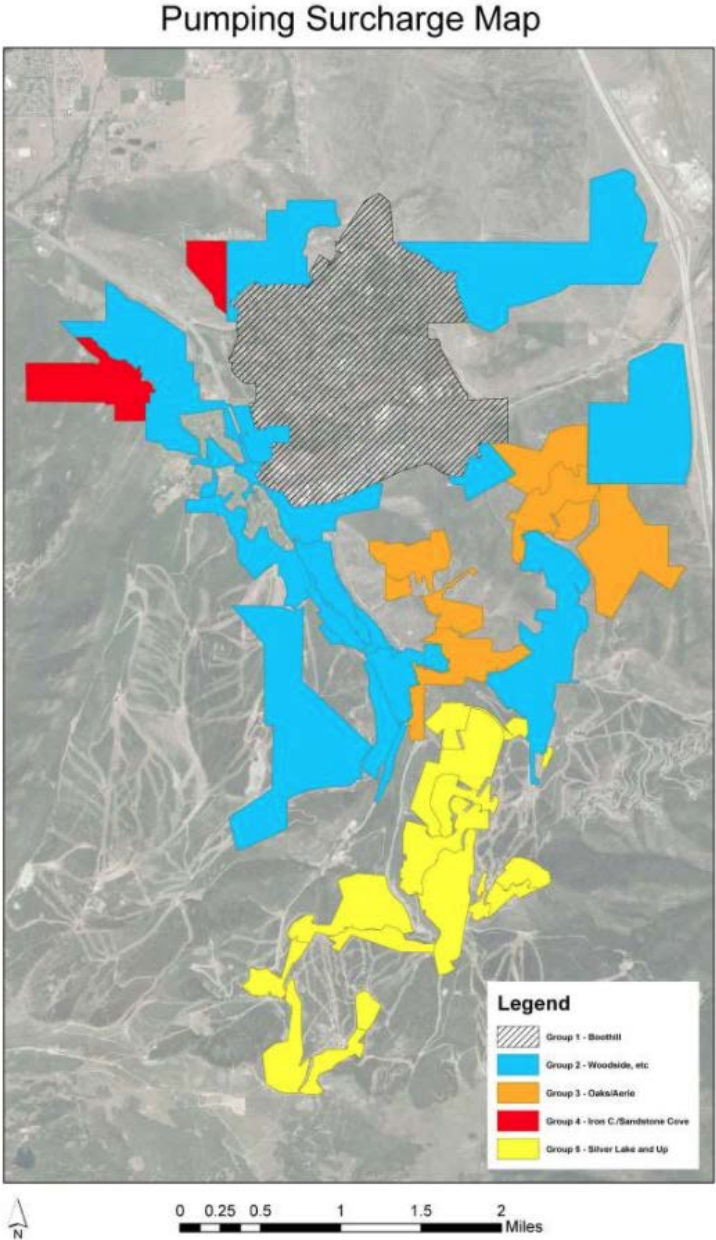
CITY FEES & TAXES – PARK CITY

Figure 4 Pumping Fees and Surcharge Group Map

Pumping Surcharge Fee

For all water billed on or after July 1, 2016

Surcharge Group No.	Surcharge Group	Pressure Zone Numbers Included in Group	Cost (\$/kgal)
1	Boothill	29	\$0.41
2	Woodside, etc.	8,10,17,18,19,20,21,22,23 24,25,26,27,42,48,49,30,32	\$1.13
3	Oaks / Aerie	11,12,13,14,15,16	\$2.03
4	Iron Canyon / Sandstone Cove	28,31	\$2.57
5	Silver Lake and Up	1,2,3,4,5,6,7,34,37,38,39 40,41	\$3.54



<http://www.parkcity.org/departments/public-utilities/customer-service/water-services/rates>

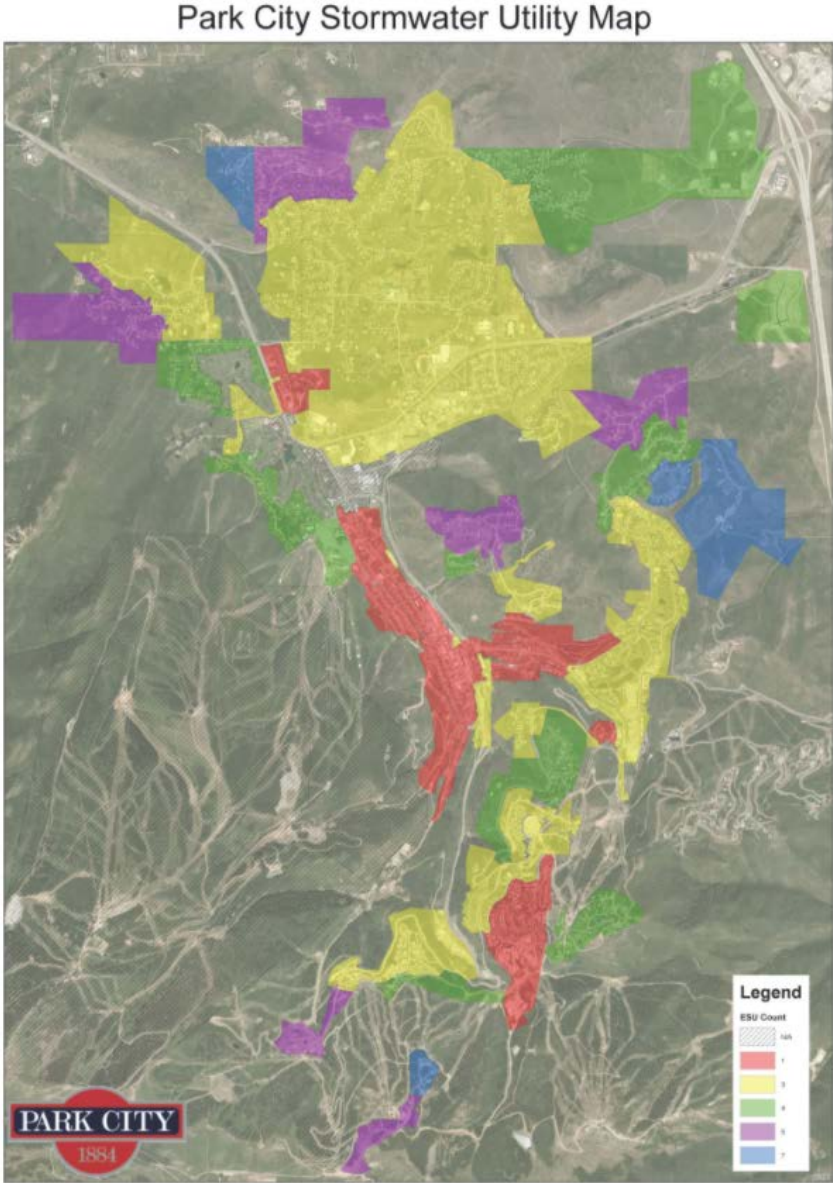
CITY FEES & TAXES – PARK CITY

Figure 5 Stormwater Fees and Zone Map

Stormwater Fee

For all water billed on or after August 1, 2016

ESU Count	Stormwater Zone	Fee (\$4.88 per ESU)
1	2,7,16,17,18,19,20,21,23,27	\$4.88
3	3,4,6,8,10,16,25,26,29,38	\$14.64
4	1,5,12,15,24,26,32,37,48	\$19.52
5	13,14,28,30,39,41	\$24.40
7	11,31,40,42	\$34.16
Multi-Family	\$4.88 Per Dwelling Unit	
Commercial	\$4.88 Per ESU	



Source: <http://www.parkcity.org/departments/public-utilities/customer-service/water-services/rates>

CITY FEES & TAXES – PARK CITY

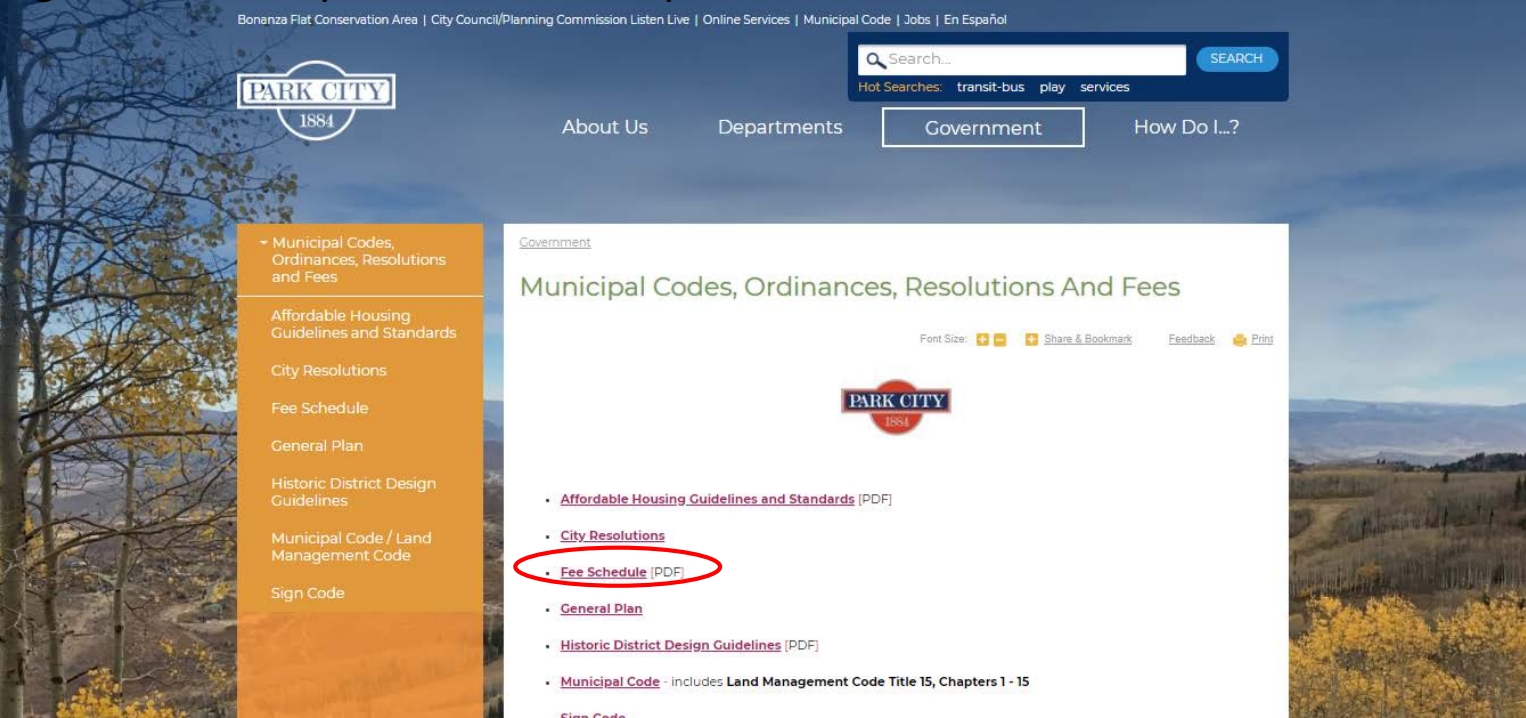
Park City Fee Schedule

A comprehensive list of fees is located on the Park City Website at , <http://www.parkcity.org/government/municipal-codes-ordinances-resolutions-and-fees>.

The fee schedule document contains detailed information and associated fees for the following:

- Construction And Development
- Utilities
- Special Meetings
- Business Licensing
- Law Enforcement
- Parking, Meter Rates, Violations, Towing and Impound
- Recreation and Facility Rentals
- Ice Arena and Field Rentals

Figure 6 Park City Website: municipal-codes-ordinances-resolutions-and-fees



Source: <http://www.parkcity.org/government/municipal-codes-ordinances-resolutions-and-fees>

Snyderville Basin

Water Fees

CITY FEES & TAXES – Snyderville Basin Sewer Systems

The Snyderville Basin Water Reclamation District (SBWRD) provides state-of-the-art wastewater collection and reclamation services for Park City and the surrounding area from their two treatment facilities, East Canyon and Silver Creek. Combined the facility has a treatment capacity of 6.0 million gallons per day, average about 3.5 mgd and can treat up to 12.0 mgd if necessary. ³

- The East Canyon Water Reclamation Facility, which processes most of the area’s sewage, has a maximum capacity of 4.0 mgd, treats wastewater from Park City, The Canyons, and western Snyderville Basin and returns the cleaned water to East Canyon Creek, which then flows into East Canyon Reservoir. It is currently the only facility in the state that removes phosphorus from wastewater. ⁴
- The Silver Creek Water Reclamation Facility (SCWRF), with a capacity of 2.0 million gallons/day, treats wastewater from Park City, Promontory, and eastern Snyderville Basin and returns the cleaned water to Silver Creek, which then flows into Echo Reservoir. ⁵
- Wastewater user fees are calculated based on a combination of a service charge and a volume charge. The service charge is a base fee that all users pay, regardless of the amount of water used. The volume charge is based on the average water used during the months of November through April. See Current Rate Resolution document for a more detailed description of fees. ⁶

Figure 7 Snyderville Basin Water Reclamation Website



The Snyderville Basin Water Reclamation District’s website, <https://www.sbwrd.org>, contains information for service area, billing,, residential, commercial and administrative fees. Helpful, concise information can be accessed here in the FAQs section concerning billing, maintenance, development projects, private lateral connections and wastewater treatment, or directly at <https://www.sbwrd.org/engineering-faq/>.

Water Fees of Other Summit County Municipalities

CITY FEES & TAXES – OTHER SUMMIT COUNTY CITIES

Coalville Water Department

Coalville City’s Water Department is responsible for delivering culinary and secondary water to the residents of Coalville. Secondary water is available from approximately May 10th through the end of September 30th. Coalville’s Water department makes every effort to provide clean, safe drinking water. Each year the water professionals spend several days training, leaning new techniques on maintaining the water system and keeping it safe from contaminates. Each of Coalville’s Water Operators is certified from the State of Utah’s Division of Drinking Water. ⁷

Questions:

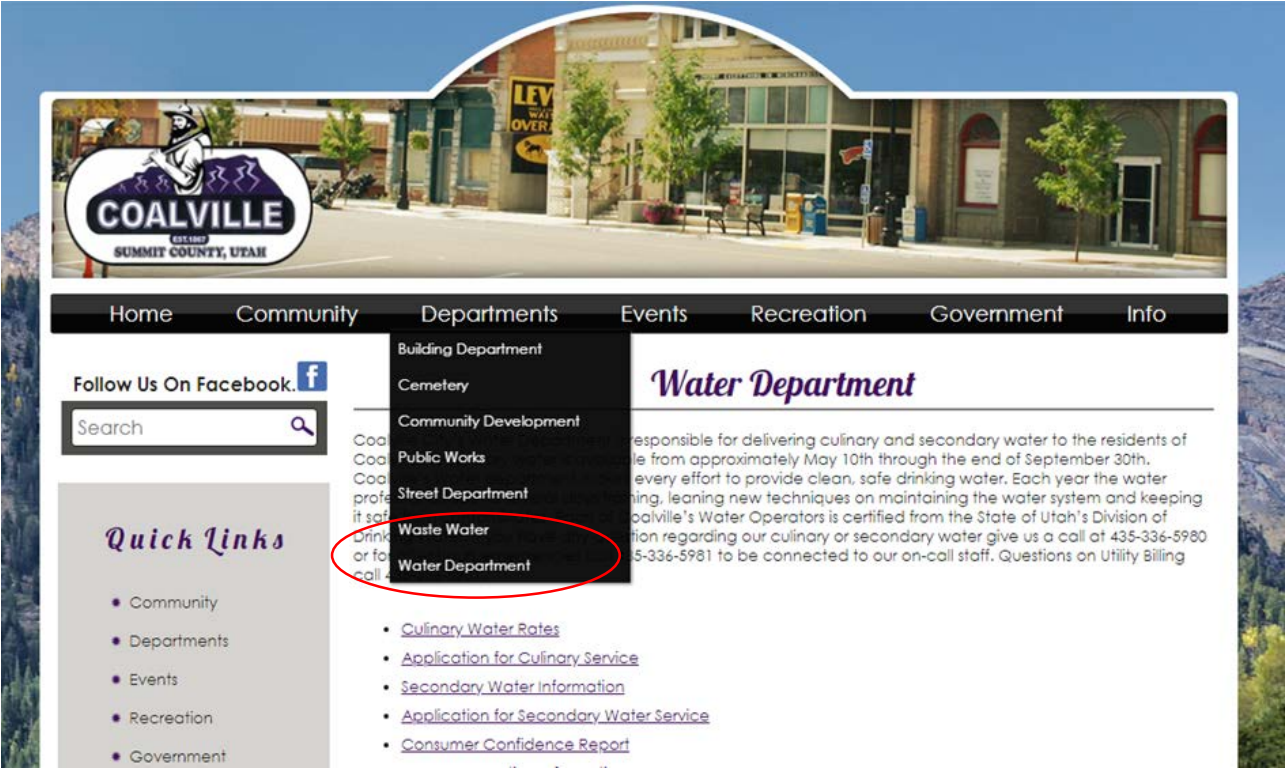
Culinary or Secondary Water 435-336-5980

After hours emergencies 435-336-5981

Utility Billing 435-336-5981

Applications for water service, water rates and additional water related information can be found at <http://www.coalvillecity.org/water-department.htm>

Figure 8 Coalville City Website



Source: <http://www.coalvillecity.org/water-department.htm>

CITY FEES & TAXES – OTHER SUMMIT COUNTY CITIES

Coalville City

Figure 9 Water and Sewer Service Rates



COALVILLE CITY WATER and SEWER SERVICE RATES

WATER RATES

1. Water Service Within The City Limits:

The rate is a base fee of \$50.00 per month for each connection plus monthly usages rates as follows for culinary water:

- \$1.00 per 1,000 gallons for usage to and including 10,000 gallons
- \$2.00 per 1,000 gallons for usage of 10,001 gallons to and including 30,000 gallons
- \$3.00 per 1,000 gallons for usage over 30,000 gallons

2. Water Service Outside The City Limits:

The rate is a base fee of \$50.00 per month for each connection plus monthly usages rates as follows for culinary water:

- \$1.50 per 1,000 gallons for usage to and including 10,000 gallons
- \$3.00 per 1,000 gallons for usage of 10,001 gallons to and including 30,000 gallons
- \$4.50 per 1,000 gallons for usage over 30,000 gallons

SEWER RATES

1. Sewer Service Single Residence:

The rate is \$57.00 per month for each connection

2. Multiple Dwelling and Mobile Home Parks:

The rate is \$57.00 per month for each connection

3. Commercial:

The rate is \$57.00 minimum plus usage in excess of 8,500 gallons at \$3.29 per 1,000 gallons (usage based on water use)

4. RV Parks:

The rate is \$15.54 per space, plus usage at \$2.29 per 1,000 gallons (usage based on water use)

All services are billed for past month usage. IE: June usage is billed at the first of July and payment is due at the end of July.

Mayor
Trever Johnson

Council
Adrienne Anson
Cody Blonquist
Arlin Judd
Rodney Robbins
Tyler Rowser

PO Box 188
10 North Main Street
Coalville, UT 84017

P: 435.336.5981
F: 435.336.2062
cityhall@coalvillecity.org
www.coalvillecity.org

Source: https://media.rainpos.com/3855/coalville_city_water_and_sewer_rates.pdf

CITY FEES & TAXES – OTHER SUMMIT COUNTY CITIES

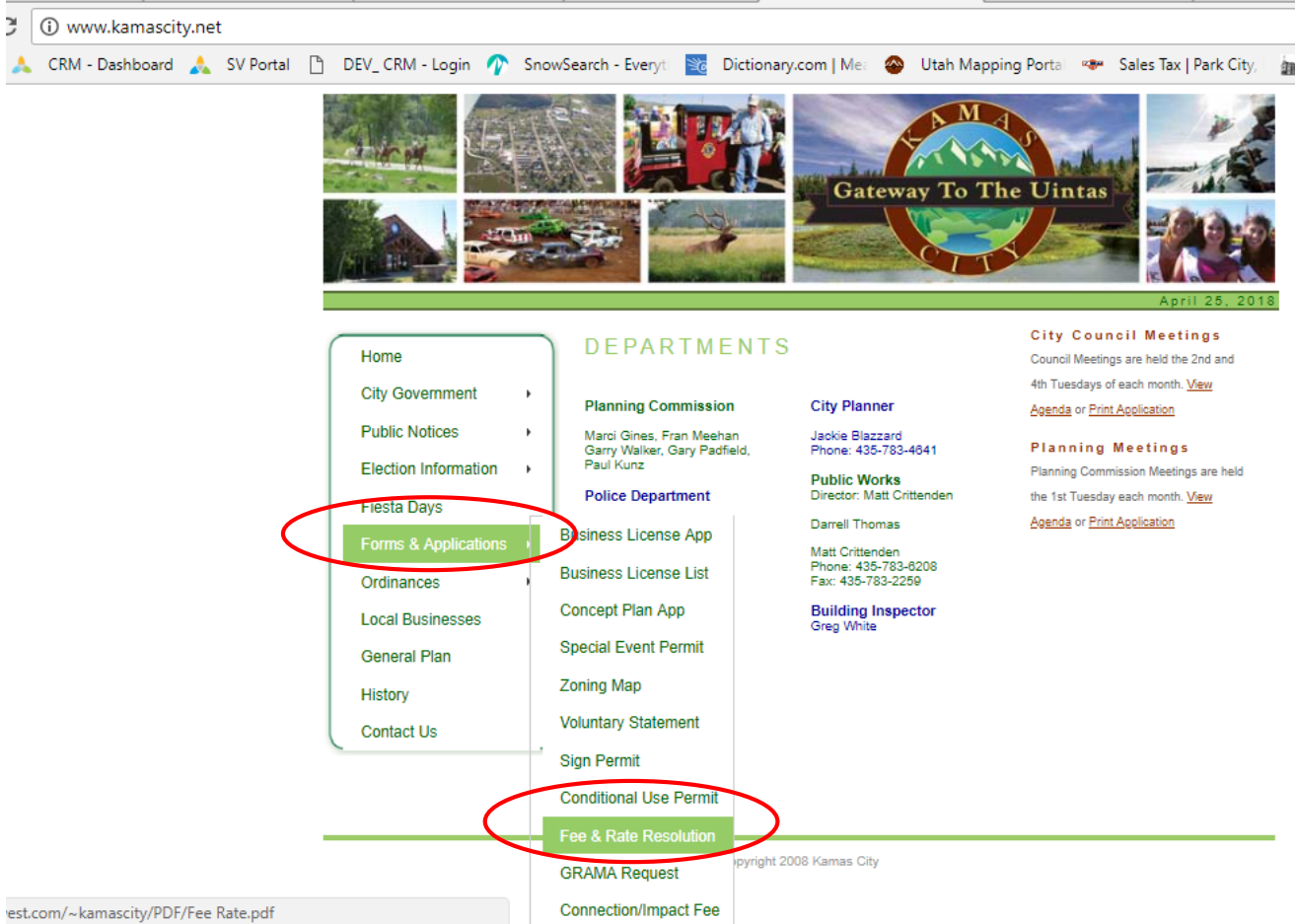
Kamas

The City of Kamas is located about eighteen miles east of Park City and about forty-five miles southeast of Salt Lake City in a valley surrounded by the Uinta Mountains to the east, the Wasatch Mountains to the west, the Provo River on the south, and the Weber River to the north. Beaver Creek, a tributary of the Weber, traverses the center of the city. ⁸

Information for Water fees and rates is found on the Kamas City website, <http://www.kamascity.net>, by navigating to Forms & Applications, then clicking on the Fee & Rate Resolution link. The KAMAS CITY FEE & RATE RESOLUTION NO. 2012-05 document, Section 2, <http://mypages.allwest.com/~kamascity/PDF/Fee%20Rate.pdf>, contains detailed water fee information.

Additional fee information is also found in this document relating to construction, impact fees, licenses, rental of city facilities, and copying documents.

Figure 9 Kamas City Website



Source: <http://www.kamascity.net/>

CITY FEES & TAXES – OTHER SUMMIT COUNTY CITIES

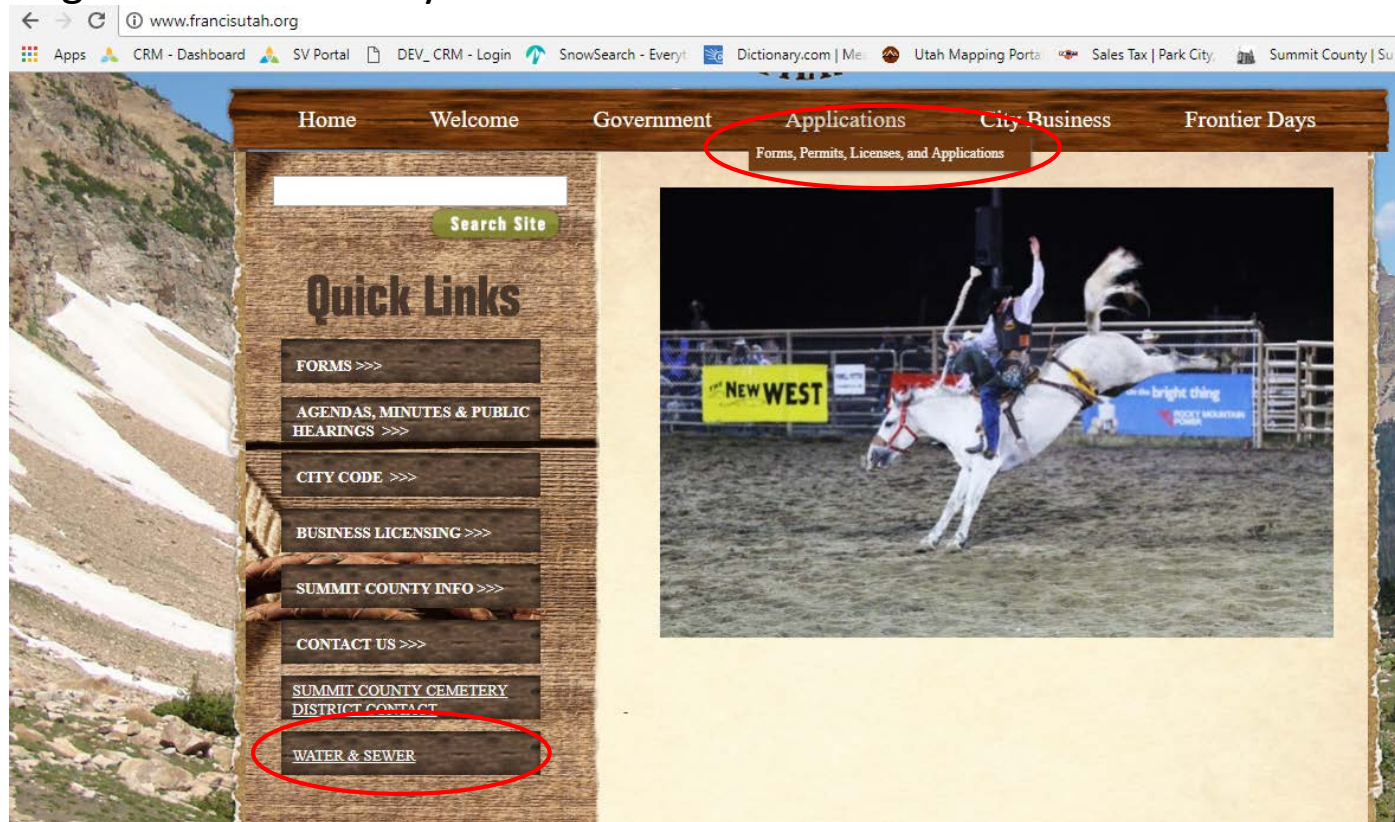
Francis

Francis, Utah, located at the southern end of Kamas Valley, is the gateway to the Uinta Mountains and Wasatch National Forest. Surrounded by mountains, the valley offers a scenic getaway that retains its rural atmosphere in the midst of expansion. Since it was incorporated in 1939, Francis has enjoyed the growth brought about by the development of the Jordanelle Dam and reservoir, as well as the resulting highway which now gives travelers a more direct route to the Salt Lake Metropolitan area, just 45 minutes away.¹⁰

Water and sewer rates are found from the home page, www.francisutah.org, under the Quick Links menu, or go directly to the web page at, <http://www.francisutah.org/water-and-sewer.htm>.

Additional city fees are found on the Francis city website, www.francisutah.org. Forms, permits, licenses and applications are found by navigating to the Applications header and clicking on the dropdown, Forms, Permits, Licenses and Applications, or go directly to the web page at, <http://www.francisutah.org/forms-permits-licenses-and-applications.htm>.

Figure 10 Francis City Website



Source : www.francisutah.org

Tax Rates

Table 1 Tax Data 2018

Compiled from 3 rate charts

- Combined Sales and Use Tax Rates
- Other Tax Rates & Fees
- Simplified Chart

Source: <https://tax.utah.gov/sales/rates>

Tax Rate and Fees, effective as of April 1, 2018 for Park City, Snyderville Basin and Summit County, Utah.

Utah Code Title 59, Chapter 12 Sales & Use Tax Act			
Sales Tax Rates and Fees Rates			
in effect as of April 1, 2018			
Sales & Use Tax Act Tax Rates	Park City	Snyderville Basin	Summit County
Personal Income Tax ¹	5.0%	5.0%	5.0%
Corporation Income Tax ²	5.0%	5.0%	5.0%
Federal Tax Deduction	N/A	N/A	N/A
Sales & Use Tax Act Tax Rates			
State Sales & Use Tax	4.7%	4.7%	4.7%
Local Sales & Use	1.0%	1.0%	1.0%
Mass Transit	0.3%	0.3%	N/A
Resort Community Tax	1.1%	N/A	N/A
Addtl. Resort Community Tax	0.5%	N/A	N/A
Recreation, Art, and Parks (RAP)	0.1%	0.1%	0.1%
County Option Sales Tax	0.25%	0.25%	0.25%
Combined Sales Rate	8.45%	6.85%	6.55%
Restaurant Tax (Meals Only)	1.0%	1.0%	1.0%
Total Sales Tax on Meals	9.45%	7.85%	7.55%
Transient Room Tax	3.0%	3.0%	3.0%
Total Tax on Room Rents	12.77%	10.17%	9.87%
Telecommunications License Tax*	3.5%	N/A	N/A
Total Emergency Services **	1.32%	1.32%	1.32%
Municipal Energy Tax	6.0%	N/A	N/A
Motor Fuel (per gallon)	\$0.294	\$0.294	\$0.294
Cigarette (per pack of 20)	\$1.70	\$1.70	\$1.70
Source: Utah State Tax Commission			
Updated April 2018			
NOTES:			
¹ Utah Individual Income Tax rate is a flat rate of 5% for all income levels			
² Utah corporate income tax rate is a flat rate of 5% for all income levels			
*Monthly charge per telephone line			
**The municipal telecommunication license tax is a tax on the provider, not on the consumer. This rate should not be added to the combined sales and use tax rate from the previous section. If the tax is passed on to the consumer, the tax is included in the taxable base for combined sales tax purposes. See Utah Code 10-1-403 for more information.			

ENDNOTES

Referenced Documents, Websites, Tables and Figures

Section 8 City Fees & Taxes

Referenced Documents

Page 5

¹ Retrieved from <http://www.parkcity.org/departments/public-utilities/water-division>

Page 6

² Retrieved from <http://www.parkcity.org/departments/public-utilities/customer-service/water-services>

Page 13

³ Retrieved from <https://www.sbwrld.org/engineering-faq/> see Wastewater Treatment Section

⁴ Retrieved from <https://www.sbwrld.org/east-canyon-water-reclamation-facility/>

⁵ Retrieved from <https://www.sbwrld.org/silver-creek-reclamation-facility/>

⁶ Retrieved from <https://www.sbwrld.org/engineering-faq/> see Billing Question 9

Page 15

⁷ Retrieved from <http://www.coalvillecity.org/water-department.htm>

Page 17

⁸ Retrieved from <http://www.kamascity.net/>

Figures

Page 6

Figure 1 Park City Website

Source <http://www.parkcity.org/departments/public-utilities/customer-service/water-services>

Page 7

Figure 2 WATER CONSUMPTION RATES - FISCAL YEAR 2017

<http://www.parkcity.org/departments/public-utilities/customer-service/water-services/rates>

Page 8

Figure 3 WATER CONSUMPTION RATES - FISCAL YEAR 2017- continued

<http://www.parkcity.org/departments/public-utilities/customer-service/water-services/rates>

Page 9

Figure 4 Pumping Fees and Surcharge Group Map

<http://www.parkcity.org/departments/public-utilities/customer-service/water-services/rates>

Figures

Page 10

Figure 5 Stormwater Fees and Zone Map

<http://www.parkcity.org/departments/public-utilities/customer-service/water-services/rates>

Page 11

Figure 6 Park City Website: municipal-codes-ordinances-resolutions-and-fees

Source: <http://www.parkcity.org/government/municipal-codes-ordinances-resolutions-and-fees>

Page 14

Figure 7 Snyderville Basin Water Reclamation Website

Source :<https://www.sbwrtd.org>

Page 15

Figure 8 Coalville City Website

<http://www.coalvillecity.org/water-department.htm>

Figures

Page 16

Figure 9 Water and Sewer Service Rates

Source: https://media.rainpos.com/3855/coalville_city_water_and_sewer_rates.pdf

Page 18

Figure 10 Francis City Website

<http://www.francisutah.org/forms-permits-licenses-and-applications.htm>

<http://www.francisutah.org/water-and-sewer.htm>

Tables

Page 20

Table 1 Tax Data 2018 compiled from 3 rate charts

Source: <https://tax.utah.gov/sales/rates>