

**Palm Beach**  
INTERNATIONAL AIRPORT



**PALM BEACH COUNTY DEPARTMENT OF AIRPORTS  
846 PALM BEACH INTERNATIONAL AIRPORT  
WEST PALM BEACH, FLORIDA 33406**

# **DISADVANTAGED BUSINESS ENTERPRISE OUTREACH MEETING**

**November 16, 2017  
2:00 PM**



2090 Palm Beach Lakes Blvd.  
Suite 600  
West Palm Beach, FL 33409

# AECOM INDUSTRY RANKINGS

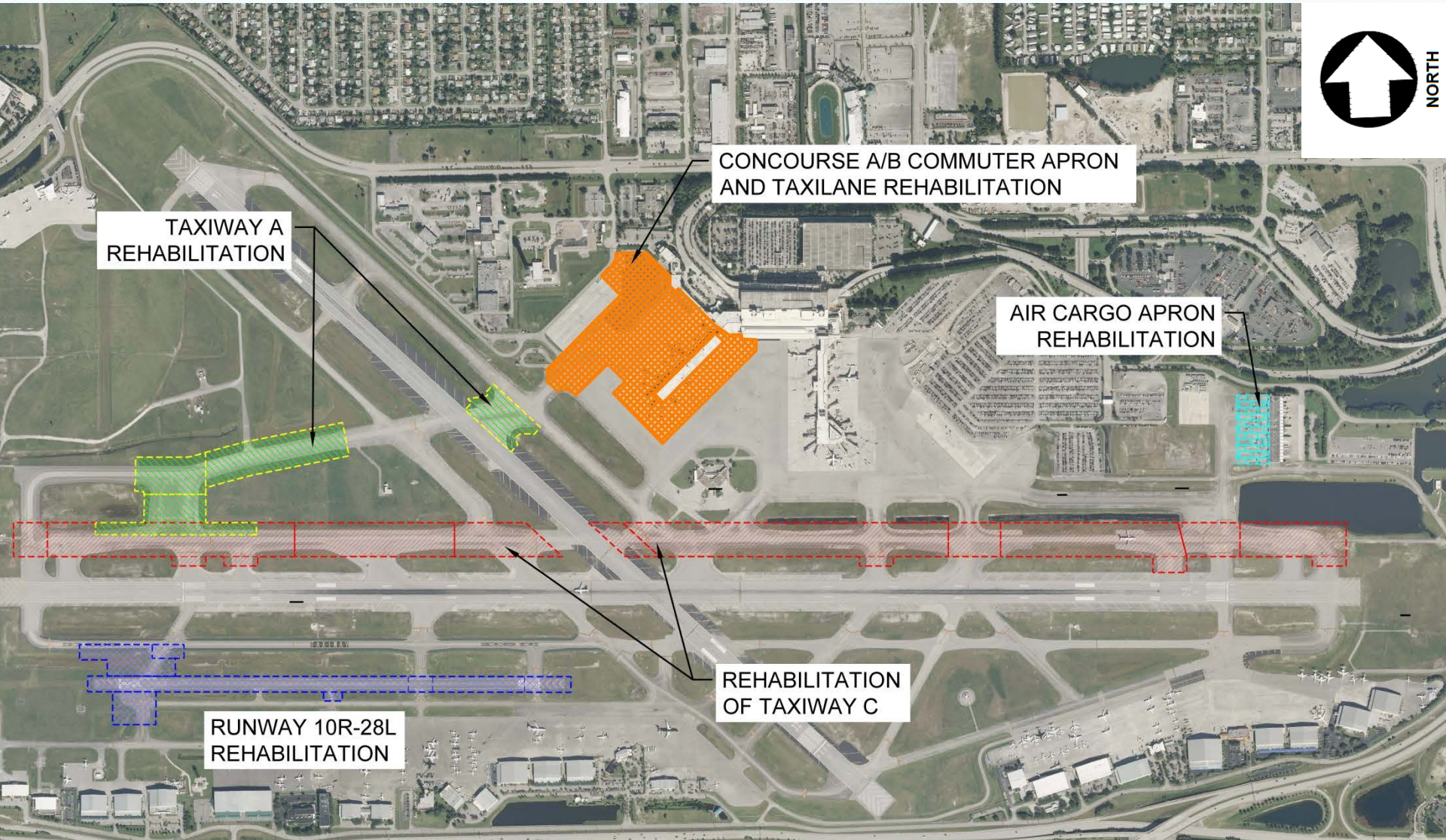
## 2017 ENR Rankings



- #1 Top 150 Global Design Firms
- #1 Top 500 Design Firms
- #1 Pure Design
- #1 Transportation
- #1 General Building

<b>Airports</b>	<b>1</b>	Mass Transit/Rail	1
Bridges	4	Marine and Port Facilities	1
Chemical & Soil Remediation	3	Power	3
Commercial Offices	2	Retail	11
Correctional Facilities	1	Sanitary and Storm Sewers	2
Education	1	Sports Facilities	5
General Building	1	Transmission and Distribution	5
Government Offices	2	Transportation	1
Highways	1	Wastewater Treatment Plants	2
Hydroplants	5		

# RECENT PAVING PROJECTS



## PBI CONSTRUCTION PROJECTS WITH AECOM



**BASE CONTRACT BID**

Bid Item	Specification No.	Description	Unit	Quantity
1	01000-1	MOBILIZATION	LS	1
2	01030	MAINTENANCE OF AIR OPERATIONS AREA TRAFFIC	LS	1
3	01720	PROJECT RECORD DOCUMENTS	LS	1
4				
5				
6				
7				
8				
9				
10				
11				
12				
13				
14				
15				
16				
17				
18				
19				
20				
21				
22				
23				
24				
25				
26	T-904-5.1	SODDING	SY	300
27	519-78	BOLLARDS	EA	28
28	L-108-5.1	AIRCRAFT GROUND RECEPTACLES WITH 3/4"x20' GROUND RODS INSTALLED IN NEW FULL STRENGTH APRON CONCRETE/PAVEMENT.	EA	4
29	L-108-5.2	PROVIDE AND INSTALL #4/0 BARE COPPER GROUNDING CONDUCTOR INSTALLED IN EARTH/NEW APRON PAVEMENT.	LF	500



**BASE CONTRACT BID**

Bid Item	Specification No.	Description	Unit	Quantity	
1	01000-1	MOBILIZATION	LS	1	
2	01030	MAINTENANCE OF AIR OPERATIONS AREA TRAFFIC	LS	1	
3	01720	PROJECT RECORD DOCUMENTS	LS	1	
4	P-101-5.1			13700	
5	P-101-5.2		27500		
6	P-101-5.3		22100		
7	P-101-5.4		1000		
8	P-156-5.1		1		
9	P-211-5.1		3710		
10	P-211-5.2		10350		
11	P-211-5.3		27800		
12	P-211-5.4		250		
13	P-401-8.1		14050		
14	P-501-8.1		3570		
15	P-501-8.2		800		
16	P-501-8.3		350		
17	P-605-5.1		44000		
18	P-605-5.2		2800		
19	P-610-5.1		385		
20	P-620-5.1		7450		
21	P-620-5.2		16900		
22	P-620-5.3		14100		
23	P-620-5.4		PAVEMENT MARKING REMOVAL	SF	8450
24	D-751-5.1		DRAINAGE STRUCTURE INSPECTION	LS	1
25	D-751-5.2		DRAINAGE STRUCTURE REPAIR	AL	1
26	L-108-5.1		AIRCRAFT GROUND RECEPTACLES WITH 3/4"X20'GROUND RODS INSTALLED IN NEW FULL STRENGTH APRON CONCRETE/PAVEMENT	EA	6
27	L-108-5.2	PROVIDE AND INSTALL #4/0 BARE COPPER GROUNDING CONDUCTOR INSTALLED IN EARTH/NEW APRON PAVEMENT.	LF	750	

**BASE CONTRACT BID**

Bid Item	Specification No.	Description	Unit	Quantity
1	01000-1	MOBILIZATION	LS	1



25	L-106-5.7	CONDUIT/DUCTBANK/MANHOLE SYSTEM	LF	2,000
26	L-108-5.8	#8, 5KV, L-824 CONDUCTOR INSTALLED IN NEW AND EXISTING CONDUIT/DUCTBANK/MANHOLE SYSTEM.	LF	93,000
27	L-109-5.1	PROVIDE AND INSTALL NEW L-829 10 KW FERRORESONANT, 208V, 3 STEP REGULATOR WITH 120V CONTROL VOLTAGE.	EA	2
28	L-109-5.2	MODIFY EXISTING AIRFIELD ELECTRICAL VAULT AND INSTALLATION OF ALLOWANCE ACCOUNT ALCMS EQUIPMENT, COMPLETE.	LS	1
29	L-109-5.3	REMOVAL OF EXISTING REGULATOR, COMPLETE.	EA	3

**BASE CONTRACT BID**

Bid Item	Specification No.	Description	Unit	Quantity
1	01000-1	MOBILIZATION	LS	1
2	01030			1
3	01720			1
4	P-101-			3,100
5	P-101-			45,700
7	P-101-			13,500
8	P-101-			2,350
9	P-152-			1,800
10	P-156-			1
11	P-211-			5,100
12	P-211-			2,400
13	P-401-			10,020
14	P-620-			16,750
15	P-620-			27,200
16	P-620-			16,750
17	P-620-			1,920
18	T-904-			17,900
19	L-108-			150
20	L-108-			150
21	L-108-			50
22	L-108-			20
23	L-108-			20
24	L-108-			4,900
25	L-108-			28,000
26	L-109-5.1	INSTALLATION OF ALLOWANCE ACCOUNT ALCMS GRAPHIC UPDATES, COMPLETE.	LS	1
27	L-109-5.2	ALLOWANCE ACCOUNT: MODIFY EXISTING AIRFIELD LIGHTING CONTROL SYSTEM, COMPLETE.	ALL	1
28	L-110-5.1	ONE 2" SCHEDULE 40 PVC CONDUIT DIRECT BURIED IN EARTH/NEW PAVED SHOULDER COMPLETE IN PLACE.	LF	850
29	L-110-5.2	ONE 2" SCHEDULE 40 PVC CONDUIT INSTALLED IN NEW FULL STRENGTH PAVEMENT COMPLETE IN PLACE.	LF	50



03.06.2017 13:24

**BASE CONTRACT BID**

Bid Item	Specification No.	Description	Unit	Quantity
1	01000-1	MOBILIZATION	LS	1
2	01030-1	MAINTENANCE OF AIR OPERATIONS AREA TRAFFIC	LS	1
3	01720-1	PROJECT RECORD DOCUMENTS	LS	1
4	P-101			635
5	P-101			34,750
6	P-101			500
7	P-151			1.10
8	P-152			75
9	P-156			1
10	P-401			4,300
11	P-620			21,100
12	P-620			11,900
13	P-620			21,100
14	P-620			500
15	T-904			6,780
16	T-905			75
17	L-108			25
18	L-108			25
19	L-108			25
20	L-108			1
21	L-108			1
22	L-108			150
23	L-108			200
24	L-110			150
25	L-110-5.6	INTERCEPT EXISTING CONDUIT SYSTEM AND CONNECT TO NEW CONDUIT SYSTEM AND EXTEND CIRCUIT.	EA	2
26	L-115-5.4	REMOVAL OF EXISTING JUNCTION CAN/LIGHT BASE CAN IN EARTH/SHOULDER PAVEMENT, COMPLETE	EA	6
27	L-115-5.6	REMOVAL OF EXISTING ELEVATED FIXTURE, L-867 TOP SECTION AND SPACERS FROM THE EXISTING BASE CAN BOTTOM SECTION, COMPLETE.	EA	12
28	L-115-5.8	REMOVAL OF EXISTING INPAVEMENT FIXTURE, L-868 TOP SECTION AND SPACERS FROM THE EXISTING BASE CAN BOTTOM SECTION, COMPLETE.	EA	3



06.05.2017 11:01



# Quality Control Program

## Section 100 (General Provisions)

- Description of Program
- Quality Control Organization
- Quality Control Technicians
- Project Progress Schedule
- Submittals Schedule
- Inspections Requirements
- Quality Control Testing Plan Documentation
- Corrective Action Requirements
- Surveillance By The Engineer
- Noncompliance

# Technical Specifications

## Item P-101 Surface Preparation

- Bituminous Pavement Removal – Full Depth
- Bituminous Pavement Milling
- Clean-up
- Sawcutting
- Bituminous Pavement Crack Sealing

# Technical Specifications

## Item P-152 Excavation, Subgrade & Embankment

- Excavation
- Subgrade
  - Compaction requirements
  - Protection of subgrade

# Technical Specifications

## Item P-211 Lime Rock Base Course

- Source of supply
- Placing and spreading
- Compaction requirements
- Finishing
- Thickness control
- Protection

# Technical Specifications

## Item P-401 Hot Mix Asphalt (HMA) Pavement

- Job mix formula (JMF)
- Test section
- Weather Limitations
- Equipment
  - Material Transfer Vehicle (MTV)
  - HMA Pavers
  - Rollers
- Laydown Plan, transporting, placing, and finishing
- Joints/Cold Joints
- Acceptance
  - Density requirements
  - Thickness
  - Smoothness
  - Grade

# Technical Specifications

## Item P-501 Portland Cement Concrete (PCC)

### Pavement

- Mix design
- Equipment
- Forms
- Mixing concrete
- Limitations on mixing and placing
- Placing concrete
- Joints
  - Construction
  - Contraction
- Finishing
- Curing
- Testing

# Technical Specifications

## Item P-603 Bituminous Tack Coat

- Bituminous material
- Weather limitations
- Application rate

# Technical Specifications

## Item P-610 Structural Portland Cement Concrete

- Qualifications for concrete testing services
- Mixing conditions
- Forms
- Reinforcement
- Placing concrete
- Joints
  - Construction
  - Expansion
- Finish
- Curing and protection



# Technical Specifications

## Item P-620 Runway & Taxiway Markings

- Material acceptance
- Reflective media
  - Type III – Yellow
  - Type I – Red
- Preparation of surface
- Markings removal
- Test strip
- Application rate/tolerances
- Temporary markings
  - First coat
  - 24 hours after paving
- Final permanent markings
  - Second coat
  - 30 days after paving



Palm Beach

INTERNATIONAL AIRPORT



**Thank you**

**DISADVANTAGED BUSINESS ENTERPRISE  
OUTREACH MEETING**

**November 16, 2017  
2:00 PM**