



Port Everglades

Master/Vision Plan Update Environmental Stakeholder Meeting

June 15, 2009

Discussion to Focus On:

- **Updating the 2006 Port Everglades Master Plan**
- **Issues dealing with the Turning Notch**
- **Potential results of Infrastructure Development**

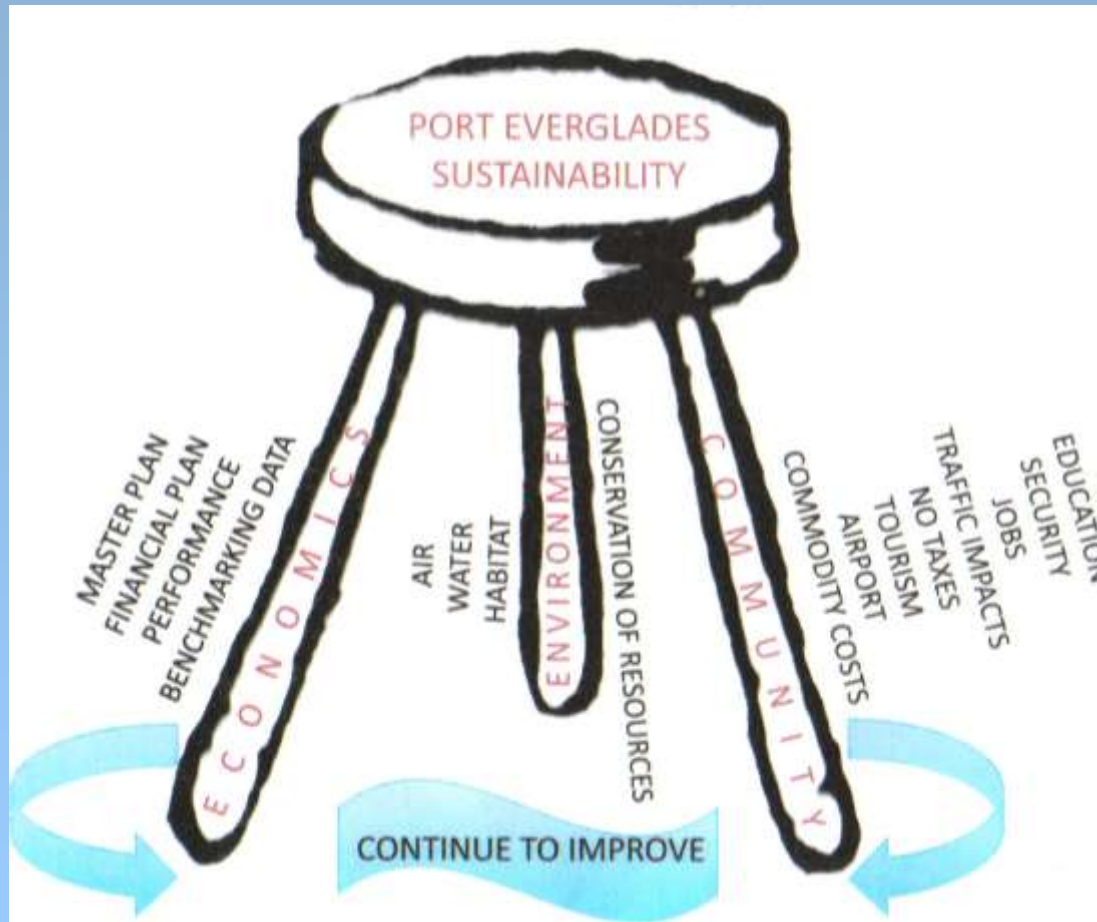


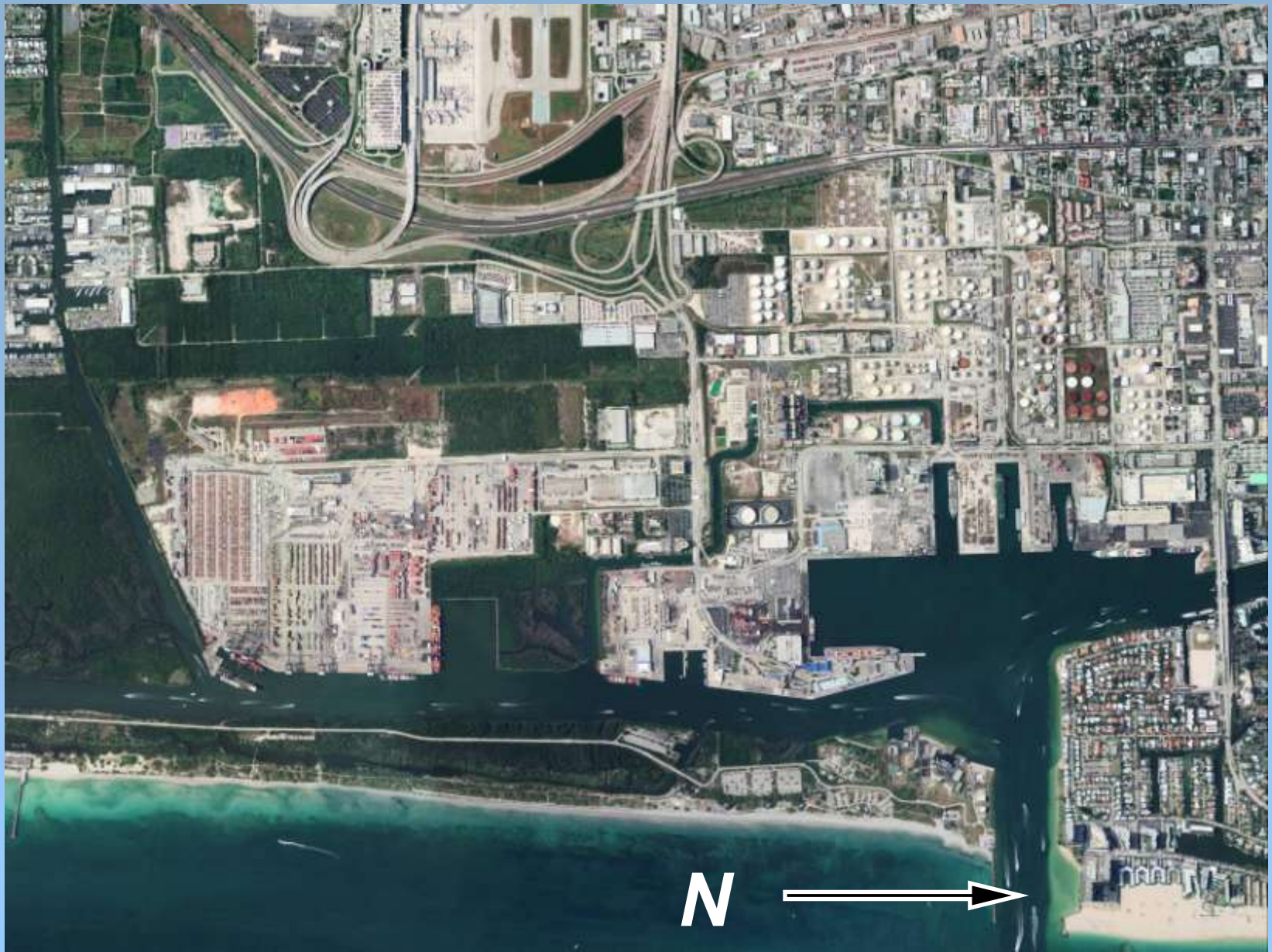
Port Everglades Mission Statement

“The mission of Port Everglades is to manage the County’s port-related assets to maximize the economic benefits to the citizens and businesses of Broward County and State of Florida. The Port will manage the County’s assets in a financially responsible, environmentally sound manner, consistent with the local, state and federal rules and regulations that govern international and domestic trade, transportation and the port industry.”



From the Port's Business Plan





5-Year Master Plan Progress

Years 2008 to 2012

Board Approved Master Plan – December 2007

Northport Projects

- **“Carve Out” of Convention Center**
 - Preliminary engineering on By-Pass Road in progress
 - Determined Public Works Facility not impacted; Port Maintenance facilities under study
 - Convention Center & Port have agreed to DRI boundary revisions
 - Required renovations to Cruise Terminal 2 and 4 to be determined
- **Molasses Tanks Reuse/RLI**
 - In process to select marine terminal operator
- **Cruise Terminal 4 Expansion**
 - New intermodal area west of Terminal being coordinated with By-Pass Road and future Slip 2 expansion
 - Building drawings complete; working out parking requirements with City



5-Year Master Plan Progress

Years 2008 to 2012

Midport Projects

- **Demolition of Transit Shed 16**
Demolition complete for increased container yard area
- **Berths 16-17 Crane Upgrades**
Renovation of Crane P2 process in progress; procurement for mobile harbor crane in progress
- **Midport Parking Garage**
Consultant design fee budgeted for 1200 space parking structure
- **Cruise Terminal 19 Expansion**
Tied to on-going negotiations with Carnival Corp
- **Midport Roadway Expansion**
Adds taxi, limo staging to Eller Drive; construction anticipated to begin June 2009
- **Cruise Terminal 21/22 Expansion**
Tied to on-going negotiations with Carnival Corp
- **FPL Discharge Canal Intermodal Bridge**
Construction started in May 2009
- **Cruise Terminal 18 Expansion**
Under construction; World's largest cruise terminal for world's largest cruise ship, Oasis of the Seas; Arrival in November 2009



5-Year Master Plan Progress

Years 2008 to 2012

Southport Projects

- **Turning Notch**

Mangrove Wetland Assessment of existing 8.7 acres of Conservation Easement & Enhancement Alternative for Port Uplands (Phase 1) complete; discussion with FDEP on the comments continuing; soil sampling for upland site begins end of June

- **Southport Phase VIIA/VIII**

Construction started in April 2009

- **FTZ/Warehouse RFP**

On hold due to no need to relocate Public Works & current economy

- **Crushed Rock/Aggregate Terminal**

Location to be evaluated in updated master plan

- **ICTF Rail (Phase I for Import Crushed Rock Facility)**

Schedule to be evaluated in updated master plan

- **McIntosh Loop Road**

Concept site plan developed; traffic report being prepared

- **Dry Stack Marina RLI**

Scheduled for a later year

People Mover Recommended Alternative



- Convenient access to seaport/airport for employees, travelers, and others using the regional transportation network
- Greater mobility and transportation options for travelers on seaport/airport roadways due to increased capacity
- Less congestion on the roadway enhances the environment
- Public Hearing scheduled for June 25, 2009; 6 pm; Airport Auditorium



Environmental Improvements

- **Air Quality**

- Energy Performance Project led by Trane South Florida. Port investing \$4.4 million in energy-efficient equipment upgrades in the cruise terminals and office buildings to produce annual reductions of:

- CO₂ 9.8 million pounds
- Sulfur Dioxide 61,101 pounds
- Nitrous Dioxide 17,091 pounds

- Planning ICTF at Southport to transport more freight by rail and less by truck

- Pounds of CO₂ per 100 Ton-miles

Truck Load
19.8

Rail
5.4



Environmental Improvements

- **Water Quality**

- Installed Sediment Traps at selected Storm Drains at Southport
- Scope of Work for Maintenance Dredging Contracts Incorporate Environmental Restrictions and Compliance

- **Natural Habitat**

- Removal of Dry Boat Marina from FPL Discharge Canal
- Offshore Anchorage Modified by Coast Guard to Reduce Potential Habitat Impact.



Cold Ironing / Alternative Marine Power (AMP)

- **Cold Ironing is the process of providing shore-side electrical power to a ship at berth while its main and auxiliary engines are turned off**



- **Cold Ironing infrastructure is being negotiated with Royal Caribbean for installation at Cruise Terminal 18 for the two new Royal Caribbean ships (Oasis and Allure)**

Potential Emission Reduction for Each Ship while in Port

LBS of Emissions (based on 2010 Projections)

	DAILY			YEARLY			
	In Port Emission of Oasis Engines	Emissions with Cold Ironing	Potential Reduction in Emissions	In Port Emission of Oasis Engines	Emissions with Cold Ironing	Potential Reduction in Emissions	Potential % Decrease
CO2	215,974	111,900	104,074	11,230,629	5,818,800	(5,411,829)	-48.2%
Nitrogen Oxide	4,514	48	4,466	234,724	2,480	(232,243)	-98.9%
Sulfur Dioxide	3,160	79	3,081	164,321	4,095	(160,226)	-97.5%
Particulate Matter	83	10	73	4,333	516	(3,817)	-88.1%



Master Plan Update: PHASE I TASK SCHEDULE

180 days - 2/2/09 to 7/31/09

NTP
February 2, 2009

February 2, 2009

February 17, 2009

May 28, 2009

END PHASE I
July 31, 2009

- **Update Element 1:**
Existing Conditions Assessment
- **Update Element 2:**
Market Assessment
- **Update Element 3:**
Plan Development



Master Plan Update: PHASE II TASK SCHEDULE

NTP

180 days - 8/31/09 to 2/26/10

August 31, 2009

August 31, 2009

August 31, 2009

October 30, 2009

November 29, 2009

December 29, 2009

END PHASE II
February 26, 2010

- **Update Element 4:**
Strategy Development
(Project Decision Matrices)
- **Update Element 5:**
Final Master Plan
(Incorporate LPP for Dredging)
- **Update Element 6:**
Plan Implementation
(CIP Assistance)
- **Draft and Final Deliverable**

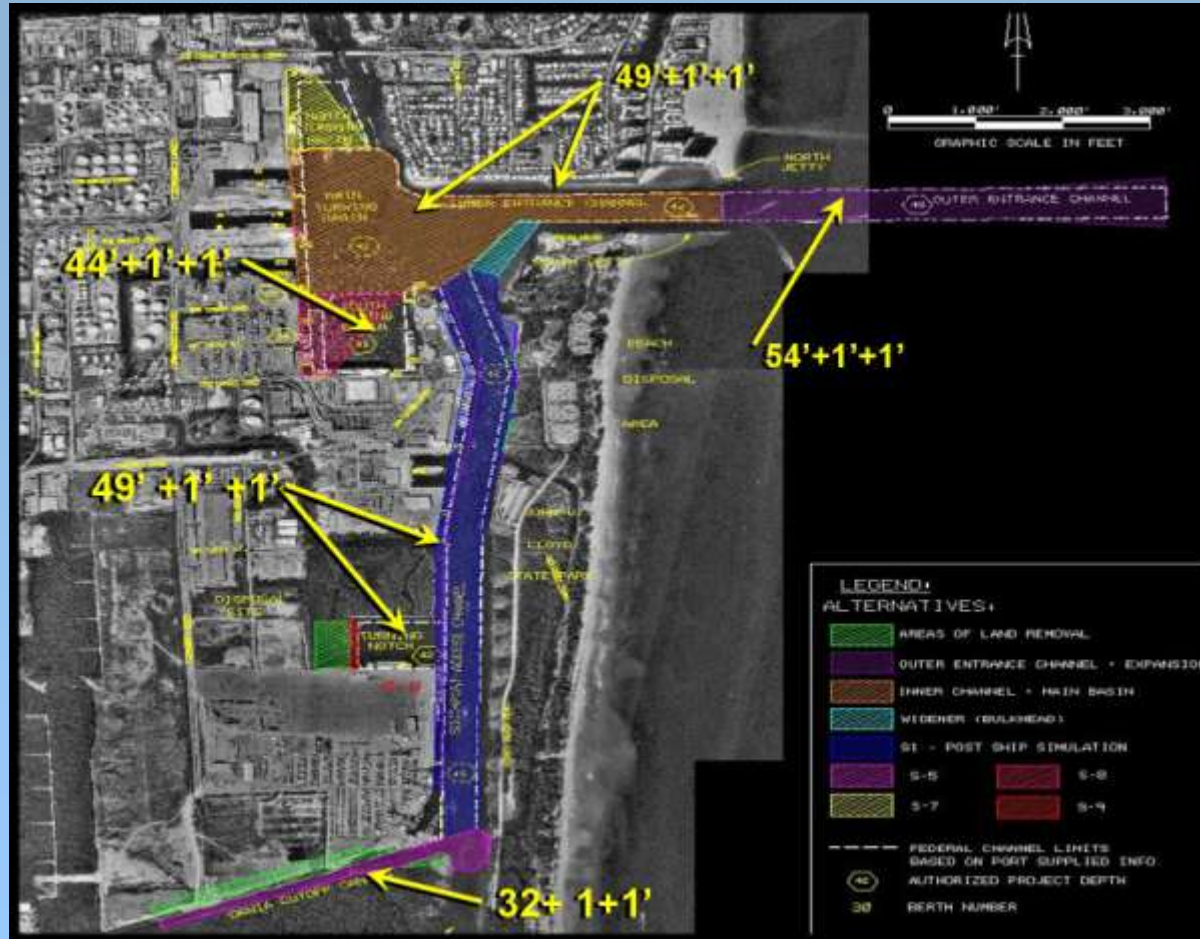


US Army Corps of Engineers Deepening and Widening Study

- **Currently preparing a Waterways Analysis Model to identify the National Economic Benefits; Benefit/Costs for multiple alternatives**
- **Incremental per foot water depth analysis to identify the Corps preferred alternatives**
- **Anticipate preliminary findings by Corps in late Fall 2009**
- **County will identify the Locally Preferred Plan**



ACOE Map of Study Areas



Note: Water depths are currently being evaluated.



Proposed Turning Notch Expansion

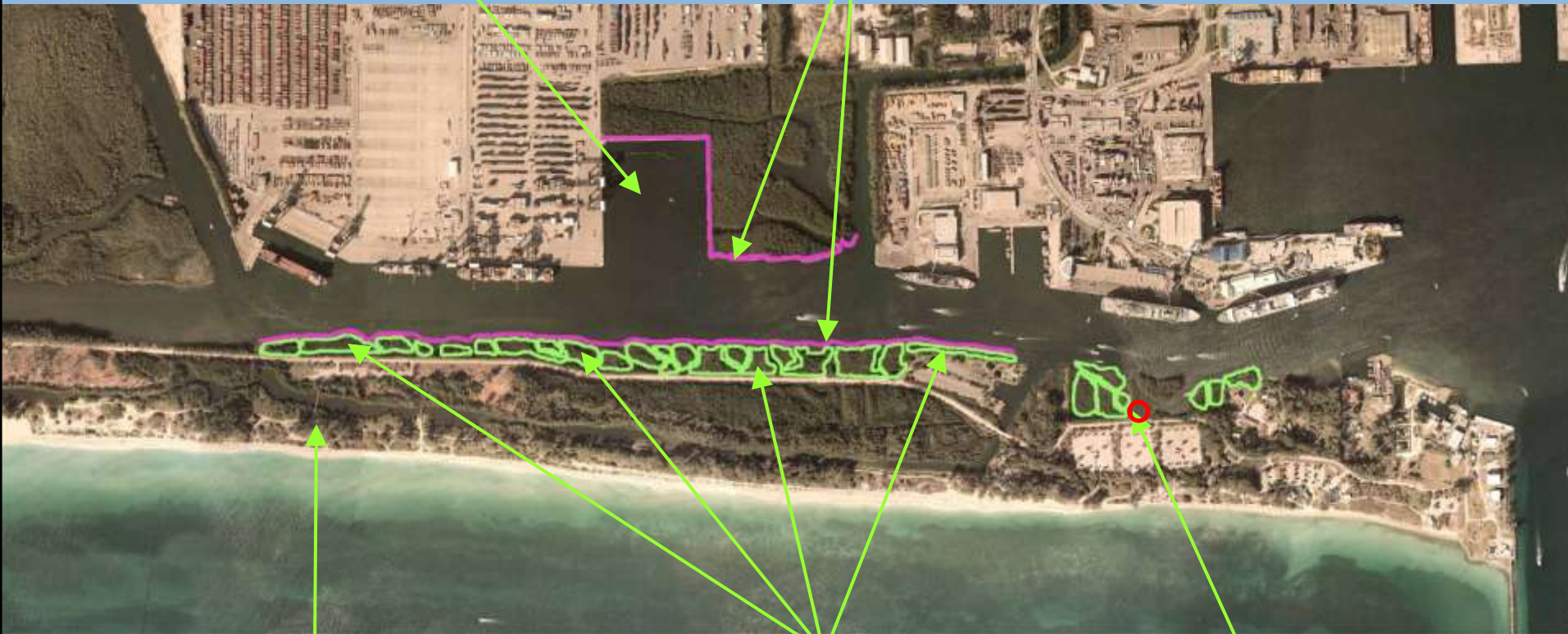
- **Extends Berth 30 and expands Turning Notch west into the 8.7 acres of the Conservation Easement**
- **Adds new bulk berth for importing crushed rock and other raw materials for cement/concrete manufacture**
- **Adds additional container and general cargo berths in old land fill site west of the 8.7 acres; no additional environmental impact**



Wetland Improvements Related to Existing Turning Notch

Existing
Turning Notch

Added Riprap



John U. Lloyd Park

Improved Wetlands

Environmental
Education Center



Wetland Improvements

1990



Today



RIPRAP/TIDAL CHANNELS/MUD FLATS AT JOHN U. LLOYD PARK



Mangrove Enhancement at Port Everglades



Alternative Enhancement Plan



Existing Manatee Nursery
.5 Acre

FPL Discharge Canal
4.74 Acres

Proposed Removal of 8.68 Acres

Proposed Additional 15.36 +/- Acres

Turning Notch

LEGEND	
	6.78 ACRES
	8.68 ACRES
	14.78 ACRES



Advantages of Turning Notch Expansion

- Provides critically needed additional berthing capacity for cargo ships
- Provides new berth for importation of crushed rock
 - Reduces need to quarry product locally;
 - Provides for start of rail service to Southport and initial phase of the Intermodal Container Transfer Facility (ICTF);
 - New infrastructure, paid by private industry, to include enclosed conveyor system, storage building and rail service;
 - Majority of product to leave Port by rail; 4 million tons transported by rail removes 200,000 truck trips per year
 - ICTF, fully operational, removes 171,500 truck trips per year

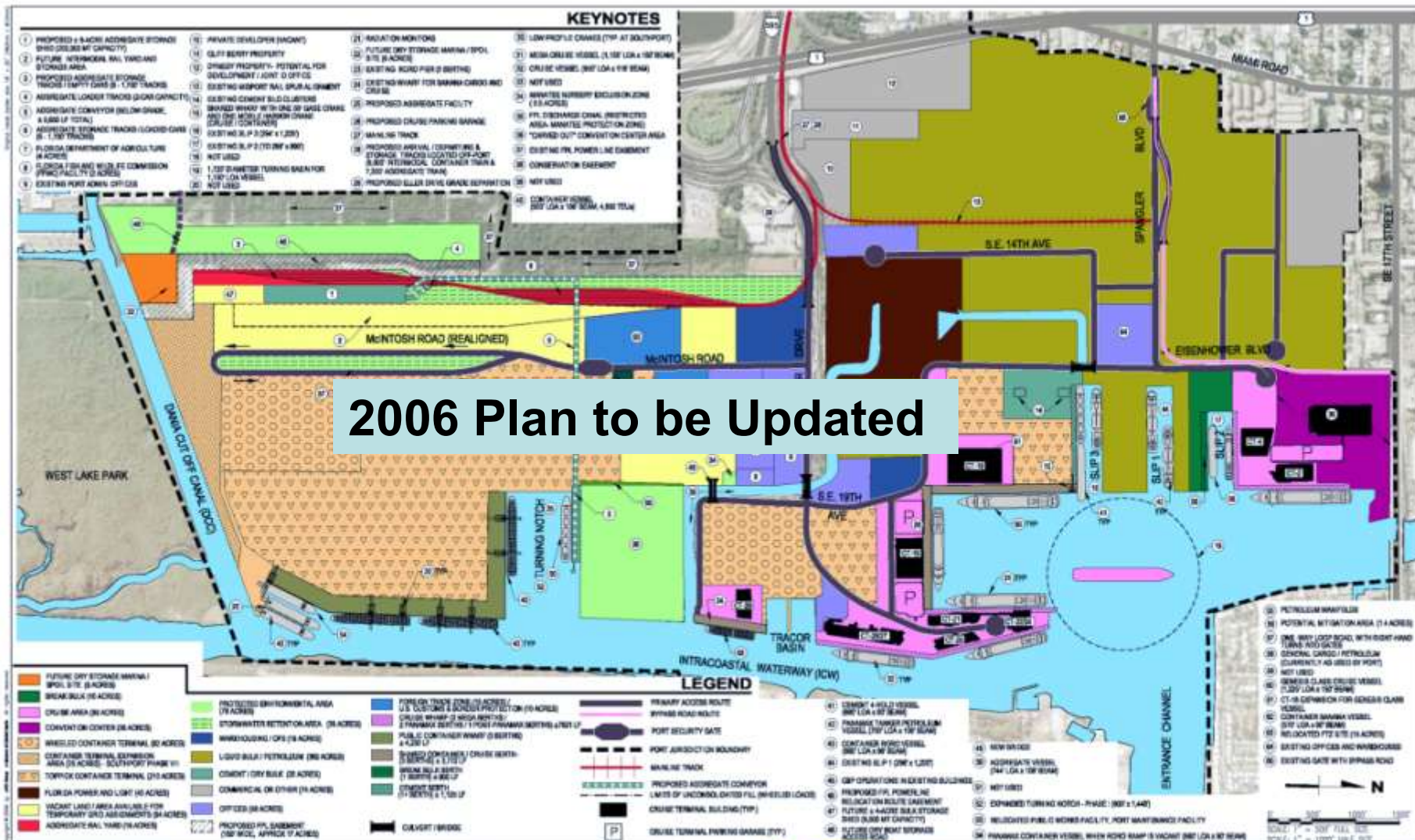


Advantages of Turning Notch Expansion

- **Provides expansion of Conservation Easement**
 - Adds 6.68 +/- acres
 - Provides enhanced control of FPL Discharge Canal
 - Places Conservation Easement adjacent to manatee nursery
- **Provides Port's share of funding for West Lake Mitigation**
 - Port's share provides for a larger, more complete project



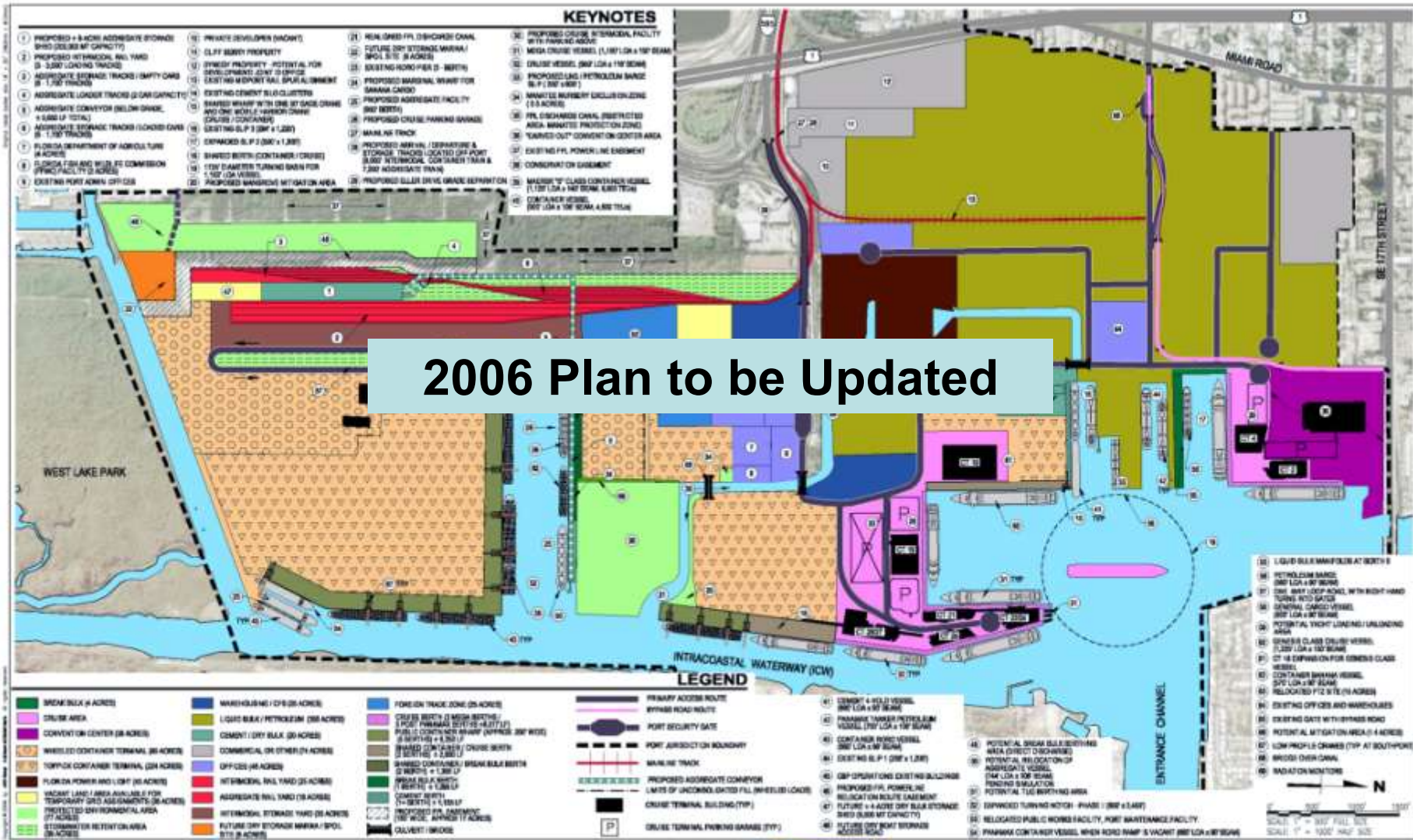
5-Year Plan to be Updated to Fiscal Years 2010 to 2014



Portions of plans shown are an advisory review and are not intended as a basis of design or construction. Subsequent to the advisory review, the user is responsible for obtaining all necessary permits and for ensuring that the plan is in compliance with all applicable laws and regulations. This plan is intended to be used as a planning device and is in no way intended to limit the right of property owners to sue.

10-Year Vision Plan to be Updated to Fiscal Years 2015 to 2019

2006 Plan to be Updated



Portions of plans shown are an advisory only and are not intended as notice of intent to acquire that property. This plan is intended merely as a planning device and is in no way intended to limit the right of property owners to sell their land.

DMJM HARRIS | AECOM



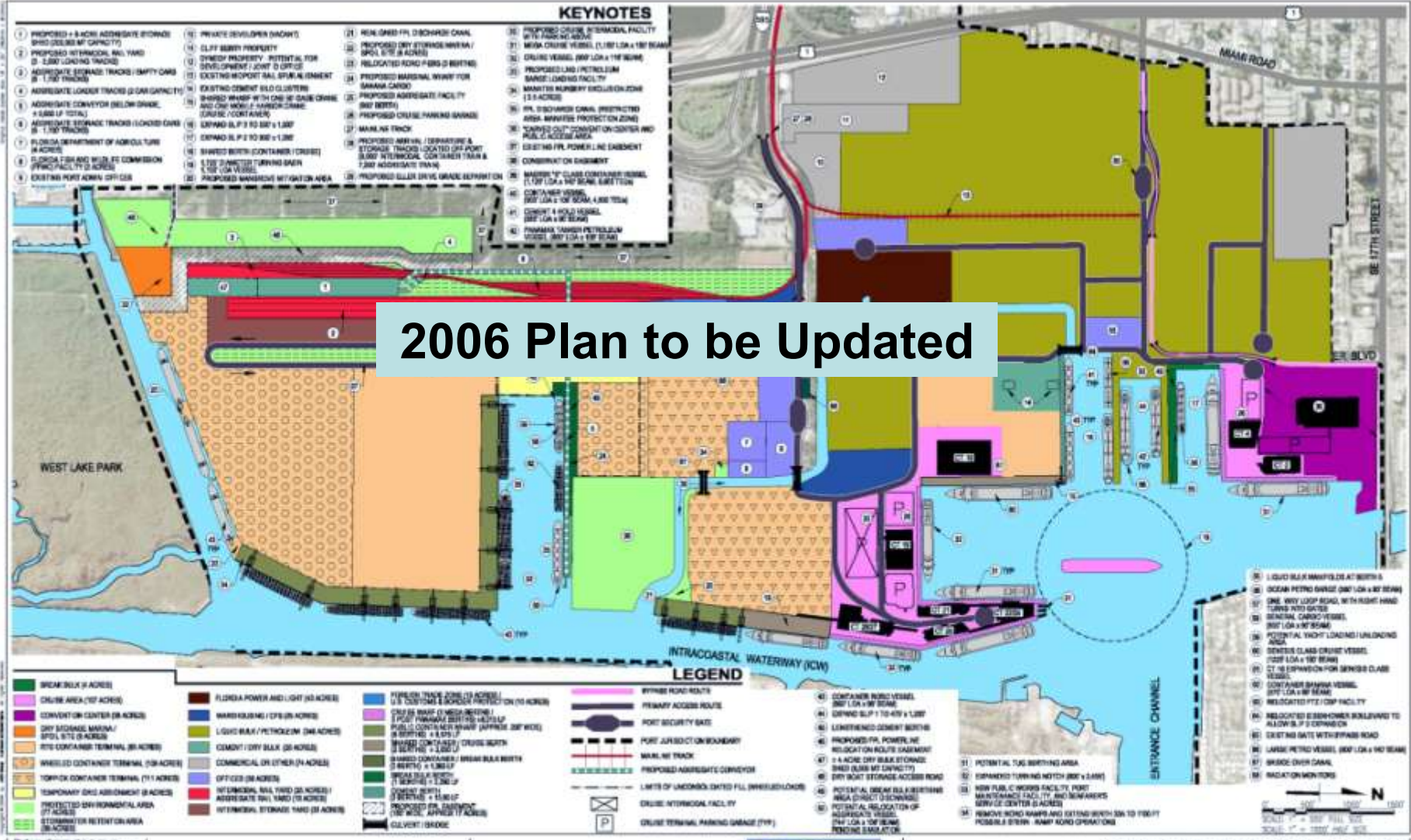
10-YEAR VISION PLAN
YEARS 2013-2016

FIGURE 5.5-5



20-Year Vision Plan to be Updated to Fiscal Years 2020 to 2029

2006 Plan to be Updated



Portions of plans shown are an assembly not drawn or sealed by Port Everglades. Submitter may for discussion purposes only and we not intended as notice of intent to acquire that property. This plan is intended merely as a planning device and is in no way intended to limit the rights of property owners in said area.

DMJM HARRIS | AECOM



20-YEAR VISION PLAN
YEARS 2017 - 2026

FIGURE 5.6-2



Next Steps

- The Consultant Team members are currently working on updating market assessments; drafts in late June
- Website – www.portevergladesmasterplan.com
- Email – porteverglades@broward.org
 - YOUR INPUT and QUESTIONS

