



## **VIOLATION OF NAVIGATION RULES:**

In accordance with U.S. Code, Title 33, Section 2072, it is stated that:

“Whoever operates a vessel in violation of the navigation rules is liable to a civil penalty of not more than \$5,000 for each violation, for which penalty the vessel may be seized and the case shall be brought before the district court of the United States of any district within which the vessel may be found.”



## **BOATING SAFETY TIPS**

Before you leave your house, give a family member or friend your schedule so they know where you will be and when you plan to return. Add details of your boat: type, make, length and color of the hull, vessel name, and registration number.

### **REMINDERS:**

- Ensure you have sufficient life vests for all on board.
- Children under 7 years of age are required to wear life vests on vessels less than 26' in length, while underway. For vessels greater than 26', the life vest shall be easily accessible.
- Check for enough fuel, water, and food to get you where you want to go and back, with extra for unexpected delays.
- It is recommended you have a VHF marine radio, cell phone, and GPS unit on board. In the event of an emergency, you can call for help and give your position.
- Have current tables and readily available charts on board.
- Always keep a lookout and make sure your navigation lights are working.
- Know and follow the Navigation Rules.

Additional safe boating information at:  
<http://www.uscgboating.org>

U.S. Coast Guard Auxiliary Course:  
1-800-336-BOAT



## **U.S. COAST GUARD SECTOR MIAMI**

### **OPERATION CLEAR CHANNEL**

### **Port Everglades**



**Additional information is  
available online in the  
Captain of the Port, Miami  
Directory at:**

<http://homeport.uscg.mil>



**United States Coast Guard**  
U.S. Department of Homeland Security

**PURPOSE:**

- (1) A U.S. Coast Guard initiative to keep the channels clear for commercial traffic and cruise ships
- (2) An educational tool used to inform recreational boaters of their responsibility not to impede the channel

**FOR YOUR PROTECTION:**

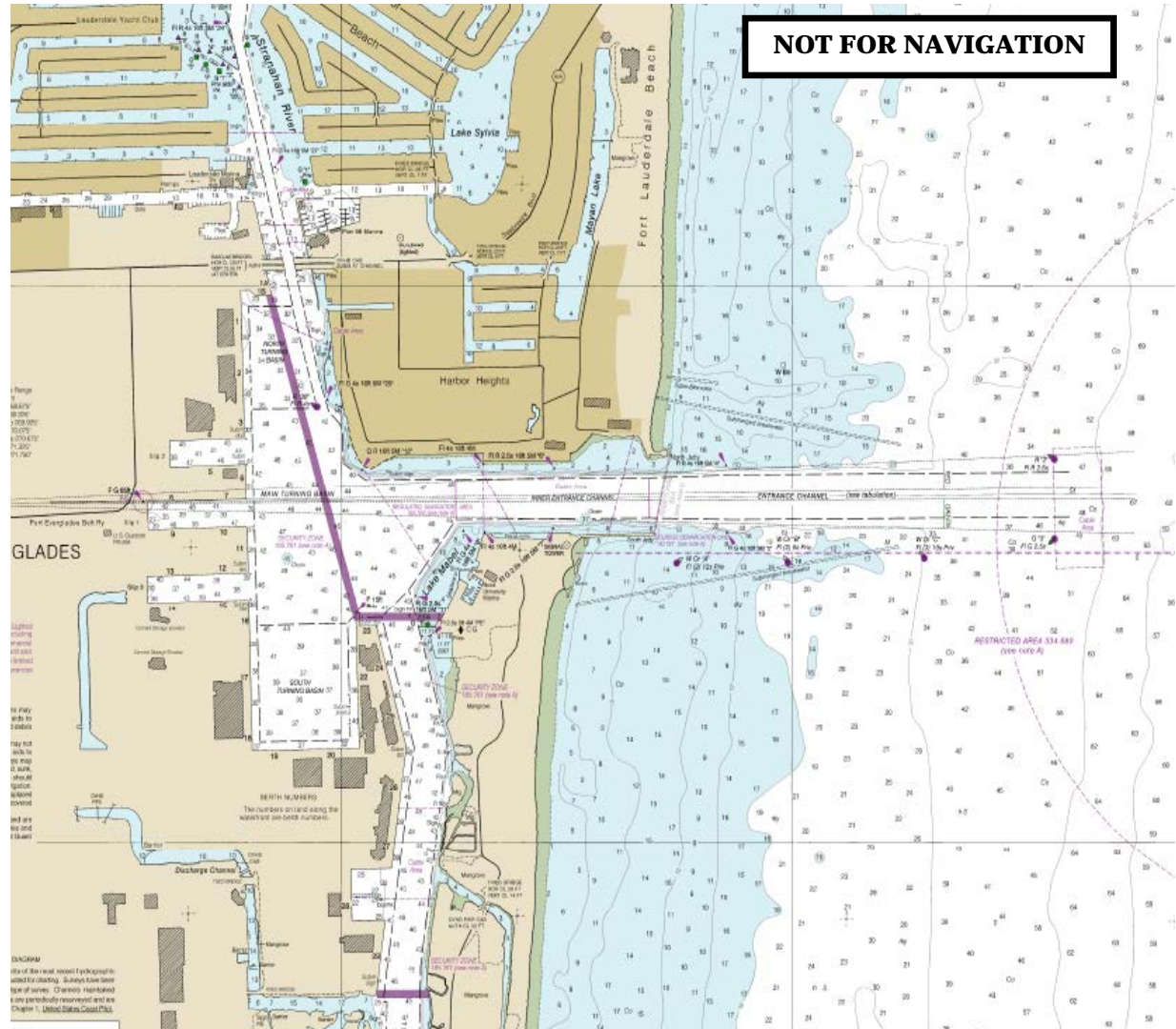
Large ships must remain in the ship channels due to their deep draft and they must maintain speed to steer. Leave plenty of room for large ships to transit safely through a channel.

**APPLICABLE PORTS:**

PORT OF MIAMI  
PORT OF PALM BEACH  
PORT EVERGLADES

**IT'S THE LAW! NAVIGATION RULE #9 STATES:**

- (a) "A vessel of less than 20 meters in length or a sailing vessel shall not impede the passage of a vessel that can safely navigate only within a narrow channel or fairway."
- (b) "A vessel engaged in fishing shall not impede the passage of any other vessel navigating within a narrow channel or fairway."



***Large ships must remain in the channel due to their deep draft. Stay out of these channels and leave plenty of room for them to transit safely.***