



**Broward County Board of County Commissioners  
Port Everglades Department  
November 2014  
Revenue and Activity Reports (unaudited)**



**Prepared by the Finance Division**

# TABLE OF CONTENTS

<b><u>REVENUE VARIANCE SUMMARY .....</u></b>	<b><u>1</u></b>
<b><u>REVENUE REPORT DASHBOARD.....</u></b>	<b><u>3</u></b>
<b><u>REVENUE REPORTS BY REVENUE CENTER .....</u></b>	<b><u>4</u></b>
REVENUE VS. PRIOR YEAR ACTUAL .....	5
REVENUE VS. BUDGET .....	6
<b><u>PETROLEUM REVENUE REPORTS .....</u></b>	<b><u>7</u></b>
REVENUE VS. PRIOR YEAR ACTUAL .....	8
REVENUE VS. BUDGET .....	9
PETROLEUM THROUGHPUT REPORT .....	10
PETROLEUM THROUGHPUT- DOMESTIC VS. FOREIGN .....	12
<b><u>CONTAINER REVENUE REPORTS.....</u></b>	<b><u>13</u></b>
REVENUE VS. PRIOR YEAR ACTUAL .....	14
REVENUE VS. BUDGET .....	15
CONTAINER OPERATOR THROUGHPUT .....	16
TERMINAL OPERATORS MINIMUM GUARANTEE .....	17
MONTHLY LOADED TEUS .....	18
<b><u>CRUISE REVENUE REPORTS.....</u></b>	<b><u>19</u></b>
REVENUE VS. PRIOR YEAR ACTUAL .....	20
REVENUE VS. BUDGET .....	21
CRUISE OPERATORS MINIMUM GUARANTEE .....	22
<b><u>BULK &amp; BREAK BULK REVENUE REPORTS.....</u></b>	<b><u>23</u></b>
BULK & BREAK BULK REVENUE REPORTS .....	24
REVENUE VS. BUDGET .....	25
<b><u>REAL ESTATE REVENUE REPORTS .....</u></b>	<b><u>26</u></b>
REVENUE VS. PRIOR YEAR ACTUAL .....	27
REVENUE VS. BUDGET .....	29
<b><u>OTHER REVENUE CENTER REPORTS.....</u></b>	<b><u>31</u></b>
REVENUE VS. PRIOR YEAR ACTUAL .....	32
REVENUE VS. BUDGET .....	33

**PORT EVERGLADES DEPARTMENT  
FINANCE DIVISION**

**Date:** January 8, 2015

**To:** Steven Cernak, Chief Executive & Port Director  
Glenn A. Wiltshire, Deputy Port Director  
David Anderton, Assistant Director of Strategic Planning and Development  
Paul Stanton, Assistant to the Port Director – Petroleum  
Robert J. Flint, Director of Operations  
Jorge Hernandez, Director of Business Administration  
Jim Pyburn, Director of Business Development

**From:** Leah Brasso, Director of Finance 

**Subject:** November 2014 Revenue Variance Summary (Unaudited)

This report includes the Revenue Report Dashboard and Revenue Reports by Revenue Center, as well as detail reports for Petroleum, Container, Cruise, Bulk & Break Bulk, Real Estate, and Other Revenue Centers.

Operating revenues through November totaled \$25,917,842, which represents a year-over-year increase of \$1,880,268, or 8%. After consultation with Port management, a summary of negative variances and variances over 5% are as follows:

**Cruise** – Cruise revenues through November decreased year-over-year by a total of (\$296,555), or (3%). As in the previous month, this decrease was primarily due to the dry docking of Royal Caribbean’s *Oasis of the Seas* in Europe for the month of October. Additionally, revenues from Port User Charges from Royal Caribbean decreased due to the removal of the Capital Cost Recovery Charge from the rate effective January 1, 2014. The year-over-year cumulative impact of these events on Port revenues from Royal Caribbean was (\$1,594,821). This decrease was partially offset by an overall increase in passenger volumes for both multi-day and daily cruises of 24%.

**Containerized Cargo** – Containerized cargo revenues through November increased year-over-year by a total of \$700,319, or 12%. This was primarily due to three Terminal Operators (Crowley, King Ocean, and MSC) exceeding contractually guaranteed minimums which were subject to excess box charges totaling \$1,052,838. The year-over-year increases in excess box charges billed for these three Terminal Operators was \$374,323, \$340,906, and \$337,609 for Crowley, King Ocean, and MSC respectively. The additional revenue from excess box charges was partially offset by decreases in cargo wharfage revenues of (\$280,022) and crane rental revenues of (\$105,167) as a result of an overall decrease in ship calls of (8%).

**Petroleum** – Petroleum revenues through November increased year-over-year by a total of \$325,168, or 7%. As in the previous month, in addition to a 3% tariff increase and the new fire suppression fees which went into effect on October 1, 2014, this increase was also due to an overall year-over-year volume increase in petroleum barrels of 291,355, or 2%.

**Real Estate** – Real Estate revenues through November increased year-over-year by a total of \$176,238, or 8%. This increase was primarily due to increases in the appraised values of land leased by Chiquita and MSC pursuant to the applicable lease agreements, as well as the expansion of King Ocean in Midport.

**Midport Parking Garage** – Parking revenues through November for the Midport Garage increased year-over-year by a total of \$297,692, or 44%. As in the previous month, this was primarily due to an increase in the number of shorter-term cruises which has a positive impact on the number of passengers choosing to park at the Port.

**Northport Parking Garage** – Parking revenues through November for the Northport Garage increased year-over-year by a total of \$140,848, or 37%. As in the previous month, and like the Midport Garage, this variance was primarily due to an increase in the number of shorter-term cruises which has a positive impact on the number of passengers choosing to park at the Port. The Northport Garage was additionally impacted by the early arrival of the Caribbean Princess, which arrived at Port Everglades at the end of September instead of its usual arrival in the middle of October. In addition, the switching of ship berths from Northport to Midport had a positive impact on the number of passengers parking at Northport.

**Break Bulk** – Break Bulk revenues through November increased year-over-year by a total of \$287,316, or 58%. This increase was primarily due to increases in steel imports.

**Bulk** – Bulk revenues through November increased year-over-year by a total of \$101,712, or 35%. This increase was primarily due to increases in cement imports.

**Lay-In (Including Navy)** – Lay-in revenues through November increased year-over-year by \$131,086, or 71%. As in the previous month, this variance is primarily due to the vessel *Wasaborg* which was billed for lay-in status for an 86 day period from August 3, 2014 through October 29, 2014. The total dollar value of this single billing was \$122,566.

**BROWARD COUNTY BOARD OF COUNTY COMMISSIONERS  
PORT EVERGLADES DEPARTMENT  
REVENUE REPORT DASHBOARD  
NOVEMBER 2014**

FISCAL PERIOD	MONTH	YEAR TO DATE		YTD
	November-14	November-14	November-13	% Change
<b>TOTAL OPERATING REVENUE</b>	\$ 15,648,241	\$ 25,917,842	\$ 24,037,574	8%
Cruise	\$ 6,330,850	\$ 8,838,137	\$ 9,134,692	(-3%)
Containerized Cargo	\$ 3,747,429	\$ 6,570,069	\$ 5,869,750	12%
Petroleum	\$ 2,369,790	\$ 4,861,558	\$ 4,536,390	7%
Real Estate	\$ 1,247,452	\$ 2,488,141	\$ 2,311,903	8%
Midport Garage	\$ 743,433	\$ 968,845	\$ 671,153	44%
Northport Garage	\$ 315,675	\$ 523,761	\$ 382,913	37%
Break Bulk	\$ 449,032	\$ 780,386	\$ 493,070	58%
Bulk	\$ 242,913	\$ 391,319	\$ 289,607	35%
Lay-In (Includes Navy)	\$ 118,345	\$ 314,998	\$ 183,912	71%
Finance	\$ 11,070	\$ 23,061	\$ 19,055	21%
Foreign Trade Zone	\$ 52,918	\$ 113,696	\$ 115,319	(-1%)
Rail Revenues (Ethanol - FEC/Motiva)	\$ -	\$ -	\$ -	N/A
Public Safety Services	\$ 19,334	\$ 43,871	\$ 29,810	47%
<b>TOTAL SHIP CALLS</b>	<b>362</b>	<b>668</b>	<b>659</b>	<b>1%</b>
Cruise Ships - Multi Day	81	115	93	24%
Cruise Ships - Daily	26	52	30	73%
Container Ships	141	294	321	(-8%)
Cargo Ships	24	46	31	48%
Petroleum Vessels - Barges	13	37	40	(-8%)
Petroleum Vessels - Tankers	29	45	50	(-10%)
Other (Other Tugs, Bunkers, Repairs)	48	79	94	(-16%)
<b>TOTAL CRUISE PASSENGERS</b>	<b>479,284</b>	<b>669,862</b>	<b>538,050</b>	<b>24%</b>
Cruise Ships - Multi Day	468,153	649,861	526,505	23%
Cruise Ships - Daily	11,131	20,001	11,545	73%
<b>TOTAL CONTAINERIZED CARGO (tons) *</b>	<b>566,851</b>	<b>1,093,101</b>	<b>1,038,311</b>	<b>5%</b>
<b>TOTAL BULK &amp; BREAK BULK (tons) *</b>	<b>143,907</b>	<b>243,141</b>	<b>182,288</b>	<b>33%</b>
<b>TOTAL TEUs</b>	<b>91,801</b>	<b>178,475</b>	<b>162,181</b>	<b>10%</b>
TEUs Empty-Inbound	18,940	37,258	33,784	10%
TEUs Empty-Outbound	6,145	12,828	10,976	17%
<b>Total TEUs Empty</b>	<b>25,085</b>	<b>50,086</b>	<b>44,760</b>	<b>12%</b>
TEUs Loaded-Inbound	26,091	49,520	48,760	2%
TEUs Loaded-Outbound	40,625	78,869	68,661	15%
<b>Total TEUs Loaded</b>	<b>66,716</b>	<b>128,389</b>	<b>117,421</b>	<b>9%</b>
ICTF - Domestic Cargo Billable Revenue	\$ 12,366	\$ 23,167	\$ -	N/A
ICTF - Domestic Cargo (Billable)	3,533	6,619	-	N/A
ICTF - International/Railroad Cargo (Non-Billable)	5,185	9,917	-	N/A
<b>TOTAL PETROLEUM (Barrels)</b>	<b>8,351,475</b>	<b>17,520,362</b>	<b>17,229,007</b>	<b>2%</b>
Petroleum - (Waterborne Barrels)	7,916,811	16,666,841	16,524,972	1%
Petroleum - (Truck & Rail Barrels)	434,664	853,521	704,035	21%
Petroleum - Percentage Domestic	77%	77%	80%	(-4%)
<b>Accounts Receivable - Percentage Current</b>	<b>96.0%</b>	<b>96.0%</b>	<b>99.7%</b>	<b>(-4%)</b>

\*Tonnage is measured in 2,000-pound short tons.

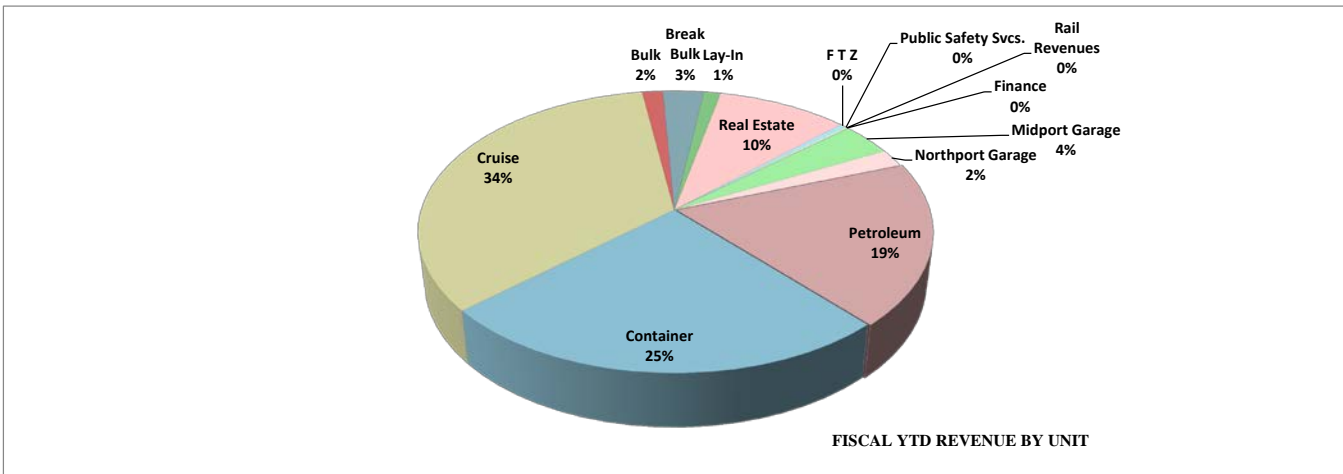
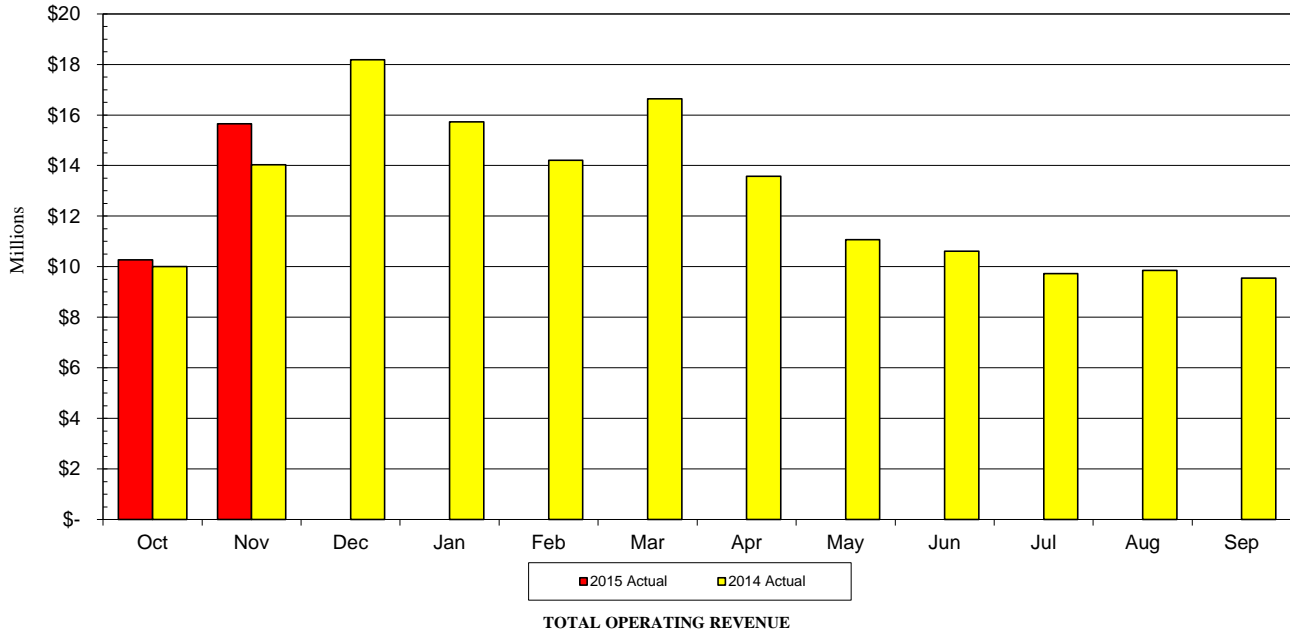
# **Revenue Reports By Revenue Center**

# PORT EVERGLADES DEPARTMENT

## FISCAL YEAR 2015 REVENUE TO FISCAL YEAR 2014 REVENUE REPORT

NOVEMBER 2014

FISCAL MONTH			F Y T D					
<u>2015 Actual</u>	<u>2014 Actual</u>	<u>Variance</u>			<u>2015 Actual</u>	<u>2014 Actual</u>	<u>Variance</u>	<u>% Inc/(Dcr)</u>
\$2,369,790	\$2,369,996	(\$206)	1010	Petroleum	\$4,861,558	\$4,536,390	\$325,168	7%
3,747,429	3,268,264	479,165	1015	Container	6,570,069	5,869,750	700,319	12%
6,330,850	6,105,330	225,520	1020	Cruise	8,838,137	9,134,692	(296,555)	(-3%)
242,913	114,211	128,702	1025	Bulk	391,319	289,607	101,712	35%
449,032	110,412	338,620	1030	Break Bulk	780,386	493,070	287,316	58%
118,345	143,866	(25,521)	1045	Lay-In	314,998	183,912	131,086	71%
1,247,452	1,116,144	131,308	1050	Real Estate	2,488,141	2,311,903	176,238	8%
52,918	56,466	(3,548)	1055	F T Z	113,696	115,319	(1,623)	(-1%)
19,334	13,248	6,086	1060	Public Safety Svcs.	43,871	29,810	14,061	47%
0	0	0	2060	Rail Revenues	0	0	0	0%
11,070	8,317	2,753	3000	Finance	23,061	19,055	4,006	21%
743,433	474,385	269,048	2010	Midport Garage	968,845	671,153	297,692	44%
<u>315,675</u>	<u>250,392</u>	<u>65,283</u>	2020	Northport Garage	<u>523,761</u>	<u>382,913</u>	<u>140,848</u>	<u>37%</u>
<b><u>\$15,648,241</u></b>	<b><u>\$14,031,031</u></b>	<b><u>\$1,617,210</u></b>	<b>TOTAL OPERATING REVENUE</b>		<b><u>\$25,917,842</u></b>	<b><u>\$24,037,574</u></b>	<b><u>\$1,880,268</u></b>	<b><u>8%</u></b>

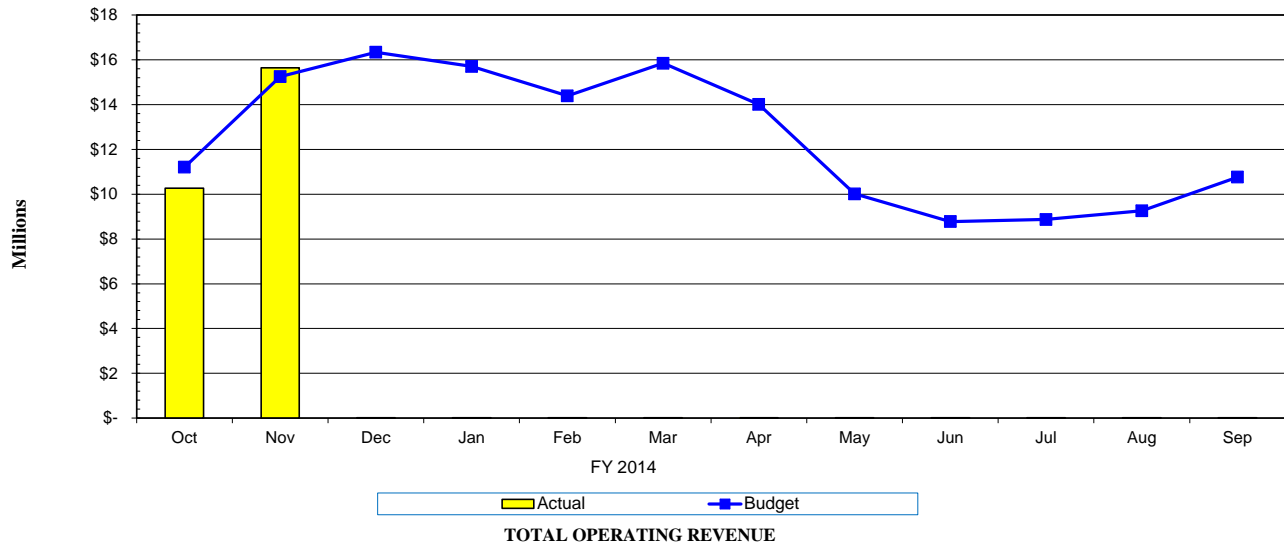


# PORT EVERGLADES DEPARTMENT

## FISCAL YEAR 2015 REVENUE TO BUDGET REPORT

### NOVEMBER 2014

FISCAL MONTH				FYTD				
<u>Actual</u>	<u>Budget</u>	<u>Variance</u>		<u>Actual</u>	<u>Budget</u>	<u>Variance</u>	<u>% Inc/(Dcr)</u>	
\$2,369,790	\$2,470,707	(\$100,917)	1010	Petroleum	\$4,861,558	\$4,941,414	(\$79,856)	(-2%)
3,747,429	2,723,967	1,023,462	1015	Container	6,570,069	5,713,634	856,435	15%
6,330,850	7,697,400	(1,366,550)	1020	Cruise	8,838,137	11,089,200	(2,251,063)	(-20%)
242,913	114,100	128,813	1025	Bulk	391,319	289,400	101,919	35%
449,032	112,000	337,032	1030	Break Bulk	780,386	489,900	290,486	59%
118,345	86,642	31,703	1045	Lay-In	314,998	173,284	141,714	82%
1,247,452	1,170,108	77,344	1050	Real Estate	2,488,141	2,510,666	(22,525)	(-1%)
52,918	108,700	(55,782)	1055	F T Z	113,696	162,100	(48,404)	(-30%)
19,334	14,000	5,334	1060	Public Safety Svcs.	43,871	28,000	15,871	57%
0	0	0	2060	Rail Revenues	0	0	0	-
11,070	12,500	(1,430)	3000	Finance	23,061	25,000	(1,939)	(-8%)
743,433	480,400	263,033	2010	Midport Garage	968,845	655,300	313,545	48%
<u>315,675</u>	<u>265,300</u>	<u>50,375</u>	2020	Northport Garage	<u>523,761</u>	<u>390,300</u>	<u>133,461</u>	<u>34%</u>
<b><u>\$15,648,241</u></b>	<b><u>\$15,255,824</u></b>	<b><u>\$392,417</u></b>	<b>TOTAL OPERATING REVENUE</b>		<b><u>\$25,917,842</u></b>	<b><u>\$26,468,198</u></b>	<b><u>(\$550,356)</u></b>	<b><u>(-2%)</u></b>





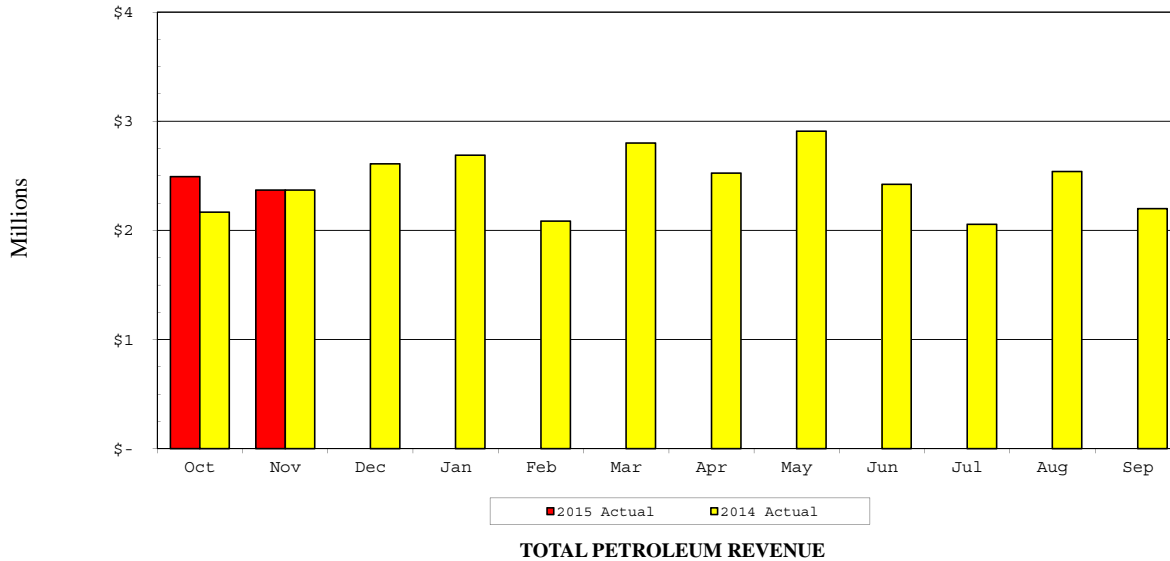
# **Petroleum Revenue Reports**

# PORT EVERGLADES DEPARTMENT

## FISCAL YEAR 2015 REVENUE TO FISCAL YEAR 2014 REVENUE REPORT

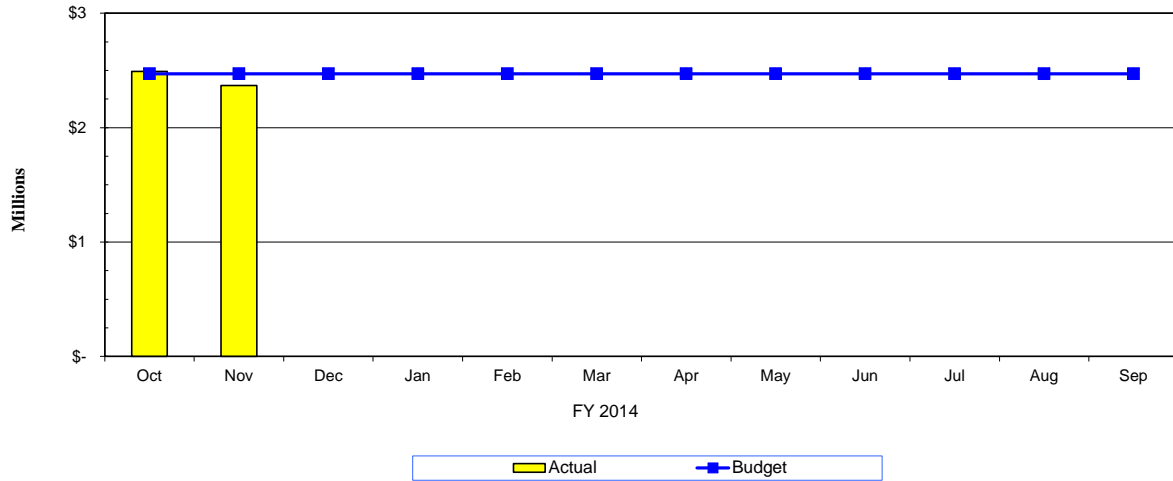
NOVEMBER 2014

FISCAL MONTH			F Y T D					
<u>2015 Actual</u>	<u>2014 Actual</u>	<u>Variance</u>			<u>2015 Actual</u>	<u>2014 Actual</u>	<u>Variance</u>	
			1010 <b>Petroleum</b>					
\$1,268,273	\$1,320,377	(\$52,104)	4511	Cargo Wharfage	\$2,666,794	\$2,568,448	\$98,346	
104,260	208,034	(103,774)	4517	Fire Protection Service	405,705	404,682	1,023	
72,021	76,288	(4,267)	4522	Security Fees	146,378	147,418	(1,040)	
122,315	128,033	(5,718)	4525	Truck & Rail Whfg	240,181	195,360	44,821	
512,245	517,691	(5,446)	4531	Dockage	993,119	991,959	1,160	
22,868	23,591	(723)	4541	Harbormaster	44,378	50,455	(6,077)	
51,220	55,673	(4,453)	4542	Linehandlers	99,201	104,062	(4,861)	
37,458	36,689	769	4543	Tug Fees	70,307	66,030	4,277	
614	0	614	4572	Penalties	11,837	3,474	8,363	
3,312	3,620	(308)	4581	Fresh Water	8,454	4,502	3,952	
0	0	0	4583	Sewage Disposal	0	0	0	
0	0	0	4589	Reimburse Labor	0	0	0	
<u>175,204</u>	<u>0</u>	<u>175,204</u>	6310	Special Assessment	<u>175,204</u>	<u>0</u>	<u>175,204</u>	
<b><u>\$2,369,790</u></b>	<b><u>\$2,369,996</u></b>	<b><u>(\$206)</u></b>	<b>Total Petroleum Revenue</b>		<b><u>\$4,861,558</u></b>	<b><u>\$4,536,390</u></b>	<b><u>\$325,168</u></b>	



**PORT EVERGLADES DEPARTMENT  
FISCAL YEAR 2015 REVENUE TO BUDGET REPORT  
NOVEMBER 2014**

FISCAL MONTH			F Y T D				
<u>Actual</u>	<u>Budget</u>	<u>Variance</u>			<u>Actual</u>	<u>Budget</u>	<u>Variance</u>
1010 Petroleum							
\$1,268,273	\$1,401,420	(\$133,147)	4511	Cargo Wharfage	\$2,666,794	\$2,802,840	(\$136,046)
104,260	312,507	(208,247)	4517	Fire Protection Service	405,705	625,014	(219,309)
72,021	72,100	(79)	4522	Security Fees	146,378	144,200	2,178
122,315	117,220	5,095	4525	Truck & Rail Whfg.	240,181	234,440	5,741
512,245	469,600	42,645	4531	Dockage	993,119	939,200	53,919
22,868	23,900	(1,032)	4541	Harbormaster	44,378	47,800	(3,422)
51,220	49,960	1,260	4542	Linehandlers	99,201	99,920	(719)
37,458	22,000	15,458	4543	Tug Fees	70,307	44,000	26,307
614	0	614	4572	Penalties	11,837	0	11,837
3,312	2,000	1,312	4581	Fresh Water	8,454	4,000	4,454
0	0	0	4583	Sewage Disposal	0	0	0
0	0	0	4589	Reimburse Labor	0	0	0
<u>175,204</u>	<u>0</u>	<u>175,204</u>	6310	Special Assessment	<u>175,204</u>	<u>0</u>	<u>175,204</u>
<b><u>\$2,369,790</u></b>	<b><u>\$2,470,707</u></b>	<b><u>(\$100,917)</u></b>	<b>Total Petroleum Revenue</b>		<b><u>\$4,861,558</u></b>	<b><u>\$4,941,414</u></b>	<b><u>(\$79,856)</u></b>



**PORT EVERGLADES**  
**Petroleum Throughput - Operator Report**  
**FYTD Summary**  
**Fiscal Year 2015**  
**November 2014**

TERMINAL	Barrels of Petroleum												Total Bbls	Total Bbls
	Oct	Nov	Dec	Jan	Feb	Mar	Apr	May	Jun	Jul	Aug	Sep	FYTD 2015	FYTD 2014
Amoco Oil Co	244,290	258,968											503,258	698,751
Chevron USA	888,514	615,512											1,504,026	2,258,119
Citgo/Champlin	121,373	78,035											199,408	142,572
Citgo Petroleum Corp	808,117	583,255											1,391,372	1,128,619
High Sierra Terminaling	31,747	-											31,747	-
Buckeye (MABU)	270,038	244,524											514,562	772,166
Marathon Oil Co Eisenhower (MARO)	698,485	639,586											1,338,071	1,773,345
Marathon Oil Co Spangler (Mant)	798,499	641,250											1,439,749	1,672,531
SemGroup LP													-	-
Mobil Oil Corp	744,901	1,045,161											1,790,062	1,483,880
Motiva Terminal South	683,524	274,256											957,780	276,126
Motiva Enterprises East	1,548,666	1,230,541											2,779,208	2,379,019
Valero Marketing & Supply Co.	1,485,710	1,432,346											2,918,056	2,181,124
Targa Midstream Svcs	17,310	-											17,310	17,765
Transmontaigne Products (N)	616,814	1,180,610											1,797,424	2,147,334
Transmontaigne Product Svc	210,901	127,430											338,331	297,654
<b>Port Wide Total Barrels</b>	<b>9,168,887</b>	<b>8,351,475</b>	-	-	-	-	-	-	-	-	-	-	<b>17,520,362</b>	<b>17,229,007</b>

**PORT EVERGLADES**  
**Petroleum Throughput - Product Report**  
**FYTD Summary**  
**Fiscal Year 2015**  
**November 2014**

PRODUCT	Barrels of Petroleum											Total Bbls	Total Bbls	
	Oct	Nov	Dec	Jan	Feb	Mar	Apr	May	Jun	Jul	Aug	Sep	FYTD 2015	FYTD 2014
Asphalt	31,747	35,718											67,465	107,055
Aviation Gasoline	24,001												24,001	42,122
Bio-diesel	-	-											-	-
Crude Oil Loaded	-	91,437											91,437	195,444
Diesel Fuel	1,093,100	1,022,396											2,115,496	2,017,749
Ethanol	207,843	110,154											317,997	100,118
Fuel Oil	73,447	311,849											385,296	851,884
Gasoline	4,663,955	4,256,930											8,920,886	9,474,188
Jet Fuel	2,638,627	2,088,326											4,726,953	3,718,646
Propane	17,310	-											17,310	17,765
Truck & Rail WHF-Ethanol	418,857	434,664											853,521	704,035
<b>Grand Total**</b>	<b>9,168,887</b>	<b>8,351,475</b>	-	-	-	-	-	-	-	-	-	-	<b>17,520,362</b>	<b>17,229,007</b>

**Petroleum Throughput - Domestic vs. Foreign  
FYTD - November 2014**

<b>Commodity Code</b>	<b>Commodity Name</b>	<b>Domestic Barrels</b>	<b>Domestic %</b>	<b>Foreign Barrels</b>	<b>Foreign %</b>	<b>Total Barrels</b>
PE00	WHARFAGE ASPHALT	35,718	53	31,747	47	67,465
PE01	WHARFAGE AVGAS	24,001	100	-	-	24,001
PE02	WHARFAGE DIESEL	2,115,496	100	-	-	2,115,496
PE03	WHARFAGE FUEL OIL	90,729	24	294,567	76	385,296
PE04	WHARFAGE GASOLINE	8,637,295	97	283,591	3	8,920,886
PE05	WHARFAGE JET FUEL	1,331,179	28	3,395,774	72	4,726,953
PE09	WHARFAGE PROPANE	17,310	100	-	-	17,310
PE13	WHARFAGE CRUDE OIL (LOADED)	91,437	100	-	-	91,437
PE14	WHARFAGE ETHANOL	317,997	100	-	-	317,997
PTR1	TRUCK & RAIL - ETHANOL	853,521	100	-	-	853,521
<b>TOTALS</b>		<b>13,514,683</b>	<b>77%</b>	<b>4,005,679</b>	<b>23%</b>	<b>17,520,362</b>

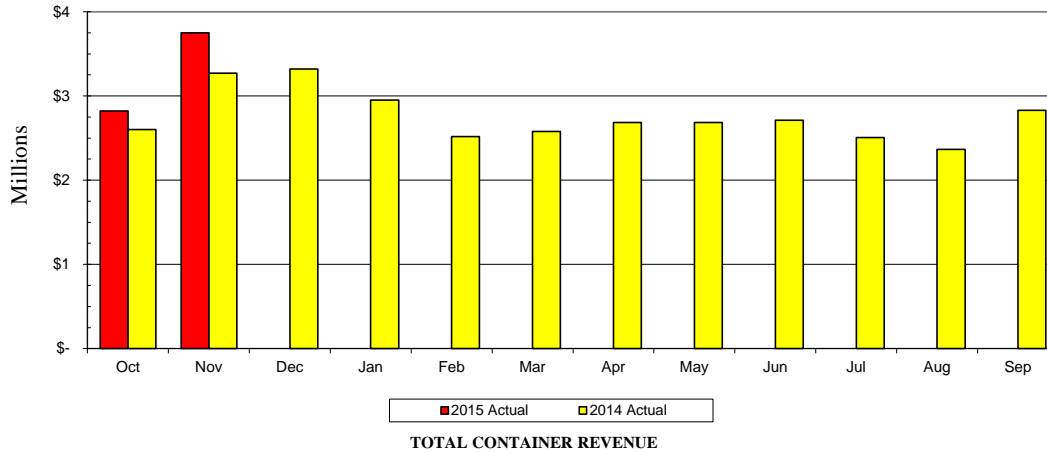
# **Container Revenue Reports**

# PORT EVERGLADES DEPARTMENT

## FISCAL YEAR 2015 REVENUE TO FISCAL YEAR 2014 REVENUE REPORT

NOVEMBER 2014

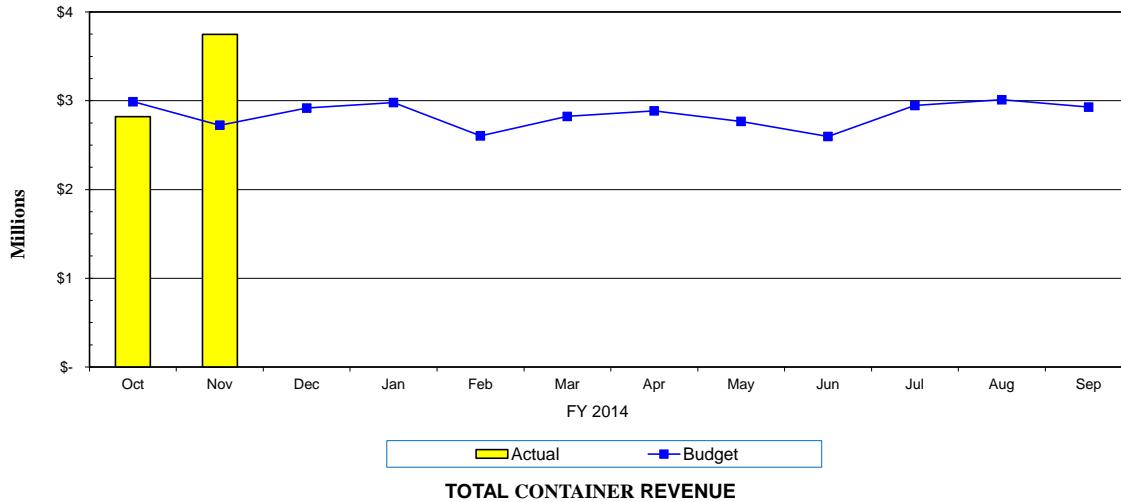
FISCAL MONTH			F Y T D				
<u>2015 Actual</u>	<u>2014 Actual</u>	<u>Variance</u>			<u>2015 Actual</u>	<u>2014 Actual</u>	<u>Variance</u>
			1015	<b>Container</b>			
\$166,841	\$295,524	(\$128,683)	4511	Cargo Wharfage	\$400,931	\$680,953	(\$280,022)
20,076	31,717	(11,641)	4512	Box Wharfage	46,962	64,528	(17,566)
(42)	(95)	53	4519	Whrg. Vol. Incentives	(314)	(413)	99
1,450,835	1,362,263	88,572	4520	Minimum Payments	2,896,413	2,717,563	178,850
1,407,408	669,709	737,699	4521	Terminal Oper. Revenues	1,760,768	707,930	1,052,838
225,726	216,947	8,779	4522	Security Fees	442,720	414,250	28,470
69,332	143,732	(74,400)	4531	Dockage	159,688	256,738	(97,050)
0	0	0	4539	Dockage Vol. Incentives	0	0	0
10,454	15,816	(5,362)	4541	Harbormaster	24,322	31,243	(6,921)
169,187	180,859	(11,672)	4542	Linehandlers	345,906	348,286	(2,380)
33,023	47,364	(14,341)	4543	Tug Fees	68,698	82,485	(13,787)
0	0	0	4551	Storage	0	0	0
0	0	0	4552	Demurrage	0	0	0
86,370	91,956	(5,586)	4553	Grid Rental	172,740	184,636	(11,896)
107,730	200,108	(92,378)	4566	Crane Rental	234,555	339,722	(105,167)
0	0	0	4568	Crane/Heavy Lift	0	0	0
(11,195)	(7,032)	(4,163)	4569	Crane Vol. Incentives	(20,444)	(15,368)	(5,076)
1,502	2,356	(854)	4572	Penalties	5,378	13,689	(8,311)
8,844	8,575	269	4581	Fresh Water	17,908	18,871	(963)
0	0	0	4583	Sewage Disposal	0	0	0
1,338	7,965	(6,627)	4587	Reefer Electricity	1,338	11,387	(10,049)
0	0	0	4588	Reimb. Electricity	0	0	0
0	0	0	4589	Reimburse Labor	0	0	0
0	0	0	4601	Marketing Fees	12,500	12,500	0
0	500	(500)	6990	Misc. Revenue	0	750	(750)
<b><u>\$3,747,429</u></b>	<b><u>\$3,268,264</u></b>	<b><u>\$479,165</u></b>		<b>Total Container Revenue</b>	<b><u>\$6,570,069</u></b>	<b><u>\$5,869,750</u></b>	<b><u>\$700,319</u></b>





**PORT EVERGLADES DEPARTMENT  
FISCAL YEAR 2015 REVENUE TO BUDGET REPORT  
NOVEMBER 2014**

FISCAL MONTH			FYTD				
Actual	Budget	Variance	1015 Container		Actual	Budget	Variance
\$166,841	\$283,200	(\$116,359)	4511	Cargo Wharfage	\$400,931	\$660,500	(\$259,569)
20,076	32,120	(12,044)	4512	Box Wharfage	46,962	65,440	(18,478)
(42)	(150)	108	4519	Whrg. Vol. Incentives	(314)	(500)	186
1,450,835	1,507,320	(56,485)	4520	Minimum Payments	2,896,413	3,007,640	(111,227)
1,407,408	0	1,407,408	4521	Terminal Oper Revenues	1,760,768	300,000	1,460,768
225,726	215,000	10,726	4522	Security Fees	442,720	410,800	31,920
69,332	126,420	(57,088)	4531	Dockage	159,688	226,240	(66,552)
0	0	0	4539	Dockage Vol. Incentives	0	0	0
10,454	14,300	(3,846)	4541	Harbormaster	24,322	28,500	(4,178)
169,187	179,810	(10,623)	4542	Linehandlers	345,906	347,220	(1,314)
33,023	47,400	(14,377)	4543	Tug Fees	68,698	82,500	(13,802)
0	0	0	4551	Storage	0	0	0
0	0	0	4552	Demurrage	0	0	0
86,370	108,390	(22,020)	4553	Grid Rental	172,740	217,480	(44,740)
107,730	197,500	(89,770)	4566	Crane Rental	234,555	334,500	(99,945)
0	0	0	4568	Crane-Heavy Lift	0	0	0
(11,195)	(6,100)	(5,095)	4569	Crane Vol. Incentives	(20,444)	(13,600)	(6,844)
1,502	1,167	335	4572	Penalties	5,378	2,334	3,044
8,844	8,930	(86)	4581	Fresh Water	17,908	19,560	(1,652)
0	0	0	4583	Sewage Disposal	0	0	0
1,338	8,160	(6,822)	4587	Reefer Electricity	1,338	11,720	(10,382)
0	0	0	4588	Reimburse Electric	0	0	0
0	0	0	4589	Reimburse Labor	0	0	0
0	0	0	4601	Marketing Fees	12,500	12,500	0
0	500	(500)	4544	Other Revenue	0	800	(800)
<b>\$3,747,429</b>	<b>\$2,723,967</b>	<b>\$1,023,462</b>	<b>Total Container Revenue</b>		<b>\$6,570,069</b>	<b>\$5,713,634</b>	<b>\$856,435</b>



**PORT EVERGLADES**  
**Container Operator Throughput**  
**Fiscal Year 2015**  
**FYTD Summary**  
**November 2014**

OPERATOR	TEUs		Tons		FY 2015 ACRES			Avg. Mthly TEUs/Acre		Avg. Mthly Tons/Acre	
	FYTD 2015	FYTD 2014	FYTD 2015	FYTD 2014	Leased	Grid	Total	FYTD 2015	FYTD 2014	FYTD 2015	FY 2014
Chiquita Brands Company	3,707	10,958	29,197	86,230	13.10	-	13.10	141.5	418.2	1,114.4	3,291.2
Coleary Transport Co., Inc.	297	-	2,316	-	-	2.80	2.80	53.0	-	413.6	-
Crowley Liner Services	57,053	44,257	329,017	258,792	74.00	-	74.00	385.5	276.6	2,223.1	1,617.5
Dole Fresh Fruits	1,912	2,762	9,728	15,643	5.34	-	5.34	179.0	258.6	910.9	1,464.7
Florida International Terminal	25,798	25,809	167,053	202,550	36.03	5.00	41.03	314.4	314.5	2,035.7	2,468.3
Florida Transportation Services	35	132	16	397	-	2.00	2.00	-	57.9	-	174.1
Hyde Shipping	9,271	6,003	39,842	26,663	7.00	-	7.00	662.2	428.8	2,845.9	1,904.5
King Ocean Services, LTD (Cayman Islands) Inc.	28,335	26,248	132,576	116,903	41.15	5.10	46.25	306.3	337.0	1,433.3	1,501.1
Port Everglades Terminal	33,435	24,993	280,349	216,774	39.18	-	39.18	426.7	319.0	3,577.7	2,766.4
Portus - PEV LLC	3,932	7,291	29,100	43,821	-	9.08	9.08	216.5	163.0	1,590.1	979.5
Sea Star Line	-	1,864	-	11,727	-	-	-	-	133.1	-	837.6
Seafreight Line	13,219	11,864	63,916	58,769	25.00	-	25.00	264.4	237.3	1,392.2	1,175.4
Sol Shipping Services, Inc.	1,481	-	9,991	-	5.34	-	5.34	138.7	-	935.5	-
Unassigned	-	-	-	42	-	-	-	-	-	-	-
<b>Grand Total</b>	<b>178,475</b>	<b>162,181</b>	<b>1,093,101</b>	<b>1,038,311</b>	<b>246.14</b>	<b>23.98</b>	<b>270.12</b>	<b>330.4</b>	<b>284.1</b>	<b>2,023.4</b>	<b>1,818.8</b>

**PORT EVERGLADES****Terminal Operators Minimum Guarantee for Contract Year to Date****November 2014**

<b>OPERATOR</b>	<b>Next Contract Year End</b>	<b>Minimum Guaranteed units</b>	<b>Minimum Guaranteed Amount</b>	<b>Tier</b>	<b>Contract YTD November-14 Amount</b>
Crowley Liner Services	12/31/2014	Containers	114,000 119,700	Tier 1 Tier 2	133,098
Florida International Terminal	7/7/2015	Containers	75,000		37,394
King Ocean Services, LTD (Cayman Islands) Inc.	1/31/2015	Containers	60,000 72,000	Tier 1 Tier 2	85,757
Mediterranean Shipping Company	10/31/2015	Containers	75,000		11,698
Seafreight Agencies USA	5/31/2015	Containers	46,305		20,387
Chiquita Fresh North America	9/30/2015	Tons	262,000		29,198
Dole Fresh Fruits	8/31/2015	Tons	106,800		15,529
Hyde Shipping	6/30/2015	Tons	140,000		69,564
Sol Shipping Services, Inc. (Agrix)	10/31/2015	Tons	133,500		9,991

**Port Everglades Department of Broward County  
Monthly Loaded TEUs Report**

		<b>Fiscal Year 2015</b>												<b>TOTAL</b>
		<b>OCT</b>	<b>NOV</b>	<b>DEC</b>	<b>JAN</b>	<b>FEB</b>	<b>MAR</b>	<b>APR</b>	<b>MAY</b>	<b>JUN</b>	<b>JUL</b>	<b>AUG</b>	<b>SEP</b>	
<b>Inbound</b>	<b>Empty</b>	18,318	18,940											37,258
	<b>Loaded</b>	<u>23,429</u>	<u>26,091</u>											<u>49,520</u>
<b>Total Inbound</b>		41,747	45,031	-	-	-	-	-	-	-	-	-	-	86,778
<b>Outbound</b>	<b>Empty</b>	6,683	6,145											12,828
	<b>Loaded</b>	<u>38,244</u>	<u>40,625</u>											<u>78,869</u>
<b>Total Outbound</b>		44,927	46,770	-	-	-	-	-	-	-	-	-	-	91,697
<b>Total Empty</b>		25,001	25,085	-	-	-	-	-	-	-	-	-	-	50,086
<b>Total Loaded</b>		<u>61,673</u>	<u>66,716</u>											<u>128,389</u>
<b>Total TEUs</b>		<u>86,674</u>	<u>91,801</u>											<u>178,475</u>

		<b>Fiscal Year 2014</b>												<b>TOTAL</b>
		<b>OCT</b>	<b>NOV</b>	<b>DEC</b>	<b>JAN</b>	<b>FEB</b>	<b>MAR</b>	<b>APR</b>	<b>MAY</b>	<b>JUN</b>	<b>JUL</b>	<b>AUG</b>	<b>SEP</b>	
<b>Inbound</b>	<b>Empty</b>	16,240	17,544	13,607	12,137	12,499	12,801	11,938	13,937	14,011	16,478	16,390	15,810	173,392
	<b>Loaded</b>	<u>23,366</u>	<u>25,394</u>	<u>29,069</u>	<u>27,047</u>	<u>28,176</u>	<u>34,000</u>	<u>33,434</u>	<u>30,567</u>	<u>25,388</u>	<u>26,158</u>	<u>26,680</u>	<u>23,363</u>	<u>332,641</u>
<b>Total Inbound</b>		39,606	42,937	42,676	39,184	40,675	46,801	45,372	44,504	39,399	42,636	43,070	39,173	506,033
<b>Outbound</b>	<b>Empty</b>	4,436	6,540	10,793	11,756	11,091	13,859	12,157	8,906	5,278	5,715	7,832	6,018	104,381
	<b>Loaded</b>	<u>32,997</u>	<u>35,664</u>	<u>28,820</u>	<u>29,249</u>	<u>30,853</u>	<u>35,281</u>	<u>32,758</u>	<u>35,279</u>	<u>34,867</u>	<u>34,253</u>	<u>38,607</u>	<u>34,302</u>	<u>402,930</u>
<b>Total Outbound</b>		37,433	42,204	39,613	41,005	41,944	49,140	44,915	44,185	40,145	39,967	46,439	40,321	507,311
<b>Total Empty</b>		20,676	24,084	24,400	23,893	23,590	26,660	24,095	22,843	19,289	22,192	24,222	21,828	277,773
<b>Total Loaded</b>		<u>56,363</u>	<u>61,058</u>	<u>57,889</u>	<u>56,296</u>	<u>59,029</u>	<u>69,281</u>	<u>66,192</u>	<u>65,846</u>	<u>60,255</u>	<u>60,411</u>	<u>65,287</u>	<u>57,665</u>	<u>735,572</u>
<b>Total TEUs</b>		<u>77,039</u>	<u>85,141</u>	<u>82,289</u>	<u>80,189</u>	<u>82,619</u>	<u>95,941</u>	<u>90,287</u>	<u>88,689</u>	<u>79,544</u>	<u>82,603</u>	<u>89,509</u>	<u>79,494</u>	<u>1,013,344</u>

		<b>Calendar Year 2014</b>												<b>TOTAL</b>
		<b>JAN</b>	<b>FEB</b>	<b>MAR</b>	<b>APR</b>	<b>MAY</b>	<b>JUN</b>	<b>JUL</b>	<b>AUG</b>	<b>SEP</b>	<b>OCT</b>	<b>NOV</b>	<b>DEC</b>	
<b>Inbound</b>	<b>Empty</b>	12,137	12,499	12,801	11,938	13,937	14,011	16,478	16,390	15,810	18,318	18,940		163,259
	<b>Loaded</b>	<u>27,047</u>	<u>28,176</u>	<u>34,000</u>	<u>33,434</u>	<u>30,567</u>	<u>25,388</u>	<u>26,158</u>	<u>26,680</u>	<u>23,363</u>	<u>23,429</u>	<u>26,091</u>		<u>304,333</u>
<b>Total Inbound</b>		39,184	40,675	46,801	45,372	44,504	39,399	42,636	43,070	39,173	41,747	45,031	-	467,592
<b>Outbound</b>	<b>Empty</b>	11,756	11,091	13,859	12,157	8,906	5,278	5,715	7,832	6,018	6,683	6,145		95,440
	<b>Loaded</b>	<u>29,249</u>	<u>30,853</u>	<u>35,281</u>	<u>32,758</u>	<u>35,279</u>	<u>34,867</u>	<u>34,253</u>	<u>38,607</u>	<u>34,302</u>	<u>38,244</u>	<u>40,625</u>		<u>384,318</u>
<b>Total Outbound</b>		41,005	41,944	49,140	44,915	44,185	40,145	39,967	46,439	40,321	44,927	46,770	-	479,758
<b>Total Empty</b>		23,893	23,590	26,660	24,095	22,843	19,289	22,192	24,222	21,828	25,001	25,085	-	258,699
<b>Total Loaded</b>		<u>56,296</u>	<u>59,029</u>	<u>69,281</u>	<u>66,192</u>	<u>65,846</u>	<u>60,255</u>	<u>60,411</u>	<u>65,287</u>	<u>57,665</u>	<u>61,673</u>	<u>66,716</u>	-	<u>688,651</u>
<b>Total TEUs</b>		<u>80,189</u>	<u>82,619</u>	<u>95,941</u>	<u>90,287</u>	<u>88,689</u>	<u>79,544</u>	<u>82,603</u>	<u>89,509</u>	<u>79,494</u>	<u>86,674</u>	<u>91,801</u>	-	<u>947,350</u>

		<b>Calendar Year 2013</b>												<b>TOTAL</b>
		<b>JAN</b>	<b>FEB</b>	<b>MAR</b>	<b>APR</b>	<b>MAY</b>	<b>JUN</b>	<b>JUL</b>	<b>AUG</b>	<b>SEP</b>	<b>OCT</b>	<b>NOV</b>	<b>DEC</b>	
<b>Inbound</b>	<b>Empty</b>	17,401	12,691	15,891	13,813	15,314	13,675	15,158	14,238	13,982	16,240	17,544	13,607	179,554
	<b>Loaded</b>	<u>24,717</u>	<u>24,684</u>	<u>29,765</u>	<u>26,671</u>	<u>24,625</u>	<u>21,239</u>	<u>19,545</u>	<u>21,925</u>	<u>22,484</u>	<u>23,366</u>	<u>25,394</u>	<u>29,069</u>	<u>293,483</u>
<b>Total Inbound</b>		42,118	37,375	45,656	40,484	39,939	34,914	34,703	36,163	36,466	39,606	42,937	42,676	473,037
<b>Outbound</b>	<b>Empty</b>	9,829	9,658	10,354	8,040	8,849	4,009	4,391	4,675	4,916	4,436	6,540	10,793	86,490
	<b>Loaded</b>	<u>30,731</u>	<u>30,493</u>	<u>34,290</u>	<u>30,683</u>	<u>32,269</u>	<u>31,571</u>	<u>28,986</u>	<u>31,741</u>	<u>32,200</u>	<u>32,997</u>	<u>35,664</u>	<u>28,820</u>	<u>380,445</u>
<b>Total Outbound</b>		40,560	40,151	44,644	38,723	41,118	35,580	33,377	36,416	37,116	37,433	42,204	39,613	466,935
<b>Total Empty</b>		27,230	22,349	26,245	21,853	24,163	17,684	19,549	18,913	18,898	20,676	24,084	24,400	266,044
<b>Total Loaded</b>		<u>55,448</u>	<u>55,177</u>	<u>64,055</u>	<u>57,354</u>	<u>56,894</u>	<u>52,810</u>	<u>48,531</u>	<u>53,666</u>	<u>54,684</u>	<u>56,363</u>	<u>61,058</u>	<u>57,889</u>	<u>673,928</u>
<b>Total TEUs</b>		<u>82,678</u>	<u>77,526</u>	<u>90,300</u>	<u>79,207</u>	<u>81,057</u>	<u>70,494</u>	<u>68,080</u>	<u>72,579</u>	<u>73,582</u>	<u>77,039</u>	<u>85,142</u>	<u>82,289</u>	<u>939,972</u>

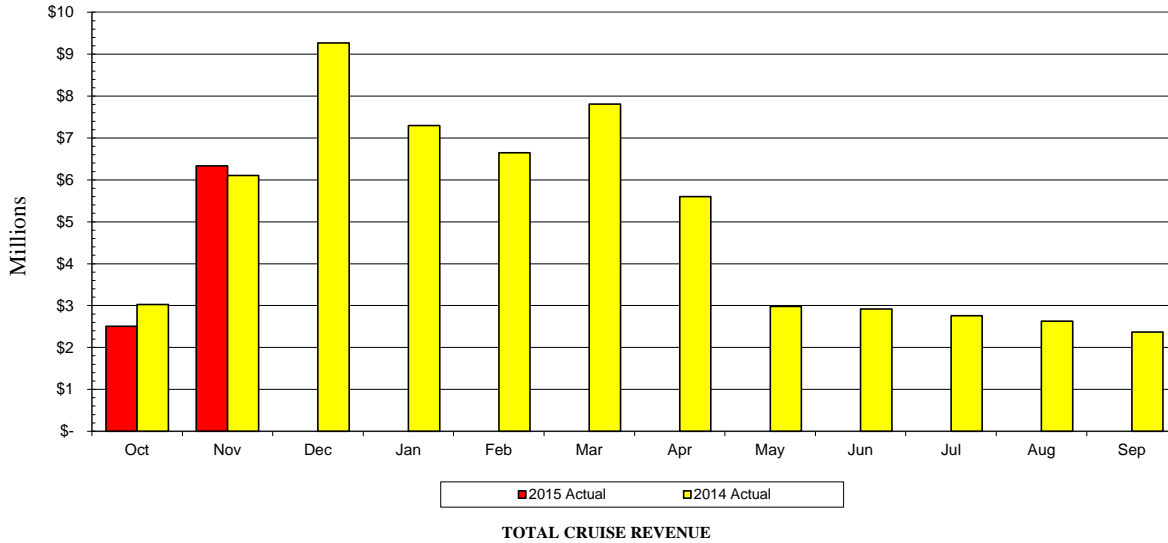
# **Cruise Revenue Reports**

# PORT EVERGLADES DEPARTMENT

## FISCAL YEAR 2015 REVENUE TO FISCAL YEAR 2014 REVENUE REPORT

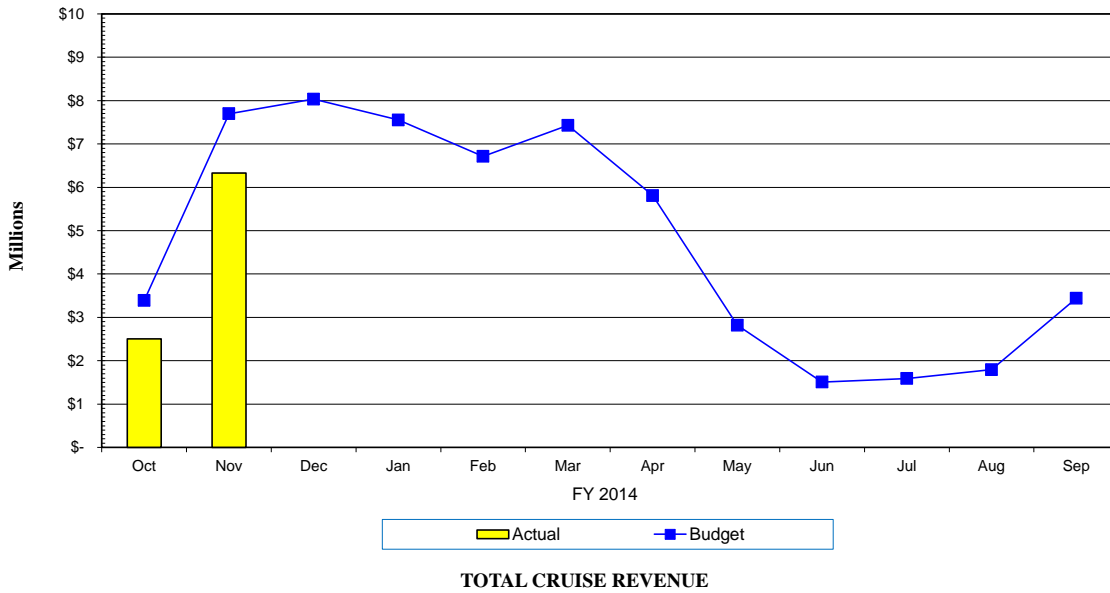
NOVEMBER 2014

FISCAL MONTH			F Y T D				
<u>2015 Actual</u>	<u>2014 Actual</u>	<u>Variance</u>			<u>2015 Actual</u>	<u>2014 Actual</u>	<u>Variance</u>
			1020	Cruise			
\$8,120	\$7,308	\$812	4514	Cruise Wharfage	\$8,120	\$7,308	\$812
5,773	0	5,773	4515	Ferry Wharfage	12,351	0	12,351
0	0	0	4518	Wharfage Discount	0	0	0
5,557	1,625	3,932	4523	Term. Sec. Reimb.	10,944	1,625	9,319
6,176,960	6,011,705	165,255	4524	Port User Charge	8,589,903	9,000,468	(410,565)
0	0	0	4526	Port User Charge CCRC *	0	0	0
30,000	30,000	0	4527	Ferry Service Revenue	60,000	60,000	0
61,768	8,707	53,061	4531	Dockage	92,428	8,707	83,721
0	0	0	4539	Dockage Discount	0	0	0
734	389	345	4541	Harbormaster	1,399	389	1,010
4,777	1,395	3,382	4542	Linehandlers	10,121	1,395	8,726
13,792	21,336	(7,544)	4543	Tug Fees	13,792	22,810	(9,018)
0	0	0	4568	Crane/Heavy Lift	0	0	0
1,072	5,893	(4,821)	4572	Penalties	1,072	5,893	(4,821)
1,158	495	663	4581	Fresh Water	2,949	1,109	1,840
1,312	0	1,312	4583	Sewage Disposal	1,312	0	1,312
0	0	0	4587	Reefer Electricity	0	0	0
817	154	663	4588	Reimburse Electric	1,907	165	1,742
2,170	573	1,597	4589	Reimburse Labor	3,761	573	3,188
16,840	15,750	1,090	4602	Electric Forklift/Cruise	28,078	24,250	3,828
<b><u>\$6,330,850</u></b>	<b><u>\$6,105,330</u></b>	<b><u>\$225,520</u></b>		<b>Total Cruise Revenue</b>	<b><u>\$8,838,137</u></b>	<b><u>\$9,134,692</u></b>	<b><u>(\$296,555)</u></b>



**PORT EVERGLADES DEPARTMENT  
FISCAL YEAR 2015 REVENUE TO BUDGET REPORT  
NOVEMBER 2014**

FISCAL MONTH			F Y T D				
Actual	Budget	Variance			Actual	Budget	Variance
			1020	Cruise			
\$8,120	\$7,200	\$920	4514	Cruise Wharfage	\$8,120	\$7,200	\$920
5,773	0	5,773	4515	Ferry Wharfage	12,351	0	12,351
0	0	0	4518	Whrg. Vol. Incentives	0	0	0
5,557	8,500	(2,943)	4523	Term. Sec. Reimb.	10,944	8,500	2,444
6,176,960	7,616,300	(1,439,340)	4524	Port User Charge	8,589,903	10,961,900	(2,371,997)
30,000	30,000	0	4527	Ferry Service Revenue	60,000	60,000	0
61,768	8,400	53,368	4531	Dockage	92,428	8,400	84,028
0	0	0	4539	Dockage Vol. Incentives	0	0	0
734	400	334	4541	Harbormaster	1,399	400	999
4,777	700	4,077	4542	Linehandlers	10,121	700	9,421
13,792	0	13,792	4543	Tug Fees	13,792	0	13,792
0	0	0	4568	Crane/Heavy Lift	0	0	0
1,072	0	1,072	4572	Penalties	1,072	0	1,072
1,158	2,700	(1,542)	4581	Fresh Water	2,949	3,700	(751)
1,312	0	1,312	4583	Sewage Disposal	1,312	0	1,312
0	0	0	4587	Reefer Electricity	0	0	0
817	300	517	4588	Reimburse Electric	1,907	300	1,607
2,170	500	1,670	4589	Reimburse Labor	3,761	500	3,261
16,840	15,700	1,140	4602	Electric Forklift Cruise	28,078	24,200	3,878
0	6,700	(6,700)	4544	Other Revenue	0	13,400	(13,400)
<b>\$6,330,850</b>	<b>\$7,697,400</b>	<b>(\$1,366,550)</b>	<b>Total Cruise Revenue</b>		<b>\$8,838,137</b>	<b>\$11,089,200</b>	<b>(\$2,251,063)</b>



**PORT EVERGLADES****Cruise Operators Minimum Guarantee for Contract Year to Date****November 2014**

<b>OPERATOR</b>	<b>Next Contract Year End</b>	<b>Minimum Guaranteed units</b>	<b>Minimum Guaranteed Amount</b>	<b>Tiers</b>	<b>Contract YTD November-14 Amount</b>
Carnival Corporation	09/01/15	Passengers	1,700,000		325,255
Royal Caribbean Cruises Limited	12/31/14	Passengers	2,542,628	<b><u>Note 1</u></b>	2,070,821
Balearia Caribbean Ltd., Corp	11/30/14	Passengers	1 - 50,000	Tier 1	
			50,001 - 100,000	Tier 2	
			100,001 - 150,000	Tier 3	123,866
			Over - 150,000	Tier 4	

**Note 1****Effective August 1, 2014, RCL's forecasted passenger movement for the contact year ending 12/31/14 was increased to 2,542,628.**



# **Bulk & Break Bulk Revenue Reports**

**PORT EVERGLADES DEPARTMENT  
FISCAL YEAR 2015 REVENUE TO FISCAL YEAR 2014 REVENUE REPORT**

**NOVEMBER 2014**

FISCAL MONTH			F Y T D				
<u>2015 Actual</u>	<u>2014 Actual</u>	<u>Variance</u>			<u>2015 Actual</u>	<u>2014 Actual</u>	<u>Variance</u>
			1025	<b>Bulk</b>			
\$103,626	\$61,577	\$42,049	4511	Cargo Wharfage	\$184,926	\$148,127	\$36,799
0	0	0	4519	Whrg. Vol. Incentives	0	0	0
11,226	4,620	6,606	4522	Security Fees	17,187	12,341	4,846
117,705	37,972	79,733	4531	Dockage	167,078	106,676	60,402
2,065	2,312	(247)	4541	Harbormaster	5,079	4,624	455
4,712	5,654	(942)	4542	Linehandlers	10,536	11,641	(1,105)
2,628	1,817	811	4543	Tug Fees	4,773	5,659	(886)
0	0	0	4553	Grid Rental	0	0	0
0	0	0	4572	Penalties	0	0	0
951	259	692	4581	Fresh Water	1,740	539	1,201
0	0	0	4588	Reimburse Electric	0	0	0
0	0	0	4589	Reimburse Labor	0	0	0
0	0	0	6990	Misc. Revenue	0	0	0
<b><u>\$242,913</u></b>	<b><u>\$114,211</u></b>	<b><u>\$128,702</u></b>		<b>Total Bulk Revenue</b>	<b><u>\$391,319</u></b>	<b><u>\$289,607</u></b>	<b><u>\$101,712</u></b>
			1030	<b>Break Bulk</b>			
\$166,268	\$25,180	\$141,088	4511	Cargo Wharfage	\$267,687	\$158,116	\$109,571
14	0	14	4512	Box Wharfage	14	0	14
0	0	0	4519	Whrg. Vol. Incentives	0	0	0
20,592	4,317	16,275	4522	Security Fees	30,182	21,863	8,319
194,739	44,052	150,687	4531	Dockage	283,197	223,543	59,654
6,766	2,169	4,597	4541	Harbormaster	12,330	6,445	5,885
18,877	7,054	11,823	4542	Linehandlers	30,166	28,423	1,743
4,778	1,328	3,450	4543	Tug Fees	8,431	7,893	538
30,895	17,930	12,965	4551	Storage	129,964	32,848	97,116
0	0	0	4552	Demurrage	0	0	0
4,498	7,252	(2,754)	4566	Crane Rental	16,361	9,475	6,886
0	0	0	4568	Crane/Heavy Lift	0	0	0
0	0	0	4569	Crane Vol. Incentives	0	0	0
0	0	0	4572	Penalties	0	851	(851)
1,605	1,130	475	4581	Fresh Water	2,054	3,285	(1,231)
0	0	0	4583	Sewage Disposal	0	0	0
0	0	0	4588	Reimburse Electric	0	0	0
0	0	0	4589	Reimburse Labor	0	328	(328)
0	0	0	6990	Misc. Revenue	0	0	0
<b><u>\$449,032</u></b>	<b><u>\$110,412</u></b>	<b><u>\$338,620</u></b>			<b><u>\$780,386</u></b>	<b><u>\$493,070</u></b>	<b><u>\$287,316</u></b>

**PORT EVERGLADES DEPARTMENT  
FISCAL YEAR 2015 REVENUE TO BUDGET REPORT  
NOVEMBER 2014**

FISCAL MONTH			F Y T D				
<u>Actual</u>	<u>Budget</u>	<u>Variance</u>			<u>Actual</u>	<u>Budget</u>	<u>Variance</u>
			1025	<b>Bulk</b>			
\$103,626	\$61,600	\$42,026	4511	Cargo Wharfage	\$184,926	\$148,100	\$36,826
0	0	0	4519	Whrg. Vol. Incentives	0	0	0
11,226	4,600	6,626	4522	Security Fees	17,187	12,300	4,887
117,705	37,900	79,805	4531	Dockage	167,078	106,600	60,478
2,065	2,300	(235)	4541	Harbormaster	5,079	4,600	479
4,712	5,600	(888)	4542	Linehandlers	10,536	11,600	(1,064)
2,628	1,800	828	4543	Tug Fees	4,773	5,600	(827)
0	0	0	4553	Grid Rental	0	0	0
0	0	0	4572	Penalties	0	0	0
951	300	651	4581	Fresh Water	1,740	600	1,140
0	0	0	4588	Reimburse Electric	0	0	0
0	0	0	4589	Reimburse Labor	0	0	0
0	0	0	6990	Misc. Revenue	0	0	0
<b><u>\$242,913</u></b>	<b><u>\$114,100</u></b>	<b><u>\$128,813</u></b>		<b>Total Bulk Revenue</b>	<b><u>\$391,319</u></b>	<b><u>\$289,400</u></b>	<b><u>\$101,919</u></b>
			1030	<b>Break Bulk</b>			
166,268	25,200	141,068	4511	Cargo Wharfage	267,687	158,100	109,587
14	0	14	4512	Box Wharfage	14	0	14
0	0	0	4519	Whrg. Vol. Incentives	0	0	0
20,592	4,300	16,292	4522	Security Fees	30,182	21,800	8,382
194,739	44,100	150,639	4531	Dockage	283,197	223,600	59,597
6,766	2,200	4,566	4541	Harbormaster	12,330	6,500	5,830
18,877	7,100	11,777	4542	Linehandlers	30,166	28,500	1,666
4,778	2,800	1,978	4543	Tug Fees	8,431	5,500	2,931
30,895	17,900	12,995	4551	Storage	129,964	32,800	97,164
0	0	0	4552	Demurrage	0	0	0
4,498	7,300	(2,802)	4566	Crane Rental	16,361	9,500	6,861
0	0	0	4568	Crane-Heavy Lift	0	0	0
0	0	0	4569	Crane Vol. Incentives	0	0	0
0	0	0	4572	Penalties	0	0	0
1,605	1,100	505	4581	Fresh Water	2,054	3,300	(1,246)
0	0	0	4583	Sewage Disposal	0	0	0
0	0	0	4588	Reimburse Electric	0	0	0
0	0	0	4589	Reimburse Labor	0	300	(300)
0	0	0	6990	Misc. Revenue	0	0	0
<b><u>\$449,032</u></b>	<b><u>\$112,000</u></b>	<b><u>\$337,032</u></b>		<b>Total Break Bulk Revenue</b>	<b><u>\$780,386</u></b>	<b><u>\$489,900</u></b>	<b><u>\$290,486</u></b>

# **Real Estate Revenue Reports**

**PORT EVERGLADES DEPARTMENT  
FISCAL YEAR 2015 REVENUE TO FISCAL YEAR 2014 REVENUE REPORT**

**NOVEMBER 2014**

FISCAL MONTH			F Y T D				
<u>2015 Actual</u>	<u>2014 Actual</u>	<u>Variance</u>		<u>2015 Actual</u>	<u>2014 Actual</u>	<u>Variance</u>	
			1050	<b>Real Estate</b>			
\$39,045	\$32,436	\$6,609	4553	Grid Rental	\$79,778	\$73,014	\$6,764
762,067	651,978	110,089	4561	Land	1,520,404	1,306,945	213,459
163,732	142,977	20,755	4562	Offices & Off. Bldgs	330,648	341,604	(10,956)
0	0	0	4563	Restaurants	0	0	0
207,872	225,733	(17,861)	4564	Warehouses	415,744	446,855	(31,111)
0	0	0	4565	Easements	14,293	13,877	416
2,861	3,128	(267)	4573	Commissions	3,670	5,610	(1,940)
0	365	(365)	4576	Late Rent Fees	0	1,805	(1,805)
295	0	295	4581	Fresh Water	381	0	381
0	0	0	4583	Sewage Disposal	0	0	0
27,235	38,296	(11,061)	4585	Licenses & Permits	55,389	77,979	(22,590)
21,178	21,231	(53)	4588	Reimburse Electric	44,667	44,214	453
23,167	0	23,167	4608	Payment in Lieu of Rent -FEC	23,167	0	23,167
0	0	0	6940	Reimbursement - Other	0	0	0
0	0	0	6982	Fire Assessment Reimb.	0	0	0
0	0	0	6990	Misc. Revenue	0	0	0
<b><u>\$1,247,452</u></b>	<b><u>\$1,116,144</u></b>	<b><u>\$131,308</u></b>		<b>Total Real Estate Revenue</b>	<b><u>\$2,488,141</u></b>	<b><u>\$2,311,903</u></b>	<b><u>\$176,238</u></b>
			1055	<b>F T Z</b>			
\$23,349	\$27,482	(\$4,133)	4551	Storage	\$49,259	\$52,833	(\$3,574)
25,053	24,580	473	4554	NC Zone Fees	54,768	53,200	1,568
4,337	4,310	27	4588	Reimburse Electric	9,286	8,983	303
0	0	0	4589	Reimburse Labor	0	0	0
0	0	0	4600	Annual Subzone Fees	0	0	0
179	0	179	6940	Reimbursement - Other	383	0	383
0	94	(94)	6990	Misc. Revenue	0	303	(303)
<b><u>\$52,918</u></b>	<b><u>\$56,466</u></b>	<b><u>(\$3,548)</u></b>		<b>Total FTZ Revenue</b>	<b><u>\$113,696</u></b>	<b><u>\$115,319</u></b>	<b><u>(\$1,623)</u></b>
			2060	<b>Rail Revenue</b>			
\$0	\$0	\$0	4606	Rail Revenues - FEC	\$0	\$0	\$0
0	0	0	4607	Rail Revenues - Motiva	0	0	0
<b><u>\$0</u></b>	<b><u>\$0</u></b>	<b><u>\$0</u></b>		<b>Total Rail Revenues</b>	<b><u>\$0</u></b>	<b><u>\$0</u></b>	<b><u>\$0</u></b>

**PORT EVERGLADES DEPARTMENT  
FISCAL YEAR 2015 REVENUE TO FISCAL YEAR 2014 REVENUE REPORT**

**NOVEMBER 2014**

FISCAL MONTH							F Y T D		
<u>2015 Actual</u>	<u>2014 Actual</u>	<u>Variance</u>					<u>2015 Actual</u>	<u>2014 Actual</u>	<u>Variance</u>
			2010	<b>Midport Garage</b>					
\$0	\$0	\$0	4573	Commissions			\$0	\$0	\$0
14,760	11,641	3,119	4593	Garage - Other			21,220	18,073	3,147
724,676	461,410	263,266	4594	Garage - Cruise			942,957	650,832	292,125
0	0	0	4595	Garage - Conv. Ctr.			0	0	0
3,997	1,334	2,663	4596	Oversize Vehicle			4,668	2,248	2,420
0	0	0	4597	Valet Parking			0	0	0
0	0	0	4598	Overflow Parking			0	0	0
<u>0</u>	<u>0</u>	<u>0</u>	6990	Misc. Revenue			<u>0</u>	<u>0</u>	<u>0</u>
<b><u>\$743,433</u></b>	<b><u>\$474,385</u></b>	<b><u>\$269,048</u></b>	<b>Total Midport Garage Revenue</b>				<b><u>\$968,845</u></b>	<b><u>\$671,153</u></b>	<b><u>\$297,692</u></b>
			2020	<b>Northport Garage</b>					
\$0	\$0	\$0	4573	Commissions			\$0	\$0	\$0
0	0	0	4592	Garage - Marketplace			0	0	0
0	0	0	4593	Garage - Other			0	14	(14)
232,758	148,533	84,225	4594	Garage - Cruise			326,450	190,325	136,125
80,159	99,661	(19,502)	4595	Garage - Conv. Ctr.			193,416	186,401	7,015
2,758	2,198	560	4596	Oversize Vehicle			3,895	3,248	647
0	0	0	4597	Valet Parking			0	0	0
0	0	0	4598	Overflow Parking			0	2,925	(2,925)
0	0	0	4599	Exhibitor Parking			0	0	0
<u>0</u>	<u>0</u>	<u>0</u>	6990	Misc. Revenue			<u>0</u>	<u>0</u>	<u>0</u>
<b><u>\$315,675</u></b>	<b><u>\$250,392</u></b>	<b><u>\$65,283</u></b>	<b>Total Northport Garage Revenue</b>				<b><u>\$523,761</u></b>	<b><u>\$382,913</u></b>	<b><u>\$140,848</u></b>
<b><u>\$1,059,108</u></b>	<b><u>\$724,777</u></b>	<b><u>\$334,331</u></b>	<b>Total Parking Facilities Revenue</b>				<b><u>\$1,492,606</u></b>	<b><u>\$1,054,066</u></b>	<b><u>\$438,540</u></b>

**PORT EVERGLADES DEPARTMENT  
FISCAL YEAR 2015 REVENUE TO BUDGET REPORT  
NOVEMBER 2014**

FISCAL MONTH			F Y T D				
<u>Actual</u>	<u>Budget</u>	<u>Variance</u>		<u>Actual</u>	<u>Budget</u>	<u>Variance</u>	
<b>1050 Real Estate</b>							
\$39,045	\$7,558	\$31,487	4553	Grid Rental	\$79,778	\$15,116	\$64,662
762,067	718,900	43,167	4561	Land	1,520,404	1,633,900	(113,496)
163,732	168,200	(4,468)	4562	Offices & Off. Bldgs.	330,648	336,800	(6,152)
0	0	0	4563	Restaurants	0	0	0
207,872	178,600	29,272	4564	Warehouses	415,744	357,200	58,544
0	3,900	(3,900)	4565	Easements	14,293	18,200	(3,907)
2,861	4,600	(1,739)	4573	Commissions	3,670	6,700	(3,030)
0	1,000	(1,000)	4576	Late Rent Fees	0	2,000	(2,000)
295	0	295	4581	Fresh Water	381	0	381
0	0	0	4583	Sewage Disposal	0	0	0
27,235	64,700	(37,465)	4585	Licenses & Permits	55,389	95,450	(40,061)
21,178	22,650	(1,472)	4588	Reimburse Electric	44,667	45,300	(633)
23,167	0	23,167	4608	Payment in Lieu of Rent -FEC	23,167	0	23,167
0	0	0	6940	Reimbursement - Other	0	0	0
0	0	0	6982	Fire Assessment Reimb.	0	0	0
<b><u>\$1,247,452</u></b>	<b><u>\$1,170,108</u></b>	<b><u>\$77,344</u></b>		<b>Total Real Estate Revenue</b>	<b><u>\$2,488,141</u></b>	<b><u>\$2,510,666</u></b>	<b><u>(\$22,525)</u></b>
<b>1055 F T Z</b>							
\$23,349	\$21,700	\$1,649	4551	Storage	\$49,259	\$43,400	\$5,859
25,053	22,800	2,253	4554	FTZ Zone Transaction Fees	54,768	49,300	5,468
4,337	5,000	(663)	4588	Reimburse Electric	9,286	10,000	(714)
0	0	0	4589	Reimburse Labor	0	0	0
0	59,000	(59,000)	4600	Annual Sub Zone Fees	0	59,000	(59,000)
179	200	(21)	6940	Reimbursement - Other	383	400	(17)
0	0	0	6990	Misc. Revenue	0	0	0
<b><u>\$52,918</u></b>	<b><u>\$108,700</u></b>	<b><u>(\$55,782)</u></b>		<b>Total FTZ Revenue</b>	<b><u>\$113,696</u></b>	<b><u>\$162,100</u></b>	<b><u>(\$48,404)</u></b>
<b>2060 Rail Revenue</b>							
\$0	\$0	\$0	4606	Rail Revenues - FEC	\$0	\$0	\$0
0	0	0	4607	Rail Revenues - Motiva	0	0	0
<b><u>\$0</u></b>	<b><u>\$0</u></b>	<b><u>\$0</u></b>		<b>Total Rail Revenues</b>	<b><u>\$0</u></b>	<b><u>\$0</u></b>	<b><u>\$0</u></b>

**PORT EVERGLADES DEPARTMENT  
FISCAL YEAR 2015 REVENUE TO BUDGET REPORT  
NOVEMBER 2014**

FISCAL MONTH			F Y T D				
<u>Actual</u>	<u>Budget</u>	<u>Variance</u>			<u>Actual</u>	<u>Budget</u>	<u>Variance</u>
			2010	<b>Midport Garage</b>			
\$0	\$0	\$0	4573	Commissions	\$0	\$0	\$0
14,760	10,000	4,760	4593	Garage - Other	21,220	15,300	5,920
724,676	470,000	254,676	4594	Garage - Cruise	942,957	639,500	303,457
0	0	0	4595	Garage - Conv. Ctr	0	0	0
3,997	400	3,597	4596	Oversize Vehicle	4,668	500	4,168
0	0	0	4597	Valet Parking	0	0	0
0	0	0	4598	Overflow Parking	0	0	0
<u>0</u>	<u>0</u>	<u>0</u>	6990	Misc. Revenue	<u>0</u>	<u>0</u>	<u>0</u>
<b><u>\$743,433</u></b>	<b><u>\$480,400</u></b>	<b><u>\$263,033</u></b>		<b>Total Midport Garage Revenue</b>	<b><u>\$968,845</u></b>	<b><u>\$655,300</u></b>	<b><u>\$313,545</u></b>
			2020	<b>Northport Garage</b>			
\$0	\$0	\$0	4573	Commissions	\$0	\$0	\$0
0	0	0	4592	Garage - Marketplace	0	0	0
0	0	0	4593	Garage - Other	0	0	0
232,758	181,200	51,558	4594	Garage - Cruise	326,450	212,100	114,350
80,159	83,100	(2,941)	4595	Garage - Conv. Ctr	193,416	175,600	17,816
2,758	1,000	1,758	4596	Oversize Vehicle	3,895	2,600	1,295
0	0	0	4597	Valet Parking	0	0	0
0	0	0	4598	Overflow Parking	0	0	0
0	0	0	4599	Exhibitor Parking	0	0	0
<u>0</u>	<u>0</u>	<u>0</u>	6990	Misc. Revenue	<u>0</u>	<u>0</u>	<u>0</u>
<b><u>\$315,675</u></b>	<b><u>\$265,300</u></b>	<b><u>\$50,375</u></b>		<b>Total Northport Garage Revenue</b>	<b><u>\$523,761</u></b>	<b><u>\$390,300</u></b>	<b><u>\$133,461</u></b>
<b><u>\$1,059,108</u></b>	<b><u>\$745,700</u></b>	<b><u>\$313,408</u></b>		<b>Total Parking Facilities Revenue</b>	<b><u>\$1,492,606</u></b>	<b><u>\$1,045,600</u></b>	<b><u>\$447,006</u></b>



# **Other Revenue Center Reports**

**PORT EVERGLADES DEPARTMENT  
FISCAL YEAR 2015 REVENUE TO FISCAL YEAR 2014 REVENUE REPORT**

**NOVEMBER 2014**

<b>FISCAL MONTH</b>			<b>F Y T D</b>				
<u>2015 Actual</u>	<u>2014 Actual</u>	<u>Variance</u>		<u>2015 Actual</u>	<u>2014 Actual</u>	<u>Variance</u>	
			1045	<b>Lay-In</b>			
\$0	\$0	\$0	4511	Cargo Wharfage	\$0	\$0	
5,881	6,837	(956)	4522	Security Fees	17,389	8,460	
90,079	100,995	(10,916)	4531	Dockage	264,370	124,555	
0	0	0	4539	Dockage Vol. Incentives	0	0	
8,304	7,755	549	4541	Harbormaster	11,466	12,440	
11,982	12,712	(730)	4542	Linehandlers	18,164	20,462	
330	1,397	(1,067)	4543	Tug Fees	1,776	3,387	
1,769	5,852	(4,083)	4581	Fresh Water	1,833	6,290	
0	5,104	(5,104)	4583	Sewage Disposal	0	5,104	
0	0	0	4587	Reefer Electricity	0	0	
0	0	0	4588	Reimburse Electric	0	0	
0	3,214	(3,214)	4589	Reimburse Labor	0	3,214	
0	0	0	6990	Misc. Revenue	0	0	
<b><u>\$118,345</u></b>	<b><u>\$143,866</u></b>	<b><u>(\$25,521)</u></b>		<b>Total Lay-In Revenue</b>	<b><u>\$314,998</u></b>	<b><u>\$183,912</u></b>	<b><u>\$131,086</u></b>
			1060	<b>Public Safety Services</b>			
\$7,152	\$0	\$7,152	4522	Security Fees	\$14,304	\$0	
11,271	5,696	5,575	4574	ID Badges	27,284	13,087	
700	400	300	4575	Dock Passes	1,700	2,300	
0	0	0	4585	Licenses & Permits	0	0	
211	0	211	5912	Moving Violations	583	119	
0	7,152	(7,152)	6990	Misc. Revenue	0	14,304	
<b><u>\$19,334</u></b>	<b><u>\$13,248</u></b>	<b><u>\$6,086</u></b>		<b>Total Public Safety Revenue</b>	<b><u>\$43,871</u></b>	<b><u>\$29,810</u></b>	<b><u>\$14,061</u></b>
			3000	<b>Finance</b>			
\$11,070	\$6,031	\$5,039	4571	Finance Charges	\$23,061	\$15,927	
0	0	0	4572	Penalties	0	0	
0	0	0	4573	Commissions	0	0	
0	0	0	4576	Late Rent Fees	0	0	
0	0	0	4589	Reimburse Labor	0	0	
0	0	0	6982	Fire Assessment Reimb.	0	0	
0	0	0	6983	Payt inLieu of Taxes Reimburs	0	0	
0	2,286	(2,286)	6990	Misc. Revenue	0	3,128	
<b><u>\$11,070</u></b>	<b><u>\$8,317</u></b>	<b><u>\$2,753</u></b>		<b>Total Finance Revenue</b>	<b><u>\$23,061</u></b>	<b><u>\$19,055</u></b>	<b><u>\$4,006</u></b>
<b><u>\$15,499,492</u></b>	<b><u>\$13,865,600</u></b>	<b><u>\$1,633,892</u></b>		<b>TOTAL OPERATING REVENUE</b>	<b><u>\$25,535,912</u></b>	<b><u>\$23,804,797</u></b>	<b><u>\$1,731,115</u></b>

**PORT EVERGLADES DEPARTMENT  
FISCAL YEAR 2015 REVENUE TO BUDGET REPORT  
NOVEMBER 2014**

FISCAL MONTH			F Y T D			
<u>Actual</u>	<u>Budget</u>	<u>Variance</u>		<u>Actual</u>	<u>Budget</u>	<u>Variance</u>
			1045	<b>Lay-In</b>		
\$0	\$0	\$0	4511	Cargo Wharfage	\$0	\$0
5,881	3,750	2,131	4522	Security Fees	17,389	7,500
90,079	68,667	21,412	4531	Dockage	264,370	137,334
0	0	0	4539	Dockage Vol. Incentives	0	0
8,304	3,867	4,437	4541	Harbormaster	11,466	7,734
11,982	6,008	5,974	4542	Linehandlers	18,164	12,016
330	1,000	(670)	4543	Tug Fees	1,776	2,000
1,769	1,458	311	4581	Fresh Water	1,833	2,916
0	1,292	(1,292)	4583	Sewage Disposal	0	2,584
0	0	0	4587	Reefer Electricity	0	0
0	0	0	4588	Reimburse Electric	0	0
0	600	(600)	4589	Reimburse Labor	0	1,200
0	0	0	6990	Misc. Revenue	0	0
<b><u>\$118,345</u></b>	<b><u>\$86,642</u></b>	<b><u>\$31,703</u></b>		<b>Total Lay-In Revenue</b>	<b><u>\$314,998</u></b>	<b><u>\$173,284</u></b>
			1060	<b>Public Safety Services</b>		
\$7,152	\$7,080	\$72	4522	Security Fees	\$14,304	\$14,160
11,271	5,420	5,851	4574	ID Badges	27,284	10,840
700	1,250	(550)	4575	Dock Passes	1,700	2,500
0	0	0	4585	Licenses & Permits	0	0
211	250	(39)	5912	Moving Violations	583	500
0	0	0	6990	Misc. Revenue	0	0
<b><u>\$19,334</u></b>	<b><u>\$14,000</u></b>	<b><u>\$5,334</u></b>		<b>Total Public Safety Revenue</b>	<b><u>\$43,871</u></b>	<b><u>\$28,000</u></b>
			3000	<b>Finance</b>		
\$11,070	\$12,500	(\$1,430)	4571	Finance Charges	\$23,061	\$25,000
0	0	0	4572	Penalties	0	0
0	0	0	4573	Commissions	0	0
0	0	0	4576	Late Rent Fees	0	0
0	0	0	4589	Reimburse Labor	0	0
0	0	0	6982	Fire Assessment Reimb.	0	0
0	0	0	6983	Payt inLieu of Taxes Reimburs	0	0
0	0	0	6990	Misc. Revenue	0	0
<b><u>\$11,070</u></b>	<b><u>\$12,500</u></b>	<b><u>(\$1,430)</u></b>		<b>Total Finance Revenue</b>	<b><u>\$23,061</u></b>	<b><u>\$25,000</u></b>
<b><u>\$15,648,241</u></b>	<b><u>\$15,255,824</u></b>	<b><u>\$392,417</u></b>		<b>TOTAL OPERATING REVENUE</b>	<b><u>\$25,917,842</u></b>	<b><u>\$26,468,198</u></b>