



Port Everglades Master Plan Update 2006

Phase II Workshop

The Board of County Commissioners of Broward County

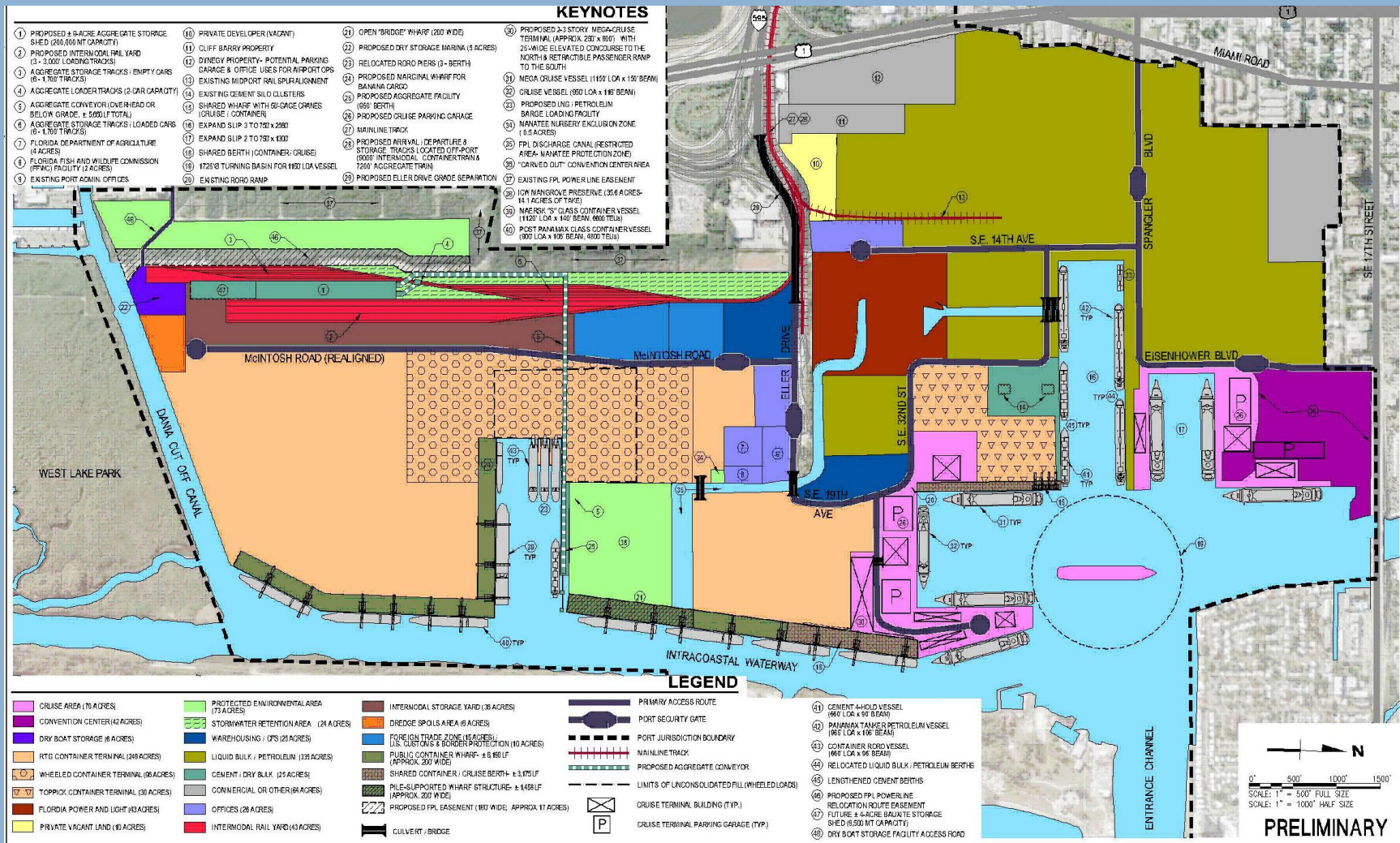
August 28, 2007

Economic Impact of Port Everglades' Cargo and Cruise Activities (2006)

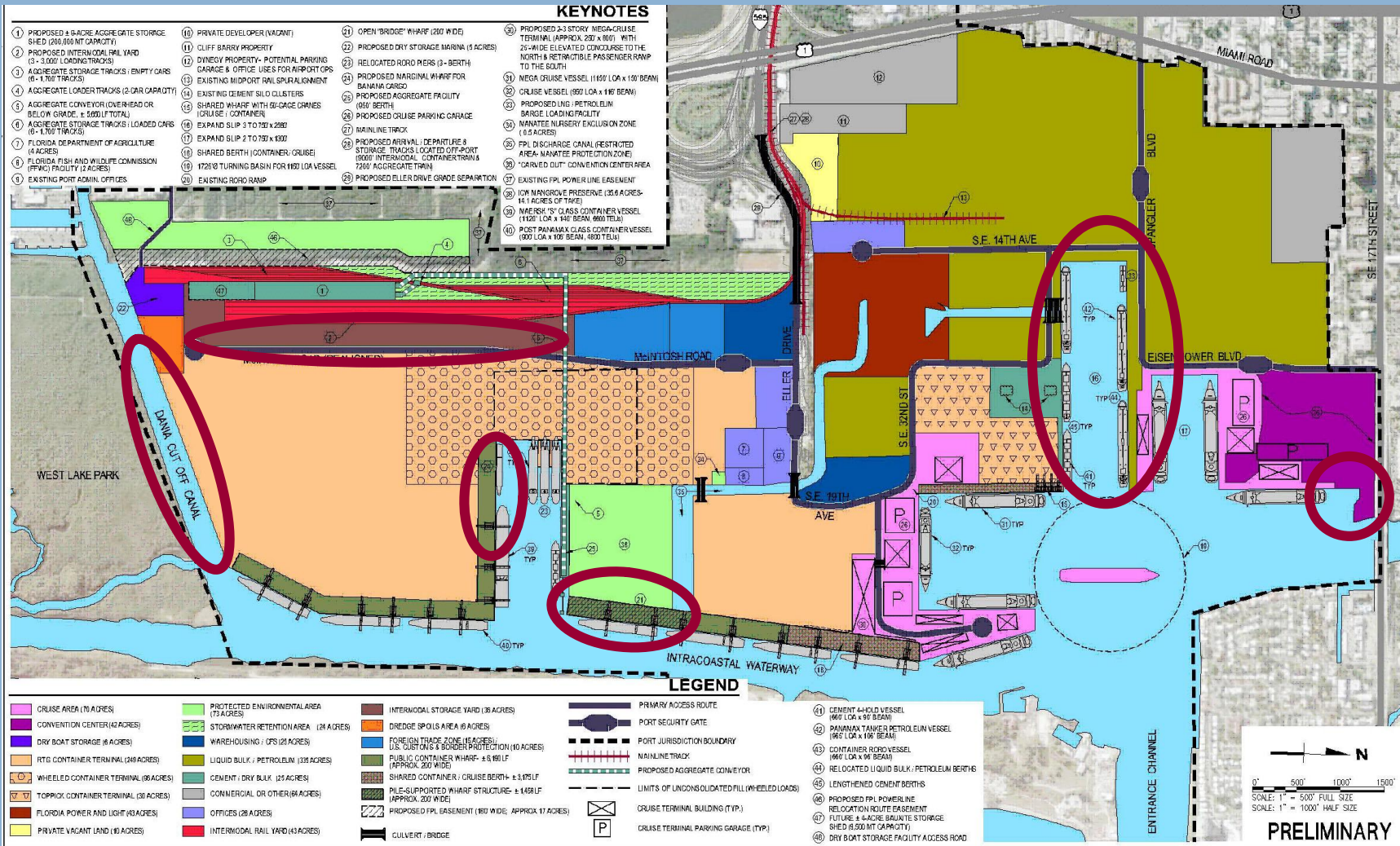
– Total Jobs:		188,203
§ Direct (local):	10,982	
§ Induced (local/regional):	10,021	
§ Indirect (local/regional):	6,525	
§ Related User (statewide):	160,676	
– Personal Income:		\$6.4 billion
§ Direct (local):	\$394,355,000	
§ Induced (local/regional):	\$1,077,899,000	
§ Indirect (local/regional):	\$249,507,000	
§ Related User (statewide):	\$4,680,533,000	
– Total Value of Economic Activities:		\$16.9 billion
– State and Local Taxes:		\$589.1 million



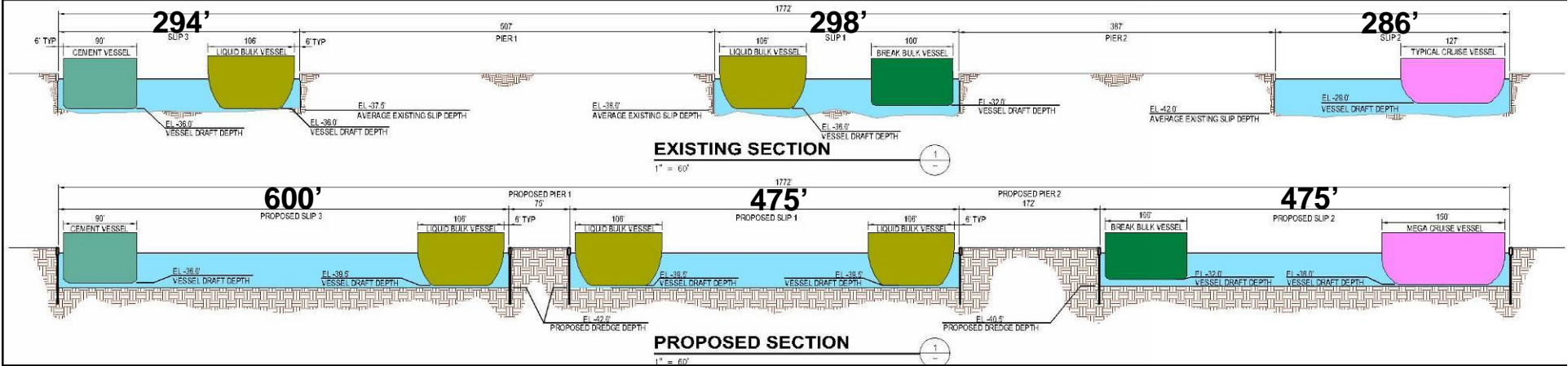
20-Year Vision Plan Presented at Workshop I



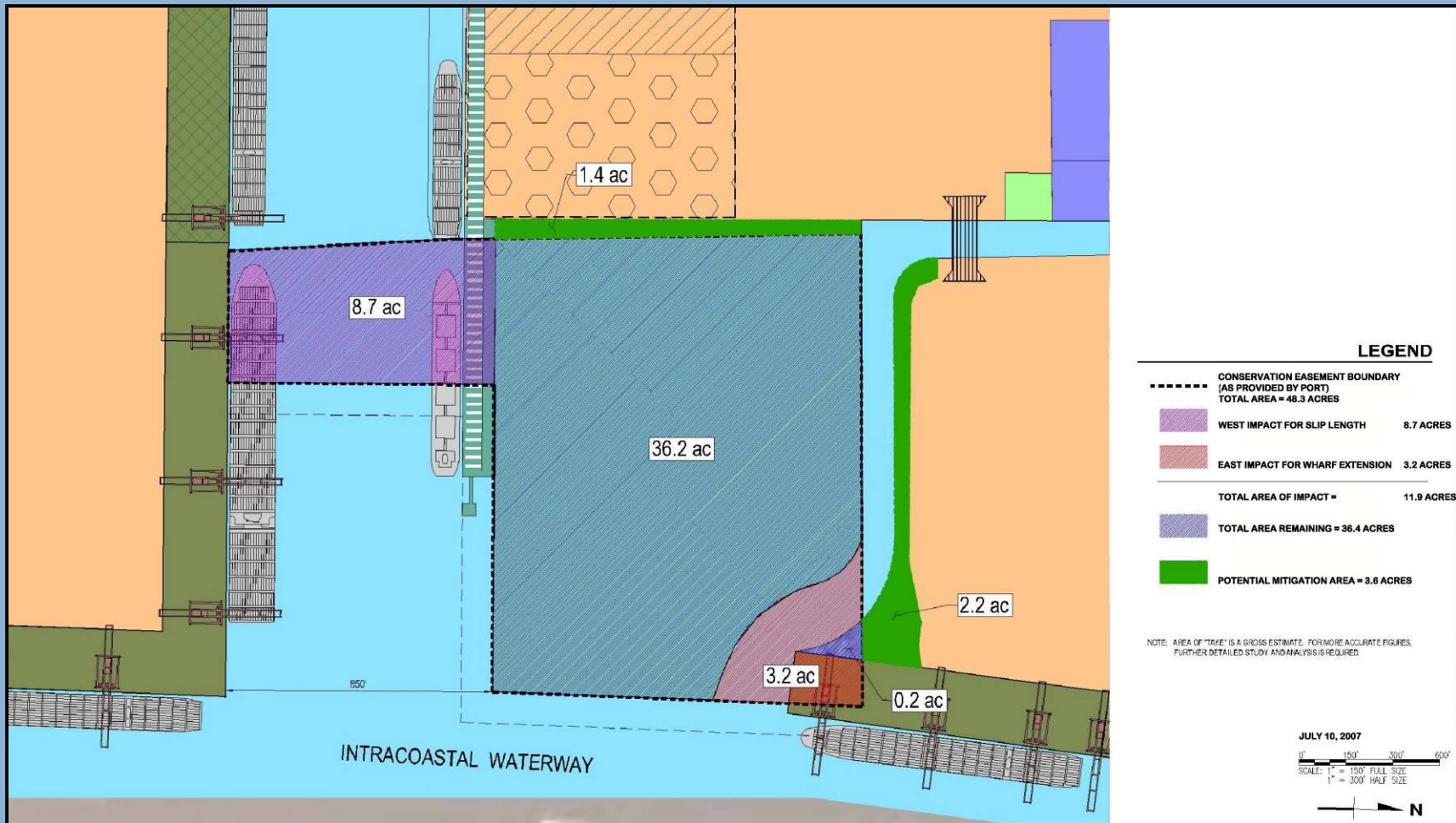
Tenant / Stakeholder Input 20-Year Vision Plan

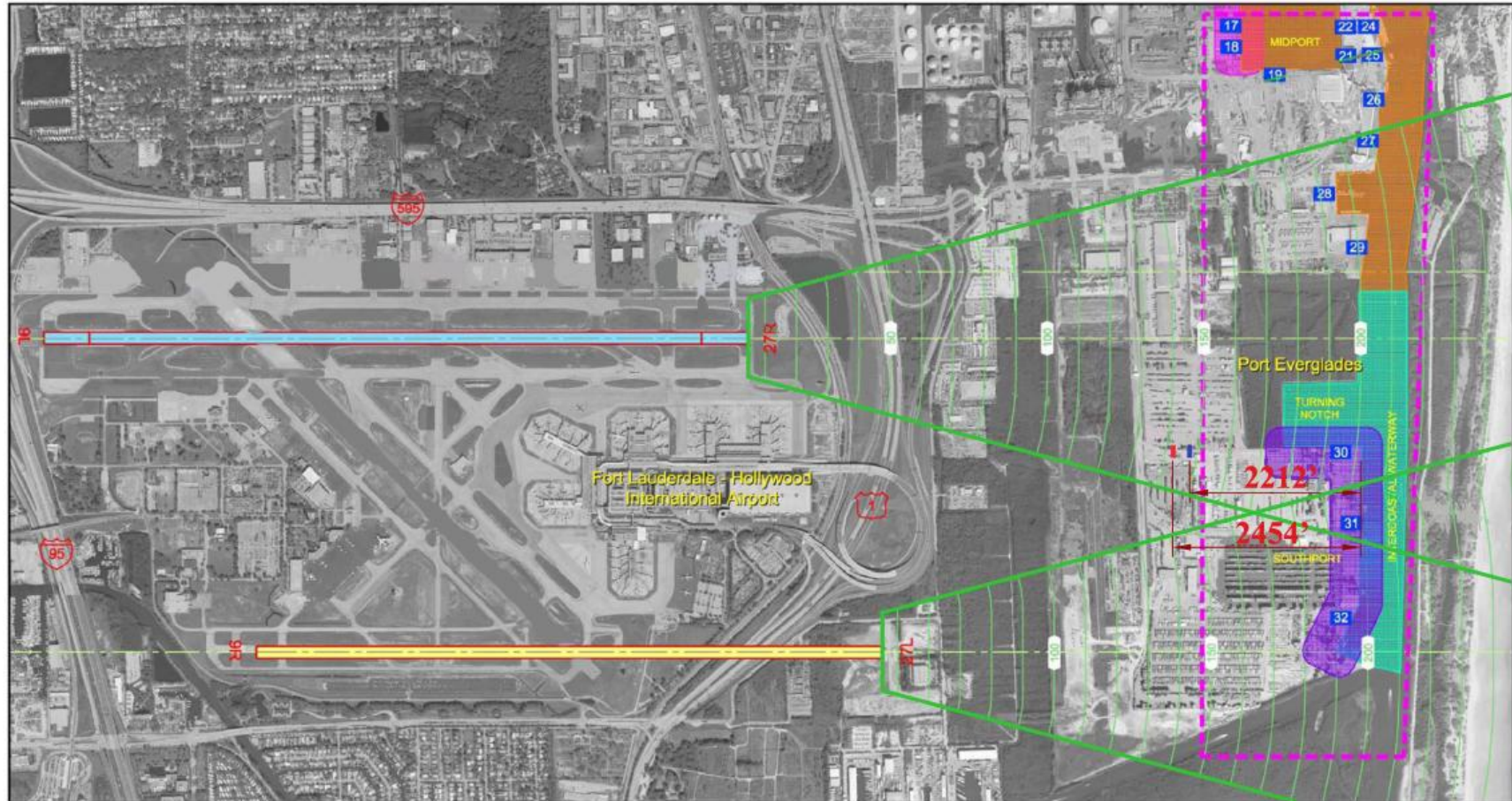


Northport Slip Study



Conservation Easement Impact Map





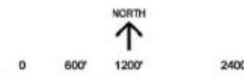
AIRPORT

- Existing runway
 - Proposed new runway / runway extension (1)
 - Decommissioned runway
 - Extended runway centerline
 - IFR departure obstacle clearance surface (TERPS)
 - Elevation contour of above-named surface, feet AMSL.
- Note: where overlap occurs, contours are for lowest surface.

SEAPORT

- Study area
- Berth number
- Crane envelope of operation, approximately 180 feet AMSL
- Crane envelope of operation, approximately 280 feet AMSL
- Cargo ships, up to 55m (180 feet) above waterline
- Cruise ships, up to 62m (203 feet) above waterline

- WESTERN LIMIT OF CRANE W / SUSAN MAERSK
- WESTERN LIMIT OF CRANE W / O SUSAN MAERSK



DRAFT
November 16, 2006

Figure 6
CRITICAL TERPS DEPARTURE SURFACES OVER STUDY AREA PROPOSED AIRFIELD DEVELOPMENT
Airspace Obstruction Study
Port Everglades Cranes and Ships
Fort Lauderdale-Hollywood International Airport
November 2006
JACOBS CONSULTANCY
Airport Management Consulting

20-Year Vision Plan



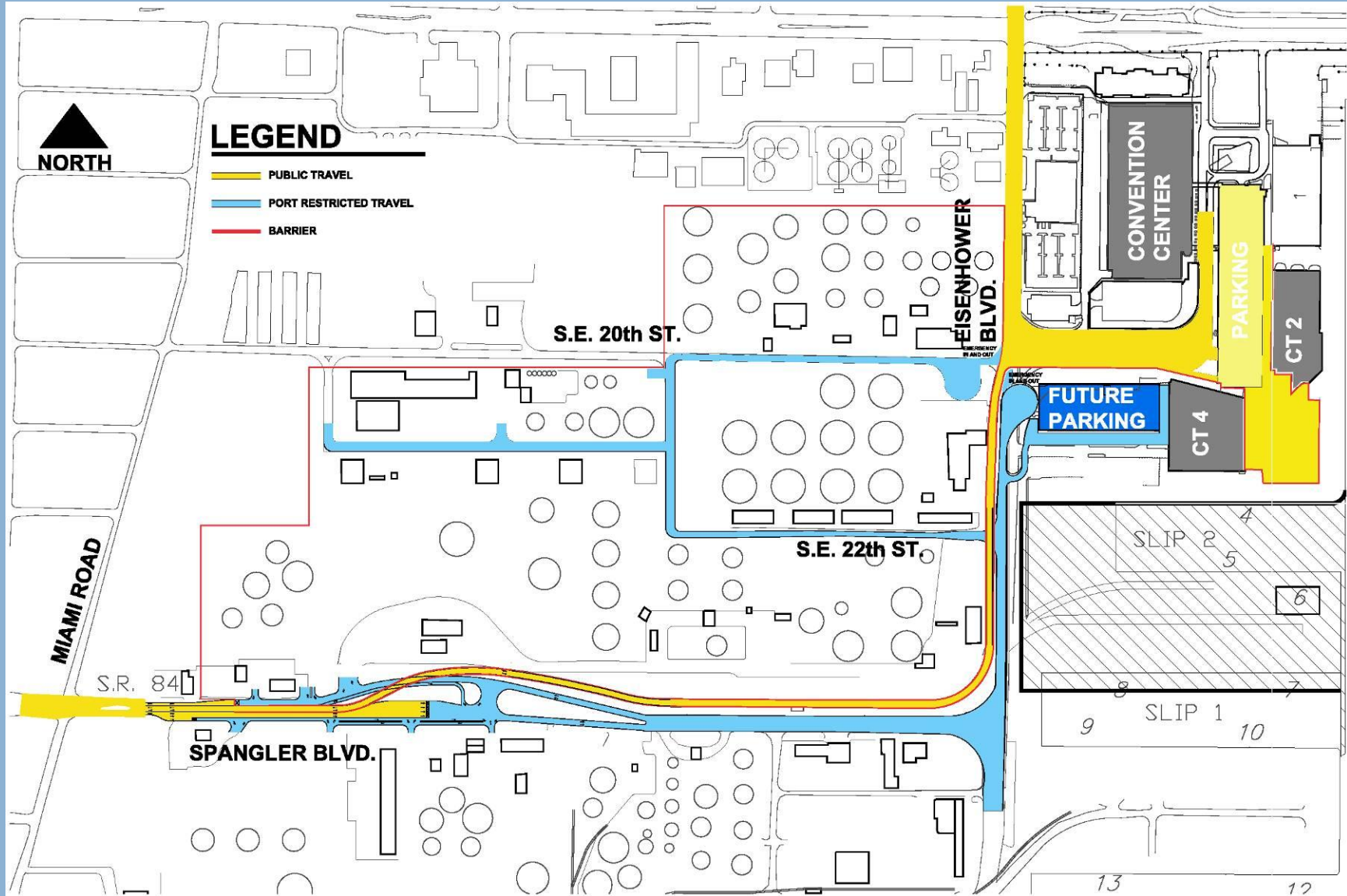
5-Year Vision Plan Goals

	Berth Length (FT)	Berths Required (rounded)	Terminal Area (gross acres)
Container Terminals			
RTG Operations	1000	6.1 (6)	89
RORO (wheeled)	700	1.7 (2)	50
Bananas (wheeled)	650	0.8 (1)	4.4
Non-Container Cargo Terminals			
General Cargo	700-900	1.1 (1)	7.1
Cement	750	1.4 (2)	6.7
Aggregate	900	0.6 (1)	1.8
Cruise Terminals	1000-1200	8	64
Petroleum Terminals	3 vessel/1 barge		357

5-Year CIP



Conceptual By-Pass Road



– Northport Improvements	Project Cost (\$ million)
• CT 2 Renovations _____	1.7
• CT 4 Redevelopment/ Expansion _____	13.0
• Molasses Tank Reuse RFP _____	0.0
• Bypass Road _____	19.0
• FTZ / Warehouse RFP _____	10.3
• Relocate Public Works/Port Maintenance _____	2.0
– Midport Improvements	
• Midport Roadway Expansion _____	2.3
• Berth 16-17 Crane Replacement _____	24.0
• Demo Transit Shed 16 / Reconfigure Terminal _____	0.8
• CT 18 Redevelopment / Expansion _____	37.4
• Midport Parking Garage _____	30.8
• Day Cruise Pier / Terminal Relocation / Addition _____	17.2
• CT 19 Expansion _____	6.7
• FPL Discharge Canal Bridge _____	7.2
• CT 21/22 Expansion _____	22.0
– Southport Improvements	
• Phase 1 Turning Notch Expansion _____	48.7
• Southport Phase VIII _____	16.5
• McIntosh Loop Road _____	7.8
• Dry Stack Marina RLI _____	0.0
• Aggregate Terminal & Rail Yard Facility _____	55.0
• ICTF Rail (Phase 1 for import crushed rock facility) _____	8.4
TOTAL	\$330.80

5-Year CIP Master Plan Project List

	2008	2009	2010	2011	2012	Total
– Northport Improvements						
• CT 2 Renovations		.2	1.5			1.7
• CT 4 Redevelopment/ Expansion		13.0				13.0
• Molasses Tank Reuse RFP	0.0					0.0
• Bypass Road	1.9	17.1				19.0
• FTZ / Warehouse RFP		10.3				10.3
• Relocate Public Works/Port Maintenance		2.0				2.0
– Midport Improvements						
• Midport Roadway Expansion	2.1	0.2				2.3
• Berth 16-17 Crane Replacement				24.0		24.0
• Demo Transit Shed 16 / Reconfigure Terminal		0.8				0.8
• CT 18 Redevelopment / Expansion	4.9	32.5				37.4
• Midport Parking Garage	2.0	28.8				30.8
• Day Cruise Pier / Terminal Relocation / Addition			1.2	16.0		17.2
• CT 19 Expansion	6.7					6.7
• FPL Discharge Canal Bridge	4.0	3.2				7.2
• CT 21/22 Expansion			2.0	5.0	15.0	22.0
– Southport Improvements						
• Phase 1 Turning Notch Expansion				11.0	37.7	48.7
• Southport Phase VIII	16.5					16.5
• McIntosh Loop Road	4.6	1.2		2.0		7.8
• Dry Stack Marina RLI	0.0					0.0
• Aggregate Terminal & Rail Yard Facility					55.0	55.0
• ICTF Rail (Phase 1 for import crushed rock facility)	.5		2.7	5.3		8.4
TOTAL	43.2	109.1	7.4	63.3	107.8	330.8

Cost (\$ million)

5-Year Capital Improvement Plan (CIP) Year 2008 to 2012

Cost (\$ million)

	2008	2009	2010	2011	2012	TOTAL
General Infrastructure Improvements	8.0	2.8	1.5	1.5	1.5	15.3
Master Plan Projects	43.2	109.1	7.4	63.3	107.8	330.8
ACOE Dredging Program		3.4		8.4	20.8	32.6
Other Port Capital Improvements (Maintenance, Renewal and Replacement)	7.2	8.5	5.4	4.2	4.2	29.5
TOTAL	58.4	123.8	14.3	77.4	134.3	408.2

Funding the Five-Year Capital Improvement Plan (CIP)

Years 2008 - 2012		
▼	\$408.2	
▼	\$305.0	U Debt Funding: \$103.2
▼	\$234.1	P Private Investment: \$70.9
▼	\$185.4	G Grants: \$48.7
		I Internal Revenue: \$185.4

(In \$ Millions)

Internal Revenue Breakdown Year 2008 to 2012

	2008	2009	2010	2011	2012	Total
By Existing Infrastructure	16.500	16.995	17.505	18.030	18.571	87.601
By Previous Funding	21.616	4.047	0.000	16.000	0.000	41.663
By New Project Net Revenue	0.000	0.569	6.080	12.161	12.161	30.971
By Cost Recovery	3.060	11.220	11.220	12.620	15.620	53.740
By Future Grants		2.500	2.500	2.500	2.500	10.000
Less Debt Payment		(7.840)	(7.840)	(8.940)	(8.940)	(33.560)
Less Dynegy Payment						(5.000)
						185.415

(in \$ Million)

10-Year Vision Plan Goals

	Berth Length (FT)	Berths Required (rounded)	Terminal Area (gross acres)
Container Terminals			
RTG Operations	1000	5.7 (6)	99
RORO (wheeled)	700	2.1 (2)	60
Bananas (wheeled)	650	0.6 (1)	4.5
Non-Container Cargo Terminals			
General Cargo	700-900	1.3 (1+)	7.7
Cement	750	1.5 (2)	7.3
Aggregate	900	0.8 (1)	2.6
Cruise Terminals	1000-1200	8	64
Petroleum Terminals	3 vessel/1 barge		357

10-Year Vision Plan



10-Year Vision Plan – Master Plan Projects

– Northport Terminal Improvements	Project Cost (\$ million)
• CT 4 Parking Garage _____	<u>37</u>
• Slip 2 Expansion _____	<u>90</u>
• Petroleum Barge Slip _____	<u>24</u>
– Midport Terminal Improvements	
• Construct Midport Cruise Intermodal Facility - Phase I _____	<u>80</u>
• Expand Container Terminal Area _____	<u>15</u>
• Construct Berth; Fill Tracor Basin _____	<u>25</u>
• Crane Procurement for Berths 28-29 (four 100-gage cranes) _____	<u>40</u>
• Realign FPL Discharge Canal _____	<u>10</u>
• Construct CT-27 _____	<u>35</u>
• Demo CT-29 _____	<u>1</u>
– Southport Terminal Improvements	
• Phase 2 Turning Notch Expansion _____	<u>60</u>
• Relocate Banana and Other General Cargoes _____	<u>10</u>
• Construct ICTF Track and Storage Yard _____	<u>50</u>

TOTAL \$ 477

10-Year Vision Development Program Year 2013 to 2016

	Cost (\$ million)
– General Infrastructure Improvements	20
– Master Plan Projects	477
– ACOE Dredging Program	160
– Other Port Capital Improvements (Maintenance, Renewal and Replacement)	100
TOTAL	\$757

20-Year Vision Plan Goals

	Berth Length (FT)	Berths Required (rounded)	Terminal Area (gross acres)
Container Terminals			
RTG Operations	1000	6.8 (7)	140
RORO (wheeled)	700	2.9 (3)	89
Bananas (wheeled)	650	0.6 (1)	5.2
Non-Container Cargo Terminals			
General Cargo	700-900	1.5 (2)	8.8
Cement	750	1.7 (2)	8.3
Aggregate	900	0.9 (1)	4.2
Cruise Terminals	1000-1200	8	64
Petroleum Terminals	3 vessel/1 barge		357

20-Year Vision Plan



20-Year Vision Plan – Master Plan Projects

– Northport Improvements	Project Cost (\$ million)
• Reconfigure Slips 1 and 3 _____	140
– Midport Improvements	
• Construct Midport Cruise Passenger Skyway _____	80
• CT 24/25 Expansion _____	40
– Southport Improvements	
• Begin RTG Terminal Conversions _____	30
• Extend Berth 33A _____	20
• Crane Procurement for Berth 33A _____	10
• DCC Ro/Ro Development _____	50
TOTAL	\$370

20-Year Vision Development Program

Year 2017 to 2026

	Cost (\$ million)
– General Infrastructure Improvements _____	<u>20</u>
– Master Plan Projects _____	<u>370</u>
– ACOE Dredging Program _____	<u>160</u>
– Other Port Capital Improvements _____	<u>280</u>
(Maintenance, Renewal and Replacement) _____	
TOTAL	<u>\$830</u>

PROJECT DECISION MATRIX

CRUSHED ROCK (AGGREGATE) FACILITY

Total Construction Cost	ROI	Net Present Value	Economic Impact			Environmental Impact				Customer / Regulatory Need		
			Total Income (\$1,000)	Jobs	Taxes	High	Mid	Low	Permit Required	High	Mid	Low
\$63.4 M	13.7%	\$8.4 M										
			76,035	1,215	6,995	X			X	X		

CRUISE TERMINAL 18 EXPANSION

Total Construction Cost	ROI	Net Present Value	Economic Impact			Environmental Impact				Customer / Regulatory Need		
			Total Income (\$1,000)	Jobs	Taxes (\$1,000)	High	Mid	Low	Permit Required	High	Mid	Low
\$37.4 M	26%	\$44 M										
			172,127	3,844	15,857			X		X		