

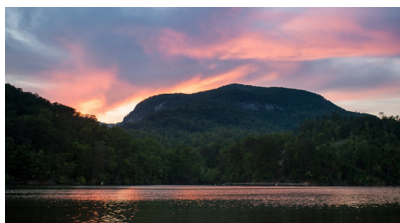
Tucked away at the base of the Blue Ridge Mountains lies one of the most romantic wedding destinations in North Carolina...

## Fall in Love with Rutherford County



2018 WEDDING GUIDE

Lake Lure &  
the Blue Ridge Foothills  
Rutherford County, NC



SCENIC



Photo by Lindsey Bess Photography



Photo by Southern Skies Photography



MEMORABLE



## *Happily Ever After Starts Here*

Make your wedding dreams a reality and fall in love with a place amidst breathtaking landscapes, pristine mountain air, and serene lakes and rivers.

Conveniently located between Charlotte and Asheville, and just an hour north of Spartanburg, the quaint towns of Rutherford County present the quintessential location for saying "I Do".

Nearby regional and international airports make the journey simple for all out of town guests to join in on the festivities and the optimal gateway to a bevy of regional attractions.

The four-season climate offers an abundance of opportunities for choosing the ideal time of year to walk down the aisle, with moderate temperatures that make the winters a little warmer and the summers a little cooler than surrounding areas.

Be welcomed by friendly faces, embraced by southern hospitality, and discover the warmth of a small-town lifestyle as you prepare for the one of the biggest milestones of your life.

Plan to have the ceremony and reception all in one location, housing all the comforts the happy couple and wedding party desire at one of our luxury resorts and inns, both of which can accommodate larger groups.

At **Rumbling Bald Resort**, couples can choose a ceremony beachside under a gazebo or open-air pavilion, and later dance the night away on the Lakeview Terrace. For smaller groups, opt for the Garden room and patio.

Famous for its role in the film *Dirty Dancing*, **The 1927 Lake Lure Inn & Spa** offers awe-inspiring weddings in a variety of styles. Ceremony options range from the poolside veranda terrace, lakeside gazebo, and the lavish grand lobby. Gather your guests for an elegant affair and celebrate in one of the decadent dining rooms.

**Esmeralda Inn & Restaurant** and **The Firehouse Inn** both have all in one accommodations for smaller groups.

## *Resorts and Inns*



## Natural Settings

Natural settings provide beautiful escapes for your wedding getaway. Stage your special day surrounded by a cathedral of mountains and profess your love lakeside under the **Gazebo at Morse Park**.

Prefer a 75-mile panoramic view as your backdrop? At **Chimney Rock State Park** you can choose from the world's largest chimney, misting waterfall or a secluded forest edge to set the stage.

Embrace the ambiance of a rushing river at **Riverside Event Center** where the Rocky Broad River sets the perfect scene.

If green pastures, rustic elegance and a touch of country flair is more your scene try **The Pavilion at Cedar Creek Stables, New Beginnings Historic Farm** or **Zimmerwald Estate Barn & Grainery**, offering laid back receptions with idyllic views of barns, lakes and woodlands.



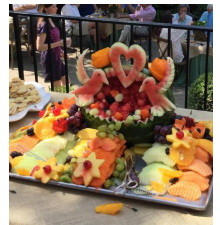
## Smaller Settings, Historic Flair

As one of the oldest counties in Western North Carolina, there are numerous historic venues for those that are looking for a vintage feel.

For intimate settings, plan to hold the nuptials close to local attractions. Chimney Rock's **Esmeralda Inn & Restaurant** specializes in groups of 20-80 in an upscale retreat that sits mountainside boasting a rustic log staircase and beautiful landscaped spaces.

In Historic downtown Rutherfordton you'll find **The Firehouse Inn**, an exquisite venue offering a stylish Garden Terrace and tent on the courtyard lawn for groups up to 75 and a Living Room perfect for accommodating up to 50 people.

**The 1927 Lake Lure Inn and Spa** as well as **New Beginnings Historic Farm**, previously mentioned, are also historic properties to consider.



## Event & Conference Centers

Rutherford County is versatile and hospitable providing the best service on a grand scale. At **Carolina Event & Conference Center** in Forest City, brides will be stunned by the gorgeous ballrooms designed with soaring ceilings and stone fireplaces plus an outdoor terrace with gardens. With on-site catering, this multimedia equipped facility can accommodate up to 500 guests.

**The Foundation Performing Arts Center** in Spindale is a multi-functional venue offering pristine space for 350-seated or 800-standing.

Opening this summer is **Yogi Bear's Jellystone Park**, a picturesque 500+ Camp-Resort in Golden Valley offering an ideal retreat for your all-inclusive rustic wedding getaway. **Riverside Event Center**, mentioned above is also an option.



For a full list of venues, lodging options, and wedding services visit us online at:

[VisitNCSmallTowns.com](http://VisitNCSmallTowns.com)



## INFORMATION ON VENUES FEATURED

### *Chimney Rock Village*

#### **Esmeralda Inn & Restaurant**

910 Main Street

828-625-2999

[TheEsmeralda.com](http://TheEsmeralda.com)

### **Chimney Rock State Park**

431 Main Street

828-625-9611

[ChimneyRockPark.com](http://ChimneyRockPark.com)

### *Lake Lure*

#### **The 1927 Lake Lure Inn & Spa**

2771 Memorial Highway

828-625-2525

[LakeLure.com](http://LakeLure.com)

### **Rumbling Bald Resort**

112 Mountain Boulevard

828-694-3000

[RumblingBald.com](http://RumblingBald.com)

### **The Pavilion at Cedar Creek Stables**

542 Cedar Creek Road

828-625-2811

[CedarCreekStables.com](http://CedarCreekStables.com)

### **Riverside Event Center**

3105 Memorial Highway

828-436-5130

[Riverside-Events.com](http://Riverside-Events.com)

### **Gazebo at Morse Park Meadows**

2926 Memorial Highway

828-625-9983

[TownofLakeLure.com](http://TownofLakeLure.com)

### *Rutherfordton*

#### **The Firehouse Inn**

134 N. Washington Street

828-286-9030

[TheFirehouseInn.com](http://TheFirehouseInn.com)

### **New Beginnings Historic Farm**

5370 US-74 ALT

828-275-1683

[NewBeginningsFarms.com](http://NewBeginningsFarms.com)

### *Spindale*

#### **The Foundation Performing Arts Center**

286 ICC Loop Road

828-286-9990

[FoundationShows.org](http://FoundationShows.org)

### *Forest City*

#### **Carolina Event and Conference Center**

374 Hudlow Road

828-245-8873

[CarolinaEvent.org](http://CarolinaEvent.org)

### *Ellenboro*

#### **Zimmerwald Estate Barn and Grainery**

1001 Romey Campbell Road

704-472-4144

On Facebook @TheZimmerwaldEstate

### *Bostic*

#### **Yogi Bear's Jellystone Park Camp-Resort**

#### **Golden Valley**

164 Girl Scout Camp Road

828-417-0086

[GoldenValleyEvents.com](http://GoldenValleyEvents.com)

