

MADE IN AMERICA

Tours event

20th anniversary

June 13-16, 2018



www.yorkpa.org/events/made-in-america-event

Explore
York[®]
www.yorkpa.org
Factory Tour Capital of
the World[®]

Made in America Kickoff Event

WHAT:

Made in America Tours Event 20th Anniversary kicks off at Harley-Davidson Motor Company, Vehicle Operations. WITF, Smart Talk Road Trip will be broadcasting live. Reservations are required to attend the kick-off and can be made at www.witf.org/community/witf-events.

(Please note if you are taking the tour following the broadcast you must wear fully-enclosed, low-heeled (one inch or less) shoes. Children under the age of 12 are welcome in the Tour Center but are not allowed on the factory tour. Visitors under the age of 18 must be accompanied by an adult)

WHEN:

9 a.m. Wednesday, June 13, 2018

WHERE:

Harley-Davidson Motor Company, Vehicle Operations. Route 30 & Eden Road.

DETAILS:

Attendees will also be entered to win a special gift basket from the York County Convention & Visitors Bureau. Reservations must be made in advance.

FACTORY TOURS AND MORE

From the pretzels you enjoy on game day to the roar of a Harley on the highway to the pitch-perfect sounds of the violin in the local symphony orchestra, part of York County, PA, is all around you.

All those amazing products and more come to life here in the Factory Tour Capital of the World®, where we take pride in our artisanship big and small. We're proud to invite you to meet the people and explore the places behind your favorite products during the Made in America Tours 20th Anniversary event running June 13-16.

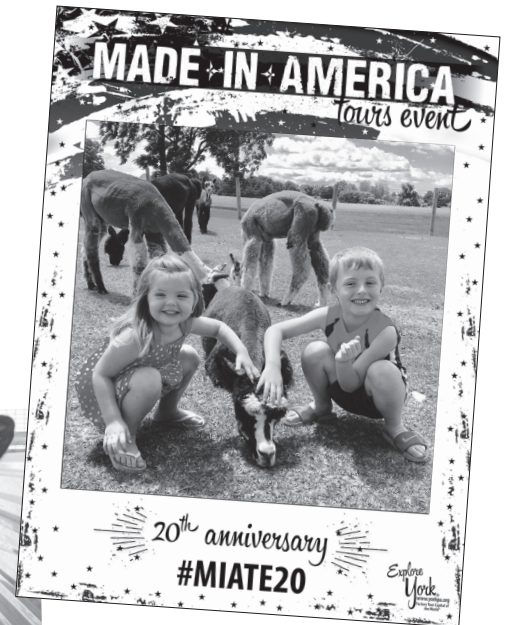
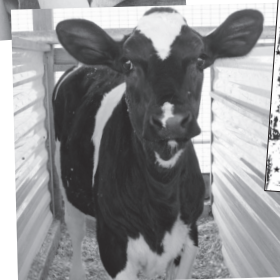
From expansive factory floors to visitor-friendly shops, this celebration of manufacturing ingenuity will take you behind the scenes at Snyder's of Hanover, Harley-Davidson Motor Company, Vehicle Operations, Bluett Bros. Violins and many more.

You'll see artisans at work at George's Furniture, where handcrafted tables, chairs and more all bear the signatures of their proud creators. Or watch as students learn the intricate trade of watch and clock making at the York Time Institute, and sample potato chips fresh off the line at Martin's Snacks, a tasty experience unique to York.

With so much to see, you'll want to stay a while. Enjoy the unbeatable combination of our many free factory tours, engaging attractions, affordable lodging rates, and great dining and shopping that York County offers.

Get all the information you need to plan your Made in America getaway at www.yorkpa.org.

Connect with us @ExploreYorkPA.
Look for the "selfie frame" and check in at the location and share your photos using #MIATE20 and #ExploreYorkPA.



Made in America Tours Event 20th Anniversary is promoted and organized by the York County Convention & Visitors Bureau, the Official Tourist Promotion Agency for York County, PA.

The York County Convention & Visitors Bureau's Mission is to maximize tourism expenditures and their economic impact in York County, PA, through comprehensive tourism sales and marketing programs.

The York County CVB's Vision is for a York County where tourism is recognized for the value of its economic impact and its role in raising the profile of York County as a sought-after destination. Visitors spend nearly \$1 billion in York County annually.

1-888-858-YORK (9675) | www.yorkpa.org

MADE IN AMERICA FAQs

When: June 13-16, 2018

What: Made in America Factory Tours offer exclusive, behind-the-scenes looks at the making of some of America's favorite products. Step onto manufacturing floors and into artisan shops for a first-hand look at American craftsmanship.

Would my children enjoy this?

Many of our tours are appropriate for children. Please refer to the listings on pages 7-11 for additional details.

Do I need to make reservations?

Reservations are not always required. However, some tours do ask that you call ahead to reserve space. Please carefully review the listings for the locations you wish to visit. Those that require reservations will be noted. Those with no reference to reservations generally take visitors on a first-come, first-served basis.

Is there an admission charge?

There is no overall admission charge for York County's Made in America Tours, but a few of the sites do charge nominal fees to help offset operating costs. Look for the admission icon (\$) next to tours and attractions with admission fees. Unless otherwise noted, the tour or attraction is free.

What should I wear?

Layers and comfortable shoes are recommended, but avoid sandals, flip-flops and high heels because safety regulations at many factories forbid them. Some tours require closed-toe shoes. If a tour requires items such as goggles or hairnets, they will be provided.

Where do I turn if I have questions?

Our travel counselors will be happy to help plan your York County experience. Call us at 1-888-858-YORK (9675) between the hours of 7:30 a.m. and 2 p.m. EST Tuesday-Sunday. You can also e-mail us at marketing@yorkpa.org or info@yorkpa.org. Visit www.yorkpa.org for more information.

Can Made In America accommodate group tours or motorcoaches?

Yes, but advance reservations are required for motorcoach groups. Look for the motorcoach icon (M) next to listings for factory tours and attractions that are ready to welcome your group during the event. To learn more, contact Patrick Bourque at patrick@yorkpa.org or at 1-888-858-YORK ext. 110.



STAY in York County, PA

SPECIAL OVERNIGHT RATES & GETAWAY PACKAGES AVAILABLE

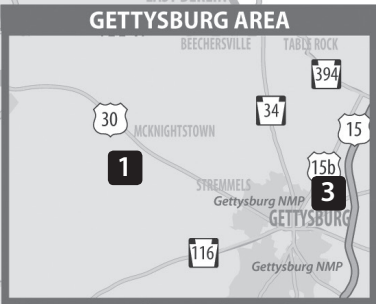
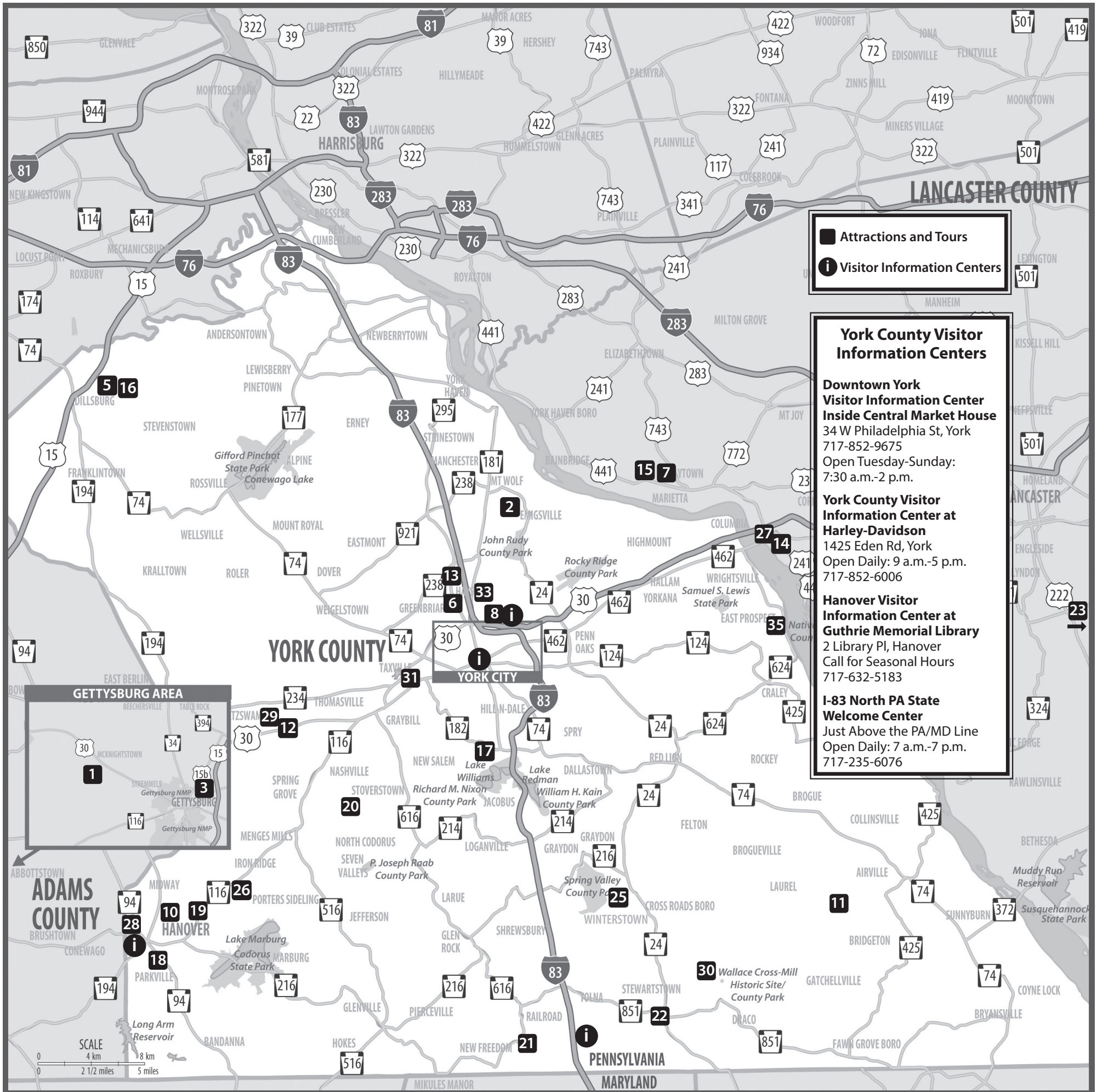
Area hotels and bed and breakfasts offer special overnight rates and packages to help you plan your Made In America getaway. Visit www.yorkpa.org or call 1-888-858-YORK for additional information about these special offers.

ONLINE TRAVEL PLANNING HELP

Also visit our website to book your stay online and find out more about what York County, PA, has in store. Planning your York County getaway is just a few clicks away.

GO MOBILE

Our mobile website uses Google Maps to pinpoint hotels, events, shopping, restaurants and other attractions near you while you're here. Visit www.yorkpa.org on your smartphone to chart your visit on the go!



Attractions and Tours

Visitor Information Centers

York County Visitor Information Centers

Downtown York Visitor Information Center Inside Central Market House
34 W Philadelphia St, York
717-852-9675
Open Tuesday-Sunday: 7:30 a.m.-2 p.m.

York County Visitor Information Center at Harley-Davidson
1425 Eden Rd, York
Open Daily: 9 a.m.-5 p.m.
717-852-6006

Hanover Visitor Information Center at Guthrie Memorial Library
2 Library Pl, Hanover
Call for Seasonal Hours
717-632-5183

I-83 North PA State Welcome Center
Just Above the PA/MD Line
Open Daily: 7 a.m.-7 p.m.
717-235-6076

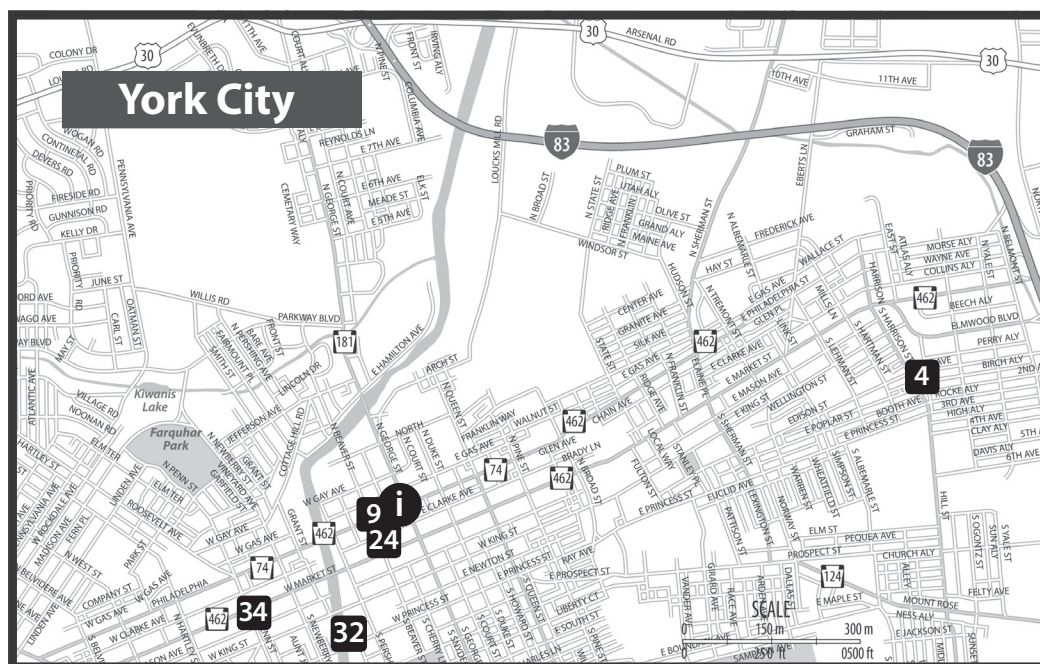
MADE IN AMERICA

PARTICIPATING LOCATIONS

- 1 Adams County Winery
- 2 Alpacas of York
- 3 Battlefield Brew Works & Spirits of Gettysburg Distillery
- 4 Bluett Bros. Violins
- 5 Castle Creek Farm
- 6 Electronic Manufacturing Services Group
- 7 George's Furniture Inc.
- 8 Harley-Davidson Motor Company, Vehicle Operations
- 9 Herb & Herd
- 10 Legacy Athletic
- 11 Ma & Pa Railroad Heritage Village
- 12 Martin's Snacks
- 13 Microtrac Inc.
- 14 National Watch & Clock Museum
- 15 Nissley Vineyards
- 16 Paulus Orchards
- 17 Perrydell Farm Dairy, Inc.
- 18 Revonah Pretzel LLC
- 19 Snyder's of Hanover Factory Store
- 20 Sonnewald Natural Foods
- 21 Steam Into History
- 22 Stewartstown Railroad Company
- 23 Strasburg Rail Road
- 24 Sunrise Soap Company
- 25 Teaching Museum for Fiber Arts and Textiles
- 26 Thunder Ridge Vineyards
- 27 Turkey Hill Experience
- 28 Utz Quality Foods, LLC
- 29 Walk-Le Farm
- 30 Wallace-Cross Mill
- 31 Weldon Solutions
- 32 York County History Center Agricultural & Industrial Museum
- 33 York County Solid Waste Authority/York County Resource Recovery Center
- 34 York Time Institute
- 35 Zimmerman Center for Heritage

"Stop at Perrydell Farm and Dairy to visit with cows and baby calves. If you time it just right, you can even watch the cows being milked or the calves being fed. Treat yourself to a hand-dipped ice cream cone before you leave."

- Erin Gifford, Kidventurous



SCHEDULE OF EVENTS

Wednesday, June 13, 2018

8 a.m.-4 p.m. George's Furniture Inc.
8 a.m.-4 p.m. Utz Quality Foods, LLC
8-10 a.m.; 1-5 p.m. Walk-Le Farm
Tour Center Open: 8 a.m.-4 p.m. Harley-Davidson Motor Company, Vehicle Operations Tours: 9 a.m.-2 p.m.
9 a.m.-11:30 a.m. Revonah Pretzel LLC
9 a.m.-2 p.m. Martin's Snacks
9 a.m.-3 p.m. Electronic Manufacturing Services Group
9 a.m.-3 p.m. York Time Institute
9 a.m.-6 p.m. Perrydell Farm Dairy, Inc.
9 a.m.-6 p.m. Sunrise Soap Company
9:30 a.m.-2 p.m. Snyder's of Hanover Factory Store
10 a.m.-2 p.m. Legacy Athletic
10 a.m.-3 p.m. Alpacas of York
10 a.m.-4 p.m. Turkey Hill Experience
10 a.m.-4 p.m. York County History Center Agricultural & Industrial Museum
10 a.m.-4 p.m. Zimmerman Center for Heritage
10 a.m.-4:30 p.m. Adams County Winery
10 a.m.-4:45 p.m. Nissley Vineyards
10 a.m.-5 p.m. National Watch & Clock Museum
10:30 a.m. & 4 p.m. Sonnewald Natural Foods
11 a.m.-3 p.m. Paulus Orchards
Noon-1 p.m. Strasburg Rail Road
4-7 p.m. Battlefield Brew Works & Spirits of Gettysburg Distillery

Thursday, June 14, 2018

8 a.m.-4 p.m. George's Furniture Inc.
8 a.m.-4 p.m. Utz Quality Foods, LLC
8-10 a.m.; 1-5 p.m. Walk-Le Farm
Tour Center Open: 8 a.m.-4 p.m. Harley-Davidson Motor Company, Vehicle Operations Tours: 9 a.m.-2 p.m.
9 a.m.-11:30 a.m. Revonah Pretzel LLC
9 a.m.-3 p.m. Electronic Manufacturing Services Group
9 a.m.-3 p.m. York Time Institute
9 a.m.-6 p.m. Perrydell Farm Dairy, Inc.
9 a.m.-6 p.m. Sunrise Soap Company
9:30 a.m.-2 p.m. Snyder's of Hanover Factory Store
10-11:30 a.m.; 2-3:30 p.m. York County Solid Waste Authority/York County Resource Recovery Center
10 a.m.-2 p.m. Herb & Herd
10 a.m.-3 p.m. Alpacas of York
10 a.m.-4 p.m. Turkey Hill Experience
10 a.m.-4 p.m. York County History Center Agricultural & Industrial Museum
10 a.m.-4 p.m. Zimmerman Center for Heritage
10 a.m.-4:30 p.m. Adams County Winery
10 a.m.-4:45 p.m. Nissley Vineyards
10 a.m.-5 p.m. National Watch & Clock Museum
10:30 a.m. & 4 p.m. Sonnewald Natural Foods
11 a.m.-3 p.m. Paulus Orchards
11 a.m.-5 p.m. Thunder Ridge Vineyards
Noon-1 p.m. Strasburg Rail Road
Noon-4 p.m. Bluett Bros. Violins
4-7 p.m. Battlefield Brew Works & Spirits of Gettysburg Distillery

Friday, June 15, 2018

8 a.m.-2 p.m. George's Furniture Inc.
8-10 a.m.; 1-5 p.m. Walk-Le Farm
Tour Center Open: 8 a.m.-4 p.m. Harley-Davidson Motor Company, Vehicle Operations Tours: 9 a.m.-2 p.m.
9 a.m.-11:30 a.m. Revonah Pretzel LLC
9 a.m.-3 p.m. Electronic Manufacturing Services Group
9 a.m.-3 p.m. York Time Institute
9 a.m.-4 p.m. Weldon Solutions
9 a.m.-6 p.m. Perrydell Farm Dairy, Inc.
9 a.m.-7 p.m. Sunrise Soap Company
9:30 a.m.-2 p.m. Snyder's of Hanover Factory Store
10 a.m.-2 p.m. Microtrac Inc.
10 a.m.-2 p.m. Teaching Museum for the Fiber Arts & Textiles
10 a.m.-3 p.m. Alpacas of York
10 a.m.-4 p.m. Stewartstown Railroad
10 a.m.-4 p.m. Turkey Hill Experience
10 a.m.-4 p.m. York County History Center Agricultural & Industrial Museum
10 a.m.-4 p.m. Zimmerman Center for Heritage
10 a.m.-4:30 p.m. Adams County Winery
10 a.m.-4:45 p.m. Nissley Vineyards
10 a.m.-5 p.m. National Watch & Clock Museum
10 a.m.-6 p.m. Castle Creek Farm
10:30 a.m. & 4 p.m. Sonnewald Natural Foods
11 a.m.-3 p.m. Paulus Orchards
11 a.m.-3 p.m. Wallace-Cross Mill
11 a.m.-5 p.m. Ma & Pa Railroad Heritage Village
11 a.m.-5 p.m. Thunder Ridge Vineyards
Noon-1 p.m. Strasburg Rail Road
Noon-4 p.m. Bluett Bros. Violins
4-7 p.m. Battlefield Brew Works & Spirits of Gettysburg Distillery

Saturday, June 16, 2018

9 a.m.-10 a.m. Strasburg Rail Road
9 a.m.-3 p.m. York Time Institute
9 a.m.-6 p.m. Perrydell Farm Dairy, Inc.
9 a.m.-6 p.m. Sunrise Soap Company
10 a.m.-2 p.m. Adams County Winery
10 a.m.-2 p.m. Herb & Herd
10 a.m.-2 p.m. Teaching Museum for the Fiber Arts & Textiles
10 a.m.-3 p.m. Alpacas of York
10 a.m.-4 p.m. Steam Into History
10 a.m.-4 p.m. Stewartstown Railroad
10 a.m.-4 p.m. Turkey Hill Experience
10 a.m.-4 p.m. York County History Center Agricultural & Industrial Museum
10 a.m.-4 p.m. Zimmerman Center for Heritage
10 a.m.-4:45 p.m. Nissley Vineyards
10 a.m.-5 p.m. National Watch & Clock Museum
10 a.m.-6 p.m. Castle Creek Farm
10:30 a.m. & 3 p.m. Sonnewald Natural Foods
11 a.m.-3 p.m. Paulus Orchards
11 a.m.-3 p.m. Wallace-Cross Mill
11 a.m.-5 p.m. Ma & Pa Railroad Heritage Village
11 a.m.-5 p.m. Thunder Ridge Vineyards

1 Adams County Winery
251 Peach Tree Rd, Orrtanna, PA 17353
717-334-4631

21
www.adamscountywinery.com

We are PA's fifth oldest operating winery and we invite guests to visit us in our 1860s era bank barn, which is surrounded by rolling farmlands and orchards in beautiful Adams County. Guests will receive a tour of our winery and wine making area.

M

Wednesday: 10 a.m.-4:30 p.m.
Thursday: 10 a.m.-4:30 p.m.
Friday: 10 a.m.-4:30 p.m.
Saturday: 10 a.m.-2 p.m.

About the Tour:

- Tour Length: 20 minutes
- Guided Tour: Yes
- Minimum Age Requirement: No, but must be 21+ for wine tasting. Non-alcoholic beverages are also available.
- Motorcoaches: Yes, up to 2 at once.

2 Alpacas of York
445 Blossom Dr, Mount Wolf, PA 17347
717-495-8979

www.alpacasofyork.com

Visitors are welcome to visit with the alpacas and Tie, our llama, and feed them treats in the barnyard and pastures. We will have staff and/or 4-H kids on hand in these areas to answer questions. There is also a farm store with items made from our alpaca fleece.

M

Wednesday: 10 a.m.-3 p.m.
Thursday: 10 a.m.-3 p.m.
Friday: 10 a.m.-3 p.m.
Saturday: 10 a.m.-3 p.m.

About the Tour:

- Tour Length: As long as guests would like to stay & enjoy the farm
- Guided Tour: No
- Public Restrooms: Port-o-potty
- Handicap-Accessible: Yes, most areas
- Motorcoaches: Yes, please give notice in advance

3 NEW! Battlefield Brew Works & Spirits of Gettysburg Distillery

248 Hunterstown Rd, Gettysburg, PA 17325
717-398-2907

www.spiritsofgettysburgdistillery.com

Battlefield Brew Works: See our hot side vessels, three fermenters, and five bright tanks and hear a discussion of brewery ingredients and techniques to produce nine different beers.
Spirits of Gettysburg Distillery: See our 60 gallon production still, two columns and hear a discussion of distilling technique and production considerations for a variety of spirits.

21

M

Wednesday: 4-7 p.m.
Thursday: 4-7 p.m.
Friday: 4-7 p.m.

About the Tour:

- Tour Length: 20-25 minutes
- Guided Tour: Yes
- Handicap-Accessible: No, in portions of manufacturing space
- Conditions/Restrictions: Must be 21+ for samples of beer (nine kinds) and spirits (aged rye, vodka, gin, rum, brandy, and liqueurs). Soda (root beer and ginger ale) also available for purchase.
- Motorcoaches: Yes, broken in two groups to tour production space.

4 Bluett Bros. Violins
122 Hill St, York, PA 17403
717-825-4263

www.bluettbros-violins.com
Bluett Bros Violins produces handmade stringed instruments including the violin family, as well as mandolins and guitars and various Baroque instruments. The tour includes an overview of the art of luthiery with examples of instruments in various stages of construction.

M

Thursday: Noon-4 p.m.
Friday: Noon-4 p.m.

About the Tour:

- Tour Length: 30 minutes
- Guided Tour: Yes
- Minimum Age Requirement: Minimum age 10 years or older
- Admission Charge: \$5/person
- Conditions/Restrictions: Tours by appointment only
- Motorcoaches: Yes, only half at a time

5 NEW! Castle Creek Farm
529 W Siddonsburg Rd, Dillsburg, PA 17019
717-432-8449

Fri-Sat: Open air vendors, refreshments, weed walk, lavender distilling, herbal salve workshop, garden club, herbal hand-outs, herb gardens, 18th century fiber artist, aviary, miniature horses, apiary, herb and flower sale, and more. Alpaca shearing on Saturday!

M

Friday: 10 a.m.-6 p.m.
Saturday: 10 a.m.-6 p.m.

About the Tour:

- Tour Length: All day event
- Guided Tour: Speakers and demonstrations throughout, stroll at your own pace.
- Admission Charge: \$5/person, under 12 are free
- Conditions/Restrictions: No pets, no smoking
- Motorcoaches: Yes, please call to make reservations and for approx. schedule.

6 NEW! Electronic Manufacturing Services Group
951 Monocacy Rd, York, PA 17404
717-764-0002

www.emsginc.com
EMSG assembles circuit boards for a large and diverse clientele. Visitors will be able to see the start to finish assembly of products such as LED lights, video distribution systems, even model trains. Visitors can expect to see the largest high speed assembly lines in York County and get an inside peak into an industry generally thought only to be overseas.

M

Wednesday: 9 a.m.-3 p.m.
Thursday: 9 a.m.-3 p.m.
Friday: 9 a.m.-3 p.m.

About the Tour:

- Tour Length: 30-45 minutes
- Guided Tour: Yes
- Cameras Permitted: No
- Conditions/Restrictions: Visitors must wear an anti-static jacket (provided) and fully enclosed low-heeled shoes required.
- Motorcoaches: Yes; one bus at a time



7 George's Furniture, Inc.
9 Reichs Church Rd, Marietta, PA 17547
800-799-1685

www.georgesfurniturepa.com
At George's you'll be transported to a different world where furniture is made by craftsmen who take pride in their work. Each piece created is one-of-a kind. Enjoy watching handmade furniture being built, and imagine the possibilities while walking through our galleries.

M

Wednesday: 8 a.m.-4 p.m.
Thursday: 8 a.m.-4 p.m.
Friday: 8 a.m.-2 p.m.

About the Tour:

- Tour Length: 30-40 minutes
- Guided Tour: Yes
- Retail/Factory Store on-site: Yes
- Admission Charge: \$3/person
- Conditions/Restrictions: Bathroom is not handicap-accessible
- Motorcoaches: Yes, call ahead for available times

8 Harley-Davidson Motor Company, Vehicle Operations
1425 Eden Rd, York, PA 17402
877-883-1450

www.harley-davidson.com/factorytours
Journey through the facility that produces the Touring, CVO™, and Trike models. Both classic and Steel Toe Tours are available. Please reserve Classic Tours for groups of 10 or more and all Steel Toe Tours in advance.

M

Wednesday: Tour Center Opens 8 a.m. -4 p.m.
Tours: 9 a.m.-2 p.m.

Thursday: Tour Center Opens 8 a.m. -4 p.m.
Tours: 9 a.m.-2 p.m.

Friday: Tour Center Opens 8 a.m. -4 p.m.
Tours: 9 a.m.-2 p.m.

About the Tour:

- Tour Length: Classic Tour: 1 hour; Steel Toe Tour: 2 hours
- Guided Tour: Classic Tour: Yes; Steel Toe Tour: Yes
- Cameras Permitted: In Tour Center ONLY, not in factory
- Minimum Age Requirement: 12
- Admission Charge: Classic Tour: Free for 9 or less, fee for 10 or more - call ahead for rates; Steel Toe Tour: \$35-\$38
- Conditions/Restrictions: Fully enclosed low-heeled shoes required.
- Motorcoaches: Yes, call for availability

Legend:

- | | |
|---------------------------------|---------------------------------|
| Must be 21 or older for alcohol | No public restrooms |
| Cameras NOT permitted | Factory store/gift shop on site |
| Admission charge | Closed-toe shoes required |
| Not handicapped accessible | Motorcoaches welcome* |

*Symbol numbers are keyed to the map on page 3.
Motorcoaches: Advance Reservations Required.

9 NEW! Herb & Herd

Central Market House
34 W Philadelphia St, York, PA 17401
www.herbandherd.com



A stand run by Tuttoni's Restaurant that sells items they offer on their farm to table menu. We sell fresh cheeses, charcuterie, sauces and fresh made pasta. Come see pasta be made start to finish. You will see the pasta be hand cut and extruded. Located in York's Central Market.

Thursday: 10 a.m.-2 p.m.
Saturday: 10 a.m.-2 p.m.

About the Tour:

- Tour Length: 20 minutes
- Guided Tour: Yes
- Motorcoaches: Yes; email ahead to let our chef know how many to expect.

10 NEW! Legacy Athletic

300 Fame Ave, Hanover, PA 17331
800-627-3244
www.legacy92.com

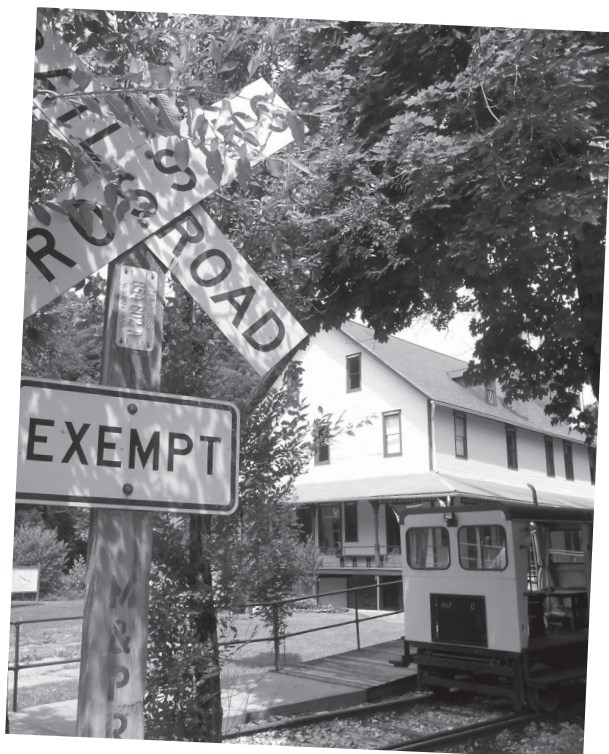


Founded in 1992, Legacy offers a complete retro-inspired brand of apparel, headwear, and home décor for the collegiate, corporate, resort, and destination markets. Visitors will have an opportunity to view a brief video describing Legacy's history and tour our sales showroom, as well as our Embroidery, Apparel, and Home Décor departments.

Wednesday: 10 a.m.-2 p.m.

About the Tour:

- Tour Length: One hour
- Guided Tour: Yes
- Minimum Age Requirement: Yes; age 13 and older
- Conditions/Restrictions: Tours will start every 30 minutes on the half hour. No cameras or videotaping.
- Motorcoaches: No

**11 Ma & Pa Railroad Heritage Village**

1258 Muddy Creek Forks Rd, Airville, PA 17302
717-927-9565
www.MaAndPaRailroad.com



Journey in time to 1915 when Muddy Creek Forks was a thriving community centered on the Maryland & Pennsylvania Railroad. Take a 40 minute motorcar train ride through the scenic Muddy Creek Valley. Visit with costumed docents in the A.M. Grove store, railroad station, Post Office, Muddy Creek Forks Roller Mills, and grain elevator. The Village of Muddy Creek Forks is a Historic District on the National Register of Historic Places, and the Ma & Pa was among the most famous shortline railroads in the U.S.

Friday: 11 a.m.-5 p.m.
Saturday: 11 a.m.-5 p.m.

About the Tour:

- Tour Length: Allow 1 ½ hour minimum
- Guided Tour: No (Visitors interact with costumed docents)
- Public Restrooms: Handicap accessible portable toilet
- Handicap Accessible: First floor of General Store only; Mill and train with assistance.
- Minimum Age Requirement: No. Children must be accompanied by an adult.
- Admission Charge: \$7 Adults, \$5 Children (includes the train ride)
- Conditions/Restrictions: Train ride through the Muddy Creek Valley lasts approximately 45 minutes and runs hourly at quarter after the hour.
- Motorcoaches: Yes, advanced reservations required. Maximum 80 visitors in a single group. Friday or Saturday arriving 11 a.m.-3 p.m. Allow 2 hour minimum.

12 Martin's Snacks

5847 Lincoln Highway West, Thomasville, PA 17364
717-792-3565



www.martinssnacks.com
Martin's is known for hand cook'd "Kettle Cook'd" potato chips, Bar-B-Que waffle chips and fresh buttered popcorn. A family owned business in operation for over 70 years. Come enjoy a close-up look at our Factory.

Wednesday: 9 a.m.-2 p.m.

About the Tour:

- Tour Length: 35-40 minutes
- Guided Tour: No
- Conditions/Restrictions: Closed-toe shoes required; no flip-flops, no sandals.
- Motorcoaches: Yes; Wednesday June 13 at 9 a.m., 10 a.m., 11 a.m., Noon and 1 p.m.

13 Microtrac Inc.

3230 Susquehanna Trail, York, PA 17406
888-643-5880
www.microtrac.com



Microtrac strives to provide companies who want to know more about their materials with innovative, reliable, and repeatable particle analysis instrumentation. Come see how our latest product development synchronizes size and shape particle analysis using a revolutionary new patented technology.

Friday: 10 a.m.-2 p.m.

About the Tour:

- Tour Length: 20 minutes
- Guided Tour: Yes
- Motorcoaches: Yes

**14 National Watch & Clock Museum**

514 Poplar St, Columbia, PA 17512
717-684-8261



www.museumoftime.org
Take a trip back in time at the National Watch & Clock Museum. Thousands of historic and modern timepieces await your discovery. See the Monumental Engle Clock in operation!



Wednesday: 10 a.m. to 5 p.m.
Thursday: 10 a.m. to 5 p.m.
Friday: 10 a.m. to 5 p.m.
Saturday: 10 a.m. to 5 p.m.

About the Tour:

- Tour Length: 1-1 ½ hours
- Guided Tour: No
- Admission: Yes, \$9 Adult, \$8 Seniors, \$5 Children
- Motorcoaches: Yes, flexible scheduling

15 NEW! Nissley Vineyards

140 Vintage Drive, Bainbridge, PA 17502
717-426-3514
www.nissleywine.com



Nissley Vineyards is one of Pennsylvania's oldest and largest operating wineries, offering tours partly outside among the vines and also inside where you'll see where grapes are pressed and how wine is bottled. Wine tastings follow in the shop.

Wednesday: 10 a.m.-4:45 p.m.
Thursday: 10 a.m.-4:45 p.m.
Friday: 10 a.m.-4:45 p.m.
Saturday: 10 a.m.-4:45 p.m.

About the Tour:

- Tour Length: 20-30 minutes
- Guided Tour: No
- Handicap-Accessible: No
- Minimum Age Requirement: Yes; must be 21+
- Conditions/Restrictions: Tours are self-guided, starting upon the visitor's arrival. Optional wine tastings are \$5/person.
- Motorcoaches: No

16 **NEW! Paulus Orchards**
522 E Mount Airy Rd, Dillsburg, PA 17019
717-432-2544

www.paulusorchards.com

Learn about honey bees, observe a bee hive, and take a wagon ride through the orchard to see how fruits are grown. Optional add-on for \$5/person: pick a few strawberries and make your own fresh strawberry milkshake! Stay and pick-your-own strawberries, enjoy lunch at our farm fresh café, and shop in our farm store. (Additional cost for these activities).

Wednesday: 11 a.m.-3 p.m.

Thursday: 11 a.m.-3 p.m.

Friday: 11 a.m.-3 p.m.

Saturday: 11 a.m.-3 p.m.

About the Tour:

- Tour Length: 45 minutes
- Guided Tour: Yes
- Handicap-Accessible: Yes, but wagon ride has two steps. Assistance available.
- Admission Charge: Tour is free with optional add-on: \$5/person to pick your own strawberries and make your own strawberry milkshake.
- Conditions/Restrictions: This is a working farm, please wear comfortable walking shoes. Tours will start every 30 minutes as groups are interested.
- Motorcoaches: Yes; with at least one week advance registration. Available Wed-Sat at 3 p.m.

17 **Perrydell Farm Dairy, Inc.**
90 Indian Rock Dam Rd, York, PA 17403
717-741-3485

www.perrydellfarm.com

See milking and bottling facilities, pet calves, shop at our on-site farm store and enjoy our famous chocolate milk and ice cream that are made right here from milk and cream that came from the cows you just said hello to!

Wednesday: 9 a.m.-6 p.m.

Thursday: 9 a.m.-6 p.m.

Friday: 9 a.m.-6 p.m.

Saturday: 9 a.m.-6 p.m.

About the Tour:

- Tour Length: 30-45 minutes
- Guided Tour: No
- Public Restrooms: portable
- Conditions/Restrictions: Everyone must use hand sanitizer after touching animals and/or fencing. This is a working farm; parents must supervise children at all times.
- Motorcoaches: No

18 **Revonah Pretzel LLC**
507 Baltimore St, Rear, Hanover, PA 17331
www.revonahpretzel.com

Tour the bakery and learn about the production of handmade pretzels at this 80 year old business. Samples will be available on the tour.

Wednesday: 9-11:30 a.m.

Thursday: 9-11:30 a.m.

Friday: 9-11:30 a.m.

About the Tour:

- Tour Length: 30 Minutes
- Guided Tour: Yes
- Conditions/Restrictions: Reservations required.
- Motorcoaches: Yes, with advance notice. Day and timeslots available: Tuesday-Thursday 9-11:30 a.m.

19 **Snyder's of Hanover Factory Store**
1350 York St, Hanover, PA 17331
1-800-233-7125 Ext 28592

www.snydersofhanover.com/our-story/bakery-tour

Our guided walking tour gives you views of our warehouses, packaging, oven, and specialty foods rooms. Our tour is open to pretzel lovers of all ages! Stop in our Factory Store at the end to fill up on must have products!

Wednesday: 9:30 a.m.-2 p.m.

Thursday: 9:30 a.m.-2 p.m.

Friday: 9:30 a.m.-2 p.m.

About the Tour:

- Tour Length: 30 minutes
- Guided Tour: Yes
- Handicap Accessible: No
- Conditions/Restrictions: Must be able to climb 20 steps
- Motorcoaches: Yes; deposit and two week notice required. Wednesday-Friday, 9:30 a.m.-2 p.m.

20 **Sonnewald Natural Foods**
4796 Lehman Rd, Spring Grove, PA 17362
717-225-3825

www.sonnewald.org

This chemical-free farm is home to PA's first solar residence. Hear the history, see the bio-intensive research garden, taste the seasonal fruits. Visit one of the state's oldest natural food stores, featuring climate-controlled, self-serve bulk foods, freshly ground flour and organic products.

Wednesday: 10:30 a.m. & 4 p.m.

Thursday: 10:30 a.m. & 4 p.m.

Friday: 10:30 a.m. & 4 p.m.

Saturday: 10:30 a.m. & 3 p.m.

About the Tour:

- Tour Length: 1-1/2 hours
- Guided Tour: Yes
- Handicap Accessible: No
- Motorcoaches: Yes



21 **Steam Into History**
2 W Main St, New Freedom, PA 17349
717-942-2370

www.SteamIntoHistory.com

Ride the rails that President Lincoln rode on his way to deliver the Gettysburg Address and the trail voted number one in Pennsylvania. Steam Into History boasts an 1860s period steam locomotive with period cars and a mid-1950s Pennsylvania Diesel.

Saturday: 10 a.m.-4 p.m.

About the Tour:

- Tour Length: 5 minutes
- Guided Tour: Yes
- Handicap Accessible: No
- Motorcoaches: Yes; no restrictions

22 **Stewartstown Railroad Company**
21 W Pennsylvania Ave, Stewartstown, PA 17363
717-746-4998

www.StewartstownRailroadCompany.com

Stewartstown Railroad has been in business since 1885, providing passenger and freight service to Southern York County with all original equipment and trackage. Participants can see the 1914 Station Building and ride the excursion train in a vintage 1920 passenger coach or an authentic railroad caboose.

Friday: 10 a.m.-4 p.m.

Saturday: 10 a.m.-4 p.m.

About the Tour:

- Tour Length: ½ to 1 hour (longer if train is ridden)
- Guided Tour: Yes
- Handicap Accessible: No
- Admission Charge: Yes, if riding train it is \$12 for adults, \$11 for seniors and \$10 for children (ages 2-12).
- Conditions/Restrictions: Train rides available Saturday only at 1:30, 2:30, and 3:30 p.m.
- Motorcoaches: Yes; Friday, June 15, 10 a.m.-4 p.m., maximum two buses at once.

Legend:

- 21** Must be 21 or older for alcohol
- 🚫** Cameras NOT permitted
- 💰** Admission charge
- ♿** Not handicapped accessible
- 🚻** No public restrooms
- 🛍️** Factory store/gift shop on site
- 👞** Closed-toe shoes required
- M** Motorcoaches welcome*

Symbol numbers are keyed to the map on page 3.
*Motorcoaches: Advance Reservations Required.

23 **NEW! Strasburg Rail Road**
301 Gap Road, Ronks, PA 17572
717-687-8421



www.strasburgrailroad.com

Enjoy a behind-the-scenes guided tour of the Strasburg Rail Road's mechanical shop where the trains are built and refurbished. Known around the globe for its dedication to the steam locomotive, the Strasburg Rail Road has been operating, maintaining, and restoring historic railroad equipment for nearly sixty years.



Wednesday: Noon-1 p.m.

Thursday: Noon-1 p.m.

Friday: Noon-1 p.m.

Saturday: 9-10 a.m.

About the Tour:

- Tour Length: approx. 1 hour
- Guided Tour: Yes
- Handicap-Accessible: No
- Minimum Age Requirement: Yes; 5 years or older
- Admission Charge: \$19/person
- Conditions/Restrictions: Children ages 5-17 must be accompanied by an adult. Closed toe shoes are required.
- Motorcoaches: Yes, must call in advance for reservations

24 **Sunrise Soap Company**
29 N Beaver St, York, PA 17401
717-843-SOAP (7627)



www.sunrisesoapco.com

Visitors will experience the creation of fresh, natural homemade products made daily in our visitor-friendly kitchen. Make your own items throughout the event and experience soap making tours Wednesday through Friday starting at 11 a.m. and 2 p.m. Made In America - By You!



Wednesday: 9 a.m.-6 p.m.

Thursday: 9 a.m.-6 p.m.

Friday: 9 a.m.-7 p.m.

Saturday: 9 a.m.-6 p.m.

About the Tour:

- Tour Length: 20 minutes
- Guided Tour: Yes
- Public restrooms: No
- Handicap Accessible: No
- Motorcoaches: Yes, extremely flexible, available any day including evenings after 5 p.m.



25 **Teaching Museum for the Fiber Arts & Textiles**
12637 Mt. Olivet Rd, Felton, PA 17322
717-873-8960



www.teachingmuseum.org

The Teaching Museum starts with sheep and alpaca shearing on Friday starting at 10 a.m. until finished. Enjoy learning how it was done in the 18th and 19th centuries by touring through our museum and demonstrations for fiber arts and textiles. Visit our fiber animals and gift shop.



Friday: 10 a.m.-2 p.m.

Saturday: 10 a.m.-2 p.m.

About the Tour:

- Tour Length: 1-2 hours
- Guided Tour: No
- Handicap Accessible: No
- Age Requirement: Children under 10 must be accompanied by an adult
- Admission Charge: Free, donations appreciated
- Motorcoaches: No

26 **NEW! Thunder Ridge Vineyards**
932 Hill Top Dr S, Spring Grove, PA 17362
717-465-1283



www.thunderridgevineyard.wixsite.com/trvineyards

Thunder Ridge Vineyards is a boutique style Estate Winery located on a 6-acre farm in South Central Pennsylvania. With 42 varieties of grapes, the Vineyard produces some very unique craft wines. Tour the Vineyard and taste some craft wines.



Thursday: 11 a.m.-5 p.m.

Friday: 11 a.m.-5 p.m.

Saturday: 11 a.m.-5 p.m.

About the Tour:

- Tour Length: 30 minutes
- Guided Tour: Yes
- Admission Charge: Yes, \$5/person
- Conditions/Restrictions: Must be 21 or older to taste wine
- Motorcoaches: No

27 **Turkey Hill Experience**
301 Linden St, Columbia, PA 17512
844-487-4884



www.turkeyhillexperience.com

Interactive ice cream fun for all ages! Learn how ice cream is made, sit on our milk truck, create your own virtual flavor and packaging, milk mechanical cows and learn Turkey Hill's history. Bring your flavor to life in the Taste Lab. Unlimited samples!



Wednesday: 10 a.m.-4 p.m.

Thursday: 10 a.m.-4 p.m.

Friday: 10 a.m.-4 p.m.

Saturday: 10 a.m.-4 p.m.

About the Tour:

- Tour Length: 60-90 minutes
- Guided Tour: No
- Admission Charge: \$7/person
- Conditions/Restrictions: Taste Lab can be added at a nominal fee, subject to availability
- Motorcoaches: Yes

28 **Utz Quality Foods, LLC**
900 High St, Hanover, PA 17331
717-637-6644



www.Utzsnacks.com

Take the UTZ "Chip Trip" where you can see and smell the making of the famous Utz Potato Chips. From an enclosed catwalk above, you can look down on the entire process from start to finish. This self-guided tour, with the help of closed-circuit TV monitors, a push-to-talk audio program and a history theater, allows the guest to learn about our company and its products. The Chip Trip is fun for the whole family and a learning experience for the young and old. Our nearby Outlet Store is stocked fresh daily so you can taste why the Utz family of products is the best in America.



Wednesday: 8 a.m.-4 p.m.

Thursday: 8 a.m.-4 p.m.

About the Tour:

- Tour Length: 60 minutes
- Guided Tour: No
- Handicap Accessible: Yes, please call ahead
- Cameras Permitted: No
- Retail/Factory Store on-site: No, half mile away
- Motorcoaches: Yes, please call ahead



29 Walk-Le Farm

6898 Oak Ln
 Thomasville, PA 17364
 717-698-5199

www.facebook.com/walkleholsteins

Come at 8 a.m. or 5 p.m. to help feed the calves. All tours include the cow kitchen, birthing center, housing, and where they go to work: our newly renovated milking parlor! This is an educational walking tour.

Wednesday: 8 a.m., 10 a.m., 1 p.m., 3 p.m. and 5 p.m.

Thursday: 8 a.m., 10 a.m., 1 p.m., 3 p.m. and 5 p.m.

Friday: 8 a.m., 10 a.m., 1 p.m., 3 p.m. and 5 p.m.

About the Tour:

- Tour Length: 60-90 minutes
- Guided Tour: Yes
- Public restrooms: Port-a-Potty on site
- Handicap Accessible: No
- Admission Charge: \$5 per person
- Conditions/Restrictions: This is an operating dairy farm walking tour. Dress accordingly.
- Motorcoaches: Yes, by appointment only.

30 Wallace-Cross Mill

15759 Cross Mill Rd
 Felton, PA 17322
 717-840-7440

www.yorkcountyparks.org

Meet on the first floor of the refurbished 1826 Mill. Docents will give an intro to milling, explain the role of the miller, and then operate the mill, waterwheel, gears and shafts visible. Then participants can tour the 2nd and 3rd floor displays at their pace and ask questions.

Friday: 11 a.m.-3 p.m.

Saturday: 11 a.m.-3 p.m.

About the Tour:

- Tour Length: 30 minutes
- Guided Tour: Yes
- Admission Charge: None; donations are accepted.
- Motorcoaches: Yes, tight turn into the small parking lot and across a bridge but it can be done.

31 Weldon Solutions

425 East Berlin Rd
 York, PA 17408
 717-846-4000

www.weldonsolutions.com

Weldon Solutions manufactures and markets CNC Cylindrical grinding machines, and is an integrator of industrial robotic automation. Visitors will be given a tour of the facilities with a focus on our machine tool and automation systems assembly areas. They will also stop at our demo area to see industrial robots and Weldon grinders in action.

Friday: 9 a.m.-4 p.m.

About the Tour:

- Tour Length: 45 minutes
- Guided Tour: Yes
- Motorcoaches: Yes

32 York County History Center Agricultural & Industrial Museum

217 W Princess St, York, PA 17401
 717-848-1587

www.yorkhistorycenter.org

The Agricultural & Industrial Museum highlights York County's innovative spirit through showcasing nearly two centuries of industrial development. Display features industrial machines, automobiles, and farming equipment. Key exhibits include an operational 1903 Ammonia Compressor and an operating water wheel inside the museum.

Wednesday: 10 a.m.-4 p.m.

Thursday: 10 a.m.-4 p.m.

Friday: 10 a.m.-4 p.m.

Saturday: 10 a.m.-4 p.m.

About the Tour:

- Tour Length: 1 hour
- Guided Tour: No
- Admission: \$2/person
- Motorcoaches: Yes, scheduled in advance, guided and non-guided options; Wednesday-Saturday 10 a.m.-3 p.m. (last tour of the day starts at 3 p.m.)

33 York County Solid Waste Authority/York County Resource Recovery Center

2651 Blackbridge Rd, York, PA 17406

Tours start at the Education center off of Blackgum Ct.

Directions to the Education Center are provided upon registration.

717-845-1066

www.ycswa.com

The York County Resource Recovery Center is a waste-to-energy facility that uses garbage as fuel to power a steam turbine to produce electricity. Visitors are given an overview of the process of waste-to-energy followed by a walking tour which includes the Tipping Floor, Turbine-Generator Room, and Control Room.

Thursday: 10-11:30 a.m.; 2-3:30 p.m.

About the Tour:

- Tour Length: 90 minutes
- Guided Tour: Yes
- Minimum Age Requirement: Must be 6 years or older
- Conditions/Restrictions: Tour participants must register by Friday, June 8 - maximum 60 participants per tour; participants must disclose if they have a pacemaker so they can be safely diverted from part of the tour; flat, closed toe shoes required; casual attire is suggested.
- Motorcoaches: Yes, advance registration required and only 60 participants can be accommodated per tour.

**34 York Time Institute**

312 W Market St, York, PA 17401
 717-848-3152

www.yorktimeinstitute.com

Observe Master Watchmakers and students restore all types of timepieces from treasured family heirlooms to modern varieties using tools and machines dating from the 1700s to the present.

Wednesday: 9 a.m.-3 p.m.

Thursday: 9 a.m.-3 p.m.

Friday: 9 a.m.-3 p.m.

Saturday: 9 a.m.-3 p.m.

About the Tour:

- Tour Length: 30 minutes
- Guided Tour: Yes
- Handicap Accessible: No
- Conditions/Restrictions: No smoking, vaping, smokeless tobacco, food, or drinks permitted. Participants MUST call for tour appointment.
- Motorcoaches: Yes, we can take groups of no more than ten at a time. Motorcoaches can park at York Emporium and guests can peruse the Emporium and come to The Time Institute in shifts. Call for more information.

35 NEW! Zimmerman Center for Heritage

1706 Long Level Rd, Wrightsville, PA 17368
 717-252-0229 ext 7

www.susquehannaheritage.org

Tour an 18th century mansion on the banks of the Susquehanna River, be inspired by our Susquehanna River art collection, learn about the Susquehannock Indians, and get your passport stamped at this National Park Service site.

Wednesday: 10 a.m.-4 p.m.

Thursday: 10 a.m.-4 p.m.

Friday: 10 a.m.-4 p.m.

Saturday: 10 a.m.-4 p.m.

About the Tour:

- Tour Length: 45 minutes
- Guided Tour: Yes
- Handicap-Accessible: Partially
- Motorcoaches: Yes, 25 passenger maximum

Legend:

21 Must be 21 or older for alcohol



Cameras NOT permitted



Admission charge



Not handicapped accessible



No public restrooms



Factory store/ gift shop on site



Closed-toe shoes required



Motorcoaches welcome*

Symbol numbers are keyed to the map on page 3.
 *Motorcoaches: Advance Reservations Required.

MADE IN AMERICA Tours event

20th Anniversary • June 13-16, 2018
www.yorkpa.org/events/made-in-america-event

Visit & Win!

Get your passport signed or stamped at each location you visit and enter to win great prizes when you visit five or more locations.

Adams County Winery	Martin's Snacks	Sunrise Soap Company
Alpacas of York	Microtrac Inc.	Teaching Museum for Fiber Arts and Textiles
Battlefield Brew Works & Spirits of Gettysburg Distillery	National Watch & Clock Museum	Thunder Ridge Vineyards
Bluett Bros. Violins	Nissley Vineyards	Turkey Hill Experience
Castle Creek Farm	Paulus Orchards	Utz Quality Foods, LLC
Electronic Manufacturing Services Group	Perrydell Farm Dairy, Inc.	Walk-Le Farm
George's Furniture Inc.	Revonah Pretzel LLC	Wallace-Cross Mill
Harley-Davidson Motor Company, Vehicle Operations	Snyder's of Hanover Factory Store	Weldon Solutions
Herb & Herd	Sonnwald Natural Foods	York County History Center Agricultural & Industrial Museum
Legacy Athletic	Steam Into History	York County Solid Waste Authority/ York County Resource Recovery Center
Ma & Pa Railroad Heritage Village	Stewartstown Railroad Company	York Time Institute
	Strasburg Rail Road	Zimmerman Center for Heritage

CUT HERE AND RETURN PASSPORT TO ENTER TO WIN!

Fill out the information below, including your email, and choose from two options.

- 1) Take a picture of your Passport and email marketing@yorkpa.org.
- 2) Leave your Passport at any Made in America location or mail to:
 York County Convention & Visitors Bureau
 60 E North St, York, PA 17401
 Attn: Marketing

Enjoy Exploring York. We appreciate your feedback and will email you a survey. Or go online to: www.surveymonkey.com/r/2018MadeInAmericaTours.

Name: _____

Address: _____

City: _____ State: _____ Zip: _____

Email: _____

Yes, sign me up to receive our Explore York Getaway Guide, an e-newsletter filled with events and packages in York County, PA.

Make Us the 1st Stop on Your River Adventure!



Connecting People to the River and its History

ZIMMERMAN CENTER FOR HERITAGE

1706 Long Level Road, Wrightsville, PA 17368 / 717.252.0229

SUSQUEHANNA HERITAGE

SusquehannaHeritage.org



SUSQUEHANNA RIVERLANDS
 PLAY. EXPLORE. EXPERIENCE.

SPECIAL OFFER for Made in America tour guests \$5 admission at the gate after 5pm w/5 passport stamps

PENN-MAR IRISH Festival AND CONCERT



#PennMarIrish

Saturday, June 16, 2018

10:30am-9pm
 on the grassy grounds of
 The Markets at Shrewsbury



IRISH MUSIC & DANCE
 IRISH VENDORS & FOOD
 CULTURAL WORKSHOPS
 FREE KIDS ACTIVITY TENT

PennMarIrishFestival.com