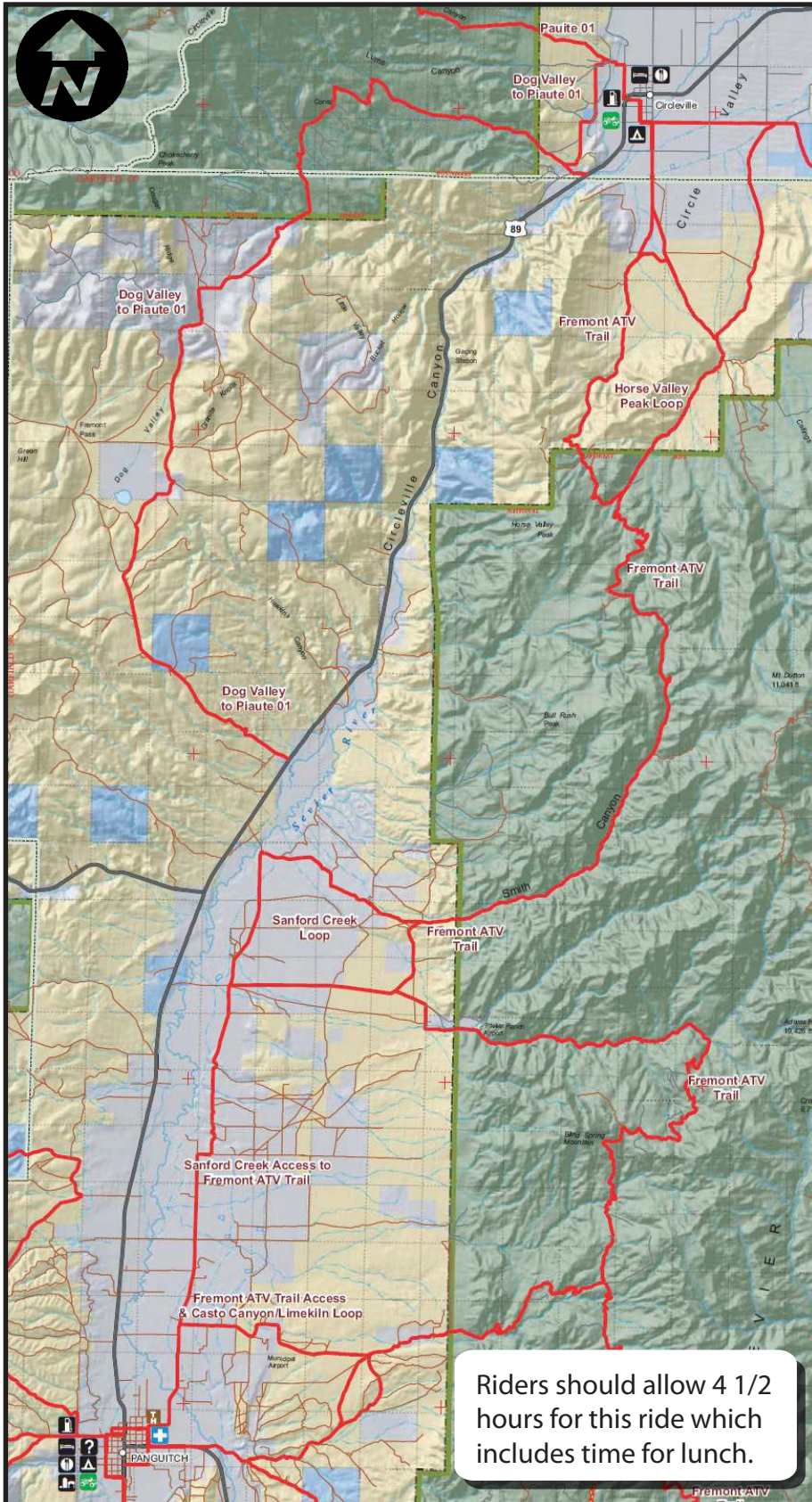


# Bull Rush Loop



Take a ride through thick forests, across sagebrush hills, the climb high around Bull Rush Peak.



## Skill Level - Advanced

Take this scenic ride from downtown Panguitch by riding north on the River Lane to Sanford Creek Road, then north through Smith Canyon and onto the Bull Rush Loop.



This ride is 36 miles long, is restricted to motorized vehicles 50" or less. There are side hill sections of the trail, very narrow passageways in the dry wash and a rocky and vertical descent into a canyon-like dry wash.

tread lightly!®

LEAVING A GOOD IMPRESSION



More information at [www.BryceCanyonCountry.com](http://www.BryceCanyonCountry.com) and [www.Utah-Trails.com](http://www.Utah-Trails.com)